



Update #25 Downtown Campus Reinvestment Project

City Council Workshop

September 10, 2024

Presenter: Kevin Phelps

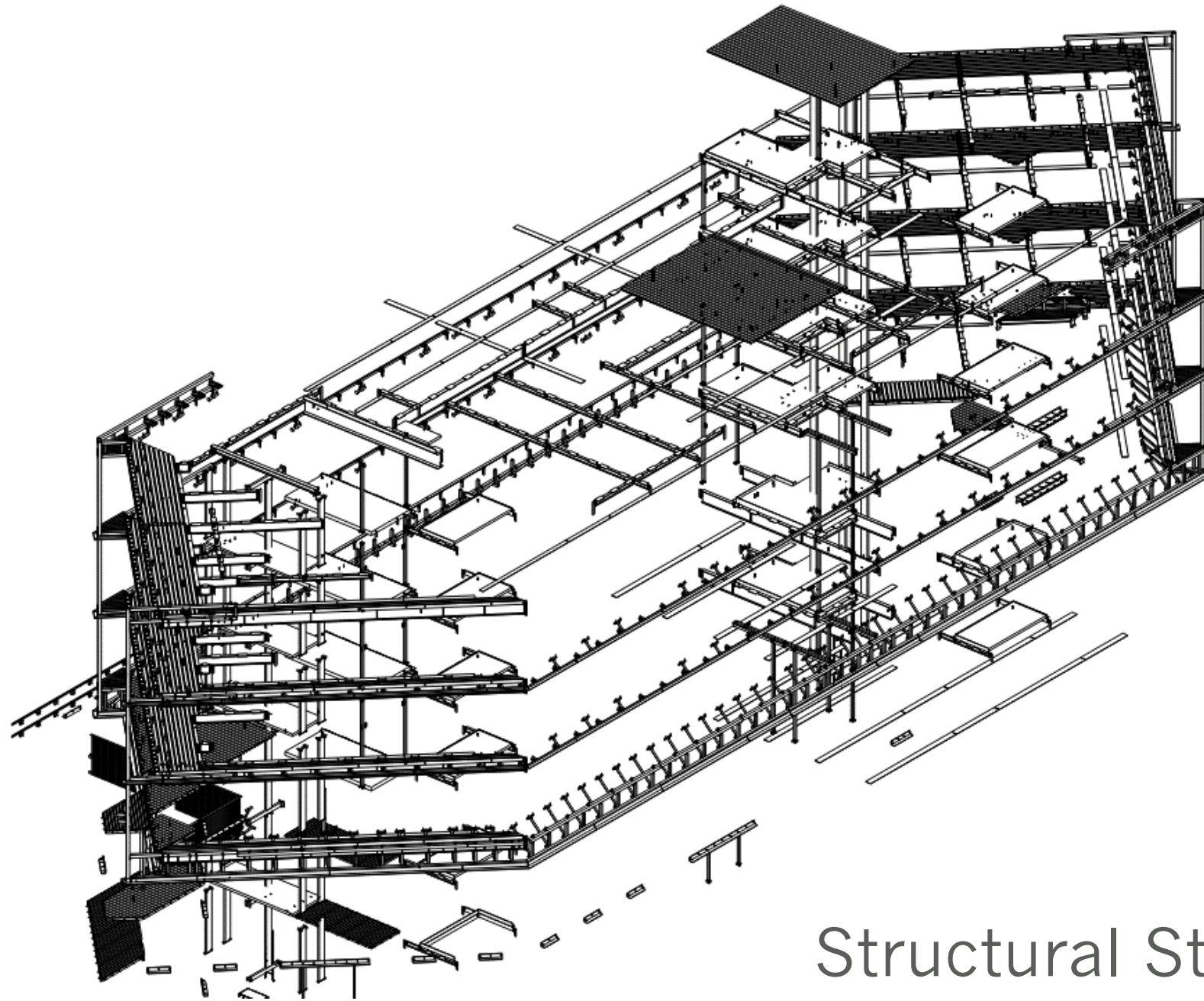


Site Activities



Wall Assembly Mock-up





Structural Steel Components

Flat Iron & Lintels



Slab Edge Steel Prep





Saw Cutting – Garden Level Windows





Saw Cutting – Elevators and Plumbing





Electrical Service Entrance





Electrical Service Entrance





In the Works

- Structural Steel September thru November
- Tentative Topping Out Gathering - November
- Velma Teague Study Council Workshop - October

