



**CROW 303 AZ (LUKE LOGISTICS)  
Annexation AN-261  
ADOPTION**

**City Council Public Hearing, October 22, 2024**





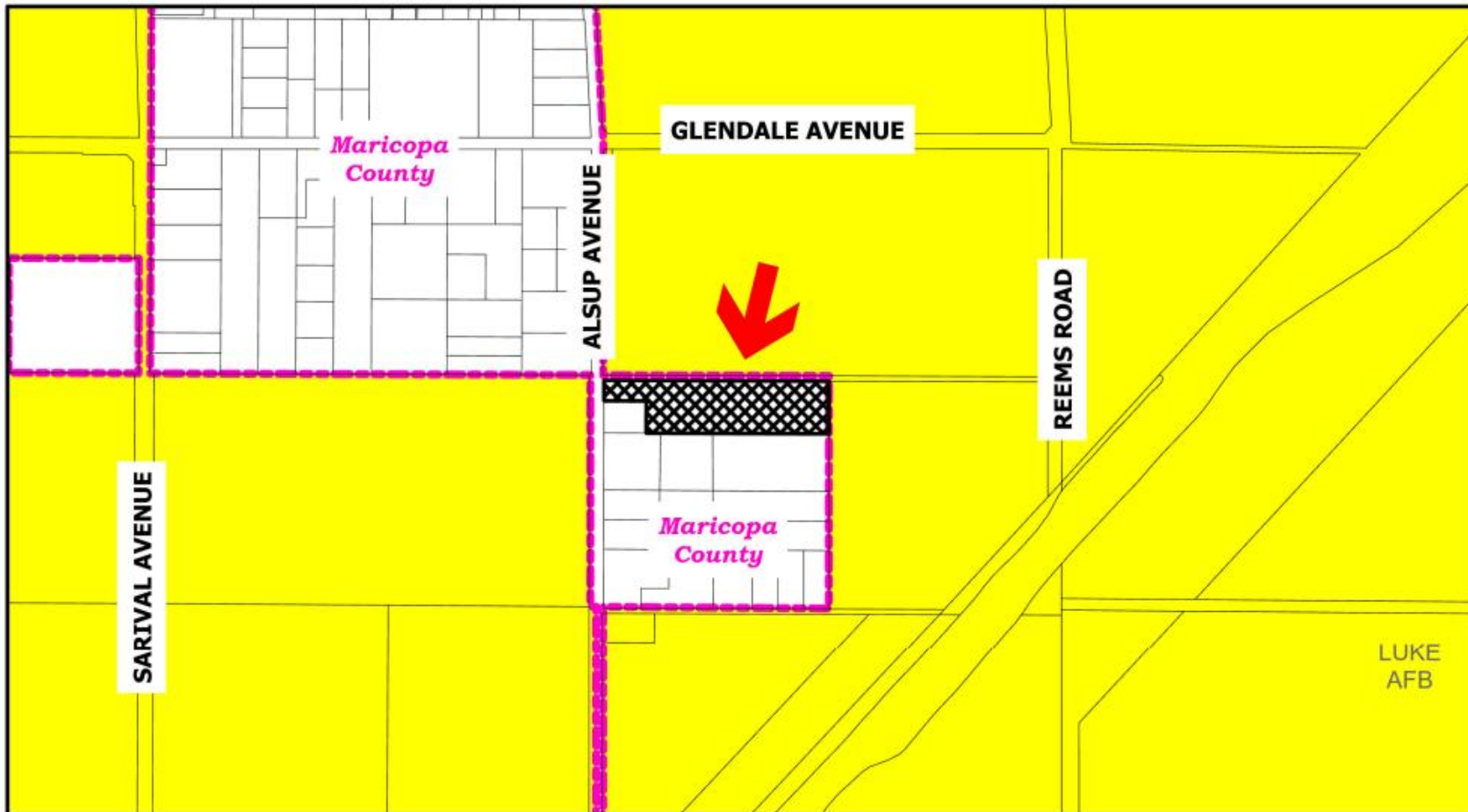
# Annexation Information

---

- 9-acre parcel located at the Southeast corner of West Ocotillo Road and North Alsup Avenue.
- County jurisdiction zoning: RU-43.
- Zoning upon initial annexation: RR-45.

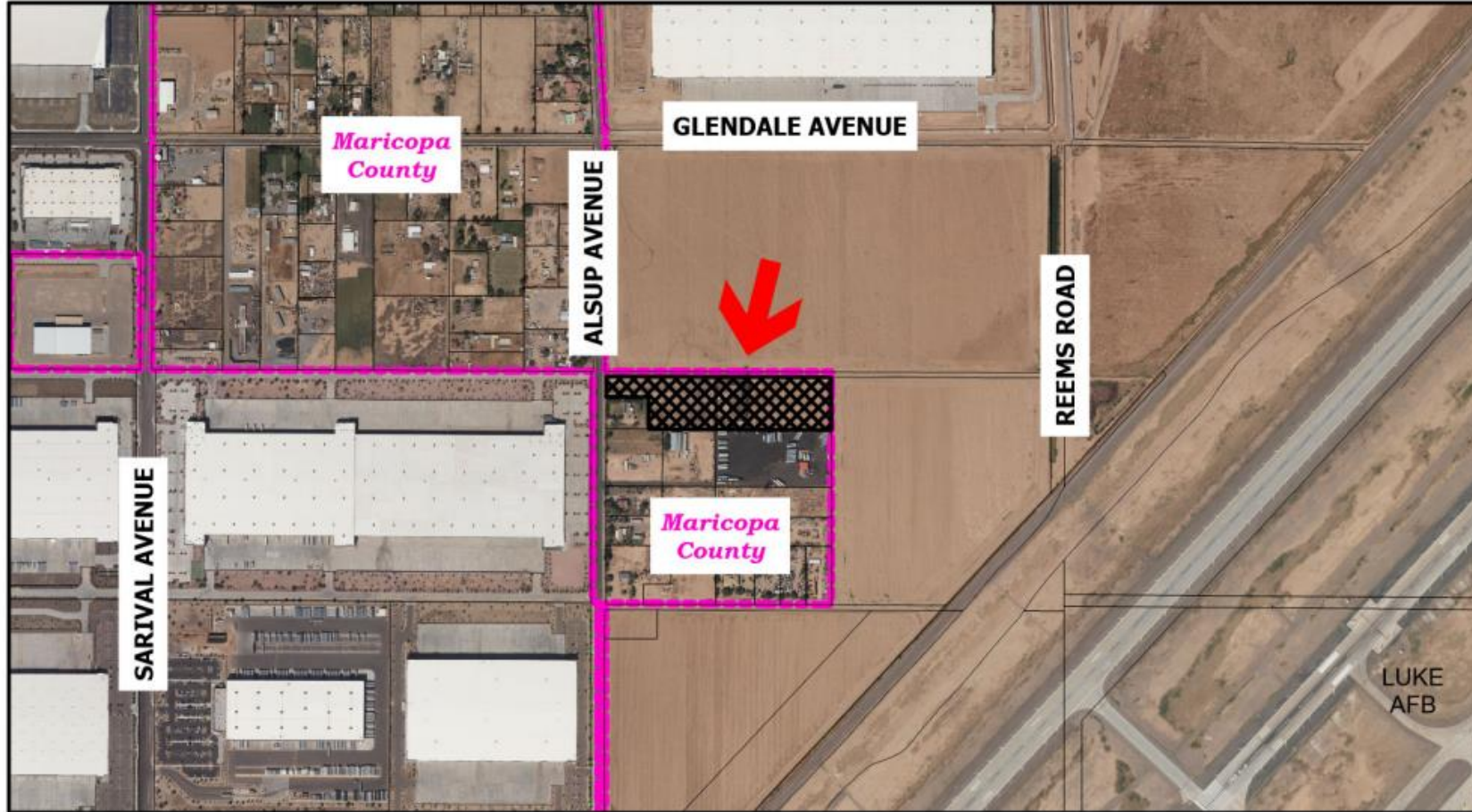


# Annexation Map





# Aerial Map





**CROW 303 AZ (LUKE LOGISTICS)  
Annexation AN-261  
ADOPTION**

**City Council Public Hearing, October 22, 2024**



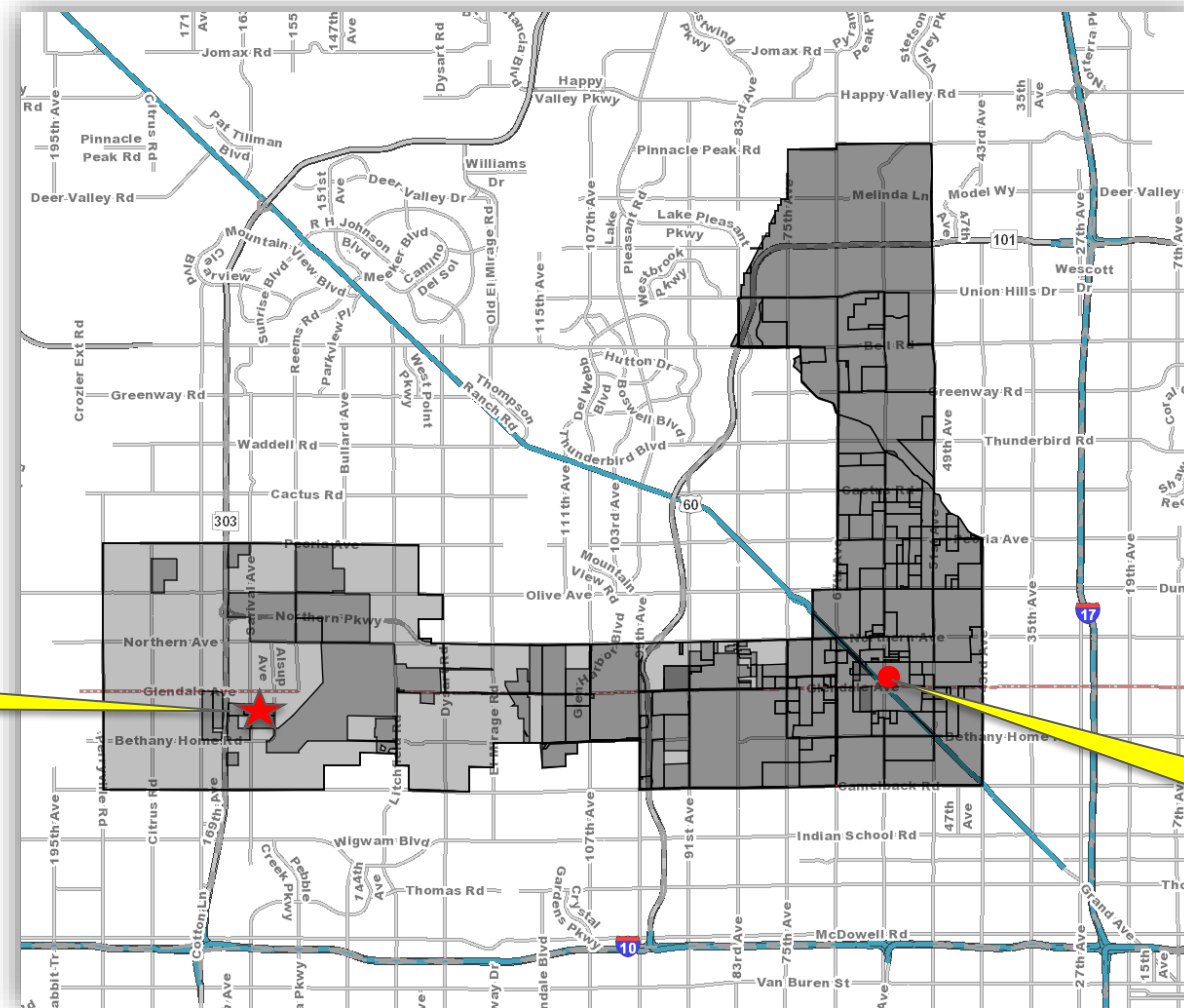




# Vicinity Map

SOUTHEAST  
CORNER OF  
WEST  
OCOTILLO  
ROAD AND  
NORTH ASLUP  
AVENUE

Annexation  
Site Location



CITY  
HALL