



Update #32 Downtown Campus Reinvestment Project

City Council Workshop

April 22, 2025

Presenter: Eddie Garcia



Site Activities



Site Activities

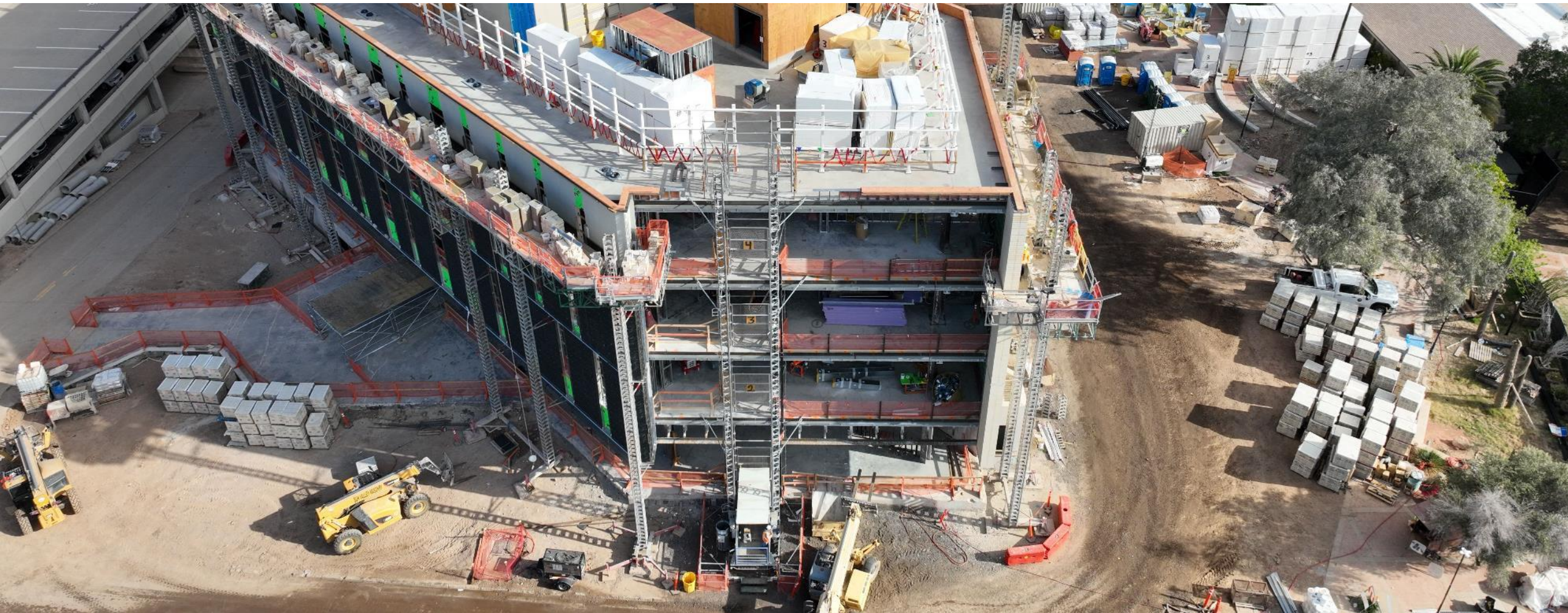




Site Activities



Site Activities



Site Activities



Site Activities



Site Activities





Site Activities

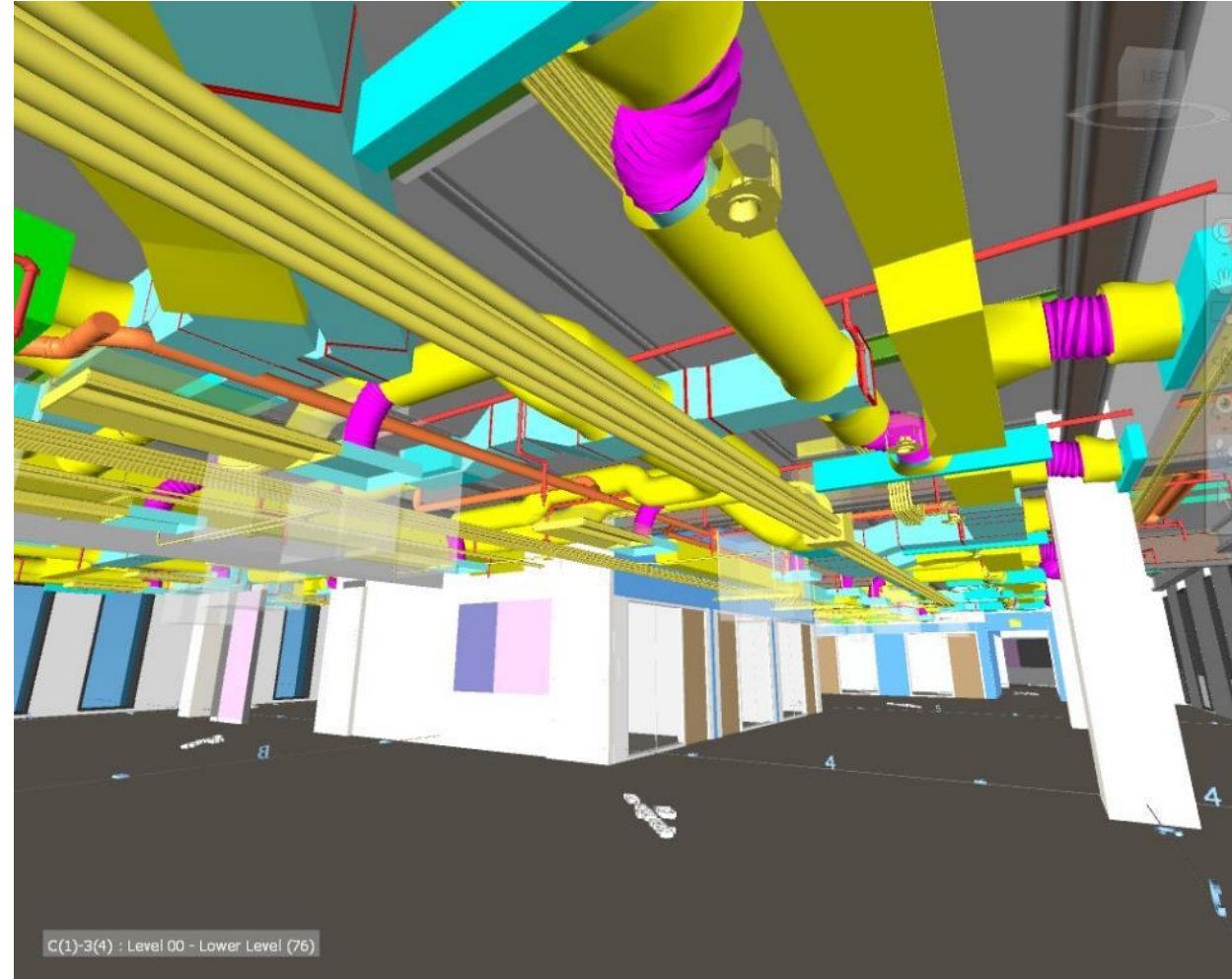
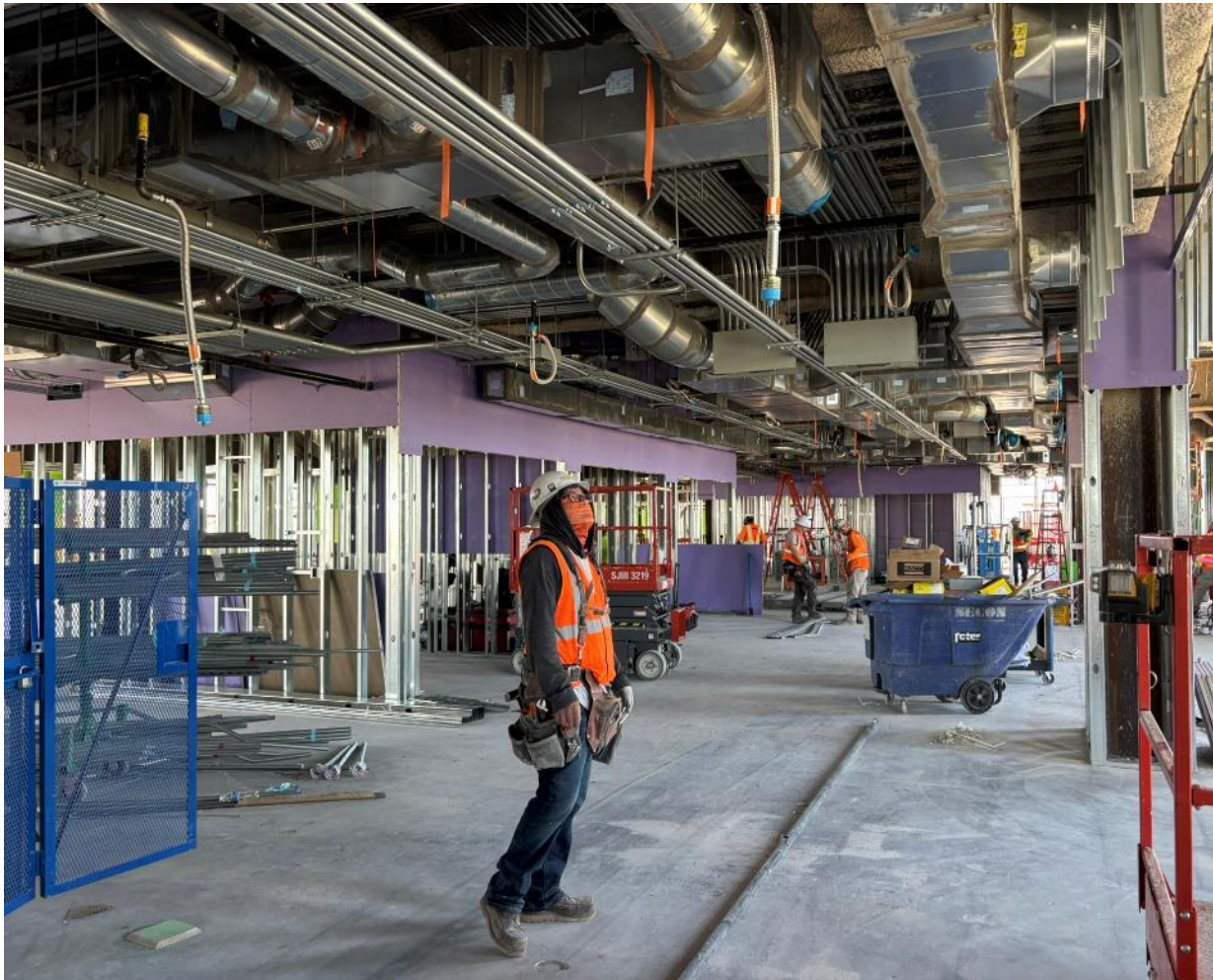


Site Activities





Interior Framing – Virtual and Real



Interior Framing

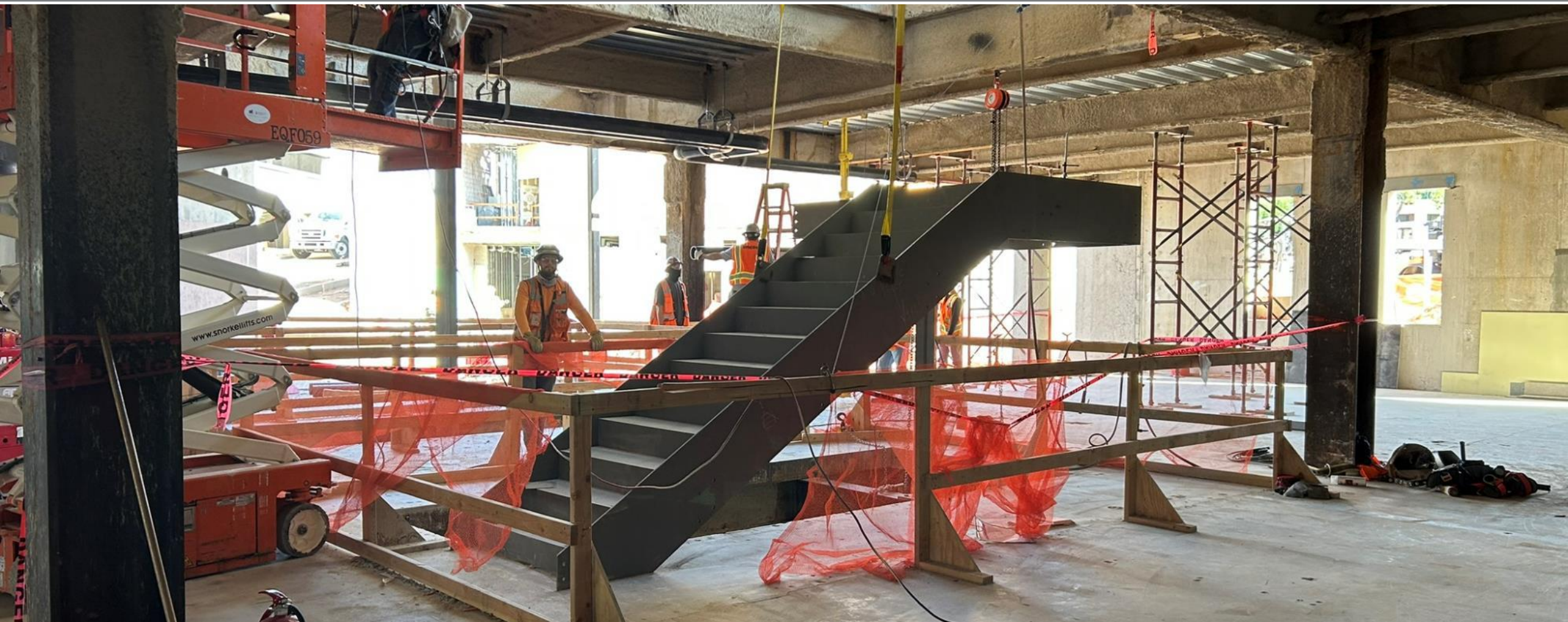


Engaged Leadership





North Stair



Electrical Rooms

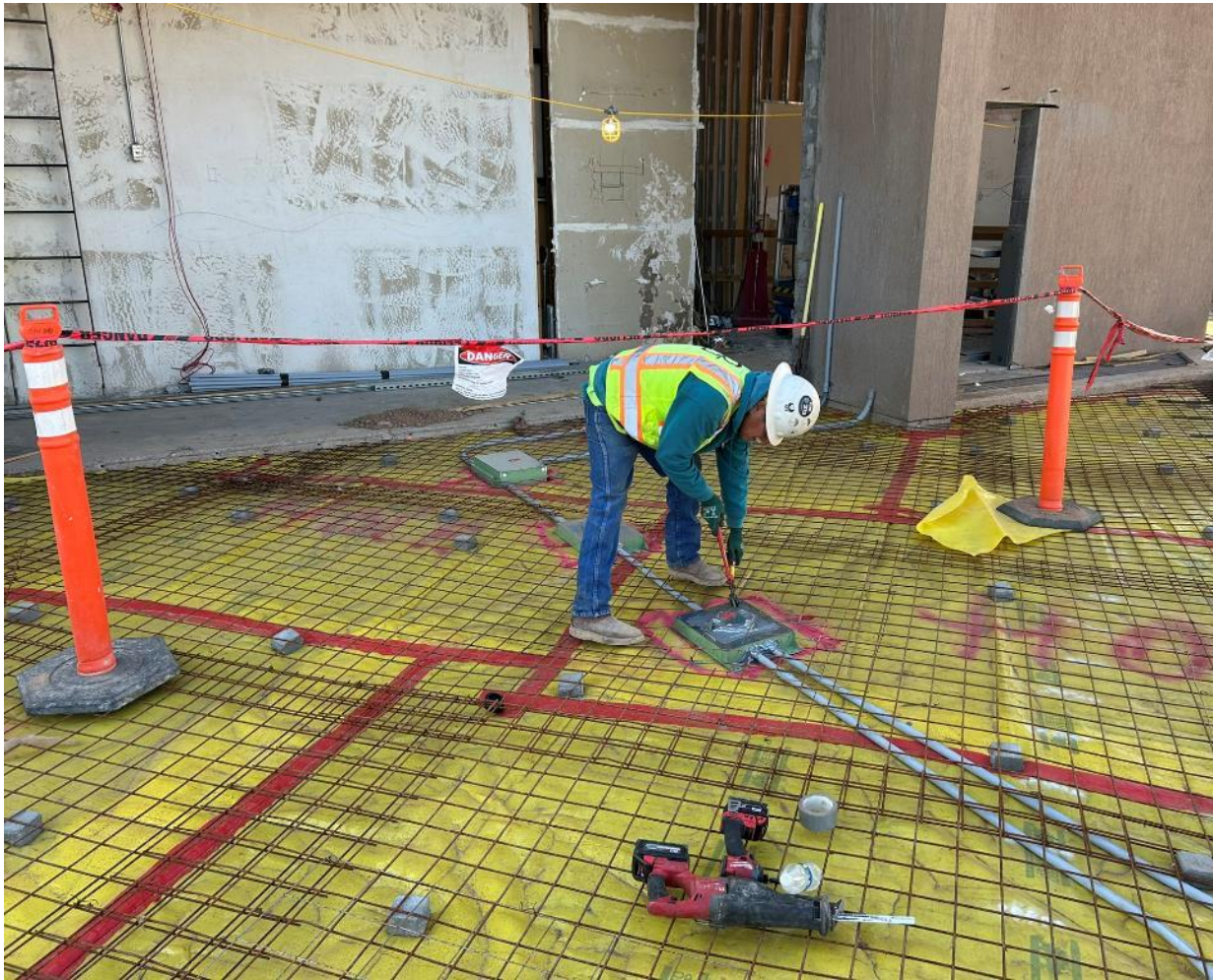




Service Entrance Section (SES)

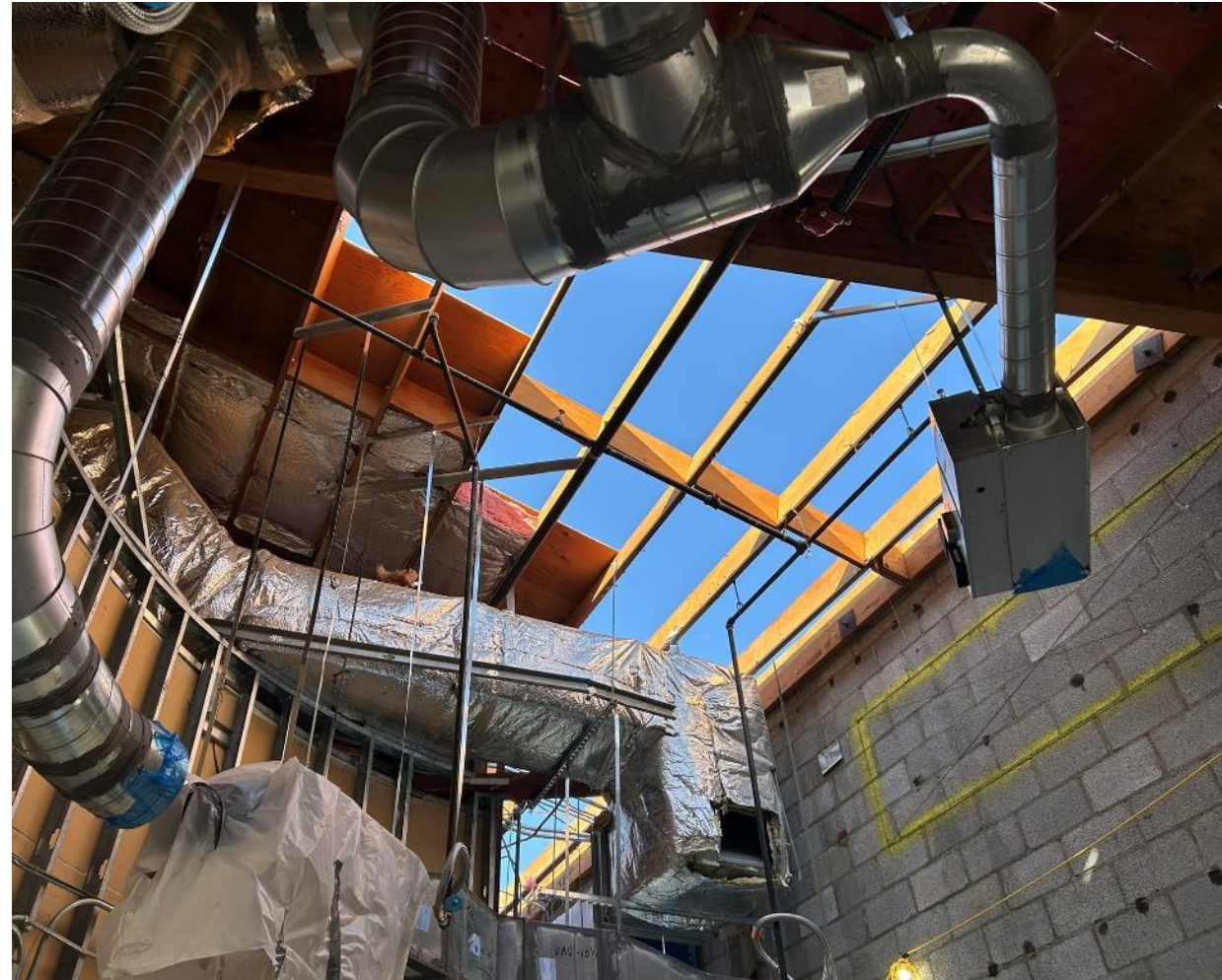


Council Chambers





Council Chambers-Roof





Council Chambers-Roof

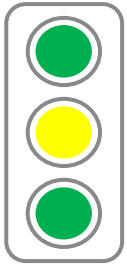


Council Chambers





In Progress



Scope
Schedule
Budget

- Masonry, elevator steel, interior stairs, roofing, plumbing rough & mechanical rough, interior framing
- Glazing Anchors on South and North elevations
- Steel for Council Chambers Expansion
- Service Entrance Section (SES) work

Next Month

- East Elevation Glazing/South Curtain Wall
- Steel arrives for Link and Amphitheater

Thank You

