



# Water Resources Update

June 10, 2025





# Water Resources Topics

---

## **For information and discussion:**

- Glendale's Water Supplies
- Glendale's Water Demands
- Post-2026 Colorado River Negotiations
- Drought Preparedness
- Next Steps



# Where does our water come from?

## DIVERSE WATER SUPPLIES

### Surface Water

Salt/Verde Rivers  
Colorado River



### Groundwater

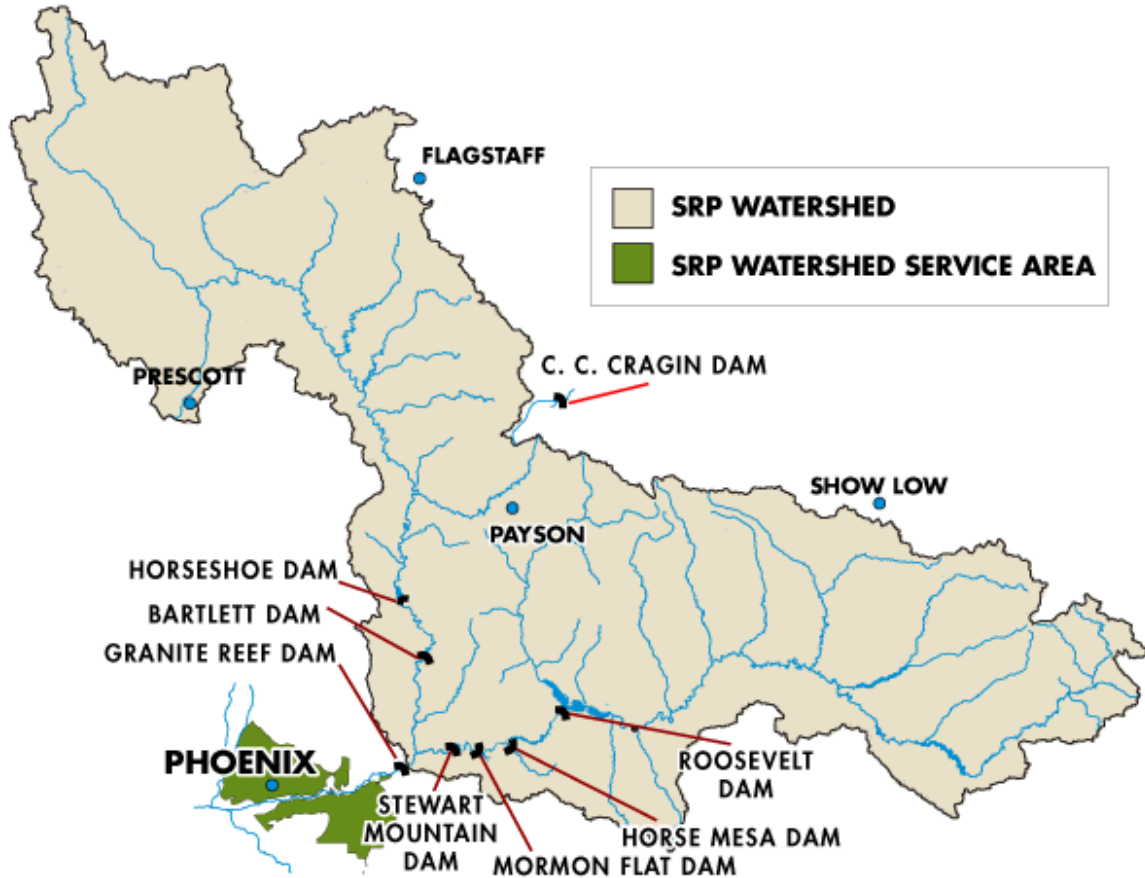


### Effluent (Reclaimed Water)





# Salt and Verde Rivers



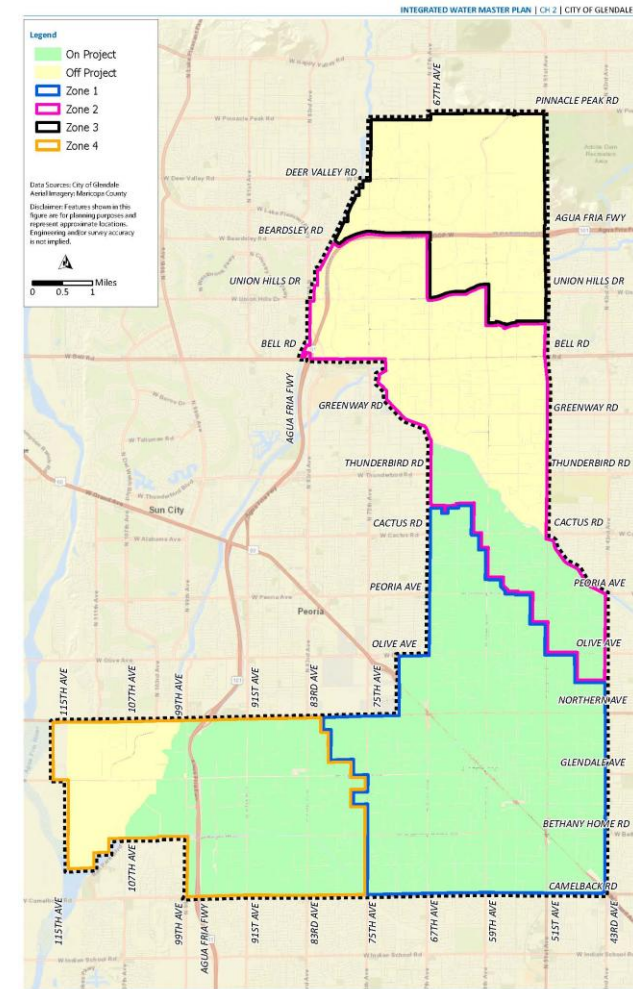
- Delivered via Salt River Project (SRP) canals to the Cholla and Oasis Water Treatment Plants.

**Annual SRP Supply = 55,455 Acre-Feet**



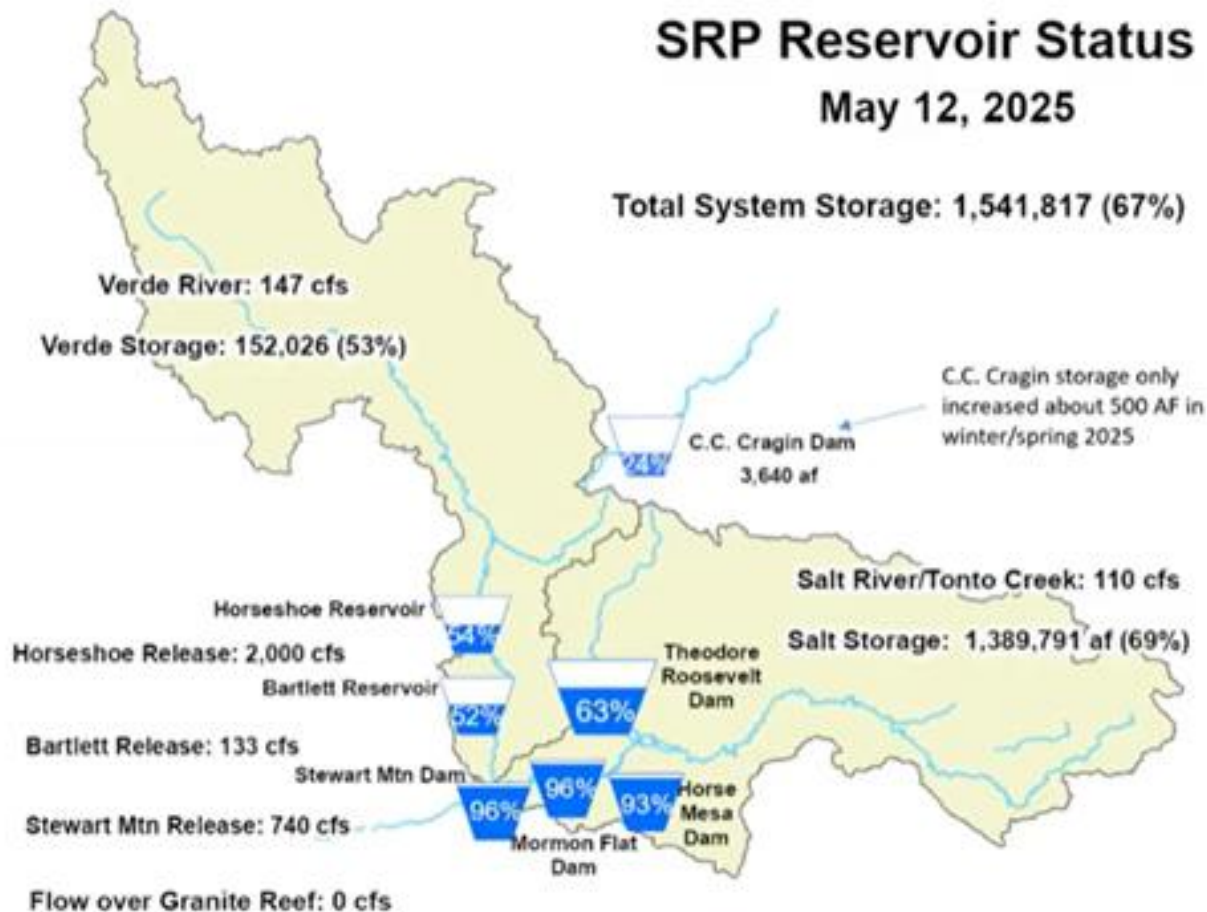
# Salt River Project (SRP) On-/Off-Project

- On-project = SRP member lands
- Off-project = Does not include SRP member lands.
  - Primarily CAP water is served off-project.
  - If SRP water is used, it needs to be replaced.





# Current Salt River Project Conditions

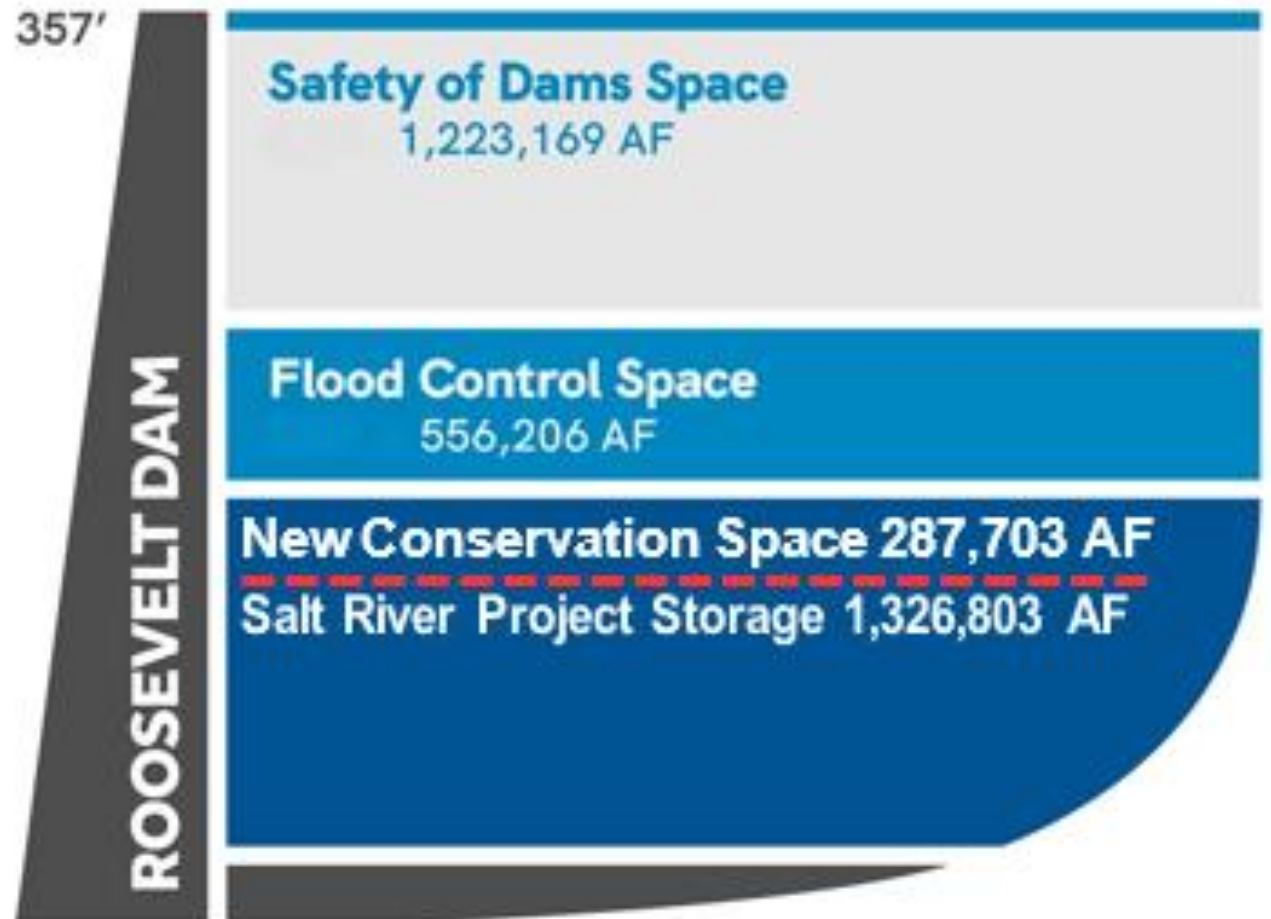


- 2024 Monsoon precipitation was third lowest on record.
- 2024-25 Winter precipitation was below average with spring runoff driest on record.
- As of May 12, Salt and Verde reservoirs are 67% full compared to 92% this time last year.



# Additional Supplies via SRP System

- Up to 27,250 AF for Glendale when the New Conservation Space (NCS) fills.
- NCS water can be stored in Roosevelt Lake or recharged.
- NCS water can be used off-project.

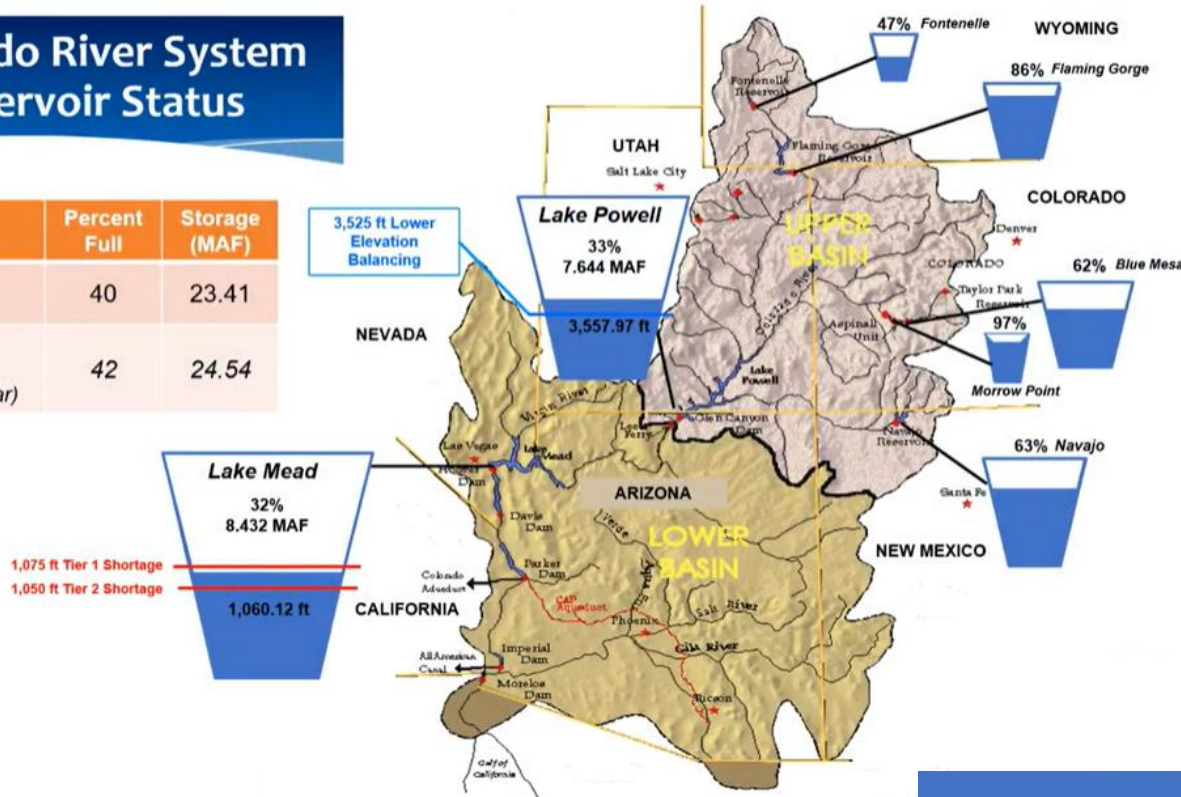




# Colorado River

## Colorado River System Reservoir Status

	Percent Full	Storage (MAF)
Total System Storage	40	23.41
Total System Storage (this time last year)	42	24.54



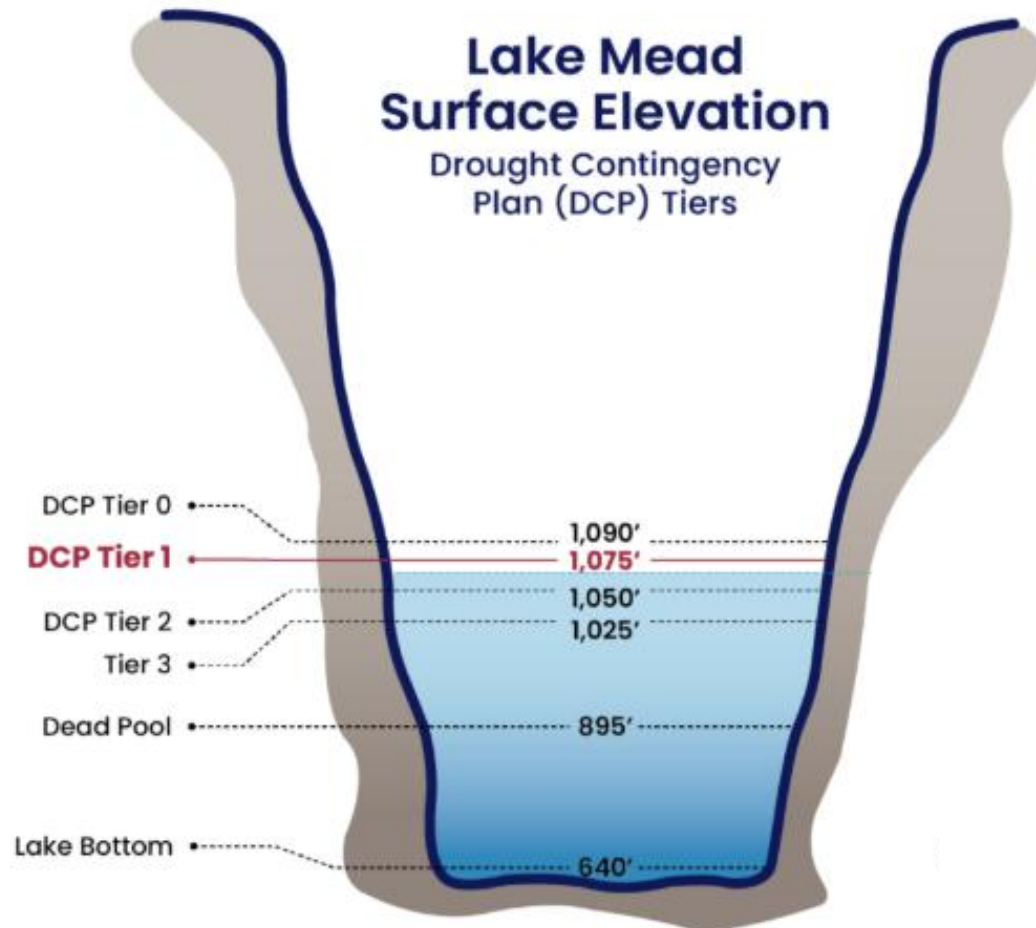
- Delivered via Central Arizona Project (CAP) canal to the Pyramid Peak Water Treatment Plant.
- Water from CAP can be used throughout City's water service area.

**Annual CAP Supply = 22,582 Acre-Feet**



# Current Colorado River Conditions

## CAP Delivery System under Tier 1



- Winter 2024-2025 precipitation was average. Spring runoff is below average.
- Reservoirs are at a combined 40% full compared to 42% this time last year.
- The Colorado River System is currently in a Tier 1 shortage.
- April 2025 24-Month Study: predicts Tier 1 shortage for 2026

# Groundwater



- Pumped from wells and treated onsite or at the Oasis Water Treatment Plant.
- 5 active City-owned wells.
  - Plus 5 wells in design/construction or planned
- City uses 7 SRP-owned wells.
  - Plus 1 well under construction

**Annual Groundwater Allocation = 7,525 Acre-Feet**



# Glendale Effluent Production and Use



- Recharge accounted for 70% of effluent use
- Reuse accounted for 30% of effluent use
- Wastewater sent to 91<sup>st</sup> Avenue Wastewater Treatment Plant
  - Palo Verde Nuclear Generating Station (PVNGS)
  - Tres Rios Wetlands

**2024 Effluent Production = 17,914 Acre-Feet**



# Long-Term Storage Credits (LTSCs)



- Store water underground for future use
- Typical annual accrual: 6,000-6,500 AF
- Total accrued through 2023: **203,073 AF**
- Recover credits through wells



# 2024 Glendale Total Potable Water Use

**2024 Total Water Use = 40,590 Acre-feet**

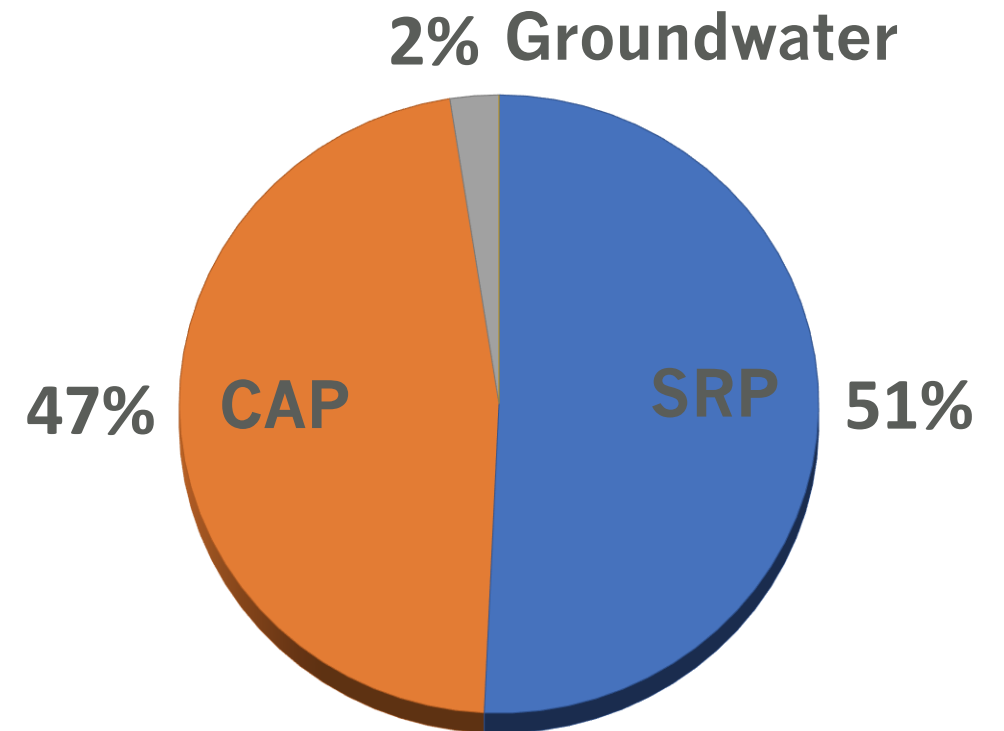
2023 Total Water Use = 37,477 Acre-feet

2022 Total Water Use = 38,699 Acre-feet

Central Arizona Project (CAP) - 47%

Salt River Project (SRP) - 51%

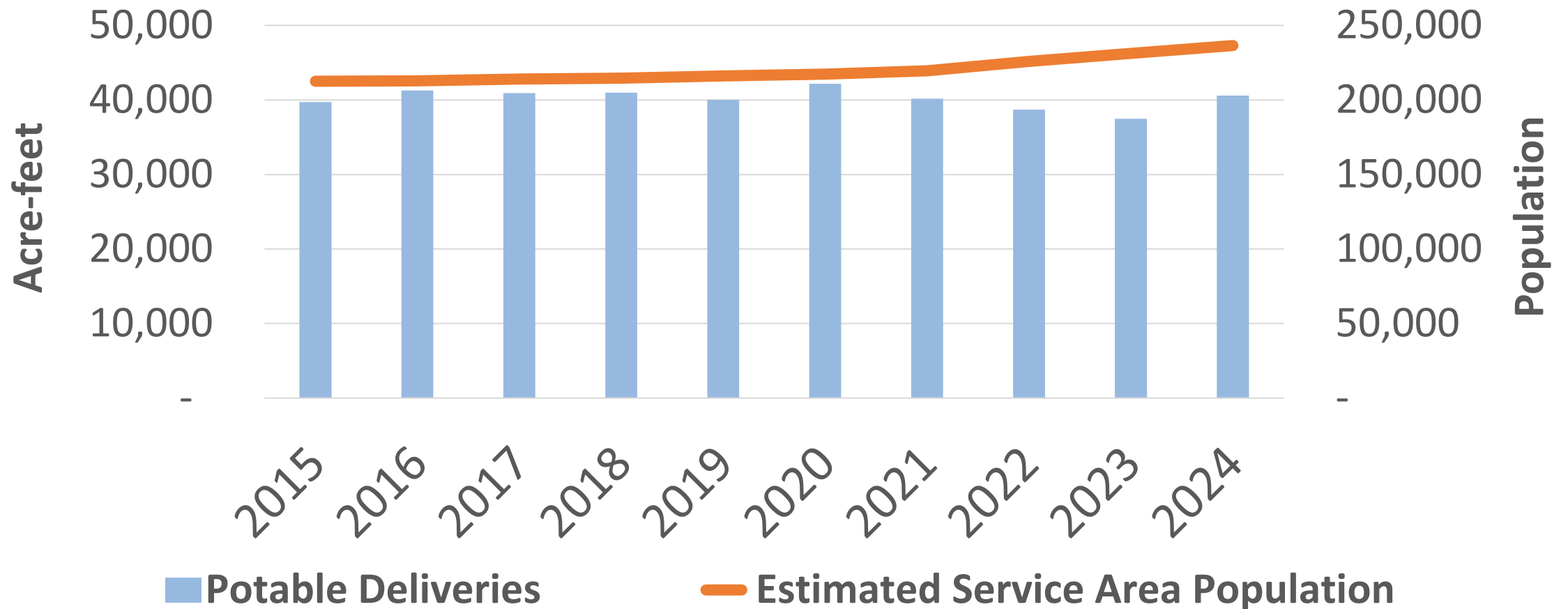
Groundwater (GW) - 2%





# Potable Water Use from 2015 to 2024

Estimated Service Area Population and Potable Water Use 2015 - 2024





# New Colorado River Operations in 2027



## Reclamation

Responsible for developing the Post-2026 Guidelines



## 7 Basin States & Mexico

UDS - Wyoming, Colorado, Utah, New Mexico  
LDS - Nevada, California, Arizona



## Arizona

Arizona Department of Water Resources  
Central Arizona Project



## Stakeholders

Tribes, Municipalities, Irrigation Districts,  
Conservation Groups

- The current operating guidelines for the Colorado River expire in 2026.
- Ongoing negotiations between the Basin States.
- The exact reductions to the Central Arizona Project are unknown, but cuts could be up to 100%.
- We are preparing for different water shortage scenarios.



# Glendale's Planning Efforts

Operational Scenario	Reduction	CAP Available
<u>Normal (no cuts to CAP)</u>	Not Applicable	22,582
<u>25% Cut to CAP</u>	5,646	16,936
<u>50% Cut to CAP</u>	11,291	11,291
<u>75% Cut to CAP</u>	16,936	5,646

*All volumes are in acre-feet*

- Increase groundwater use up to 7,525 AF per year
- Use NCS water (~24,000 AF)
- Recover LTSCs (203,073 AF)



# Long-Term Water Resource Supplies



Evaluating options to address loss of storage capacity in Verde River reservoirs. Potential expansion of Bartlett Dam to enlarge reservoir's water storage capacity



Advanced Water Purification

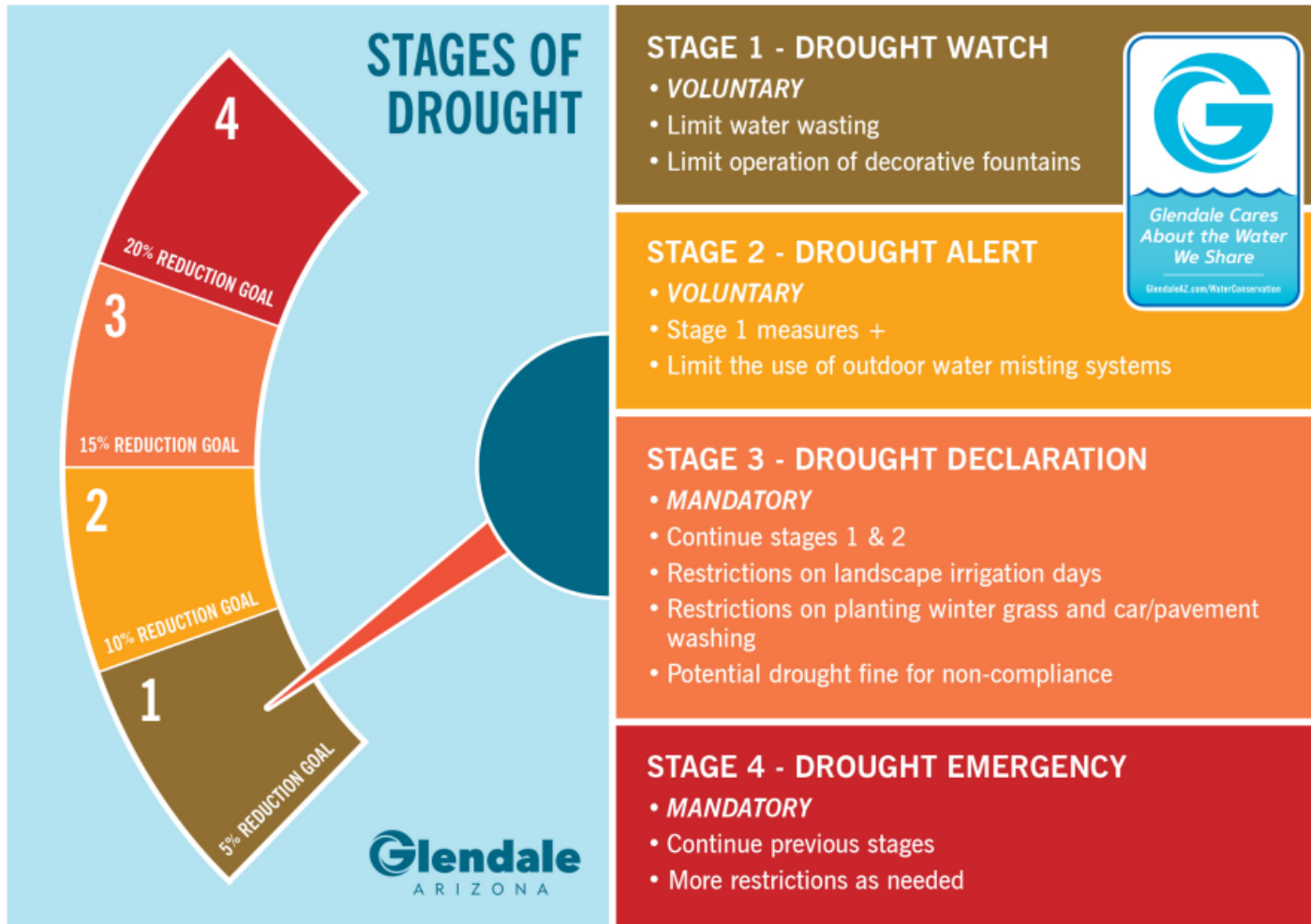


Clean Air, Safe Water,  
Healthy Land for Everyone

Sending high-quality effluent through an advanced water treatment process to create drinking water.



# Stages of Drought Management Plan



The Drought Management Plan is for residents and businesses in the Glendale water service area.



# Water Conservation Rebates Expanded in FY 23

City of Glendale

## RESIDENTIAL REBATES

**Glendale**  
WATER SERVICES

**IRRIGATION TECHNOLOGY**

UP TO **\$750**

**LANDSCAPE**

UP TO **\$3000**  
for xeriscape (\$1.00/SF)

UP TO **\$250**  
for artificial grass (\$0.25/SF)

**POOL/SPA REMOVAL**

UP TO **\$800**

**ENERGY STAR CLOTHES WASHER**

UP TO **\$200**

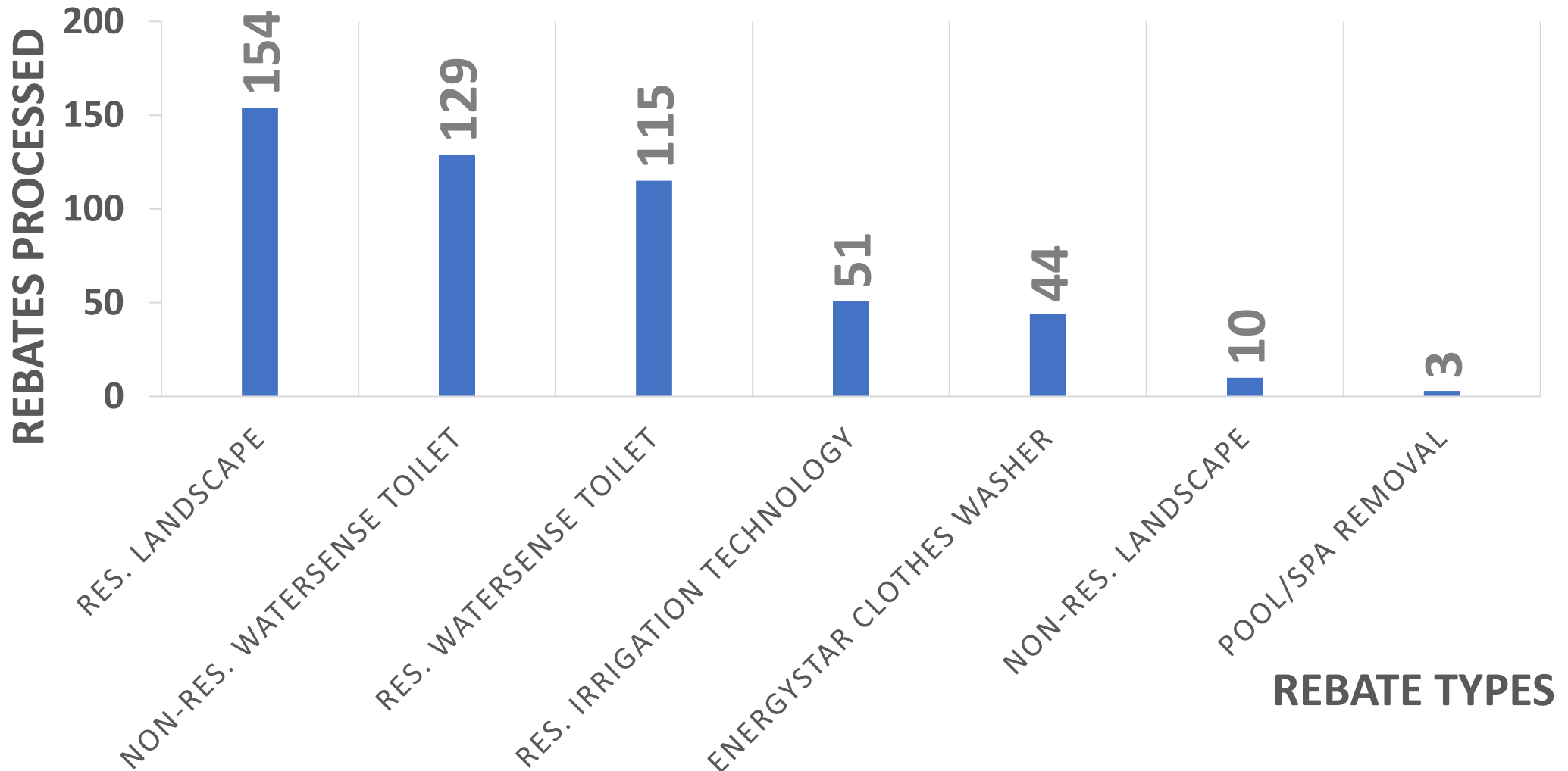
**WATERSENSE TOILET**

UP TO **\$100**

The infographic features a central house silhouette divided into two sections. The left section is yellow and contains an icon of a blue clothes washer. The right section is light blue and contains an icon of a blue toilet. To the left of the house is an icon of a pool/spa with a ladder. To the right is an icon of an irrigation system with a central pipe and multiple nozzles. Below that is an icon of various landscape plants including a cactus and succulents. The background is light blue with white clouds.



# Water Conservation Rebates Since FY23





## Next Steps

---

- Continue outreach to community and promote water conservation rebates.
  
- Continue to monitor Colorado River conditions and prepare for reductions in water supplies.
  - Groundwater wells
  - Verde Reservoirs project
  - Advanced Water Purification
  
- Begin update to City's Drought Management Plan for post-2026 Colorado River operating guidelines.



Thank you. Questions?

