



# Reems & Myrtle Industrial Annexation AN-271 ADOPTION

City Council Voting Hearing - February 24, 2026








# Annexation

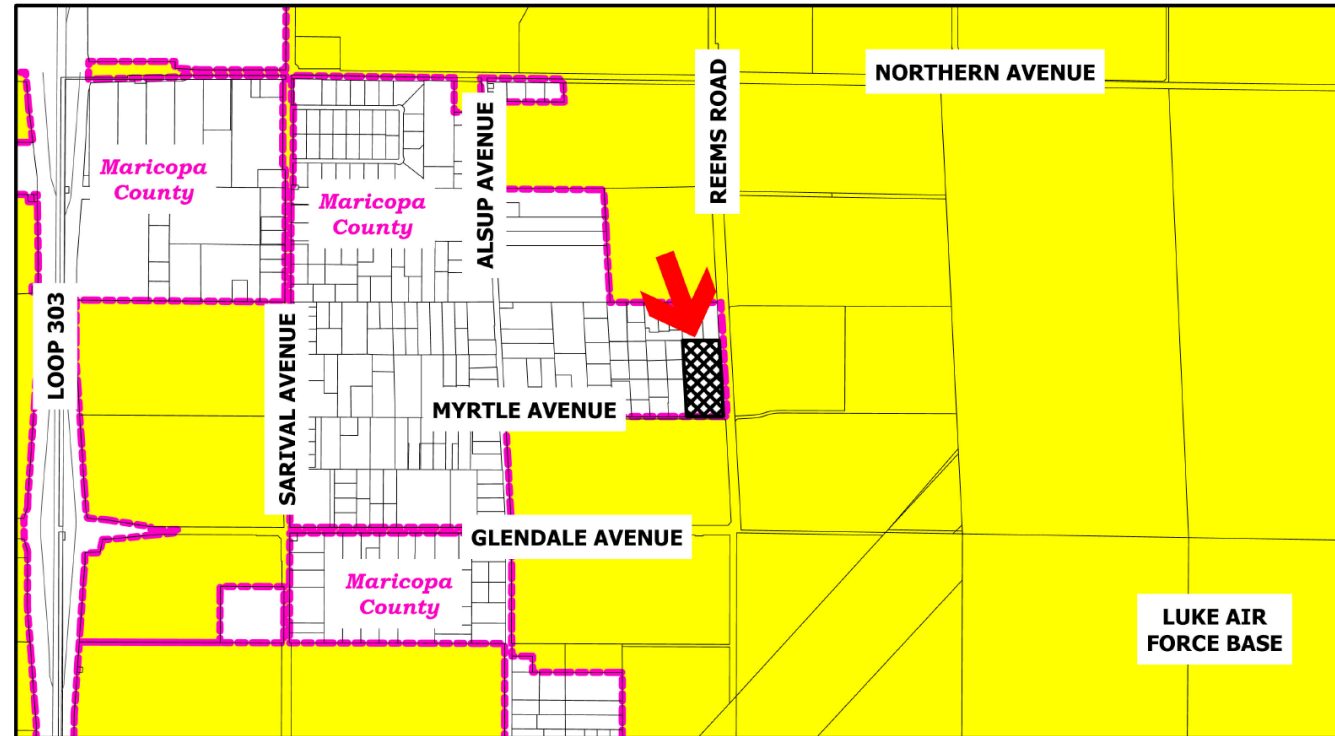
---

- Reems & Myrtle Industrial is an 9.4-acre property located at the northwest corner of Reems Road and Myrtle Avenue.
- County jurisdiction zoning is RU-43.
- Proposal is to rezone the property to PAD for approximately 26,056 square feet of building area for industrial use.





# Annexation Map

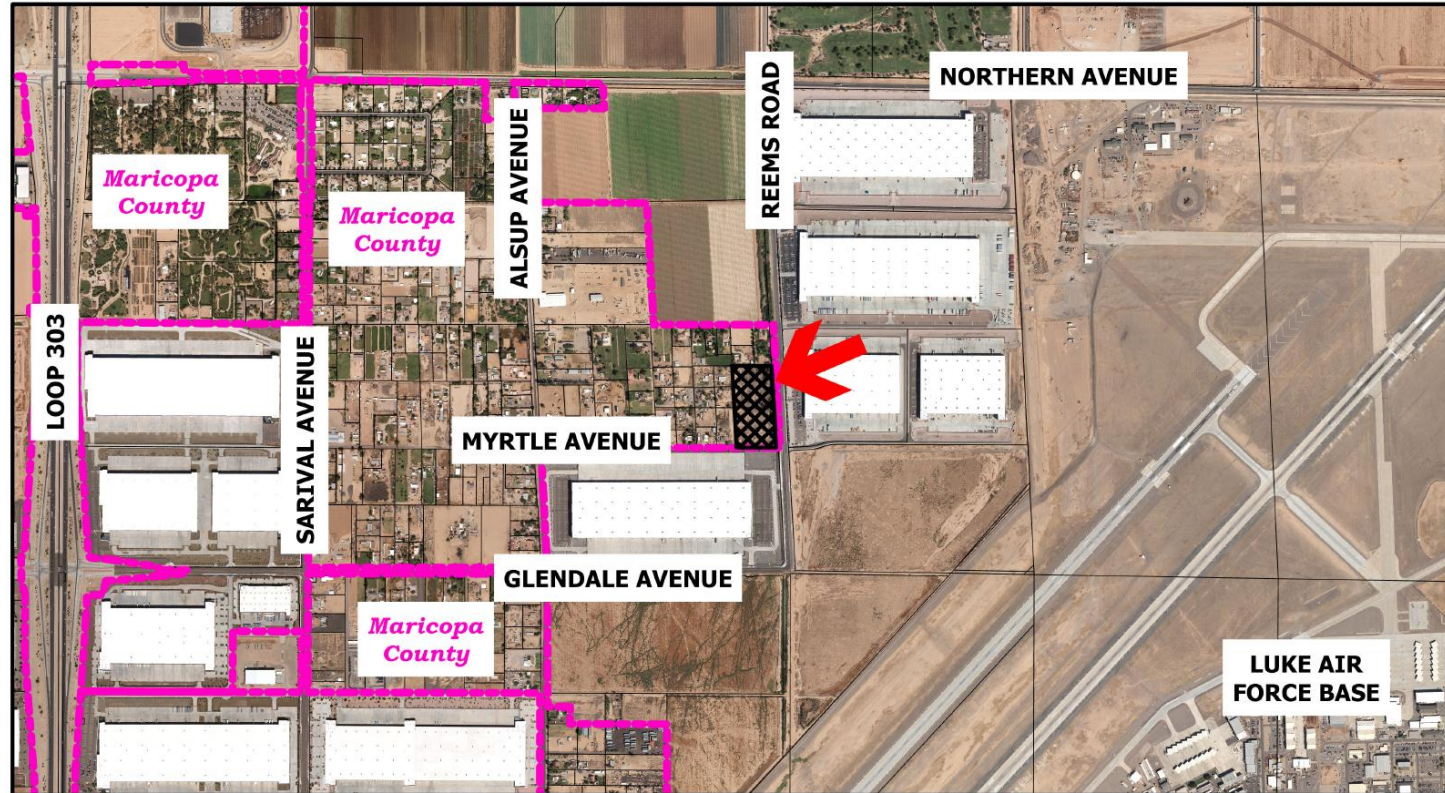
-  Glendale City Boundaries
-  City of Glendale
-  Proposed Annexation





# Aerial Map

-  Glendale City Boundaries
-  Proposed Annexation





# Reems & Myrtle Industrial Annexation AN-271 ADOPTION

City Council Voting Hearing - February 24, 2026

