

ADOT CAR No.: IGA 22-0008481-I
Amendment No. One: 25-0011095-I
AG Contract No.: P0012022000486
Project Location/Name: SR101 (Agua
Fria): 75th Avenue to I-17
Aesthetic Enhancements
Type of Work: General Purpose Lanes
Federal-aid No.: 101-A(214)T
ADOT Project No.: F0316 01C
TIP/STIP No.: 46658/100828
CFDA No.: 20.205 - Highway Planning and
Construction
Budget Source Item No.: 8894

**AMENDMENT NO. ONE
TO
INTERGOVERNMENTAL AGREEMENT**

BETWEEN
THE STATE OF ARIZONA
AND
THE CITY OF GLENDALE

THIS AMENDMENT NO. ONE to INTERGOVERNMENTAL AGREEMENT (the “Amendment No. One”), is entered into this date _____, pursuant to Arizona Revised Statutes (“A.R.S.”) §§ 11-951 through 11-954, as amended, between the STATE OF ARIZONA, acting by and through its DEPARTMENT OF TRANSPORTATION (the “State” or “ADOT”) and the City of Glendale, acting by and through its MAYOR and CITY COUNCIL (the “City” or “Local Agency”). The State and the City are each individually referred to as a “Party” and are collectively referred to as the “Parties.”

WHEREAS, the INTERGOVERNMENTAL AGREEMENT, IGA 22-0008481-I, A.G. Contract No. P0012022000486, was executed on December 20, 2023, (the “Original Agreement”);

WHEREAS, the State is empowered by A.R.S. § 28-401 to enter into this Amendment No. One and has delegated to the undersigned the authority to execute this Amendment No. One on behalf of the State;

WHEREAS, the City is empowered by A.R.S. § 48-572 to enter into this Amendment No. One and has by resolution, if required, a copy of which is attached and made a part of, resolved to enter into this Amendment No. One and has authorized the undersigned to execute this Amendment No. One on behalf of the City; and

NOW THEREFORE, in consideration of the mutual terms expressed herein, the purpose of this Amendment No. One is to revise the project description to include City aesthetics work and increase design and construction costs; Exhibit A is revised and replaced accordingly. The Parties desire to amend the Original Agreement, as follows:

The Parties incorporate the paragraphs set forth above as part of the body of this Amendment No. One.

I. RECITALS

Section I, Paragraphs 4. and 7. are revised, and Paragraph 6. is added, as follows:

4. As part of the Project, the State will remove and relocate the existing flush hydrant and Ductile Iron Piping (DIP), in conflict with the Project improvements on the south side of the Project just east of 59th Ave as shown in Exhibit C, (the "Waterline Work"). As part of the Waterline Work, the City has requested enhancements including installation of a new 48-inch diameter concrete pump out manhole with 30-inch frame and cover, new valve and casing extensions with frames and covers. The estimated cost of the Waterline Work is \$132,632. The cost to remove and relocate the existing flush hydrant and DIP will be deducted from the Waterline Work at an amount not to exceed \$24,325. The cost of the Waterline Work estimated at \$108,307 has been invoiced and paid by the City as shown in Exhibit D. The City will be responsible for actual Waterline Work costs minus \$24,325. The City will provide the design for the City's Waterline Work to the State.
6. The Project includes additional aesthetic enhancements; i.e., Land Form Graphics (LFGs), and post applied icons on bridges and slope paving at locations as shown in Exhibit A, (the "Aesthetic Enhancements"). The City will be solely responsible for the costs associated with the design and construction of one LFG on the freeway embankment slope at 59th Avenue, two post applied icons on west concrete slope paving at 51st Avenue, and two post applied icons on the west bridge abutment at 51st Avenue, estimated at \$135,000 as shown in Exhibit D. The City will be responsible for maintenance of the Aesthetic Enhancements.
7. The Original Agreement, including Amendment Number One, does not cancel or supersede IGA 97-043-I, but will take precedence in the event any questions arise between the State and the City pertaining to maintenance responsibilities within the Project area.

II. SCOPE OF WORK

Section II, Paragraphs 2.b., d., and m. are revised, and Paragraphs 2.o. and p. are added, as follows:

2. The State will:
 - b. After this Agreement is executed, invoice the City \$135,000 for the estimated costs associated with Aesthetic Enhancements. After the Project has been completed, the State will either invoice or reimburse the City for the difference between the estimated and actual costs of the City's Aesthetic Enhancements.
 - d. Prepare and provide the design plans, specifications and other such documents and services required for the construction bidding and construction of the Project including the Aesthetic Enhancements and incorporate comments from the City as appropriate.

- m. Be responsible for the structural integrity of the screen and sound wall, the graffiti abatement on mainline and ramps, the structural and nonstructural maintenance of the expanded metal pedestrian fencing on the bridges over the SR101L.
- o. Maintain the structural integrity of the concrete slope paving and bridge abutments on which the icons are placed.
- p. Continue to maintain all freeway overhead sign supports (structure and signs) that are located along the crossroads.

Section II, Paragraphs 3.b. and d. are revised, and Paragraphs 3.r. and s. are added, as follows:

- 3. The City will:
 - b. Within 30 days of receipt of an invoice from the State, pay to the State \$135,000 for the estimated costs associated with the Aesthetic Enhancements. After the Project has been completed, the State will either invoice or reimburse the City for the difference between estimated and actual costs of the Aesthetic Enhancements.
 - d. Review the design documents required for construction of the Project including Aesthetic Enhancements and provide comments to the State as appropriate. Work within the design timeframes set forth by the State to not delay the Project.
 - r. Maintain the LFGs including keeping the surrounding slope areas free of weeds, undesirable grasses, and litter/trash and repair damage from erosion, errant vehicles, or vandalism.
 - s. Maintain the coiled snake and saguaro post applied icons on the west side of 51st Avenue which includes maintaining paint condition and structural integrity of the icons.

III. MISCELLANEOUS PROVISIONS

- 1. Notices. All notices or demands upon any Party to this Agreement shall be in writing and shall be delivered electronically, in person, or sent by mail, addressed as follows:

For Agreement Administration:

Arizona Department of Transportation
Joint Project Agreement Section
205 S. 17th Avenue, Mail Drop 637E
Phoenix, AZ 85007
JPABranch@azdot.gov

City of Glendale
Attn: Purab Adabala
6210 W Myrtle Avenue, Suite 112
Glendale, AZ 85301
623.930.2926
padabala@glendaleaz.com

For Project Administration:

Arizona Department of Transportation
Project Management Group
205 S. 17th Avenue, Mail Drop 614E
Phoenix, AZ 85007
PMG@azdot.gov

City of Glendale
Attn: Purab Adabala
6210 W Myrtle Avenue, Suite 112
Glendale, AZ 85301
623.930.2926
padabala@glendaleaz.com

EXCEPT AS AMENDED, ALL OTHER terms and conditions of the Original Agreement remain in full force and effect.

Remainder of this page is intentionally left blank.

(Signatures begin on the next page)

THIS AMENDMENT NO. ONE shall become effective upon the full completion of signing and dating by all Parties to this Amendment No. One.

IN ACCORDANCE WITH A.R.S. § 11-952 (D), the written determination of each Party's legal counsel providing that the Parties are authorized under the laws of this State to enter into this Amendment No. One and that the Amendment No. One is in proper form is set forth below.

IN WITNESS WHEREOF, the Parties have executed this Amendment No. One the day and year first above written.

CITY OF GLENDALE

By _____ Date _____
JERRY P. WEIERS
Mayor

ATTEST:

By _____ Date _____
JULIE K. BOWER
City Clerk

I have reviewed the above referenced Amendment No. One to the Original Agreement between the State of Arizona, acting by and through its Department of Transportation, and the City of Glendale, an agreement among public agencies which, has been reviewed pursuant to A.R.S. §§ 11-951 through 11-954 and A.R.S. § 48-572 and declare this Amendment No. One to be in proper form and within the powers and authority granted to the City under the laws of the State of Arizona.

No opinion is expressed as to the authority of the State to enter into this Amendment No. One.
Approved as to Form:

By _____ Date _____
City Attorney

ARIZONA DEPARTMENT OF TRANSPORTATION

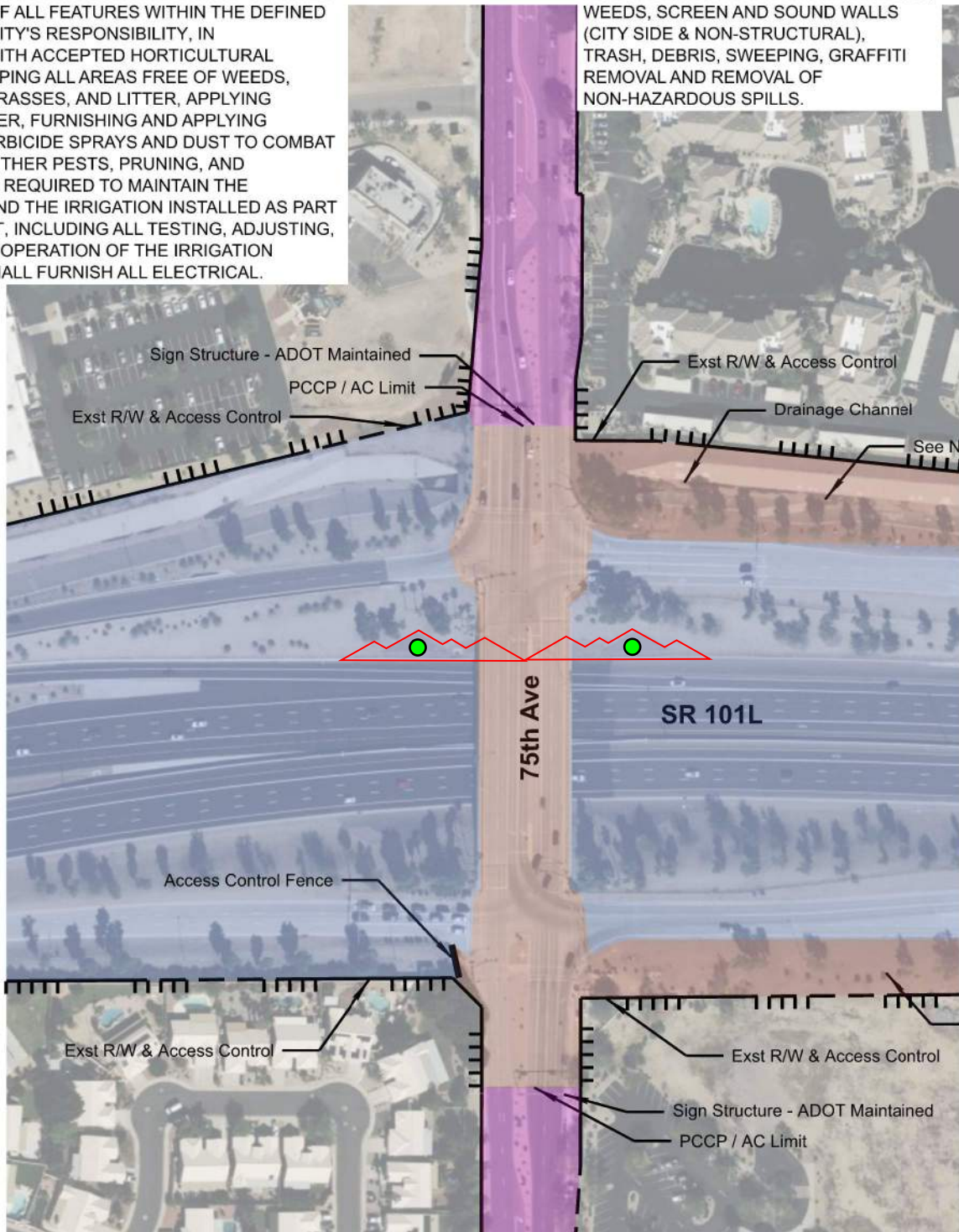
By _____ Date _____
MATT MOUL, PE
Project Delivery and Operations
Division Director

This Amendment No. One, an Agreement between public agencies, the State of Arizona and the City of Glendale has been reviewed pursuant to A.R.S. §§ 11-951 through 11-954 and A.R.S. § 28-401 by the undersigned Assistant Attorney General who has determined that it is in the proper form and is within the powers and authority granted to the State of Arizona. No opinion is expressed as to the authority of the remaining Parties, other than the State or its agencies, to enter into said Amendment No. One.

By _____ Date _____
Assistant Attorney General

NOTE 1:
 PROVIDE LANDSCAPE AND CONCRETE LINED CHANNEL MAINTENANCE IN ACCORDANCE WITH IGA 97-043-I. PROVIDE LANDSCAPE AND CONCRETE LINED CHANNEL MAINTENANCE OF ALL FEATURES WITHIN THE DEFINED AREAS OF THE CITY'S RESPONSIBILITY, IN ACCORDANCE WITH ACCEPTED HORTICULTURAL PRACTICES, KEEPING ALL AREAS FREE OF WEEDS, UNDESIRABLE GRASSES, AND LITTER, APPLYING IRRIGATION WATER, FURNISHING AND APPLYING INSECTICIDE/HERBICIDE SPRAYS AND DUST TO COMBAT DISEASES AND OTHER PESTS, PRUNING, AND REPLANTING, AS REQUIRED TO MAINTAIN THE LANDSCAPING AND THE IRRIGATION INSTALLED AS PART OF THE PROJECT, INCLUDING ALL TESTING, ADJUSTING, REPAIRING, AND OPERATION OF THE IRRIGATION SYSTEM, AND SHALL FURNISH ALL ELECTRICAL.

NOTE 2:
 MAINTENANCE OF CROSSROAD AND/OR SIDE STREET RESPONSIBILITIES INCLUDE MEDIAN DIVIDERS AND PAVERS, WEEDS, SCREEN AND SOUND WALLS (CITY SIDE & NON-STRUCTURAL), TRASH, DEBRIS, SWEEPING, GRAFFITI REMOVAL AND REMOVAL OF NON-HAZARDOUS SPILLS.



LEGEND:
 MAINTENANCE RESPONSIBILITIES

- ADOT ROW AND MAINTAINED
- ADOT ROW MAINTAINED BY CITY OF GLENDALE ●
- CITY OF GLENDALE ROW MAINTAINED BY CITY OF GLENDALE

● THE CITY OF GLENDALE WILL MAINTAIN THE LANDFORM GRAPHICS ON SR 101L. THIS INCLUDES MAINTAINING THE DECOMPOSED GRANITE AND BRICK PAVERS, KEEPING THE SURROUNDING SLOPE AREAS FREE OF WEEDS, UNDESIRABLE GRASSES, AND LITTER/TRASH, AND DAMAGE REPAIR FROM EROSION, ERRANT VEHICLES, OR VANDALISM.

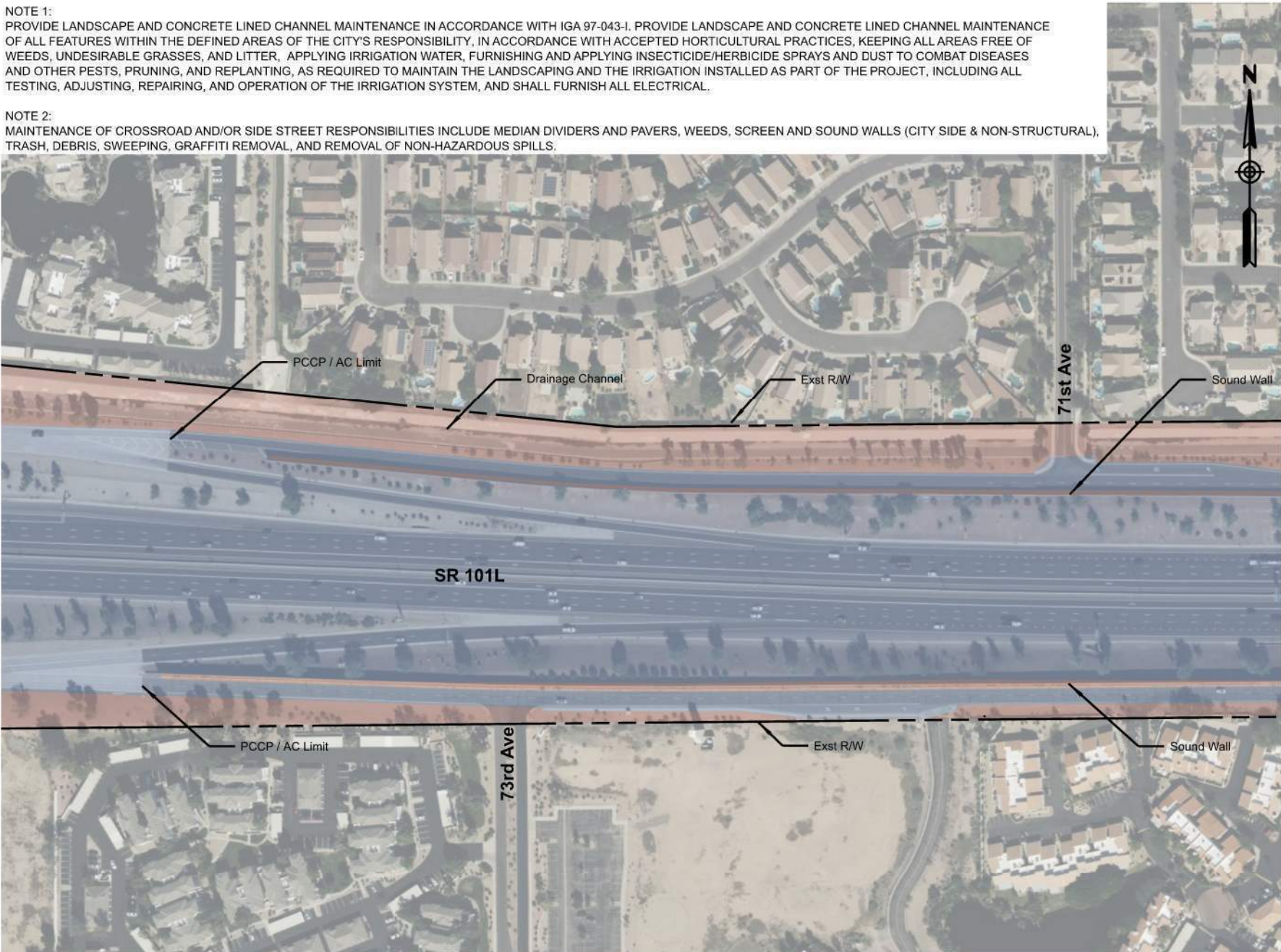
● SEE NOTE 1 FOR LANDSCAPING RESPONSIBILITIES, SEE NOTE 2 FOR CROSSROAD RESPONSIBILITIES

NOTE: ADOT IS RESPONSIBLE FOR THE STRUCTURAL INTEGRITY OF PCCP, TI OP BRIDGE, SCREEN AND SOUND WALLS, THE GRAFFITI ABATEMENT ON MAINLINE AND RAMPS, THE STRUCTURAL AND NONSTRUCTURAL MAINTENANCE OF THE EXPANDED METAL PEDESTRIAN FENCING ON THE BRIDGES OVER THE SR 101L.

EXHIBIT	ARIZONA DEPARTMENT OF TRANSPORTATION	EXHIBIT A: MAINTENANCE LIMITS	
 <small>333 East Camelback Road, Suite 800 Phoenix, Arizona 85016 Phone 602 333-2000</small>	City of Glendale Intergovernmental Agreement No. _____	ROUTE SR 101L	LOCATION SR 101L and 75th Avenue

NOTE 1:
 PROVIDE LANDSCAPE AND CONCRETE LINED CHANNEL MAINTENANCE IN ACCORDANCE WITH IGA 97-043-I. PROVIDE LANDSCAPE AND CONCRETE LINED CHANNEL MAINTENANCE OF ALL FEATURES WITHIN THE DEFINED AREAS OF THE CITY'S RESPONSIBILITY, IN ACCORDANCE WITH ACCEPTED HORTICULTURAL PRACTICES, KEEPING ALL AREAS FREE OF WEEDS, UNDESIRABLE GRASSES, AND LITTER. APPLYING IRRIGATION WATER, FURNISHING AND APPLYING INSECTICIDE/HERBICIDE SPRAYS AND DUST TO COMBAT DISEASES AND OTHER PESTS, PRUNING, AND REPLANTING, AS REQUIRED TO MAINTAIN THE LANDSCAPING AND THE IRRIGATION INSTALLED AS PART OF THE PROJECT, INCLUDING ALL TESTING, ADJUSTING, REPAIRING, AND OPERATION OF THE IRRIGATION SYSTEM, AND SHALL FURNISH ALL ELECTRICAL.

NOTE 2:
 MAINTENANCE OF CROSSROAD AND/OR SIDE STREET RESPONSIBILITIES INCLUDE MEDIAN DIVIDERS AND PAVERS, WEEDS, SCREEN AND SOUND WALLS (CITY SIDE & NON-STRUCTURAL), TRASH, DEBRIS, SWEEPING, GRAFFITI REMOVAL, AND REMOVAL OF NON-HAZARDOUS SPILLS.



LEGEND:
 MAINTENANCE RESPONSIBILITIES

ADOT ROW AND MAINTAINED

ADOT ROW MAINTAINED BY CITY OF GLENDALE ●

● SEE NOTE 1 FOR LANDSCAPING RESPONSIBILITIES
 ● SEE NOTE 2 FOR SOUND WALL RESPONSIBILITIES

NOTE: ADOT IS RESPONSIBLE FOR THE STRUCTURAL INTEGRITY OF PCCP, SCREEN AND SOUND WALLS, THE GRAFFITI ABATEMENT ON MAINLINE AND RAMPS.

EXHIBIT A:
 MAINTENANCE LIMITS

75TH AVE TO 67TH AVE (1 OF 2)

ARIZONA DEPARTMENT OF TRANSPORTATION

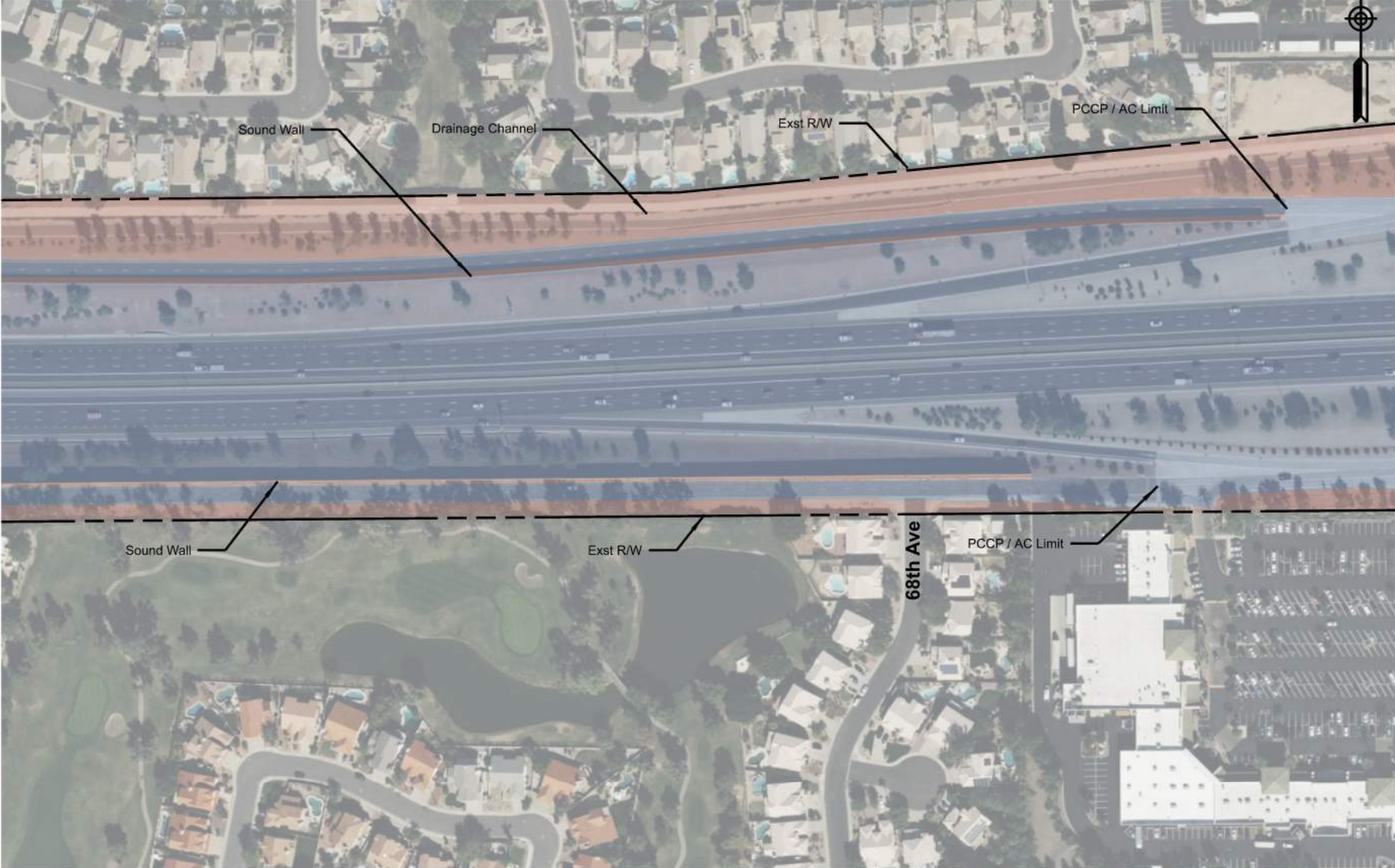
City of Glendale
 Intergovernmental Agreement No. _____

233 East Camelback Road, Suite 100
 Phoenix, AZ 85016
 Phone: 602.235.2329
 Stanley Consultants, Inc.

EXHIBIT

NOTE 1:
 PROVIDE LANDSCAPE AND CONCRETE LINED CHANNEL MAINTENANCE IN ACCORDANCE WITH IGA 97-043-I. PROVIDE LANDSCAPE AND CONCRETE LINED CHANNEL MAINTENANCE OF ALL FEATURES WITHIN THE DEFINED AREAS OF THE CITY'S RESPONSIBILITY, IN ACCORDANCE WITH ACCEPTED HORTICULTURAL PRACTICES, KEEPING ALL AREAS FREE OF WEEDS, UNDESIRABLE GRASSES, AND LITTER. APPLYING IRRIGATION WATER, FURNISHING AND APPLYING INSECTICIDE/HERBICIDE SPRAYS AND DUST TO COMBAT DISEASES AND OTHER PESTS, PRUNING, AND REPLANTING, AS REQUIRED TO MAINTAIN THE LANDSCAPING AND THE IRRIGATION INSTALLED AS PART OF THE PROJECT, INCLUDING ALL TESTING, ADJUSTING, REPAIRING, AND OPERATION OF THE IRRIGATION SYSTEM, AND SHALL FURNISH ALL ELECTRICAL.

NOTE 2:
 MAINTENANCE OF CROSSROAD AND/OR SIDE STREET RESPONSIBILITIES INCLUDE MEDIAN DIVIDERS AND PAVERS, WEEDS, SCREEN AND SOUND WALLS (CITY SIDE & NON-STRUCTURAL), TRASH, DEBRIS, SWEEPING, GRAFFITI REMOVAL, AND REMOVAL OF NON-HAZARDOUS SPILLS.



LEGEND:
 MAINTENANCE RESPONSIBILITIES

ADOT ROW AND MAINTAINED

ADOT ROW MAINTAINED BY CITY OF GLENDALE ●

● SEE NOTE 1 FOR LANDSCAPING RESPONSIBILITIES
 ● SEE NOTE 2 FOR SOUND WALL RESPONSIBILITIES

NOTE: ADOT IS RESPONSIBLE FOR THE STRUCTURAL INTEGRITY OF PCCP, SCREEN AND SOUND WALLS, THE GRAFFITI ABATEMENT ON MAINLINE AND RAMPS.

EXHIBIT A:
 MAINTENANCE LIMITS

75TH AVE TO 67TH AVE (2 OF 2)

ARIZONA DEPARTMENT OF TRANSPORTATION

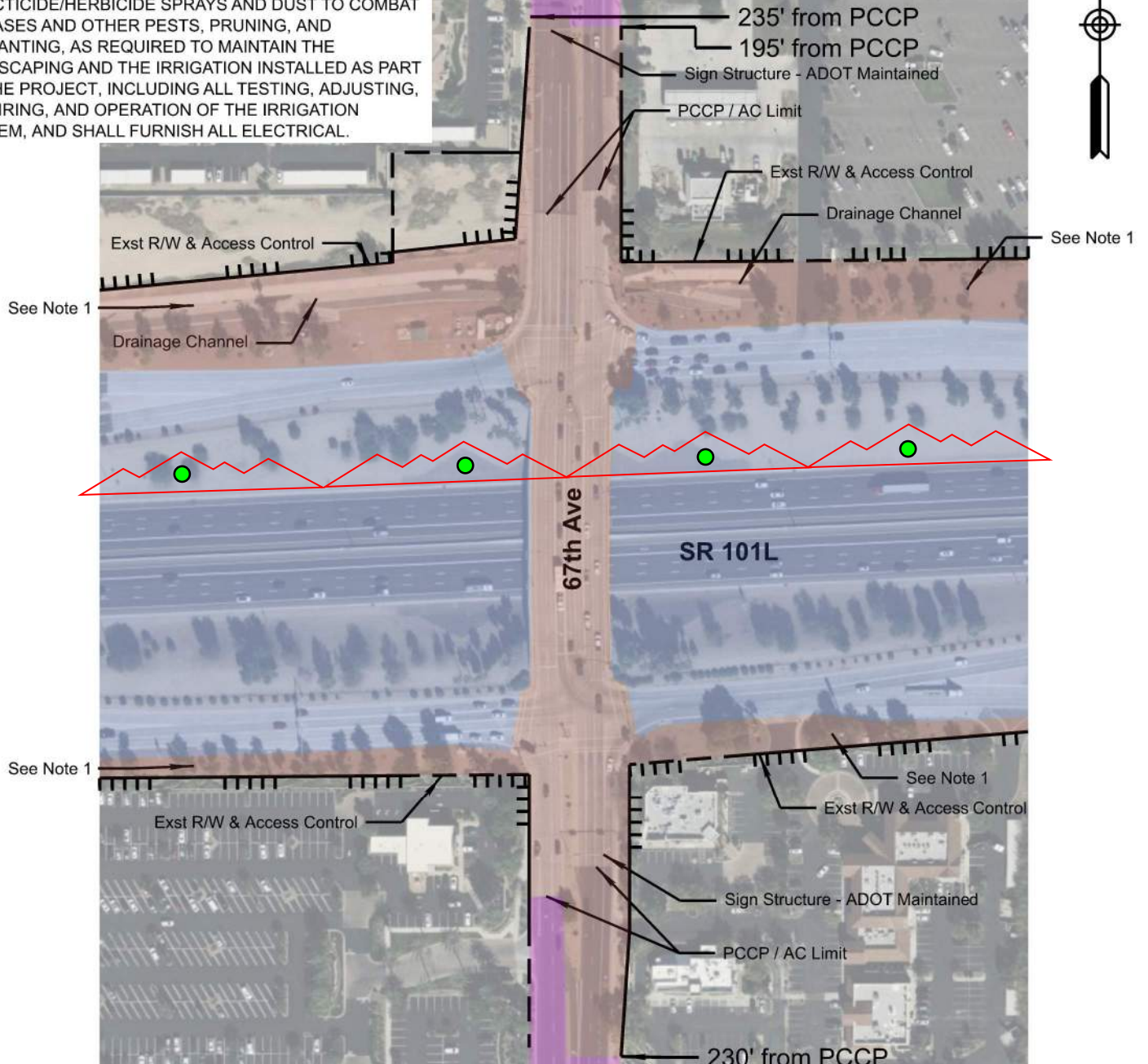
City of Glendale
 Intergovernmental Agreement No. _____

233 East Camelback Road, Suite 100
 Phoenix, AZ 85016
 Stanley Consultants, Inc.

EXHIBIT

NOTE 1:
 PROVIDE LANDSCAPE AND CONCRETE LINED CHANNEL MAINTENANCE IN ACCORDANCE WITH IGA 97-043-I. PROVIDE LANDSCAPE AND CONCRETE LINED CHANNEL MAINTENANCE OF ALL FEATURES WITHIN THE DEFINED AREAS OF THE CITY'S RESPONSIBILITY, IN ACCORDANCE WITH ACCEPTED HORTICULTURAL PRACTICES, KEEPING ALL AREAS FREE OF WEEDS, UNDESIRABLE GRASSES, AND LITTER, APPLYING IRRIGATION WATER, FURNISHING AND APPLYING INSECTICIDE/HERBICIDE SPRAYS AND DUST TO COMBAT DISEASES AND OTHER PESTS, PRUNING, AND REPLANTING, AS REQUIRED TO MAINTAIN THE LANDSCAPING AND THE IRRIGATION INSTALLED AS PART OF THE PROJECT, INCLUDING ALL TESTING, ADJUSTING, REPAIRING, AND OPERATION OF THE IRRIGATION SYSTEM, AND SHALL FURNISH ALL ELECTRICAL.

NOTE 2:
 MAINTENANCE OF CROSSROAD AND/OR SIDE STREET RESPONSIBILITIES INCLUDE MEDIAN DIVIDERS AND PAVERS, WEEDS, SCREEN AND SOUND WALLS (CITY SIDE & NON-STRUCTURAL), TRASH, DEBRIS, SWEEPING, GRAFFITI REMOVAL AND REMOVAL OF NON-HAZARDOUS SPILLS.



LEGEND:
 MAINTENANCE RESPONSIBILITIES

- ADOT ROW AND MAINTAINED
- ADOT ROW MAINTAINED BY CITY OF GLENDALE ●
- CITY OF GLENDALE ROW MAINTAINED BY CITY OF GLENDALE

● THE CITY OF GLENDALE WILL MAINTAIN THE LANDFORM GRAPHICS ON SR 101L. THIS INCLUDES MAINTAINING THE DECOMPOSED GRANITE AND BRICK PAVERS, KEEPING THE SURROUNDING SLOPE AREAS FREE OF WEEDS, UNDESIRABLE GRASSES, AND LITTER/TRASH, AND DAMAGE REPAIR FROM EROSION, ERRANT VEHICLES, OR VANDALISM.

● SEE NOTE 1 FOR LANDSCAPING RESPONSIBILITIES, SEE NOTE 2 FOR CROSSROAD RESPONSIBILITIES

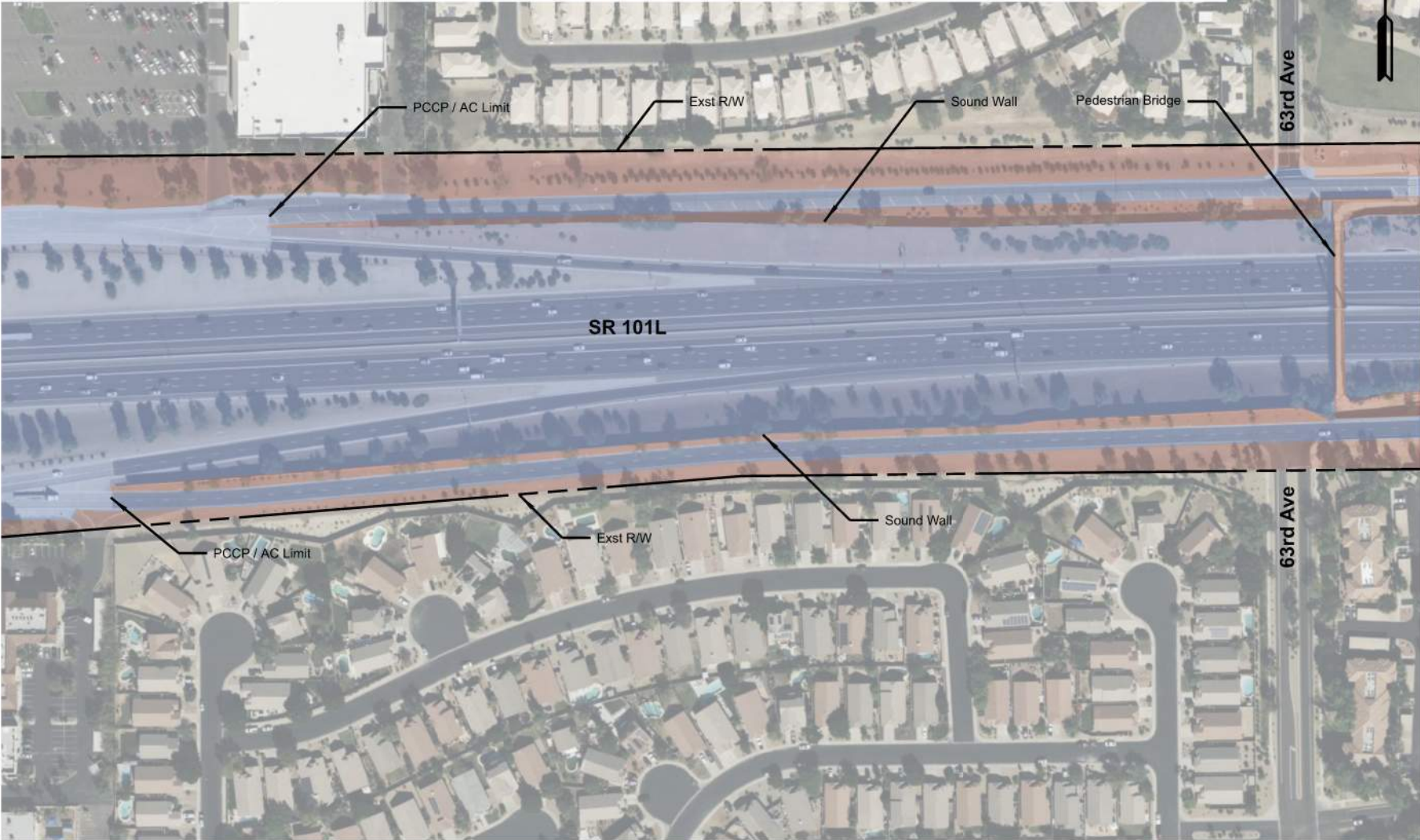
NOTE: ADOT IS RESPONSIBLE FOR THE STRUCTURAL INTEGRITY OF PCCP, TI OP BRIDGE, SCREEN AND SOUND WALLS, THE GRAFFITI ABATEMENT ON MAINLINE AND RAMPS, THE STRUCTURAL AND NONSTRUCTURAL MAINTENANCE OF THE EXPANDED METAL PEDESTRIAN FENCING ON THE BRIDGES OVER THE SR 101L.

EXHIBIT	ARIZONA DEPARTMENT OF TRANSPORTATION	EXHIBIT A: MAINTENANCE LIMITS	
 <small>333 East Camelback Road, Suite 800 Phoenix, AZ 85016 Phone 602 333-2000</small>	City of Glendale Intergovernmental Agreement No. _____	ROUTE: SR 101L	LOCATION: SR 101L and 67th Avenue

NOTE 1:
 PROVIDE LANDSCAPE AND CONCRETE LINED CHANNEL MAINTENANCE IN ACCORDANCE WITH IGA 97-043-I. PROVIDE LANDSCAPE AND CONCRETE LINED CHANNEL MAINTENANCE OF ALL FEATURES WITHIN THE DEFINED AREAS OF THE CITY'S RESPONSIBILITY, IN ACCORDANCE WITH ACCEPTED HORTICULTURAL PRACTICES, KEEPING ALL AREAS FREE OF WEEDS, UNDESIRABLE GRASSES, AND LITTER, APPLYING IRRIGATION WATER, FURNISHING AND APPLYING INSECTICIDE/HERBICIDE SPRAYS AND DUST TO COMBAT DISEASES AND OTHER PESTS, PRUNING, AND REPLANTING, AS REQUIRED TO MAINTAIN THE LANDSCAPING AND THE IRRIGATION INSTALLED AS PART OF THE PROJECT, INCLUDING ALL TESTING, ADJUSTING, REPAIRING, AND OPERATION OF THE IRRIGATION SYSTEM, AND SHALL FURNISH ALL ELECTRICAL.


NOTE 2:
 MAINTENANCE OF CROSSROAD AND/OR SIDE STREET RESPONSIBILITIES INCLUDE MEDIAN DIVIDERS AND PAVERS, WEEDS, SCREEN AND SOUND WALLS (CITY SIDE & NON-STRUCTURAL), TRASH, DEBRIS, SWEEPING, GRAFFITI REMOVAL, AND REMOVAL OF NON-HAZARDOUS SPILLS.

NOTE 3:
 RESPONSIBILITIES INCLUDE INSPECTING, MAINTAINING, AND OPERATING THE 63RD AVE / SR 101L PEDESTRIAN BRIDGE IN ACCORDANCE WITH IGA 07-032-I.



LEGEND:
 MAINTENANCE RESPONSIBILITIES

 ADOT ROW AND MAINTAINED

 ADOT ROW MAINTAINED BY CITY OF GLENDALE ●

● SEE NOTE 1 FOR LANDSCAPING RESPONSIBILITIES
 ● SEE NOTE 2 FOR SOUND WALL RESPONSIBILITIES
 ● SEE NOTE 3 FOR PEDESTRIAN BRIDGE RESPONSIBILITIES

NOTE: ADOT IS RESPONSIBLE FOR THE STRUCTURAL INTEGRITY OF PCCP, SCREEN AND SOUND WALLS, THE GRAFFITI ABATEMENT ON MAINLINE AND RAMPS.

EXHIBIT A:
 MAINTENANCE LIMITS

67TH AVE TO 59TH AVE (1 OF 2)

ARIZONA DEPARTMENT OF TRANSPORTATION

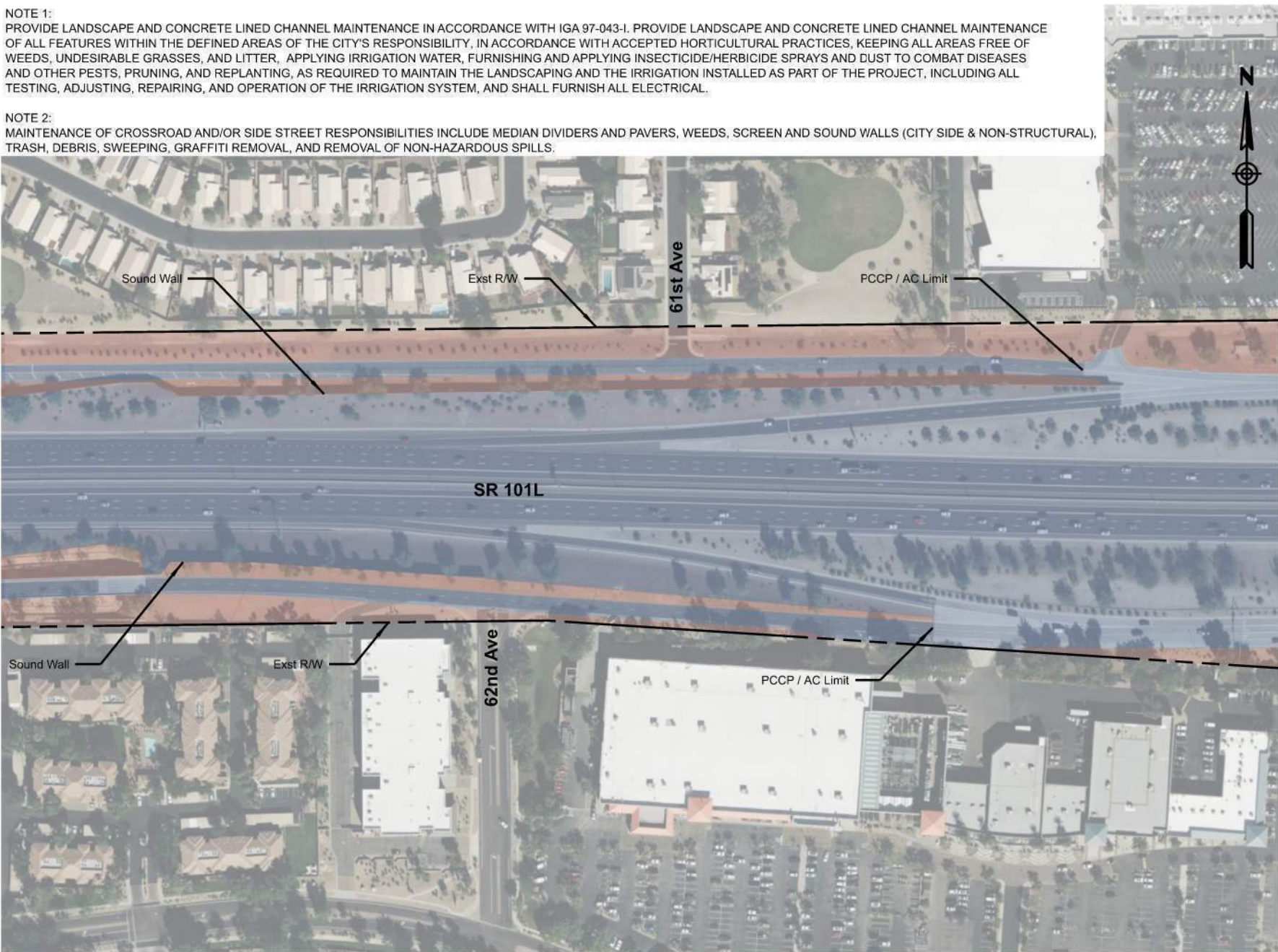
City of Glendale
 Intergovernmental Agreement No. _____

233 East Camelback Road, Suite 100
 Phoenix, AZ 85016
 Stanley Consultants, Inc.

EXHIBIT


NOTE 1:
 PROVIDE LANDSCAPE AND CONCRETE LINED CHANNEL MAINTENANCE IN ACCORDANCE WITH IGA 97-043-I. PROVIDE LANDSCAPE AND CONCRETE LINED CHANNEL MAINTENANCE OF ALL FEATURES WITHIN THE DEFINED AREAS OF THE CITY'S RESPONSIBILITY, IN ACCORDANCE WITH ACCEPTED HORTICULTURAL PRACTICES, KEEPING ALL AREAS FREE OF WEEDS, UNDESIRABLE GRASSES, AND LITTER. APPLYING IRRIGATION WATER, FURNISHING AND APPLYING INSECTICIDE/HERBICIDE SPRAYS AND DUST TO COMBAT DISEASES AND OTHER PESTS, PRUNING, AND REPLANTING, AS REQUIRED TO MAINTAIN THE LANDSCAPING AND THE IRRIGATION INSTALLED AS PART OF THE PROJECT, INCLUDING ALL TESTING, ADJUSTING, REPAIRING, AND OPERATION OF THE IRRIGATION SYSTEM, AND SHALL FURNISH ALL ELECTRICAL.

NOTE 2:
 MAINTENANCE OF CROSSROAD AND/OR SIDE STREET RESPONSIBILITIES INCLUDE MEDIAN DIVIDERS AND PAVERS, WEEDS, SCREEN AND SOUND WALLS (CITY SIDE & NON-STRUCTURAL), TRASH, DEBRIS, SWEEPING, GRAFFITI REMOVAL, AND REMOVAL OF NON-HAZARDOUS SPILLS.



LEGEND:
 MAINTENANCE RESPONSIBILITIES

 ADOT ROW AND MAINTAINED

 ADOT ROW MAINTAINED BY CITY OF GLENDALE

● SEE NOTE 1 FOR LANDSCAPING RESPONSIBILITIES
 ● SEE NOTE 2 FOR SOUND WALL RESPONSIBILITIES

NOTE: ADOT IS RESPONSIBLE FOR THE STRUCTURAL INTEGRITY OF PCCP, SCREEN AND SOUND WALLS, THE GRAFFITI ABATEMENT ON MAINLINE AND RAMPS.

EXHIBIT A:
 MAINTENANCE LIMITS

67TH AVE TO 59TH AVE (2 OF 2)

ARIZONA DEPARTMENT OF TRANSPORTATION

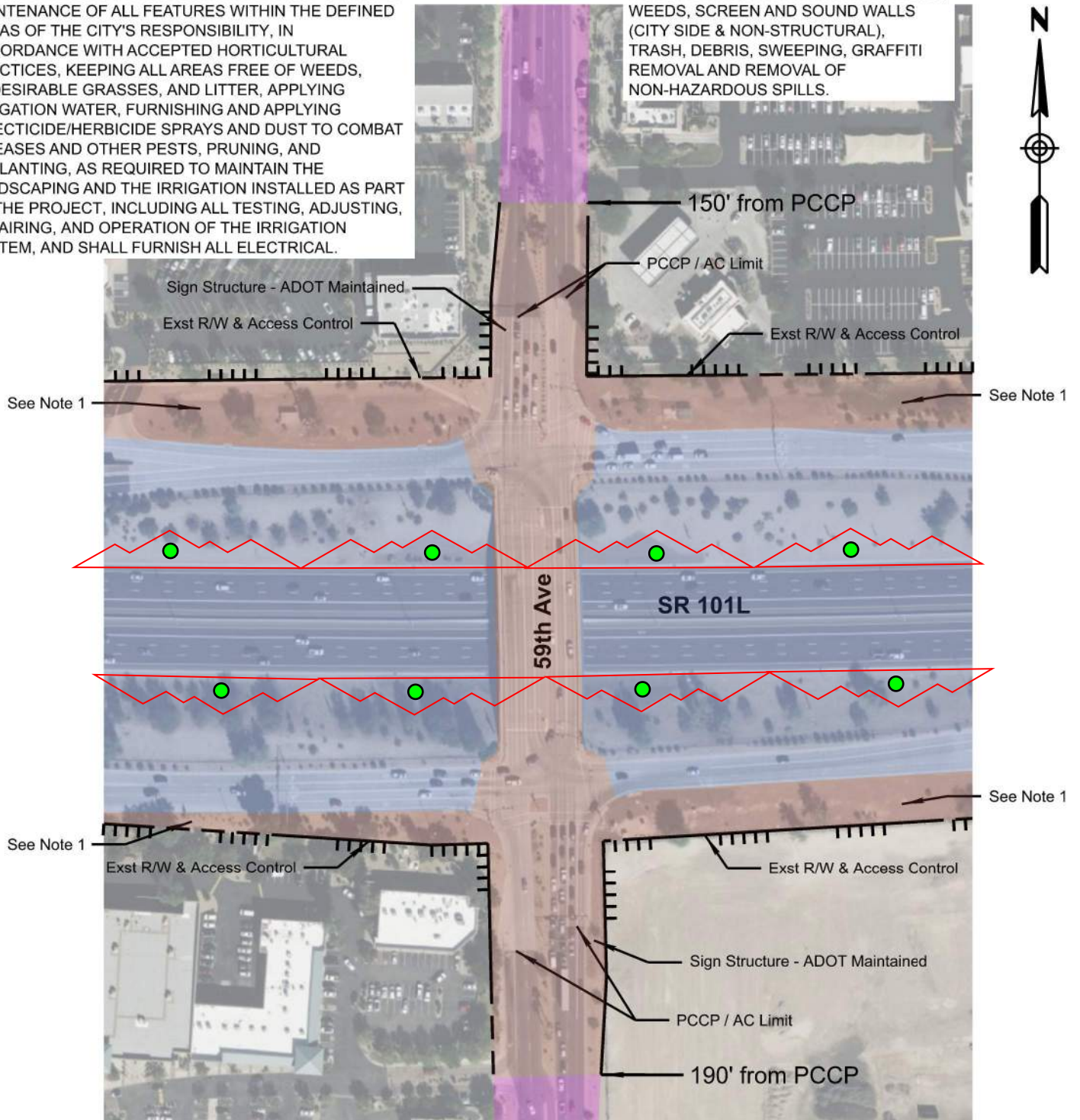
City of Glendale
 Intergovernmental Agreement No. _____

233 East Camelback Road, Suite 100
 Phoenix, AZ 85016
 Stanley Consultants, Inc.

EXHIBIT

NOTE 1:
 PROVIDE LANDSCAPE AND CONCRETE LINED CHANNEL MAINTENANCE IN ACCORDANCE WITH IGA 97-043-I. PROVIDE LANDSCAPE AND CONCRETE CHANNEL MAINTENANCE OF ALL FEATURES WITHIN THE DEFINED AREAS OF THE CITY'S RESPONSIBILITY, IN ACCORDANCE WITH ACCEPTED HORTICULTURAL PRACTICES, KEEPING ALL AREAS FREE OF WEEDS, UNDESIRABLE GRASSES, AND LITTER, APPLYING IRRIGATION WATER, FURNISHING AND APPLYING INSECTICIDE/HERBICIDE SPRAYS AND DUST TO COMBAT DISEASES AND OTHER PESTS, PRUNING, AND REPLANTING, AS REQUIRED TO MAINTAIN THE LANDSCAPING AND THE IRRIGATION INSTALLED AS PART OF THE PROJECT, INCLUDING ALL TESTING, ADJUSTING, REPAIRING, AND OPERATION OF THE IRRIGATION SYSTEM, AND SHALL FURNISH ALL ELECTRICAL.

NOTE 2:
 MAINTENANCE OF CROSSROAD AND/OR SIDE STREET RESPONSIBILITIES INCLUDE MEDIAN DIVIDERS AND PAVERS, WEEDS, SCREEN AND SOUND WALLS (CITY SIDE & NON-STRUCTURAL), TRASH, DEBRIS, SWEEPING, GRAFFITI REMOVAL AND REMOVAL OF NON-HAZARDOUS SPILLS.



LEGEND:
 MAINTENANCE RESPONSIBILITIES

- ADOT ROW AND MAINTAINED
- ADOT ROW MAINTAINED BY CITY OF GLENDALE ●
- CITY OF GLENDALE ROW MAINTAINED BY CITY OF GLENDALE

● THE CITY OF GLENDALE WILL MAINTAIN THE LANDFORM GRAPHICS ON SR 101L. THIS INCLUDES MAINTAINING THE DECOMPOSED GRANITE AND BRICK PAVERS, KEEPING THE SURROUNDING SLOPE AREAS FREE OF WEEDS, UNDESIRABLE GRASSES, AND LITTER/TRASH, AND DAMAGE REPAIR FROM EROSION, ERRANT VEHICLES, OR VANDALISM.

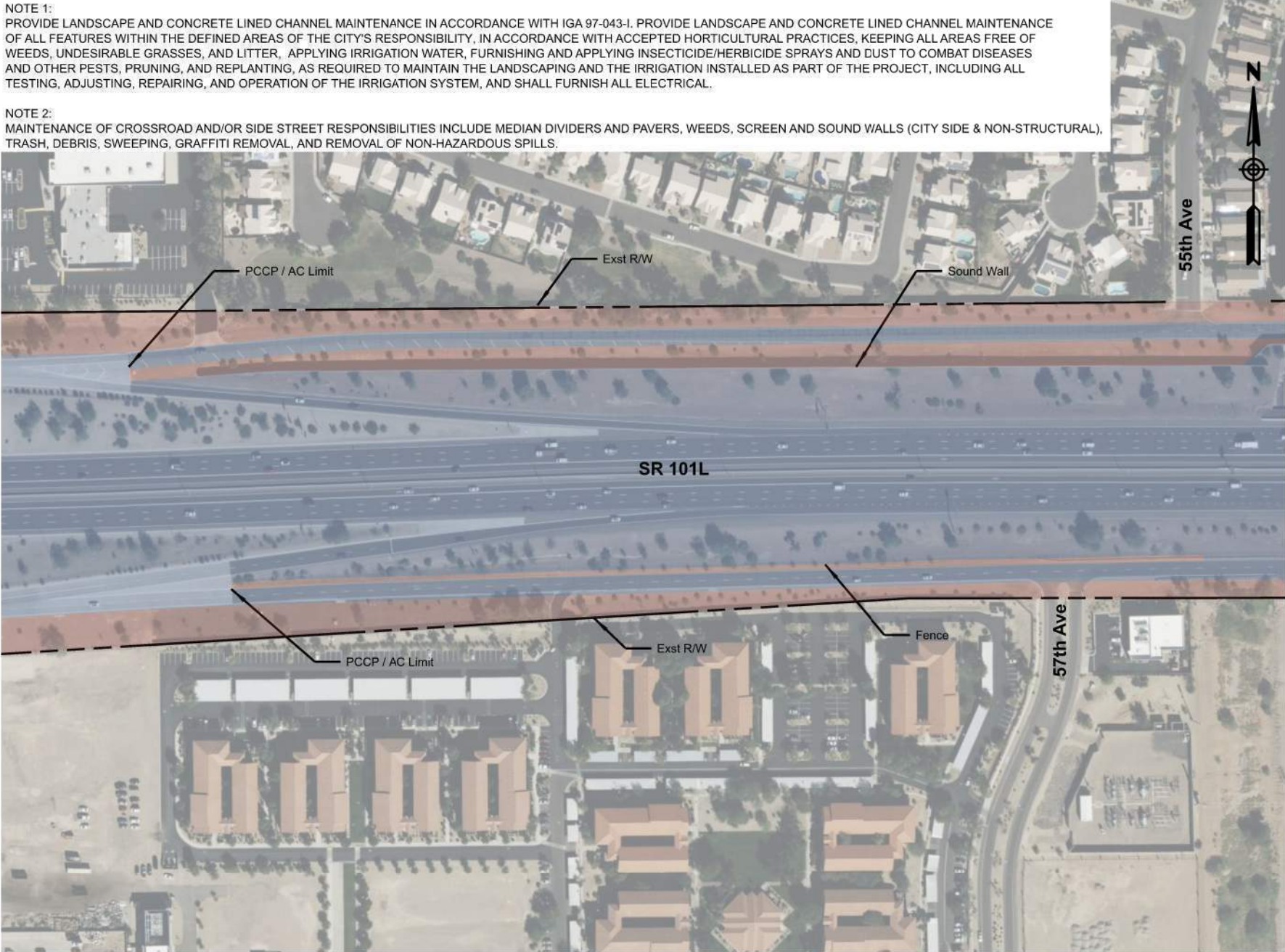
● SEE NOTE 1 FOR LANDSCAPING RESPONSIBILITIES, SEE NOTE 2 FOR CROSSROAD RESPONSIBILITIES

NOTE: ADOT IS RESPONSIBLE FOR THE STRUCTURAL INTEGRITY OF PCCP, TI OP BRIDGE, SCREEN AND SOUND WALLS, THE GRAFFITI ABATEMENT ON MAINLINE AND RAMPS, THE STRUCTURAL AND NONSTRUCTURAL MAINTENANCE OF THE EXPANDED METAL PEDESTRIAN FENCING ON THE BRIDGES OVER THE SR 101L.

EXHIBIT	ARIZONA DEPARTMENT OF TRANSPORTATION	EXHIBIT A: MAINTENANCE LIMITS	
 <small>333 East Camelback Road, Suite 800 Phoenix, AZ 85016 Phone 602 533-2200</small>	City of Glendale Intergovernmental Agreement No. _____	ROUTE SR 101L	LOCATION SR 101L and 59th Avenue


NOTE 1:
 PROVIDE LANDSCAPE AND CONCRETE LINED CHANNEL MAINTENANCE IN ACCORDANCE WITH IGA 97-043-I. PROVIDE LANDSCAPE AND CONCRETE LINED CHANNEL MAINTENANCE OF ALL FEATURES WITHIN THE DEFINED AREAS OF THE CITY'S RESPONSIBILITY, IN ACCORDANCE WITH ACCEPTED HORTICULTURAL PRACTICES, KEEPING ALL AREAS FREE OF WEEDS, UNDESIRABLE GRASSES, AND LITTER. APPLYING IRRIGATION WATER, FURNISHING AND APPLYING INSECTICIDE/HERBICIDE SPRAYS AND DUST TO COMBAT DISEASES AND OTHER PESTS, PRUNING, AND REPLANTING, AS REQUIRED TO MAINTAIN THE LANDSCAPING AND THE IRRIGATION INSTALLED AS PART OF THE PROJECT, INCLUDING ALL TESTING, ADJUSTING, REPAIRING, AND OPERATION OF THE IRRIGATION SYSTEM, AND SHALL FURNISH ALL ELECTRICAL.

NOTE 2:
 MAINTENANCE OF CROSSROAD AND/OR SIDE STREET RESPONSIBILITIES INCLUDE MEDIAN DIVIDERS AND PAVERS, WEEDS, SCREEN AND SOUND WALLS (CITY SIDE & NON-STRUCTURAL), TRASH, DEBRIS, SWEEPING, GRAFFITI REMOVAL, AND REMOVAL OF NON-HAZARDOUS SPILLS.



LEGEND:
 MAINTENANCE RESPONSIBILITIES

 ADOT ROW AND MAINTAINED

 ADOT ROW MAINTAINED BY CITY OF GLENDALE ●

● SEE NOTE 1 FOR LANDSCAPING RESPONSIBILITIES
 ● SEE NOTE 2 FOR SOUND WALL RESPONSIBILITIES

NOTE: ADOT IS RESPONSIBLE FOR THE STRUCTURAL INTEGRITY OF PCCP, SCREEN AND SOUND WALLS, THE GRAFFITI ABATEMENT ON MAINLINE AND RAMPS.

EXHIBIT A:
 MAINTENANCE LIMITS

59TH AVE TO 51ST AVE (1 OF 2)

ARIZONA DEPARTMENT OF TRANSPORTATION

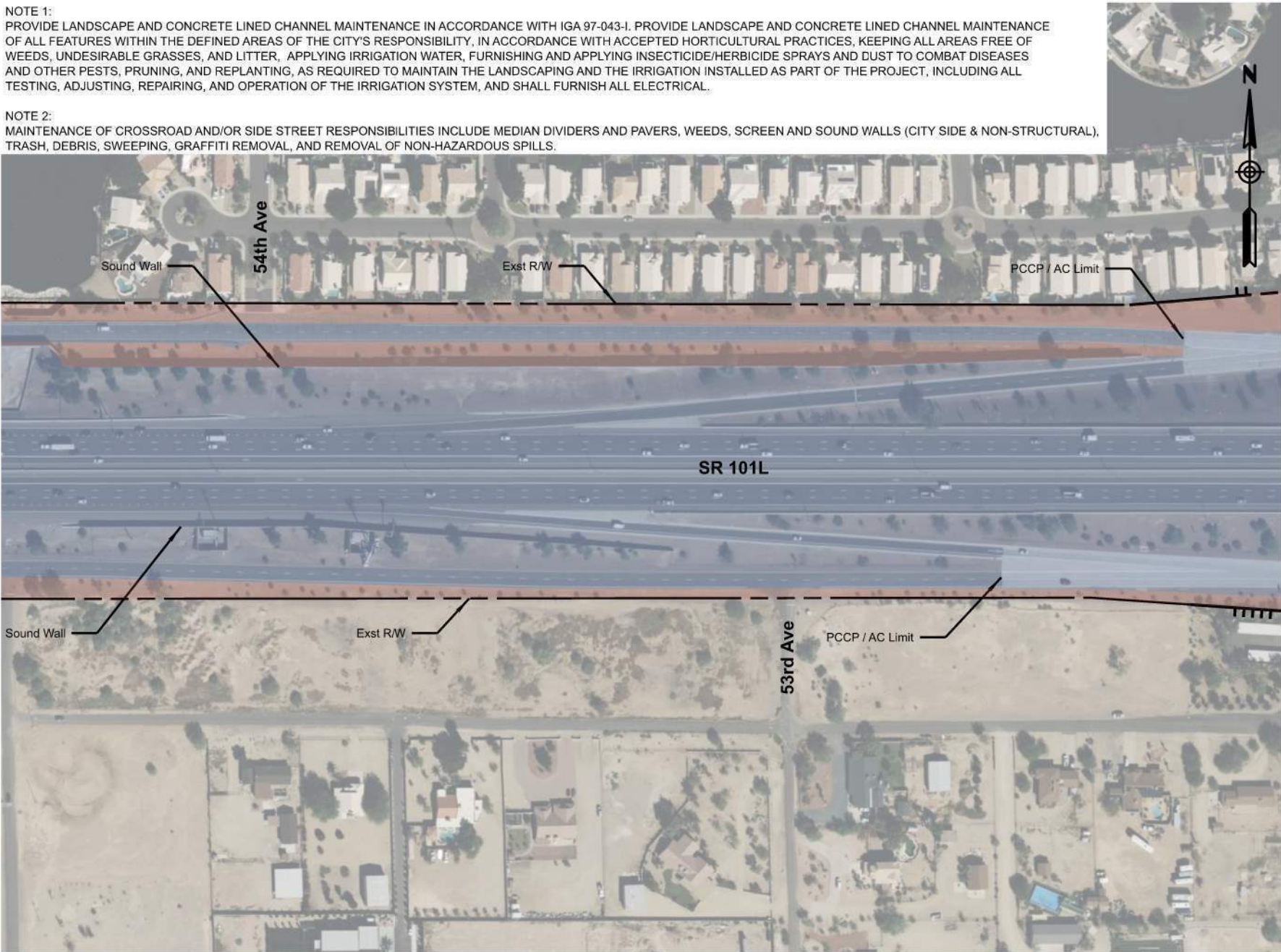
City of Glendale
 Intergovernmental Agreement No. _____

233 East Camelback Road, Suite 100
 Phoenix, AZ 85016
 Stanley Consultants, Inc.

EXHIBIT

NOTE 1:
 PROVIDE LANDSCAPE AND CONCRETE LINED CHANNEL MAINTENANCE IN ACCORDANCE WITH IGA 97-043-I. PROVIDE LANDSCAPE AND CONCRETE LINED CHANNEL MAINTENANCE OF ALL FEATURES WITHIN THE DEFINED AREAS OF THE CITY'S RESPONSIBILITY, IN ACCORDANCE WITH ACCEPTED HORTICULTURAL PRACTICES, KEEPING ALL AREAS FREE OF WEEDS, UNDESIRABLE GRASSES, AND LITTER. APPLYING IRRIGATION WATER, FURNISHING AND APPLYING INSECTICIDE/HERBICIDE SPRAYS AND DUST TO COMBAT DISEASES AND OTHER PESTS, PRUNING, AND REPLANTING, AS REQUIRED TO MAINTAIN THE LANDSCAPING AND THE IRRIGATION INSTALLED AS PART OF THE PROJECT, INCLUDING ALL TESTING, ADJUSTING, REPAIRING, AND OPERATION OF THE IRRIGATION SYSTEM, AND SHALL FURNISH ALL ELECTRICAL.

NOTE 2:
 MAINTENANCE OF CROSSROAD AND/OR SIDE STREET RESPONSIBILITIES INCLUDE MEDIAN DIVIDERS AND PAVERS, WEEDS, SCREEN AND SOUND WALLS (CITY SIDE & NON-STRUCTURAL), TRASH, DEBRIS, SWEEPING, GRAFFITI REMOVAL, AND REMOVAL OF NON-HAZARDOUS SPILLS.



LEGEND:
 MAINTENANCE RESPONSIBILITIES

ADOT ROW AND MAINTAINED

ADOT ROW MAINTAINED BY CITY OF GLENDALE

● SEE NOTE 1 FOR LANDSCAPING RESPONSIBILITIES
 ● SEE NOTE 2 FOR SOUND WALL RESPONSIBILITIES

NOTE: ADOT IS RESPONSIBLE FOR THE STRUCTURAL INTEGRITY OF PCCP, SCREEN AND SOUND WALLS, THE GRAFFITI ABATEMENT ON MAINLINE AND RAMPS.

EXHIBIT A:
 MAINTENANCE LIMITS

59TH AVE TO 51ST AVE (2 OF 2)

ARIZONA DEPARTMENT OF TRANSPORTATION

City of Glendale
 Intergovernmental Agreement No. _____

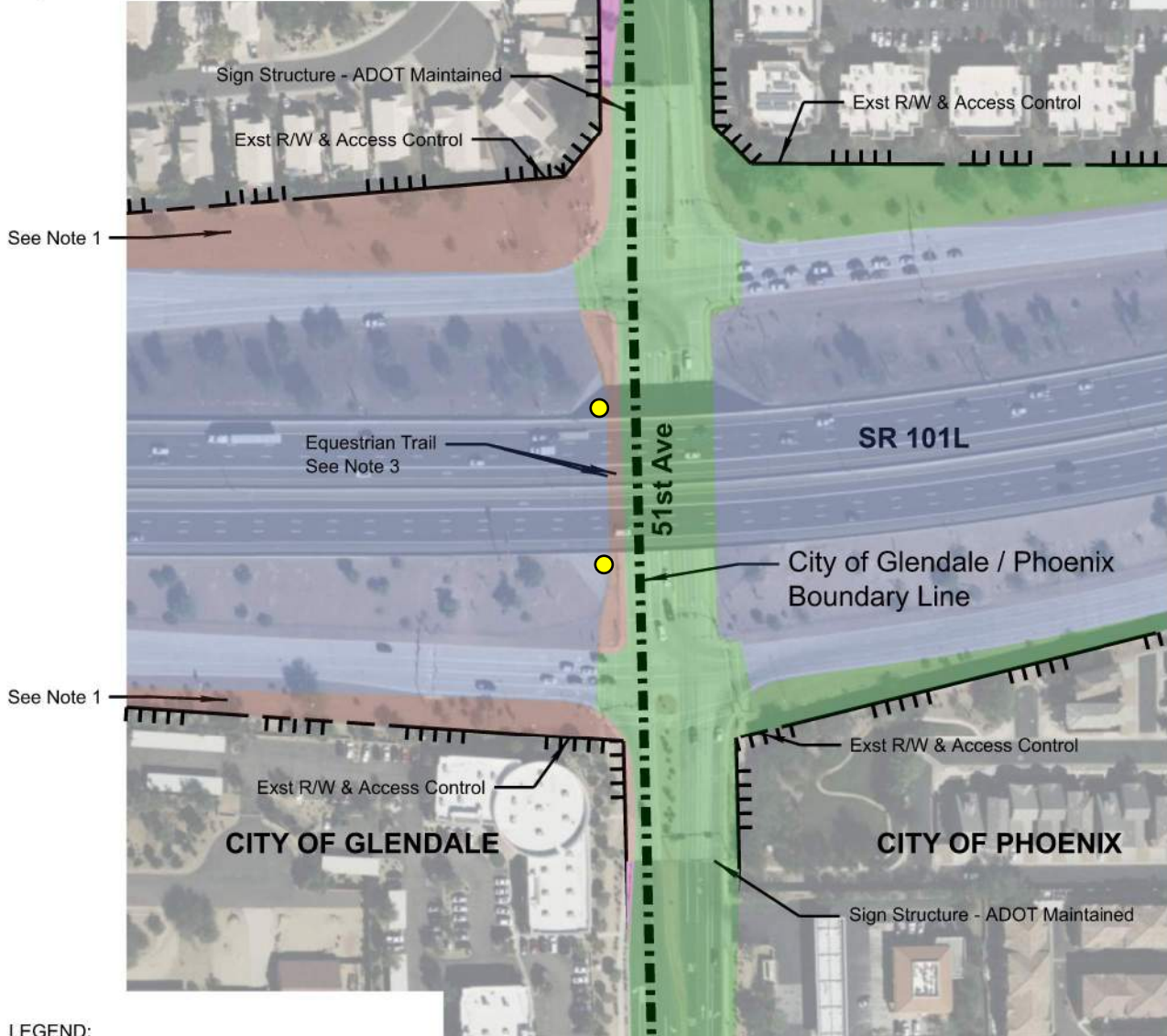
233 East Camelback Road, Suite 100
 Phoenix, AZ 85016
 Stanley Consultants, Inc.

EXHIBIT

NOTE 1:
 PROVIDE LANDSCAPE AND CONCRETE LINED CHANNEL MAINTENANCE IN ACCORDANCE WITH IGA 97-043-I. PROVIDE LANDSCAPE AND CONCRETE LINED CHANNEL MAINTENANCE OF ALL FEATURES WITHIN THE DEFINED AREAS OF THE CITY'S RESPONSIBILITY, IN ACCORDANCE WITH ACCEPTED HORTICULTURAL PRACTICES, KEEPING ALL AREAS FREE OF WEEDS, UNDESIRABLE GRASSES, AND LITTER, APPLYING IRRIGATION WATER, FURNISHING AND APPLYING INSECTICIDE/HERBICIDE SPRAYS AND DUST TO COMBAT DISEASES AND OTHER PESTS, PRUNING, AND REPLANTING, AS REQUIRED TO MAINTAIN THE LANDSCAPING AND THE IRRIGATION INSTALLED AS PART OF THE PROJECT, INCLUDING ALL TESTING, ADJUSTING, REPAIRING, AND OPERATION OF THE IRRIGATION SYSTEM, AND SHALL FURNISH ALL ELECTRICAL.

NOTE 2:
 MAINTENANCE OF CROSSROAD AND/OR SIDE STREET RESPONSIBILITIES INCLUDE WEEDS, SCREEN AND SOUND WALLS (CITY SIDE & NON-STRUCTURAL), TRASH, DEBRIS, GRAFFITI REMOVAL AND REMOVAL OF NON-HAZARDOUS SPILLS.

NOTE 3:
 PROVIDE EQUESTRIAN TRAIL AND FENCE MAINTENANCE IN ACCORDANCE WITH IGA 97-043-I. EQUESTRIAN TRAIL AND FENCE MAINTENANCE CONSISTS OF MAINTAINING THESE ELEMENTS IN GOOD REPAIR, FREE OF WEEDS, UNDESIRABLE GRASSES, AND LITTER.

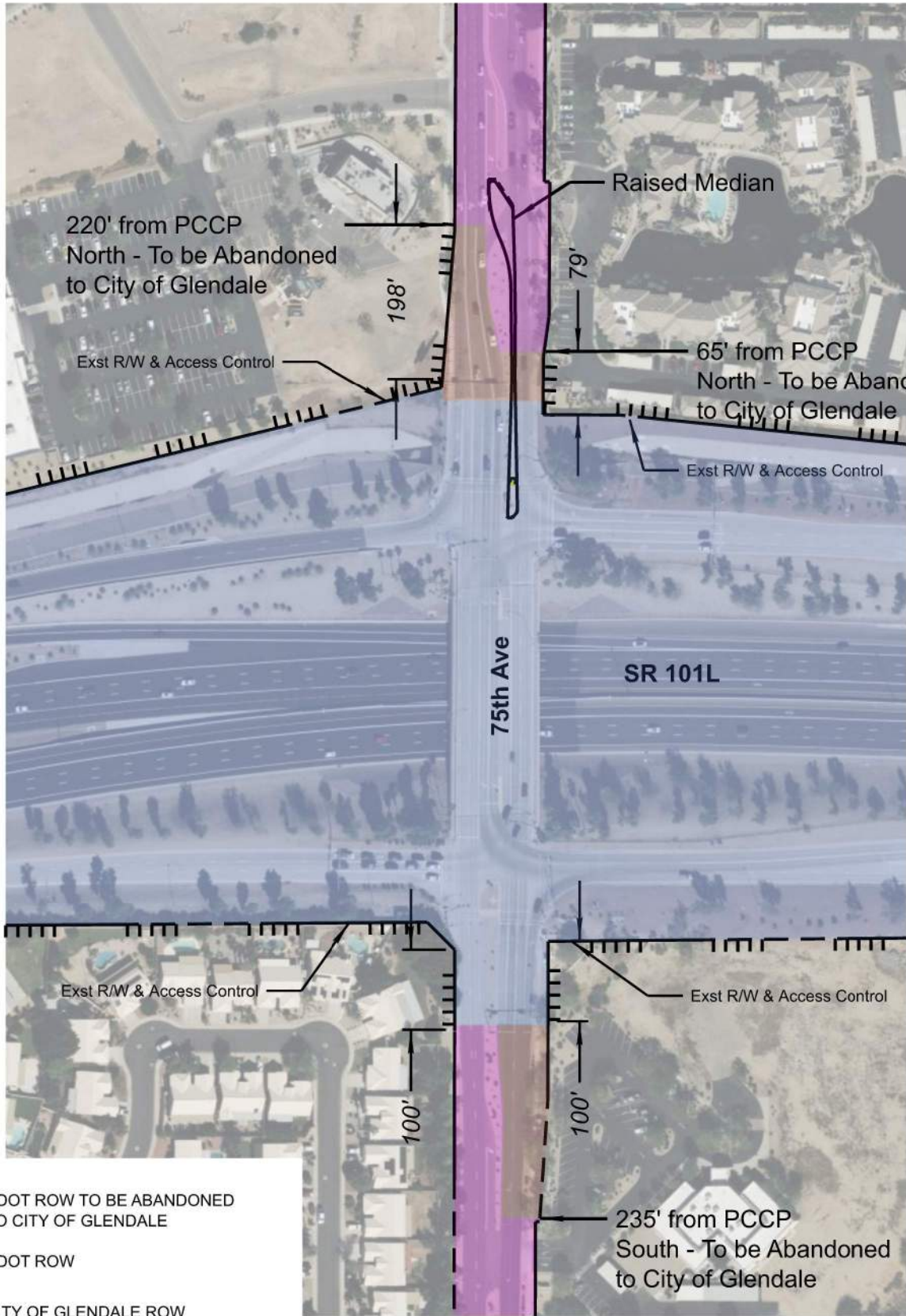


- LEGEND:**
 MAINTENANCE RESPONSIBILITIES
- ADOT ROW AND MAINTAINED
 - ADOT ROW MAINTAINED BY CITY OF GLENDALE ●
 - CITY OF GLENDALE ROW MAINTAINED BY CITY OF GLENDALE
 - MAINTAINED BY CITY OF PHOENIX ■

- THE CITY OF GLENDALE WILL MAINTAIN THE COILED SNAKE AND SAGUARO ICONS ON THE WEST SIDE OF 51ST AVE. THIS INCLUDES MAINTAINING PAINT CONDITION AND STRUCTURAL INTEGRITY OF THE ICONS.
- SEE NOTE 1 FOR LANDSCAPING RESPONSIBILITIES, SEE NOTE 2 FOR CROSSROAD RESPONSIBILITIES

NOTE: ADOT IS RESPONSIBLE FOR THE STRUCTURAL INTEGRITY OF PCCP, TI OP BRIDGE, SCREEN AND SOUND WALLS, THE GRAFFITI ABATEMENT ON MAINLINE AND RAMPS, THE STRUCTURAL AND NONSTRUCTURAL MAINTENANCE OF THE EXPANDED METAL PEDESTRIAN FENCING ON THE BRIDGES OVER THE SR 101L.

EXHIBIT	ARIZONA DEPARTMENT OF TRANSPORTATION	EXHIBIT A: MAINTENANCE LIMITS	
 <small>333 East Camelback Road, Suite 800 Phoenix, AZ 85016 Phone 602 528-2200</small>	City of Glendale Intergovernmental Agreement No. _____	ROUTE SR 101L	LOCATION SR 101L and 51st Avenue



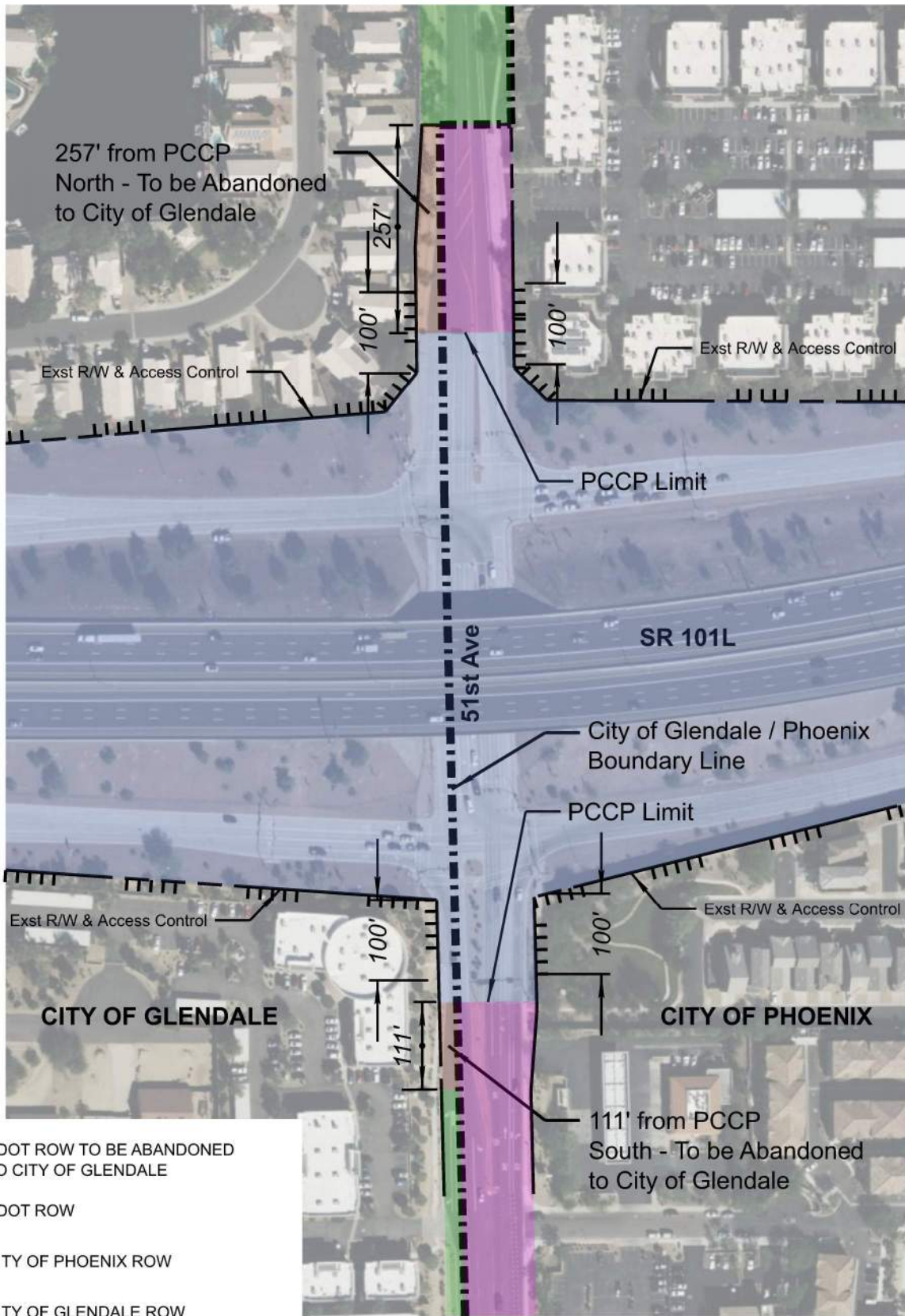
LEGEND

- ADOT ROW TO BE ABANDONED TO CITY OF GLENDALE
- ADOT ROW
- CITY OF GLENDALE ROW

||||| ADOT ACCESS CONTROL

NOTE: ADOT TO MAINTAIN EXISTING ACCESS CONTROL

EXHIBIT	ARIZONA DEPARTMENT OF TRANSPORTATION	EXHIBIT B: ROW ABANDONMENT & ACCESS CONTROL	
 <small>333 East Camelback Road, Suite 800 Phoenix, AZ 85016 Phone 602 552-2800</small>	City of Glendale Intergovernmental Agreement No. _____	ROUTE SR 101L	LOCATION SR 101L and 75th Avenue

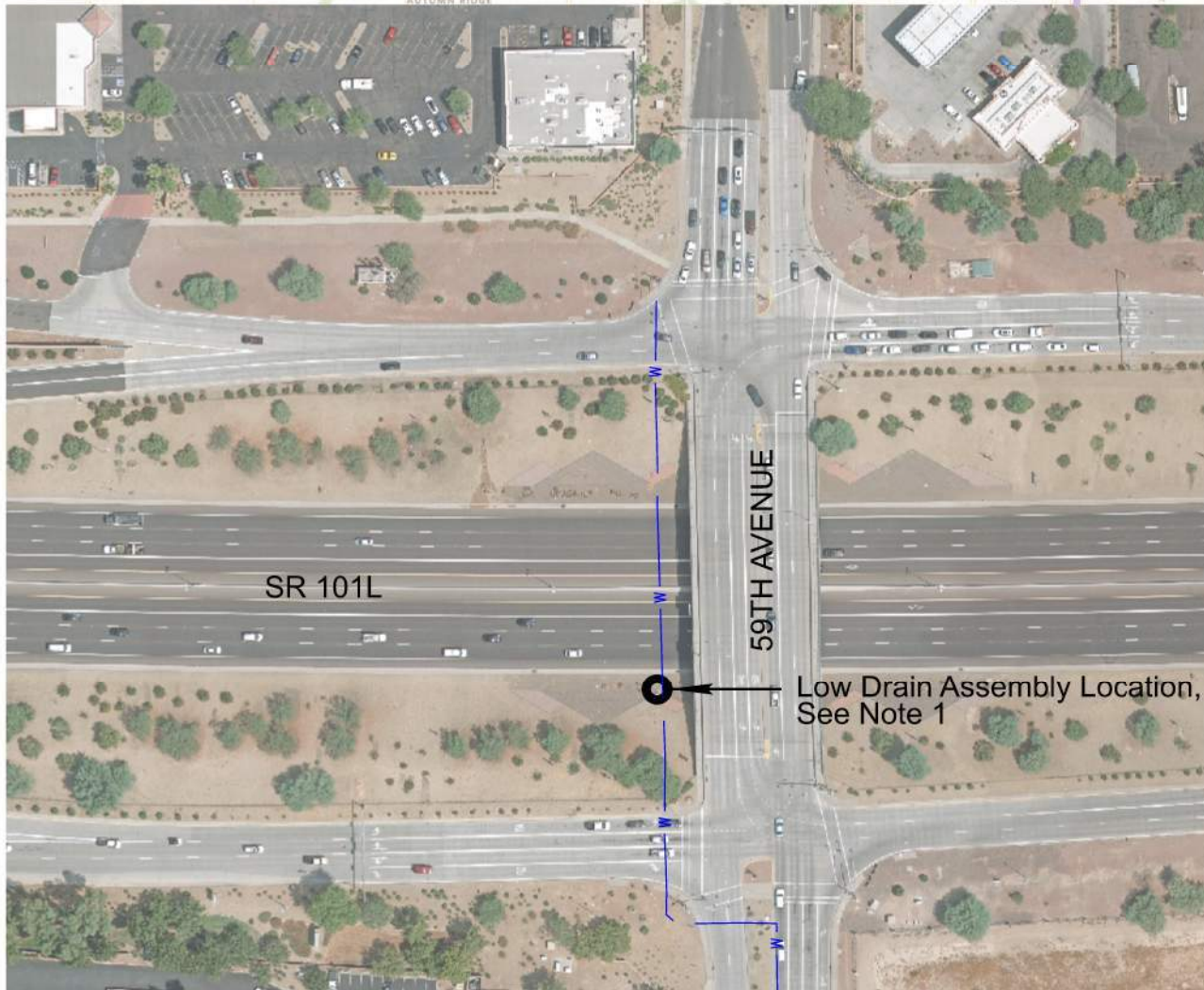
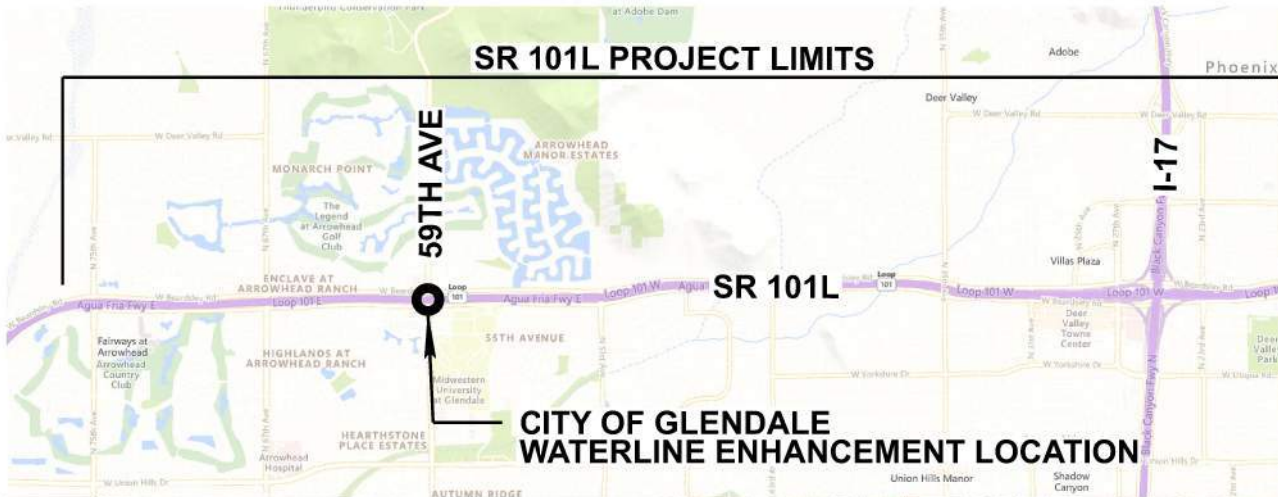


LEGEND

- ADOT ROW TO BE ABANDONED TO CITY OF GLENDALE
- ADOT ROW
- CITY OF PHOENIX ROW
- CITY OF GLENDALE ROW
- ADOT ACCESS CONTROL

NOTE: ADOT TO MAINTAIN EXISTING ACCESS CONTROL

EXHIBIT	ARIZONA DEPARTMENT OF TRANSPORTATION	EXHIBIT B: ROW ABANDONMENT & ACCESS CONTROL	
 <small>333 East Camelback Road, Suite 800 Phoenix, AZ 85016 Phone 602 552-2800</small>	City of Glendale Intergovernmental Agreement No. _____	ROUTE SR 101L	LOCATION SR 101L and 51st Avenue



NOTES:

1. REMOVE EXISTING FLUSH HYDRANT, VALVE BOX ASSEMBLY, AND 8" DUCTILE IRON PIPE (DIP) CONNECTED TO THE CITY'S EXISTING 36" DIAMETER PCCP WATERLINE AND INSTALL A LOW DRAIN ASSEMBLY INCLUDING A CONCRETE PUMP OUT MANHOLE WITH FRAME AND COVER, 8" DIP, AND GATE VALVE WITH VALVE EXTENSION, FRAME, AND COVER.

EXHIBIT	ARIZONA DEPARTMENT OF TRANSPORTATION	EXHIBIT C: CITY OF GLENDALE WATERLINE ENHANCEMENTS	
 323 East Camelback Road, Suite 100 Phoenix, AZ 85016 Phone 602 533-2200	City of Glendale Intergovernmental Agreement No. _____	ROUTE SR 101L	LOCATION SR 101L AND 59TH AVENUE

EXHIBIT D
SR101 (Agua Fria): 75th Avenue to I-17
Cost Estimate

IGA: 22-0008481-I
Amendment No. One: 25-0011095-I

F0316 01C

The City costs are estimated as follows:

	Original	Amend #1	AMENDED TOTAL
Executed Date:	December 20, 2023	<i>Pending</i>	
<u>Construction:</u>			
City's Costs for Waterline Work @ 100%*	\$108,307		\$108,307
City's Costs for Aesthetic Enhancements @ 100%		\$135,000	\$135,000
City's Estimated TOTAL Cost	\$108,307	\$135,000	\$243,307

* The estimated cost of the Waterline Work is \$132,632. The cost to remove and relocate the existing flush hydrant and DIP will be deducted from the Waterline Work at an amount not to exceed \$24,325. The City's costs of the Waterline Work, estimated at \$108,307, has been invoiced and paid. The City is responsible for actual Waterline Work costs minus \$24,325.

CITY OF GLENDALE IGA COST EXHIBIT D

ITEM NO.	ITEM DESCRIPTION	UNIT	QUANTITY	UNIT PRICE	AMOUNT
9240054	MISCELLANEOUS WORK (LOW DRAIN ASSEMBLY)(CITY OF GLENDALE)	LSUM	1	82,580.00	82,580.00
				ITEM TOTAL:	82,580.00
9010001	MOBILIZATION (~10%)	L.SUM	1	8,258.00	8,258.00
9240170	CONTRACTOR QUALITY CONTROL (~1.5%)	L.SUM	1	1,238.70	1,238.70
9250001	CONSTRUCTION SURVEYING AND LAYOUT (~2%)	L.SUM	1	1,651.60	1,651.60
				CONSTRUCTION TOTAL:	93,728.30
	CONSTRUCTION ENGINEERING (15%)		15%		14,059.25
	CONSTRUCTION CONTINGENCIES (5%)		5%		4,686.42
	POST DESIGN (1%)		1%		937.28
	FINAL DESIGN PLAN REVIEW AND COORDINATION WITH COG AND CONSULTANT	HOURS	40	160.00	6,400.00
				PROJECT SUBTOTAL:	119,811.25
	ICAP (10.7% FY22)	10.7%			12,819.80
				PROJECT TOTAL:	132,631.05
	FLUSHING HYDRANT RELOCATION (ADOT CREDIT)				(24,325.00)
				TOTAL CITY OF GLENDALE COST	108,306.05

LOW DRAIN MANHOLE ASSEMBLY AT EB SR 101L AND 59TH AVE

CITY OF GLENDALE IGA COST EXHIBIT D

ITEM NO.	ITEM DESCRIPTION	UNIT	QUANTITY	UNIT PRICE	AMOUNT
2020041	REMOVAL OF PIPE	L.F.	8	150.00	1,200.00
2020053	REMOVE (FIRE HYDRANT)	EACH	1	1,500.00	1,500.00
2030201	EXCAVATION	CU.YD.	10	160.00	1,600.00
2030506	STRUCTURE BACKFILL	CU.YD.	10	170.00	1,700.00
8080658	FIRE HYDRANT (FLUSHING)	EACH	1	4,000.00	4,000.00
8080258	VALVE (8")	EACH	1	4,000.00	4,000.00
8082108	PIPE, DUCTILE IRON, 8"	L.F.	8	250.00	2,000.00
				CONSTRUCTION SUBTOTAL:	16,000.00
9010001	MOBILIZATION (10%)	L.SUM	1	1,600.00	1,600.00
9240170	CONTRACTOR QUALITY CONTROL (1.5%)	L.SUM	1	240.00	240.00
9250001	CONSTRUCTION SURVEYING AND LAYOUT (2%)	L.SUM	1	320.00	320.00
				CONSTRUCTION SUBTOTAL:	2,160.00
				CONSTRUCTION TOTAL:	18,160.00
	TRAFFIC CONTROL (UNDER ADOT GP LANE PROJECT)		-		-
	CONSTRUCTION ENGINEERING (15%)		15%		2,724.00
	CONSTRUCTION CONTINGENCIES (5%)		5%		908.00
	POST DESIGN (1%)		1%		182.00
				PROJECT SUBTOTAL:	21,974.00
	ICAP (10.7% FY22)	10.7%			2,351.00
				PROJECT TOTAL:	24,325.00

FLUSHING HYDRANT RELOCATION (CREDIT)

CITY OF GLENDALE IGA COST EXHIBIT D

ITEM DESCRIPTION	UNIT	QUANTITY	UNIT PRICE	AMOUNT
POST APPLIED ICONS - 2 COILED SNAKES AND 2 SMALL SAGUAROS	LSUM	1	52,983	52,983
LANDFORM GRAPHIC	EACH	1	48,000	48,000
		CONSTRUCTION TOTAL:		100,983
CONSTRUCTION ENGINEERING		15%		15,147
CONSTRUCTION CONTINGENCIES		5%		5,049
POST DESIGN (6%)		6%		6,059
		PROJECT SUBTOTAL:		127,239
ICAP (6.1% FY26)	6.1%			7,762
		PROJECT TOTAL:		135,000