

RESOLUTION NO. R26-14

A RESOLUTION OF THE COUNCIL OF THE CITY OF GLENDALE, MARICOPA COUNTY, ARIZONA, AUTHORIZING AND DIRECTING THE ENTERING INTO OF AMENDMENT NUMBER ONE TO THE INTERGOVERNMENTAL AGREEMENT WITH THE STATE OF ARIZONA FOR THE ADDITION OF LANDSCAPING TO THE LOOP 101 – 75TH AVENUE TO I-17 PROJECT.

WHEREAS, the State of Arizona through the Arizona Department of Transportation (ADOT) is the lead agency for the Loop 101 – 75th Avenue to I-17 project; and

WHEREAS, the City of Glendale requested additional landscaping features be added to the project; and

WHEREAS, the additional landscaping features will be added along the AZ Loop 101 corridor; and

WHEREAS, the City of Glendale has agreed to pay for the additional landscaping features; and

WHEREAS, the City of Glendale and ADOT hereby amend the existing agreement to revise the project description to include City aesthetics work and increase design and construction costs; Exhibit A is revised and replaces accordingly.

BE IT RESOLVED BY THE COUNCIL OF THE CITY OF GLENDALE as follows:

SECTION 1. That it is deemed in the best interest of the City of Glendale and the citizens thereof that amendment one to the intergovernmental agreement with the State of Arizona for the funding and maintenance of additional landscaping features to be placed on the Loop 101 corridor, be entered into, which agreement is now on file in the office of the City Clerk of the City of Glendale.

SECTION 2. That the City Manager or designee and the City Clerk be authorized and directed to execute and deliver any and all documents necessary to effectuate said Agreement on behalf of the City of Glendale.

(Signatures on following page)

PASSED, ADOPTED AND APPROVED by the Mayor and Council of the City of Glendale, Maricopa County, Arizona, this 24th day of February, 2026.

Mayor Jerry P. Weiers

ATTEST:

Julie K. Bower, City Clerk (SEAL)

APPROVED AS TO FORM:

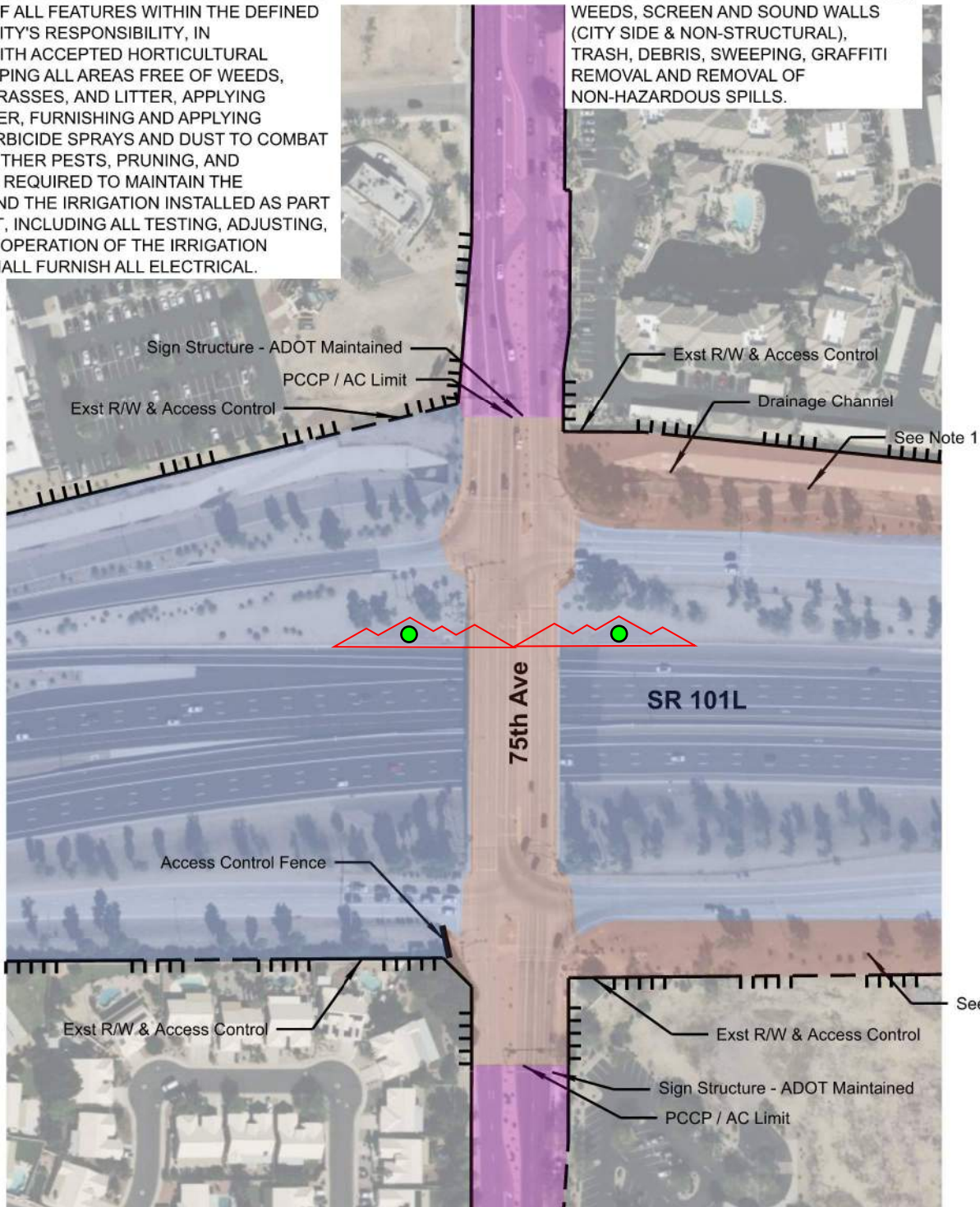
Michael D. Bailey, City Attorney

REVIEWED BY:

Patrick S. Banger, City Manager

NOTE 1:
 PROVIDE LANDSCAPE AND CONCRETE LINED CHANNEL MAINTENANCE IN ACCORDANCE WITH IGA 97-043-I. PROVIDE LANDSCAPE AND CONCRETE LINED CHANNEL MAINTENANCE OF ALL FEATURES WITHIN THE DEFINED AREAS OF THE CITY'S RESPONSIBILITY, IN ACCORDANCE WITH ACCEPTED HORTICULTURAL PRACTICES, KEEPING ALL AREAS FREE OF WEEDS, UNDESIRABLE GRASSES, AND LITTER, APPLYING IRRIGATION WATER, FURNISHING AND APPLYING INSECTICIDE/HERBICIDE SPRAYS AND DUST TO COMBAT DISEASES AND OTHER PESTS, PRUNING, AND REPLANTING, AS REQUIRED TO MAINTAIN THE LANDSCAPING AND THE IRRIGATION INSTALLED AS PART OF THE PROJECT, INCLUDING ALL TESTING, ADJUSTING, REPAIRING, AND OPERATION OF THE IRRIGATION SYSTEM, AND SHALL FURNISH ALL ELECTRICAL.

NOTE 2:
 MAINTENANCE OF CROSSROAD AND/OR SIDE STREET RESPONSIBILITIES INCLUDE MEDIAN DIVIDERS AND PAVERS, WEEDS, SCREEN AND SOUND WALLS (CITY SIDE & NON-STRUCTURAL), TRASH, DEBRIS, SWEEPING, GRAFFITI REMOVAL AND REMOVAL OF NON-HAZARDOUS SPILLS.



LEGEND:
 MAINTENANCE RESPONSIBILITIES

- ADOT ROW AND MAINTAINED
- ADOT ROW MAINTAINED BY CITY OF GLENDALE ●
- CITY OF GLENDALE ROW MAINTAINED BY CITY OF GLENDALE

● THE CITY OF GLENDALE WILL MAINTAIN THE LANDFORM GRAPHICS ON SR 101L. THIS INCLUDES MAINTAINING THE DECOMPOSED GRANITE AND BRICK PAVERS, KEEPING THE SURROUNDING SLOPE AREAS FREE OF WEEDS, UNDESIRABLE GRASSES, AND LITTER/TRASH, AND DAMAGE REPAIR FROM EROSION, ERRANT VEHICLES, OR VANDALISM.

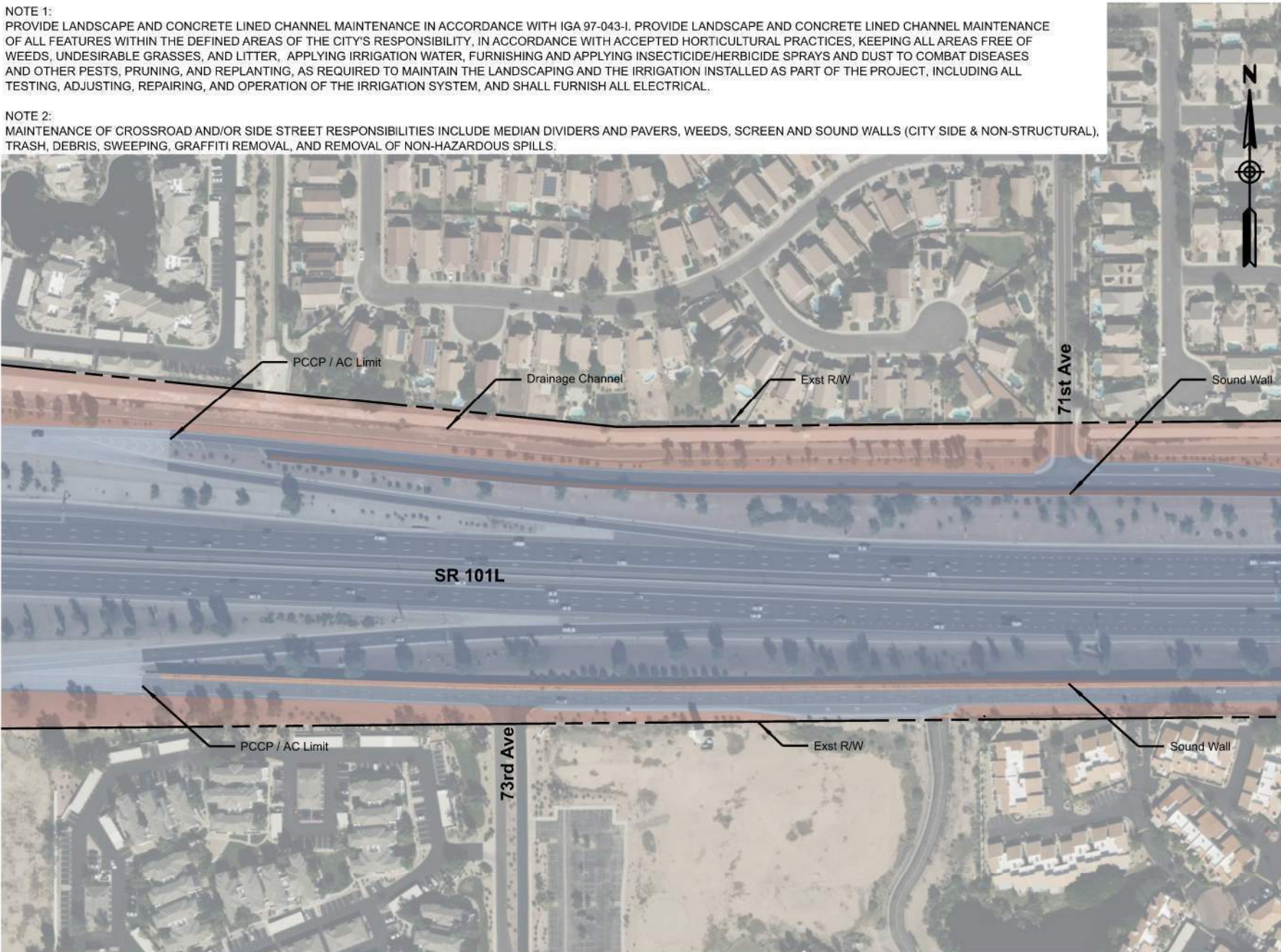
● SEE NOTE 1 FOR LANDSCAPING RESPONSIBILITIES,
 ● SEE NOTE 2 FOR CROSSROAD RESPONSIBILITIES

NOTE: ADOT IS RESPONSIBLE FOR THE STRUCTURAL INTEGRITY OF PCCP, TI OP BRIDGE, SCREEN AND SOUND WALLS, THE GRAFFITI ABATEMENT ON MAINLINE AND RAMPS, THE STRUCTURAL AND NONSTRUCTURAL MAINTENANCE OF THE EXPANDED METAL PEDESTRIAN FENCING ON THE BRIDGES OVER THE SR 101L.

| | | | |
|---|---|----------------------------------|-------------------------------------|
| EXHIBIT | ARIZONA DEPARTMENT OF TRANSPORTATION | EXHIBIT A: MAINTENANCE LIMITS | |
| <small>333 East Camelback Road, Suite 800 Phoenix, Arizona 85016 Phone 602 333-2000</small> | City of Glendale Intergovernmental Agreement No. _____ | ROUTE SR 101L | LOCATION SR 101L and 75th Avenue |

NOTE 1:
 PROVIDE LANDSCAPE AND CONCRETE LINED CHANNEL MAINTENANCE IN ACCORDANCE WITH IGA 97-043-I. PROVIDE LANDSCAPE AND CONCRETE LINED CHANNEL MAINTENANCE OF ALL FEATURES WITHIN THE DEFINED AREAS OF THE CITY'S RESPONSIBILITY, IN ACCORDANCE WITH ACCEPTED HORTICULTURAL PRACTICES, KEEPING ALL AREAS FREE OF WEEDS, UNDESIRABLE GRASSES, AND LITTER. APPLYING IRRIGATION WATER, FURNISHING AND APPLYING INSECTICIDE/HERBICIDE SPRAYS AND DUST TO COMBAT DISEASES AND OTHER PESTS, PRUNING, AND REPLANTING, AS REQUIRED TO MAINTAIN THE LANDSCAPING AND THE IRRIGATION INSTALLED AS PART OF THE PROJECT, INCLUDING ALL TESTING, ADJUSTING, REPAIRING, AND OPERATION OF THE IRRIGATION SYSTEM, AND SHALL FURNISH ALL ELECTRICAL.

NOTE 2:
 MAINTENANCE OF CROSSROAD AND/OR SIDE STREET RESPONSIBILITIES INCLUDE MEDIAN DIVIDERS AND PAVERS, WEEDS, SCREEN AND SOUND WALLS (CITY SIDE & NON-STRUCTURAL), TRASH, DEBRIS, SWEEPING, GRAFFITI REMOVAL, AND REMOVAL OF NON-HAZARDOUS SPILLS.



LEGEND:
 MAINTENANCE RESPONSIBILITIES

ADOT ROW AND MAINTAINED

ADOT ROW MAINTAINED BY CITY OF GLENDALE ●

● SEE NOTE 1 FOR LANDSCAPING RESPONSIBILITIES
 ● SEE NOTE 2 FOR SOUND WALL RESPONSIBILITIES

NOTE: ADOT IS RESPONSIBLE FOR THE STRUCTURAL INTEGRITY OF PCCP, SCREEN AND SOUND WALLS, THE GRAFFITI ABATEMENT ON MAINLINE AND RAMPS.

EXHIBIT A:
 MAINTENANCE LIMITS

75TH AVE TO 67TH AVE (1 OF 2)

ARIZONA DEPARTMENT OF TRANSPORTATION

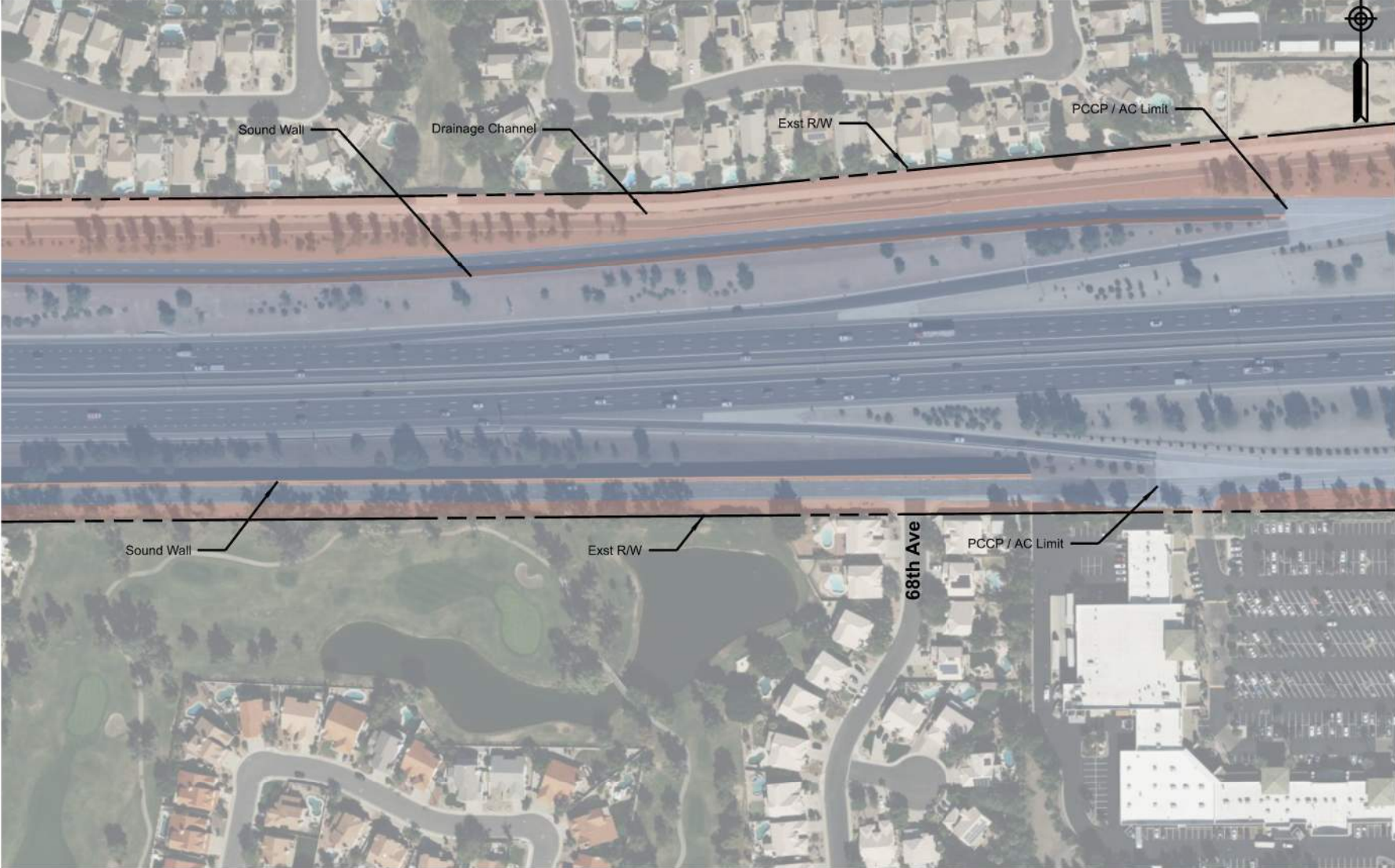
City of Glendale
 Intergovernmental Agreement No. _____

233 East Camelback Road, Suite 100
 Phoenix, AZ 85016
 Phone: 602.235.2329
 Stanley Consultants, Inc.

EXHIBIT

NOTE 1:
 PROVIDE LANDSCAPE AND CONCRETE LINED CHANNEL MAINTENANCE IN ACCORDANCE WITH IGA 97-043-I. PROVIDE LANDSCAPE AND CONCRETE LINED CHANNEL MAINTENANCE OF ALL FEATURES WITHIN THE DEFINED AREAS OF THE CITY'S RESPONSIBILITY, IN ACCORDANCE WITH ACCEPTED HORTICULTURAL PRACTICES, KEEPING ALL AREAS FREE OF WEEDS, UNDESIRABLE GRASSES, AND LITTER. APPLYING IRRIGATION WATER, FURNISHING AND APPLYING INSECTICIDE/HERBICIDE SPRAYS AND DUST TO COMBAT DISEASES AND OTHER PESTS, PRUNING, AND REPLANTING, AS REQUIRED TO MAINTAIN THE LANDSCAPING AND THE IRRIGATION INSTALLED AS PART OF THE PROJECT, INCLUDING ALL TESTING, ADJUSTING, REPAIRING, AND OPERATION OF THE IRRIGATION SYSTEM, AND SHALL FURNISH ALL ELECTRICAL.

NOTE 2:
 MAINTENANCE OF CROSSROAD AND/OR SIDE STREET RESPONSIBILITIES INCLUDE MEDIAN DIVIDERS AND PAVERS, WEEDS, SCREEN AND SOUND WALLS (CITY SIDE & NON-STRUCTURAL), TRASH, DEBRIS, SWEEPING, GRAFFITI REMOVAL, AND REMOVAL OF NON-HAZARDOUS SPILLS.



LEGEND:
 MAINTENANCE RESPONSIBILITIES

ADOT ROW AND MAINTAINED

ADOT ROW MAINTAINED BY CITY OF GLENDALE ●

● SEE NOTE 1 FOR LANDSCAPING RESPONSIBILITIES
 ● SEE NOTE 2 FOR SOUND WALL RESPONSIBILITIES

NOTE: ADOT IS RESPONSIBLE FOR THE STRUCTURAL INTEGRITY OF PCCP, SCREEN AND SOUND WALLS, THE GRAFFITI ABATEMENT ON MAINLINE AND RAMPS.

EXHIBIT A:
 MAINTENANCE LIMITS

75TH AVE TO 67TH AVE (2 OF 2)

ARIZONA DEPARTMENT OF TRANSPORTATION

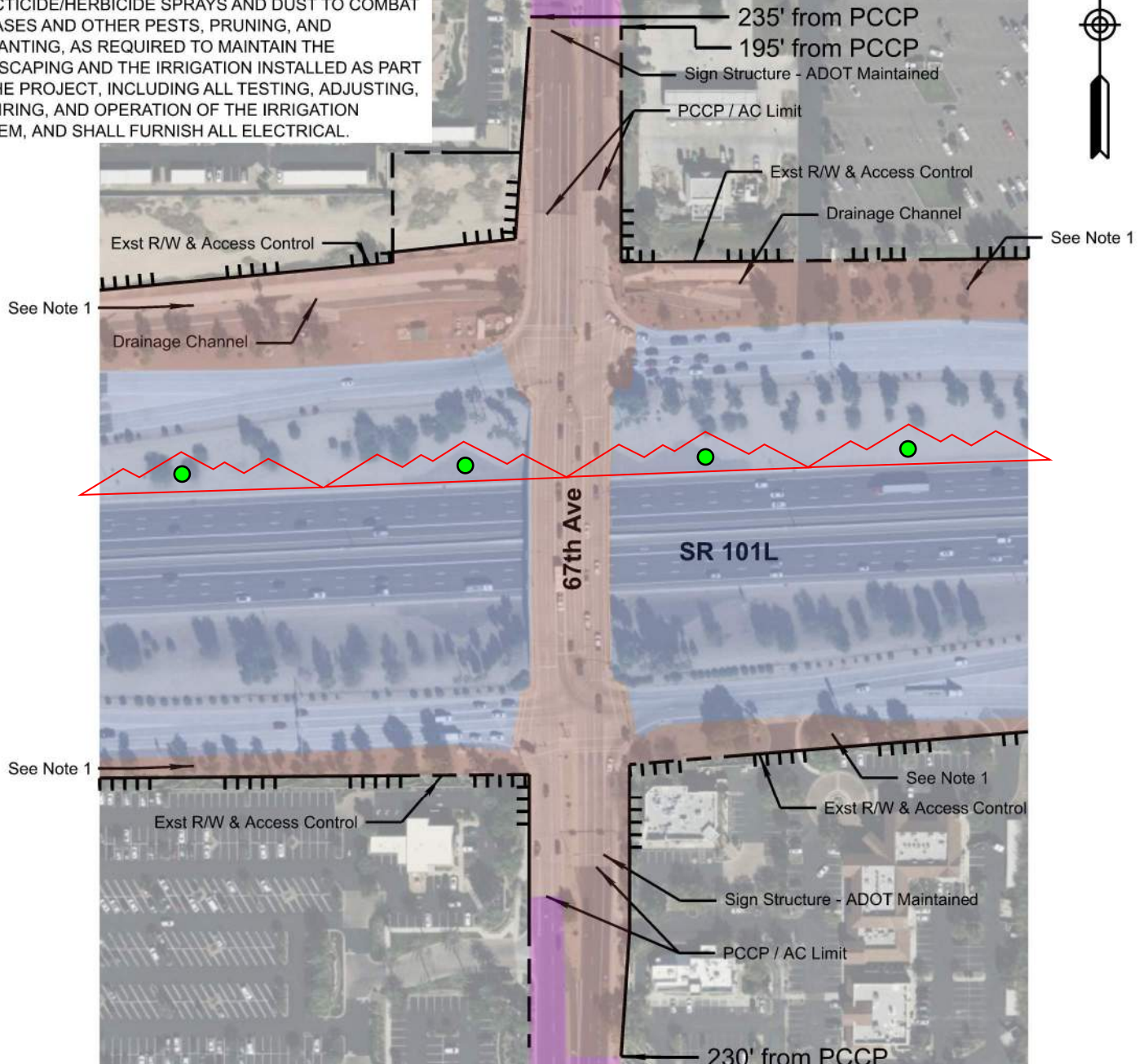
City of Glendale
 Intergovernmental Agreement No. _____

233 East Camelback Road, Suite 100
 Phoenix, AZ 85016
 Stanley Consultants, Inc.

EXHIBIT

NOTE 1:
 PROVIDE LANDSCAPE AND CONCRETE LINED CHANNEL MAINTENANCE IN ACCORDANCE WITH IGA 97-043-I. PROVIDE LANDSCAPE AND CONCRETE LINED CHANNEL MAINTENANCE OF ALL FEATURES WITHIN THE DEFINED AREAS OF THE CITY'S RESPONSIBILITY, IN ACCORDANCE WITH ACCEPTED HORTICULTURAL PRACTICES, KEEPING ALL AREAS FREE OF WEEDS, UNDESIRABLE GRASSES, AND LITTER, APPLYING IRRIGATION WATER, FURNISHING AND APPLYING INSECTICIDE/HERBICIDE SPRAYS AND DUST TO COMBAT DISEASES AND OTHER PESTS, PRUNING, AND REPLANTING, AS REQUIRED TO MAINTAIN THE LANDSCAPING AND THE IRRIGATION INSTALLED AS PART OF THE PROJECT, INCLUDING ALL TESTING, ADJUSTING, REPAIRING, AND OPERATION OF THE IRRIGATION SYSTEM, AND SHALL FURNISH ALL ELECTRICAL.

NOTE 2:
 MAINTENANCE OF CROSSROAD AND/OR SIDE STREET RESPONSIBILITIES INCLUDE MEDIAN DIVIDERS AND PAVERS, WEEDS, SCREEN AND SOUND WALLS (CITY SIDE & NON-STRUCTURAL), TRASH, DEBRIS, SWEEPING, GRAFFITI REMOVAL AND REMOVAL OF NON-HAZARDOUS SPILLS.



LEGEND:
 MAINTENANCE RESPONSIBILITIES

- ADOT ROW AND MAINTAINED
- ADOT ROW MAINTAINED BY CITY OF GLENDALE ●
- CITY OF GLENDALE ROW MAINTAINED BY CITY OF GLENDALE

● THE CITY OF GLENDALE WILL MAINTAIN THE LANDFORM GRAPHICS ON SR 101L. THIS INCLUDES MAINTAINING THE DECOMPOSED GRANITE AND BRICK PAVERS, KEEPING THE SURROUNDING SLOPE AREAS FREE OF WEEDS, UNDESIRABLE GRASSES, AND LITTER/TRASH, AND DAMAGE REPAIR FROM EROSION, ERRANT VEHICLES, OR VANDALISM.

● SEE NOTE 1 FOR LANDSCAPING RESPONSIBILITIES, SEE NOTE 2 FOR CROSSROAD RESPONSIBILITIES

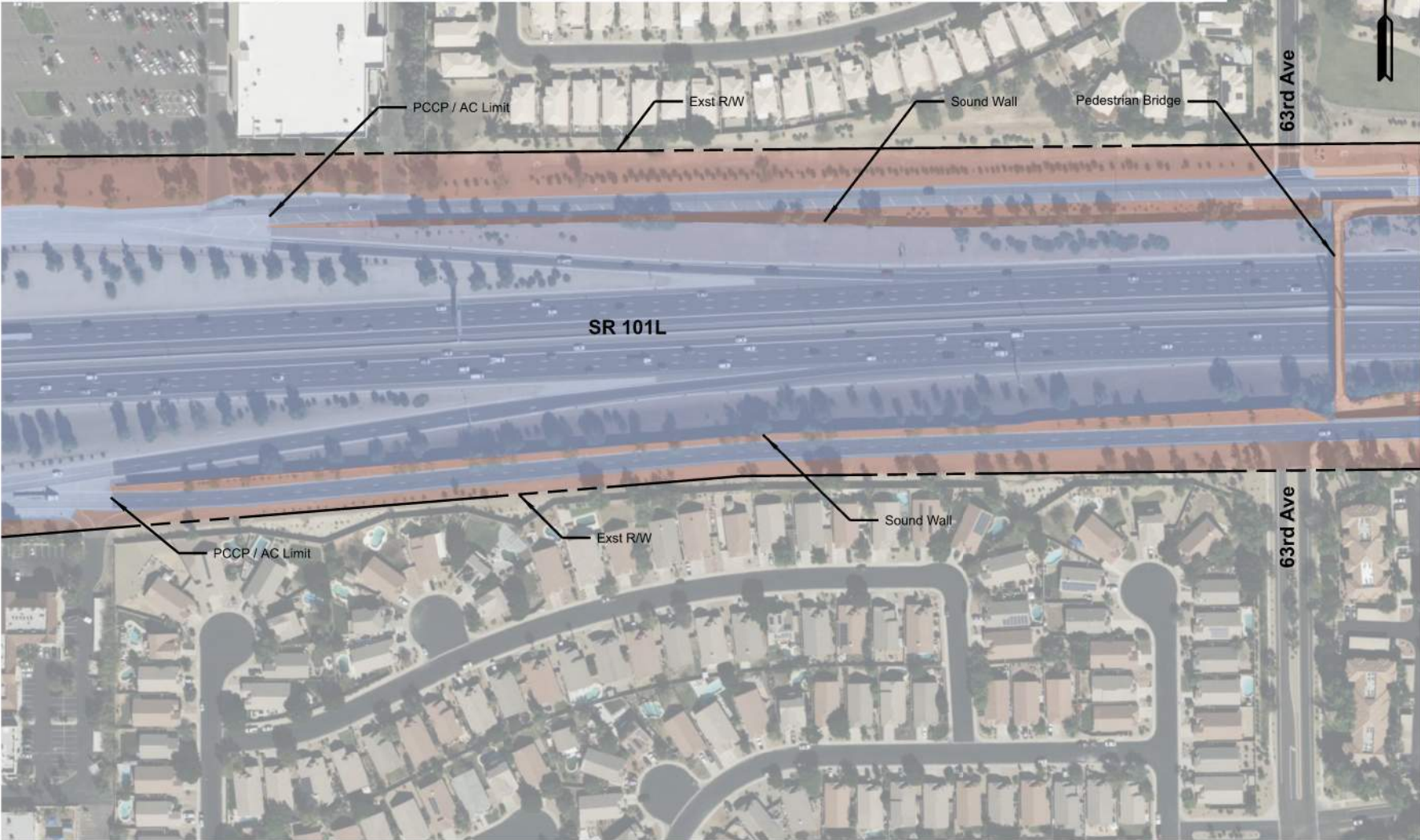
NOTE: ADOT IS RESPONSIBLE FOR THE STRUCTURAL INTEGRITY OF PCCP, TI OP BRIDGE, SCREEN AND SOUND WALLS, THE GRAFFITI ABATEMENT ON MAINLINE AND RAMPS, THE STRUCTURAL AND NONSTRUCTURAL MAINTENANCE OF THE EXPANDED METAL PEDESTRIAN FENCING ON THE BRIDGES OVER THE SR 101L.

| | | | |
|--|---|----------------------------------|-------------------------------------|
| EXHIBIT | ARIZONA DEPARTMENT OF TRANSPORTATION | EXHIBIT A: MAINTENANCE LIMITS | |
| <small>333 East Camelback Road, Suite 800 Phoenix, AZ 85016 Phone 602 521-2000</small> | City of Glendale Intergovernmental Agreement No. _____ | ROUTE SR 101L | LOCATION SR 101L and 67th Avenue |

NOTE 1:
 PROVIDE LANDSCAPE AND CONCRETE LINED CHANNEL MAINTENANCE IN ACCORDANCE WITH IGA 97-043-I. PROVIDE LANDSCAPE AND CONCRETE LINED CHANNEL MAINTENANCE OF ALL FEATURES WITHIN THE DEFINED AREAS OF THE CITY'S RESPONSIBILITY, IN ACCORDANCE WITH ACCEPTED HORTICULTURAL PRACTICES, KEEPING ALL AREAS FREE OF WEEDS, UNDESIRABLE GRASSES, AND LITTER, APPLYING IRRIGATION WATER, FURNISHING AND APPLYING INSECTICIDE/HERBICIDE SPRAYS AND DUST TO COMBAT DISEASES AND OTHER PESTS, PRUNING, AND REPLANTING, AS REQUIRED TO MAINTAIN THE LANDSCAPING AND THE IRRIGATION INSTALLED AS PART OF THE PROJECT, INCLUDING ALL TESTING, ADJUSTING, REPAIRING, AND OPERATION OF THE IRRIGATION SYSTEM, AND SHALL FURNISH ALL ELECTRICAL.


NOTE 2:
 MAINTENANCE OF CROSSROAD AND/OR SIDE STREET RESPONSIBILITIES INCLUDE MEDIAN DIVIDERS AND PAVERS, WEEDS, SCREEN AND SOUND WALLS (CITY SIDE & NON-STRUCTURAL), TRASH, DEBRIS, SWEEPING, GRAFFITI REMOVAL, AND REMOVAL OF NON-HAZARDOUS SPILLS.

NOTE 3:
 RESPONSIBILITIES INCLUDE INSPECTING, MAINTAINING, AND OPERATING THE 63RD AVE / SR 101L PEDESTRIAN BRIDGE IN ACCORDANCE WITH IGA 07-032-I.



LEGEND:
 MAINTENANCE RESPONSIBILITIES

 ADOT ROW AND MAINTAINED

 ADOT ROW MAINTAINED BY CITY OF GLENDALE ●

● SEE NOTE 1 FOR LANDSCAPING RESPONSIBILITIES
 ● SEE NOTE 2 FOR SOUND WALL RESPONSIBILITIES
 ● SEE NOTE 3 FOR PEDESTRIAN BRIDGE RESPONSIBILITIES

NOTE: ADOT IS RESPONSIBLE FOR THE STRUCTURAL INTEGRITY OF PCCP, SCREEN AND SOUND WALLS, THE GRAFFITI ABATEMENT ON MAINLINE AND RAMPS.

EXHIBIT A:
 MAINTENANCE LIMITS

67TH AVE TO 59TH AVE (1 OF 2)

ARIZONA DEPARTMENT OF TRANSPORTATION

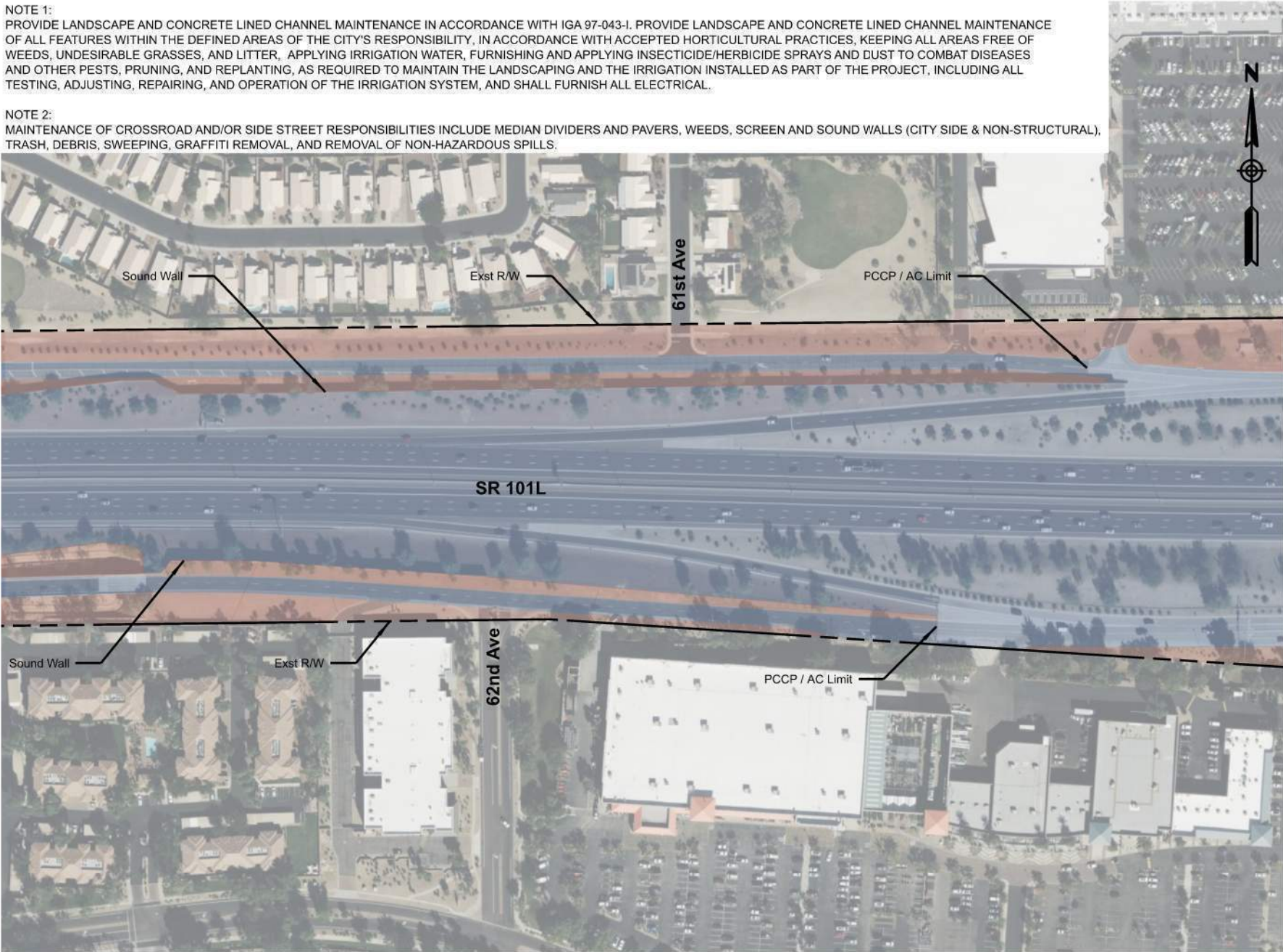
City of Glendale
 Intergovernmental Agreement No. _____

233 East Camelback Road, Suite 100
 Phoenix, AZ 85016
 Stanley Consultants, Inc.

EXHIBIT


NOTE 1:
 PROVIDE LANDSCAPE AND CONCRETE LINED CHANNEL MAINTENANCE IN ACCORDANCE WITH IGA 97-043-I. PROVIDE LANDSCAPE AND CONCRETE LINED CHANNEL MAINTENANCE OF ALL FEATURES WITHIN THE DEFINED AREAS OF THE CITY'S RESPONSIBILITY, IN ACCORDANCE WITH ACCEPTED HORTICULTURAL PRACTICES, KEEPING ALL AREAS FREE OF WEEDS, UNDESIRABLE GRASSES, AND LITTER. APPLYING IRRIGATION WATER, FURNISHING AND APPLYING INSECTICIDE/HERBICIDE SPRAYS AND DUST TO COMBAT DISEASES AND OTHER PESTS, PRUNING, AND REPLANTING, AS REQUIRED TO MAINTAIN THE LANDSCAPING AND THE IRRIGATION INSTALLED AS PART OF THE PROJECT, INCLUDING ALL TESTING, ADJUSTING, REPAIRING, AND OPERATION OF THE IRRIGATION SYSTEM, AND SHALL FURNISH ALL ELECTRICAL.

NOTE 2:
 MAINTENANCE OF CROSSROAD AND/OR SIDE STREET RESPONSIBILITIES INCLUDE MEDIAN DIVIDERS AND PAVERS, WEEDS, SCREEN AND SOUND WALLS (CITY SIDE & NON-STRUCTURAL), TRASH, DEBRIS, SWEEPING, GRAFFITI REMOVAL, AND REMOVAL OF NON-HAZARDOUS SPILLS.



LEGEND:
 MAINTENANCE RESPONSIBILITIES

 ADOT ROW AND MAINTAINED

 ADOT ROW MAINTAINED BY CITY OF GLENDALE

● SEE NOTE 1 FOR LANDSCAPING RESPONSIBILITIES
 ● SEE NOTE 2 FOR SOUND WALL RESPONSIBILITIES

NOTE: ADOT IS RESPONSIBLE FOR THE STRUCTURAL INTEGRITY OF PCCP, SCREEN AND SOUND WALLS, THE GRAFFITI ABATEMENT ON MAINLINE AND RAMPS.

EXHIBIT A:
 MAINTENANCE LIMITS

67TH AVE TO 59TH AVE (2 OF 2)

ARIZONA DEPARTMENT OF TRANSPORTATION

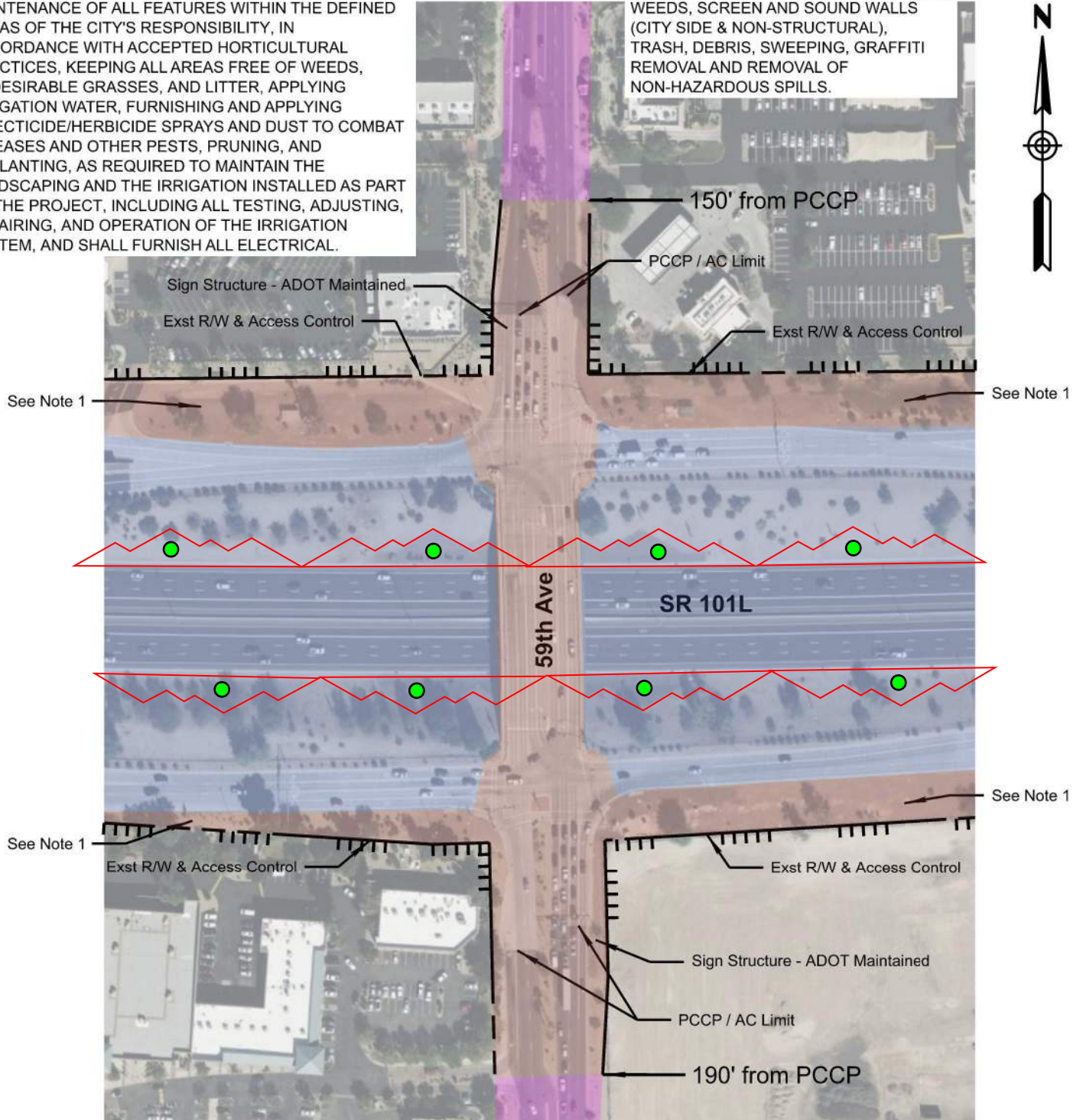
City of Glendale
 Intergovernmental Agreement No. _____

233 East Camelback Road, Suite 100
 Phoenix, AZ 85016
 Stanley Consultants, Inc.

EXHIBIT

NOTE 1:
 PROVIDE LANDSCAPE AND CONCRETE LINED CHANNEL MAINTENANCE IN ACCORDANCE WITH IGA 97-043-I. PROVIDE LANDSCAPE AND CONCRETE CHANNEL MAINTENANCE OF ALL FEATURES WITHIN THE DEFINED AREAS OF THE CITY'S RESPONSIBILITY, IN ACCORDANCE WITH ACCEPTED HORTICULTURAL PRACTICES, KEEPING ALL AREAS FREE OF WEEDS, UNDESIRABLE GRASSES, AND LITTER, APPLYING IRRIGATION WATER, FURNISHING AND APPLYING INSECTICIDE/HERBICIDE SPRAYS AND DUST TO COMBAT DISEASES AND OTHER PESTS, PRUNING, AND REPLANTING, AS REQUIRED TO MAINTAIN THE LANDSCAPING AND THE IRRIGATION INSTALLED AS PART OF THE PROJECT, INCLUDING ALL TESTING, ADJUSTING, REPAIRING, AND OPERATION OF THE IRRIGATION SYSTEM, AND SHALL FURNISH ALL ELECTRICAL.

NOTE 2:
 MAINTENANCE OF CROSSROAD AND/OR SIDE STREET RESPONSIBILITIES INCLUDE MEDIAN DIVIDERS AND PAVERS, WEEDS, SCREEN AND SOUND WALLS (CITY SIDE & NON-STRUCTURAL), TRASH, DEBRIS, SWEEPING, GRAFFITI REMOVAL AND REMOVAL OF NON-HAZARDOUS SPILLS.



LEGEND:
 MAINTENANCE RESPONSIBILITIES

- ADOT ROW AND MAINTAINED
- ADOT ROW MAINTAINED BY CITY OF GLENDALE ●
- CITY OF GLENDALE ROW MAINTAINED BY CITY OF GLENDALE

● THE CITY OF GLENDALE WILL MAINTAIN THE LANDFORM GRAPHICS ON SR 101L. THIS INCLUDES MAINTAINING THE DECOMPOSED GRANITE AND BRICK PAVERS, KEEPING THE SURROUNDING SLOPE AREAS FREE OF WEEDS, UNDESIRABLE GRASSES, AND LITTER/TRASH, AND DAMAGE REPAIR FROM EROSION, ERRANT VEHICLES, OR VANDALISM.

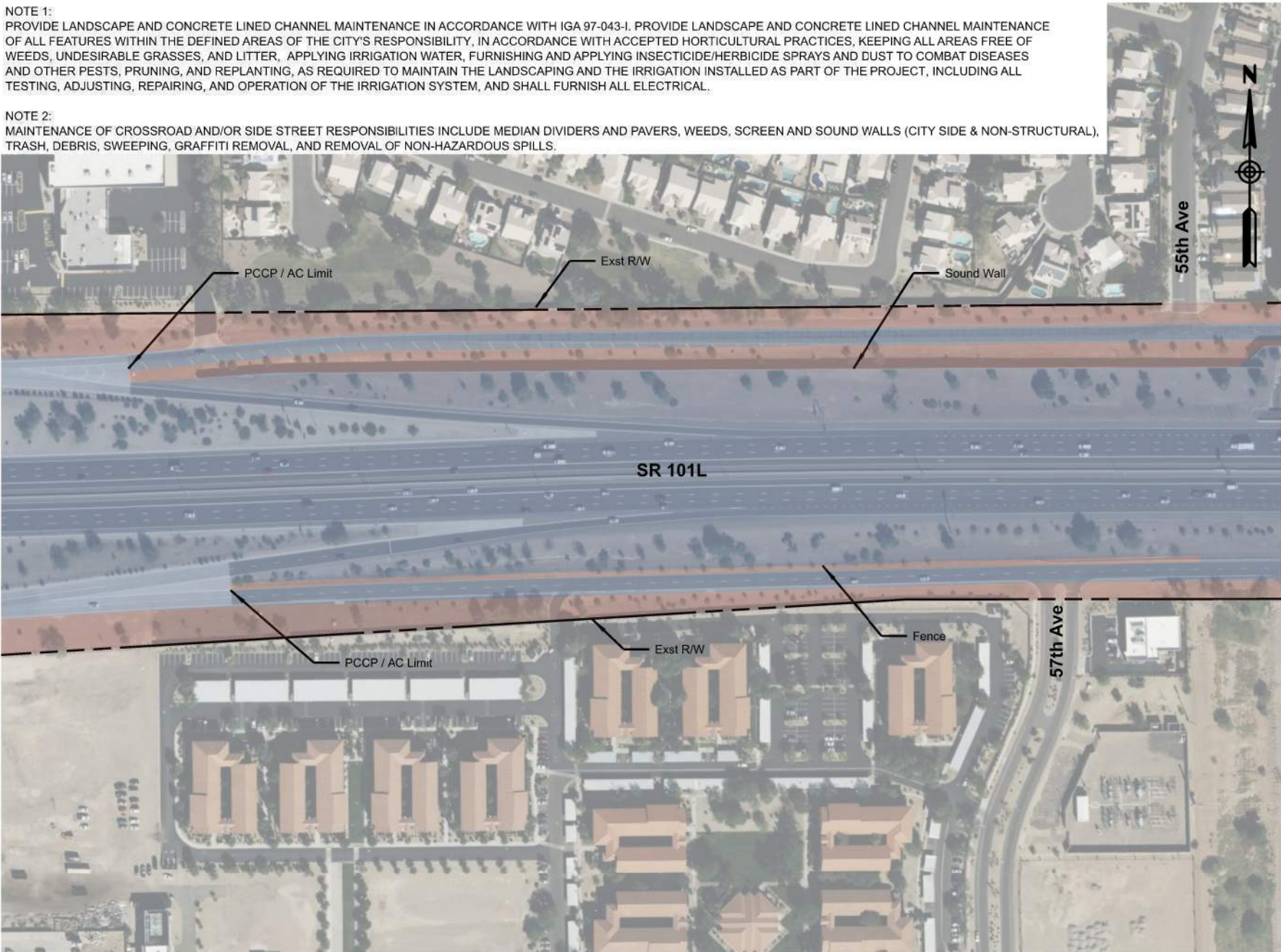
● SEE NOTE 1 FOR LANDSCAPING RESPONSIBILITIES, SEE NOTE 2 FOR CROSSROAD RESPONSIBILITIES

NOTE: ADOT IS RESPONSIBLE FOR THE STRUCTURAL INTEGRITY OF PCCP, TI OP BRIDGE, SCREEN AND SOUND WALLS, THE GRAFFITI ABATEMENT ON MAINLINE AND RAMPS, THE STRUCTURAL AND NONSTRUCTURAL MAINTENANCE OF THE EXPANDED METAL PEDESTRIAN FENCING ON THE BRIDGES OVER THE SR 101L.

| | | | |
|--|---|----------------------------------|-------------------------------------|
| EXHIBIT | ARIZONA DEPARTMENT OF TRANSPORTATION | EXHIBIT A: MAINTENANCE LIMITS | |
| <small>333 East Camelback Road, Suite 800 Phoenix, AZ 85016 Phone 602 533-2200</small> | City of Glendale Intergovernmental Agreement No. _____ | ROUTE SR 101L | LOCATION SR 101L and 59th Avenue |


NOTE 1:
 PROVIDE LANDSCAPE AND CONCRETE LINED CHANNEL MAINTENANCE IN ACCORDANCE WITH IGA 97-043-I. PROVIDE LANDSCAPE AND CONCRETE LINED CHANNEL MAINTENANCE OF ALL FEATURES WITHIN THE DEFINED AREAS OF THE CITY'S RESPONSIBILITY, IN ACCORDANCE WITH ACCEPTED HORTICULTURAL PRACTICES, KEEPING ALL AREAS FREE OF WEEDS, UNDESIRABLE GRASSES, AND LITTER. APPLYING IRRIGATION WATER, FURNISHING AND APPLYING INSECTICIDE/HERBICIDE SPRAYS AND DUST TO COMBAT DISEASES AND OTHER PESTS, PRUNING, AND REPLANTING, AS REQUIRED TO MAINTAIN THE LANDSCAPING AND THE IRRIGATION INSTALLED AS PART OF THE PROJECT, INCLUDING ALL TESTING, ADJUSTING, REPAIRING, AND OPERATION OF THE IRRIGATION SYSTEM, AND SHALL FURNISH ALL ELECTRICAL.

NOTE 2:
 MAINTENANCE OF CROSSROAD AND/OR SIDE STREET RESPONSIBILITIES INCLUDE MEDIAN DIVIDERS AND PAVERS, WEEDS, SCREEN AND SOUND WALLS (CITY SIDE & NON-STRUCTURAL), TRASH, DEBRIS, SWEEPING, GRAFFITI REMOVAL, AND REMOVAL OF NON-HAZARDOUS SPILLS.



LEGEND:
 MAINTENANCE RESPONSIBILITIES

 ADOT ROW AND MAINTAINED

 ADOT ROW MAINTAINED BY CITY OF GLENDALE ●

● SEE NOTE 1 FOR LANDSCAPING RESPONSIBILITIES
 ● SEE NOTE 2 FOR SOUND WALL RESPONSIBILITIES

NOTE: ADOT IS RESPONSIBLE FOR THE STRUCTURAL INTEGRITY OF PCCP, SCREEN AND SOUND WALLS, THE GRAFFITI ABATEMENT ON MAINLINE AND RAMPS.

EXHIBIT A:
 MAINTENANCE LIMITS

59TH AVE TO 51ST AVE (1 OF 2)

ARIZONA DEPARTMENT OF TRANSPORTATION

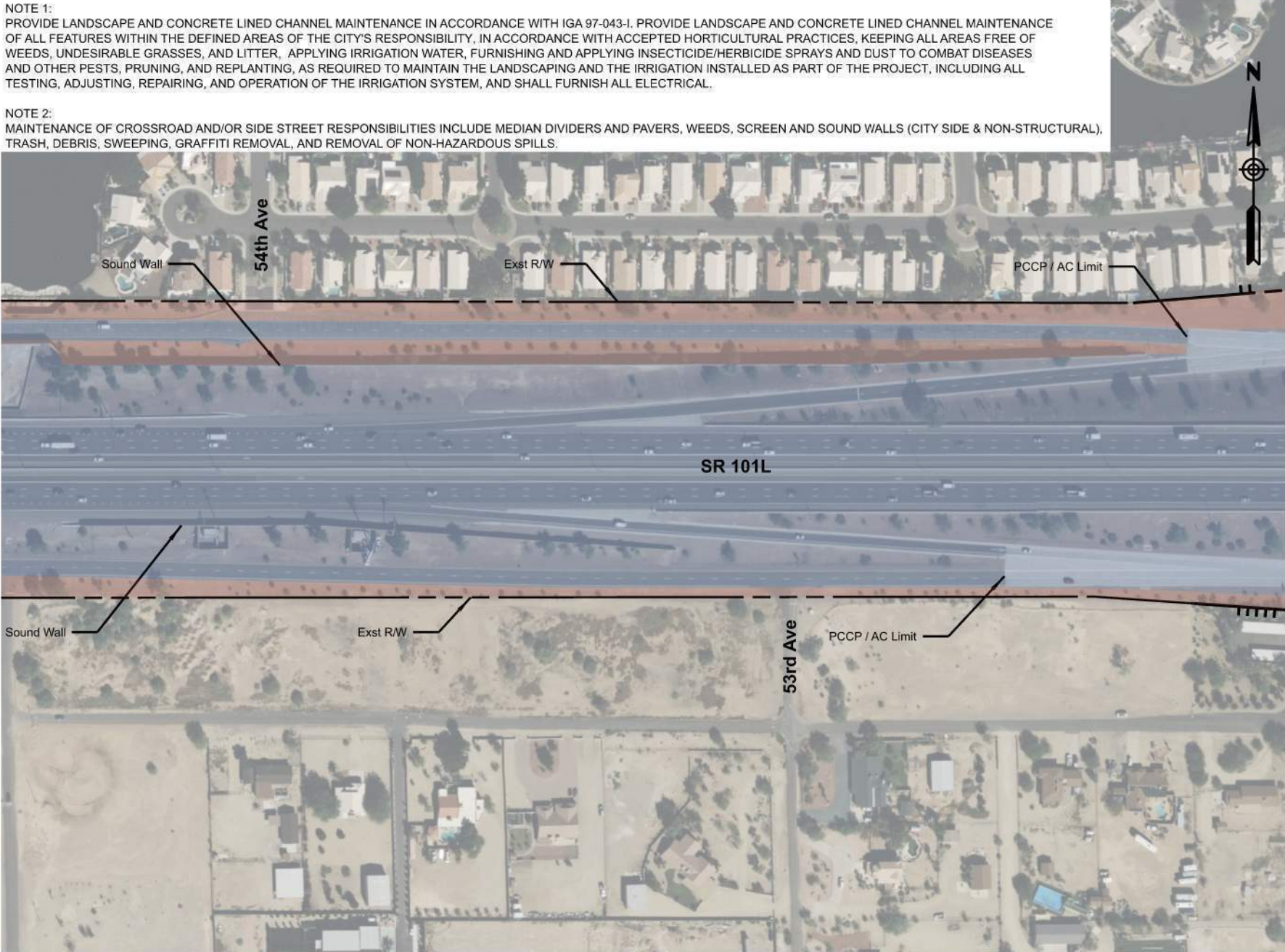
City of Glendale
 Intergovernmental Agreement No. _____

233 East Camelback Road, Suite 100
 Phoenix, AZ 85016
 Stanley Consultants, LLC

EXHIBIT

NOTE 1:
 PROVIDE LANDSCAPE AND CONCRETE LINED CHANNEL MAINTENANCE IN ACCORDANCE WITH IGA 97-043-I. PROVIDE LANDSCAPE AND CONCRETE LINED CHANNEL MAINTENANCE OF ALL FEATURES WITHIN THE DEFINED AREAS OF THE CITY'S RESPONSIBILITY, IN ACCORDANCE WITH ACCEPTED HORTICULTURAL PRACTICES, KEEPING ALL AREAS FREE OF WEEDS, UNDESIRABLE GRASSES, AND LITTER. APPLYING IRRIGATION WATER, FURNISHING AND APPLYING INSECTICIDE/HERBICIDE SPRAYS AND DUST TO COMBAT DISEASES AND OTHER PESTS, PRUNING, AND REPLANTING, AS REQUIRED TO MAINTAIN THE LANDSCAPING AND THE IRRIGATION INSTALLED AS PART OF THE PROJECT, INCLUDING ALL TESTING, ADJUSTING, REPAIRING, AND OPERATION OF THE IRRIGATION SYSTEM, AND SHALL FURNISH ALL ELECTRICAL.

NOTE 2:
 MAINTENANCE OF CROSSROAD AND/OR SIDE STREET RESPONSIBILITIES INCLUDE MEDIAN DIVIDERS AND PAVERS, WEEDS, SCREEN AND SOUND WALLS (CITY SIDE & NON-STRUCTURAL), TRASH, DEBRIS, SWEEPING, GRAFFITI REMOVAL, AND REMOVAL OF NON-HAZARDOUS SPILLS.



LEGEND:
 MAINTENANCE RESPONSIBILITIES

ADOT ROW AND MAINTAINED

ADOT ROW MAINTAINED BY CITY OF GLENDALE

● SEE NOTE 1 FOR LANDSCAPING RESPONSIBILITIES
 ● SEE NOTE 2 FOR SOUND WALL RESPONSIBILITIES

NOTE: ADOT IS RESPONSIBLE FOR THE STRUCTURAL INTEGRITY OF PCCP, SCREEN AND SOUND WALLS, THE GRAFFITI ABATEMENT ON MAINLINE AND RAMPS.

EXHIBIT A:
 MAINTENANCE LIMITS

59TH AVE TO 51ST AVE (2 OF 2)

ARIZONA DEPARTMENT OF TRANSPORTATION

City of Glendale
 Intergovernmental Agreement No. _____

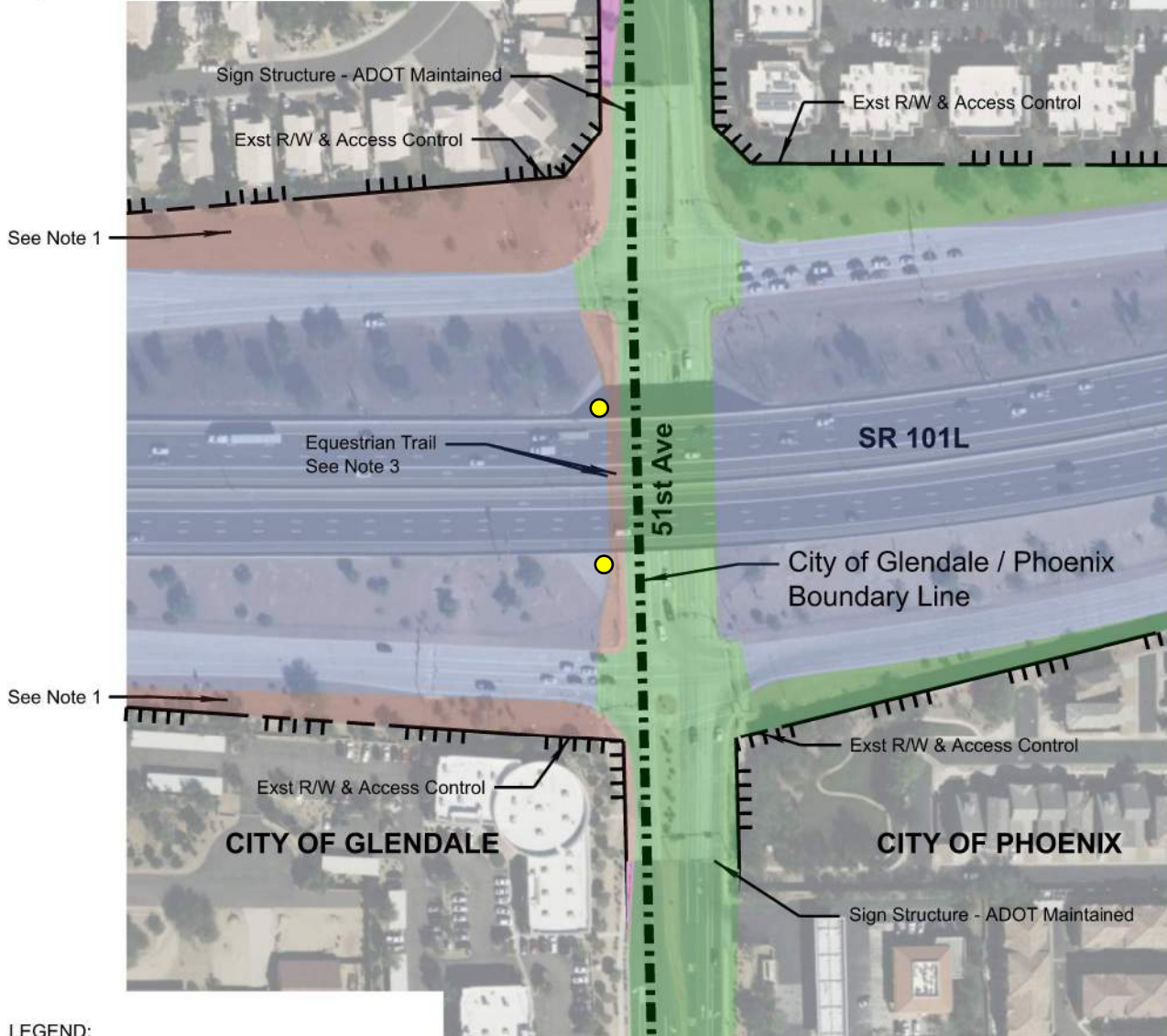
233 East Camelback Road, Suite 100
 Phoenix, AZ 85016
 Stanley Consultants, Inc.

EXHIBIT

NOTE 1:
 PROVIDE LANDSCAPE AND CONCRETE LINED CHANNEL MAINTENANCE IN ACCORDANCE WITH IGA 97-043-I. PROVIDE LANDSCAPE AND CONCRETE LINED CHANNEL MAINTENANCE OF ALL FEATURES WITHIN THE DEFINED AREAS OF THE CITY'S RESPONSIBILITY, IN ACCORDANCE WITH ACCEPTED HORTICULTURAL PRACTICES, KEEPING ALL AREAS FREE OF WEEDS, UNDESIRABLE GRASSES, AND LITTER, APPLYING IRRIGATION WATER, FURNISHING AND APPLYING INSECTICIDE/HERBICIDE SPRAYS AND DUST TO COMBAT DISEASES AND OTHER PESTS, PRUNING, AND REPLANTING, AS REQUIRED TO MAINTAIN THE LANDSCAPING AND THE IRRIGATION INSTALLED AS PART OF THE PROJECT, INCLUDING ALL TESTING, ADJUSTING, REPAIRING, AND OPERATION OF THE IRRIGATION SYSTEM, AND SHALL FURNISH ALL ELECTRICAL.

NOTE 2:
 MAINTENANCE OF CROSSROAD AND/OR SIDE STREET RESPONSIBILITIES INCLUDE WEEDS, SCREEN AND SOUND WALLS (CITY SIDE & NON-STRUCTURAL), TRASH, DEBRIS, GRAFFITI REMOVAL AND REMOVAL OF NON-HAZARDOUS SPILLS.

NOTE 3:
 PROVIDE EQUESTRIAN TRAIL AND FENCE MAINTENANCE IN ACCORDANCE WITH IGA 97-043-I. EQUESTRIAN TRAIL AND FENCE MAINTENANCE CONSISTS OF MAINTAINING THESE ELEMENTS IN GOOD REPAIR, FREE OF WEEDS, UNDESIRABLE GRASSES, AND LITTER.



LEGEND:
 MAINTENANCE RESPONSIBILITIES

- ADOT ROW AND MAINTAINED
- ADOT ROW MAINTAINED BY CITY OF GLENDALE ●
- CITY OF GLENDALE ROW MAINTAINED BY CITY OF GLENDALE
- MAINTAINED BY CITY OF PHOENIX ■

● THE CITY OF GLENDALE WILL MAINTAIN THE COILED SNAKE AND SAGUARO ICONS ON THE WEST SIDE OF 51ST AVE. THIS INCLUDES MAINTAINING PAINT CONDITION AND STRUCTURAL INTEGRITY OF THE ICONS.

● SEE NOTE 1 FOR LANDSCAPING RESPONSIBILITIES, SEE NOTE 2 FOR CROSSROAD RESPONSIBILITIES

NOTE: ADOT IS RESPONSIBLE FOR THE STRUCTURAL INTEGRITY OF PCCP, TI OP BRIDGE, SCREEN AND SOUND WALLS, THE GRAFFITI ABATEMENT ON MAINLINE AND RAMPS, THE STRUCTURAL AND NONSTRUCTURAL MAINTENANCE OF THE EXPANDED METAL PEDESTRIAN FENCING ON THE BRIDGES OVER THE SR 101L.

| | | | |
|--|---|----------------------------------|-------------------------------------|
| EXHIBIT | ARIZONA DEPARTMENT OF TRANSPORTATION | EXHIBIT A: MAINTENANCE LIMITS | |
| <small>333 East Camelback Road, Suite 800 Phoenix, AZ 85016 Phone 602 531-2000</small> | City of Glendale Intergovernmental Agreement No. _____ | ROUTE SR 101L | LOCATION SR 101L and 51st Avenue |