



CIOSI – Continuity of Operations Spaces

April 28, 2026





CIOSI Background

- October 14, 2025, City Council Workshop
- Scope: discuss the options and plans for the spaces collectively referred to as the “Continuity of Operations”
- Informational item, consensus is not requested



Continuity of Operations Spaces



Airport



Adult Center



Civic Center Campus



Sine Bldg.

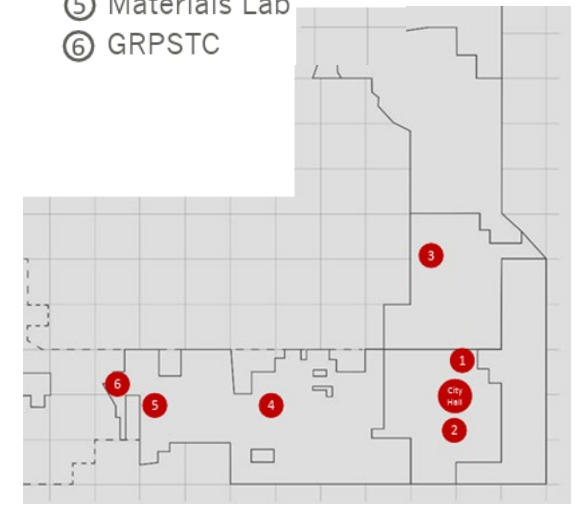


GRPSTC



Media Center

- ① Civic Center Campus
- ② Sine Building
- ③ Adult Center
- ④ Media Center
- ⑤ Materials Lab
- ⑥ GRPSTC

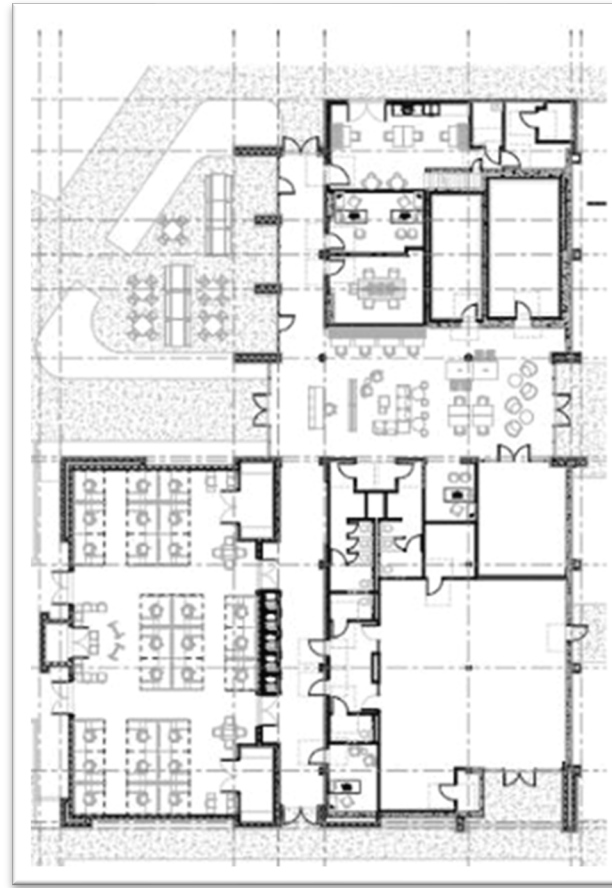




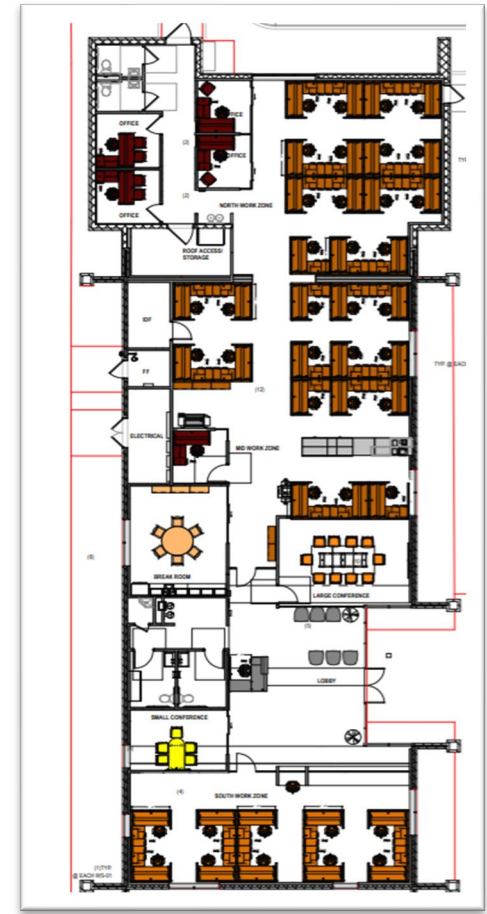
Civic Center Campus

Seamless One Stop Shop experience for the customer

Temporary location for City Clerk, Development Services (Planning & Admin), Budget & Finance (Customer Service) and Special Events (now a division of Parks & Recreation)



Annex

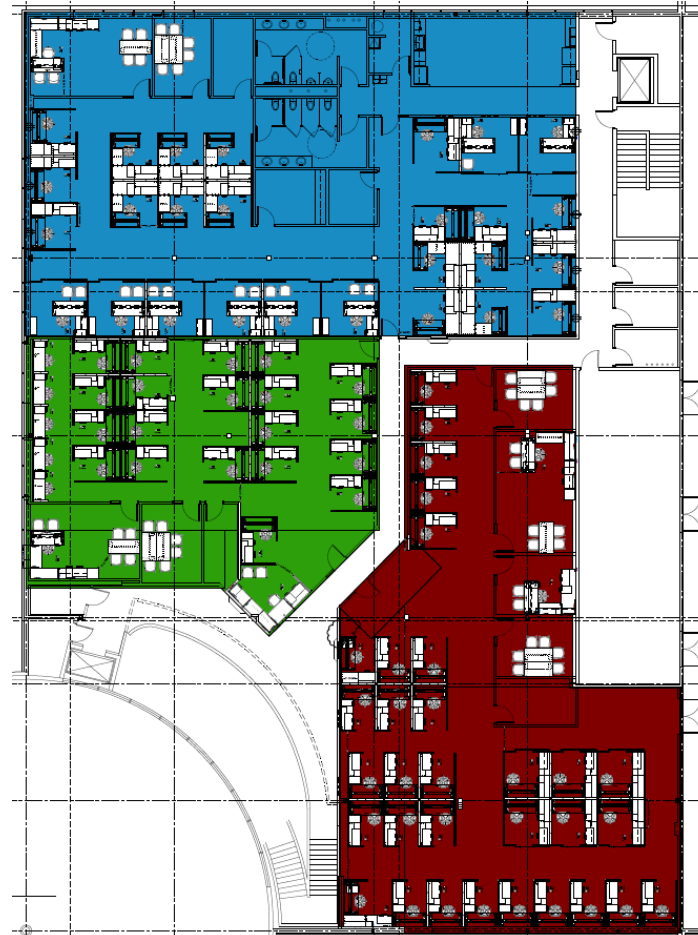


Bead

Adult Center

Improved previously vacant space

Temporary location for Human Resources & Risk Management; Engineering; and Budget & Finance Departments





Other Spaces

- Sine Building – City Attorney’s Office & Code Compliance
- GRPSTC – Development Services – inspection staff
- Airport Café – Engineering – inspection staff
- Promenade at Palmaire –Mail room & storage
- System of Care – Community Services



Space Summary

Space ID	Workstations	Offices	Conference Rooms	Total Occupant Spaces
Media Center 2nd Floor	12	3	1	15
Media Center 3rd Floor	7	9	1	16
Bead Building	41	4	3	45
Annex	41	2	1	43
Adult Center HR	21	7	1	28
Adult Center Eng	25	1	1	26
Adult Center B&F	26	8	1	34
GRPSTC (inspectors)	14	1	0	15
Airport Café (insp.)	13	1	0	14
Promenade at Palmaire	0	8	1	8
Sine Building (CAO)	0	7	2	7
Sine Building (Code Div.)	23	4	1	27



Departments to City Hall

- Mayor and Council Offices
- City Manager's Office
- City Attorney
- City Clerk
- Budget & Finance
- Development Services
- Economic Development
- Engineering
- Human Resources & Risk Management
- Intergovernmental Programs
- Organizational Performance
- *Special Events – Council Chamber Building



Other Departments

- Community Services – System of Care
- Code Compliance – Sine Building 2nd Floor
- Development Services (Inspection Services)
 - Relocated to GRPSTC; programmed to move to Annex (space currently occupied by Special Events) in July/August 2026
- Engineering (Inspection Services)
 - Relocated to Airport Café; programmed to move to Operations Campus in future
- Internal Audit Program
 - Relocated to Foothills Library; will have hoteling space at City Hall



Other Programmed Moves

- Communications – move to Sine Building 2nd Floor
 - Partial department move in July 2026
 - Video team to remain at Media Center 2nd Floor
- CVB – move to Media Center 2nd Floor
 - Currently in Westgate leased space; move in June 2026
- Parks & Recreation (Administration group)
 - Move from Main Library to Adult Center 2nd Floor
 - Programmed into space currently Human Resources & Risk Mgt.



Leased Space

- Westgate
 - Occupied by Economic Development and CVB
 - Vacated by June 2026
 - Lease terminates in July 2026
- Media Center 3rd Floor
 - Return to Renaissance Hotel



Programming Summary

Space ID	Programming
Media Center 2nd Floor	Communications (video team) & CVB
Media Center 3rd Floor	Vacate leased space
Adult Center HR	Parks & Recreation (Administration function)
GRPSTC (inspectors)	Fire Department
Airport Café (insp.)	Engineering (Inspection group)
Sine Building (CAO)	Communications
Sine Building (Code Div.)	Code Compliance Division
Annex	Return to Civic Center (DS Inspectors to occupy Special Event Space)
Bead Building	
Adult Center Eng	
Adult Center B&F	
Palmaire	



Other Space Considerations

- Space may be needed to support upcoming capital projects
 - City operations need to continue to provide seamless service
 - Foothills Public Safety
 - Main Public Safety
 - Glendale Operations Campus
 - Main Library



Innovation & Technology

- Space Needs:

- open floor plan, low workstation walls, direct sunlight
- utilize shared spaces
- proximity to customer base
- confidential data and operations
- storage for IT equipment
- covered staff parking

Ideal Size: 8 offices and 48 workstations

Not Needed:

- Lobby (no public access)
- Data center (not being moved)



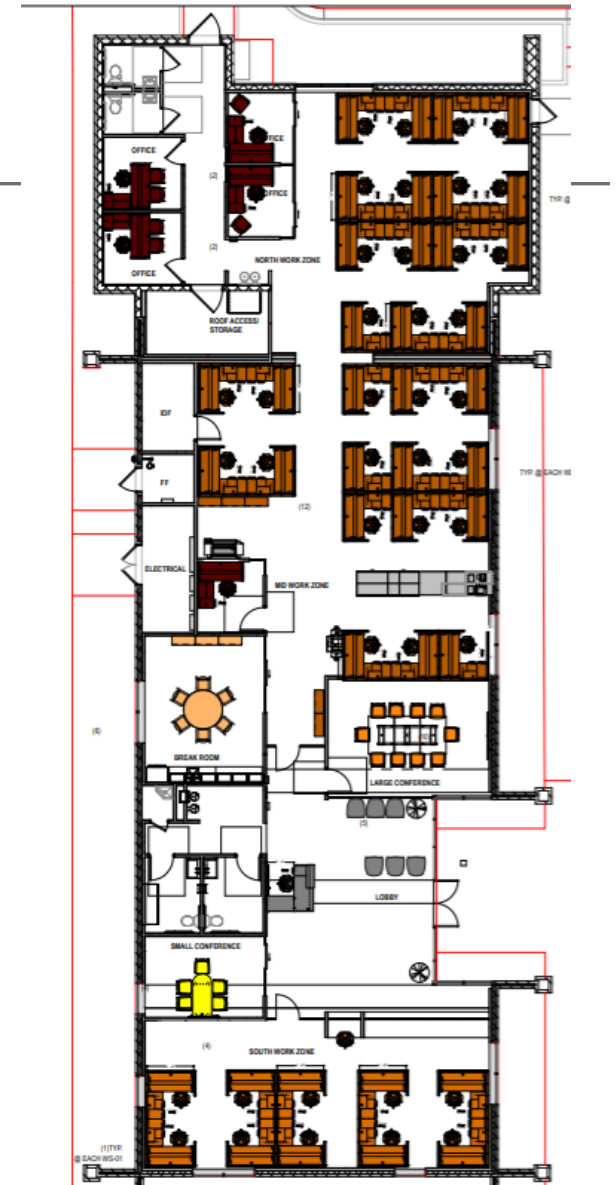
IT Options – not recommended

Space ID	Programming
Media Center 2nd Floor	Communications (video team) & CVB
Media Center 3rd Floor	Vacate leased space
Adult Center HR	Parks & Recreation (Administration function)
GRPSTC (inspectors)	Fire Department
Airport Café (insp.)	Engineering (Inspection group)
Sine Building (CAO)	Communications
Sine Building (Code Div.)	Code Compliance Division
Annex	Return to Civic Center (DS Inspectors to occupy Special Event Space)



IT - Bead Building

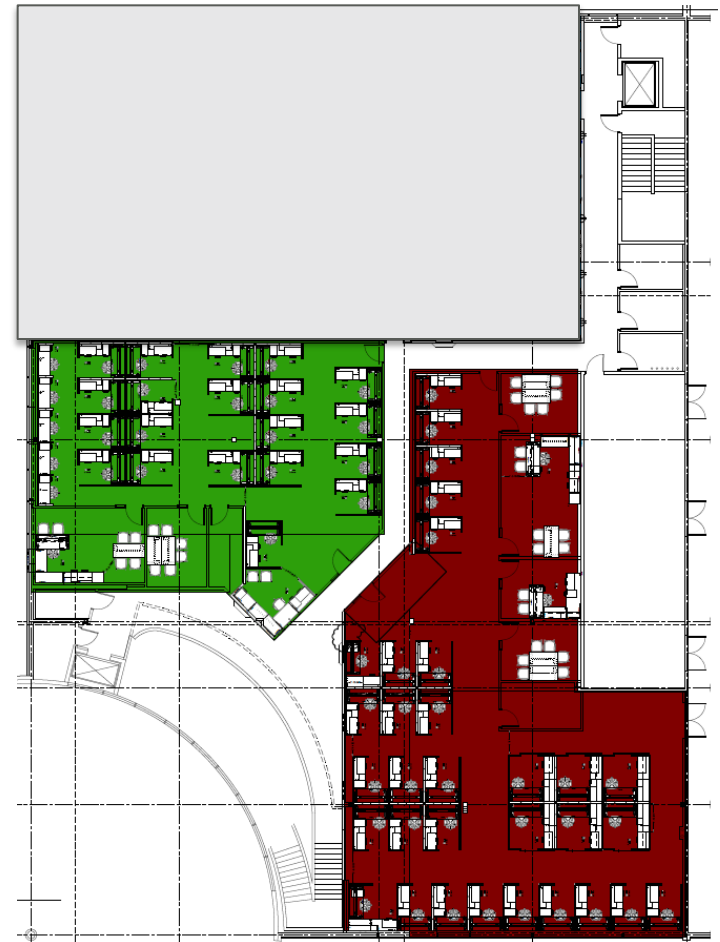
- Currently 41 workstations, 9 offices, 3 conference rooms
- Located downtown adjacent to covered parking





IT - Adult Center

- Currently 51 workstations, 9 office, 2 conference rooms
- Would need tenant improvements
- Not compatible with other building use
- Cybersecurity concerns
- Located 2.5 miles north of downtown (not ideal)
- No covered parking





IT – Promenade at Palmaire

- Adequate space for all staff; would need tenant improvements
- Located downtown near customer base
- Adjacent to covered parking
- Server room exists (fire suppression)





IT Options – Comparison

Amenity/Need	Adult Center	Bead Building	Promenade at Palmaire
Adequate space	✓	✗	✓
Downtown proximity	✗	✓	✓
Confidentiality	✗	✓	✓
Covered parking	✗	✓	✓
Limited Potential Alternate Use	✗	✗	✓