



Update #42 Downtown Campus Reinvestment Project

City Council Workshop

April 28, 2026

Presenters: Eddie Garcia, City Architect, Thomas Adkins, Deputy City Manager



Site Activities





Murphy Park



NE Corner

Murphy Park



Gazebo Foundations



Murphy Park





Murphy Park



SE View



Amphitheater



Amphitheater



SE Approach

Amphitheater



Stage

Interior Progress

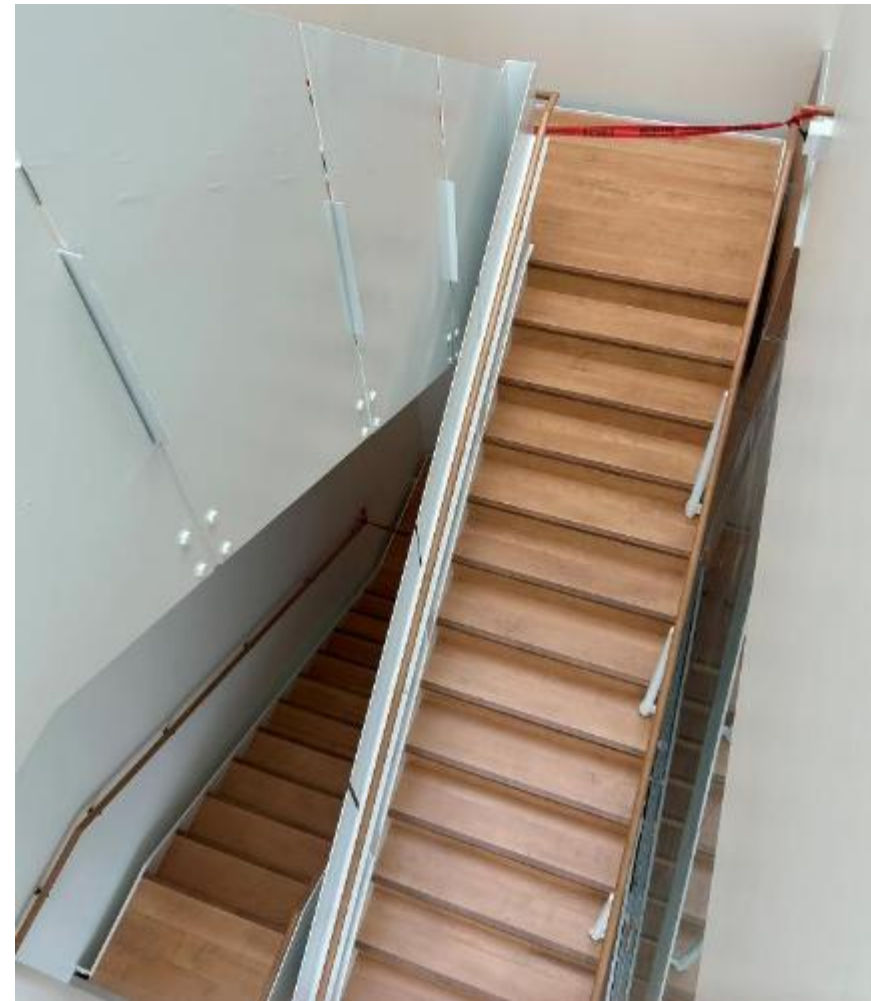
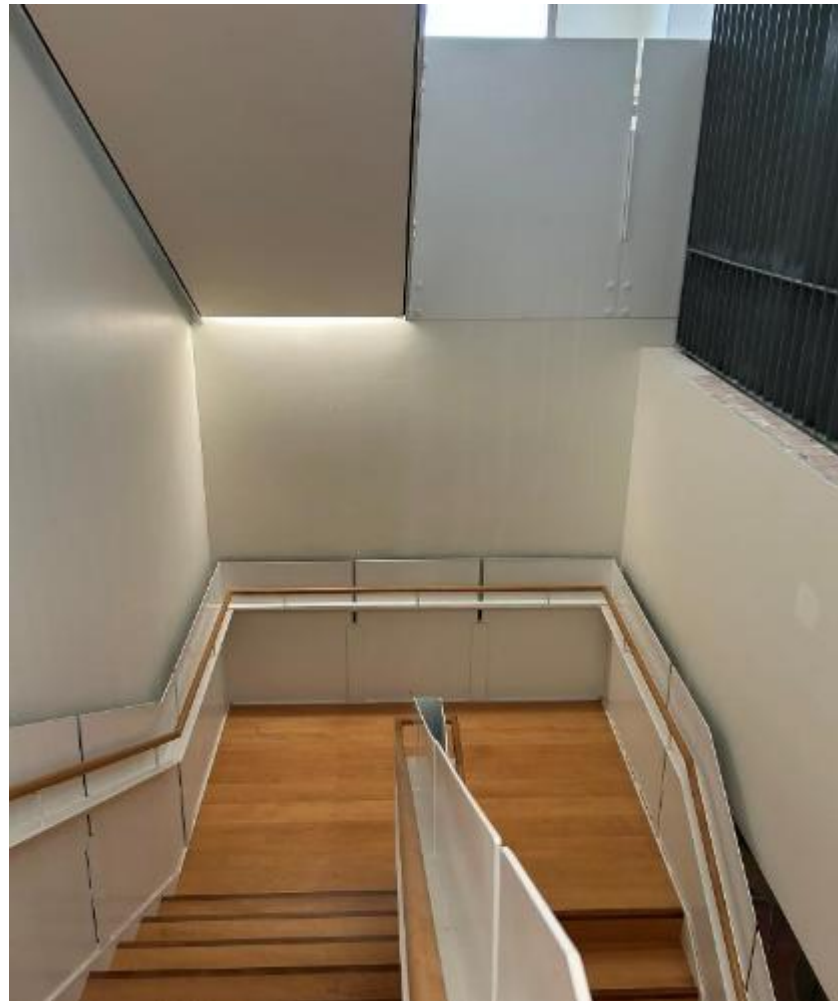


Interior Progress



Level 1

Interior Progress



Interior Progress



Meeting Spaces

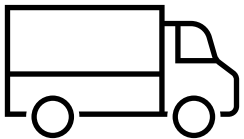




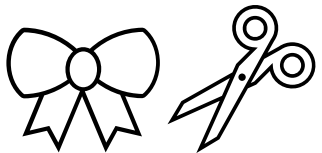
Key Dates



- Substantial Completion: City Hall, Parking Structure
- TCO: City Hall, Parking Structure
- COO: Target end of May



- Move-In: May 18th (All Departments Programmed)
- Continuity of Operations: Budget & Finance (Annex, Adult Center)



- Ribbon Cutting: June 18th
- Celebratory Event: June 20th Amphitheater & Murphy Park

Re-Opening Celebration

- June 18 - Ribbon Cutting
 - Speakers, Displays, Tours
 - Invites to Dignitaries and Former Elected Officials
 - New Time Capsule
- June 20 – Community Celebration
 - Arts/Essay Contest
 - Glendale Summer Band
 - Drone Show





New Time Capsule: Celebrating Glendale's Spirit



Seeking Council Consensus:

- Installation: June 18, 2026
- Proposed opening: June 18, 2060
(Glendale's 150th Birthday)
- Contributors:
 - City Council
 - Community Partners
 - City Employees

 Thank You

