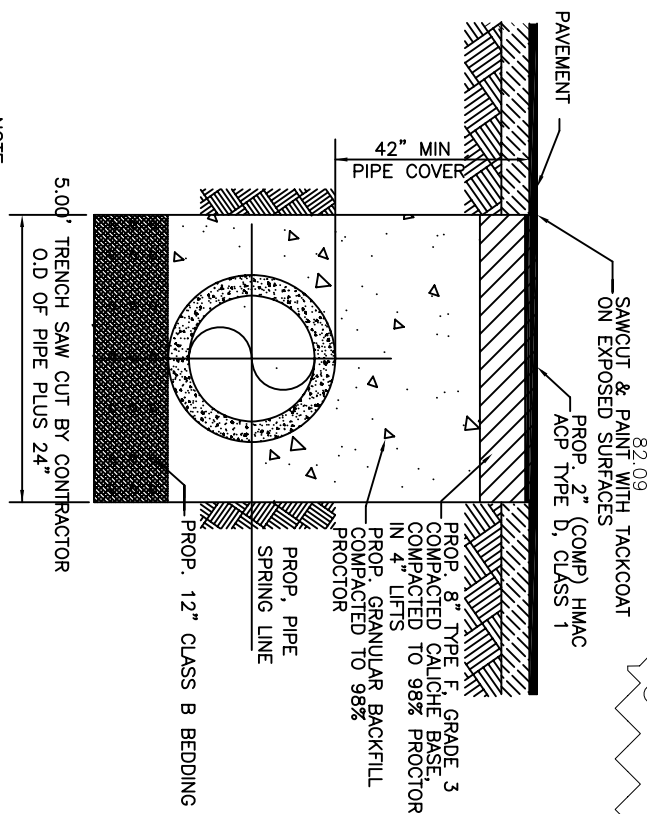
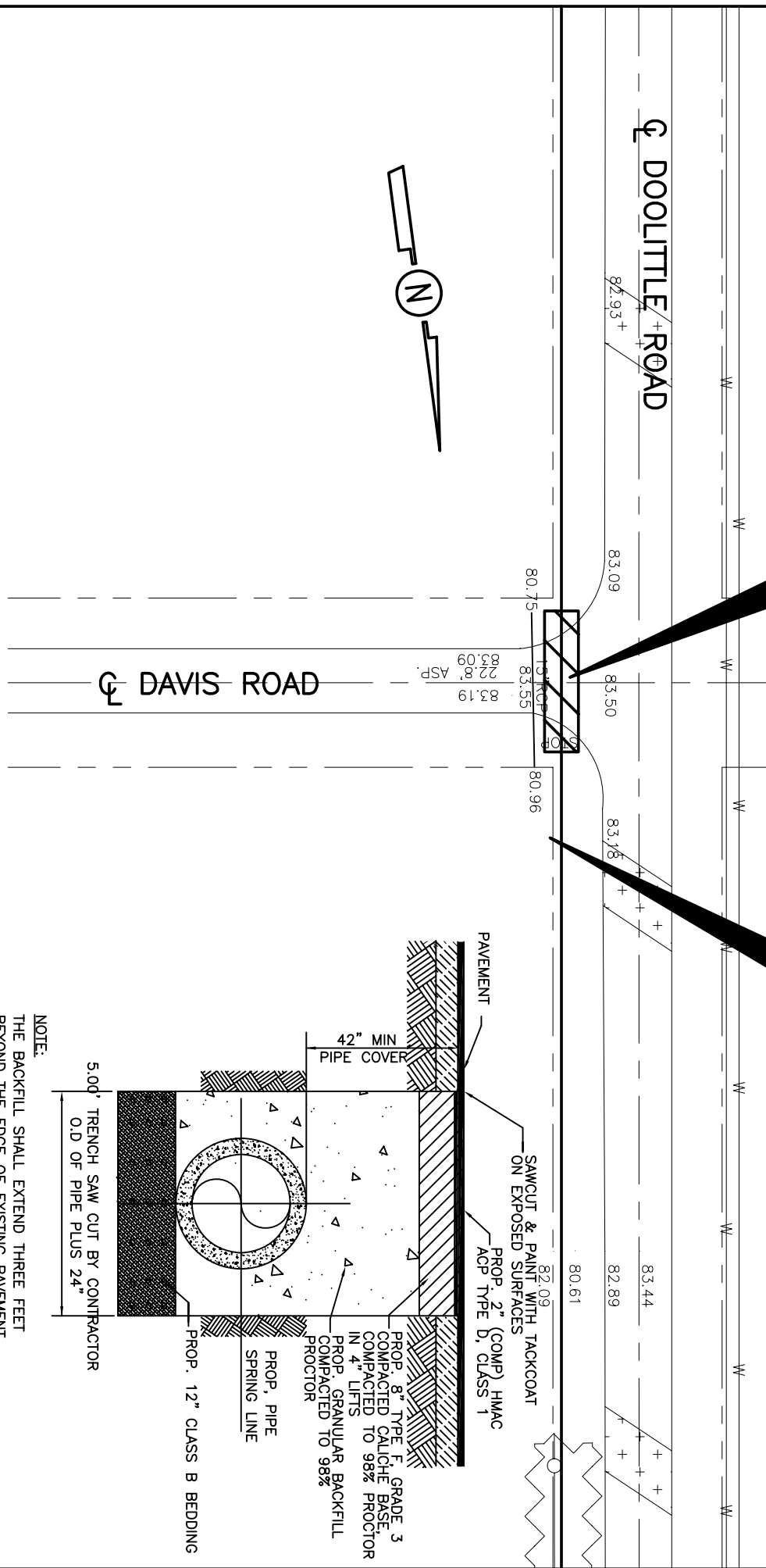


PROP. SAW CUT & REPAIR ASPHALT—25.0 L.F. 5.00' WIDE BY CONTRACTOR

PROP. 36" R.C.P. STORM SEWER 1,340.00 L.F. S=0.23%



NOTE:
THE BACKFILL SHALL EXTEND THREE FEET BEYOND THE EDGE OF EXISTING PAVEMENT.

SAW CUT TRENCH BACKFILL

NOT TO SCALE

SANTA GLORIA SUBDIVISION OFFSITE STORM SEWER DETAIL