

LEGEND

- ↑ - PROPOSED TRAFFIC
- - BENCH MARK
- ▨ - INDICATES EXISTING BRIDGE TO BE REMOVED

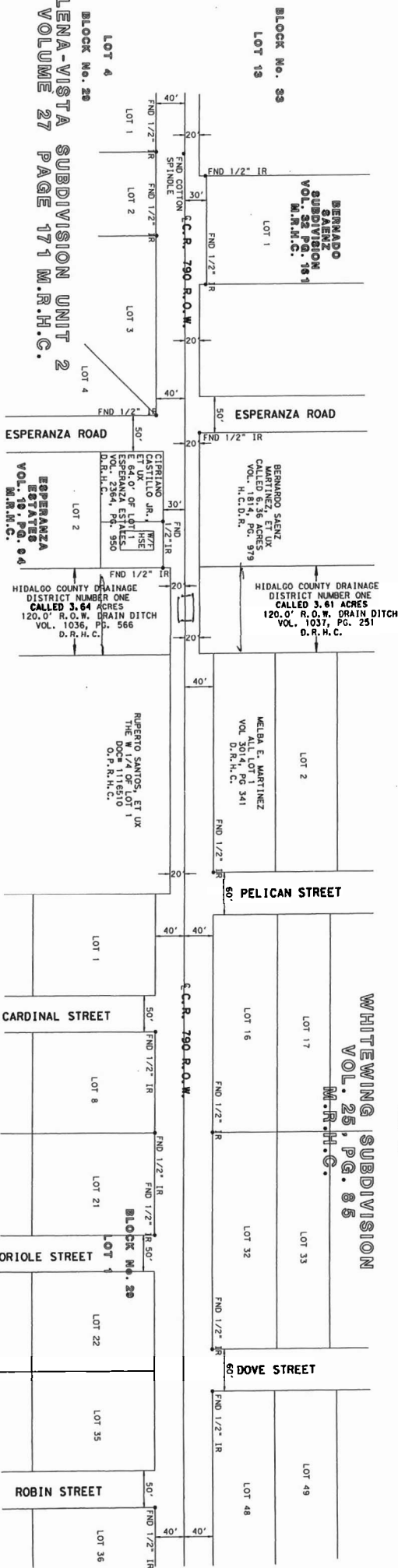
DATE	BY/REV	REVISION

TEXAS Department of Transportation
 2006
 Engineered by KBR Technical Services, Inc.
KBR
 HIDALGO COUNTY
 OFF-SYSTEM BRIDGE
 REPLACEMENTS
 EXHIBIT 1
 CR 790 (MOORE ROAD)

SHEET 1 OF 1
 DATE: 05-26-06
 SCALE: 1" = 50'
 PROJ. NO. STATE PROJECT NO. FEDERAL PROJECT NO. SHEET NO.
 6 BR 2005 (979) ETC 1
 STATE COUNTY COM. SECT. JOB HIGWAY
 TEXAS DIST. NO. HIDALGO 0921 02 131138 0790 005

ALAMO TRACT ALAMO LAND & SUGAR COMPANY VOL. 1, PG. 24, H.C.M.R.

BLOCK No. 34
LOT 18



ROADRUNNER SUBDIVISION PHASE II
VOLUME 26 PAGE 42 M.R.H.C.

BLOCK No. 28
PLENA-VISTA SUBDIVISION UNIT 2
VOLUME 27 PAGE 171 M.R.H.C.

