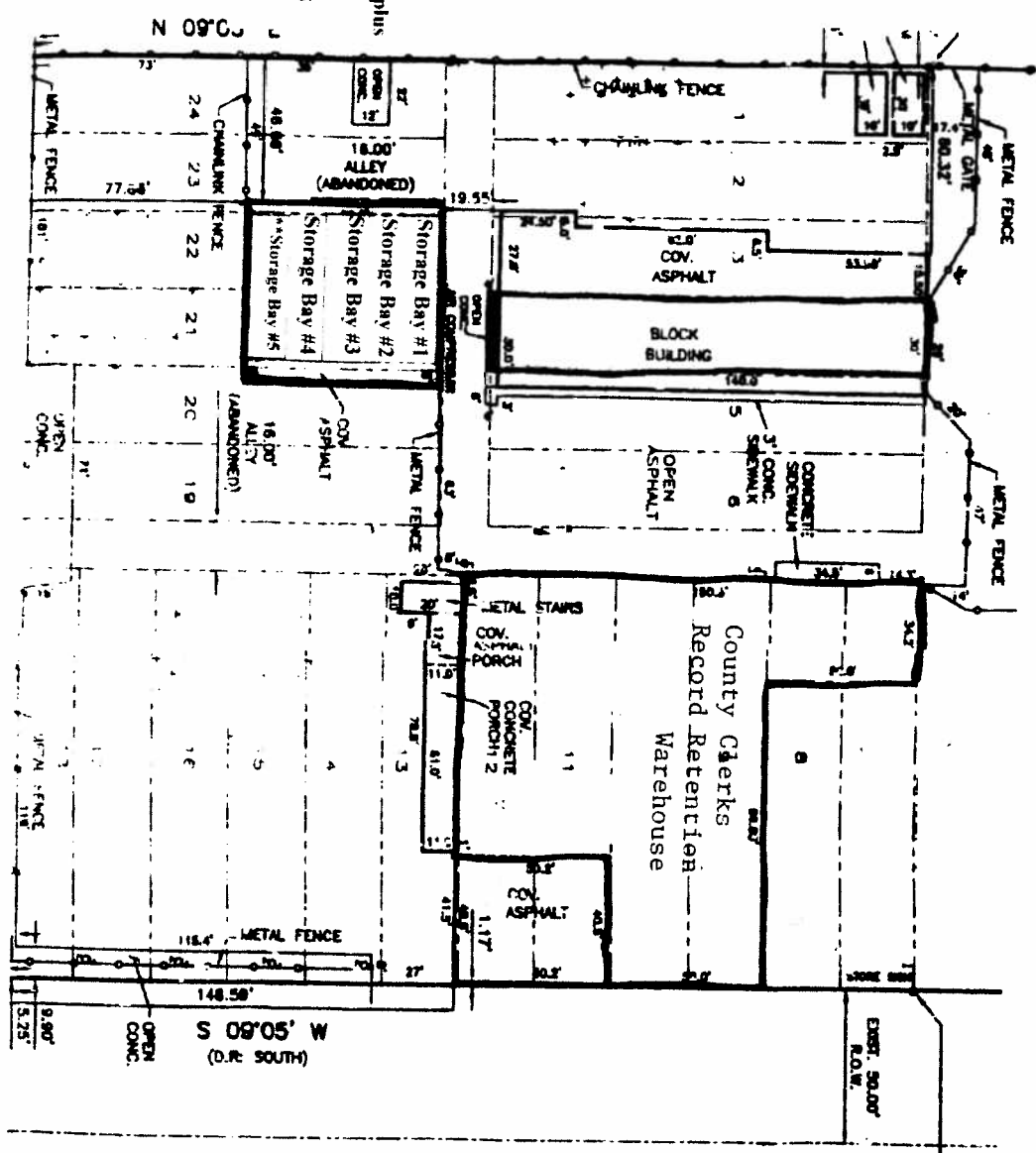


MADE "T" CUT
ON ALUMINUM BASE
OF ROBERTS CREV.
STONE, S&W
N.E. COR.
LOT 7
BLOCK 187

N. CLOSNR

EASEMENT RESERVED IN 1
RECORDED IN VOLUME 17
HARRIS COUNTY, TEXAS



* Purchasing Dept.
requesting Storage Bay
Area #1 and #2 for Surplus
Inventory purposes

** Storage Bay Area #5
Assigned to Emergency
Management

