



# Texas Department of Transportation

P.O. BOX 1717 • PHARR, TEXAS 78577-1717 • (956) 702-6100

January 24, 2008

Honorable Juan "J.D." Salinas  
County Judge, Hidalgo County  
P.O. Box 1356  
Edinburg, Texas 78540

RECEIVED  
FEB 01 2008  
COUNTY JUDGE

**RE: Removal of the Mile 15 ½ Bridge from TxDOT's Inventory  
Str. # AA02-44-001 over North Floodway Pilot Channel**


Honorable Judge Salinas;

Back in September 1998, the subject bridge project was funded for replacement under the Federal Bridge Rehabilitation and replacement program. However, at the time the County did not consider this structure a priority for their off-system transportation infrastructure and chose to use the funds to replace the bridge on Mile 12 N. Road (Str. # AA08-04-001) over the North Floodway Pilot Channel instead. This was done in accordance with our off-system bridge substitution criteria.

Since that time, the Mile 15 ½ bridge has remained closed to traffic and we are unaware of any plans by the County to replace it. As such, please note that we will be removing the subject bridge from our inventory listing as an active off-system bridge at the end of February 2008. If the County does have plans to replace and reopen the subject bridge, please advise us by February 15, 2008.

Should you have any questions or need additional information, please feel free to contact myself or Mr. Rex A. Costley, P.E., our District Bridge Engineer, at (956) 702-6100.

Sincerely,

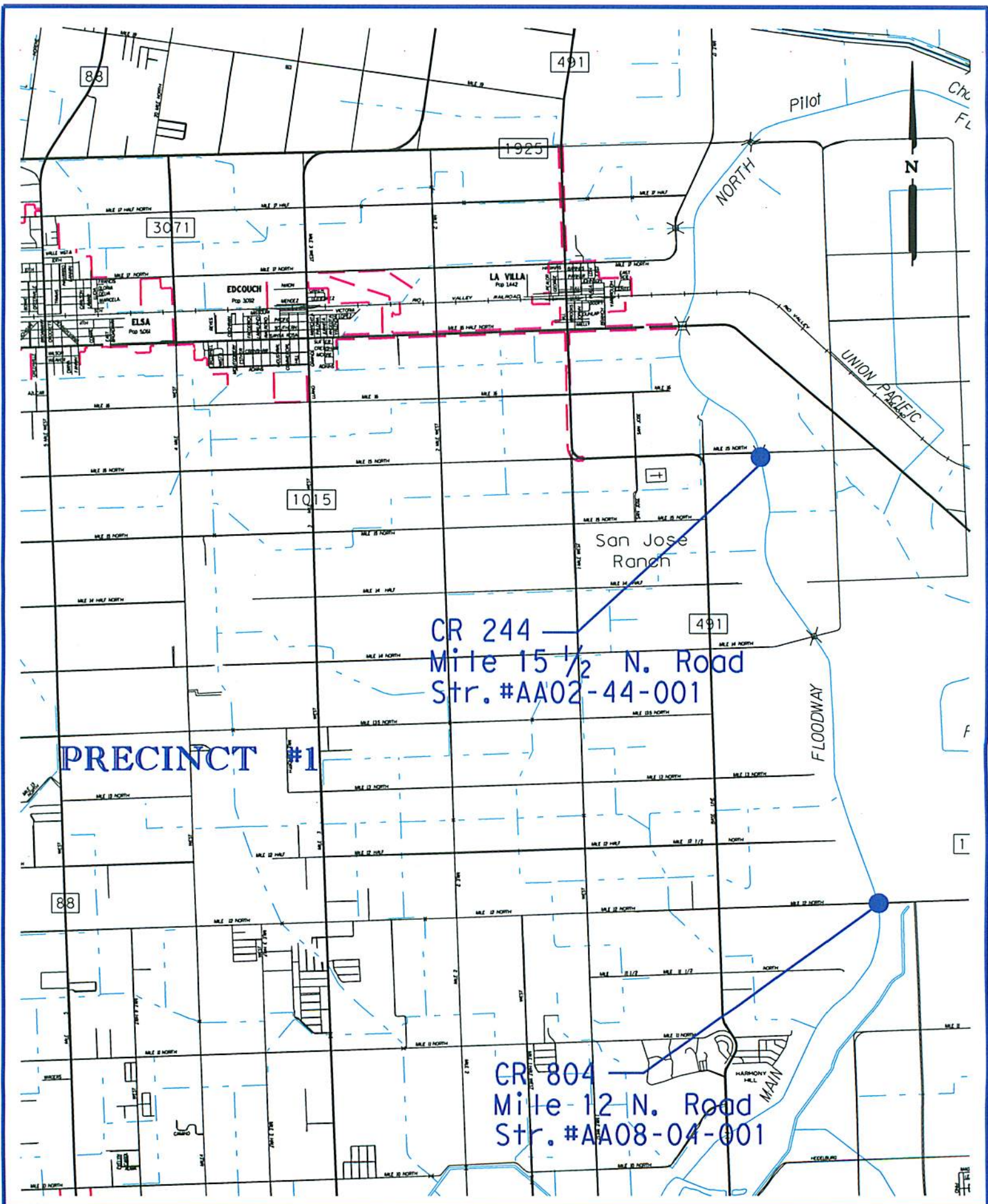


Mr. Mario R. Jorge, P. E.  
Pharr District Engineer

Enclosures

MJ:eg

cc: Honorable Sylvia Handy, County Commissioner Precinct #1  
Jody R. Ellington, P.E., Director of Transportation Planning and Development  
Rex A. Costley, P.E., District Bridge Engineer  
Hector Gonzalez, P. E., Pharr Area Engineer  
District File



CR 244  
Mile 15 1/2 N. Road  
Str. #AA02-44-001

PRECINCT #1

CR 804  
Mile 12 N. Road  
Str. #AA08-04-001

88

491

1925

3071

1015

491

88

1

NORTH

N

UNION PACIFIC

FLOODWAY

Pilot

EDCOUCH

ELSA

LA VILLA

San Jose  
Ranch

HARMONY  
HILL  
MAIN