

SCALE 1" = 200'

COUNTY OF HIDALGO
 GEORGE OF PLAT APPROVAL
 UNDER LOCAL GOVERNMENT CODE § 208.001(a)

WE, THE UNDERSIGNED CERTIFY THAT THIS PLAT OF LA JOYA I.S.D. MIDDLE SCHOOL NO. 7 WAS REVENUED AND APPROVED BY THE HIDALGO COUNTY COMMISSIONERS COURT ON _____, 2008.

HIDALGO COUNTY JUDGE _____ DATE _____

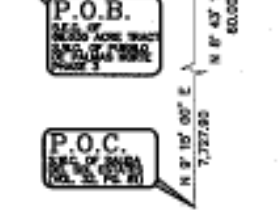
ATTEST: HIDALGO COUNTY CLERK _____ DATE _____

COUNTY CLERK'S RECORDING CERTIFICATE
 I, _____, COUNTY CLERK OF HIDALGO COUNTY, CERTIFY THAT THE PLAT BEARING THIS CERTIFICATE WAS FILED FOR RECORD AT _____ O'CLOCK _____ ON _____, 2008 AND WAS RECORDED IN BOOK _____ SHEETS _____

THE PLAT RECORDS OF HIDALGO COUNTY AT _____ O'CLOCK _____ ON _____, 2008.

HIDALGO COUNTY DRAINAGE DISTRICT NO. 1 HEREBY CERTIFIES THAT THE DRAINAGE PLANS FOR THIS SUBDIVISION COMPLY WITH THE MINIMUM STANDARDS OF THE DISTRICT ADOPTED UNDER THE TEXAS WATER CODE AS STATED. THE DISTRICT HAS NOT REVIEWED AND DOES NOT CERTIFY THAT THE DRAINAGE STRUCTURES DESCRIBED ARE APPROPRIATE FOR THE SPECIFIC SUBDIVISION, BASED ON GENERALLY ACCEPTED ENGINEERING CRITERIA. IT IS THE RESPONSIBILITY OF THE DEVELOPER OF THE SUBDIVISION AND ITS ENGINEER TO MAKE THESE DETERMINATIONS.

HIDALGO COUNTY DRAINAGE DISTRICT NO. 1
 BY _____



CURVE TABLE

LENGTH	ANGLES	TANGENT	CHORD
CI	245.24°	394.46'	105.30'
CP	177.62°	245.72'	96.36'
CS	179.82°	255.72'	135.79'
CA	164.49°	245.47'	85.47'

STRAIGHT CLINE

LENGTH	BEARING
1'	35.36°
2'	35.36°

PRELIMINARY SUBDIVISION PLAT OF LA JOYA I.S.D. MIDDLE SCHOOL NO. 7
 BEING A 69.635 ACRE TRACT OF LAND, MORE OR LESS, OUT OF A PORTION OF A CERTAIN 92.813 ACRE TRACT OUT OF SHARE 4, SCHUNIOR'S SUBDIVISION, OF PORCONES 73, 74, & 75, HIDALGO COUNTY, TEXAS, ACCORDING TO MAP OR RECORDS THEREOF RECORDED IN VOL. 2, PG. 23, MAP RECORDS OF HIDALGO COUNTY, TEXAS.

HIDALGO COUNTY GENERAL SUBDIVISION PLAT RULES

1. FLOOD ZONE DESIGNATION: FLOOD ZONE DESIGNATION SHALL BE "X" AND "Y".

2. SERVICE: FROM 1800 FEET ON MILE 7 ROAD (FM 2221) TO 400 FEET ON EAST SIDE OF MILE 7 ROAD (FM 2221).

3. GENERAL NOTE FOR SERVICE: THE CITY APPLICATION FOR CONSTRUCTION APPROVED BY THE PLANNING DEPARTMENT, HEALTH DEPARTMENT, AND FIRE MARSHAL, ARE REQUIRED PRIOR TO OCCUPANCY OF THE LOT.

4. MINIMUM FINISH FLOOR: MINIMUM FINISH FLOOR ELEVATION SHALL BE 10' ABOVE THE FINISH GRADE OF THE STREET OR 10' ABOVE THE FINISH GRADE OF THE DRAINAGE DITCH, WHICHEVER IS HIGHER. MINIMUM FINISH FLOOR ELEVATION SHALL BE 10' ABOVE THE FINISH GRADE OF THE STREET OR 10' ABOVE THE FINISH GRADE OF THE DRAINAGE DITCH, WHICHEVER IS HIGHER. MINIMUM FINISH FLOOR ELEVATION SHALL BE 10' ABOVE THE FINISH GRADE OF THE STREET OR 10' ABOVE THE FINISH GRADE OF THE DRAINAGE DITCH, WHICHEVER IS HIGHER.

5. DRAINAGE: DRAINAGE SHALL BE PROVIDED FOR ALL LOTS WITH A DRAINAGE DITCH OR DRAINAGE DITCHES. DRAINAGE SHALL BE PROVIDED FOR ALL LOTS WITH A DRAINAGE DITCH OR DRAINAGE DITCHES. DRAINAGE SHALL BE PROVIDED FOR ALL LOTS WITH A DRAINAGE DITCH OR DRAINAGE DITCHES.

6. DRAINAGE: DRAINAGE SHALL BE PROVIDED FOR ALL LOTS WITH A DRAINAGE DITCH OR DRAINAGE DITCHES. DRAINAGE SHALL BE PROVIDED FOR ALL LOTS WITH A DRAINAGE DITCH OR DRAINAGE DITCHES. DRAINAGE SHALL BE PROVIDED FOR ALL LOTS WITH A DRAINAGE DITCH OR DRAINAGE DITCHES.

7. DRAINAGE: DRAINAGE SHALL BE PROVIDED FOR ALL LOTS WITH A DRAINAGE DITCH OR DRAINAGE DITCHES. DRAINAGE SHALL BE PROVIDED FOR ALL LOTS WITH A DRAINAGE DITCH OR DRAINAGE DITCHES. DRAINAGE SHALL BE PROVIDED FOR ALL LOTS WITH A DRAINAGE DITCH OR DRAINAGE DITCHES.

8. DRAINAGE: DRAINAGE SHALL BE PROVIDED FOR ALL LOTS WITH A DRAINAGE DITCH OR DRAINAGE DITCHES. DRAINAGE SHALL BE PROVIDED FOR ALL LOTS WITH A DRAINAGE DITCH OR DRAINAGE DITCHES. DRAINAGE SHALL BE PROVIDED FOR ALL LOTS WITH A DRAINAGE DITCH OR DRAINAGE DITCHES.

9. DRAINAGE: DRAINAGE SHALL BE PROVIDED FOR ALL LOTS WITH A DRAINAGE DITCH OR DRAINAGE DITCHES. DRAINAGE SHALL BE PROVIDED FOR ALL LOTS WITH A DRAINAGE DITCH OR DRAINAGE DITCHES. DRAINAGE SHALL BE PROVIDED FOR ALL LOTS WITH A DRAINAGE DITCH OR DRAINAGE DITCHES.

10. DRAINAGE: DRAINAGE SHALL BE PROVIDED FOR ALL LOTS WITH A DRAINAGE DITCH OR DRAINAGE DITCHES. DRAINAGE SHALL BE PROVIDED FOR ALL LOTS WITH A DRAINAGE DITCH OR DRAINAGE DITCHES. DRAINAGE SHALL BE PROVIDED FOR ALL LOTS WITH A DRAINAGE DITCH OR DRAINAGE DITCHES.

11. DRAINAGE: DRAINAGE SHALL BE PROVIDED FOR ALL LOTS WITH A DRAINAGE DITCH OR DRAINAGE DITCHES. DRAINAGE SHALL BE PROVIDED FOR ALL LOTS WITH A DRAINAGE DITCH OR DRAINAGE DITCHES. DRAINAGE SHALL BE PROVIDED FOR ALL LOTS WITH A DRAINAGE DITCH OR DRAINAGE DITCHES.

12. DRAINAGE: DRAINAGE SHALL BE PROVIDED FOR ALL LOTS WITH A DRAINAGE DITCH OR DRAINAGE DITCHES. DRAINAGE SHALL BE PROVIDED FOR ALL LOTS WITH A DRAINAGE DITCH OR DRAINAGE DITCHES. DRAINAGE SHALL BE PROVIDED FOR ALL LOTS WITH A DRAINAGE DITCH OR DRAINAGE DITCHES.

13. DRAINAGE: DRAINAGE SHALL BE PROVIDED FOR ALL LOTS WITH A DRAINAGE DITCH OR DRAINAGE DITCHES. DRAINAGE SHALL BE PROVIDED FOR ALL LOTS WITH A DRAINAGE DITCH OR DRAINAGE DITCHES. DRAINAGE SHALL BE PROVIDED FOR ALL LOTS WITH A DRAINAGE DITCH OR DRAINAGE DITCHES.

14. DRAINAGE: DRAINAGE SHALL BE PROVIDED FOR ALL LOTS WITH A DRAINAGE DITCH OR DRAINAGE DITCHES. DRAINAGE SHALL BE PROVIDED FOR ALL LOTS WITH A DRAINAGE DITCH OR DRAINAGE DITCHES. DRAINAGE SHALL BE PROVIDED FOR ALL LOTS WITH A DRAINAGE DITCH OR DRAINAGE DITCHES.

15. DRAINAGE: DRAINAGE SHALL BE PROVIDED FOR ALL LOTS WITH A DRAINAGE DITCH OR DRAINAGE DITCHES. DRAINAGE SHALL BE PROVIDED FOR ALL LOTS WITH A DRAINAGE DITCH OR DRAINAGE DITCHES. DRAINAGE SHALL BE PROVIDED FOR ALL LOTS WITH A DRAINAGE DITCH OR DRAINAGE DITCHES.

16. DRAINAGE: DRAINAGE SHALL BE PROVIDED FOR ALL LOTS WITH A DRAINAGE DITCH OR DRAINAGE DITCHES. DRAINAGE SHALL BE PROVIDED FOR ALL LOTS WITH A DRAINAGE DITCH OR DRAINAGE DITCHES. DRAINAGE SHALL BE PROVIDED FOR ALL LOTS WITH A DRAINAGE DITCH OR DRAINAGE DITCHES.

17. DRAINAGE: DRAINAGE SHALL BE PROVIDED FOR ALL LOTS WITH A DRAINAGE DITCH OR DRAINAGE DITCHES. DRAINAGE SHALL BE PROVIDED FOR ALL LOTS WITH A DRAINAGE DITCH OR DRAINAGE DITCHES. DRAINAGE SHALL BE PROVIDED FOR ALL LOTS WITH A DRAINAGE DITCH OR DRAINAGE DITCHES.

18. DRAINAGE: DRAINAGE SHALL BE PROVIDED FOR ALL LOTS WITH A DRAINAGE DITCH OR DRAINAGE DITCHES. DRAINAGE SHALL BE PROVIDED FOR ALL LOTS WITH A DRAINAGE DITCH OR DRAINAGE DITCHES. DRAINAGE SHALL BE PROVIDED FOR ALL LOTS WITH A DRAINAGE DITCH OR DRAINAGE DITCHES.

19. DRAINAGE: DRAINAGE SHALL BE PROVIDED FOR ALL LOTS WITH A DRAINAGE DITCH OR DRAINAGE DITCHES. DRAINAGE SHALL BE PROVIDED FOR ALL LOTS WITH A DRAINAGE DITCH OR DRAINAGE DITCHES. DRAINAGE SHALL BE PROVIDED FOR ALL LOTS WITH A DRAINAGE DITCH OR DRAINAGE DITCHES.

20. DRAINAGE: DRAINAGE SHALL BE PROVIDED FOR ALL LOTS WITH A DRAINAGE DITCH OR DRAINAGE DITCHES. DRAINAGE SHALL BE PROVIDED FOR ALL LOTS WITH A DRAINAGE DITCH OR DRAINAGE DITCHES. DRAINAGE SHALL BE PROVIDED FOR ALL LOTS WITH A DRAINAGE DITCH OR DRAINAGE DITCHES.

STATE OF TEXAS
 COUNTY OF HIDALGO
 OWNER: LA JOYA INDEPENDENT SCHOOL DISTRICT
 AREA 1, BEHAVIOR SUPERINTENDENT
 P.O. BOX 1000
 LA JOYA, TEXAS 78000-1000

BEFORE ME, THE UNDERSIGNED AUTHORITY ON THIS DAY PERSONALLY APPEARED THE ABOVE NAMED AREA 1, BEHAVIOR SUPERINTENDENT, KNOWN TO ME BY THE PERSONS WHOSE NAMES I HAVE SUBSCRIBED TO THE FOREGOING INSTRUMENT, AND ACKNOWLEDGED TO ME THAT THEY EXECUTED THE SAME FOR THE PURPOSES AND CONSIDERATIONS THEREIN STATED.

GIVEN UNDER MY HAND AND SEAL OF OFFICE THIS _____ DAY OF _____, 2008.

STATE OF TEXAS
 COUNTY OF HIDALGO
 I, _____, BEHAVIOR SUPERINTENDENT, IN THE STATE OF TEXAS, DO HEREBY CERTIFY THAT THIS PLAT HAS BEEN GIVEN PROPER AND ADEQUATE ENGINEERING CONSIDERATION.

STATE OF TEXAS
 COUNTY OF HIDALGO
 I, _____, REGISTERED PROFESSIONAL LAND SURVEYOR IN THE STATE OF TEXAS, DO HEREBY CERTIFY THAT THE ABOVE PLAT AND DESCRIPTION OF LA JOYA I.S.D. MIDDLE SCHOOL NO. 7, WERE PREPARED FROM A SURVEY OF THE PROPERTY MADE UNDER MY SUPERVISION ON THE ORIGINAL.

HIDALGO COUNTY
 GEORGE OF PLAT APPROVAL

I, THE UNDERSIGNED CERTIFY THAT THIS PLAT OF LA JOYA I.S.D. MIDDLE SCHOOL NO. 7 WAS REVENUED AND APPROVED BY THE HIDALGO COUNTY HEALTH DEPARTMENT ON _____, 2008.

HIDALGO COUNTY HEALTH DEPARTMENT OFFICIAL _____ DATE _____

HIDALGO COUNTY
 GEORGE OF PLAT APPROVAL

I, THE UNDERSIGNED CERTIFY THAT THIS PLAT OF LA JOYA I.S.D. MIDDLE SCHOOL NO. 7 WAS REVENUED AND APPROVED BY THE HIDALGO COUNTY HEALTH DEPARTMENT ON _____, 2008.

HIDALGO COUNTY HEALTH DEPARTMENT OFFICIAL _____ DATE _____

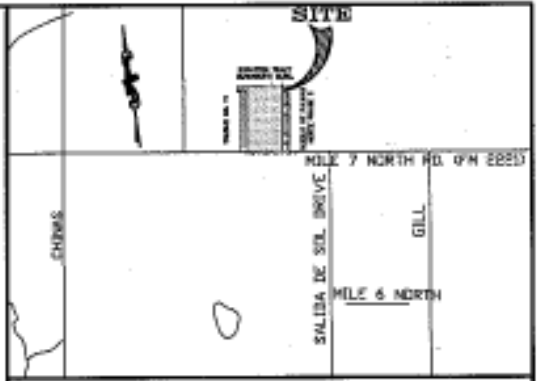
HIDALGO COUNTY ASSISTANT CHIEF INSPECTOR _____ DATE _____

HIDALGO COUNTY ASSISTANT CHIEF INSPECTOR _____ DATE _____

HIDALGO COUNTY ASSISTANT CHIEF INSPECTOR _____ DATE _____

HIDALGO COUNTY ASSISTANT CHIEF INSPECTOR _____ DATE _____

NAME	ADDRESS	CITY & ZIP	PHONE	FAX
OWNER: LA JOYA INDEPENDENT SCHOOL DISTRICT	208 N. LEO AVENUE	LA JOYA, TX 78000	(512) 380-3888	(512) 380-3888
ENGINEER: EDUARDO HINOJOSA	108 N. 10TH STREET	MISSION, TX 78149	(512) 381-0143	(512) 381-0274
SURVEYOR: JAMES SCHWARTZ	108 N. 10TH STREET	MISSION, TX 78149	(512) 381-0143	(512) 381-0274



LOCATION MAP SCALE: 1" = 1000'

PREPARED BY: HINOJOSA ENGINEERING, INC.
 108 N. 10TH STREET
 MISSION, TEXAS 78149
 DATE PREPARED: JANUARY 21, 2008
 DATE SURVEYED: NOVEMBER 15, 2005 PROJECT NO. 05-221

SUBDIVISION PLAT OF LA JOYA I.S.D. MIDDLE SCHOOL NO. 7
 BEING A 69.635 ACRE TRACT OF LAND, MORE OR LESS, OUT OF A PORTION OF A CERTAIN 92.813 ACRE TRACT OUT OF SHARE 4, SCHUNIOR'S SUBDIVISION, OF PORCONES 73, 74, & 75, HIDALGO COUNTY, TEXAS, ACCORDING TO MAP OR RECORDS THEREOF RECORDED IN VOL. 2, PG. 23, MAP RECORDS OF HIDALGO COUNTY, TEXAS.

PLAT SHEET 1 OF 2

BEING A 69.635 ACRE TRACT OF LAND, MORE OR LESS, OUT OF A PORTION OF A CERTAIN 92.813 ACRE TRACT OUT OF SHARE 4, SCHUNIOR'S SUBDIVISION, OF PORCONES 73, 74, & 75, HIDALGO COUNTY, TEXAS, ACCORDING TO MAP OR RECORDS THEREOF RECORDED IN VOL. 2, PG. 23, MAP RECORDS OF HIDALGO COUNTY, TEXAS.

BEING A 69.635 ACRE TRACT OF LAND, MORE OR LESS, OUT OF A PORTION OF A CERTAIN 92.813 ACRE TRACT OUT OF SHARE 4, SCHUNIOR'S SUBDIVISION, OF PORCONES 73, 74, & 75, HIDALGO COUNTY, TEXAS, ACCORDING TO MAP OR RECORDS THEREOF RECORDED IN VOL. 2, PG. 23, MAP RECORDS OF HIDALGO COUNTY, TEXAS.

BEING A 69.635 ACRE TRACT OF LAND, MORE OR LESS, OUT OF A PORTION OF A CERTAIN 92.813 ACRE TRACT OUT OF SHARE 4, SCHUNIOR'S SUBDIVISION, OF PORCONES 73, 74, & 75, HIDALGO COUNTY, TEXAS, ACCORDING TO MAP OR RECORDS THEREOF RECORDED IN VOL. 2, PG. 23, MAP RECORDS OF HIDALGO COUNTY, TEXAS.

BEING A 69.635 ACRE TRACT OF LAND, MORE OR LESS, OUT OF A PORTION OF A CERTAIN 92.813 ACRE TRACT OUT OF SHARE 4, SCHUNIOR'S SUBDIVISION, OF PORCONES 73, 74, & 75, HIDALGO COUNTY, TEXAS, ACCORDING TO MAP OR RECORDS THEREOF RECORDED IN VOL. 2, PG. 23, MAP RECORDS OF HIDALGO COUNTY, TEXAS.

BEING A 69.635 ACRE TRACT OF LAND, MORE OR LESS, OUT OF A PORTION OF A CERTAIN 92.813 ACRE TRACT OUT OF SHARE 4, SCHUNIOR'S SUBDIVISION, OF PORCONES 73, 74, & 75, HIDALGO COUNTY, TEXAS, ACCORDING TO MAP OR RECORDS THEREOF RECORDED IN VOL. 2, PG. 23, MAP RECORDS OF HIDALGO COUNTY, TEXAS.

BEING A 69.635 ACRE TRACT OF LAND, MORE OR LESS, OUT OF A PORTION OF A CERTAIN 92.813 ACRE TRACT OUT OF SHARE 4, SCHUNIOR'S SUBDIVISION, OF PORCONES 73, 74, & 75, HIDALGO COUNTY, TEXAS, ACCORDING TO MAP OR RECORDS THEREOF RECORDED IN VOL. 2, PG. 23, MAP RECORDS OF HIDALGO COUNTY, TEXAS.

BEING A 69.635 ACRE TRACT OF LAND, MORE OR LESS, OUT OF A PORTION OF A CERTAIN 92.813 ACRE TRACT OUT OF SHARE 4, SCHUNIOR'S SUBDIVISION, OF PORCONES 73, 74, & 75, HIDALGO COUNTY, TEXAS, ACCORDING TO MAP OR RECORDS THEREOF RECORDED IN VOL. 2, PG. 23, MAP RECORDS OF HIDALGO COUNTY, TEXAS.

BEING A 69.635 ACRE TRACT OF LAND, MORE OR LESS, OUT OF A PORTION OF A CERTAIN 92.813 ACRE TRACT OUT OF SHARE 4, SCHUNIOR'S SUBDIVISION, OF PORCONES 73, 74, & 75, HIDALGO COUNTY, TEXAS, ACCORDING TO MAP OR RECORDS THEREOF RECORDED IN VOL. 2, PG. 23, MAP RECORDS OF HIDALGO COUNTY, TEXAS.

BEING A 69.635 ACRE TRACT OF LAND, MORE OR LESS, OUT OF A PORTION OF A CERTAIN 92.813 ACRE TRACT OUT OF SHARE 4, SCHUNIOR'S SUBDIVISION, OF PORCONES 73, 74, & 75, HIDALGO COUNTY, TEXAS, ACCORDING TO MAP OR RECORDS THEREOF RECORDED IN VOL. 2, PG. 23, MAP RECORDS OF HIDALGO COUNTY, TEXAS.

BEING A 69.635 ACRE TRACT OF LAND, MORE OR LESS, OUT OF A PORTION OF A CERTAIN 92.813 ACRE TRACT OUT OF SHARE 4, SCHUNIOR'S SUBDIVISION, OF PORCONES 73, 74, & 75, HIDALGO COUNTY, TEXAS, ACCORDING TO MAP OR RECORDS THEREOF RECORDED IN VOL. 2, PG. 23, MAP RECORDS OF HIDALGO COUNTY, TEXAS.

NO.	SHEET	REVISION	DATE	APPROVED
1	1			
2	1			