

AIA® Document G710™ - 1992

Architect's Supplemental Instructions

PROJECT (Name and address):
Construction of New Offices for
Hidalgo County Pct. 4
Edinburg, Texas

**ARCHITECT'S SUPPLEMENTAL
INSTRUCTION NO:** 001

OWNER:

ARCHITECT:

CONSULTANT:

CONTRACTOR:

FIELD:

OTHER:

OWNER (Name and address):
Hidalgo County

DATE OF ISSUANCE: March 14, 2008

CONTRACT FOR: General Construction

**FROM ARCHITECT (Name and
address):**
Reynaldo Vargas, Architect, Inc. dba
V.A Architecture
2029 Industrial Drive, McAllen,
Texas 78504

CONTRACT DATE: August 15, 2007

**TO CONTRACTOR (Name and
address):**

ARCHITECT'S PROJECT NUMBER: 07-1002
Contract No. C-07-0332C-09-25
PO # 592783

Carlo R. Cantú dba CRC Design
Consultants.
2016 S. 45th Street
McAllen, Texas 7850

The Work shall be carried out in accordance with the following supplemental instructions issued in accordance with the Contract Documents without change in Contract Sum or Contract Time. Proceeding with the Work in accordance with these instructions indicates your acknowledgment that there will be no change in the Contract Sum or Contract Time.

DESCRIPTION:

PROVIDE ALL LABOR, MATERIALS AND EQUIPMENT NECESSARY FOR THE FOLLOWING:

- 1&2. "Sweeping 90's" all locations in lieu of standard installed "90's" \$3,850.00
 3. Electric Rough In for Strike (by others) at door number 1 \$1,250.00
 4. Relocate quad receptacle to 80" A.F.F. \$150.00
 5. Relocating Door frames as per attached Dwg. Including all electrical modifications already in place. \$2,850.00
 6. Electric Rough In for Strike (others) at door number 28. Sheetrock patch.
 7. New Accent Colors as per Precinct NO. 4 Employees \$475.00
 8. New Hollow Metal Window with wire glass employee office. \$575.00
- TOTAL \$10,000.00**

ORIGINAL ALLOWANCE/ CONTINGENCY AMOUNT	NET CHANGE TO AMT. BY PREVIOUS ASI's	BALANCE PRIOR TO THIS ASI	INCREASE/ DECREASE OF AMT. BY THIS ASI	NEW BALANCE
Betterment	(\$10,000.00)	\$0.00	\$10,000.00	(\$0.00)
HVAC	(\$2,000.00)	\$0.00	\$0.00	(\$2,000.00)

AIA Document G710™ - 1992. Copyright © 1980 and 1992 by The American Institute of Architects. All rights reserved. WARNING: This AIA® Document is protected by U.S. Copyright Law and International Treaties. Unauthorized reproduction or distribution of this AIA® Document, or any portion of it, may result in severe civil and criminal penalties, and will be prosecuted to the maximum extent possible under the law. This document was produced by AIA software at 10:55:10 on 04/01/2008 under Order No.1000316024_1 which expires on 3/12/2008, and is not for resale.

(1418080684)

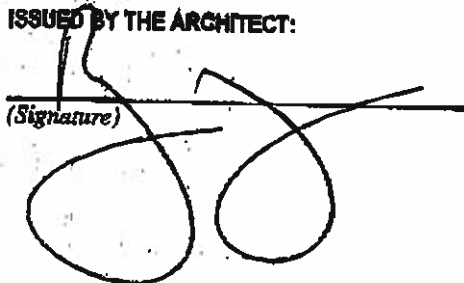
Plumbing	(\$2,000.00)	\$0.00	(\$2,000.00)	\$0.00	(\$2,000.00)
Electrical	(\$2,000.00)	\$0.00	(\$2,000.00)	\$0.00	(\$2,000.00)
Structural	(\$2,000.00)	\$0.00	(\$2,000.00)	\$0.00	(\$2,000.00)
Lawn Sprinkler	(\$5,000.00)	\$0.00	(\$5,000.00)	\$0.00	(\$5,000.00)
TOTALS	(\$23,000.00)	\$0.00	(\$23,000.00)	\$0.00	(\$13,000.00)

ATTACHMENTS:

(Here insert listing of documents that support description.)

1. Proposal Request #2 dated 1/18/08 (2 pp) + 8 1/2" x 11" dwgs" Electrical Power Plan and MEP Partial Site Plan
2. CRC Design Consultants response to PR#2 dated 3/4/08 (1 p)

ISSUED BY THE ARCHITECT:


 (Signature)

Reynaldo Vargas, Architect/President, A.I.A.
 (Printed name and title)



CRC Design Consultants

2016 S. 45th St.
McAllen, TX 78503
096) 431-3274
Fax (956) 664-2359

Proposal Request # 2
Date: 2-4-08

Proposal Request No.2

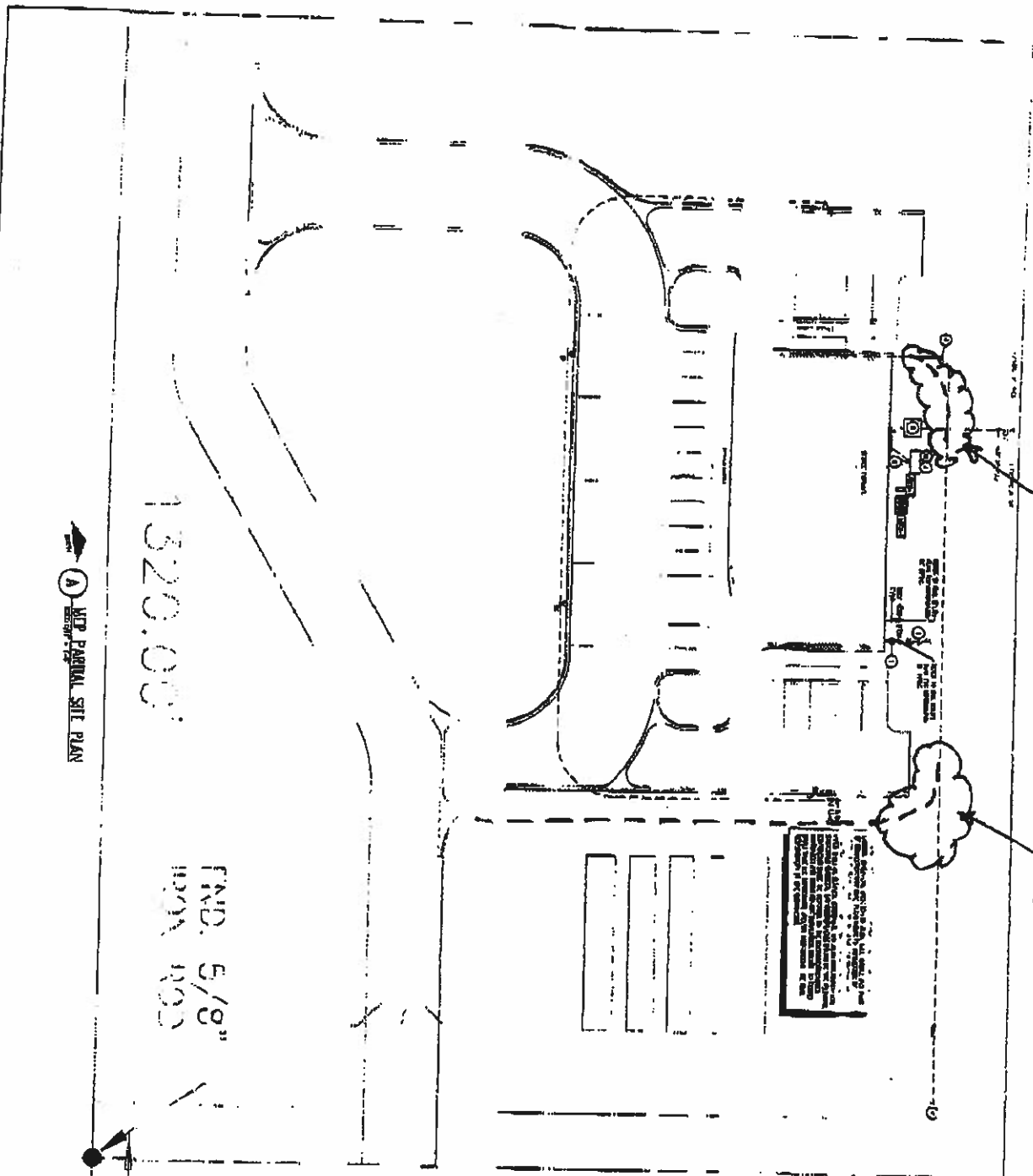
Submitted To: V-A Architecture

Mail To: V-A Architecture
2029 Industrial Drive
McAllen, Texas 78504
Attn: Mr. Reynaldo Vargas, AIA

ALL Equipment, Material, & Labor to perform
Proposal Request No. 2

Item	Description	Unit Price	Total
1&2	"Sweeping 90's" all locations in lieu of standard installed 90's	\$ 3,850	\$ 3,850
3	Electric Rough In for Strike (by Others) at door number 1	\$ 1,250	\$ 1,250
4	Relocate quad receptacle to 80" A.F.F.	\$ 150	\$ 150
5	Relocating Door Frames as per attached Dwg. including all electrical modifications already in place.	\$ 2,850	\$ 2,850
6	Electric Rough In for Strike (by others) at door number 28. Sheetrock patch.	\$ 850	\$ 850
7	New Accent Colors as per Precinct No. 4 Employees.	\$ 475	\$ 475
8	New Hollow Metal Window with wire glass employee office	\$ 575	\$ 575
Subtotal			\$ 10,000
Total Amount			\$ 10,000
Accepted Amount			

■■■■



MEP PARIAL SITE PLAN

1320.00'

FND. 5/8"
100'x 100'

01-18-08
P.R. #2
07-1002
MEP SOLUTIONS

MEP-03



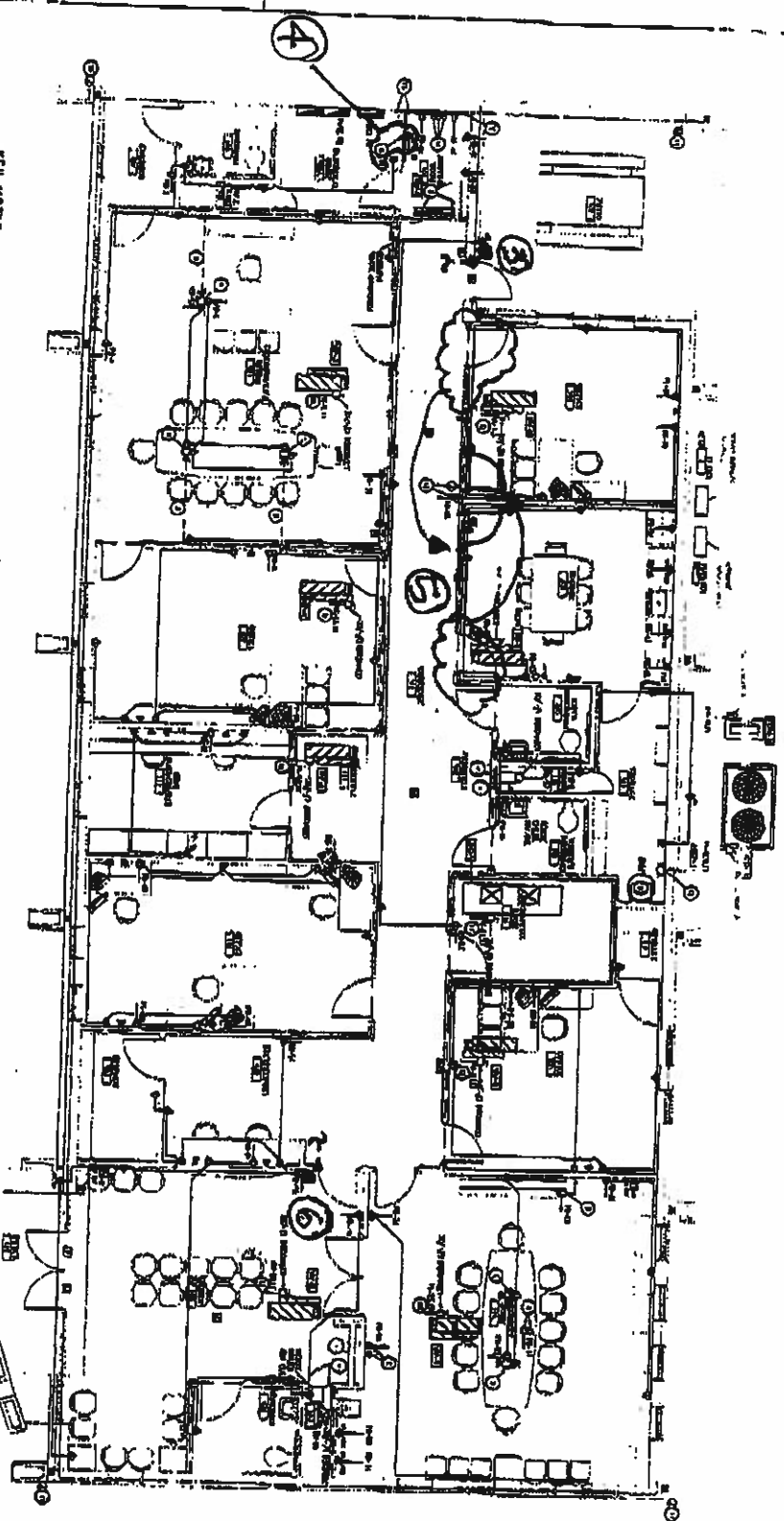
V-A Architecture

CONSTRUCTION OF
NEW OFFICE
FOR
HOLCOM COUNTY BLDG
CONTRACT

KEY NOTES:
1. SEE PLAN FOR ALL DIMENSIONS AND NOTES.
2. ALL WORK SHALL BE IN ACCORDANCE WITH THE LATEST EDITIONS OF THE MICHIGAN DEPARTMENT OF TRANSPORTATION (MDOT) STANDARD SPECIFICATIONS FOR HIGHWAY CONSTRUCTION.
3. ALL UTILITIES SHALL BE DEPTH MARKED AND LOCATED PRIOR TO CONSTRUCTION.
4. ALL UTILITIES SHALL BE PROTECTED AND MAINTAINED THROUGHOUT CONSTRUCTION.
5. ALL UTILITIES SHALL BE REPAIRED OR REPLACED AS NECESSARY.
6. ALL UTILITIES SHALL BE TESTED AND APPROVED PRIOR TO CONSTRUCTION.
7. ALL UTILITIES SHALL BE MAINTAINED THROUGHOUT CONSTRUCTION.

- KEY NOTES:**
1. ALL WORK SHALL BE IN ACCORDANCE WITH THE 2000 INTERNATIONAL ELECTRIC CODE (IEC) AND THE 2000 INTERNATIONAL CODE OF ELECTRICAL SYMBOLS (IECS).
 2. ALL WORK SHALL BE IN ACCORDANCE WITH THE 2000 NATIONAL ELECTRICAL SAFETY CODE (NEC).
 3. ALL WORK SHALL BE IN ACCORDANCE WITH THE 2000 NATIONAL FIRE ALARM AND SIGNALING CODE (NFPA).
 4. ALL WORK SHALL BE IN ACCORDANCE WITH THE 2000 NATIONAL ELECTRICAL SAFETY CODE (NEC) AND THE 2000 NATIONAL FIRE ALARM AND SIGNALING CODE (NFPA).
 5. ALL WORK SHALL BE IN ACCORDANCE WITH THE 2000 NATIONAL ELECTRICAL SAFETY CODE (NEC) AND THE 2000 NATIONAL FIRE ALARM AND SIGNALING CODE (NFPA).
 6. ALL WORK SHALL BE IN ACCORDANCE WITH THE 2000 NATIONAL ELECTRICAL SAFETY CODE (NEC) AND THE 2000 NATIONAL FIRE ALARM AND SIGNALING CODE (NFPA).
 7. ALL WORK SHALL BE IN ACCORDANCE WITH THE 2000 NATIONAL ELECTRICAL SAFETY CODE (NEC) AND THE 2000 NATIONAL FIRE ALARM AND SIGNALING CODE (NFPA).
 8. ALL WORK SHALL BE IN ACCORDANCE WITH THE 2000 NATIONAL ELECTRICAL SAFETY CODE (NEC) AND THE 2000 NATIONAL FIRE ALARM AND SIGNALING CODE (NFPA).
 9. ALL WORK SHALL BE IN ACCORDANCE WITH THE 2000 NATIONAL ELECTRICAL SAFETY CODE (NEC) AND THE 2000 NATIONAL FIRE ALARM AND SIGNALING CODE (NFPA).
 10. ALL WORK SHALL BE IN ACCORDANCE WITH THE 2000 NATIONAL ELECTRICAL SAFETY CODE (NEC) AND THE 2000 NATIONAL FIRE ALARM AND SIGNALING CODE (NFPA).
 11. ALL WORK SHALL BE IN ACCORDANCE WITH THE 2000 NATIONAL ELECTRICAL SAFETY CODE (NEC) AND THE 2000 NATIONAL FIRE ALARM AND SIGNALING CODE (NFPA).
 12. ALL WORK SHALL BE IN ACCORDANCE WITH THE 2000 NATIONAL ELECTRICAL SAFETY CODE (NEC) AND THE 2000 NATIONAL FIRE ALARM AND SIGNALING CODE (NFPA).
 13. ALL WORK SHALL BE IN ACCORDANCE WITH THE 2000 NATIONAL ELECTRICAL SAFETY CODE (NEC) AND THE 2000 NATIONAL FIRE ALARM AND SIGNALING CODE (NFPA).
 14. ALL WORK SHALL BE IN ACCORDANCE WITH THE 2000 NATIONAL ELECTRICAL SAFETY CODE (NEC) AND THE 2000 NATIONAL FIRE ALARM AND SIGNALING CODE (NFPA).
 15. ALL WORK SHALL BE IN ACCORDANCE WITH THE 2000 NATIONAL ELECTRICAL SAFETY CODE (NEC) AND THE 2000 NATIONAL FIRE ALARM AND SIGNALING CODE (NFPA).
 16. ALL WORK SHALL BE IN ACCORDANCE WITH THE 2000 NATIONAL ELECTRICAL SAFETY CODE (NEC) AND THE 2000 NATIONAL FIRE ALARM AND SIGNALING CODE (NFPA).
 17. ALL WORK SHALL BE IN ACCORDANCE WITH THE 2000 NATIONAL ELECTRICAL SAFETY CODE (NEC) AND THE 2000 NATIONAL FIRE ALARM AND SIGNALING CODE (NFPA).
 18. ALL WORK SHALL BE IN ACCORDANCE WITH THE 2000 NATIONAL ELECTRICAL SAFETY CODE (NEC) AND THE 2000 NATIONAL FIRE ALARM AND SIGNALING CODE (NFPA).
 19. ALL WORK SHALL BE IN ACCORDANCE WITH THE 2000 NATIONAL ELECTRICAL SAFETY CODE (NEC) AND THE 2000 NATIONAL FIRE ALARM AND SIGNALING CODE (NFPA).
 20. ALL WORK SHALL BE IN ACCORDANCE WITH THE 2000 NATIONAL ELECTRICAL SAFETY CODE (NEC) AND THE 2000 NATIONAL FIRE ALARM AND SIGNALING CODE (NFPA).

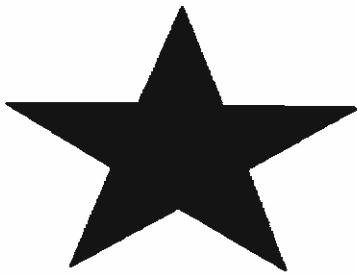
GENERAL POWER PLAN



GENERAL NOTES:

01-18-08
P.R.# 2
07-1002
MEP SOLUTIONS
ARCHITECTS

E-02		<p>V.A. Architecture ARCHITECTS</p>	<p>CONSTRUCTION OF NEW OFFICES 10400 COUNTY PREMISE 4 EDINBURG, TEXAS</p>	<p>V.A. Architecture</p>
------	--	--	--	--------------------------



HIDALGO COUNTY PRECINCT #4

**COMMISSIONER OSCAR L. GARZA JR.
1102 N. DOOLITTLE ROAD
EDINBURG, TEXAS 78541**

OFFICE (956) 383-3112

FAX (956) 381-5905

FAX TRANSMITTAL

TO: **Rocio Villarreal**
Hidalgo County Purchasing Department

FAX NO. (956)-

NO. OF PAGES: 9 (INCLUDING COVER PAGE)

FROM: **RUMALDO MUNOZ JR.**
ACCTS. PAYABLE CLERK

DATE: 5/20/2008

TIME: 11:00 AM. / P.M.

COMMENTS: **Please place on the next CC Court.**

Any ? call me Thanks Rumaldo Munoz Jr.

Confidentiality Notice

This facsimile transmission (and/or the document accompanying it) may contain confidential information belonging to the sender. The information is intended only for the use of the individual of entity named above. If you are not the intended recipient, you are hereby notified that any disclosure, copying, distribution or the taking of any action in reliance on the contents of this information is strictly prohibited. If you have received this information in error, please notify us immediately by collect telephone call to arrange for the return of these documents.

COUNTY of HIDALGO

OSCAR L. GARZA, JR.

1102 N. DOOLITTLE RD.

EDINBURG, TEXAS 78541

OFFICE: (956) 383-3112

FAX: (956) 381-5905



COUNTY COMMISSIONER, PCT. No. 4

MEMO

DATE: MAY 20, 2008
TO: HIDALGO COUNTY PURCHASING DEPARTMENT
C/O ROCIO VILLARREAL, CPPB CONTRACTS MANAGER
FROM: HIDALGO COUNTY PRECINCT #4 *Oscar L. Garza, Jr.*
REF: ARCHITECT'S SUPPLEMENTAL INSTRUCTIONS
ACCT. #: 8-1301-419-40-124-034-0-720
C-07-033-04-17

HIDALGO COUNTY PCT. #4 IS HEREBY REQUESTING THAT YOUR DEPARTMENT PLEASE PLACE THE FOLLOWING ARCHITECT'S SUPPLEMENTAL INSTRUCTIONS: #001 IN THE AMOUNT OF \$10,000.00 FOR VA ARCHITECTURE ON THE NEXT COMMISSIONERS' COURT FOR APPROVAL.

SHOULD YOU HAVE ANY QUESTIONS, PLEASE FEEL FREE TO CONTACT MY OFFICE, THANK YOU.

cc:

COUNTY FILES