

HIDALGO COUNTY

”PAVING IMPROVEMENTS (CURB-GUTTER-SIDEWALKS- GREEN AREAS) AT 201-217 N. CLOSNER, EDINBURG, TX.”

BID No. 2008-111A-07-02-MSS

2008

COUNTY COMMISSIONER'S COURT

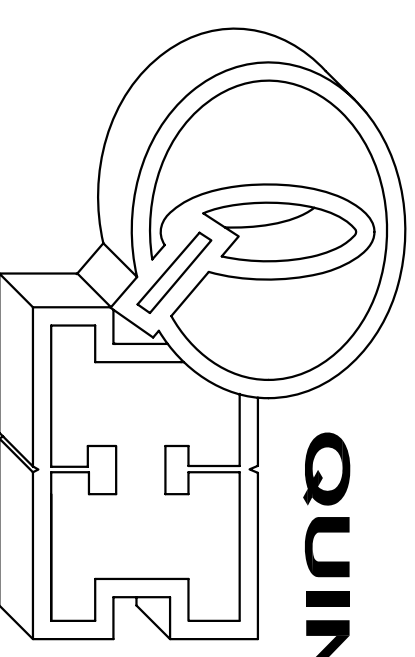
HON. JUAN D. SALINAS, III.....COUNTY JUDGE
 SYLVIA HANDY COMMISSIONER PRECINCT 1
 HECTOR "TITO" PALACIOS COMMISSIONER PRECINCT 2
 JOE M. FLORES COMMISSIONER PRECINCT 3
 OSCAR L. GARZA, JR. COMMISSIONER PRECINCT 4



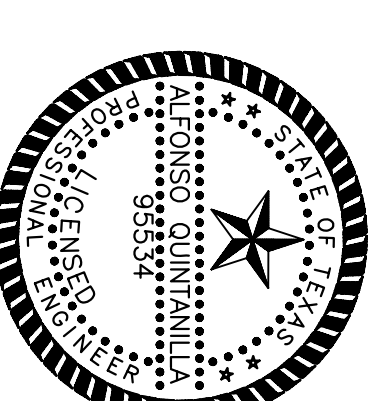
LOCATION MAP

SCALE 1" = 1000'

QUINTANILLA, HEADLEY AND ASSOCIATES, INC.



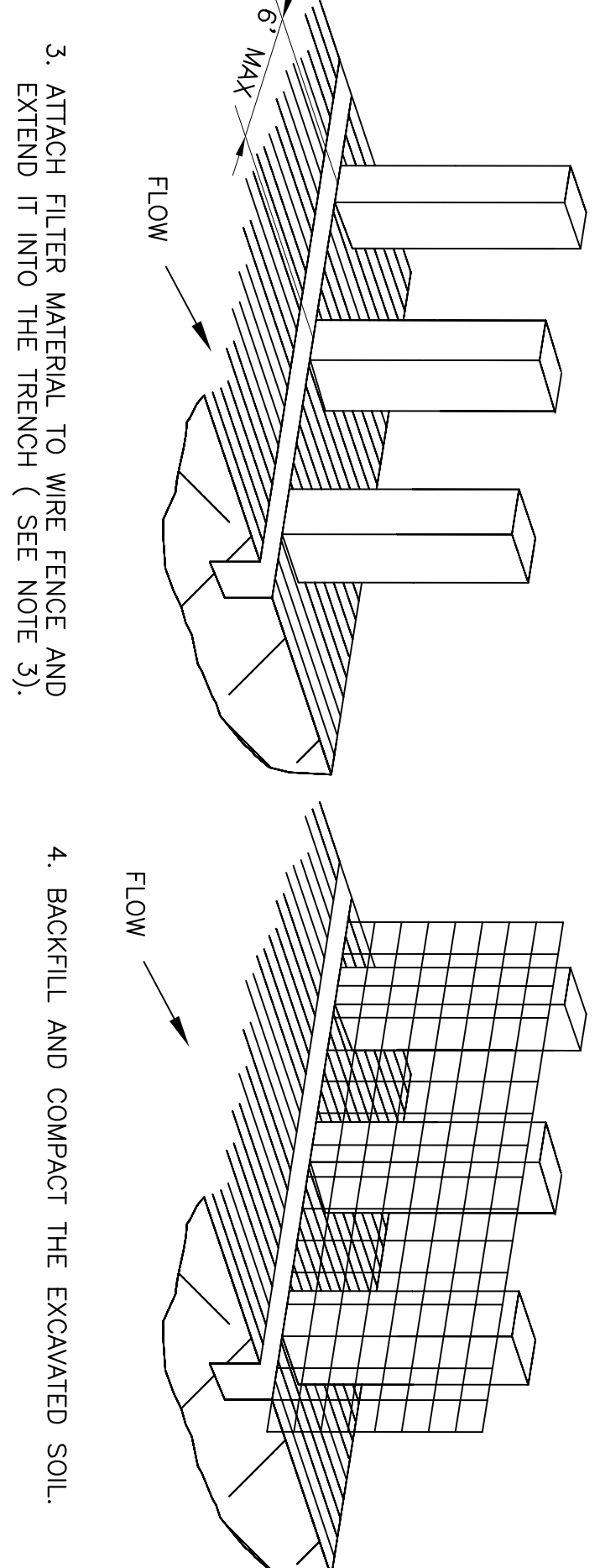
CONSULTING ENGINEERS • LAND SURVEYORS
 124 E. STUBBS ST. PHONE 956-381-6480
 EDINBURG, TEXAS 78539 FAX 956-381-0527



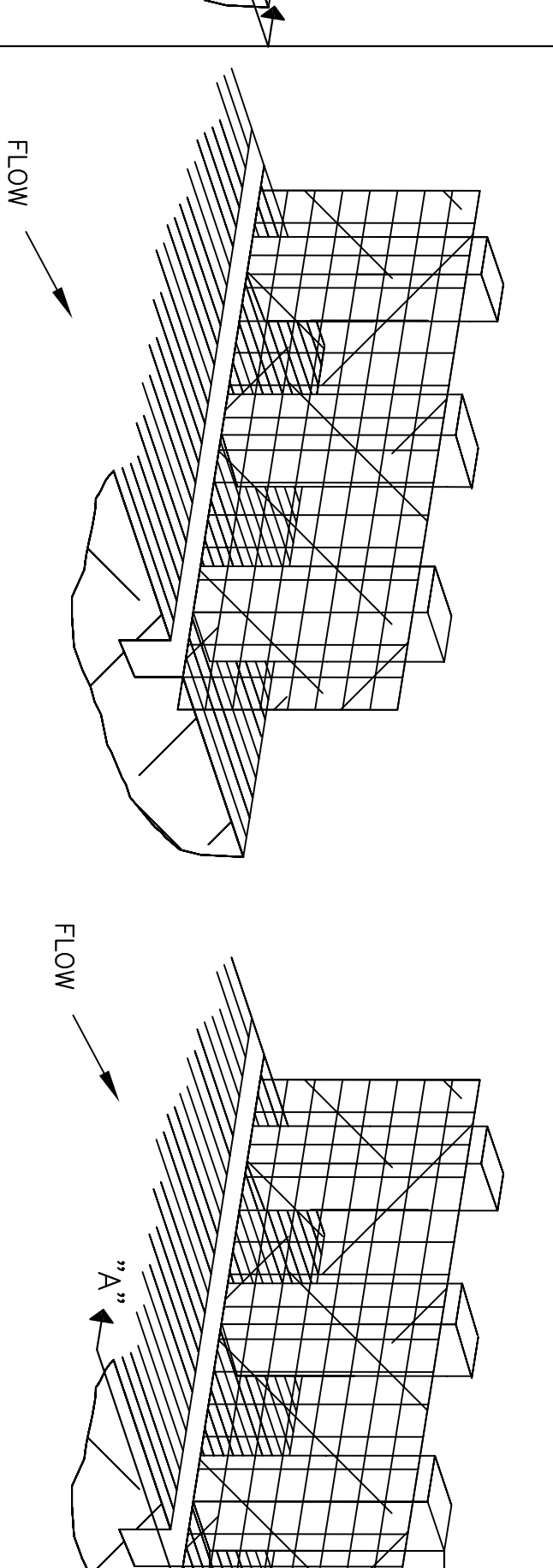
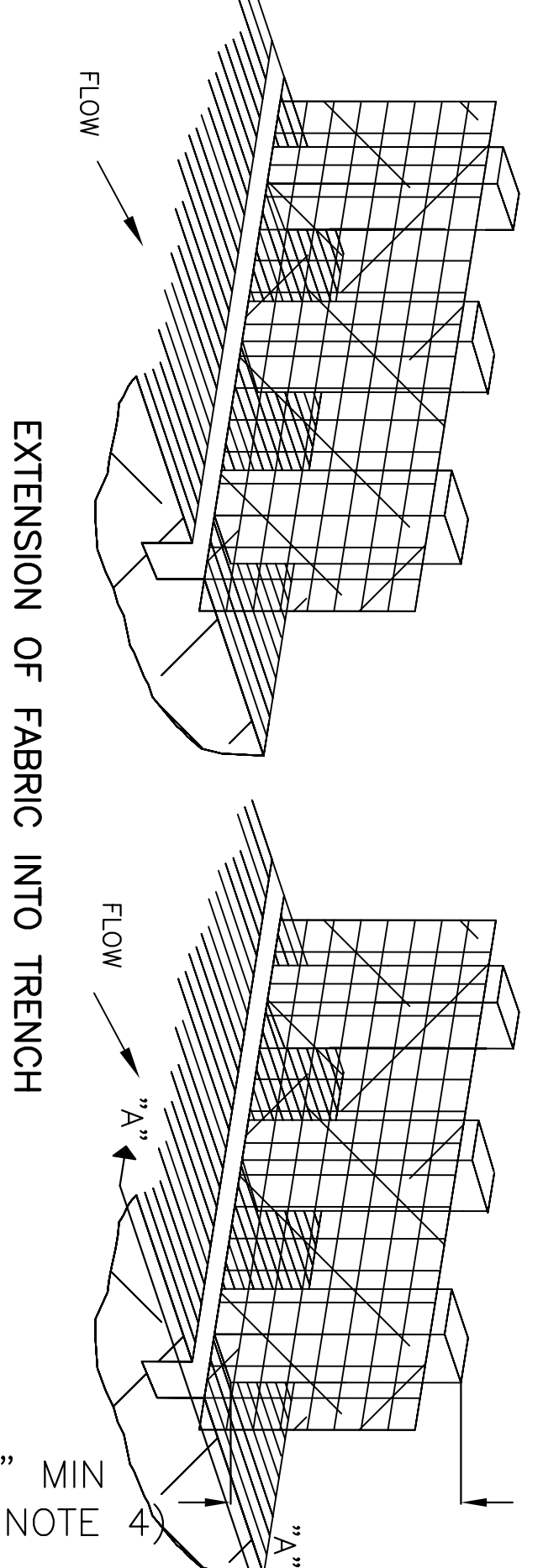
ALFONSO QUINTANILLA
 P.E. No. 95534

- Index
- 1.- COVER SHEET
 - 2.- DEMOLISHING LAYUOT
 - 3.- PAVING AND DRAINAGE LAYOUT
 - 4.- LANDSCAPE LAYOUT
 - 5.- DETAIL SHEET
 - 6.- EROSION CONTROL PLAN
 - 7.- EROSION CONTROL PLAN DETAIL

1. SET POSTS AND EXCAVATE A 4"x4" TRENCH UPSLOPE ALONG LINE OF POSTS (SEE NOTE 1).
2. SECURE WIRE FENCING TO POSTS (SEE NOTE 2).

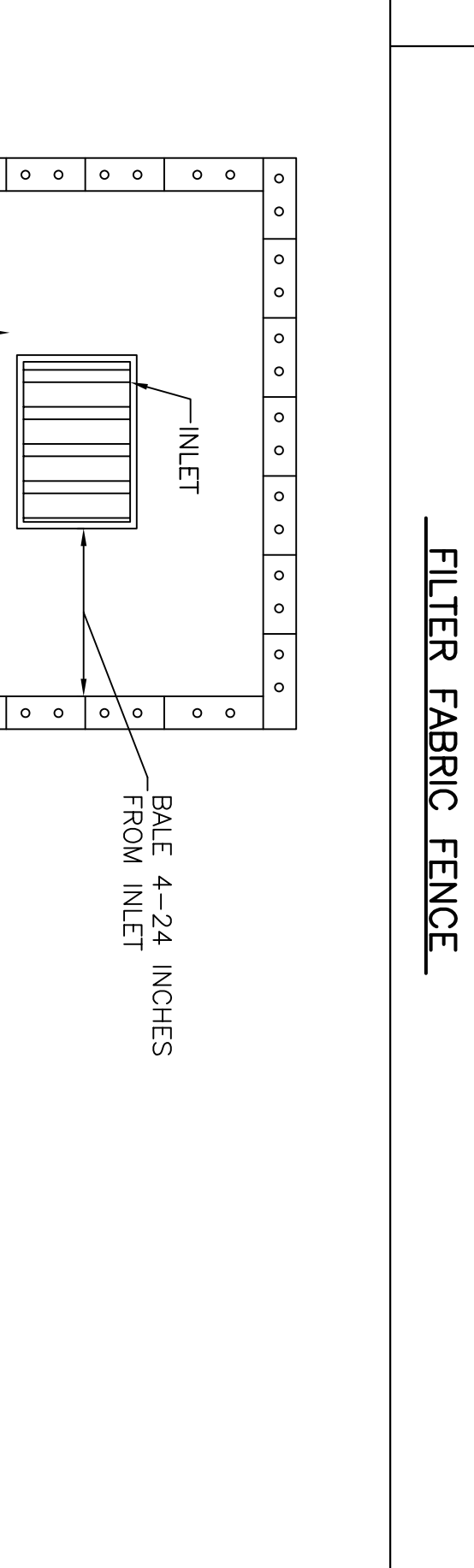
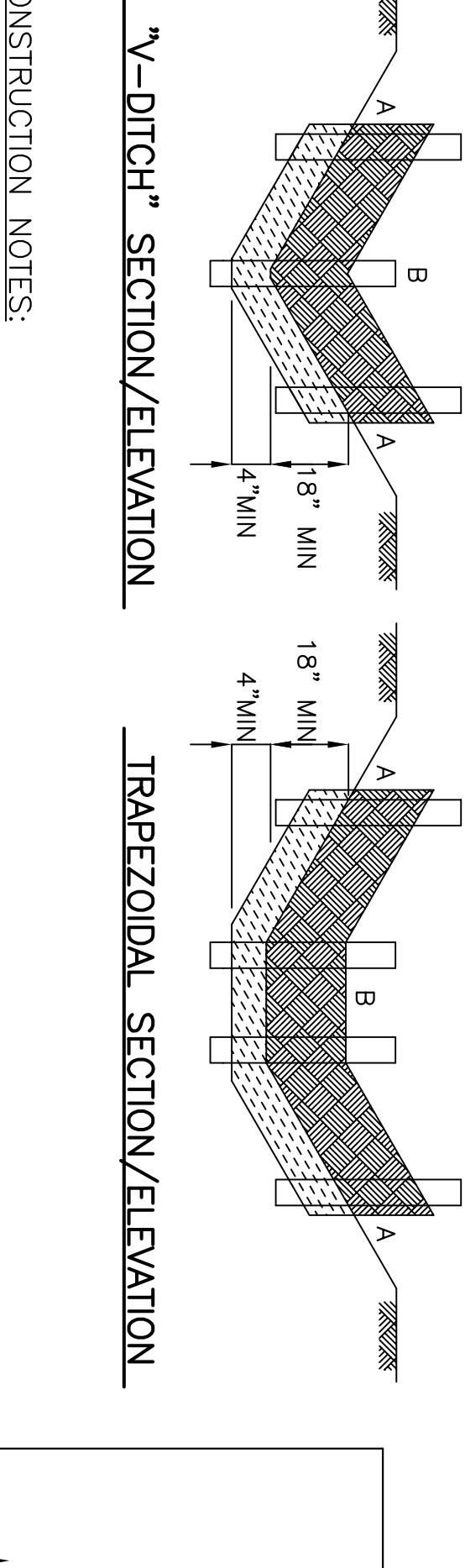
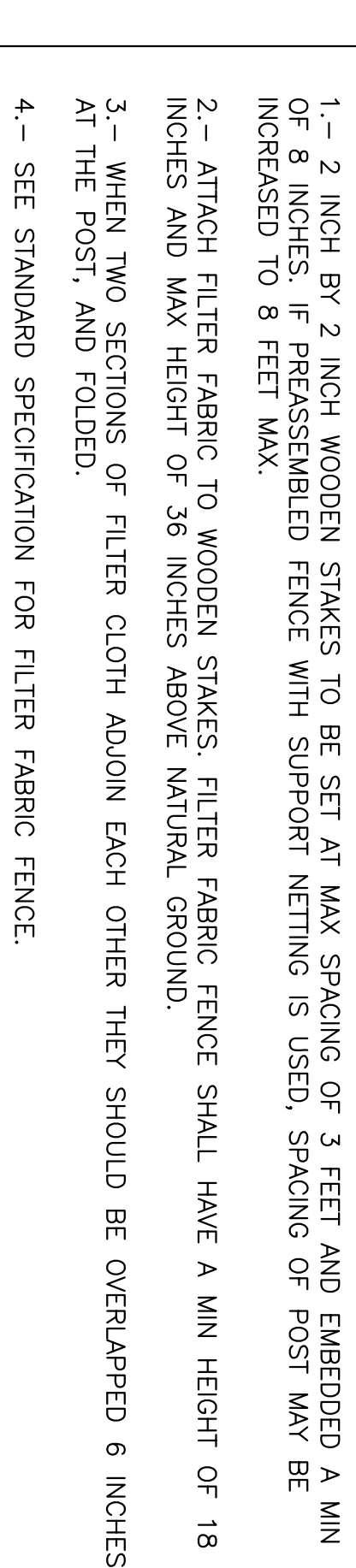
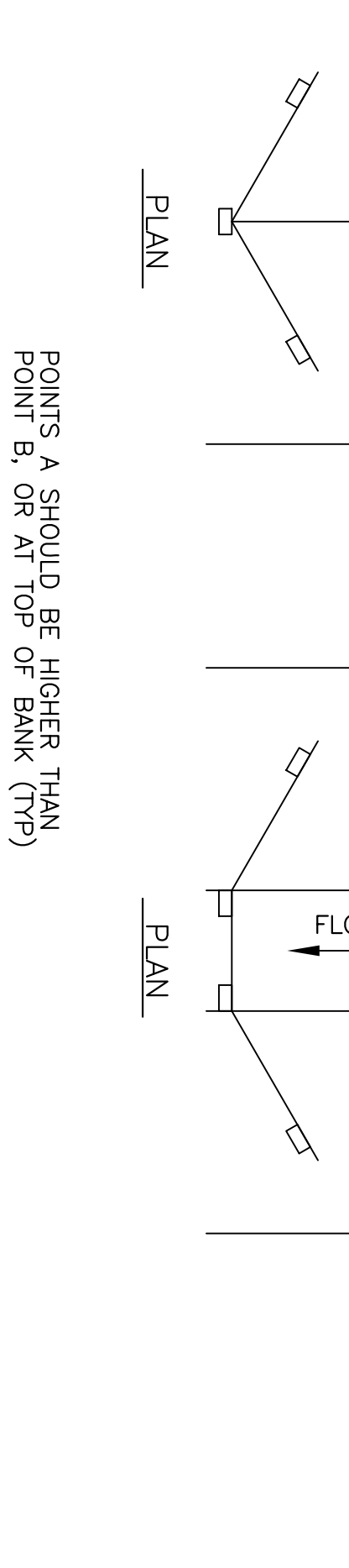
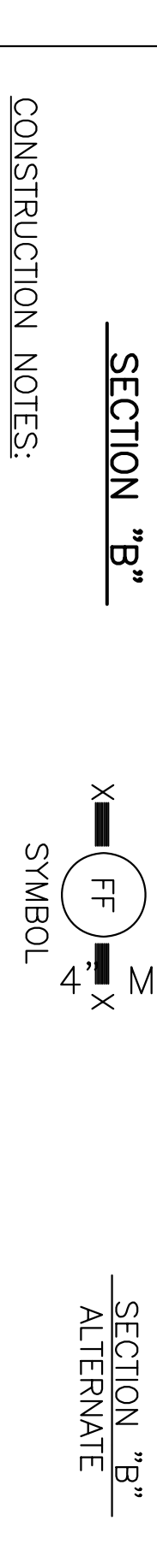
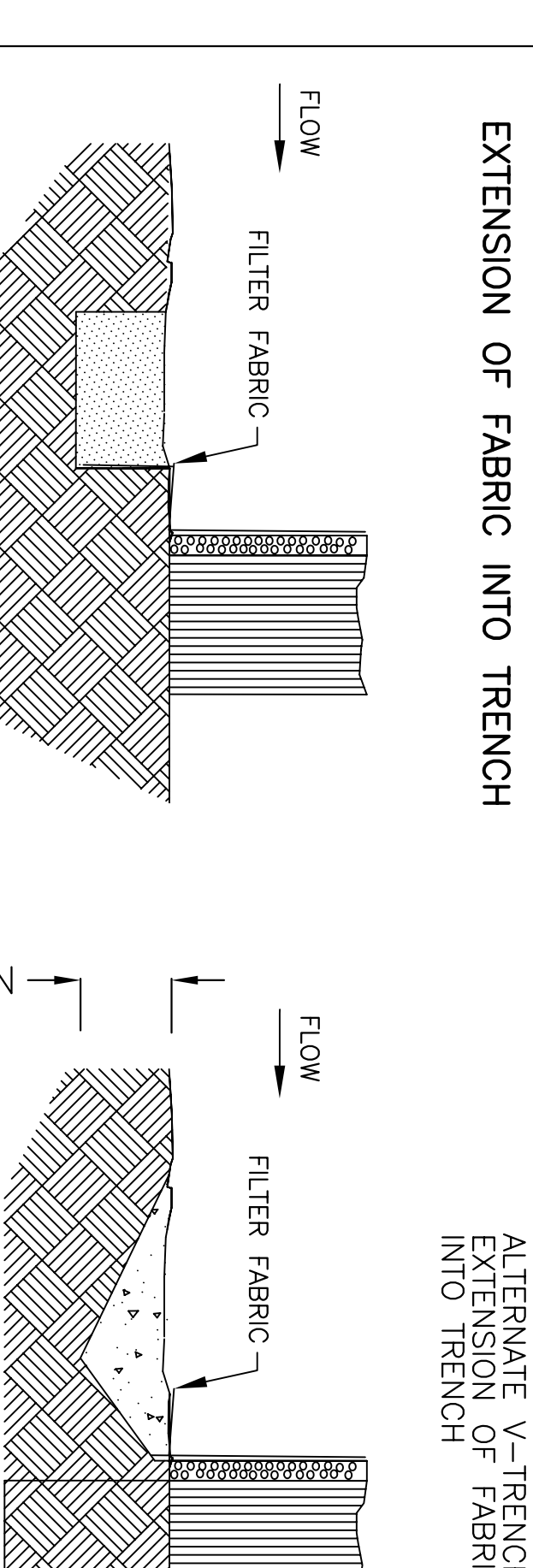
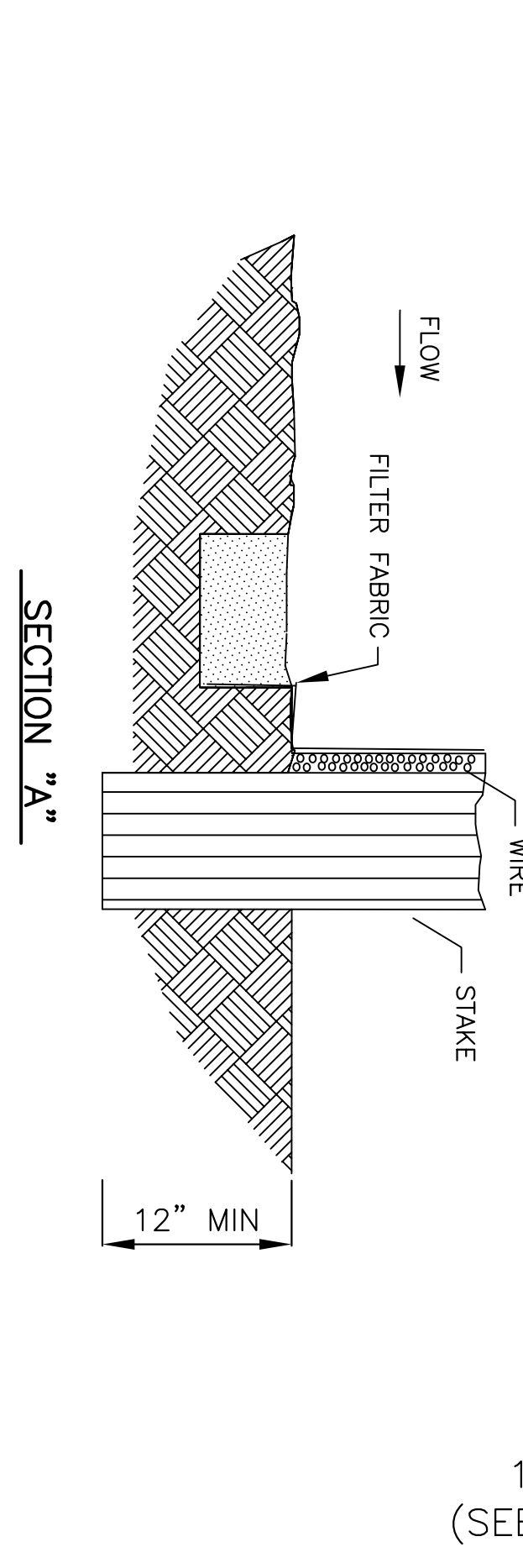


1. SET POSTS AT REQUIRED SPACING.
2. EXCAVATE A 4"x4" TRENCH UPSLOPE ALONG THE LINE OF STAKES.



3. ATTACH FILTER MATERIAL TO WIRE FENCE AND EXTEND IT INTO THE TRENCH (SEE NOTE 3).
4. BACKFILL AND COMPACT THE EXCAVATED SOIL.

3. ATTACH FILTER MATERIAL TO STAKES AND EXTEND IT INTO THE TRENCH.
4. BACKFILL AND COMPACT THE EXCAVATED SOIL.

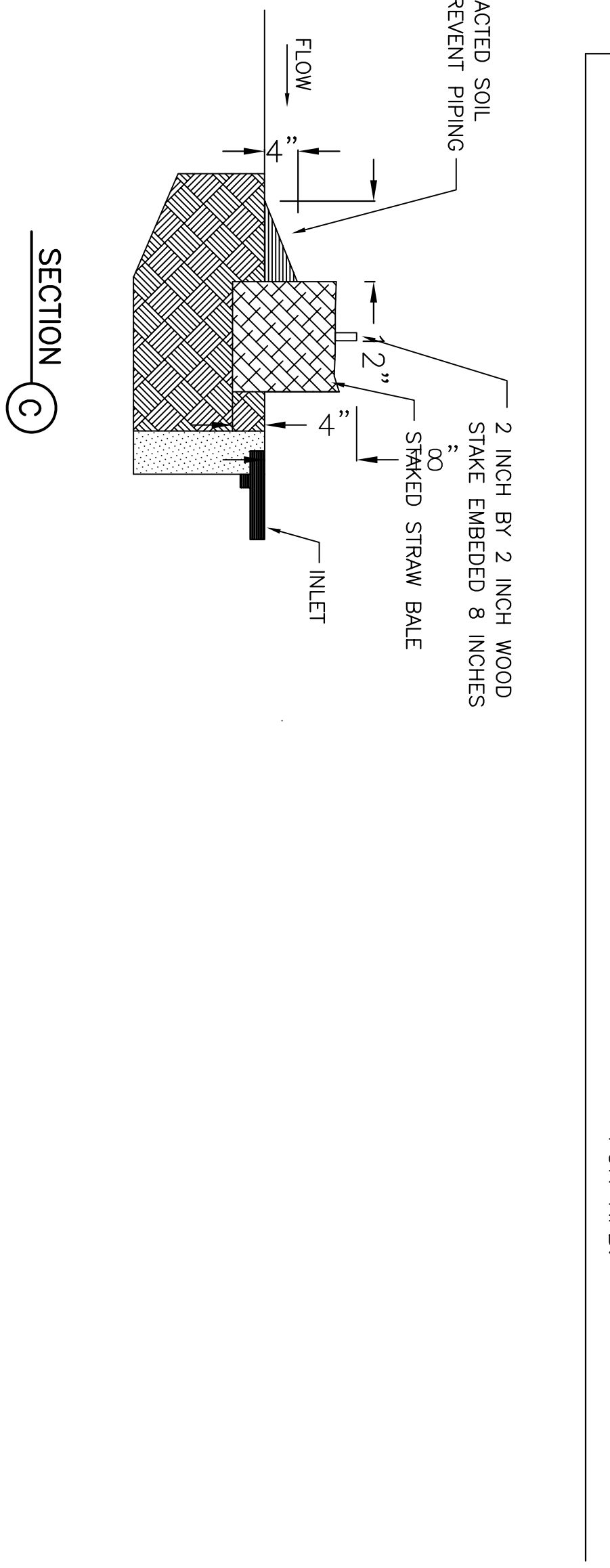
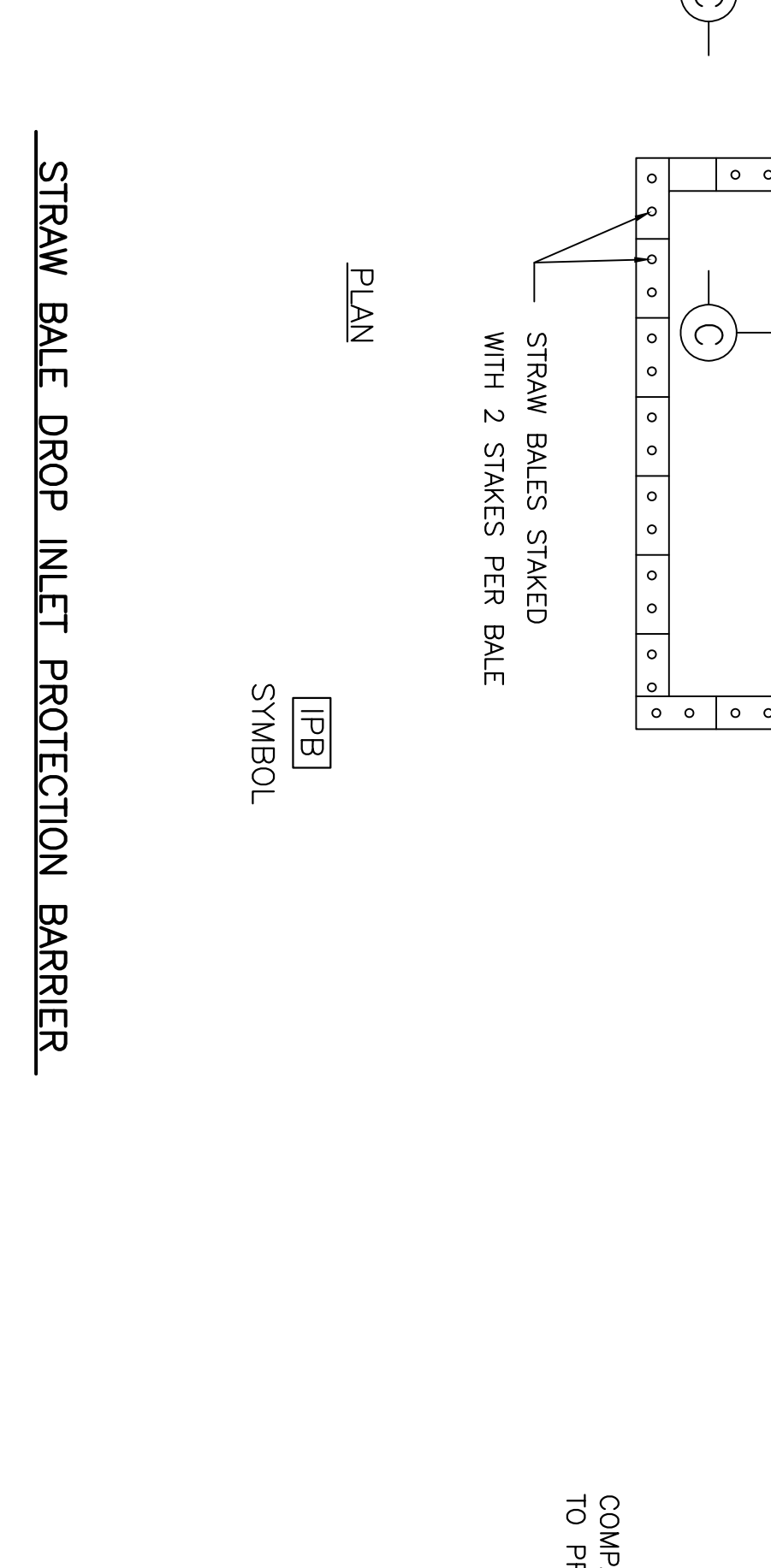


CONSTRUCTION NOTES:

- 1.- SET 2 INCH BY 2 INCH WOODEN STAKES SPACED A MAX. OF 6 FEET APART AND EMBEDDED A MIN. OF 12 INCHES.
- 2.- WOVEN WIRE FENCE TO BE FASTENED SECURELY TO FENCE POSTS WITH STAPLES.
- 3.- FILTER CLOTH TO BE FASTENED SECURELY TO WOVEN WIRE FENCE WITH TIES SPACED EVERY 24 INCHES AT TOP AND MIDSECTION.
- 4.- MINIMUM HEIGHT OF FILTER SHOULD BE 18 INCHES AND A MAXIMUM OF 36 INCHES ABOVE NATURAL GROUND.
- 5.- WHEN TWO SECTIONS OF FILTER CLOTH ADJOIN EACH OTHER THEY SHALL BE OVERLAPPED 6 INCHES AT THE POSTS, AND FOLDED.
- 6.- SEE STANDARD SPECIFICATION FOR FILTER FABRIC BARRIER.

REINFORCED FILTER FABRIC BARRIER

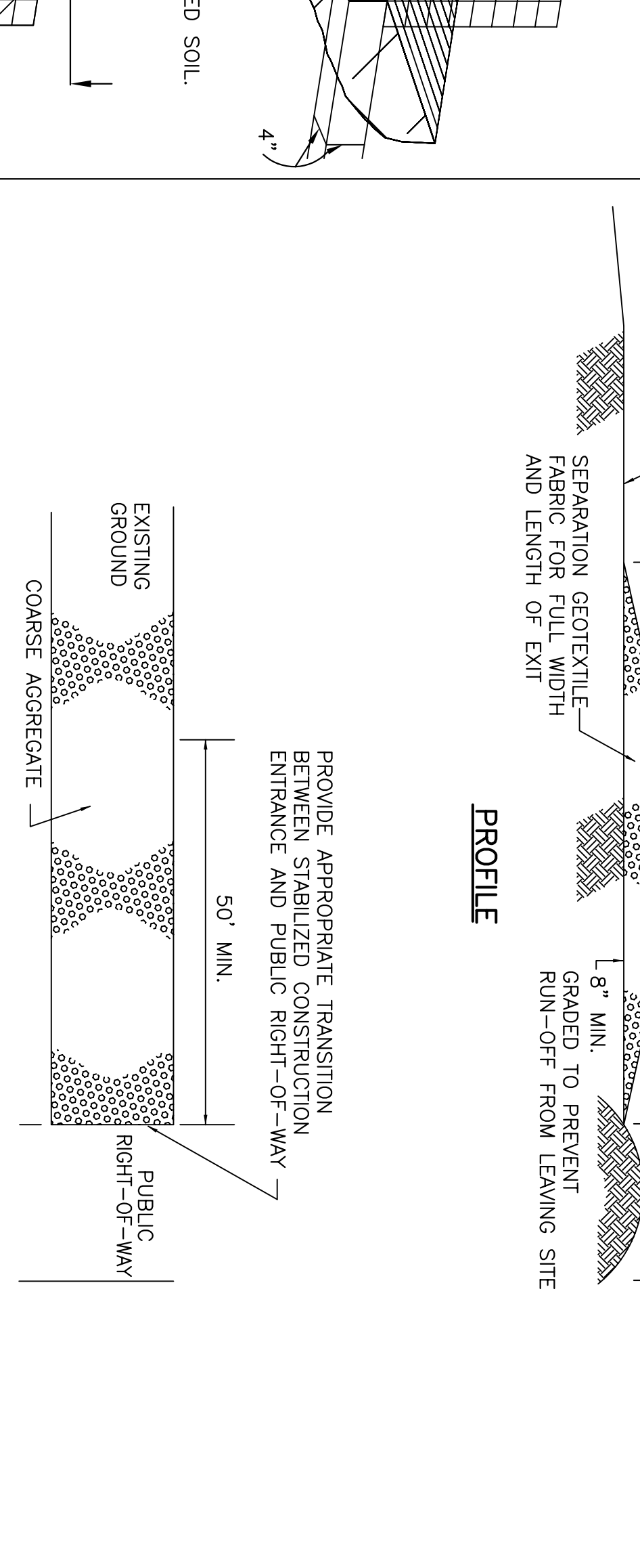
SYMBOL:



STRAW BALE DROP INLET PROTECTION BARRIER

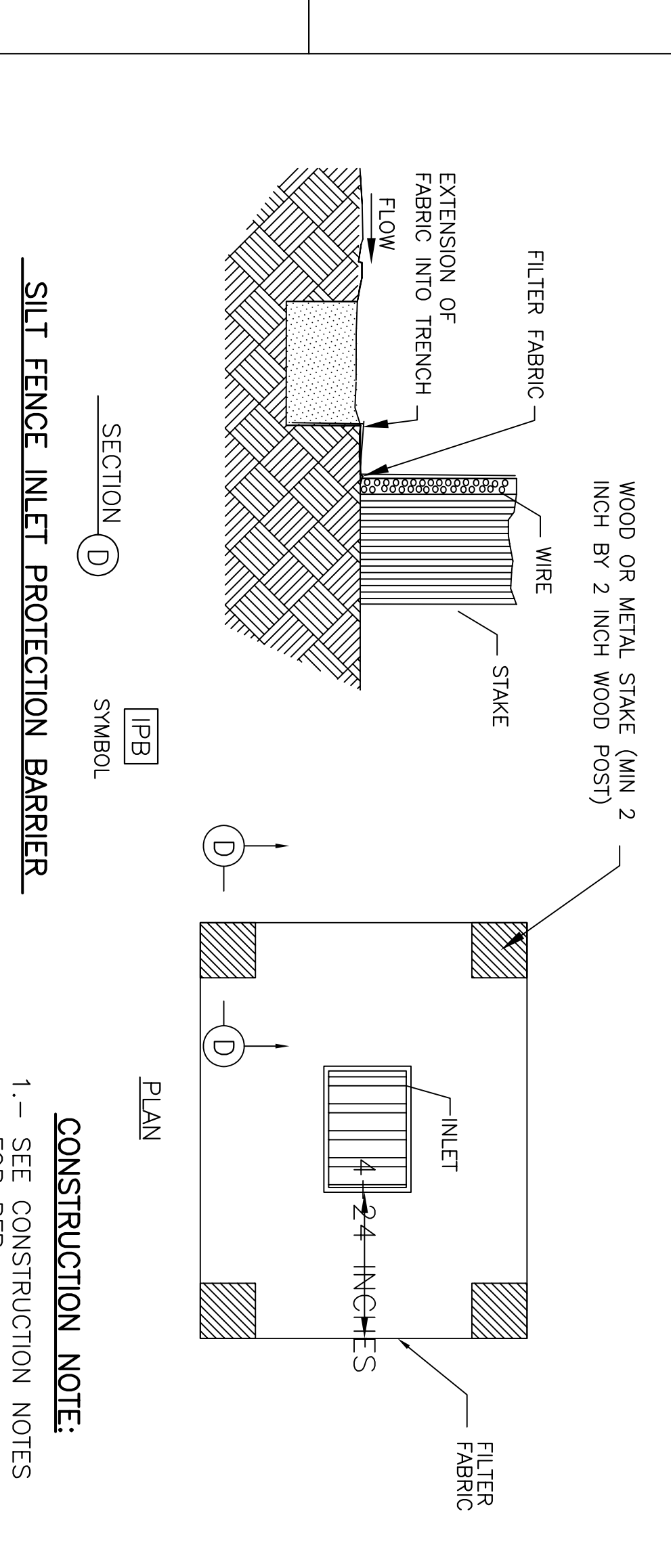
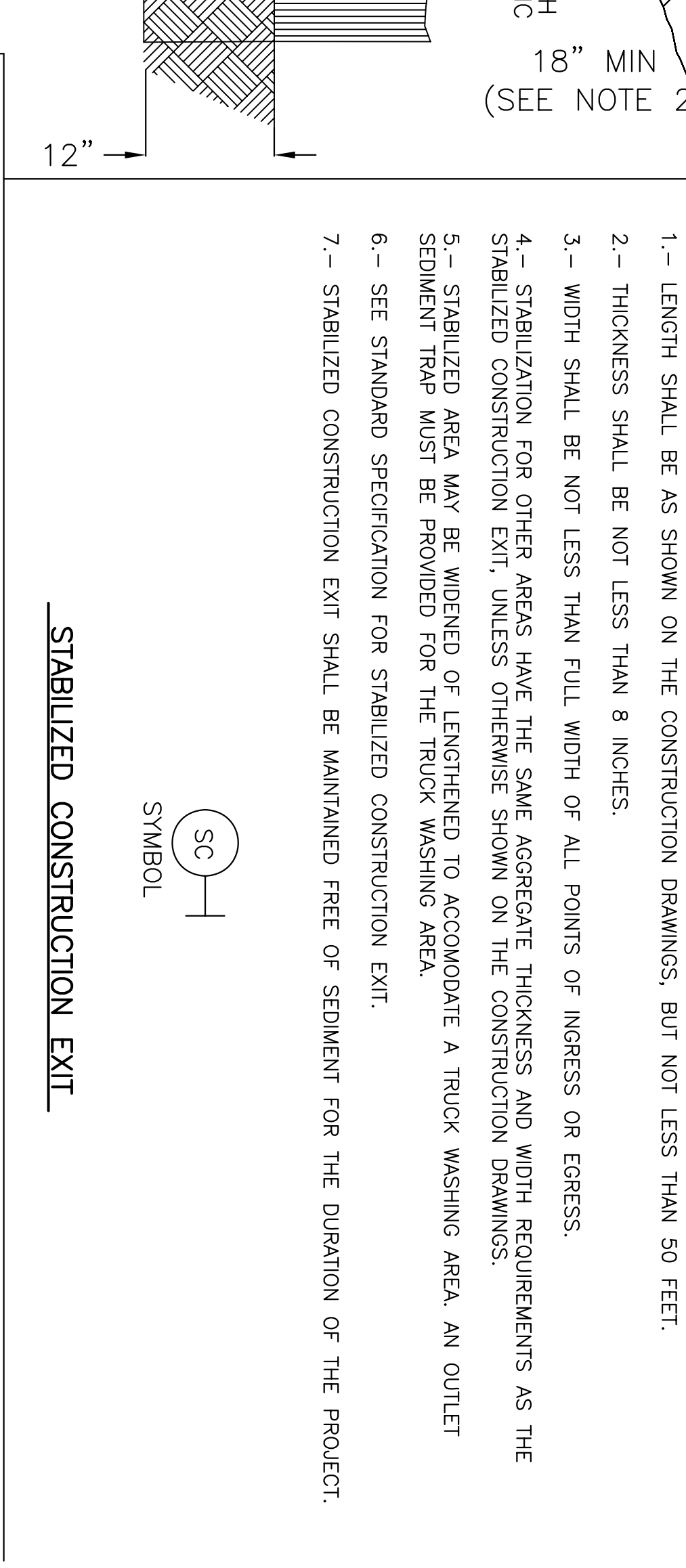
SYMBOL:

- 1.- LENGTH SHALL BE AS SHOWN ON THE CONSTRUCTION DRAWINGS, BUT NOT LESS THAN 50 FEET.
- 2.- THICKNESS SHALL BE NOT LESS THAN 8 INCHES.
- 3.- WIDTH SHALL BE NOT LESS THAN FULL WIDTH OF ALL POINTS OF INGRESS OR EGRESS.
- 4.- STABILIZATION FOR OTHER AREAS HAVE THE SAME AGGREGATE THICKNESS AND WIDTH REQUIREMENTS AS THE STABILIZED CONSTRUCTION EXIT, UNLESS OTHERWISE SHOWN ON THE CONSTRUCTION DRAWINGS.
- 5.- STABILIZED AREA MAY BE WIDENED OF LENGTHENED TO ACCOMMODATE A TRUCK WASHING AREA. AN OUTLET SEDIMENT TRAP MUST BE PROVIDED FOR THE TRUCK WASHING AREA.
- 6.- SEE STANDARD SPECIFICATION FOR STABILIZED CONSTRUCTION EXIT.
- 7.- STABILIZED CONSTRUCTION EXIT SHALL BE MAINTAINED FREE OF SEDIMENT FOR THE DURATION OF THE PROJECT.



STABILIZED CONSTRUCTION EXIT

SYMBOL:



SILT FENCE INLET PROTECTION BARRIER

SYMBOL:

CONSTRUCTION NOTE:

- 1.- SEE CONSTRUCTION NOTES FOR RFB.

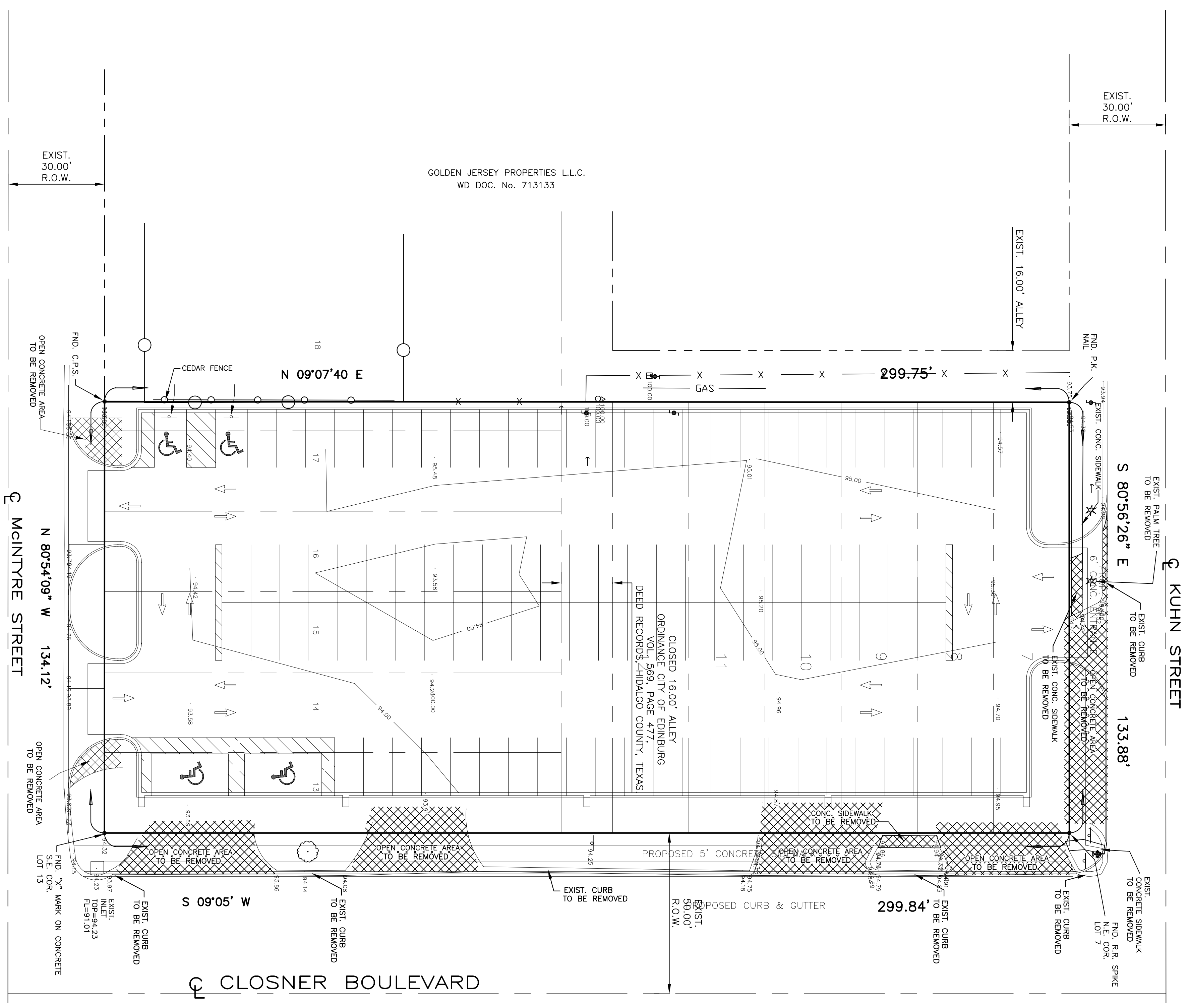
JOB NO.	
DATE	JUNE 3, 2008
REVISION	
SCALE	1" = 20'
DRAWN BY	LUPE
SHEET	

PROPOSED PARKING LOT FOR HIDALGO Co, EDINBURG TX. POLLUTION PREVENTION AND EROSION CONTROL PLAN



QUINTANILLA, HEADLEY AND ASSOCIATES, INC.

CONSULTING ENGINEERS • LAND SURVEYORS
 124 E. STUBBS ST. • PHONE 956-381-6480
 EDINBURG, TEXAS 78539 • FAX 956-381-0527

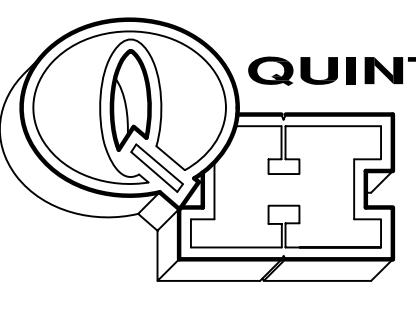


LEGEND
 ☼ = FIRE HYDRANT
 ⊕ = TRAFFIC SIGN
 ○ = TREE

SCALE: 1" = 20'
 N

NOTE:
 1.- ALL AREA IN HATCHING TO BE CLEARED FOR PARKING LOT IMPROVEMENTS
 2.- REMOVE AND DISPOSED OF ALL MATERIALS TO AN APPROPRIATE LAND FILL
 3.- REGRADE AND RECOMPACT AREA TO REQUIRED DENSITY.

F:\DATA\PROJECTS\HIDALGO COUNTY\EDINBURG\MCTYRE & 281\DEMOLISHING



QUINTANILLA, HEADLEY AND ASSOCIATES, INC.
 CONSULTING ENGINEERS • LAND SURVEYORS
 124 E. STUBBS ST. EDINBURG, TEXAS 78539
 PHONE 956-381-6480 FAX 956-381-0527



**PRECINCT No. 4
 PROPOSED PARKING LOT
 FOR HIDALGO Co, EDINBURG TX.
 DEMOLISHING LAYOUT**

JOB NO. _____
 DATE 4-10-2000
 REVISION _____
 SCALE 1"=20'
 DRAWN BY _____
 SHEET _____

