

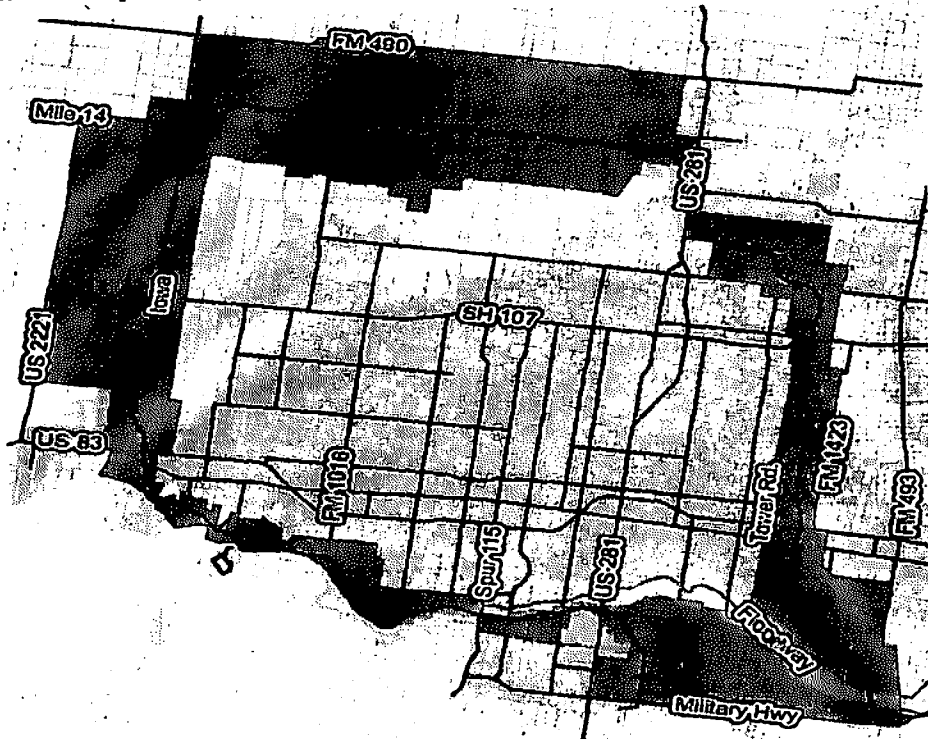
HIDALGO COUNTY COMMISSIONERS COURT NOTICE OF PUBLIC HEARING FOR PROPOSED TRANSPORTATION REINVESTMENT ZONE, NUMBER ONE

NOTICE IS HEREBY GIVEN that at 9:30 a.m. on November 4, 2008, a public hearing will be held by the Hidalgo County Commissioners Court (the "County") in the Commissioners' Courtroom of the Administration Building, 100 E. Cano, 1st Floor, Edinburg, Hidalgo County, Texas to receive comments from interested individuals regarding the creation of "Transportation Reinvestment Zone Number One, County of Hidalgo" (the "Zone"), the benefits of the Zone to the County and to property in the Zone, and the abatement of ad valorem taxes imposed by the County on real property located in the Zone.

The proposed Zone consists of an area located entirely within Hidalgo County and encompassing approximately 221.9 square miles, located wholly within the following described area:

Beginning at the intersection of US 281 just north of Mile 20, continuing east southeast to FM 1925, then continuing south, east of Tower Road to US 83 with an area plus or minus 2 miles from either side of the centerline. Then from US 83 to Moore Drive; thence, east south east to an intersection of FM 493 and Military Highway with an area plus or minus 3.5 miles from either side of the centerline. Continuing to the west, south of the floodway and north of Military Highway containing approximately 10,000 acres. Then from Military Highway, east of I-Road continuing north until Thomas Road; thence, continuing west to US 281. Then from US 281, continuing west, south of the floodway to Spur 115, continuing west northwest, north of the floodway to US 83 just east of FM 1423 with an area plus or minus 2 miles from either side of the centerline. Then from US 83, west of Iowa Rd., north to Mile 14 with an area plus or minus 3.5 miles from either side of the centerline. Then continuing from Mile 14 east to US 281 with an area plus or minus 3.25 miles from either side of the centerline.

The Zone is depicted by the shaded area on the map below:



A specific boundary description for the Zone may be obtained upon request by contacting SERGIO CRUZ at (956) 292-7025 ext. 5424. Additionally, a copy of the specific boundary description and a map depicting the boundaries of the Zone may be viewed at: Department of Budget & Management, 2818 S. Bus. Hwy 281, Edinburg, Texas 78539.

All interested citizens are invited to attend this public hearing and to speak for or against the designation of the Zone, its boundaries, or the abatement of county taxes on real property located in the Zone.

This meeting site is accessible to persons in wheelchairs. If special assistance or accommodations are required in order to attend this public hearing, please contact SERGIO CRUZ at (956) 292-7025 ext. 5424 in advance so that accommodations can be made. Persons with disabilities who plan to attend the public hearing and who may need auxiliary aids or services such as interpreters for persons who are deaf or hearing impaired, and readers of large print or Braille, are requested to contact SERGIO CRUZ at (956) 292-7025 ext. 5424 at least two (2) business days prior to the hearing so that appropriate arrangements can be made.