



PROJECT MANUAL

BID/PROJECT NO. 2008-406-12-17-MSS

Construction of

Meeting Hall/ Pavilion

HIDALGO COUNTY PRECINCT NO. 3

NOVEMBER, 2008

Architect:
ALCOCER GARCIA ASSOCIATES
DESIGN CONSULTING
McAllen, Texas

Mechanical /Electrical Engineer:
UNITECH ENGINEERING, INC.
McAllen, Texas

Structural Engineer:
HINOJOSA ENGINEERING, INC.
Mission, Texas

SET NO. _____

Project : Meeting Hall / Pavilion Bid/Project No.: 2008-406-12-17-MSS
 Precinct 3
 Hidalgo County, Texas

SPECIFICATIONS TABLE OF CONTENTS

| | number of pages |
|---|--------------------|
| Request for Bids (RFB) Checklist | 1 |
| Invitation to Bidders | 1 |
| Request for Bid Legal Notice | 6 |
| Bid Bond | 2 |
| Bid Form..... | 2 |
| Insurance Requirements and Insurance Requirement Acknowledgment | 3 |
| Conflict of Interest Questionnaire..... | 1 |
| Non-Collusion Affidavit | 1 |
| Bidder/Vendor Application | 1 |
| Request for Taxpayer Identification Number and Certification..... | 4 |
| Historically Underutilized Business (HUB) Declaration..... | 1 |
| Construction Contract and Conditions of the Contract | 1 |
| Addendum Form | 2 |
| Payment Bond | 2 |
| Performance Bond | 2 |
| General Requirements: | |
| Summary of the Work 01010 | 1 |
| Allowances 01020 | 2 |
| Applications for Payment 01027 | 2 |
| Project Coordination 01040 | 4 |
| Field Engineering 01050 | 3 |
| Definitions and Standards 01090 | 8 |
| Project Meetings 01200 | 3 |
| Submittals 01300 | 6 |
| Quality Control Services 01400 | 3 |
| Temporary Facilities 01500 | 3 |
| Product Substitutions 01631 | 2 |
| Project Close-out 01700 | 5 |
| Warranties and Bonds 01740 | 1 |

cont

Specifications
Meeting Hall / Pavilion
Precinct 3
Hidalgo County, Texas

| | number of pages |
|---|--------------------|
| Metal Fabrications 05500 | 2 |
| Rough Carpentry 06100 | 3 |
| Finish Carpentry 06200 | 4 |
| Interior Architectural Woodwork (cabinets/shelving) 06402 | 4 |
| Water Repellant 07180 | 3 |
| Insulation 07200 | 2 |
| Metal Soffit Panels 07410 | 1 |
| Composite Modified Bitumen Roofing 07510 | 15 |
| Flashing and Sheet Metal 07600 | 2 |
| Roof Hatch 07720 | 3 |
| Joint Sealers 07900 | 4 |
| Steel Doors and Frames 08110 | 2 |
| Wood Doors 08211 | 3 |
| Overhead Door 08330 | 2 |
| Overhead Coiling Door 08331 | 3 |
| Aluminum Entrances & Window Frames 08410 | 2 |
| Finish Hardware 08710 | 9 |
| Glass and Glazing 08800 | 3 |
| Metal Stud Framing, 09100 | 2 |
| Portland Cement Plaster 09220 | 8 |
| Gypsum Drywall 09250 | 4 |
| Ceramic Tile 09300 | 4 |
| Acoustical Ceiling Suspension System 09501 | 3 |
| Acoustical Ceiling Lay-in Panels 09511 | 2 |
| Resilient Flooring 09650 | 4 |
| Carpeting 09680 | 4 |
| Painting 09900 | 6 |
| Markerboard / Tackboards 10100 | 1 |
| Toilet Partitions 10160 | 3 |
| Ventilation Screens 10200 | 1 |
| Wall Corner Guards 10260 | 1 |
| Identifying Devices 10440 | 1 |
| Fire Extinguishers 10522 | 3 |
| Toilet Room Accessories 10800 | 1 |
| Portable Stage 11610..... | 1 |
| Stainless Steel Tables | 1 |

DIVISION 15 - Mechanical Specifications Table of Contents
DIVISION 16 - Electrical Specifications Table of Contents

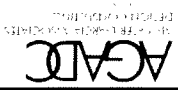
MEETING HALL / PAVILION

HIDALGO COUNTY PRECINCT 3

HIDALGO COUNTY, TEXAS



MEETING HALL / PAVILION
HIDALGO COUNTY PRECINCT 3
HIDALGO COUNTY, TEXAS



AGARC ARCHITECTURAL GROUP
10000 W. 10TH STREET, SUITE 100
DALLAS, TEXAS 75243
PHONE: 972.412.1000
FAX: 972.412.1001
WWW.AGARC.COM

CAST ALUMINUM
PLAQUE

MEETING HALL
PAVILION
HIDALGO COUNTY, TEXAS

OWNER: HIDEKO
10000 W. 10TH STREET, SUITE 100
DALLAS, TEXAS 75243

DESIGNER: AGARC ARCHITECTURAL GROUP
10000 W. 10TH STREET, SUITE 100
DALLAS, TEXAS 75243

DATE: 2006

PROJECTS:
PRECINCT 1
PRECINCT 2
PRECINCT 3
PRECINCT 4

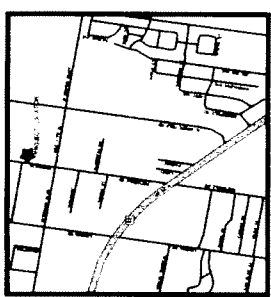
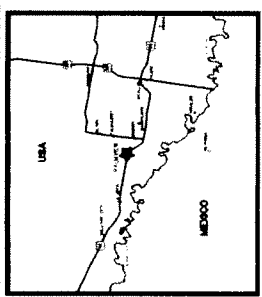
DESIGNED BY: [Signature]

DATE: 2006

BUILDING PLAQUE

DRAWINGS INDEX

| NO. | DESCRIPTION |
|-----|--------------------------|
| 01 | GENERAL NOTES |
| 02 | FOUNDATION PLAN |
| 03 | FOUNDATION DETAIL |
| 04 | FOUNDATION SECTION |
| 05 | FOUNDATION PLAN & DETAIL |
| 06 | FOUNDATION SECTION |
| 07 | FOUNDATION PLAN & DETAIL |
| 08 | FOUNDATION SECTION |
| 09 | FOUNDATION PLAN & DETAIL |
| 10 | FOUNDATION SECTION |
| 11 | FOUNDATION PLAN & DETAIL |
| 12 | FOUNDATION SECTION |
| 13 | FOUNDATION PLAN & DETAIL |
| 14 | FOUNDATION SECTION |
| 15 | FOUNDATION PLAN & DETAIL |
| 16 | FOUNDATION SECTION |
| 17 | FOUNDATION PLAN & DETAIL |
| 18 | FOUNDATION SECTION |
| 19 | FOUNDATION PLAN & DETAIL |
| 20 | FOUNDATION SECTION |
| 21 | FOUNDATION PLAN & DETAIL |
| 22 | FOUNDATION SECTION |
| 23 | FOUNDATION PLAN & DETAIL |
| 24 | FOUNDATION SECTION |
| 25 | FOUNDATION PLAN & DETAIL |
| 26 | FOUNDATION SECTION |
| 27 | FOUNDATION PLAN & DETAIL |
| 28 | FOUNDATION SECTION |
| 29 | FOUNDATION PLAN & DETAIL |
| 30 | FOUNDATION SECTION |
| 31 | FOUNDATION PLAN & DETAIL |
| 32 | FOUNDATION SECTION |
| 33 | FOUNDATION PLAN & DETAIL |
| 34 | FOUNDATION SECTION |
| 35 | FOUNDATION PLAN & DETAIL |
| 36 | FOUNDATION SECTION |
| 37 | FOUNDATION PLAN & DETAIL |
| 38 | FOUNDATION SECTION |
| 39 | FOUNDATION PLAN & DETAIL |
| 40 | FOUNDATION SECTION |
| 41 | FOUNDATION PLAN & DETAIL |
| 42 | FOUNDATION SECTION |
| 43 | FOUNDATION PLAN & DETAIL |
| 44 | FOUNDATION SECTION |
| 45 | FOUNDATION PLAN & DETAIL |
| 46 | FOUNDATION SECTION |
| 47 | FOUNDATION PLAN & DETAIL |
| 48 | FOUNDATION SECTION |
| 49 | FOUNDATION PLAN & DETAIL |
| 50 | FOUNDATION SECTION |
| 51 | FOUNDATION PLAN & DETAIL |
| 52 | FOUNDATION SECTION |
| 53 | FOUNDATION PLAN & DETAIL |
| 54 | FOUNDATION SECTION |
| 55 | FOUNDATION PLAN & DETAIL |
| 56 | FOUNDATION SECTION |
| 57 | FOUNDATION PLAN & DETAIL |
| 58 | FOUNDATION SECTION |
| 59 | FOUNDATION PLAN & DETAIL |
| 60 | FOUNDATION SECTION |
| 61 | FOUNDATION PLAN & DETAIL |
| 62 | FOUNDATION SECTION |
| 63 | FOUNDATION PLAN & DETAIL |
| 64 | FOUNDATION SECTION |
| 65 | FOUNDATION PLAN & DETAIL |
| 66 | FOUNDATION SECTION |
| 67 | FOUNDATION PLAN & DETAIL |
| 68 | FOUNDATION SECTION |
| 69 | FOUNDATION PLAN & DETAIL |
| 70 | FOUNDATION SECTION |
| 71 | FOUNDATION PLAN & DETAIL |
| 72 | FOUNDATION SECTION |
| 73 | FOUNDATION PLAN & DETAIL |
| 74 | FOUNDATION SECTION |
| 75 | FOUNDATION PLAN & DETAIL |
| 76 | FOUNDATION SECTION |
| 77 | FOUNDATION PLAN & DETAIL |
| 78 | FOUNDATION SECTION |
| 79 | FOUNDATION PLAN & DETAIL |
| 80 | FOUNDATION SECTION |
| 81 | FOUNDATION PLAN & DETAIL |
| 82 | FOUNDATION SECTION |
| 83 | FOUNDATION PLAN & DETAIL |
| 84 | FOUNDATION SECTION |
| 85 | FOUNDATION PLAN & DETAIL |
| 86 | FOUNDATION SECTION |
| 87 | FOUNDATION PLAN & DETAIL |
| 88 | FOUNDATION SECTION |
| 89 | FOUNDATION PLAN & DETAIL |
| 90 | FOUNDATION SECTION |
| 91 | FOUNDATION PLAN & DETAIL |
| 92 | FOUNDATION SECTION |
| 93 | FOUNDATION PLAN & DETAIL |
| 94 | FOUNDATION SECTION |
| 95 | FOUNDATION PLAN & DETAIL |
| 96 | FOUNDATION SECTION |
| 97 | FOUNDATION PLAN & DETAIL |
| 98 | FOUNDATION SECTION |
| 99 | FOUNDATION PLAN & DETAIL |
| 100 | FOUNDATION SECTION |



MECHANICAL & ELECTRICAL ENGINEERING
Unitech Engineering
10000 W. 10TH STREET, SUITE 100
DALLAS, TEXAS 75243
PHONE: 972.412.1000
FAX: 972.412.1001
WWW.UNITECH.COM

STRUCTURAL ENGINEER
Hinojosa Engineering, Inc.
10000 W. 10TH STREET, SUITE 100
DALLAS, TEXAS 75243
PHONE: 972.412.1000
FAX: 972.412.1001
WWW.HINOJOSA.COM

ARCHITECT
Alcocer Garcia Associates Design Consulting
10000 W. 10TH STREET, SUITE 100
DALLAS, TEXAS 75243
PHONE: 972.412.1000
FAX: 972.412.1001
WWW.AGARC.COM

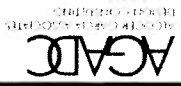
AC

SET #

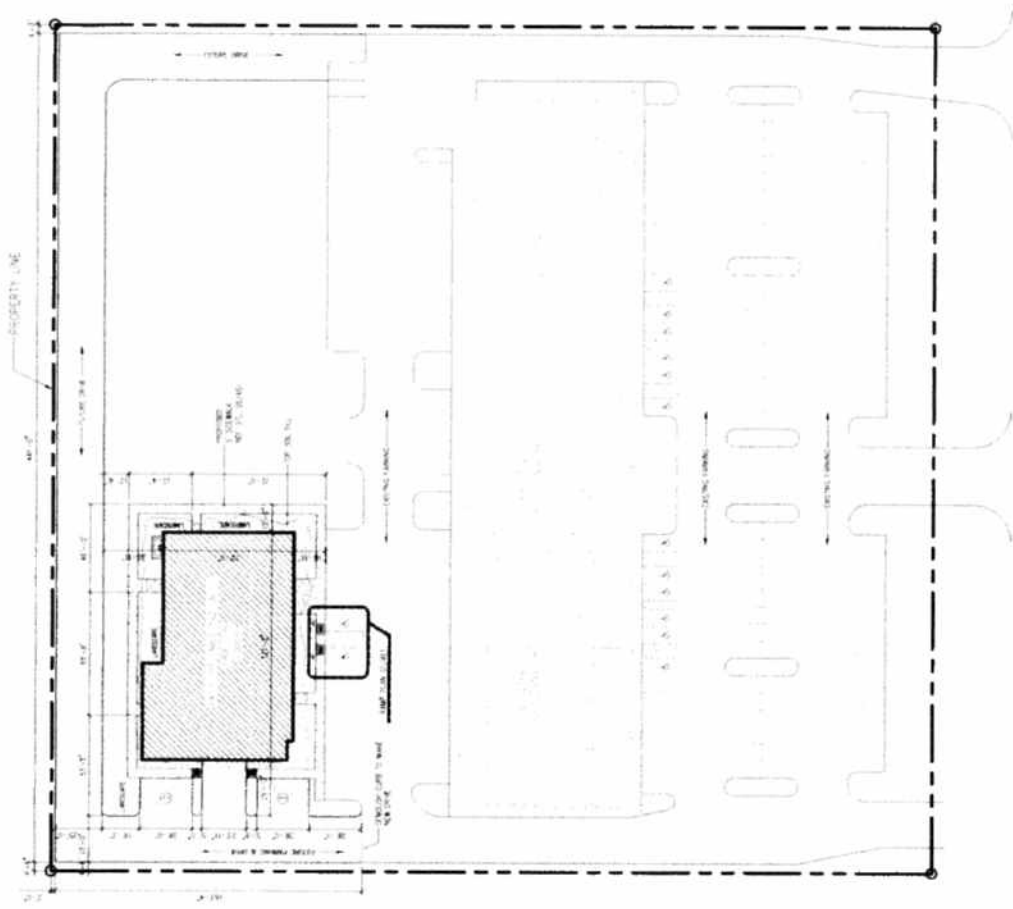
11-10-06
11-10-06
11-10-06
11-10-06
11-10-06

MEETING HALL / PAVILION
HIDALGO COUNTY PRECINCT 3
HIDALGO COUNTY, TEXAS

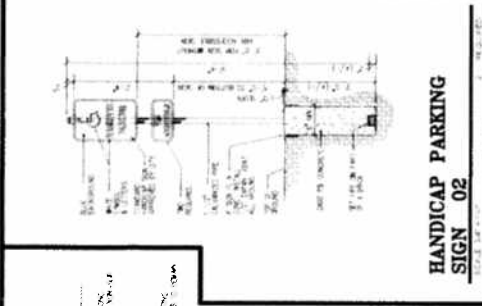
AS1



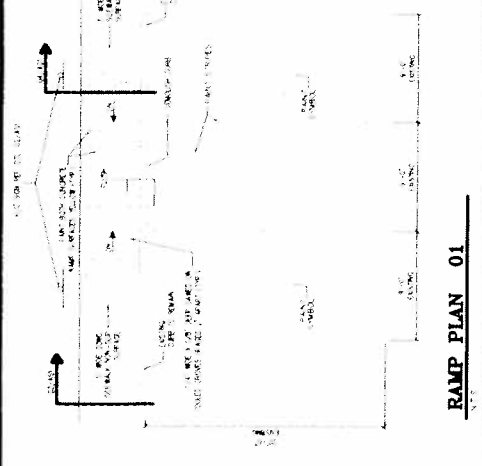
AGARD CONSULTING ENGINEERS
 10000 W. STATE ST. SUITE 100
 DALLAS, TEXAS 75243
 TEL: 972.987.1000
 FAX: 972.987.1001
 WWW.AGARD-CE.COM



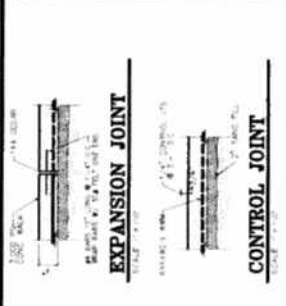
BREYFOGLE RD.



RAMP PLAN 01

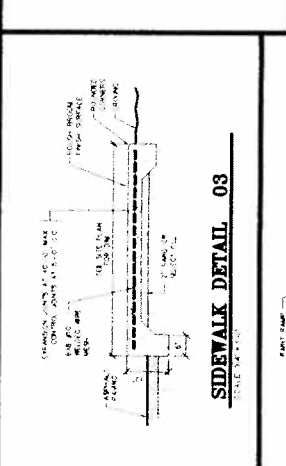


HANDICAP PARKING SIGN 02

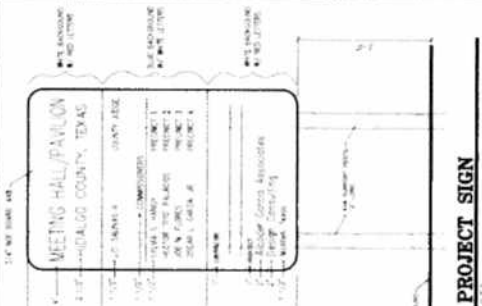


EXPANSION JOINT

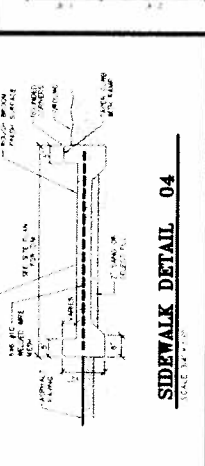
CONTROL JOINT



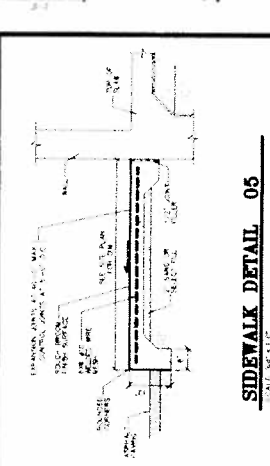
SIDEWALK DETAIL 03



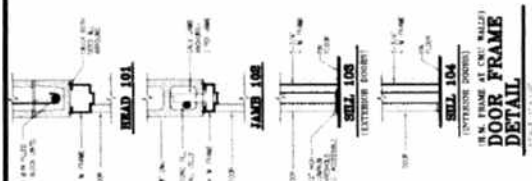
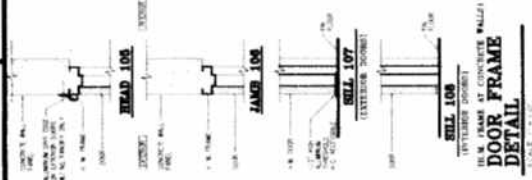
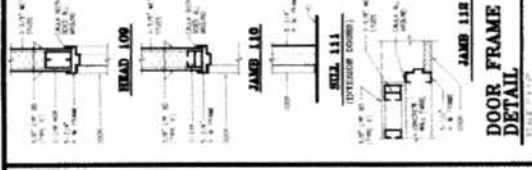
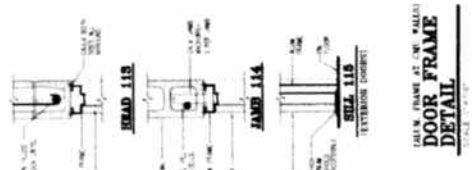
PROJECT SIGN



SIDEWALK DETAIL 04



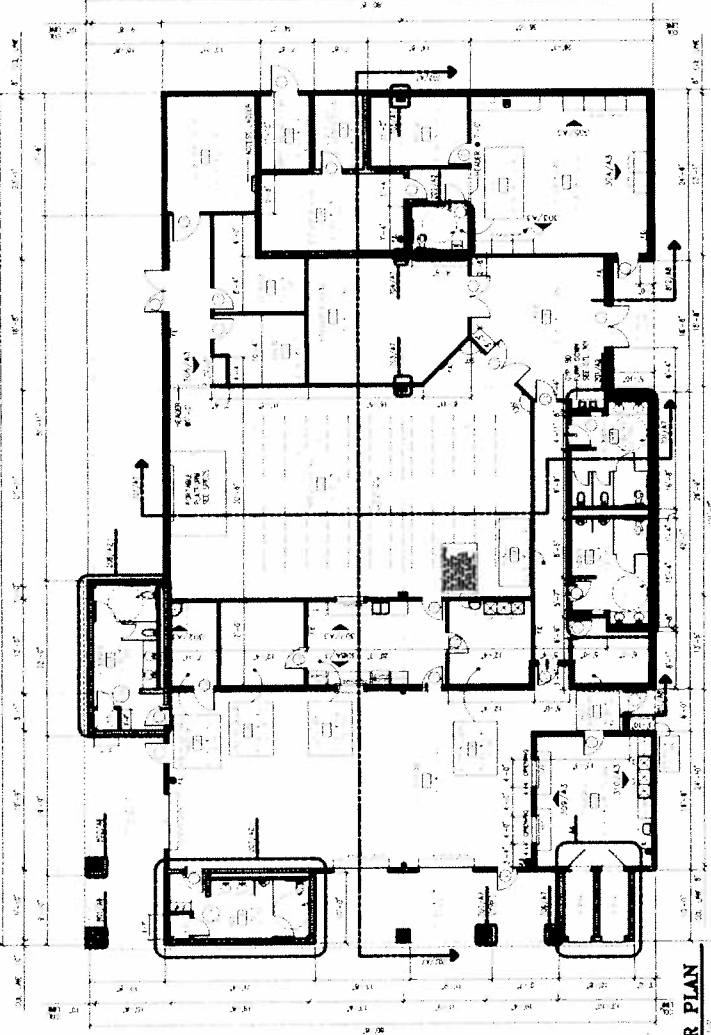
SIDEWALK DETAIL 05



- 1. 1/2" ALUM. EXTRUSION
- 2. 1/2" ALUM. EXTRUSION
- 3. 1/2" ALUM. EXTRUSION
- 4. 1/2" ALUM. EXTRUSION
- 5. 1/2" ALUM. EXTRUSION
- 6. 1/2" ALUM. EXTRUSION
- 7. 1/2" ALUM. EXTRUSION
- 8. 1/2" ALUM. EXTRUSION
- 9. 1/2" ALUM. EXTRUSION
- 10. 1/2" ALUM. EXTRUSION
- 11. 1/2" ALUM. EXTRUSION
- 12. 1/2" ALUM. EXTRUSION
- 13. 1/2" ALUM. EXTRUSION
- 14. 1/2" ALUM. EXTRUSION
- 15. 1/2" ALUM. EXTRUSION
- 16. 1/2" ALUM. EXTRUSION
- 17. 1/2" ALUM. EXTRUSION
- 18. 1/2" ALUM. EXTRUSION
- 19. 1/2" ALUM. EXTRUSION
- 20. 1/2" ALUM. EXTRUSION

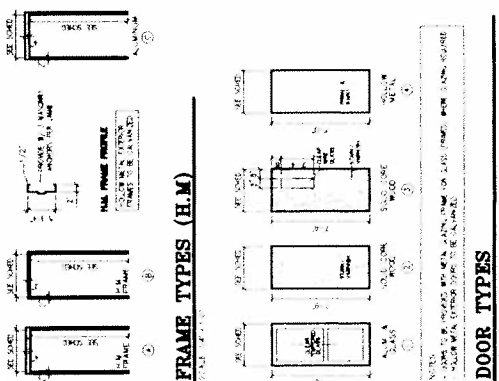
| | | | |
|--------------------------|--------------------------|--------------------------|--------------------------|
| 1. 1/2" ALUM. EXTRUSION | 2. 1/2" ALUM. EXTRUSION | 3. 1/2" ALUM. EXTRUSION | 4. 1/2" ALUM. EXTRUSION |
| 5. 1/2" ALUM. EXTRUSION | 6. 1/2" ALUM. EXTRUSION | 7. 1/2" ALUM. EXTRUSION | 8. 1/2" ALUM. EXTRUSION |
| 9. 1/2" ALUM. EXTRUSION | 10. 1/2" ALUM. EXTRUSION | 11. 1/2" ALUM. EXTRUSION | 12. 1/2" ALUM. EXTRUSION |
| 13. 1/2" ALUM. EXTRUSION | 14. 1/2" ALUM. EXTRUSION | 15. 1/2" ALUM. EXTRUSION | 16. 1/2" ALUM. EXTRUSION |
| 17. 1/2" ALUM. EXTRUSION | 18. 1/2" ALUM. EXTRUSION | 19. 1/2" ALUM. EXTRUSION | 20. 1/2" ALUM. EXTRUSION |

ASPS
 ASB FINISHING AREA 1.547 5.4
 DEN AREA 1.543 5.4
 TOTAL BUILDING SIZE 1.550 5.7

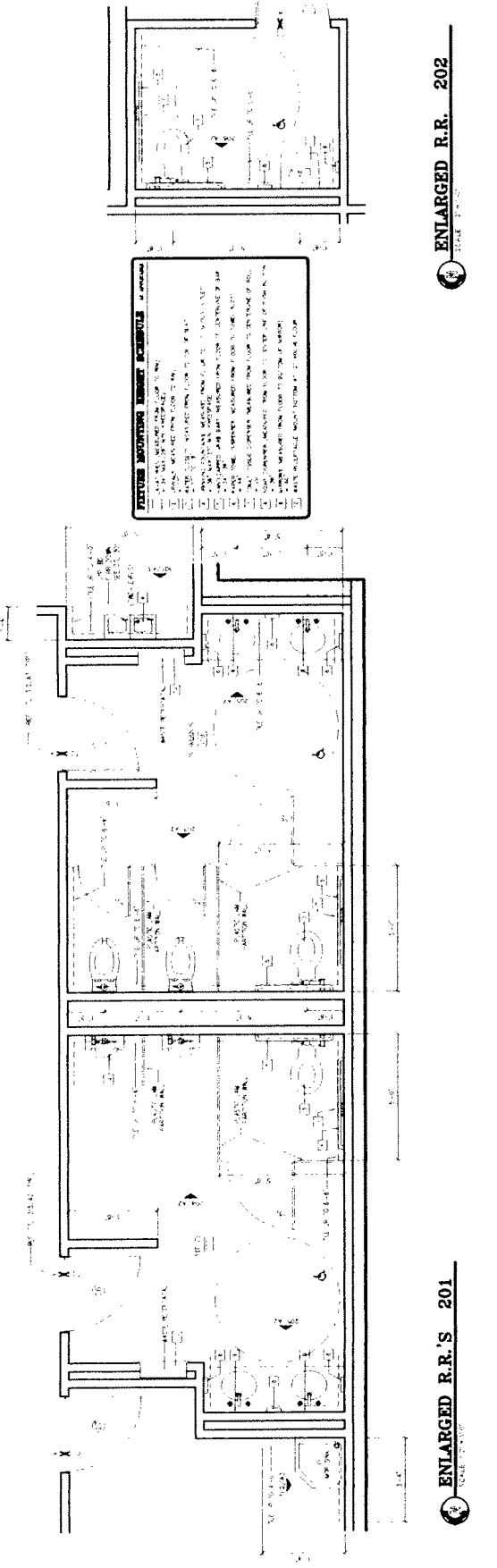


DOOR SCHEDULE

| NO. | TYPE | SIZE | FRAME | GLASS | GLASS TYPE | GLASS AREA | GLASS PERCENT | MARK |
|-----|---------|---------------|-------|-------|------------|------------|---------------|------|
| 1 | SWING | 3'-0" x 7'-0" | ALUM. | GLASS | GLASS | 21.00 | 70.00 | 1.0 |
| 2 | SLIDING | 3'-0" x 7'-0" | ALUM. | GLASS | GLASS | 21.00 | 70.00 | 1.0 |
| 3 | SWING | 3'-0" x 7'-0" | ALUM. | GLASS | GLASS | 21.00 | 70.00 | 1.0 |
| 4 | SWING | 3'-0" x 7'-0" | ALUM. | GLASS | GLASS | 21.00 | 70.00 | 1.0 |
| 5 | SWING | 3'-0" x 7'-0" | ALUM. | GLASS | GLASS | 21.00 | 70.00 | 1.0 |
| 6 | SWING | 3'-0" x 7'-0" | ALUM. | GLASS | GLASS | 21.00 | 70.00 | 1.0 |
| 7 | SWING | 3'-0" x 7'-0" | ALUM. | GLASS | GLASS | 21.00 | 70.00 | 1.0 |
| 8 | SWING | 3'-0" x 7'-0" | ALUM. | GLASS | GLASS | 21.00 | 70.00 | 1.0 |
| 9 | SWING | 3'-0" x 7'-0" | ALUM. | GLASS | GLASS | 21.00 | 70.00 | 1.0 |
| 10 | SWING | 3'-0" x 7'-0" | ALUM. | GLASS | GLASS | 21.00 | 70.00 | 1.0 |
| 11 | SWING | 3'-0" x 7'-0" | ALUM. | GLASS | GLASS | 21.00 | 70.00 | 1.0 |
| 12 | SWING | 3'-0" x 7'-0" | ALUM. | GLASS | GLASS | 21.00 | 70.00 | 1.0 |
| 13 | SWING | 3'-0" x 7'-0" | ALUM. | GLASS | GLASS | 21.00 | 70.00 | 1.0 |
| 14 | SWING | 3'-0" x 7'-0" | ALUM. | GLASS | GLASS | 21.00 | 70.00 | 1.0 |
| 15 | SWING | 3'-0" x 7'-0" | ALUM. | GLASS | GLASS | 21.00 | 70.00 | 1.0 |
| 16 | SWING | 3'-0" x 7'-0" | ALUM. | GLASS | GLASS | 21.00 | 70.00 | 1.0 |
| 17 | SWING | 3'-0" x 7'-0" | ALUM. | GLASS | GLASS | 21.00 | 70.00 | 1.0 |
| 18 | SWING | 3'-0" x 7'-0" | ALUM. | GLASS | GLASS | 21.00 | 70.00 | 1.0 |
| 19 | SWING | 3'-0" x 7'-0" | ALUM. | GLASS | GLASS | 21.00 | 70.00 | 1.0 |
| 20 | SWING | 3'-0" x 7'-0" | ALUM. | GLASS | GLASS | 21.00 | 70.00 | 1.0 |
| 21 | SWING | 3'-0" x 7'-0" | ALUM. | GLASS | GLASS | 21.00 | 70.00 | 1.0 |
| 22 | SWING | 3'-0" x 7'-0" | ALUM. | GLASS | GLASS | 21.00 | 70.00 | 1.0 |
| 23 | SWING | 3'-0" x 7'-0" | ALUM. | GLASS | GLASS | 21.00 | 70.00 | 1.0 |
| 24 | SWING | 3'-0" x 7'-0" | ALUM. | GLASS | GLASS | 21.00 | 70.00 | 1.0 |
| 25 | SWING | 3'-0" x 7'-0" | ALUM. | GLASS | GLASS | 21.00 | 70.00 | 1.0 |
| 26 | SWING | 3'-0" x 7'-0" | ALUM. | GLASS | GLASS | 21.00 | 70.00 | 1.0 |
| 27 | SWING | 3'-0" x 7'-0" | ALUM. | GLASS | GLASS | 21.00 | 70.00 | 1.0 |
| 28 | SWING | 3'-0" x 7'-0" | ALUM. | GLASS | GLASS | 21.00 | 70.00 | 1.0 |
| 29 | SWING | 3'-0" x 7'-0" | ALUM. | GLASS | GLASS | 21.00 | 70.00 | 1.0 |
| 30 | SWING | 3'-0" x 7'-0" | ALUM. | GLASS | GLASS | 21.00 | 70.00 | 1.0 |

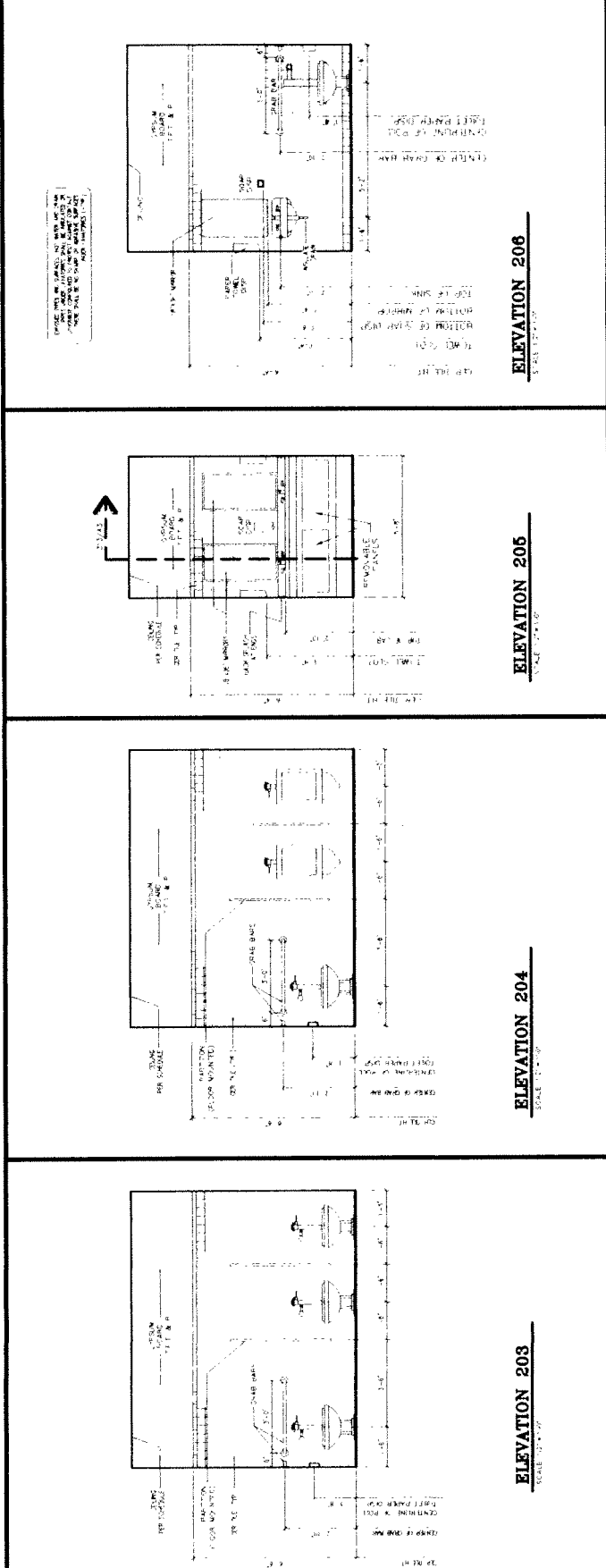


DOOR TYPES
 SCALE 1/8" = 1'-0"



ENLARGED R.R.'S 202
SCALE: 1/8" = 1'-0"

ENLARGED R.R.'S 201
SCALE: 1/8" = 1'-0"

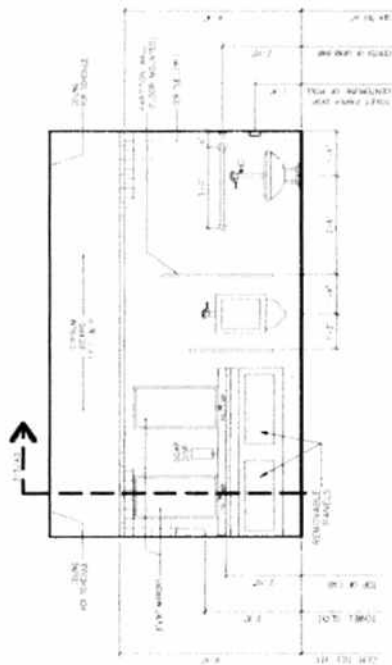


ELEVATION 206
SCALE: 1/8" = 1'-0"

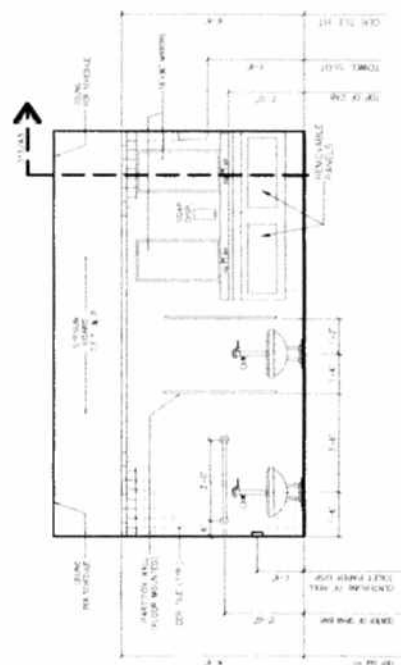
ELEVATION 205
SCALE: 1/8" = 1'-0"

ELEVATION 204
SCALE: 1/8" = 1'-0"

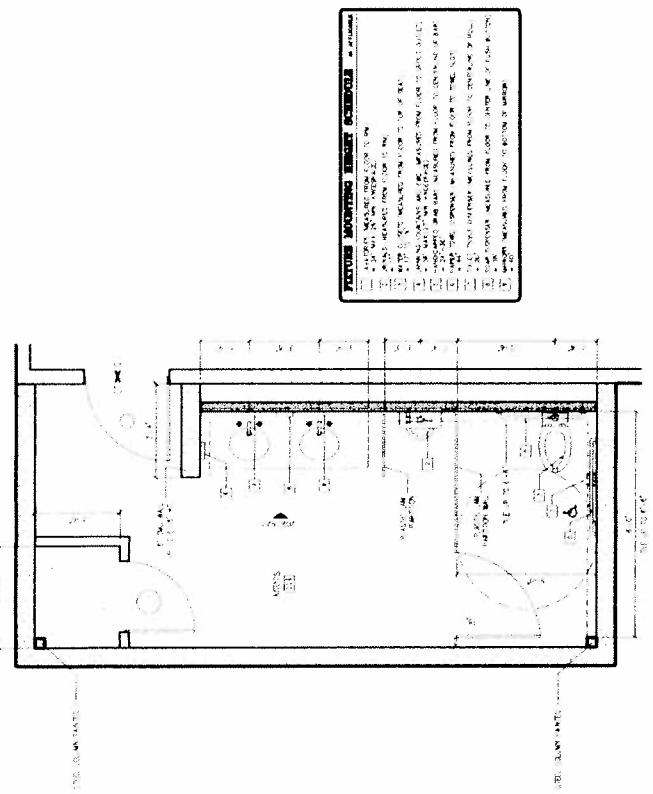
ELEVATION 203
SCALE: 1/8" = 1'-0"



ELEVATION 209

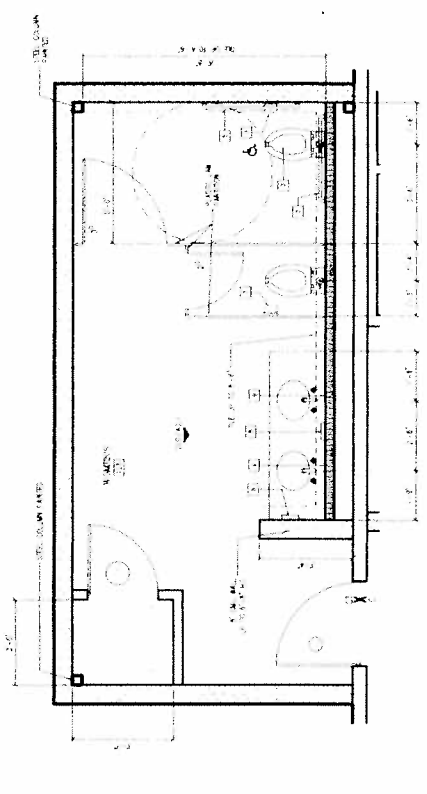


ELEVATION 210

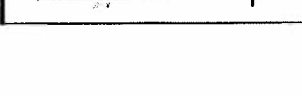
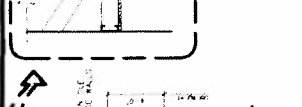
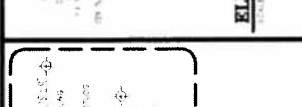
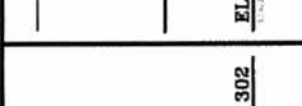
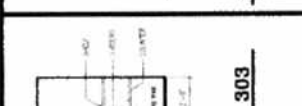
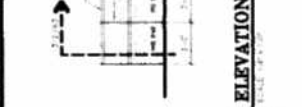
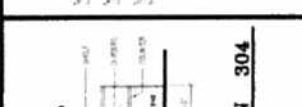
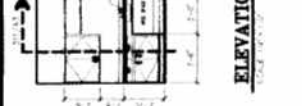
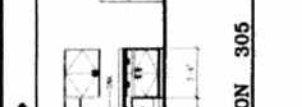
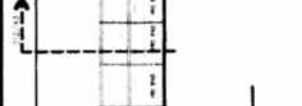


ENLARGED R.R. PLAN 207

- FURNITURE MOUNTING HEIGHTS - CONTINUED**
- 1. ALL FURNITURE MOUNTING HEIGHTS ARE TO FINISH FLOOR UNLESS NOTED OTHERWISE.
 - 2. ALL DIMENSIONS ARE TO FACE UNLESS NOTED OTHERWISE.
 - 3. ALL DIMENSIONS ARE TO FACE UNLESS NOTED OTHERWISE.
 - 4. ALL DIMENSIONS ARE TO FACE UNLESS NOTED OTHERWISE.
 - 5. ALL DIMENSIONS ARE TO FACE UNLESS NOTED OTHERWISE.
 - 6. ALL DIMENSIONS ARE TO FACE UNLESS NOTED OTHERWISE.
 - 7. ALL DIMENSIONS ARE TO FACE UNLESS NOTED OTHERWISE.
 - 8. ALL DIMENSIONS ARE TO FACE UNLESS NOTED OTHERWISE.
 - 9. ALL DIMENSIONS ARE TO FACE UNLESS NOTED OTHERWISE.
 - 10. ALL DIMENSIONS ARE TO FACE UNLESS NOTED OTHERWISE.

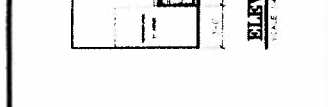
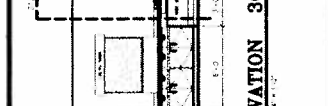
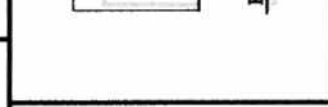
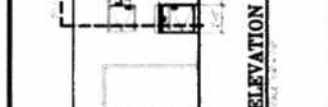
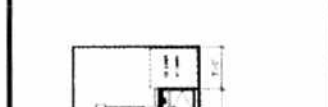


ENLARGED R.R. PLAN 208

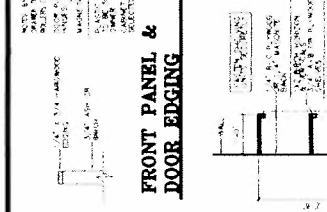
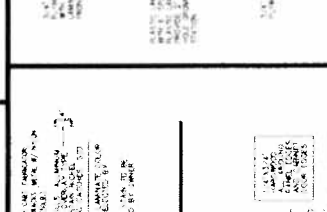
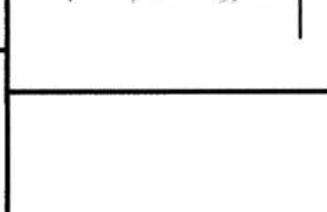
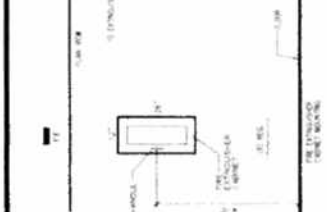


MEETING HALL / PAVILION
 HIDALGO COUNTY PRECINCT 3
 HIDALGO COUNTY, TEXAS

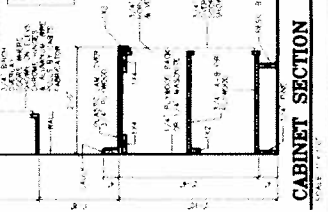
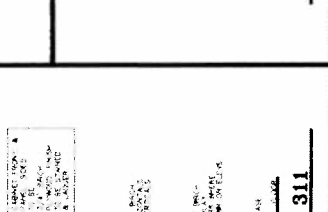
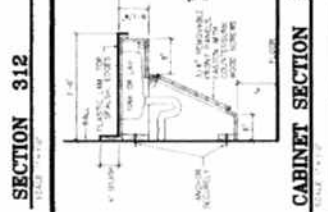
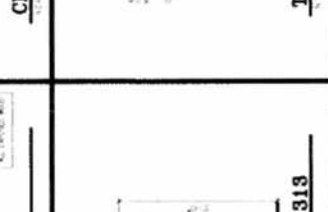
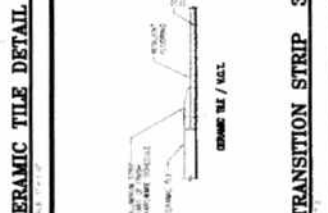
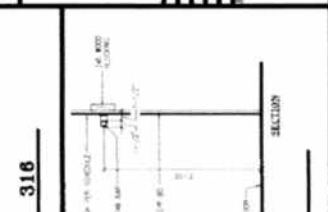
SCALE: 1/4" = 1'-0"
 SECTION 301



SCALE: 1/4" = 1'-0"
 SECTION 301



SCALE: 1/4" = 1'-0"
 SECTION 301



SCALE: 1/4" = 1'-0"
 SECTION 301

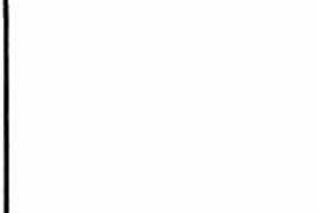


TABLE 1

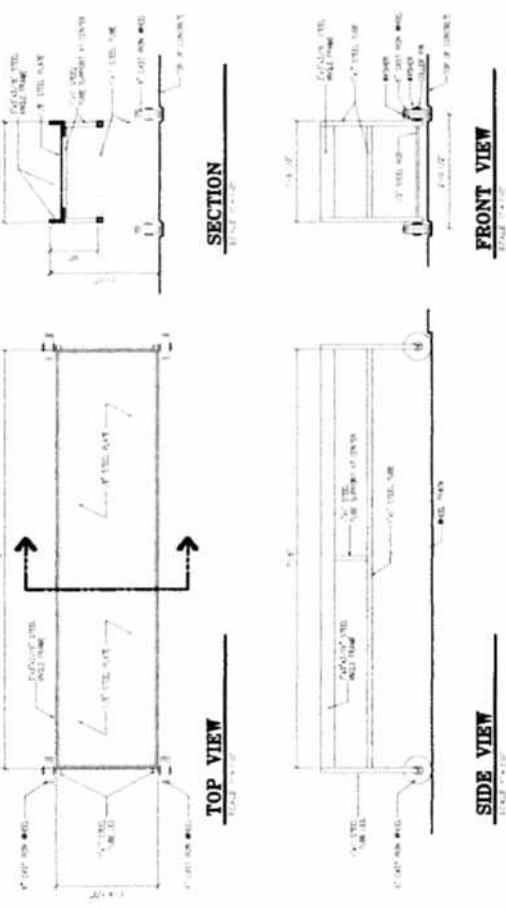
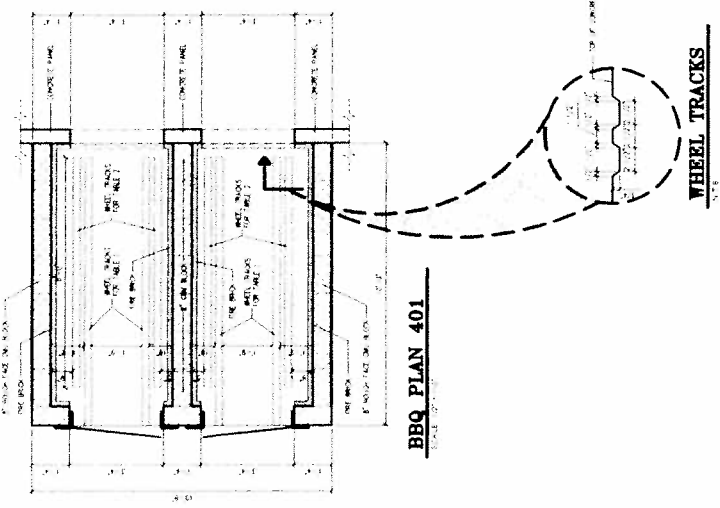
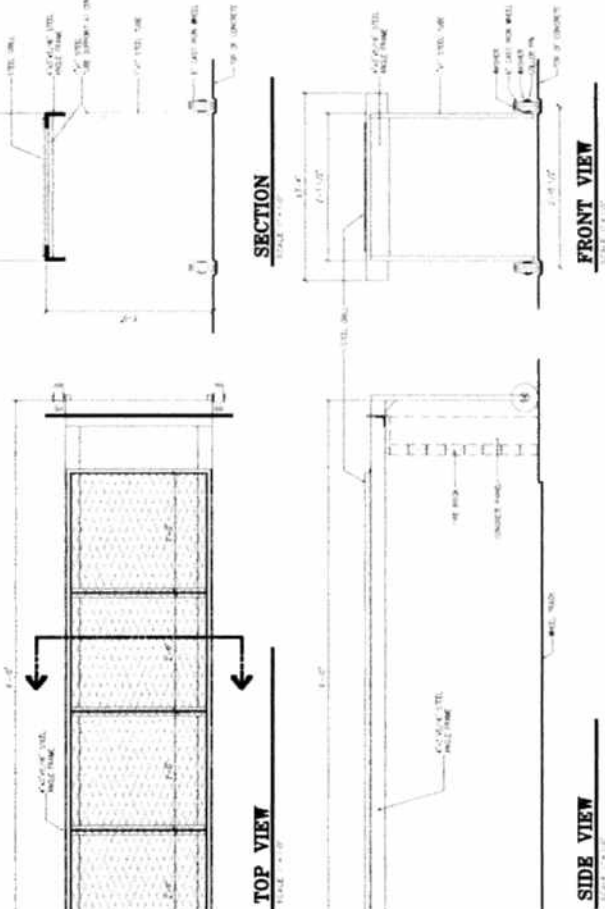
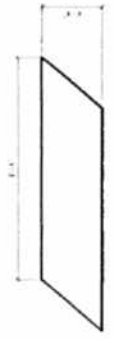


TABLE 2



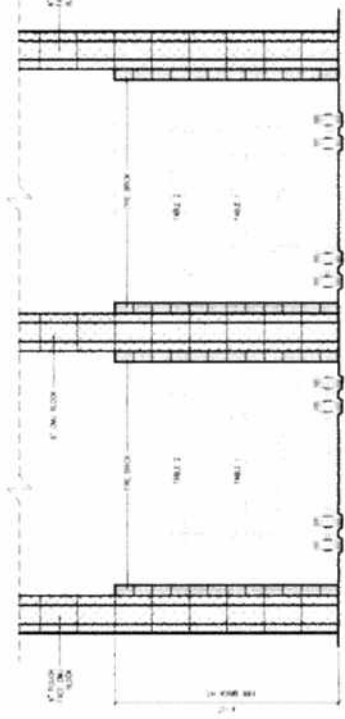
24 GA. METAL COVER - (2) REQUIRED
 403A



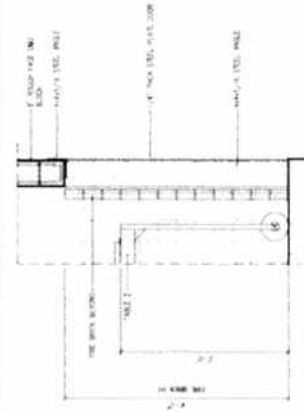
SECTION 403



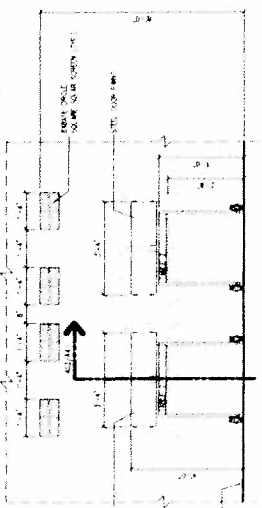
SECTION 404



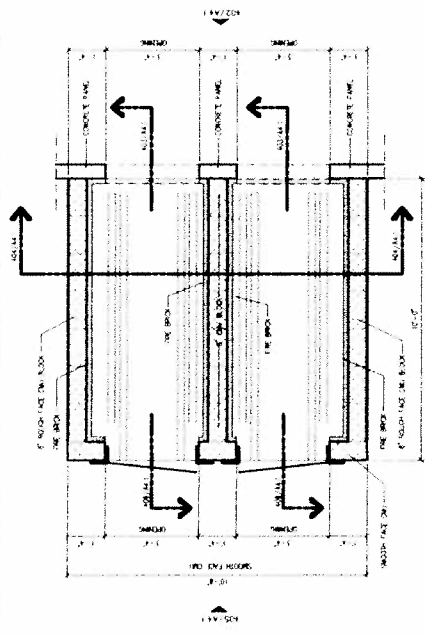
SECTION 406



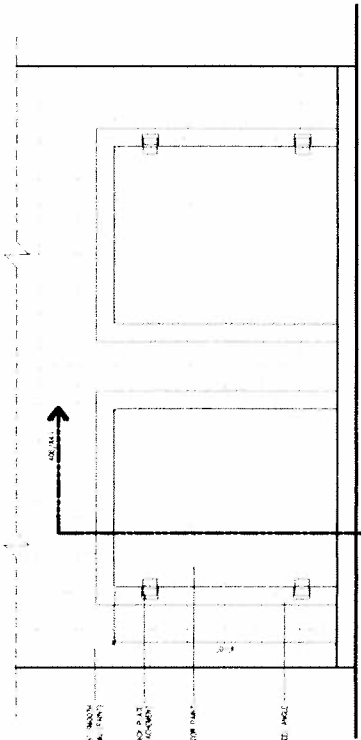
ELEVATION 402



BBQ PLAN



ELEVATION 405



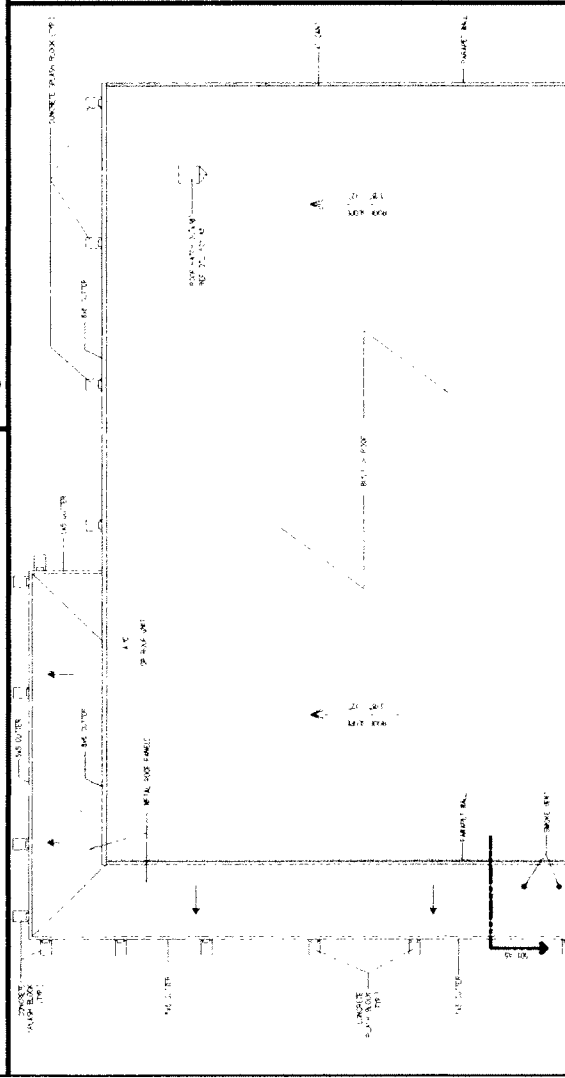
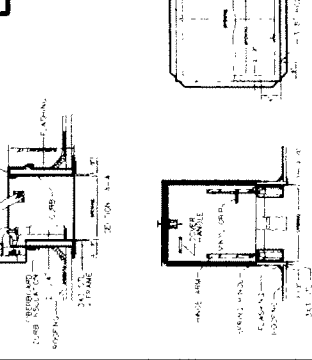
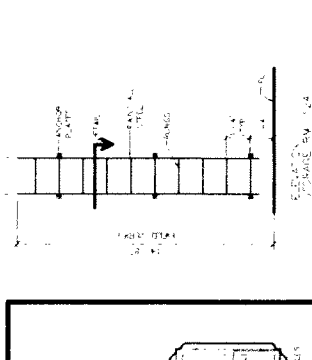
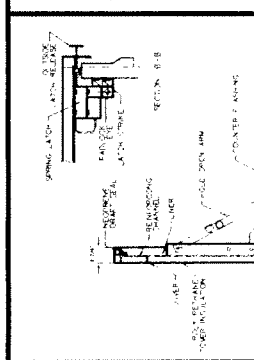
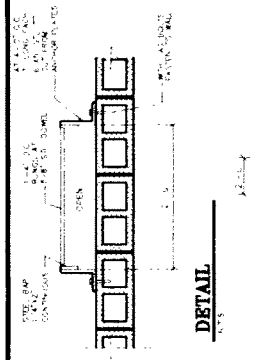
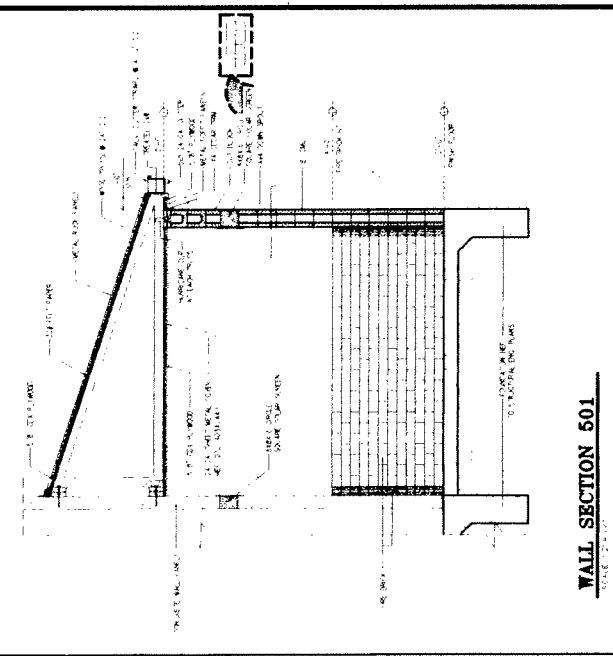
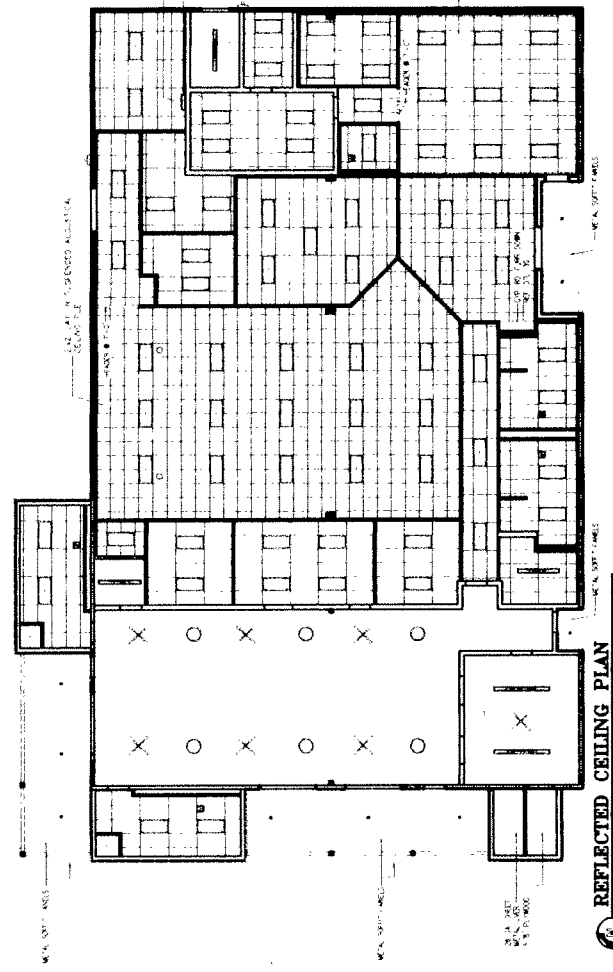
MEETING HALL / PAVILION
 HIDALGO COUNTY PRECINCT 3
 HIDALGO COUNTY, TEXAS

A5

AGARD
 ARCHITECTS
 1400 WEST 10TH AVENUE
 DENVER, CO 80202

DATE: 11/11/11
 DRAWN BY: [Name]
 CHECKED BY: [Name]
 PROJECT NO: [Number]

- 1. UNFINISHED FLOOR
- 2. FINISHED FLOOR
- 3. CEILING
- 4. ROOF
- 5. WALL
- 6. WINDOW
- 7. DOOR
- 8. STAIR
- 9. ELEVATOR
- 10. MECHANICAL
- 11. ELECTRICAL
- 12. PLUMBING
- 13. TELEPHONE
- 14. SIGN
- 15. FURNITURE
- 16. OTHER

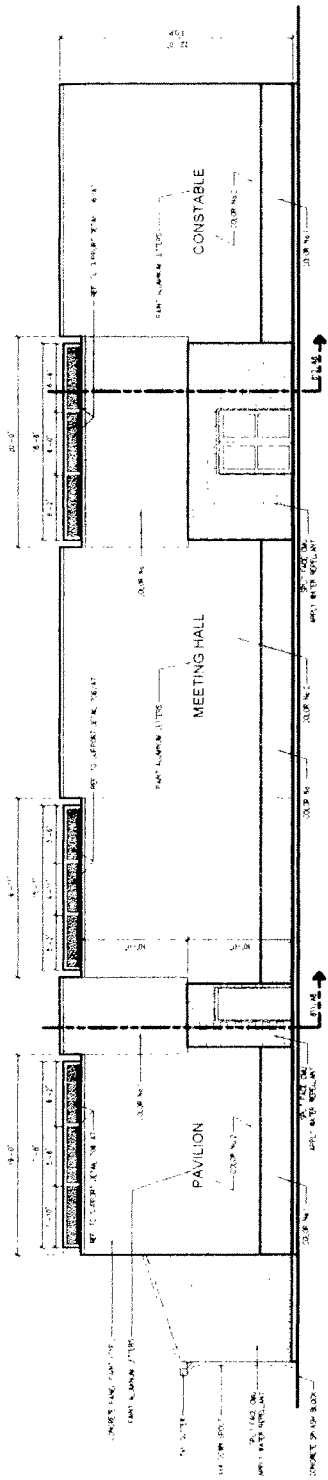


ALL UNFINISHED ROOF SURFACES SHALL BE PROTECTED FROM WEATHER DAMAGE.

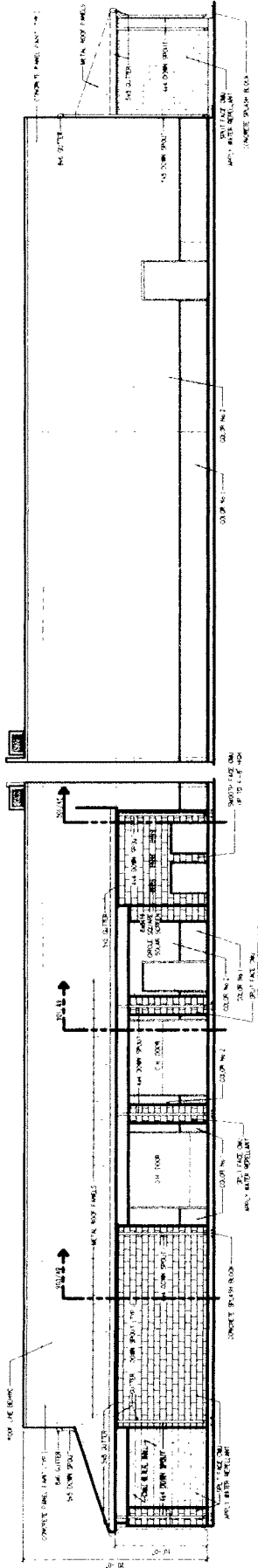
ALL UNFINISHED ROOF SURFACES SHALL BE PROTECTED FROM WEATHER DAMAGE.

ALL UNFINISHED ROOF SURFACES SHALL BE PROTECTED FROM WEATHER DAMAGE.

| | |
|-------------|-------------------------|
| PROJECT | MEETING HALL / PAVILION |
| DATE | 10/15/11 |
| SCALE | AS SHOWN |
| DESIGNED BY | AGARD ARCHITECTURE |
| DRAWN BY | AGARD ARCHITECTURE |
| CHECKED BY | AGARD ARCHITECTURE |
| DATE | 10/15/11 |

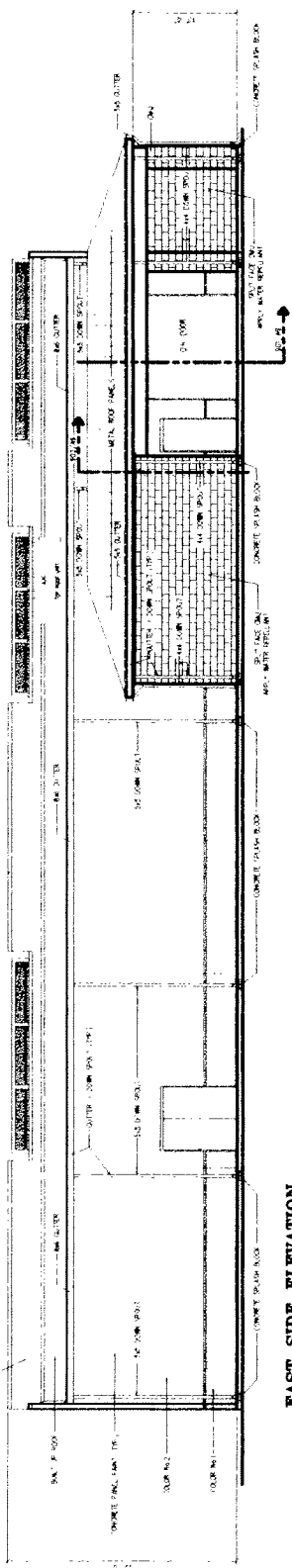


WEST SIDE ELEVATION
 SCALE 1/8" = 1'-0"



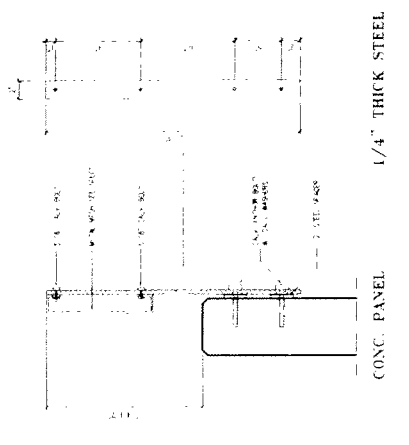
SOUTH SIDE ELEVATION
 SCALE 1/8" = 1'-0"

NORTH SIDE ELEVATION
 SCALE 1/8" = 1'-0"

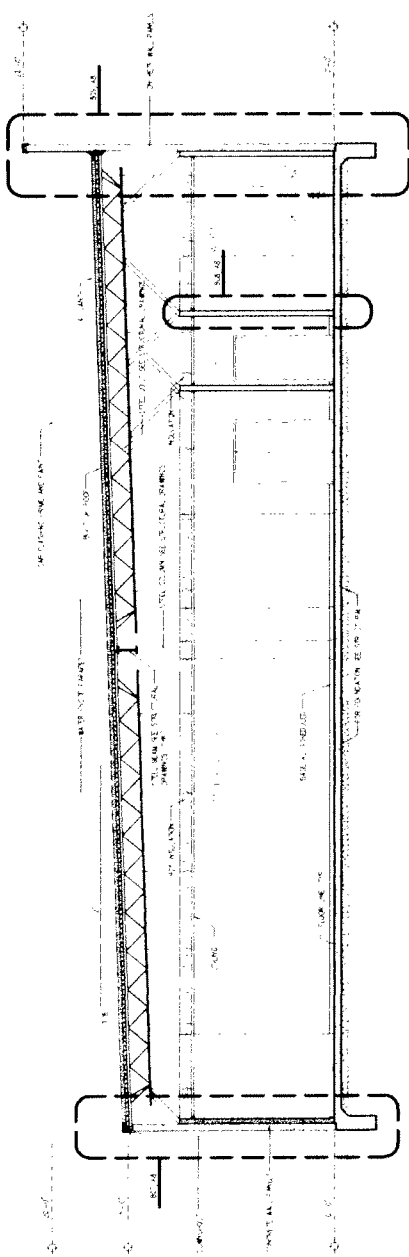


EAST SIDE ELEVATION
 SCALE 1/8" = 1'-0"

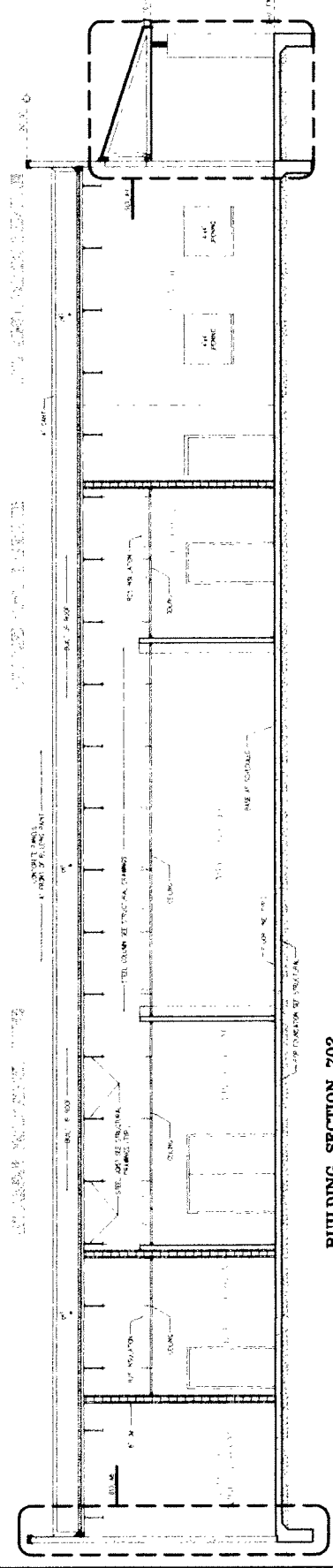
| | |
|--------------|---------------------------|
| PROJECT | MEETING HALL / PAVILION |
| DATE | 11/15/2017 |
| DESIGNER | AGC |
| CLIENT | HIDALGO COUNTY PRECINCT 3 |
| LOCATION | HIDALGO COUNTY, TEXAS |
| SCALE | AS SHOWN |
| PROJECT NO. | 17-001 |
| DATE PLOTTED | 11/15/2017 10:00 AM |
| PLotted BY | AGC |



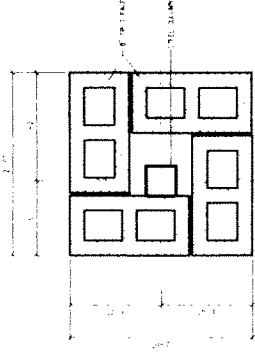
SUPPORT DETAIL 706



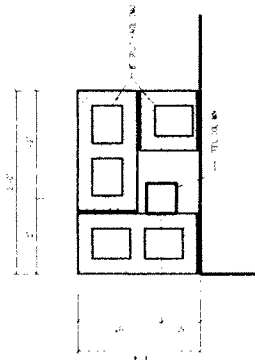
BUILDING SECTION 701



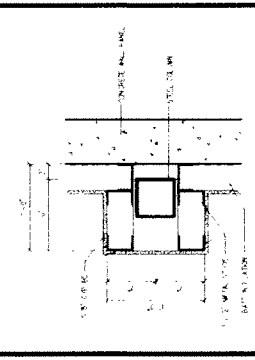
BUILDING SECTION 702



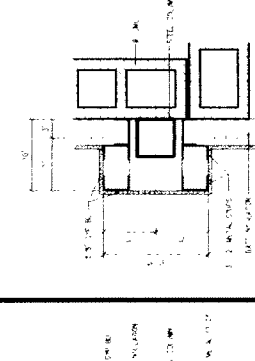
SECTIONS 707



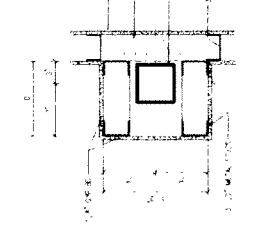
SECTIONS 708



SECTIONS 709

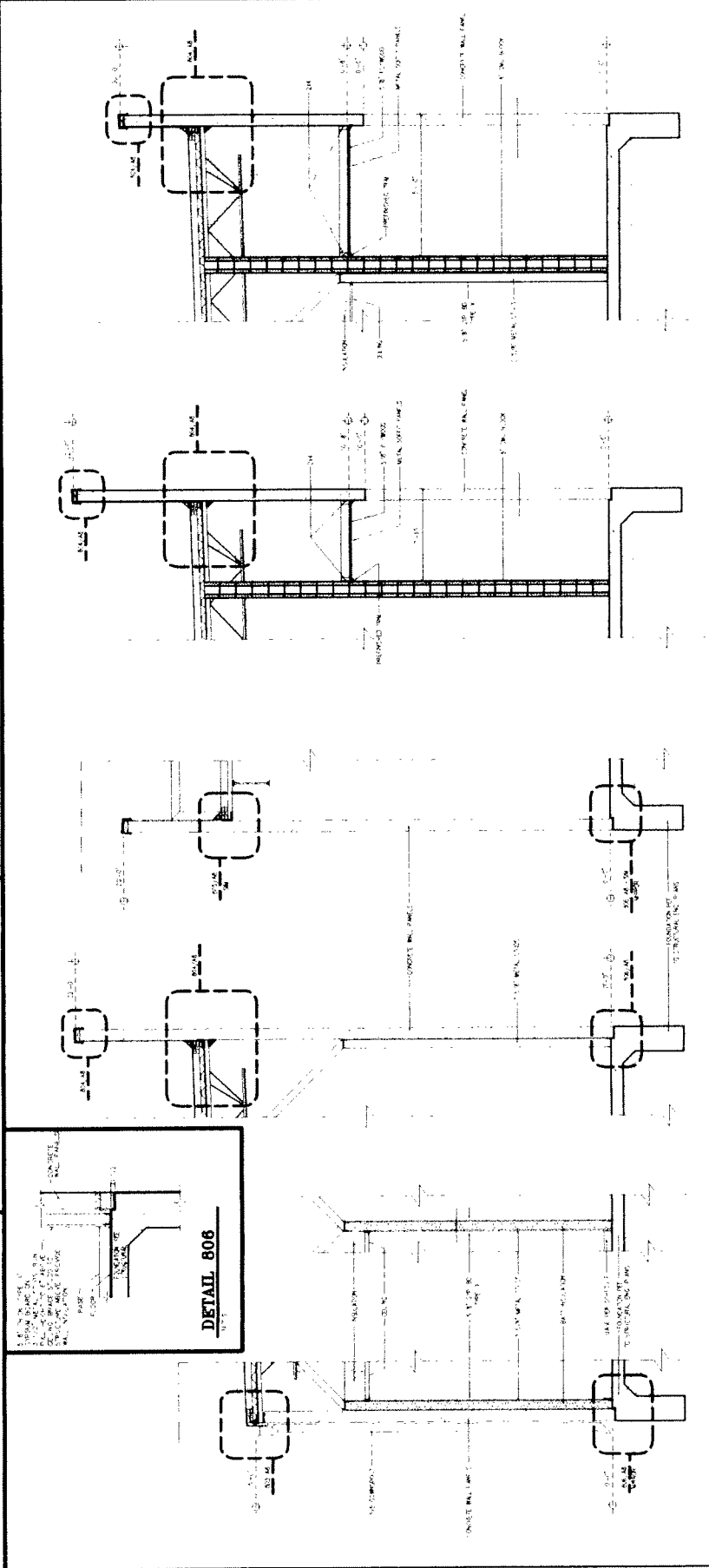
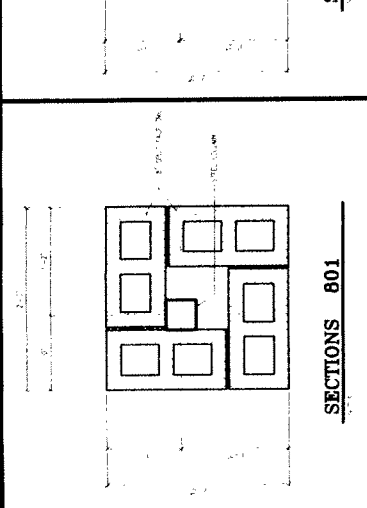
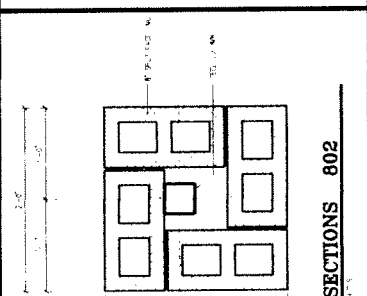
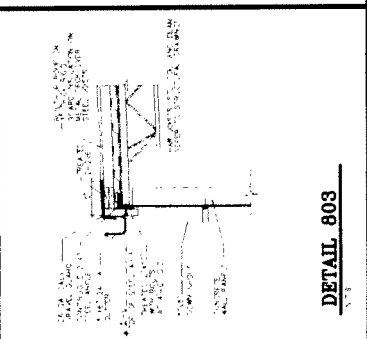
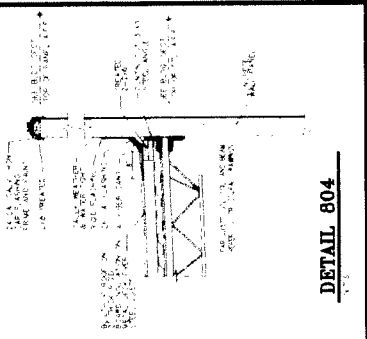
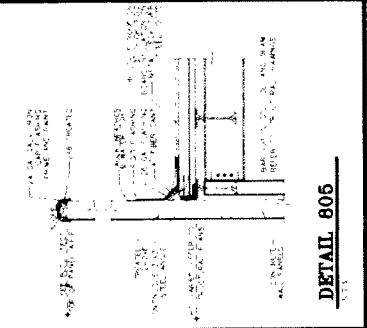


SECTIONS 704



SECTIONS 703

| | |
|---------|---------------------------|
| DATE | 12/20/20 |
| SCALE | 1/8" = 1'-0" |
| PROJECT | HIDALGO COUNTY PRECINCT 3 |



WALL SECTION 812

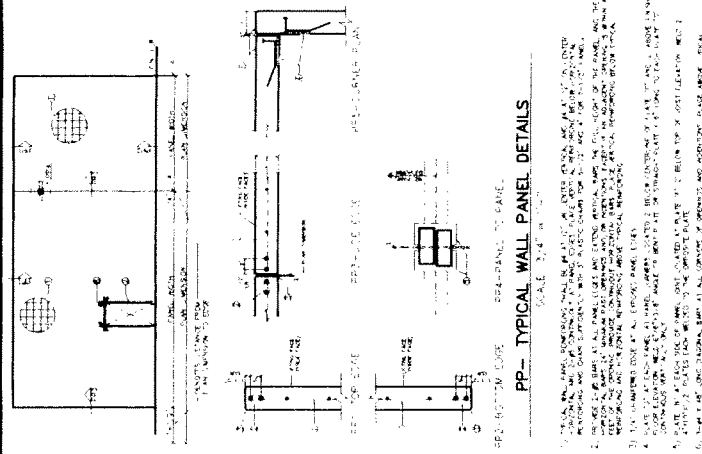
WALL SECTION 811

WALL SECTION 810

WALL SECTION 809

WALL SECTION 808

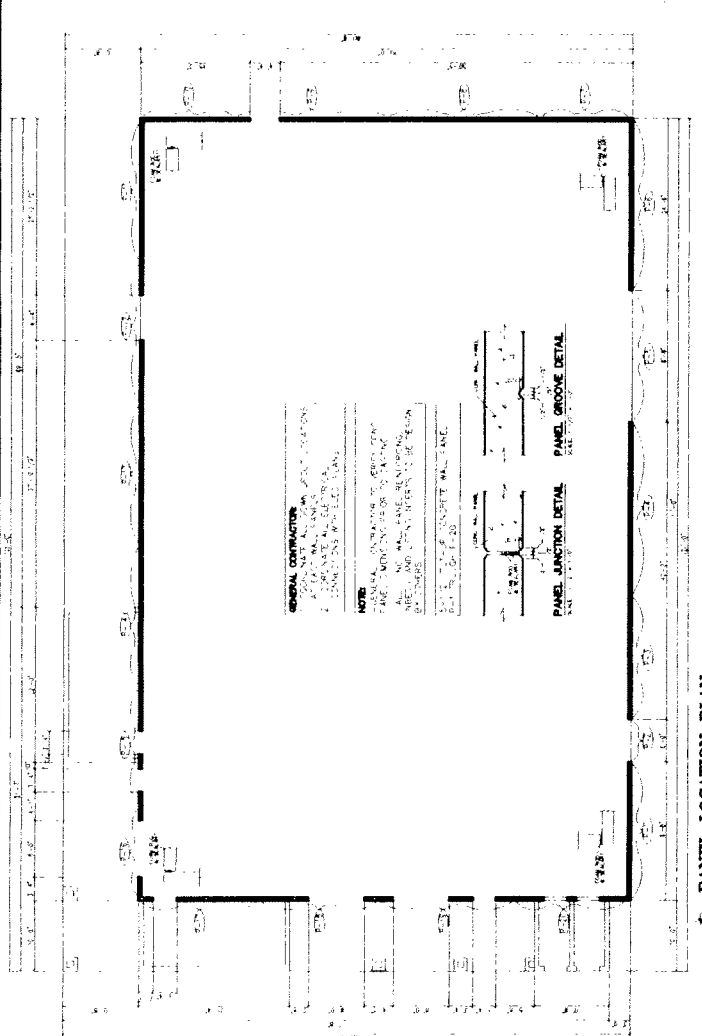
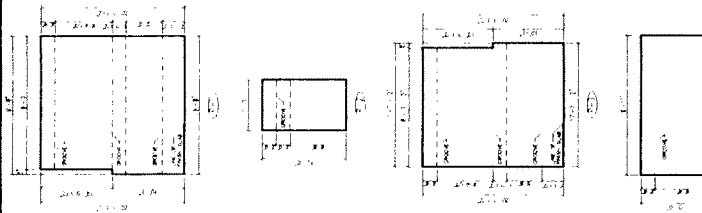
WALL SECTION 807



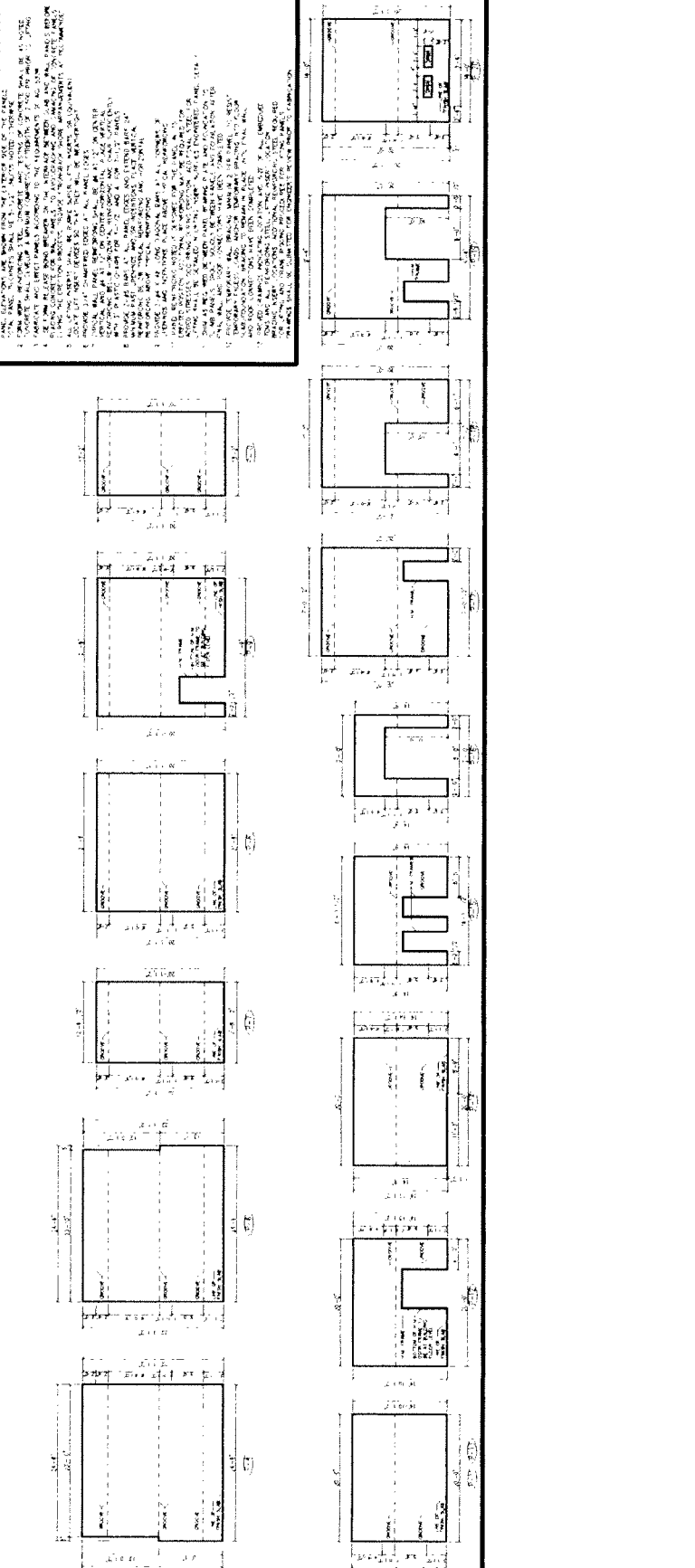
WALL PANELS

1. SEE NOTES AND SPECIFICATIONS FOR MATERIALS, FINISHES, AND INSTALLATION REQUIREMENTS.

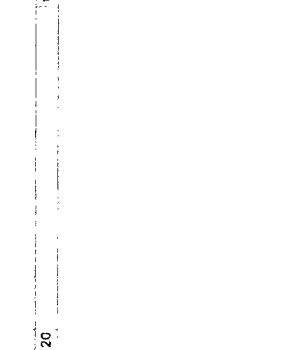
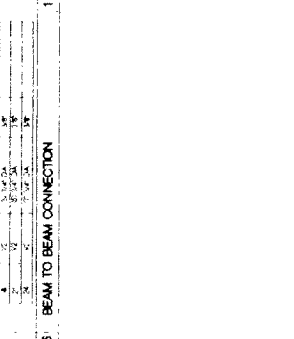
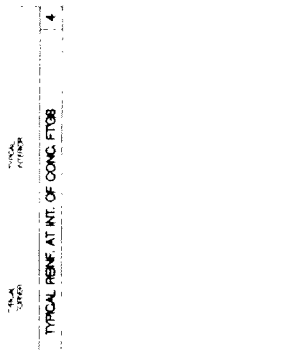
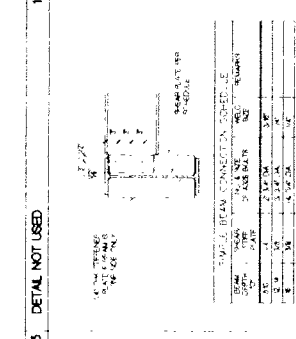
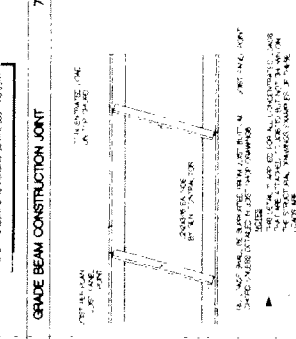
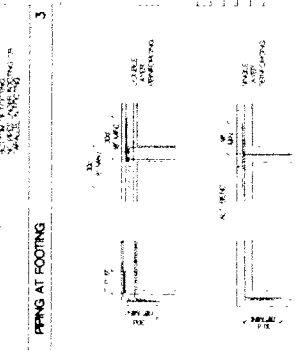
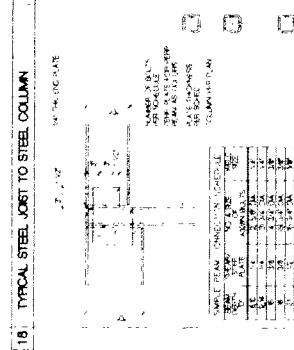
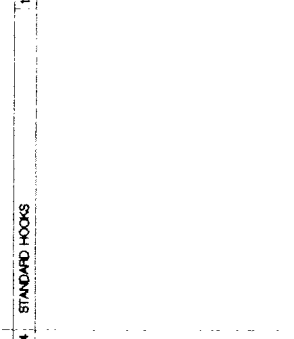
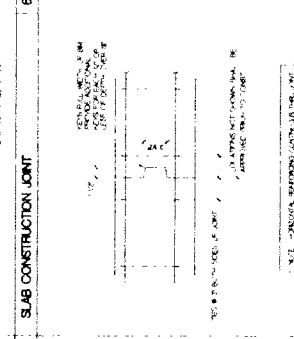
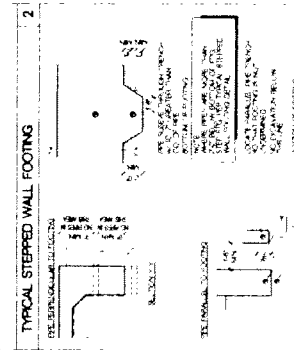
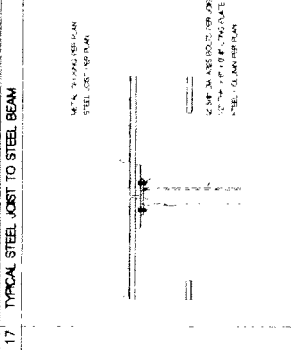
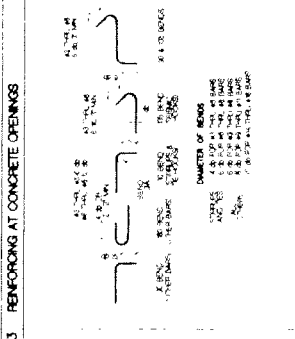
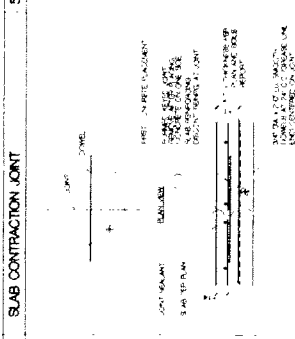
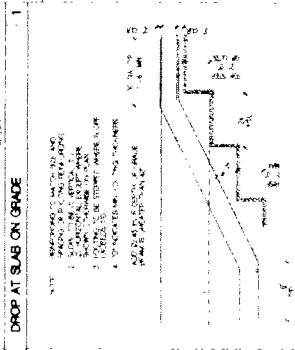
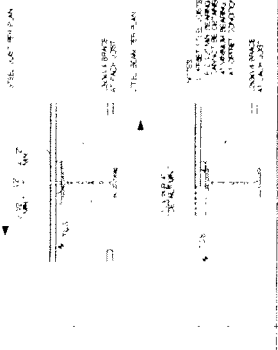
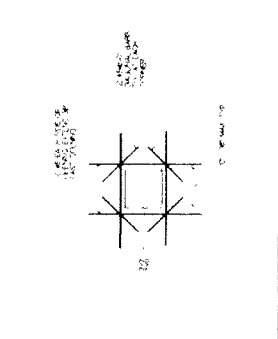
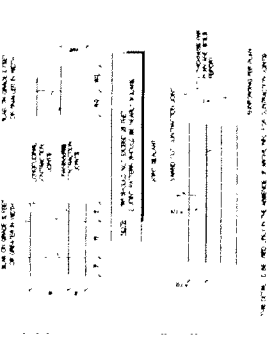
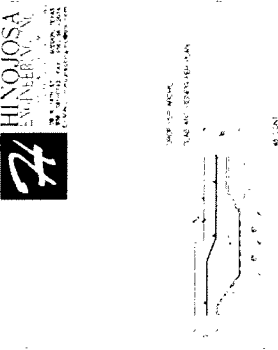
2. WALL PANELS SHALL BE 1/2\"/>

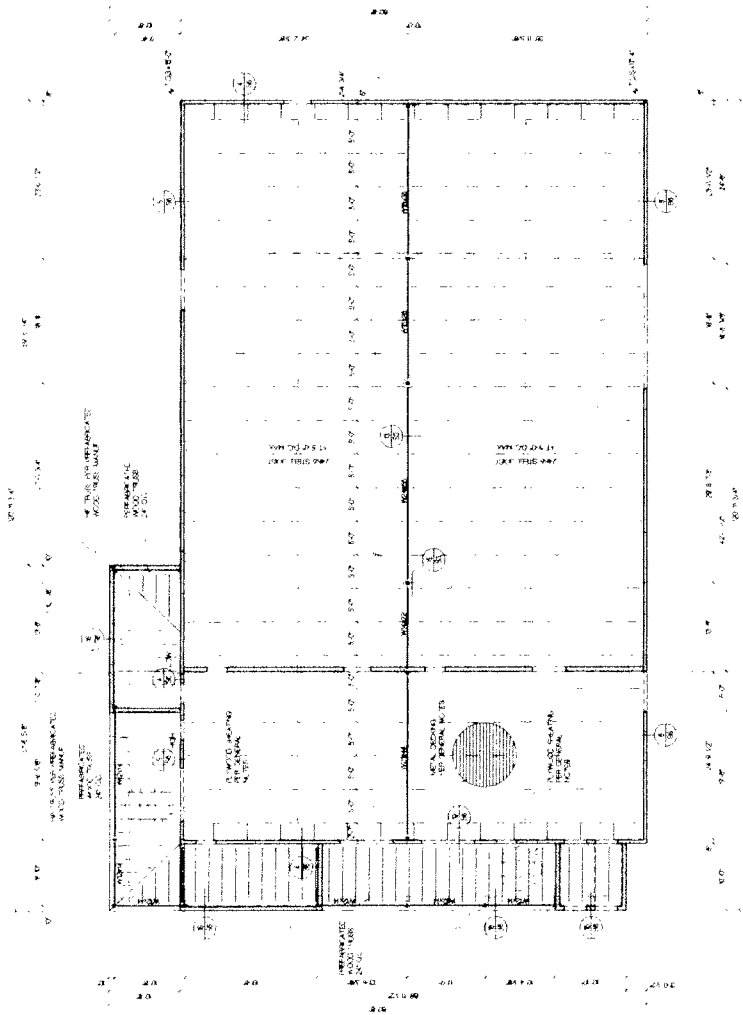


PANEL LOCATION PLAN



WALL PANELS





FRAMING NOTES

1. SEE GENERAL NOTES SHEET 11.10
2. ALL DIMENSIONS ARE IN FEET UNLESS OTHERWISE NOTED
3. ALL DIMENSIONS ARE TO FACE UNLESS OTHERWISE NOTED
4. ALL DIMENSIONS ARE TO CENTERLINE UNLESS OTHERWISE NOTED
5. ALL DIMENSIONS ARE TO CENTERLINE UNLESS OTHERWISE NOTED
6. ALL DIMENSIONS ARE TO CENTERLINE UNLESS OTHERWISE NOTED
7. ALL DIMENSIONS ARE TO CENTERLINE UNLESS OTHERWISE NOTED
8. ALL DIMENSIONS ARE TO CENTERLINE UNLESS OTHERWISE NOTED
9. ALL DIMENSIONS ARE TO CENTERLINE UNLESS OTHERWISE NOTED
10. ALL DIMENSIONS ARE TO CENTERLINE UNLESS OTHERWISE NOTED

S5

FRAMING PLAN

FOOTING SCHEDULE

| TYPE | A | B | C | D | E | F | G | H | I |
|------|-----|-----|-----|-----|-----|-----|-----|-----|-----|
| 1 | 12" | 12" | 12" | 12" | 12" | 12" | 12" | 12" | 12" |
| 2 | 12" | 12" | 12" | 12" | 12" | 12" | 12" | 12" | 12" |
| 3 | 12" | 12" | 12" | 12" | 12" | 12" | 12" | 12" | 12" |
| 4 | 12" | 12" | 12" | 12" | 12" | 12" | 12" | 12" | 12" |
| 5 | 12" | 12" | 12" | 12" | 12" | 12" | 12" | 12" | 12" |
| 6 | 12" | 12" | 12" | 12" | 12" | 12" | 12" | 12" | 12" |
| 7 | 12" | 12" | 12" | 12" | 12" | 12" | 12" | 12" | 12" |
| 8 | 12" | 12" | 12" | 12" | 12" | 12" | 12" | 12" | 12" |
| 9 | 12" | 12" | 12" | 12" | 12" | 12" | 12" | 12" | 12" |
| 10 | 12" | 12" | 12" | 12" | 12" | 12" | 12" | 12" | 12" |
| 11 | 12" | 12" | 12" | 12" | 12" | 12" | 12" | 12" | 12" |
| 12 | 12" | 12" | 12" | 12" | 12" | 12" | 12" | 12" | 12" |
| 13 | 12" | 12" | 12" | 12" | 12" | 12" | 12" | 12" | 12" |
| 14 | 12" | 12" | 12" | 12" | 12" | 12" | 12" | 12" | 12" |
| 15 | 12" | 12" | 12" | 12" | 12" | 12" | 12" | 12" | 12" |
| 16 | 12" | 12" | 12" | 12" | 12" | 12" | 12" | 12" | 12" |
| 17 | 12" | 12" | 12" | 12" | 12" | 12" | 12" | 12" | 12" |
| 18 | 12" | 12" | 12" | 12" | 12" | 12" | 12" | 12" | 12" |
| 19 | 12" | 12" | 12" | 12" | 12" | 12" | 12" | 12" | 12" |
| 20 | 12" | 12" | 12" | 12" | 12" | 12" | 12" | 12" | 12" |

1. ALL FOOTINGS SHALL BE CONCRETE ON GRADE UNLESS OTHERWISE NOTED.

2. ALL FOOTINGS SHALL BE 4" MIN. THICK UNLESS OTHERWISE NOTED.

3. ALL FOOTINGS SHALL BE 12" MIN. WIDE UNLESS OTHERWISE NOTED.

4. ALL FOOTINGS SHALL BE 12" MIN. HIGH UNLESS OTHERWISE NOTED.

5. ALL FOOTINGS SHALL BE 12" MIN. DEEP UNLESS OTHERWISE NOTED.

6. ALL FOOTINGS SHALL BE 12" MIN. LONG UNLESS OTHERWISE NOTED.

7. ALL FOOTINGS SHALL BE 12" MIN. SPACED UNLESS OTHERWISE NOTED.

8. ALL FOOTINGS SHALL BE 12" MIN. SPACED UNLESS OTHERWISE NOTED.

9. ALL FOOTINGS SHALL BE 12" MIN. SPACED UNLESS OTHERWISE NOTED.

10. ALL FOOTINGS SHALL BE 12" MIN. SPACED UNLESS OTHERWISE NOTED.

11. ALL FOOTINGS SHALL BE 12" MIN. SPACED UNLESS OTHERWISE NOTED.

12. ALL FOOTINGS SHALL BE 12" MIN. SPACED UNLESS OTHERWISE NOTED.

13. ALL FOOTINGS SHALL BE 12" MIN. SPACED UNLESS OTHERWISE NOTED.

14. ALL FOOTINGS SHALL BE 12" MIN. SPACED UNLESS OTHERWISE NOTED.

15. ALL FOOTINGS SHALL BE 12" MIN. SPACED UNLESS OTHERWISE NOTED.

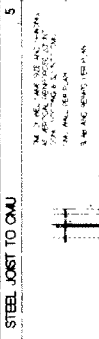
16. ALL FOOTINGS SHALL BE 12" MIN. SPACED UNLESS OTHERWISE NOTED.

17. ALL FOOTINGS SHALL BE 12" MIN. SPACED UNLESS OTHERWISE NOTED.

18. ALL FOOTINGS SHALL BE 12" MIN. SPACED UNLESS OTHERWISE NOTED.

19. ALL FOOTINGS SHALL BE 12" MIN. SPACED UNLESS OTHERWISE NOTED.

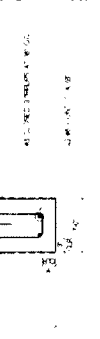
20. ALL FOOTINGS SHALL BE 12" MIN. SPACED UNLESS OTHERWISE NOTED.



9 STEEL JOIST TO CMU



10 MILLED BEAM FOOTING



11 EXTERIOR GRADE BEAM



12 INTERIOR GRADE BEAM



13 WOOD TRUSS TO STEEL BEAM



14 FOOTING AT BRICK PIER



15 WOOD TRUSS TO TILT-UP PANEL



16 DETAIL NOT USED



17 WOOD TRUSS TO CMU WALL



18 EXTERIOR GRADE BEAM



19 STEEL JOIST TO TILT-UP PANEL

20 BASE PLATE



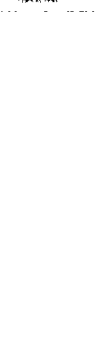
21 EXTERIOR GRADE BEAM



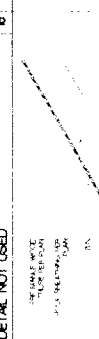
22 INTERIOR GRADE BEAM



23 STEEL JOIST TO TILT-UP PANEL



24 INTERIOR GRADE BEAM



25 DETAIL NOT USED



26 STEEL JOIST TO TILT-UP PANEL



27 INTERIOR GRADE BEAM



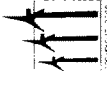
28 STEEL JOIST TO TILT-UP PANEL



29 INTERIOR GRADE BEAM

M1

| | |
|--------------|--------|
| PROJECT NO. | 17-114 |
| DATE | 3-1-18 |
| DRAWN BY | ... |
| CHECKED BY | ... |
| SCALE | ... |
| PROJECT NAME | ... |



PROJECT NO. 17-114
 DATE 3-1-18
 DRAWN BY
 CHECKED BY
 SCALE
 PROJECT NAME

MEETING HALL / PAVILION
 HIDALGO COUNTY PRECINCT 3
 HIDALGO COUNTY, TEXAS

DATE: 3-1-18
 DRAWN BY: ...
 CHECKED BY: ...
 SCALE: ...
 PROJECT NAME: ...

ARCHITECT: ...
 PROJECT: ...
 SHEET: ...



FLOOR PLAN
 SCALE: 1/8" = 1'-0"

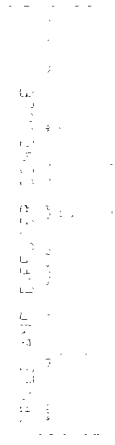
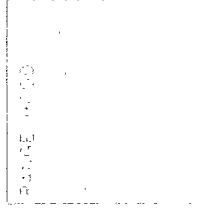
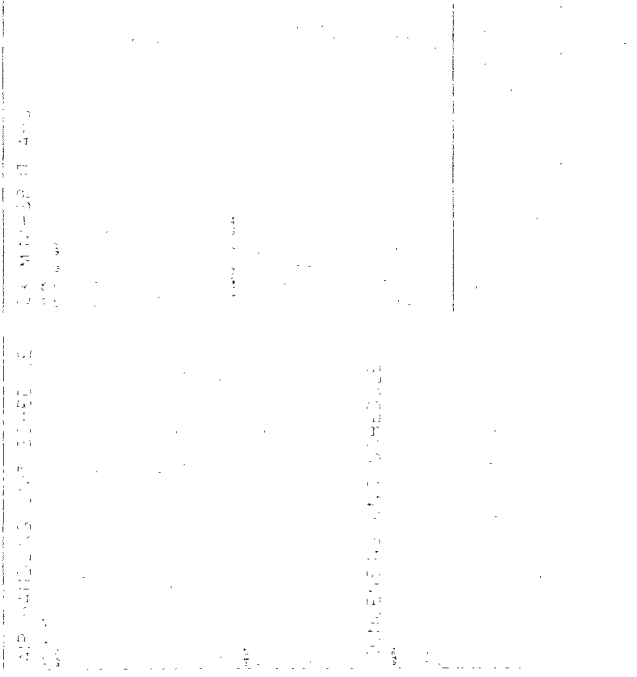
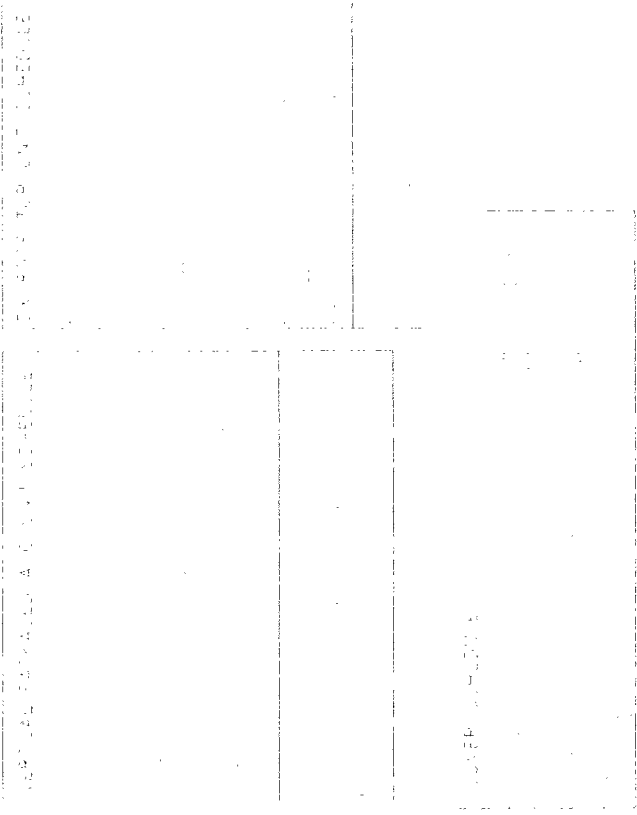
MEETING HALL / PAVILION
 HIDALGO COUNTY PRECINCT 3
 HIDALGO COUNTY, TEXAS

M2

| | |
|----------|----------------|
| DATE | 11/11/11 |
| BY | ALVIN |
| PROJECT | MEETING HALL |
| CLIENT | HIDALGO COUNTY |
| LOCATION | PRECINCT 3 |
| SCALE | AS SHOWN |
| PROJECT | MEETING HALL |



ALVIN CONSULTING ARCHITECTS
 500 N. W. 10th St.
 MIAMI, FL 33136
 (305) 575-1111



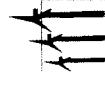
ALVIN CONSULTING ARCHITECTS
 500 N. W. 10th St.
 MIAMI, FL 33136
 (305) 575-1111

ALVIN CONSULTING ARCHITECTS
 500 N. W. 10th St.
 MIAMI, FL 33136
 (305) 575-1111

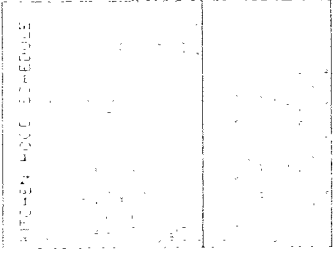
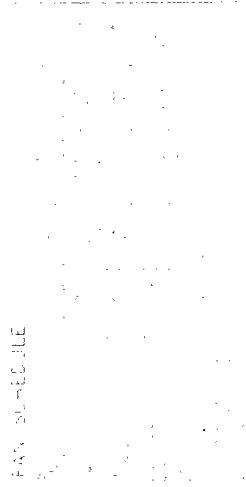
MEETING HALL / PAVILION
 HIDALGO COUNTY PRECINCT 3
 HIDALGO COUNTY, TEXAS

M3

PROJECT: M3
 DATE: 08/08/08
 DRAWN BY: [Name]
 CHECKED BY: [Name]
 FILE NAME: M3-3-PAVILION
 SHEET:



ARCHITECT: [Firm Name]
 1200 N. W. 48th St.
 WAKELIN, TEXAS
 76788-4451
 TEL: 817-424-1111
 FAX: 817-424-1112
 WWW: [Website]



ENERGY CODE: GENERAL NOTES

1. ALL MECHANICAL SYSTEMS SHALL BE DESIGNED TO MEET THE ENERGY REQUIREMENTS OF THE 2005 ENERGY CODE FOR TEXAS.

2. THE DESIGNER SHALL PROVIDE A MECHANICAL SYSTEM DESIGN REPORT THAT SHALL BE SUBMITTED TO THE LOCAL ENERGY CODE OFFICIAL FOR REVIEW AND APPROVAL.

3. THE MECHANICAL SYSTEMS SHALL BE DESIGNED TO OPERATE AT AN OUTDOOR DESIGN TEMPERATURE OF 95°F.

4. THE MECHANICAL SYSTEMS SHALL BE DESIGNED TO OPERATE AT AN INDOOR DESIGN TEMPERATURE OF 75°F.

5. THE MECHANICAL SYSTEMS SHALL BE DESIGNED TO OPERATE AT AN INDOOR DESIGN HUMIDITY RATIO OF 0.015.

6. THE MECHANICAL SYSTEMS SHALL BE DESIGNED TO OPERATE AT AN INDOOR DESIGN WIND SPEED OF 10 MPH.

7. THE MECHANICAL SYSTEMS SHALL BE DESIGNED TO OPERATE AT AN INDOOR DESIGN SOLAR RADIATION OF 1.0 BTU/H SQ FT HR.

8. THE MECHANICAL SYSTEMS SHALL BE DESIGNED TO OPERATE AT AN INDOOR DESIGN HEAVY CLOUD SOLAR RADIATION OF 0.1 BTU/H SQ FT HR.

9. THE MECHANICAL SYSTEMS SHALL BE DESIGNED TO OPERATE AT AN INDOOR DESIGN WIND DIRECTION OF 0°.

10. THE MECHANICAL SYSTEMS SHALL BE DESIGNED TO OPERATE AT AN INDOOR DESIGN WIND SPEED DIRECTION OF 0°.

MECHANICAL SYMBOL LEGEND

1. ROOF MTD. EXHAUST FAN

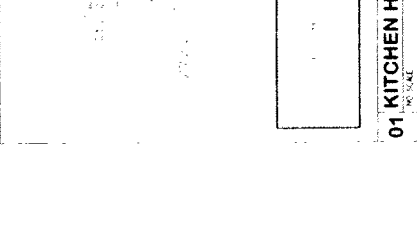
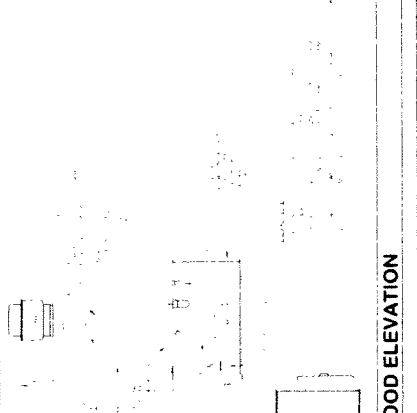
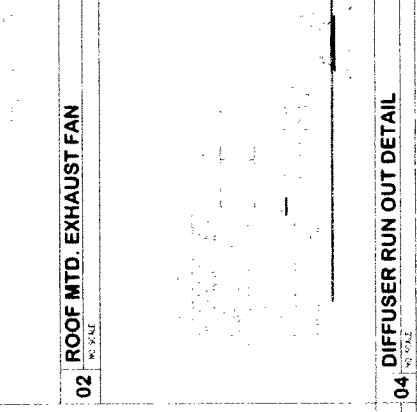
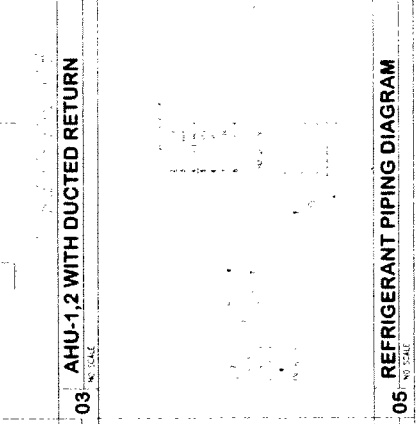
2. AHU-1,2 WITH DUCTED RETURN

3. DIFFUSER RUN OUT DETAIL

4. KITCHEN HOOD ELEVATION

5. FAN SCHEDULE

6. KITCHEN HOOD SCHEDULE



01 KITCHEN HOOD ELEVATION

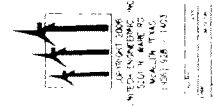
1/8" SCALE

AT & T COMMUNICATIONS
 1200 N. W. 48th St.
 WAKELIN, TEXAS
 76788-4451
 TEL: 817-424-1111
 FAX: 817-424-1112
 WWW: [Website]

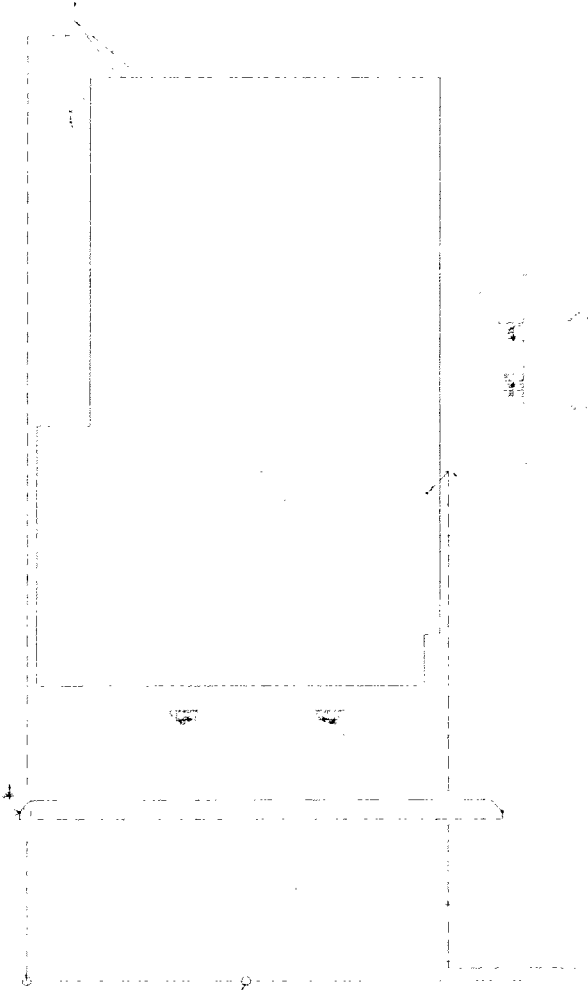
MEETING HALL / PAVILION
HIDALGO COUNTY PRECINCT 3
HIDALGO COUNTY, TEXAS

DATE: 08/10/09
PROJECT: MEETING HALL / PAVILION
DRAWN BY: [illegible]
CHECKED BY: [illegible]
APPROVED BY: [illegible]

PROJECT: MEETING HALL / PAVILION
HIDALGO COUNTY PRECINCT 3
HIDALGO COUNTY, TEXAS
DATE: 08/10/09
DRAWN BY: [illegible]
CHECKED BY: [illegible]
APPROVED BY: [illegible]



ES1



SITE PLAN ELECTRICAL

REVISIONS



JETSON ELECTRICAL, INC.

MEETING HALL / PAVILION
 HIDALGO COUNTY PRECINCT 3
 HIDALGO COUNTY, TEXAS

MEETING HALL / PAVILION
 HIDALGO COUNTY PRECINCT 3
 HIDALGO COUNTY, TEXAS

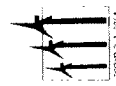
MEETING HALL / PAVILION
 HIDALGO COUNTY PRECINCT 3
 HIDALGO COUNTY, TEXAS



ARCHITECT
 12345 ARCHITECTS
 12345 ARCHITECTS
 12345 ARCHITECTS

E1

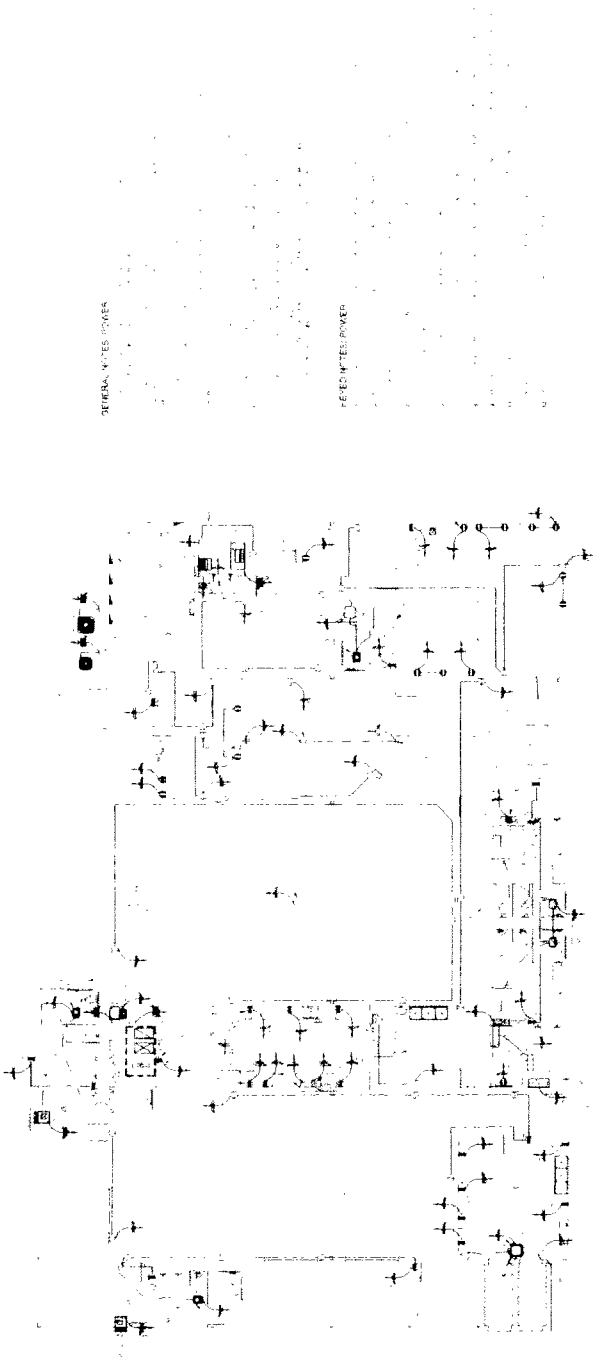




COMPANY: [unreadable]
 520 N. W. 10th St.
 MIAMI, FL 33136
 (305) 575-1425

MEETING HALL / PAVILION
 HIDALGO COUNTY PRECINCT 3
 HIDALGO COUNTY, TEXAS

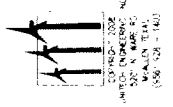
PROJECT NO. 03-27
 DATE: 08/08
 DRAWING NO. 03-27-01
 PROJECT: PRECINCT 3 PAVILION
 PROJECT LOCATION: 10000 HWY 171, WYOMING, TEXAS
 PROJECT OWNER: HIDALGO COUNTY, TEXAS
 PROJECT ARCHITECT: [unreadable]
 PROJECT ELECTRICAL ENGINEER: [unreadable]



DEFERRED NOTES POWER

PENDING NOTES POWER

| | |
|------------------|--|
| PROJECT | 01-21 |
| DATE | 08-02-04 |
| DESIGNER | ALCONER GARCIA ASSOCIATES |
| PROJECT LOCATION | 13111 JENSEN RD MCKINNEY, TEXAS 75069 |



ALCONER GARCIA ASSOCIATES
 13111 JENSEN RD
 MCKINNEY, TEXAS 75069
 (972) 381-1100

MEETING HALL / PAVILION HIDALGO COUNTY PRECINCT 3 HIDALGO COUNTY, TEXAS

ALCONER GARCIA ASSOCIATES
 DESIGN CONSULTING
 13111 JENSEN RD
 MCKINNEY, TEXAS 75069
 TEL: 972-381-1100 FAX: 972-381-1100

1. GENERAL NOTES
 2. ELECTRICAL SYMBOLS
 3. ELECTRICAL SCHEDULES
 4. ELECTRICAL LEGEND
 5. ELECTRICAL PANEL SCHEDULES
 6. ELECTRICAL PANEL SCHEDULES
 7. ELECTRICAL PANEL SCHEDULES
 8. ELECTRICAL PANEL SCHEDULES
 9. ELECTRICAL PANEL SCHEDULES
 10. ELECTRICAL PANEL SCHEDULES

GENERAL NOTES: ELECTRICAL SYSTEMS

GENERAL NOTES: MECHANICAL SYSTEMS



ELECTRICAL LEGEND

LIGHTING:

SYMBOL DESCRIPTION

| | |
|----------|---------------|
| (Symbol) | (Description) |
| (Symbol) | (Description) |
| (Symbol) | (Description) |

SPECIAL SYSTEMS:

SYMBOL DESCRIPTION

| | |
|----------|---------------|
| (Symbol) | (Description) |
| (Symbol) | (Description) |
| (Symbol) | (Description) |

SWITCHES:

SYMBOL DESCRIPTION

| | |
|----------|---------------|
| (Symbol) | (Description) |
| (Symbol) | (Description) |
| (Symbol) | (Description) |

OUTLETS:

SYMBOL DESCRIPTION

| | |
|----------|---------------|
| (Symbol) | (Description) |
| (Symbol) | (Description) |
| (Symbol) | (Description) |

FLOOR OUTLETS:

SYMBOL DESCRIPTION

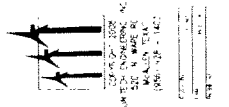
| | |
|----------|---------------|
| (Symbol) | (Description) |
| (Symbol) | (Description) |

MULTI-PHASE EQUIPMENT SCHEDULE

| UNIT | TYPE | DESCRIPTION | PHASES |
|------|------|-------------|--------|
| | | | |
| | | | |
| | | | |
| | | | |

ALCOBER GAMMA ASSOCIATES
DESIGN CONSULTING
10000 WEST LOOP SOUTH
SUITE 100
HOUSTON, TEXAS 77042
PHONE: 281.486.8800
FAX: 281.486.8801
WWW.AGAMMA.COM

MEETING HALL / PAVILION
HIDALGO COUNTY PRECINCT 3
HIDALGO COUNTY, TEXAS

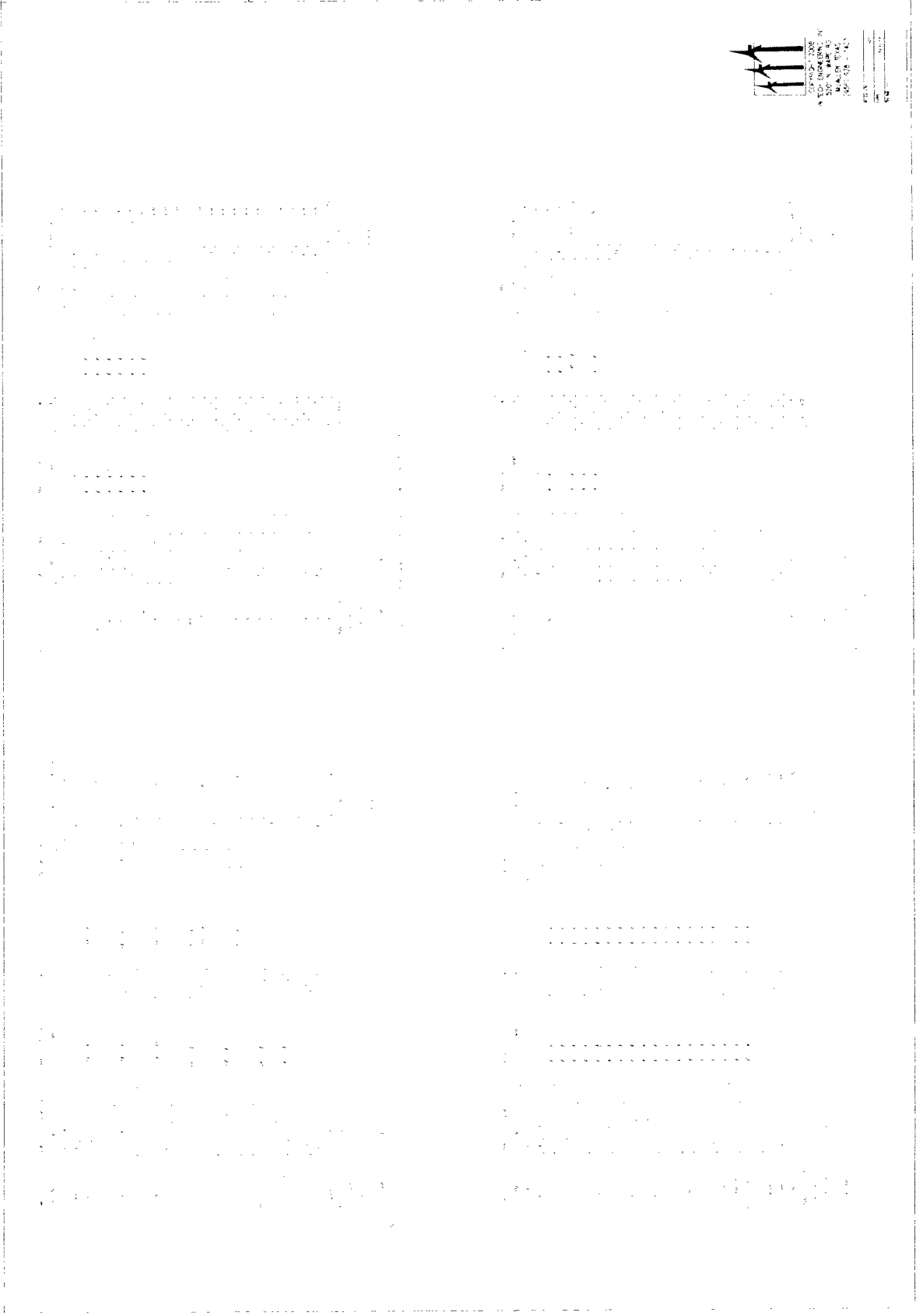


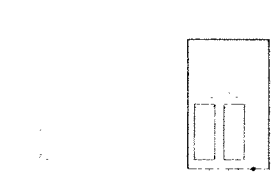
PROJECT: 01111
SHEET: 01111
DATE: 01/11/11
SCALE: 1/8" = 1'-0"

DESIGNED BY: [Name]
CHECKED BY: [Name]
DATE: 01/11/11

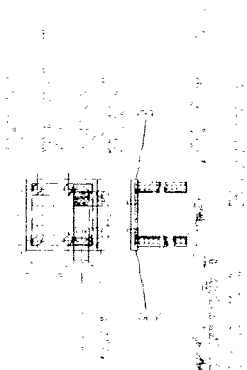
MEETING HALL / PAVILION
HIDALGO COUNTY PRECINCT 3
HIDALGO COUNTY, TEXAS

ALCOER PARTIA ASSOCIATE
DESIGN CONSULTING
1000 N. W. 10th St.
Fort Lauderdale, FL 33304
TEL: 954.574.1100 FAX: 954.574.1101

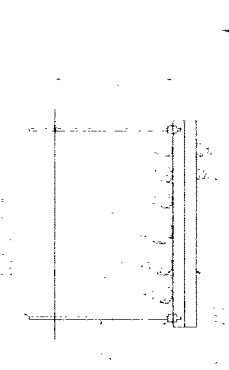




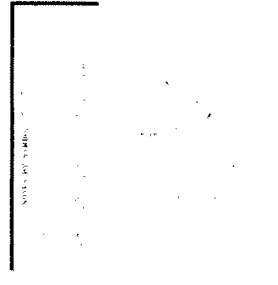
10 TYPICAL WIRING SCHEMATIC
 EMERGENCY LIGHTING



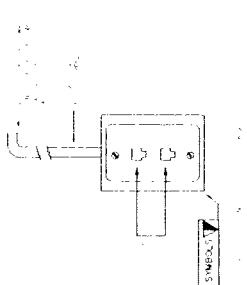
11 TRANSFORMER PAD



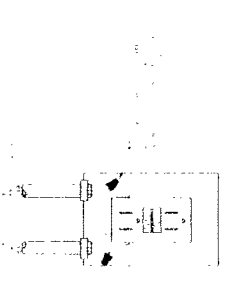
12 SUPPORT DETAIL FOR MULTIPLE
 CONDUIT HORIZONTAL RUNS



07 TYPICAL LAY-IN FIXTURE SUPPORT



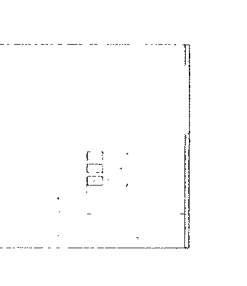
08 TELEPHONE/DATA OUTLET DETAIL



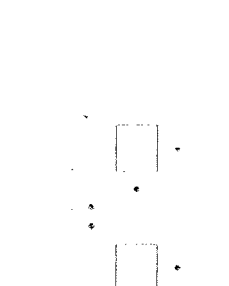
09 GFI RECEPTACLE WIRING DIAGRAM



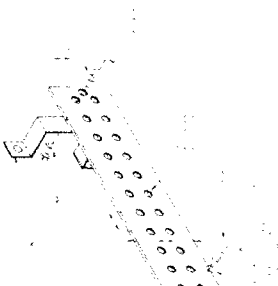
04 DETAIL BACK TO BACK OUTLETS



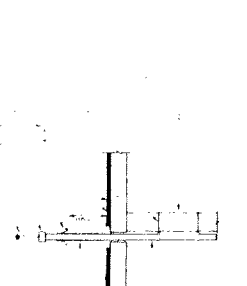
05 SWITCH PLATE LOCATION DETAIL



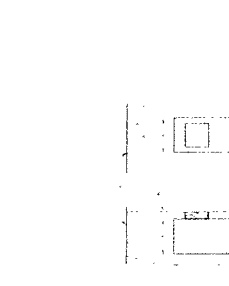
06 DETAIL EXTERIOR LIGHTING



01 WALL MOUNTED SINGLE-POINT
 GROUND BAR DETAIL



02 PHOTO ELECTRIC CELL MAST
 MOUNTING DETAIL



03 TYPICAL PANELBOARD REQUIRED CLEARANCE

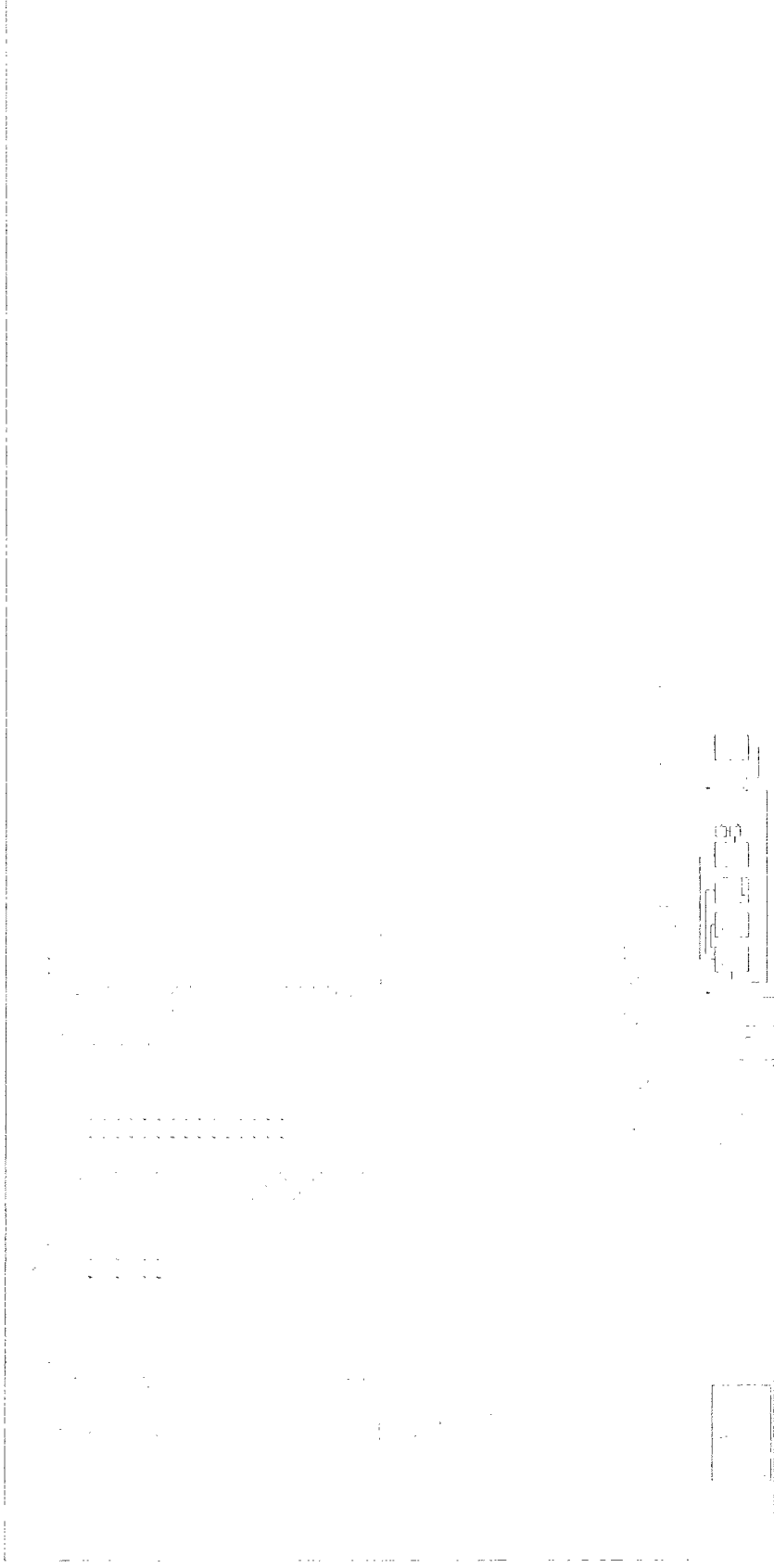
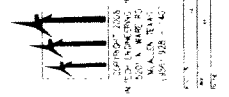
SYMBOLS FOR MULTIPLE
 CONDUIT HORIZONTAL RUNS

| | |
|-------------|--------------|
| DATE | 11-11-11 |
| SCALE | 1/8" = 1'-0" |
| DRAWN BY | J. GARCIA |
| CHECKED BY | A. GARCIA |
| PROJECT NO. | 11-0001 |
| SHEET NO. | 1 OF 1 |

MEETING HALL / PAVILION
 HIDALGO COUNTY PRECINCT 3
 HIDALGO COUNTY, TEXAS

ALDORE GARCIA ARCHITECTS
 500 W. WYOMING ST.
 WAXAHACH, TEXAS 75165
 TEL: 940.939.1111 FAX: 940.939.1112

CONTRACT NO. 11-0001
 SHEET NO. 1 OF 1
 PROJECT NO. 11-0001
 DATE 11-11-11
 DRAWN BY J. GARCIA
 CHECKED BY A. GARCIA

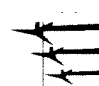


SCALE NOW

ALGERIA MARGA ASSOCIATES
DESIGN CONSULTING
10001 JAMES ST.
SUITE 100
HOUSTON, TEXAS 77036
TEL: 281.486.1100
WWW.AMARGA.COM

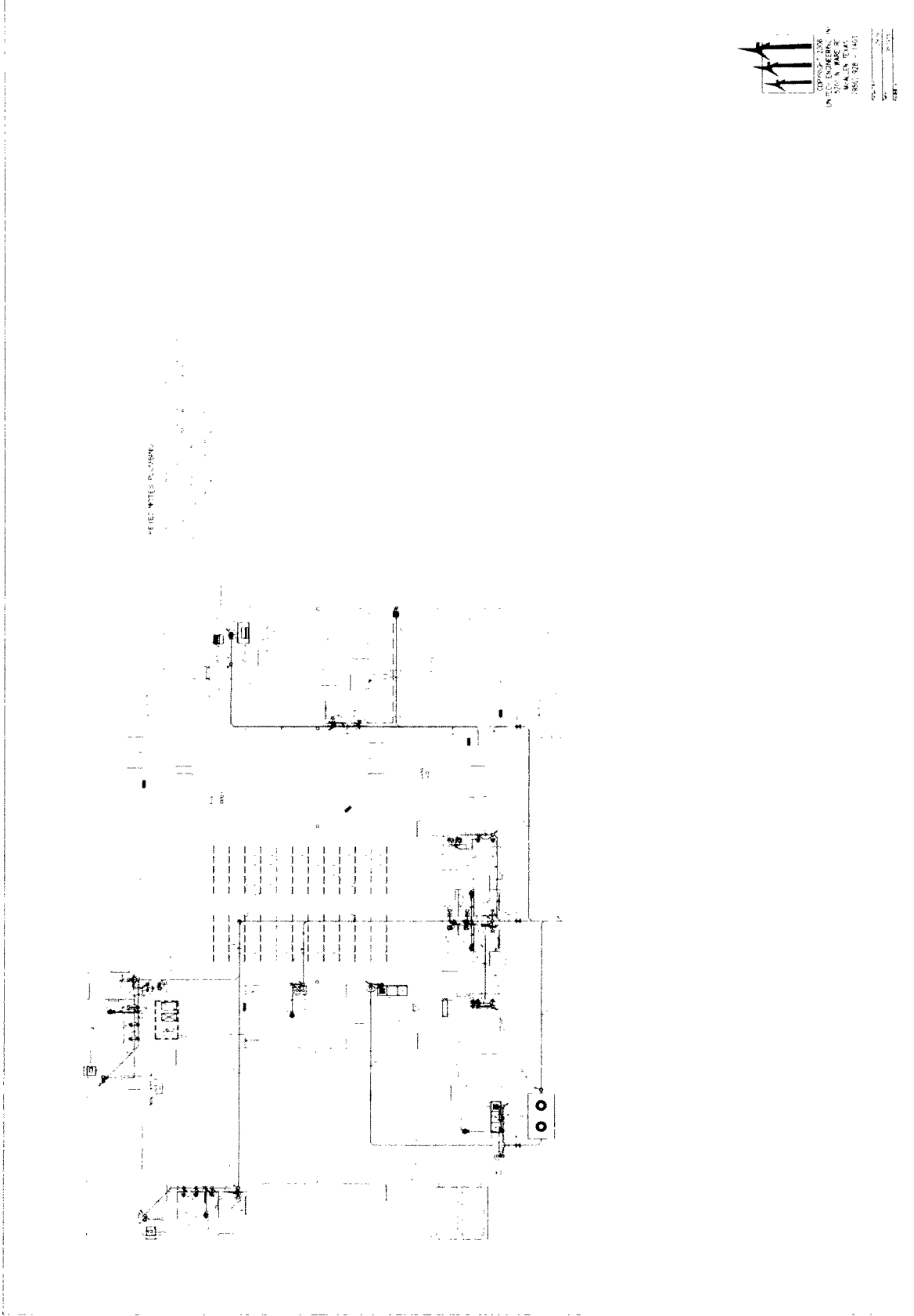
PROJECT NO. 10001
DATE: 08/14/13
DRAWN BY: JMM
CHECKED BY: JMM
SCALE: AS SHOWN
SHEET NO. 1 OF 1

MEETING HALL / PAVILION HIDALGO COUNTY PRECINCT 3 HIDALGO COUNTY, TEXAS



ALGERIA MARGA ASSOCIATES
REGISTERED PROFESSIONAL ENGINEERS
10001 JAMES ST., SUITE 100
HOUSTON, TEXAS 77036
TEL: 281.486.1100
WWW.AMARGA.COM

P1



DATE: 11/12/11
SCALE: 1/8" = 1'-0"
PROJECT: MEETING HALL / PAVILION
SHEET: 01

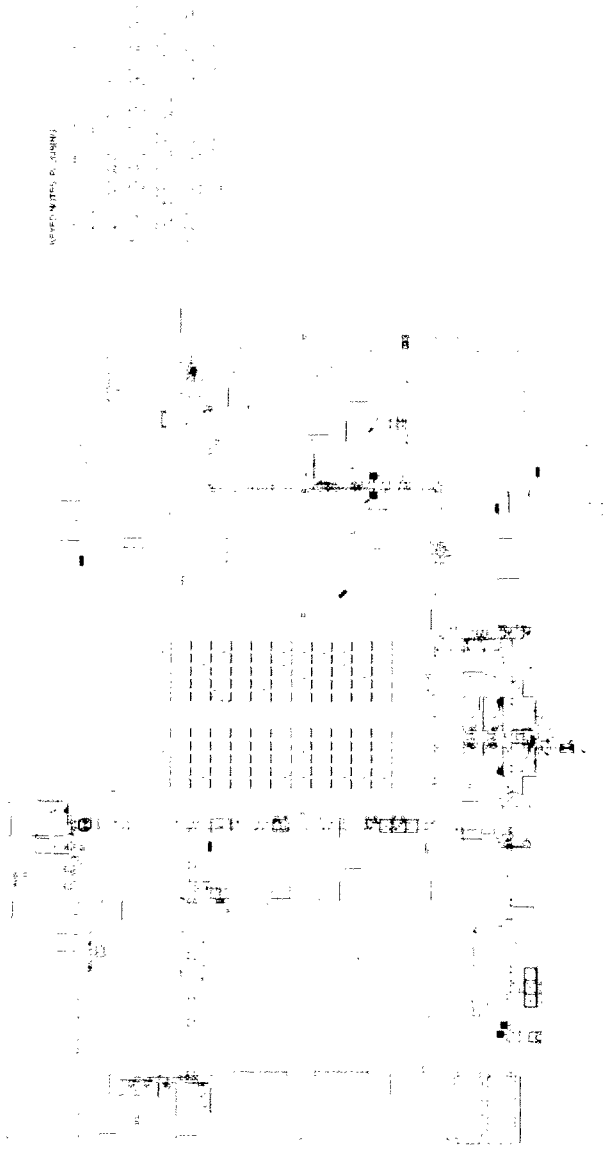
MEETING HALL / PAVILION
HIDALGO COUNTY PRECINCT 3
HIDALGO COUNTY, TEXAS

ALONSO GARCIA ASSOCIATES
ARCHITECTS
1000 WEST 10TH STREET
DALLAS, TEXAS 75201
PHONE: (214) 760-1000
WWW.AGASOCIATES.COM



AEC ENGINEERS, INC.
2000 WEST 10TH STREET
DALLAS, TEXAS 75201
PHONE: (214) 760-1000

DATE: 11/12/11
SCALE: 1/8" = 1'-0"
PROJECT: MEETING HALL / PAVILION
SHEET: 01



REVISED BY: B. GUNNY

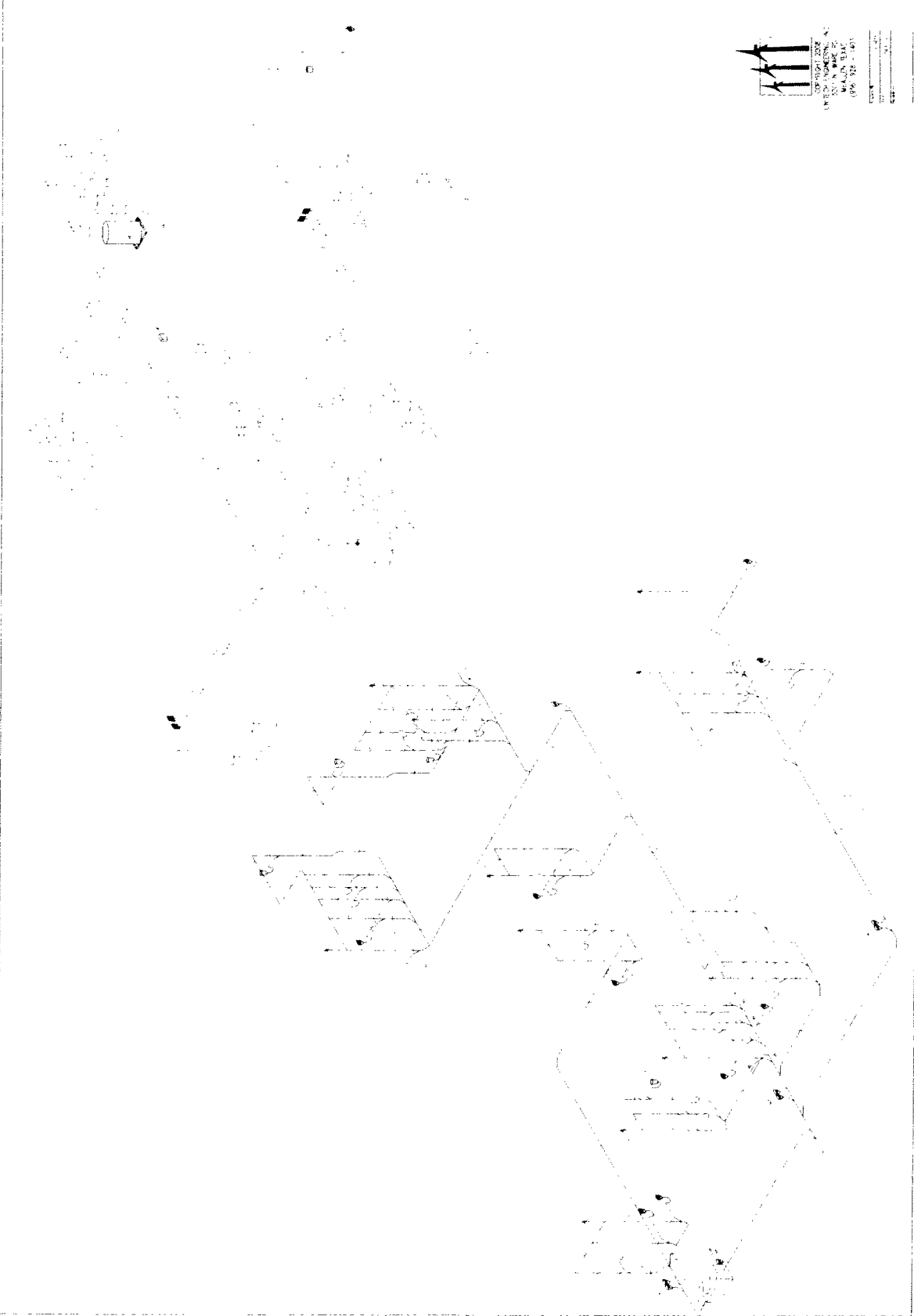
ALDORE GARCIA ASSOCIATES
DESIGN CONSULTING
11111 LINDEN AVE
MAYFIELD HEIGHTS, OHIO 44130
TEL: 216-885-2200
WWW.AGASOCIATES.COM

PROJECT NO. 08-01
SHEET NO. 01 OF 01
DATE: 08/10/08

MEETING HALL / PAVILION
HIDALGO COUNTY PRECINCT 3
HIDALGO COUNTY, TEXAS

PROJECT NO. 08-01
SHEET NO. 01 OF 01
DATE: 08/10/08

P3



ALDORE GARCIA ASSOCIATES
DESIGN CONSULTING
11111 LINDEN AVE
MAYFIELD HEIGHTS, OHIO 44130
TEL: 216-885-2200
WWW.AGASOCIATES.COM

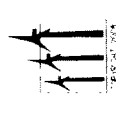
ALDORE & ASSOCIATES
 1315 N. GARDNER
 DALLAS, TEXAS 75242
 (214) 742-4500

PROJECT NO. 100-010
 SHEET NO. P4
 DATE: 08/14/01

MEETING HALL / PAVILION
 HIDALGO COUNTY PRECINCT 3
 HIDALGO COUNTY, TEXAS

| | |
|---------|------|
| PROJECT | DATE |
| NO. | NO. |
| DATE | NO. |
| DATE | NO. |
| DATE | NO. |

P4



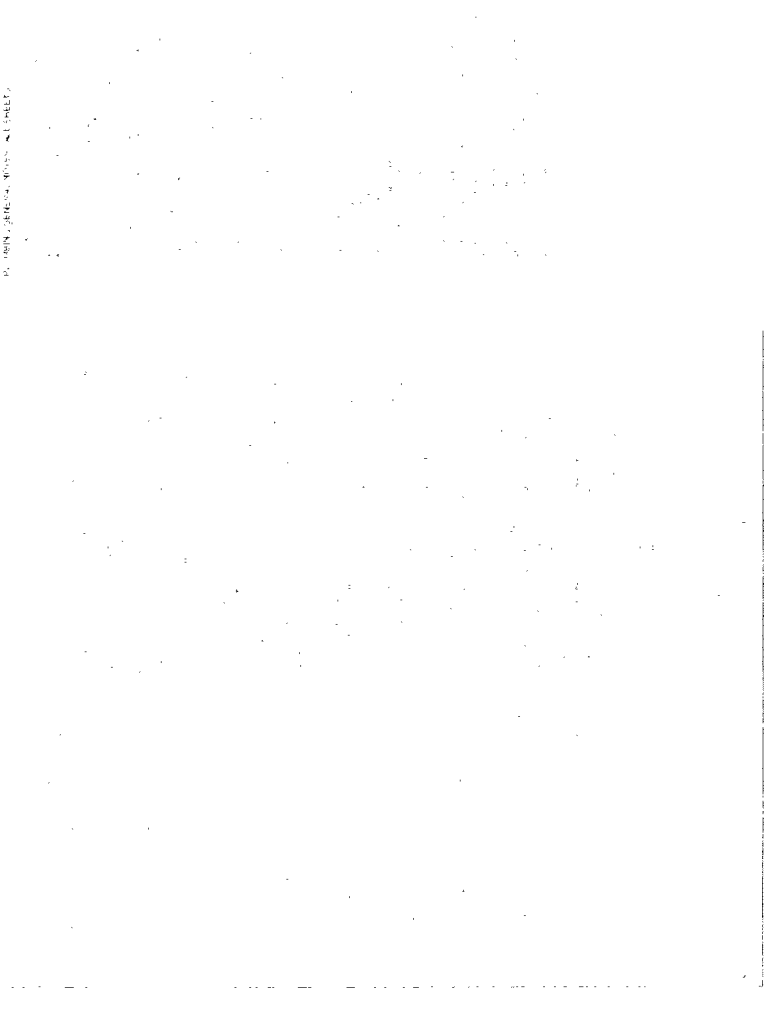
ADORE & ASSOCIATES
 1315 N. GARDNER
 DALLAS, TEXAS 75242
 (214) 742-4500

| | |
|---------|------|
| PROJECT | DATE |
| NO. | NO. |
| DATE | NO. |
| DATE | NO. |
| DATE | NO. |

PLUMBING SYMBOL LEGEND

| | |
|--|------------------------|
| | 1/2" COLD WATER SUPPLY |
| | 3/4" COLD WATER SUPPLY |
| | 1" COLD WATER SUPPLY |
| | 1/2" HOT WATER SUPPLY |
| | 3/4" HOT WATER SUPPLY |
| | 1" HOT WATER SUPPLY |
| | 1/2" HOT WATER RETURN |
| | 3/4" HOT WATER RETURN |
| | 1" HOT WATER RETURN |
| | 1/2" COLD WATER RETURN |
| | 3/4" COLD WATER RETURN |
| | 1" COLD WATER RETURN |
| | 1/2" HOT WATER RETURN |
| | 3/4" HOT WATER RETURN |
| | 1" HOT WATER RETURN |
| | 1/2" HOT WATER SUPPLY |
| | 3/4" HOT WATER SUPPLY |
| | 1" HOT WATER SUPPLY |
| | 1/2" HOT WATER RETURN |
| | 3/4" HOT WATER RETURN |
| | 1" HOT WATER RETURN |
| | 1/2" COLD WATER RETURN |
| | 3/4" COLD WATER RETURN |
| | 1" COLD WATER RETURN |

PLUMBING SYMBOL LEGEND



ALLEN BR. GARCIA ASSOCIATES
 ARCHITECTS
 13011 MARSH AVE.
 BECKLEY, TEXAS 75007 / FAX 936-838-2900
 WWW.ABGA.COM

MEETING HALL / PAVILION
 HIDALGO COUNTY, TEXAS

MEETING HALL / PAVILION
 HIDALGO COUNTY PRECINCT 3
 HIDALGO COUNTY, TEXAS

PROJECT NO. 05-218
 DATE 08/11/08
 DRAWING NO. 05-218-01
 SHEET NO. 05-218-01-01
 TOTAL SHEETS 05-218-01-01

P5

