

**Rudy Villarreal**  
Mayor

**Diana Martinez**  
Mayor Pro-Tem

**Jesus "Jesse" Vela, Jr.**  
Commissioner

**Victor Perez**  
Commissioner

**Roel Landa, Jr.**  
Commissioner

**Luciano Ozuna, Jr.**  
City Manager



December 12, 2008

Mrs. Lupita V. Garcia, C.D. Coordinator  
Urban County Program  
1916 Tesoro Blvd.  
Pharr Texas 78577

**Re: PFI-Fire Station Project**

Dear Lupita:

At a Regular Meeting of December 2, 2008, the Board of Commissioners voted to approve Change Order No.2 in the amount of \$79,873.10. This will increase an existing contract with Williamson Construction from \$814,546.00 to a new total of \$894,419.10. The Change Order is for the purchase/installation of a 150kw emergency power generator for the new fire station and will be paid with non-CDBG funds.

I ask that this be placed on the next County Commissioners Court agenda for appropriate action.

If you need additional information or have any questions, please call me at (956) 787-0006 ext.106.

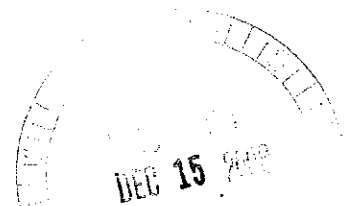
Sincerely,

Jaime S. Sandoval  
Community Planning & Development Director

Enclosures

CC: Luciano Ozuna, Jr., City Manager  
Enrique Guzman, Finance Director  
File

420 N. Tower Road . Alamo Texas 78516 (956) 787-0006 787-6807 fax  
"This institution is an equal opportunity provider, and employer."



**HIDALGO COUNTY  
URBAN COUNTY PROGRAM**

**UCP CONTRACT CHANGE ORDER REQUEST**

CITY/PCT. <u>City of Alamo</u> <u>423 N. Tower Rd.</u> Alamo, TX 78516 (Address)	DATE: December 3, 2008  CHANGE ORDER NO. 2
CONTRACTOR/FIRM (Name & Address) <u>Joe Williamson Construction Co., Inc.</u> <u>P.O. Box 4352</u> <u>McAllen, TX 78502</u>  Phone #: 781-9781	PROJECT/NAME/ACCT. NO. Fire Station 5006-50-0315-5000-0500GVG
You are hereby requested to comply with the following changes from the contract plans and specifications:  Provide / install 150 KW emergency generator as per attached plans and Contractor's Cost Proposal.	

X

Final Quantitative Adjustments

Unit Prices

Quantitative Addition

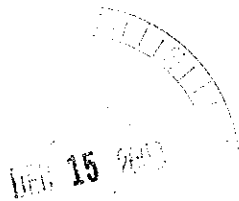

Quantitative Deletion

Time Extension

Other

REASON: As requested by Owner

Contract price prior to change order .....	\$ <u>814,546.00</u>
Net Increase of this Change Order .....	\$ <u>79,873.10</u>
Contract Price with Change Order .....	\$ <u>894,419.10</u>
Increase/Decrease in time <u> - 0 - </u> days.	



*CW*



**PROPOSED 150 KW EMERGENCY  
DIESEL GENERATOR  
FOR THE  
ALAMO FIRE STATION**

Submitted by:

Joe Williamson Construction Co., Inc.  
General Contractor

December, 2008

Contents:

Contractor's Cost Proposal  
Generator Data sheets  
Engineering Drawings  
Architectural Drawings

# Change Order Request

Detailed, Grouped by Each Number

2279-Alamo Fire Station Project # 2279 Joe Williamson Construction  
 415 N. Tower Rd Tel: (956) 781-9781 Fax: (956) 787-2113  
 Alamo, Texas 78516

**Change Order Request: 008-2279-Revised** Date: 12/1/2008

**To:** Ed Alcocer **From:** Arika Stevens  
 Alcocer Garcia Associates Design Consulting Joe Williamson Construction  
 1335 E. Jasmine Ave P.O. Box 4352  
 McAllen, Texas 78501 McAllen, TX 78502

Description	Category	Status
Generator		Pending

Reference	Required By	Days Req	Amt Req
	12/8/2008	15	79,873.10

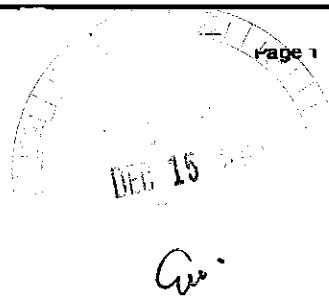
**Notes**

PCO No	Date	Reference	Amt Prop	Days Req	Category	Reason
009-R	12/1/2008		79,873.10	0	Change Order	Direct Costs
		Generator Change Order A. Concrete work \$3,271.00 1. Rebar \$698 2. Concrete \$750 3. Labor \$1,450 4. Steel plate \$373  B. Interior Finishes \$75.00 1. Ceilings \$600 2. Credit hang door & Hdw (\$50) 3. Credit HM, Wd Dr & Hdw (\$596) 4. Light fixture \$50 5. VCT \$71  C. Electrical \$72,954.00 1. Engineering \$3,500 2. Relocate conduit \$1,700 3. Materials \$2,709 4. Equipment \$920 5. Labor \$7,500 6. Generator \$56,625.00  D. Contractor's Fee \$8,077.10				

Approved By:

Signature \_\_\_\_\_

Name \_\_\_\_\_ Date \_\_\_\_\_



# SD135 SD150

## Liquid Cooled Diesel Engine Generator Sets

### Standby Power Rating

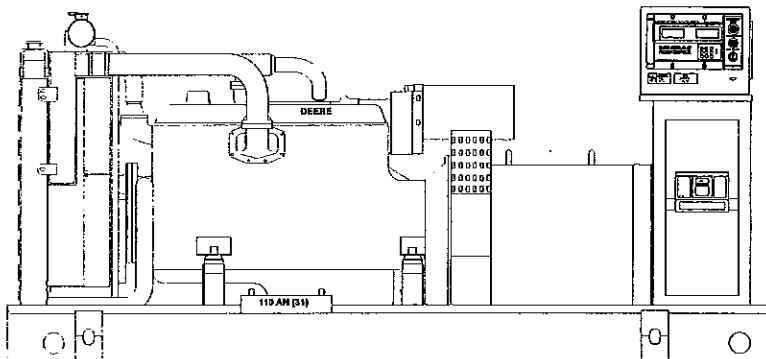
135KW 60Hz

150KW 60 Hz

### Prime Power Rating

120KW 60 Hz

135KW 60 Hz



Power Matched

### GENERAC 6.8 DTA ENGINE

Turbo-Charged, Aftercooled  
EPA Tier III Compliant

## FEATURES

- **INNOVATIVE DESIGN & PROTOTYPE TESTING** are key components of GENERAC'S success in "IMPROVING POWER BY DESIGN." But it doesn't stop there. Total commitment to component testing, reliability testing, environmental testing, destruction and life testing, plus testing to applicable CSA, NEMA, EGSA, and other standards, allows you to choose GENERAC POWER SYSTEMS with the confidence that these systems will provide superior performance.
- **TEST CRITERIA:**
  - ✓ PROTOTYPE TESTED
  - ✓ SYSTEM TORSIONAL TESTED
  - ✓ ELECTRO-MAGNETIC INTERFERENCE
  - ✓ NEMA MG1 EVALUATION
  - ✓ MOTOR STARTING ABILITY
  - ✓ SHORT CIRCUIT TESTING
  - ✓ UL 2200 COMPLIANCE AVAILABLE
- **MICROPROCESSOR CONTROLLED VOLTAGE AND FREQUENCY REGULATION.** Digital microprocessor control of engine and generator functions and protective systems integrated

into a single controller for unparalleled performance and reliability. LCD display of all engine and generator functions and remote monitoring via GenLink® software.

- **SINGLE SOURCE SERVICE RESPONSE** from Generac's dealer network provides parts and service know-how for the entire unit, from the engine to the smallest electronic component. You are never on your own when you own a GENERAC POWER SYSTEM.
- **ECONOMICAL DIESEL POWER.** Low cost operation due to modern diesel engine technology. Better fuel utilization plus lower cost per gallon provide real savings.
- **LONGER ENGINE LIFE.** Generac heavy-duty diesels provide long and reliable operating life.
- **GENERAC TRANSFER SWITCHES AND ACCESSORIES.** Long life and reliability is synonymous with GENERAC POWER SYSTEMS. One reason for this confidence is that the GENERAC product line includes its own transfer systems, accessories, and controls for total system compatibility.

# GENERAC®

---

## POWER SYSTEMS, INC.

# APPLICATION & ENGINEERING DATA

SD135/SD150

## GENERATOR SPECIFICATIONS

TYPE ..... Four-pole, revolving field  
ROTOR INSULATION..... Class H  
STATOR INSULATION..... Class H  
TOTAL HARMONIC DISTORTION..... <3.0%  
TELEPHONE INFLUENCE FACTOR (TIF)..... <50  
ALTERNATOR ..... Self-ventilated and drip-proof  
BEARINGS (PRE-LUBED & SEALED) ..... 2  
COUPLING..... Flexible Disc  
LOAD CAPACITY (STANDBY) ..... 100%

**NOTE: Emergency loading in compliance with NFPA 99, NFPA 110. Generator rating and performance in accordance with ISO8528-5, BS5514, SAE J1349, ISO3046 and DIN6271 standards.**

### EXCITATION SYSTEM

PERMANENT MAGNET PILOT EXCITER..... Eighteen-pole exciter ✓  
Magnetically coupled DC current ✓  
Mounted outboard of main bearing ✓  
REGULATION..... H100 Controller Digital ✓  
3 Phase Sensing, ± 1% regulation ✓

## GENERATOR FEATURES

- Revolving field heavy duty generator
- Directly connected to the engine
- Operating temperature rise 120 °C above a 40 °C ambient
- Insulation is Class H rated at 150 °C rise
- All prototype models have passed three phase short circuit testing

## CONTROL PANEL FEATURES

- TWO FOUR LINE LCD DISPLAYS READ:
  - Voltage (all phases)
  - Power factor
  - kVAR
  - Engine speed
  - Run hours
  - Fault history
  - Coolant temperature
  - Low oil pressure shutdown
  - Overvoltage
  - Low coolant level
  - Not in auto position (flashing light)
  - ATS selection
  - Current (all phases)
  - kW
  - Transfer switch status
  - Low fuel pressure
  - Service reminders
  - Oil pressure
  - Time and date
  - High coolant temperature shutdown
  - Overspeed
  - Low coolant level
  - Exercise speed
- INTERNAL FUNCTIONS:
  - IT function for alternator protection from line to neutral and line to line short circuits
  - Emergency stop
  - Programmable auto crank function
  - 2 wire start for any transfer switch
  - Communicates with the Generac HTS transfer switch
  - Built-in 7 day exerciser
  - Adjustable engine speed at exerciser
  - RS232 port for GenLink<sup>®</sup> control
  - RS485 port remote communication
  - Canbus addressable
  - Governor controller and voltage regulator are built into the master control board
  - Temperature range -40 °C to 70 °C

## ENGINE SPECIFICATIONS

MAKE ..... DEERE  
MODEL..... See Exhaust Emission Sheet  
ENGINE FAMILY..... First digit is Cert. Yr. (i.e. 7, 8, 9) \_JDXL06.8104  
CYLINDERS ..... 6 in-line  
DISPLACEMENT..... 6.8 Liters (415 cu. in.)  
BORE ..... 106 mm (4.19 in.)  
STROKE..... 127 mm (5.0 in.)  
COMPRESSION RATIO ..... 17.0:1  
INTAKE AIR..... Turbocharged, Aftercooled  
NUMBER OF MAIN BEARINGS ..... 7  
CONNECTING RODS..... 6-Carbon Steel  
CYLINDER HEAD ..... Cast Iron with Overhead Valve  
PISTONS..... 6-Heat Resistant Aluminum Alloy  
CRANKSHAFT ..... Case Hardened, Die Forged, Carbon Steel

### VALVE TRAIN

LIFTER TYPE..... Solid  
INTAKE VALVE MATERIAL..... Special Heat Resistant Steel  
EXHAUST VALVE MATERIAL ..... Special Heat Resistant Steel  
HARDENED VALVE SEATS ..... Replaceable  
VALVES PER CYLINDER..... 2

### ENGINE GOVERNOR

ELECTRONIC ..... Standard  
FREQUENCY REGULATION, NO-LOAD TO FULL LOAD... Isochronous  
STEADY STATE REGULATION..... ±0.25%

### LUBRICATION SYSTEM

TYPE OF OIL PUMP ..... Forced Feed Lubrication w/ Oil Pump  
OIL FILTER..... Full Flow, Cartridge  
CRANKCASE CAPACITY..... 22.7 Liters (6.0 U.S. gallons)

### COOLING SYSTEM

TYPE OF SYSTEM ..... Pressurized, closed recovery  
WATER PUMP ..... Pre-lubed, Self-Sealing  
TYPE OF FAN ..... Pusher  
NUMBER OF FAN BLADES..... 7  
DIAMETER OF FAN ..... 650 mm (26.0 in.)  
COOLANT HEATER..... 120V, 1800 W

### FUEL SYSTEM

FUEL ..... #2D Fuel (Min Cetane #40)  
(Fuel should conform to ASTM Spec.)  
FUEL FILTER ..... 10 Micron  
FUEL INJECTION PUMP ..... ZEXEL  
FUEL PUMP ..... Mechanical  
INJECTORS ..... Multi-hole, nozzle type  
ENGINE TYPE..... Direct injection  
FUEL LINE (Supply) ..... 9.53 mm (0.375 in.)  
FUEL RETURN LINE ..... 9.53 mm (0.375 in.)

### ELECTRICAL SYSTEM

BATTERY CHARGE ALTERNATOR..... 45 Amps at 24 V  
STARTER MOTOR ..... 24 V  
RECOMMENDED BATTERY..... 2-12V, 31  
GROUND POLARITY ..... Negative

Rating definitions - Standby: Applicable for supplying emergency power for the duration of the utility power outage. No overload capability is available for this rating. (All ratings in accordance with BS5514, ISO3046 and DIN6271). Prime (Unlimited Running Time): Applicable for supplying electric power in lieu of commercially purchased power. Prime power is the maximum power available at variable load. A 10% overload capacity is available for 1 hour in 12 hours. (All ratings in accordance with BS5514, ISO3046, ISO8528 and DIN6271).

SD135/SD150

**OPERATING DATA**

	STANDBY				PRIME			
	SD135		SD150		SD135		SD150	
<b>GENERATOR OUTPUT VOLTAGE/KW-60Hz</b>	<b>kW</b>	<b>Rated AMP</b>	<b>kW</b>	<b>Rated AMP</b>	<b>kW</b>	<b>Rated AMP</b>	<b>kW</b>	<b>Rated AMP</b>
120/240V, 1-phase, 1.0 pf	135	563	150	625	120	500	135	563
120/208V, 3-phase, 0.8 pf	135	468	150	520	120	416	135	468
120/240V, 3-phase, 0.8 pf	135	406	150	451	120	361	135	406
277/480V, 3-phase, 0.8 pf	135	203	150	226	120	180	135	203
600V, 3-phase, 0.8 pf	135	162	150	180	120	144	135	162
NOTE: Consult your Generac dealer for additional voltages.								
<b>MOTOR STARTING</b>	<b>208/240V</b>		<b>400/480V</b>		<b>208/240V</b>		<b>400/480V</b>	
Maximum KVA with 35% instantaneous voltage dip	371	464	522	653	371	464	522	653
with standard alternator; 60 Hz	371	464	522	653	371	464	522	653
with optional alternator; 60 Hz	522	653	522	653	522	653	522	653
<b>FUEL</b>	<b>25%</b>		<b>50%</b>		<b>75%</b>		<b>100%</b>	
Fuel consumption—60 Hz	33.75	67.5	101.25	135	37.5	75	112.5	150
Load kW @ %	2.87	5.45	7.95	9.89	3.11	5.89	8.60	10.83
gal./hr.	10.85	20.61	30.11	37.43	11.75	22.30	32.55	40.99
Liters/Hr.	8.68	16.49	24.09	29.94	8.68	16.49	24.09	29.94
<b>COOLING</b>	<b>25%</b>		<b>50%</b>		<b>75%</b>		<b>100%</b>	
Coolant capacity System - lit. (US gal.)	42.4	(11.2)	42.4	(11.2)	42.4	(11.2)	42.4	(11.2)
Engine - lit. (US gal.)	13.0	(3.4)	13.0	(3.4)	13.0	(3.4)	13.0	(3.4)
Radiator - lit. (US gal.)	29.4	(7.8)	29.4	(7.8)	29.4	(7.8)	29.4	(7.8)
Coolant flow/min. 60 Hz - lit. (US gal.)	265	(70)	265	(70)	265	(70)	265	(70)
Heat rejection to coolant BTU/hr.	263,000		293,000		211,200		234,000	
Inlet air 60 Hz - m <sup>3</sup> /min. (cfm)	259	(9,128)	259	(9,128)	259	(9,128)	259	(9,128)
Max. operating air temp onto radiator °C (°F)	60	(140)	60	(140)	60	(140)	60	(140)
*see note								
Max. operating ambient temp °C (°F)	50	(122)	50	(122)	50	(122)	50	(122)
*see note								
Max. external pressure drop on rad in. H <sub>2</sub> O	0.5		0.5		0.5		0.5	
<b>COMBUSTION AIR REQUIREMENTS</b>	<b>12.5</b>		<b>14.5</b>		<b>10.0</b>		<b>11.7</b>	
Flow at rated power 60 Hz - m <sup>3</sup> /min. (cfm)	442.0		512.3		353.6		414.8	
<b>EXHAUST</b>	<b>36.8</b>		<b>42.7</b>		<b>28.6</b>		<b>33.5</b>	
Exhaust flow at rated output 60 Hz - m <sup>3</sup> /min. (cfm)	1301		1508		1009		1184	
Max recommended back pressure Kpa (Hg)	5.1	(1.5)	5.1	(1.5)	5.1	(1.5)	5.1	(1.5)
Exhaust temp at rated output °C (°F)	460	(860)	476	(890)	435	(815)	446	(835)
Exhaust outlet size mm (in)	127	(5.0)	127	(5.0)	127	(5.0)	127	(5.0)
<b>ENGINE</b>	<b>1800</b>		<b>1800</b>		<b>1800</b>		<b>1800</b>	
Rated RPM 60 Hz	1800		1800		1800		1800	
HP (@ rated kW) 60 Hz	208		229		165		183	
Piston speed (mean) 60 Hz - m/sec. (ft./min.)	7.6	(1500)	7.6	(1500)	7.6	(1500)	7.6	(1500)
BMEP 60 Hz - psi	249		221		177		200	
<b>DERATION FACTORS</b>	<b>40</b>		<b>40</b>		<b>40</b>		<b>40</b>	
Temperature	40		40		40		40	
2.4% for every 10°C above - °C	104		104		104		104	
4.1% for every 10°F above - °F								
Allitude	1525		1066		1525		1066	
0.8% for every 100 m above - m	5000		3500		5000		3500	
2.6% for every 1000 ft. above - ft.								

\* Note: Values given are maximum temperatures to which power adjustments can be applied. Consult your Generac Power Systems representative if operating conditions exceed these maximums.

# STANDARD ENGINE & SAFETY FEATURES

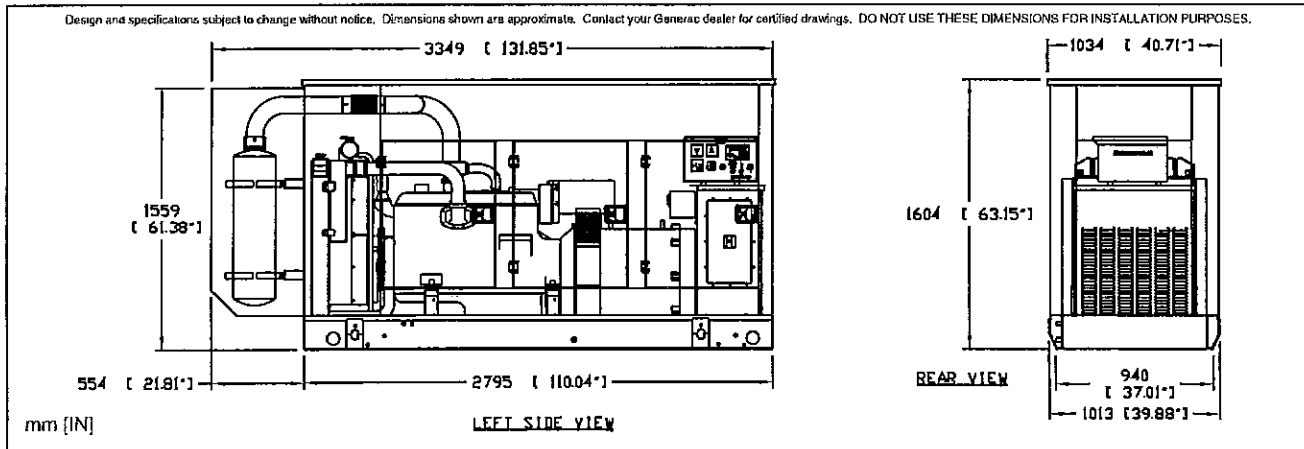
SD135/SD150

- High Coolant Temperature Automatic Shutdown
- Low Coolant Level Automatic Shutdown
- Low Oil Pressure Automatic Shutdown
- Overspeed Automatic Shutdown (Solid-state)
- Crank Limiter (Solid-state)
- Oil Drain Extension
- Radiator Drain Extension
- Factory-Installed Cool Flow Radiator
- Closed Coolant Recovery System
- UV/Ozone Resistant Hoses
- Rubber-Booted Engine Electrical Connections
- Secondary Fuel Filter
- Fuel Lockoff Solenoid
- Stainless Steel Flexible Exhaust Connection
- Battery Charge Alternator
- Battery Cables
- Battery Tray
- Vibration Isolation of Unit to Mounting Base
- 24 Volt, Solenoid-activated Starter Motor
- Air Cleaner
- Fan Guard
- Control Console
- Coolant Heater
- Isochronous Governor
- Radiator Duct Adapter

## OPTIONS

- **OPTIONAL COOLING SYSTEM ACCESSORIES**
  - Coolant Heater 208/240VAC
- **OPTIONAL FUEL ACCESSORIES**
  - Flexible Fuel Lines
  - UL Listed Fuel Tanks
  - Base Tank Fuel Alarms
  - Primary Fuel Filter
- **OPTIONAL EXHAUST ACCESSORIES**
  - Critical Exhaust Silencer (Standard on enclosed gensets)
- **OPTIONAL ELECTRICAL ACCESSORIES**
  - Battery, 12 Volt, 135 A.H., 4D (2 req'd)
  - Battery, 12 Volt, 225 A.H., 8D (2 req'd)
  - 2A Battery Charger
  - 10A Dual Rate Battery Charger
  - Battery Heater
- **OPTIONAL ALTERNATOR ACCESSORIES**
  - Alternator Upsizing
  - Alternator Strip Heater
  - Alternator Tropicalization
  - Voltage Changeover Switch
  - Main Line Circuit Breaker
- **CONTROL CONSOLE OPTIONS**
  - Digital Controller H-100 (Bulletin 0172110SBY)
- **ADDITIONAL OPTIONAL EQUIPMENT**
  - Automatic Transfer Switch
  - 3 Light Remote Annunciator
  - 5 Light Remote Annunciator
  - 20 Light Remote Annunciator
  - Remote Relay Panels
  - Unit Vibration Isolators
  - Oil Make-Up System
  - Oil Heater
  - 5 Year Warranties
  - Export Boxing
  - GenLink® Communications Software
- **OPTIONAL ENCLOSURES**
  - Weather Protective
  - Sound Attenuated
  - Aluminum and Stainless Steel
  - Enclosed Muffler

Distributed by:

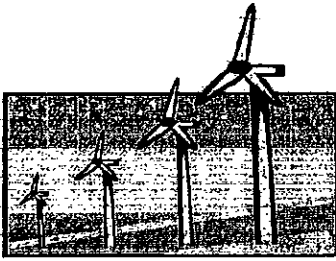


**GENERAC® POWER SYSTEM, INC.** • P.O. BOX 8 • WAUKESHA, WI 53187

262/544-4811 • FAX 262/544-4851

Alamo Fire Station - Change Order

Fax -> Williamson  
cc -> AGADC



# UNITECH ENGINEERING, INC.

713 E. ESPERANZA SUITE B  
McALLEN, TX 78501  
(956) 928-1403 - VOICE  
(956) 928-1426 - FAX

## Revision 3

TO: AGADC

PROJECT #: 07-218

FROM: Robert De La Cruz, P.E.

PROJECT: Alamo Fire Station

SUBJECT: Change order for decreasing generator size

**General: Provide new 150 KW Generator, transfer switch, and other changes illustrated in the following specifications and drawings.**

**General : Change the following:**

1. Replace 1000Amp ATS with 600 Amp ATS
2. Reduce feeder from Generator to Panels
3. Reduce Generator size from 250KW to 150KW and breaker from 900Amps to 600Amps
4. Reduce Generator 24hour fuel tank to 12 hour
5. Reduce panel E from 125Amp to 100Amp

**General: Delete the following:**

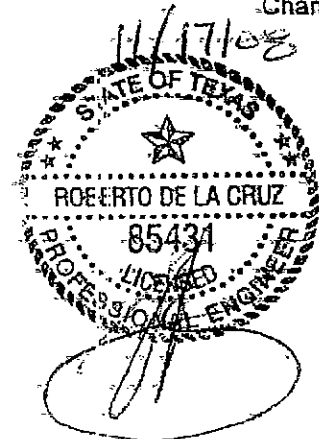
1. Delete panel 'EP' and feeder
2. Delete Sound Attenuated Enclosure for the generator

**Drawings:**

<u>Item No.</u>	<u>Sheet Number</u>	<u>Addition/Change or Deletion</u>
1.	E2R3.1	Deletion
2.	E5R4	Change
3.	E6R3.1	Deletion
4.	E6R3.2	Change
5.	E6R3.3	Change

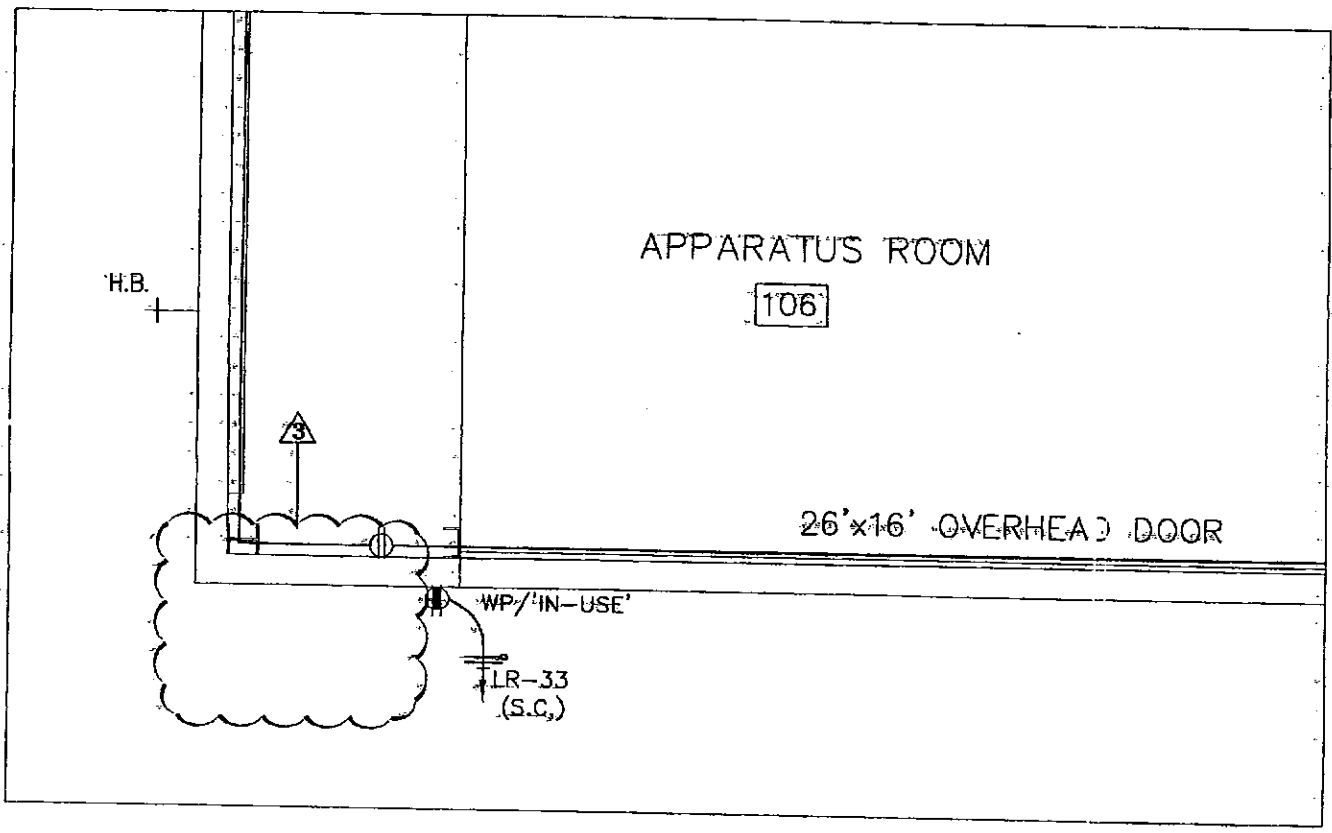
NOTE: Show Credits For Feeder Disconnects & TRANSFORMER FROM ORIGINAL CONTRACT.

Thanks Robert



REVISIONS		
NO.	DATE	SHEET#
1	8/29/08	E2
2	9/24/08	E2
3	11/10/08	E2

DELETION OF PANEL EP



DELETED PANEL EP.



# PARTIAL FLOOR PLAN

SCALE: 1/4" = 1'-0"



# ALAMO FIRE STATION

## CITY OF ALAMO, TEXAS

**AGADC**  
Alcocer Garcia Associates  
Design Consulting  
1333 E. JASMINE AVE.  
MCKENNA, TEXAS 78501  
TEL. 958.616.2007 FAX 958.616.2008  
WE-MAIL: AGADC@AGADC.COM

PAGE  
**E2R3.1**

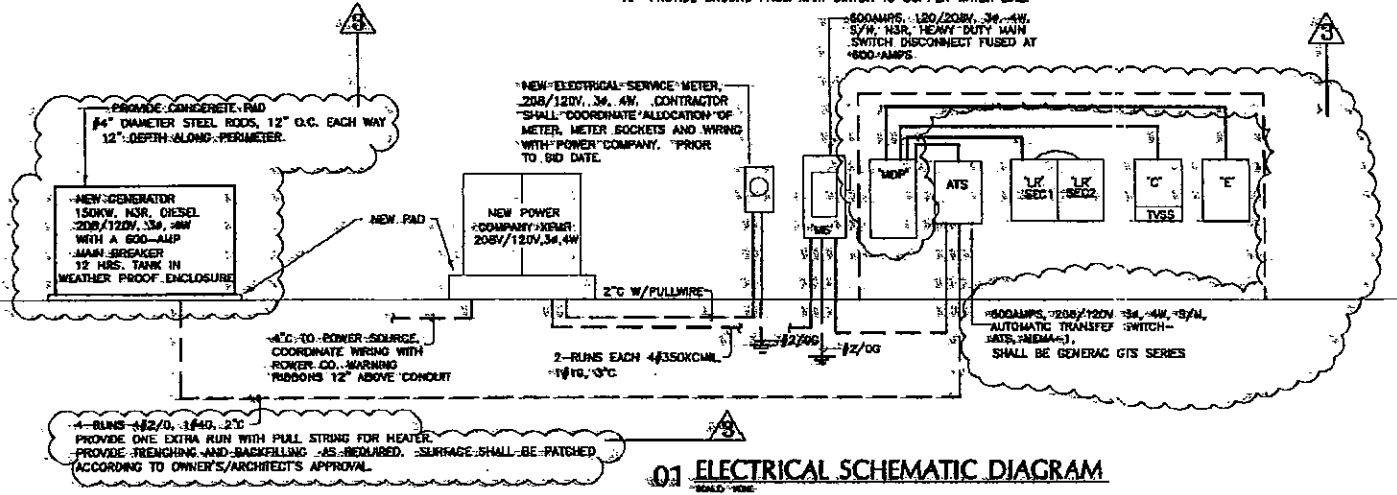


REVISIONS		
NO.	DATE	SHEET#
1	8/29/08	E6
2	9/24/08	E6
3	11/10/08	E6

RISER MODIFICATION

**GENERAL NOTE:**

1. PROVIDE GROUND FROM MAIN SWITCH TO COPPER WATER LINE



**01 ELECTRICAL SCHEMATIC DIAGRAM**

RISER MODIFICATION: DELETE PANEL EP, DECREASE GENERATOR SIZE, FEEDER SIZE, ATS SIZE, AND TANK SIZE.



© COPYRIGHT 2008  
 UNITED ENGINEERING, INC.  
 15021-A BARBER RD.  
 McALLEN TEXAS  
 (361) 228-1183

PROJECT: \_\_\_\_\_  
 DATE: \_\_\_\_\_  
 SHEET: \_\_\_\_\_

# ALAMO FIRE STATION

CITY OF ALAMO, TEXAS

## AGADC

Alcoer Garcia-Associates  
 Design Consulting  
 1333 E. JSMINE AVE  
 McALLEN, TEXAS 78201  
 TEL. 956.818.2017 FAX 956.818.2008  
 E-MAIL: AGADC@GMAIL.COM

PAGE  
**E6R3.2**



REVISIONS

NO.	DATE	SHEET#
1	8/29/08	E6
2	9/24/08	E6
3	11/10/08	E6

DELETION OF PANEL EP.

EP	AMP	LINKS	NEMA	(UL)	MANUFACTURER	(P)	(N)	(L)	(M)	KAC	FDR		
100	MB	SR	200	CUTLER HAMMER	3	4	120	MNT	10	1-RUN 441 180; 1 1/2"			
LOAD SERVED	CKT #	LOAD KVA	BKR SIZE	POLE	FEDDER SIZE	A	B	C	POLE	BKR SIZE	LOAD KVA	CKT #	RESERVED
Emergency Rept.	1	5.2	50	2	3MS-1100.1TC							52	
	2	5.2										54	Emergency SPARE
	3	5.2										56	
	4	5.2										58	
	5	5.2										60	
	6	5.2										62	
	7	5.2										64	
	8	5.2										66	
	9	5.2										68	
	11	5.2										70	
	13	5.2										72	
	15	5.2										74	
	17	5.2										76	
	19	5.2										78	
	21	5.2										80	
	23	5.2										82	
	25	5.2										84	
	27	5.2										86	
	29	5.2										88	
	31	5.2										90	
	33	5.2										92	
	35	5.2										94	
	37	5.2										96	
	39	5.2										98	
	41	5.2										100	
LOADS	-		(KVA)				10	5	5		(KVA)	RESERVED LOADS	
CONNECTED LOAD	-		21								0	LIGHTING	
RESERVE	-		0								0	FREDEPACUIS	
TOTAL LOAD	-		21								0	COOLING	
	-										0	HEATING	
TOTAL AMPS	-		58								21	OTHER	

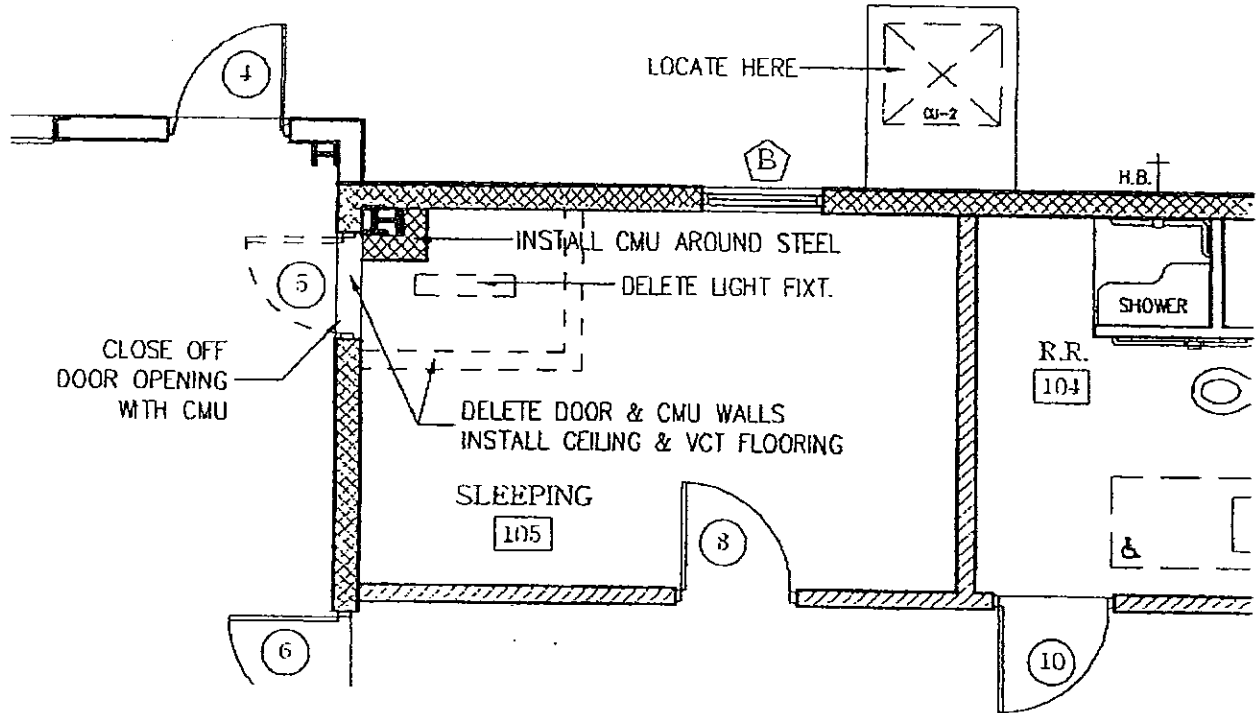
DELETION OF PANEL EP.



# ALAMO FIRE STATION

CITY OF ALAMO, TEXAS

**AGADC**  
 Alcocer Garcia Associates  
 Design Consulting  
 11333 E. JASMINE AVE.  
 MCALLI DL, TEXAS 78501  
 TEL: 361.818.2907 FAX: 361.818.2008  
 E-MAIL: AGAD@AGADC.COM

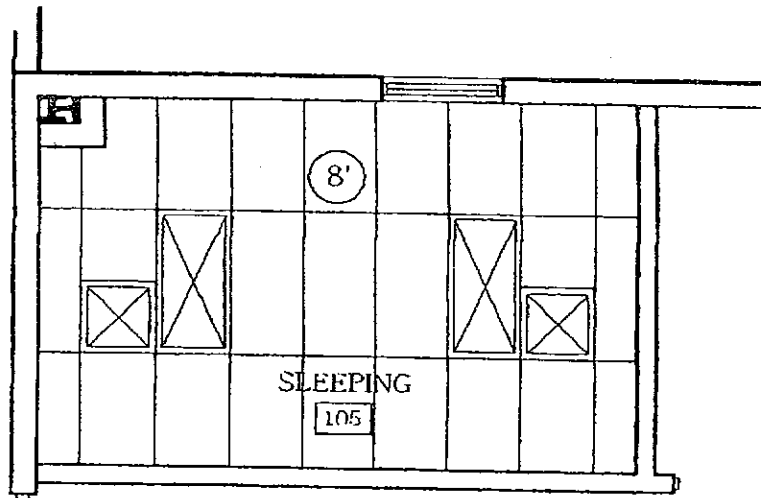


NORTH



### REVISED SLEEPING RM.

SCALE: 3/16" = 1'-0"



### REVISED SLEEPING RM. CEILING

SCALE: 3/16" = 1'-0"

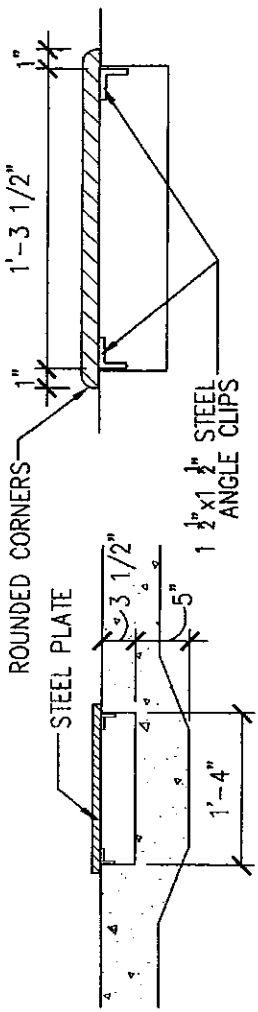
8.18.08

# ALAMO FIRE STATION

CITY OF ALAMO, TEXAS

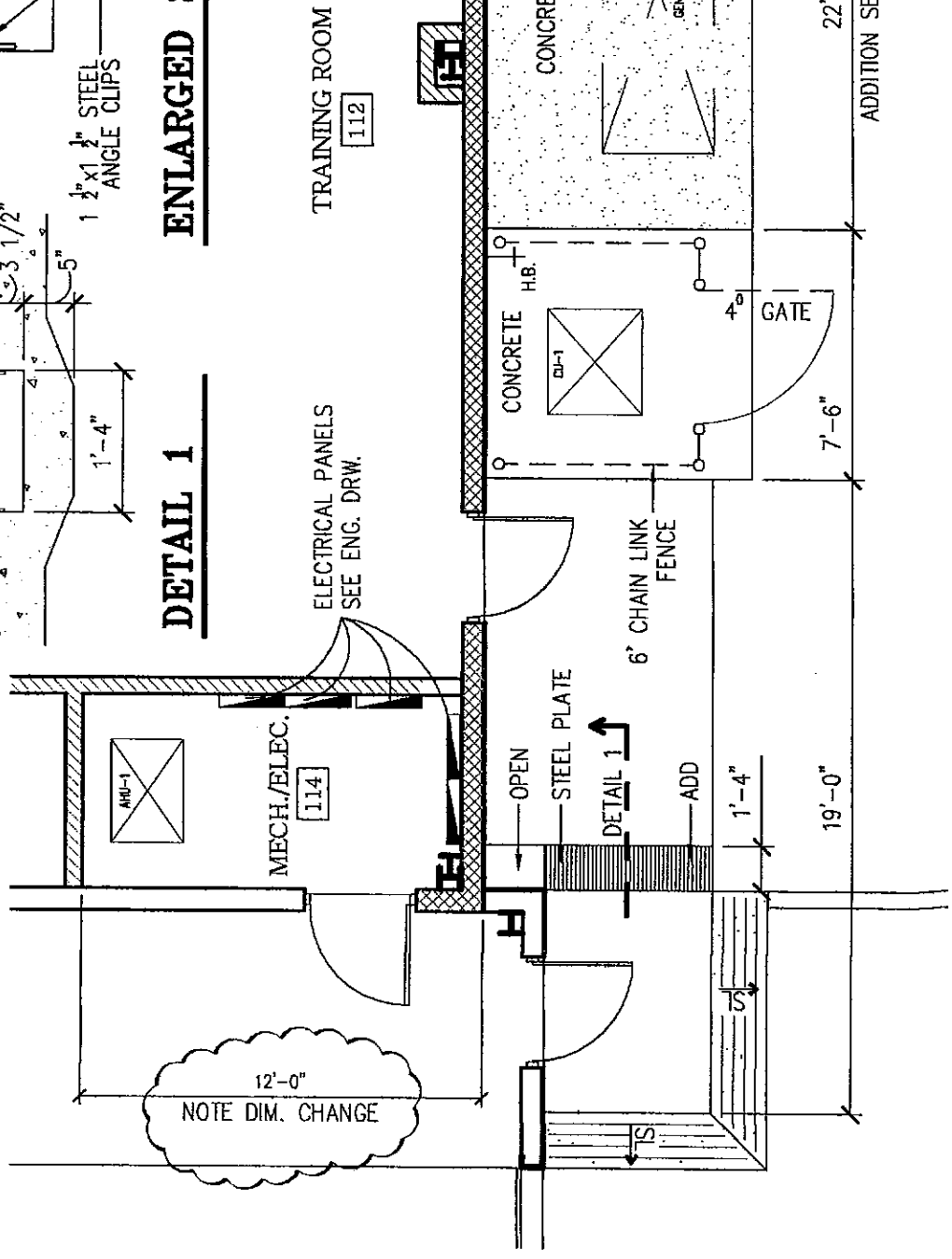
**AGADC**  
 Alamo Area Association  
 Design Consulting  
 1333 E. JORDAN AVE.  
 SAN ANTONIO, TEXAS 78201  
 TEL. 512.381.3227 FAX 512.381.3228  
 E-MAIL AGADC@AGADC.COM

PAGE  
 1 OF 3



**ENLARGED STEEL PLATE**

**DETAIL 1**



12'-0"  
NOTE DIM. CHANGE



**REVISED PLAN**

SCALE: 3/16" = 1'-0"

9.5.08

**ALAMO FIRE STATION**

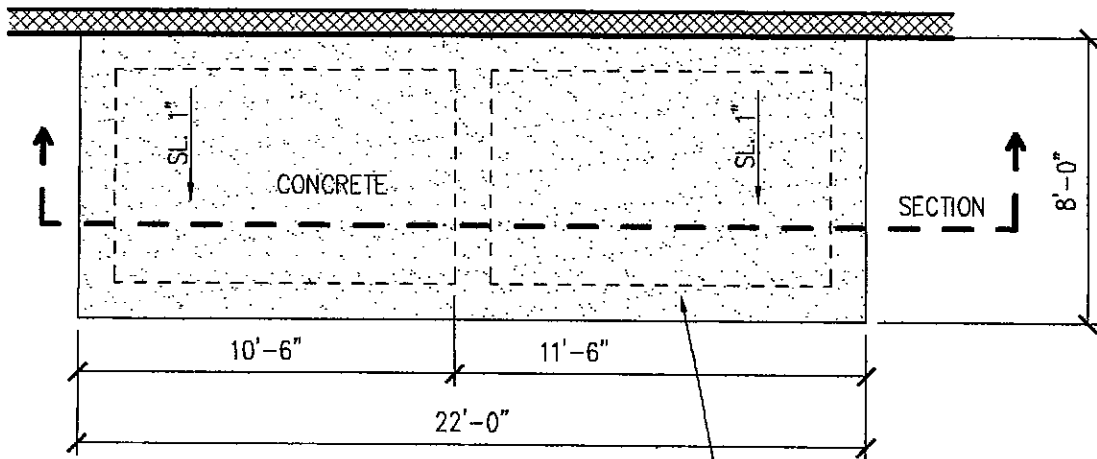
CITY OF ALAMO, TEXAS

**AGADC**  
Alcocer Garcia Associates  
Design Consulting  
1333 E. ASHME AVE.  
MCKENNA, TEXAS 78201  
TEL. 958.818.2007 FAX 958.818.2008  
E-MAIL AGADC@GOC.COM

PAGE  
**2 OF 2**

TRAINING ROOM

112



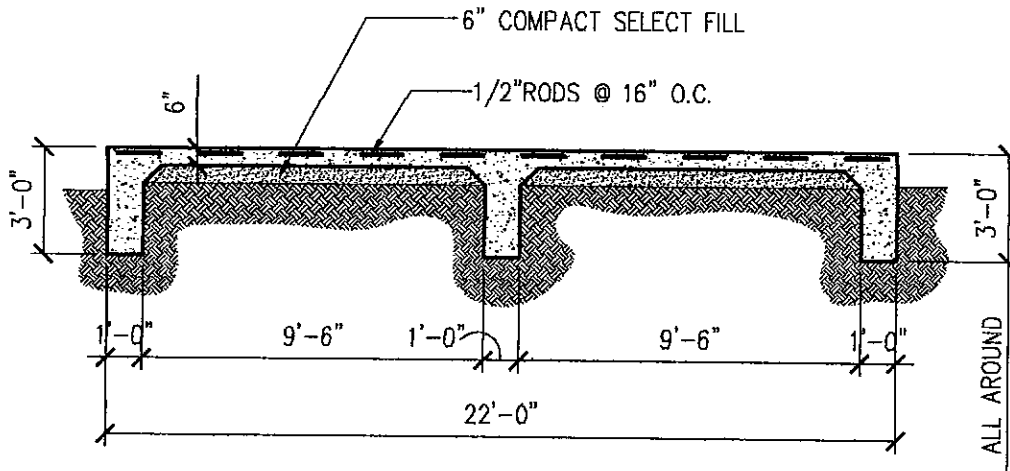
8'x22'-2800 P.S.I. CONCRETE SLAB.  
 6" THICK CONCRETE,  
 SET TOP OF CONCRETE  
 5" BELOW TOP OF  
 BUILDING SLAB

NORTH



**CONCRETE PAD**

SCALE: 3/16" = 1'-0"



**SECTION**

SCALE: 3/16" = 1'-0"

REVISED  
9.5.08

**ALAMO FIRE STATION**

CITY OF ALAMO, TEXAS

**AGADC**

Alcator Garcia Associates  
Design Consulting

1331 E. JASPER, AVE.  
MCKALLEN, TEXAS 75501  
TEL. 954.818.2007 FAX 954.818.2008  
E-MAIL AGM@AGADC.COM

PAGE

2 OF 2