

Agency Name: Hidalgo County Head Start

Head Start Outcomes Report for Hidalgo County Head Start

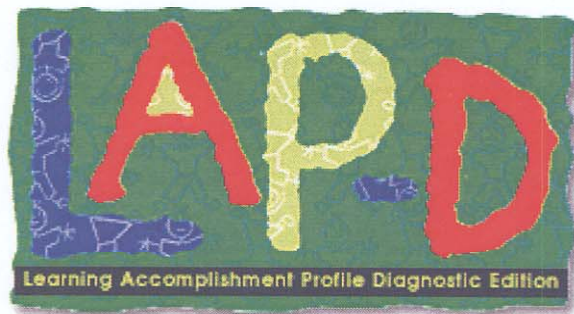
Based on Results From the LAP-D Assessment

Report Period: 08/18/2008 through 01/14/2009

Pre

Mid

Post



Head Start Child Outcome Framework:

Head Start programs must have in place an assessment system that not only measures and reports on a child's progress, but provides information useful for program planning and follow-up. As a standardized assessment instrument, the LAP-D measures children's developmental performance across four domains each containing two subscales and provides information concerning each child's developmental progress as compared to the normative sample. Two additional observation check-lists are included with the LAP-D for Personal/Social Development and Self-Help. The LAP-D provides information useful for measuring and reporting on a child's progress as well as aggregated data for program monitoring.

The following reports correlate the developmental milestones contained in the LAP-D to the Domains, Domain Elements, and Indicators from the Head Start Child Outcomes Framework. Selections were made based on the Domain, Domain Element and Indicator that most closely corresponded to the abilities of typically developing children at the developmental age for each milestone in the LAP-D. There are several instances in which specific milestone(s) could be associated with multiple indicators in the Outcomes Framework. For purposes of correlating the developmental milestones to the Outcomes Framework, we have kept items at a one-to-one association and matched the milestone to the indicator that best matches a child's ability at that age.

(The LAP-D does not measure progress towards listening, understanding and speaking English for non-English speaking children).

Tables 1 and 2 show the correspondence of the LAP-D to the Outcomes Framework. Legislatively, Head Start is required to collect and analyze data on thirteen specific Domain elements and/or indicators. Domains and/or Domain Elements containing these 13 items are denoted with an *.

Table 1

<u>Domain</u>	<u># of Milestones</u>
Language Development *	37
Literacy *	11
Mathematics *	52
Science	17
Creative Arts	3
Social & Emotional	35
Approaches to Learning	3
Physical Health & Development	168

Table 2 lists the Head Start Child Outcomes Framework, Domains, and Domain Elements and the individual LAP-D milestones associated with each Domain Element. Information contained in the LAP-D Milestone column refers to the LAP-D item number as shown in the scoring booklet

Table 2

<u>Domain</u>	<u>Domain Element</u>	<u>LAP-D Milestone</u>
Language Development	Listening and Understanding *	LC1,LC2,LC3,LC4,LC5,LC7,LC8,LC9,LC10,LC11,LC12,LC13
	Speaking and Communicating *	LN1,LN2,LN3,LN4,LN5,LN6,LN7,LN8,LN9,LN10,LN11,LN13,LN14,LN23,LN24,LN25,LN26
Literacy	Phonological Awareness *	CM24
	Book Knowledge and Appreciation *	FM3,FM7,LN21,LC15
	Print Awareness and Concepts *	LN30,LC23
	Early Writing	FW2,FW20
	Alphabet Knowledge *	LC22, LN27
Mathematics	Number and Operations *	CC1,CC8,CC10,CC12,CC13,CC14,CC15,CC16,CC17,CC18 CC19,CC20,CC21,CC22,CC23,CC24,CC25,CC26,CC27
	Geometry and Spatial Sense	FM17,FM18,FM20,FM21,FM23,CM5,CM6,CM7,CM12,CM16
	Patterns and Measurement	CC3,CC6,CC7,CC11,CM3,CM10,CM21
Science	Scientific Skills and Methods	CM8,CM9,CM19,LN19,LN28,LN29
	Scientific Knowledge	FW13,FW15,FW21,FW23, FW25,CC30,CM15,LN15,LN16,LN17,LN20
Creative Arts	Music	-
	Art	-
	Movement	PS40
	Dramatic Play	PS2,PS23
Social and Emotional Development	Self Concept	PS4,PS5,PS6,PS16,PS17,PS18,PS27,PS30,PS35
	Self-Control	PS14,PS20,PS21,PS34

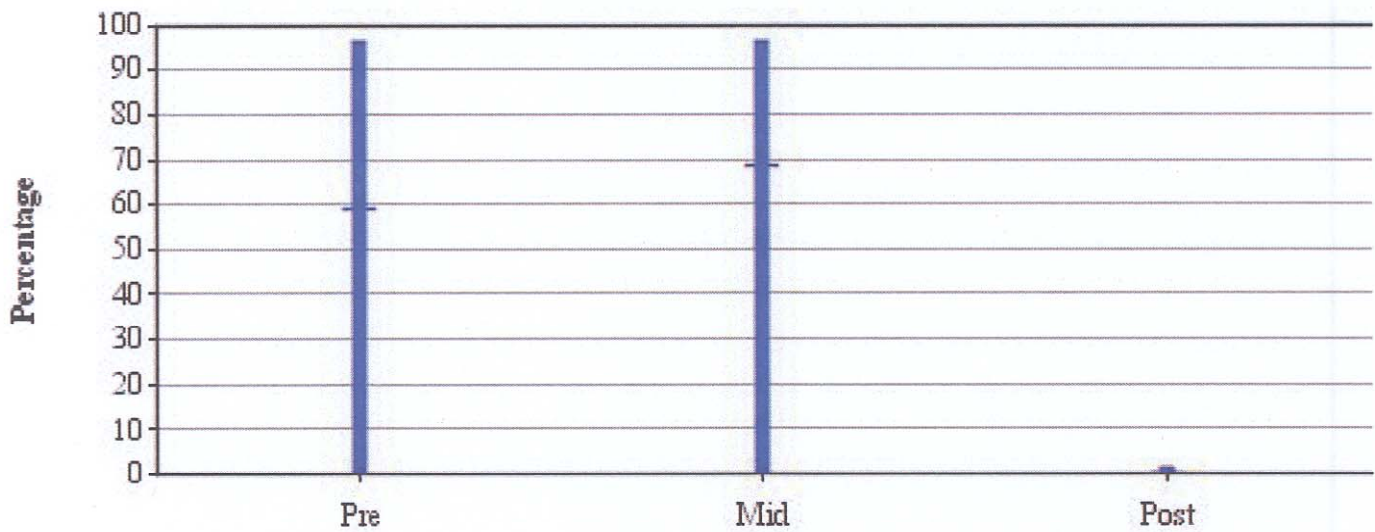
<u>Domain</u>	<u>Domain Element</u>	<u>LAP-D Milestone</u>
Social and Emotional Development	Cooperation	PS3,PS8,PS9,PS11,PS12,PS19,PS22,PS33,PS37,PS39
	Social Relationships	PS1,PS10,PS24,PS25,PS31,PS32,PS36
	Knowledge of Families and Communities	PS15,PS26,PS28,PS29,PS38
Approaches to Learning	Initiative and Curiosity	LN12,LN18,LN22
	Engagement and Persistence	-
	Reasoning and Problem Solving	-
Physical Health and Development	Fine Motor Skills	FM1,FM2,FM4,FM5,FM6,FM8,FM9,FM10,FM11,FM12 FM13,FM14,FM15,FM16,FM19,FM22,FM24,FM25,FM26 FM27,FM28,FW1,FW3,FW4,FW5,FW6,FW7,FW8,FW9 FW10,FW11,FW12,FW14,FW16,FW17,FW18,FW19 FW22,FW24,FW26,FW27,FW28,FW29,FW30,FW31 CC5,CM1,CM2,CM4,CM11,CM14
	Gross Motor Skills	GB1,GB2,GB3,GB4,GB5,GB6,GB7,GB8,GB9,GB10,GB11 GB12,GB13,GB14,GB15,GB16,GB17,GB18,GB19,GB20 GB21,GB22,GB23,GB24,GB25,GB26,GB27,GB28,GB29 GB30,GB31,GB32,GB33,GB34,GO1,GO2,GO3,GO4 GO5,GO6,GO7,GO8,GO9,GO10,GO11,GO12,GO13 GO14,GO15,GO16,GO17,GO18,GO19,GO20,GO21
	Health Status and Practices	SH1,SH2,SH3,SH4,SH5,SH6,SH7,SH8,SH9,SH10,SH11 SH12,SH13,SH14,SH15,SH16,SH17,SH18,SH19,SH20 SH21,SH22,SH23,SH24,SH25,SH26,SH27,SH28,SH29 SH30,SH31,SH32,SH33,SH34,SH35,SH36,SH37,SH38 SH39,SH40,SH41,SH42,SH43,SH44,SH45,SH46,SH47 SH48,SH49,SH50,SH51,SH52,SH53,SH54,SH55,SH56 SH57,SH58,SH59,SH60

Legend: FM Fine Motor: Manipulation GBGross Motor: Body Movement
 FW Fine Motor: Writing GOGross Motor: Object Movement
 CM Cognitive: Matching PSPersonal/Social
 CC Cognitive: Counting SHSelf-Help
 LN Language: Naming
 LC Language: Comprehension

The following report reflects the progress of children in the Head Start Domains at Hidalgo County Head Start over time.

Data is analyzed by comparing the number of milestones in each Domain mastered by each child in the program with the total number of potential milestones for that domain. Results are reflected over time showing the child's progress.

Domain: Language Development
 Domain Element: Listening and Understanding *
 Speaking and Communicating *



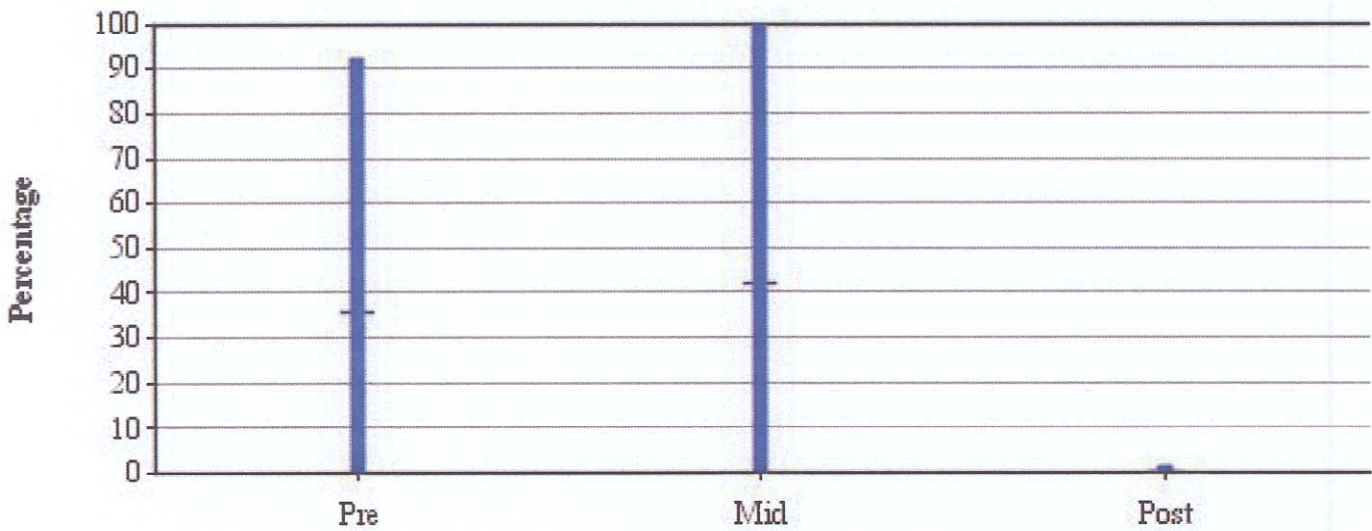
Lowest Percentage	0.00	0.00
Program Average	59.20	68.85
Highest Percentage	94.59	94.59

	<u>Pre</u>	<u>Mid</u>	<u>Post</u>
Number of Sites:	43	43	
Number of Children	3578	3371	
Average	59.20	68.85	
Avg. Percentage Gain <Loss>		9.65	

The following report reflects the progress of children in the Head Start Domains at Hidalgo County Head Start over time.

Data is analyzed by comparing the number of milestones in each Domain mastered by each child in the program with the total number of potential milestones for that domain. Results are reflected over time showing the child's progress.

Domain: Literacy
 Domain Element: Phonological Awareness *
 Book Knowledge and Appreciation *
 Print Awareness and Concepts *
 Early Writing
 Alphabet Knowledge *



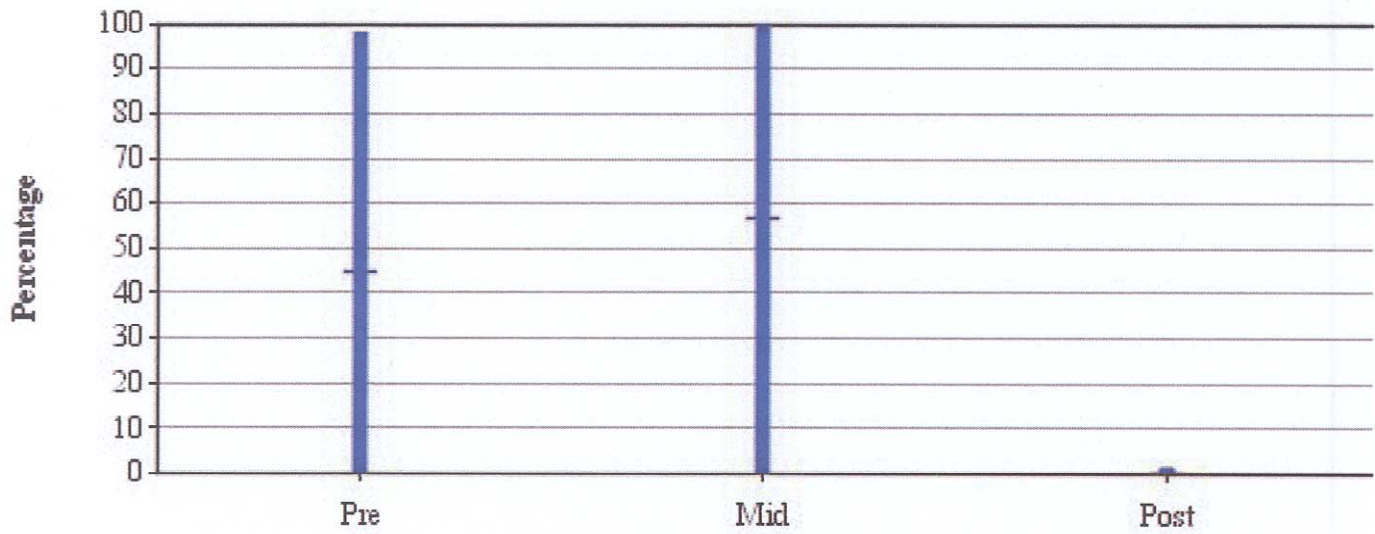
Lowest Percentage	0.00	0.00
Program Average	35.67	42.04
Highest Percentage	90.90	100.00

	<u>Pre</u>	<u>Mid</u>	<u>Post</u>
Number of Sites:	43	43	
Number of Children	3578	3371	
Average	35.67	42.04	
Avg. Percentage Gain <Loss>		6.37	

The following report reflects the progress of children in the Head Start Domains at Hidalgo County Head Start over time.

Data is analyzed by comparing the number of milestones in each Domain mastered by each child in the program with the total number of potential milestones for that domain. Results are reflected over time showing the child's progress.

Domain: Mathematics
 Domain Element: Number and Operations *
 Geometry and Spatial Sense
 Patterns and Measurements



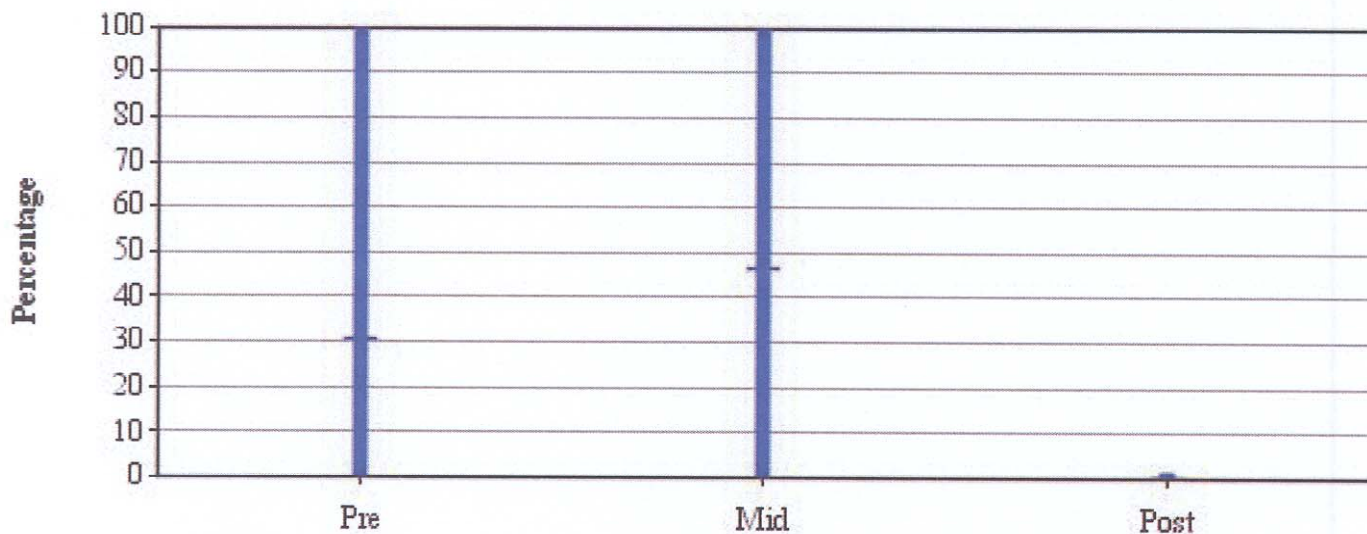
Lowest Percentage	0.00	0.00
Program Average	44.68	56.91
Highest Percentage	96.15	100.00

	<u>Pre</u>	<u>Mid</u>	<u>Post</u>
Number of Sites:	43	43	
Number of Children	3578	3371	
Average	44.68	56.91	
Avg. Percentage Gain <Loss>		12.23	

The following report reflects the progress of children in the Head Start Domains at Hidalgo County Head Start over time.

Data is analyzed by comparing the number of milestones in each Domain mastered by each child in the program with the total number of potential milestones for that domain. Results are reflected over time showing the child's progress.

Domain: Science
 Domain Element: Scientific Skills and Methods
 Scientific Knowledge



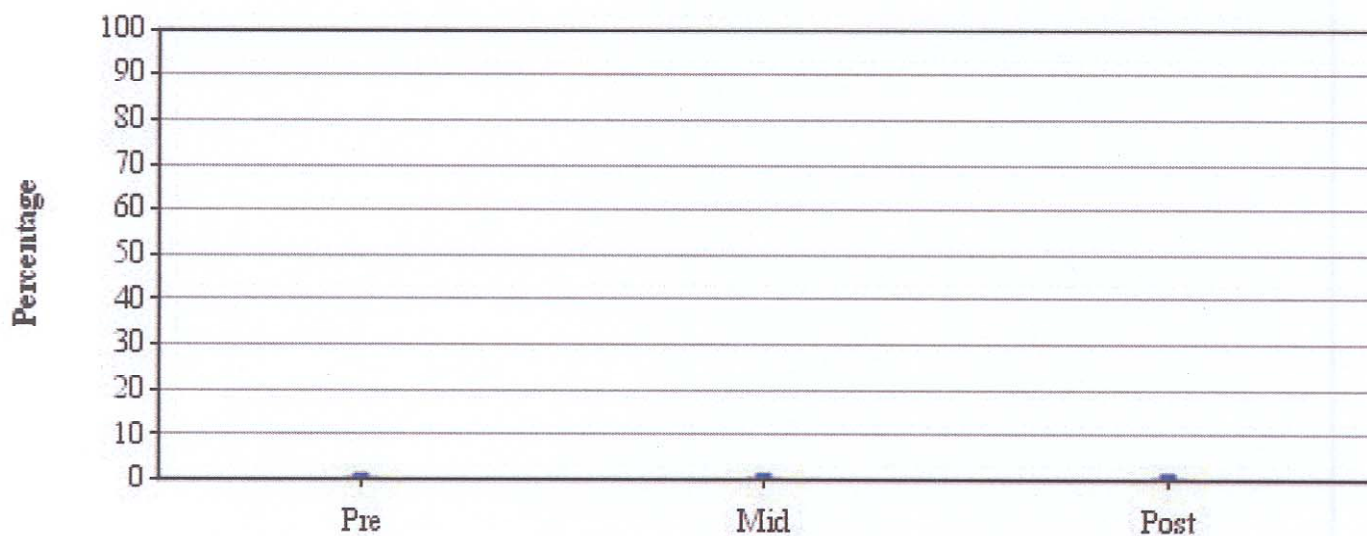
Lowest Percentage	0.00	0.00
Program Average	30.78	46.41
Highest Percentage	100.00	100.00

	<u>Pre</u>	<u>Mid</u>	<u>Post</u>
Number of Sites:	43	43	
Number of Children	3578	3371	
Average	30.78	46.41	
Avg. Percentage Gain <Loss>		15.62	

The following report reflects the progress of children in the Head Start Domains at Hidalgo County Head Start over time.

Data is analyzed by comparing the number of milestones in each Domain mastered by each child in the program with the total number of potential milestones for that domain. Results are reflected over time showing the child's progress.

Domain: Creative Arts
 Domain Element: Music
 Art
 Movement
 Dramatic Play



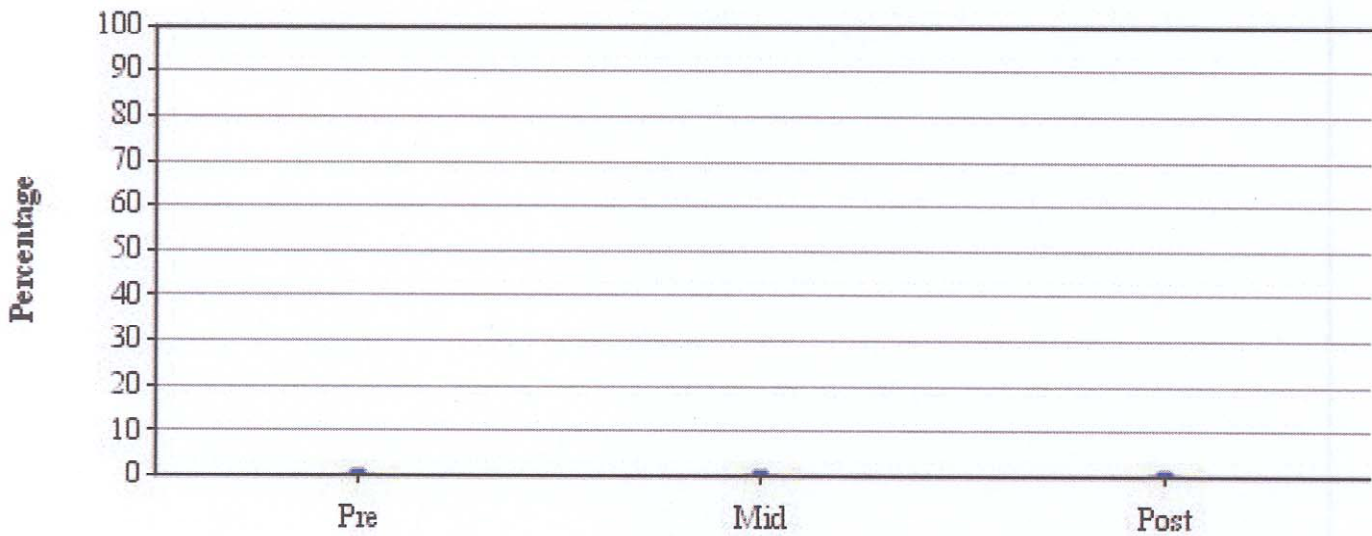
Lowest Percentage	0.00	0.00
Program Average	0.00	0.00
Highest Percentage	0.00	0.00

	<u>Pre</u>	<u>Mid</u>	<u>Post</u>
Number of Sites:	43	43	
Number of Children	3578	3371	
Average	0.00	0.00	
Avg. Percentage Gain <Loss>		0.00	

The following report reflects the progress of children in the Head Start Domains at Hidalgo County Head Start over time.

Data is analyzed by comparing the number of milestones in each Domain mastered by each child in the program with the total number of potential milestones for that domain. Results are reflected over time showing the child's progress.

Domain: Social and Emotional Development
 Domain Element: Self Concept
 Self-Control
 Cooperation
 Social Relationships
 Knowledge of Families and Communities



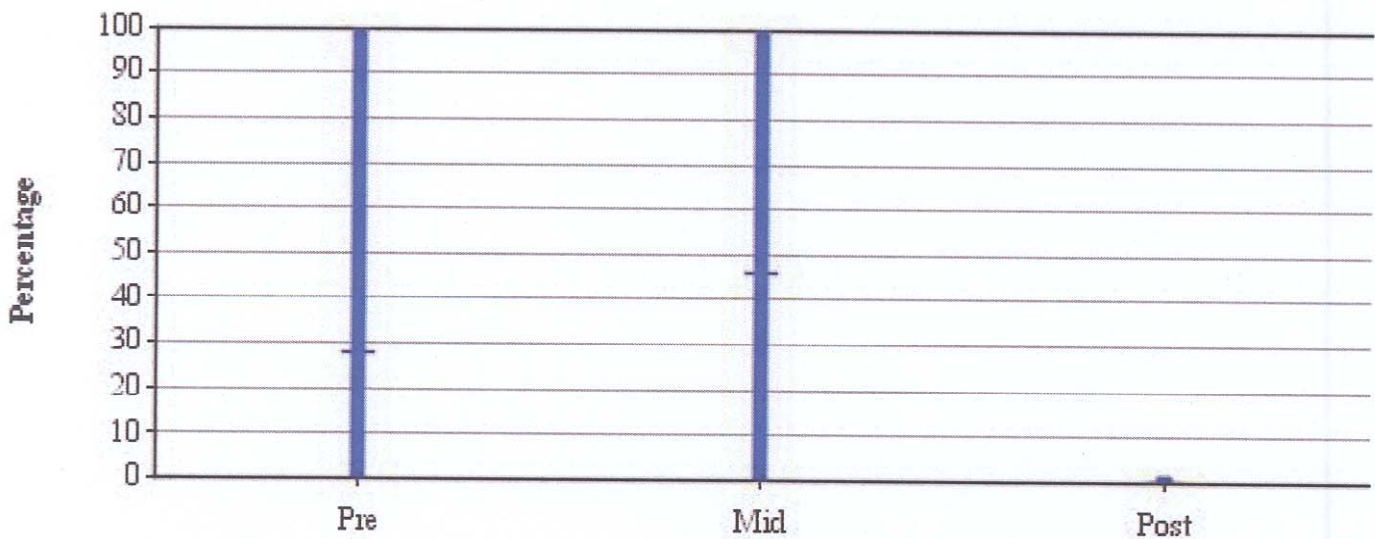
Lowest Percentage	0.00	0.00
Program Average	0.00	0.00
Highest Percentage	0.00	0.00

	<u>Pre</u>	<u>Mid</u>	<u>Post</u>
Number of Sites:	43	43	
Number of Children	3578	3371	
Average	0.00	0.00	
Avg. Percentage Gain <Loss>		0.00	

The following report reflects the progress of children in the Head Start Domains at Hidalgo County Head Start over time.

Data is analyzed by comparing the number of milestones in each Domain mastered by each child in the program with the total number of potential milestones for that domain. Results are reflected over time showing the child's progress.

Domain: Approaches to Learning
 Domain Element: Initiative and Curiosity
 Engagement and Persistence
 Reasoning and Problem Solving



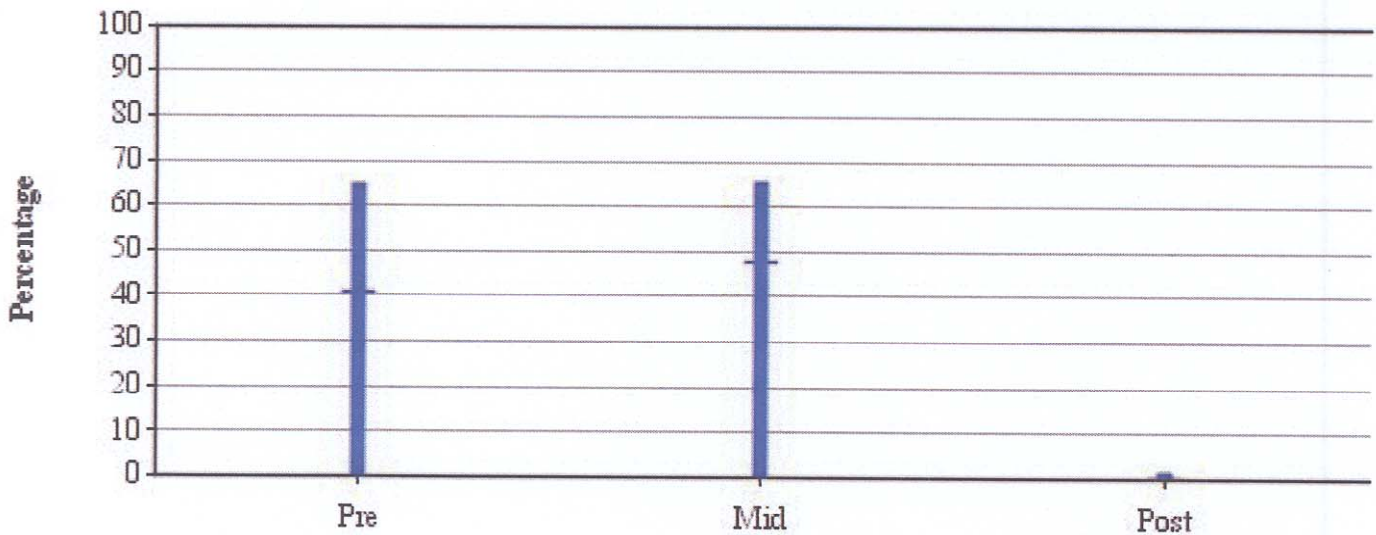
Lowest Percentage	0.00	0.00
Program Average	27.93	45.74
Highest Percentage	100.00	100.00

	<u>Pre</u>	<u>Mid</u>	<u>Post</u>
Number of Sites:	43	43	
Number of Children	3578	3371	
Average	27.93	45.74	
Avg. Percentage Gain <Loss>		17.82	

The following report reflects the progress of children in the Head Start Domains at Hidalgo County Head Start over time.

Data is analyzed by comparing the number of milestones in each Domain mastered by each child in the program with the total number of potential milestones for that domain. Results are reflected over time showing the child's progress.

Domain: Physical Health and Development
 Domain Element: Fine Motor Skills
 Gross Motor Skills
 Health Status and Practices



Lowest Percentage	0.00	0.00
Program Average	40.71	47.62
Highest Percentage	63.69	64.28

	<u>Pre</u>	<u>Mid</u>	<u>Post</u>
Number of Sites:	43	43	
Number of Children	3578	3371	
Average	40.71	47.62	
Avg. Percentage Gain <Loss>		6.91	