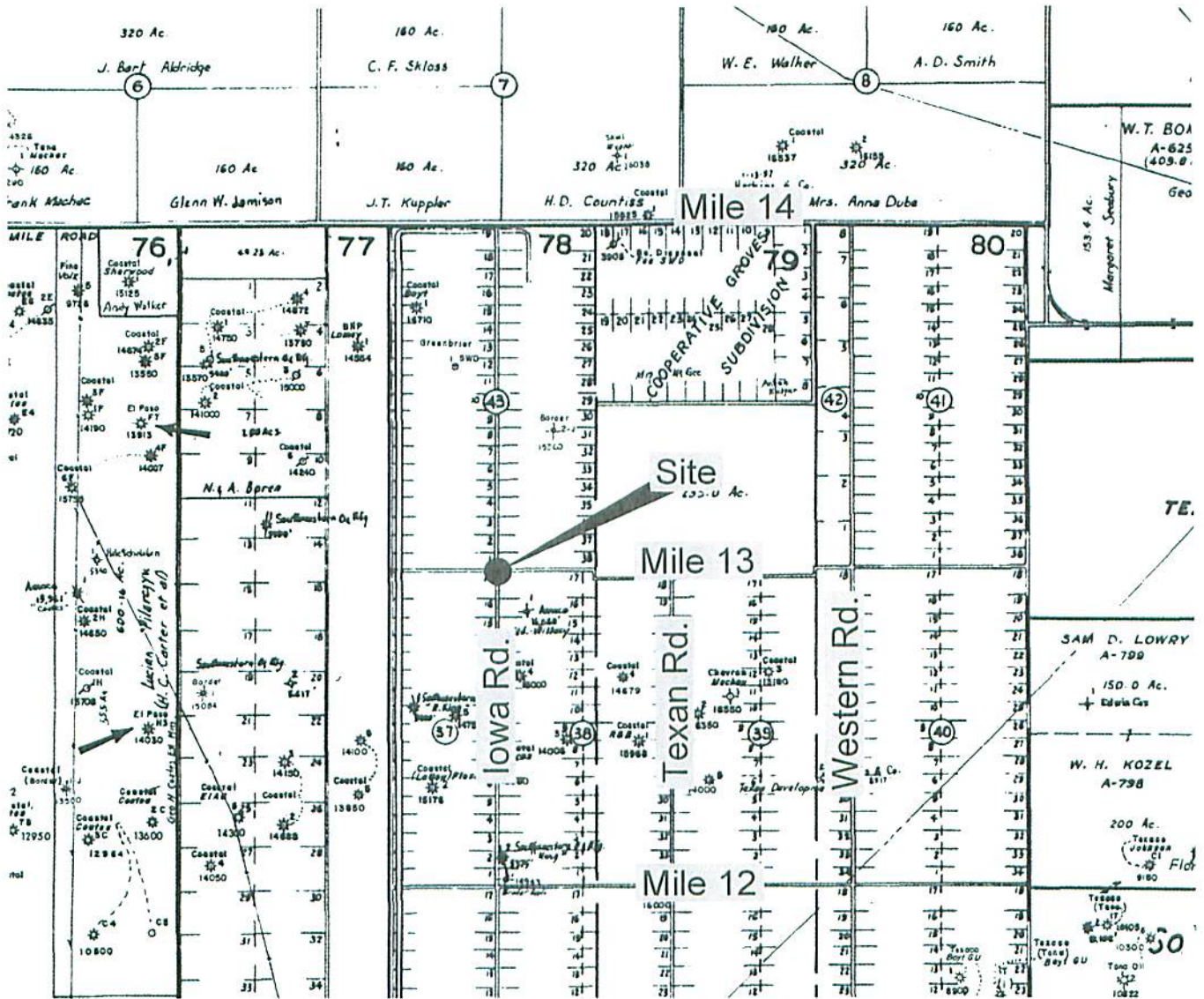


EXISTING PIPELINE
Texas Garden System (Teco) 12"
 PIPELINE 607
 Excavation Site for Culvert Repair and Replacement
 HIDALGO COUNTY, TEXAS

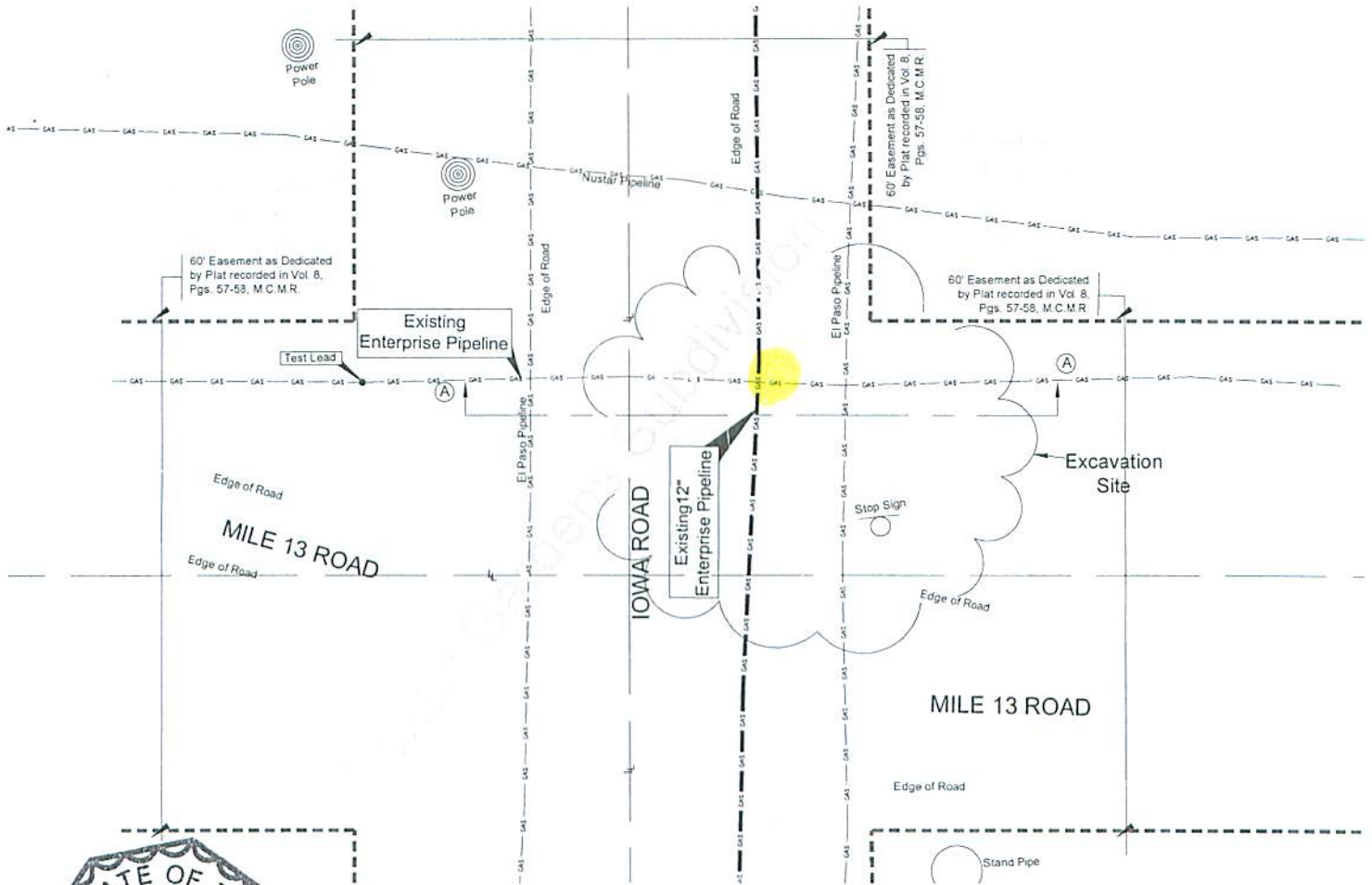
1



Location Map
 (Intersection of 13 Mile and Iowa Rd.)

REF. DWG. (031309-0065A MILE13) PL SURVEY.DWG SHT. 1 OF 2 AFE NO. P05896 REVISED 4/13/09

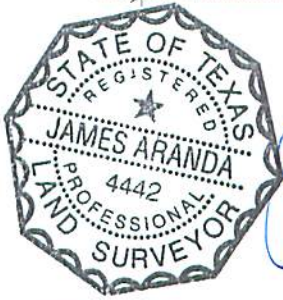
		EXISTING PIPELINE CROSSING Texas Garden System (Teco) 12" PIPELINE 607 Excavation Site for Culvert Repair and Replacement HIDALGO COUNTY, TEXAS					
Prepared By:  ARANDA AND ASSOCIATES, INC. LAND SURVEYING AND MAPPING COMPANY McALLEN, TEXAS		DRAWN BY: SA CHECKED BY: JA APPROVED BY: JA		APPROVED Design Engr. SHEET 1 of 2		APPROVED Supervising Engr. A DWG-607-1	
DATE 04/13/09 DATE 04/13/09 DATE 04/13/09		SCALE FB. NA PG. N/A AFE P05896		APPROVED Design Engr. SHEET 1 of 2		APPROVED Supervising Engr. A DWG-607-1	



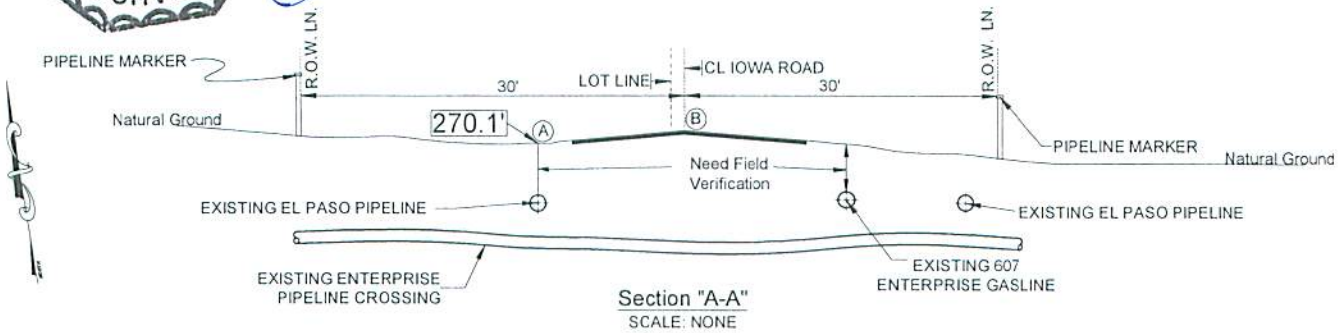
PLAN
SCALE: NONE

POINT	ELEVATION TABLE	
A	270.1'	Natural Ground
B	270.2'	Natural Ground

* Elevations are MSL, NAVD88



James Aranda
4/13/09



Section "A-A"
SCALE: NONE

PIPE DATA: Existing Line 607
(A) 12.750" O.D. x 0.250" W.T., AP15LX-52,
DESIGN PRESS: 1168 P.S.I.G. TEST PRESS: 1530 P.S.I.G.

REF. DWG. (031309-0065A MILE13) PL SURVEY.DWG SHT. 2 OF 2 AFE NO. P05896 REVISED 4/13/09



Prepared By: **ARANDA AND ASSOCIATES, INC.**
LAND SURVEYING AND MAPPING COMPANY
MALLEN, TEXAS

EXISTING PIPELINE
Texas Garden System (Teco) 12"
PIPELINE 607
Excavation Site for Culvert Repair and Replacement
HIDALGO COUNTY, TEXAS

DRAWN BY: SA	DATE 04/13/09	SCALE NTS	APPROVED	Design Engr.	APPROVED	Supervising Engr.
CHECKED BY: JA	DATE 04/13/09	FB. NA PG. N/A				
APPROVED BY: JA	DATE 04/13/09	AFE P05896	SHEET 2 of 2	A	DWG-607-1	