

KERR-MCGEE Oil and Gas Onshore LP
 Att: James Williams
 Vol. 2220, Pg. 401
 H.C.D.R.

Texas Gardens Subdivision
 Lot 5, Block 5
 Vol. 8, Pg. 58

Texas Gardens Subdivision
 Lot 5, Block 6
 Vol. 8, Pg. 58

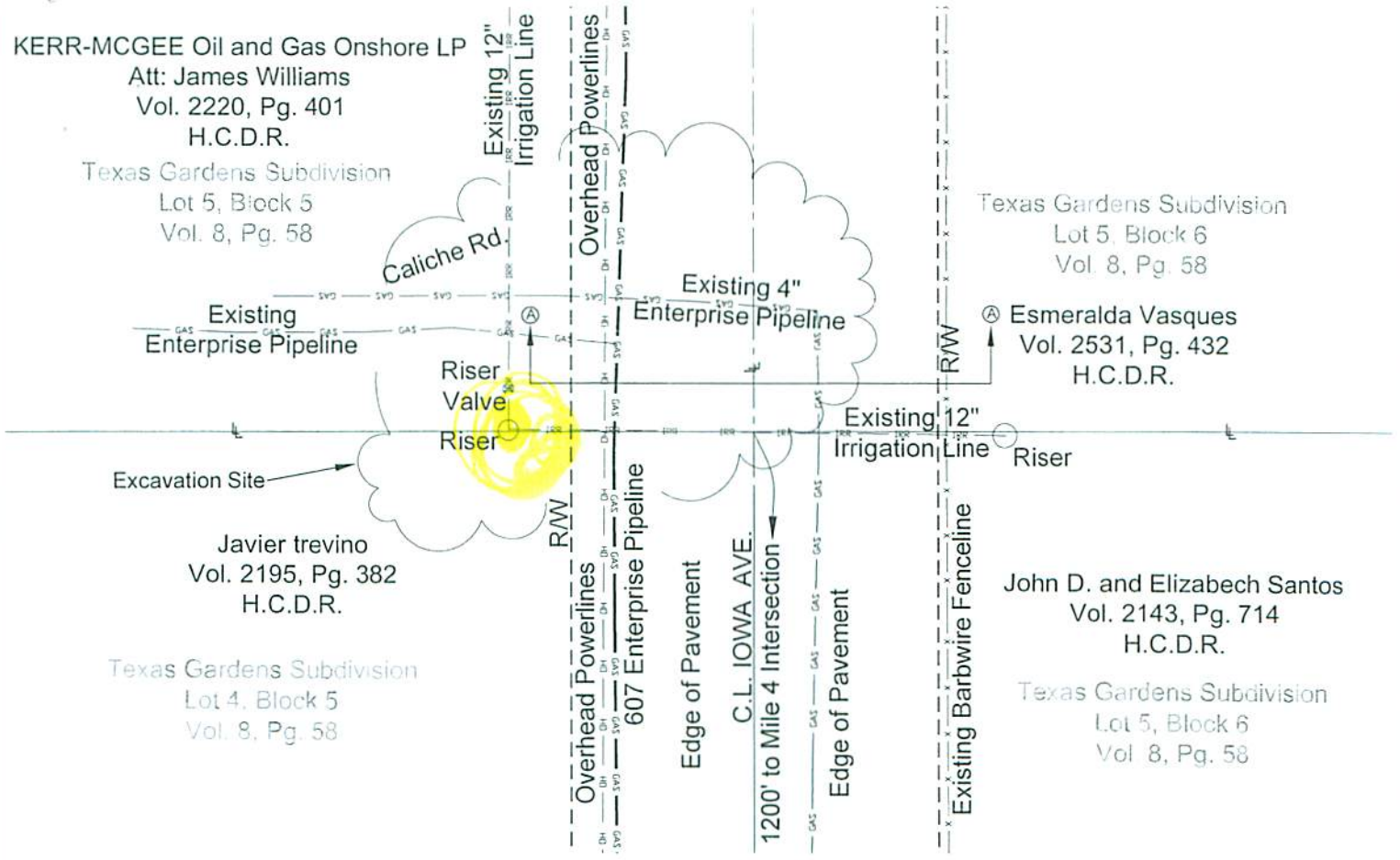
Esmeralda Vasques
 Vol. 2531, Pg. 432
 H.C.D.R.

Excavation Site
 Javier trevino
 Vol. 2195, Pg. 382
 H.C.D.R.

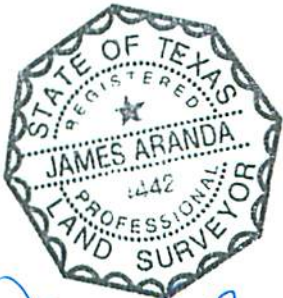
Texas Gardens Subdivision
 Lot 4, Block 5
 Vol. 8, Pg. 58

John D. and Elizabech Santos
 Vol. 2143, Pg. 714
 H.C.D.R.

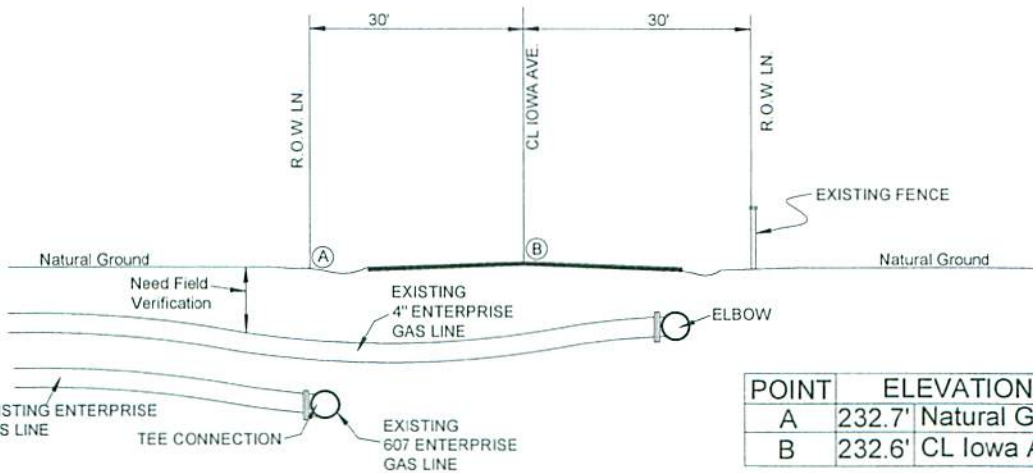
Texas Gardens Subdivision
 Lot 5, Block 6
 Vol. 8, Pg. 58



PLAN
 SCALE: NONE



James Aranda
 4/13/09



SECTION "A-A"
 SCALE: NONE

POINT	ELEVATION TABLE	
A	232.7'	Natural Ground
B	232.6'	CL Iowa Ave.

* Elevations are MSL, NAVD88

PIPE DATA: EXISTING LINE 607
 12.75" O.D. x 0.250" W.T., AP15LX-52,
 DESIGN PRESS: 1168 P.S.I.G. TEST PRESS: 1530 P.S.I.G.

REF DWG (031309-0065C MILE13) PL SURVEY.DWG SHT. 2 OF 2 AFE NO. P05896 REVISED 4/13/09



Prepared By: ARANDA AND ASSOCIATES, INC.
 LAND SURVEYING AND MAPPING COMPANY
 McALLEN, TEXAS

EXISTING PIPELINE CROSSING
 Texas Garden System (Teco) 12"
 PIPELINE 607
 Excavation Site for Riser Valve Installation
 HIDALGO COUNTY, TEXAS

DRAWN BY: NC	DATE: 03/17/09	SCALE: NTS	APPROVED	Design Engr.	APPROVED	Supervising Engr.
CHECKED BY: SA	DATE: 03/17/09	FB: N/A PG: N/A	SHEET 2 OF 2	A	DWG-607-3	
APPROVED BY: JA	DATE: 04/06/09	AFE: P05896				