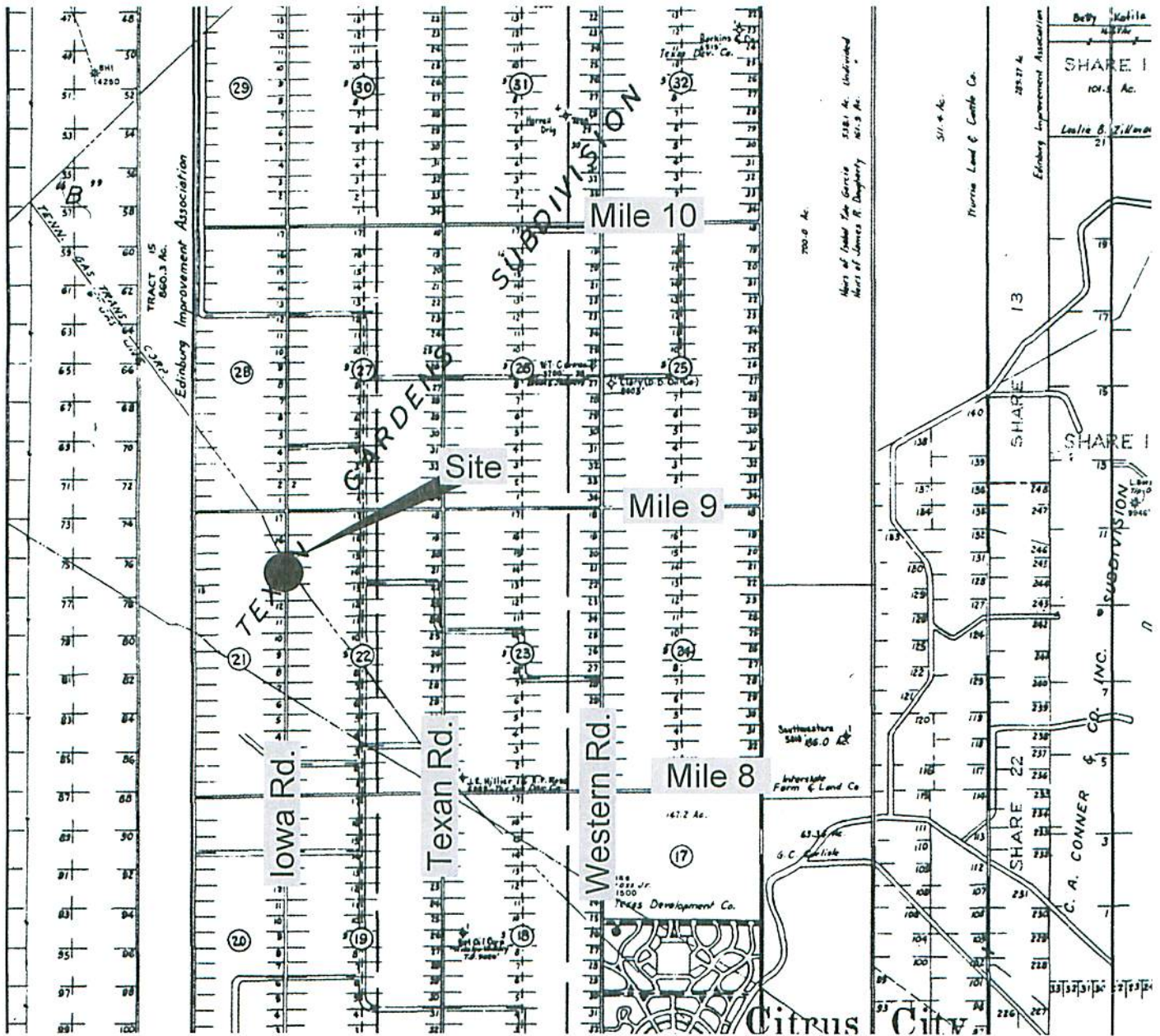


EXISTING PIPELINE
Texas Garden System (Teco) 12"
 PIPELINE 607
 Excavation Site for Manhole Replacement and Repair
 HIDALGO COUNTY, TEXAS

2



Location Map
 (1/4 Mile South of Mile 9 on Iowa Rd.)

REF DWG (031309-0065B MILE13) PL SURVEY.DWG SHT. 1 OF 2 AFE NO. P05896 REVISED 4/13/09



Prepared By: **ARANDA AND ASSOCIATES, INC.**
 LAND SURVEYING AND MAPPING COMPANY
 McALLEN, TEXAS

EXISTING PIPELINE
Texas Garden System (Teco) 12"
 PIPELINE 607
 Excavation Site for Manhole Replacement and Repair Site
 HIDALGO COUNTY, TEXAS

DRAWN BY: SA	DATE: 04/13/09	SCALE: NTS	APPROVED	Design Engr.	APPROVED	Supervising Engr.
CHECKED BY: JA	DATE: 04/13/09	FB. NA PG. N/A	SHEET 1 of 2	A	DWG-607-2	
APPROVED BY: JA	DATE: 04/13/09	AFE P05896				

Texas Gardens Subdivision
 Lot 15, Block 21
 Vol. 8, Pg. 58

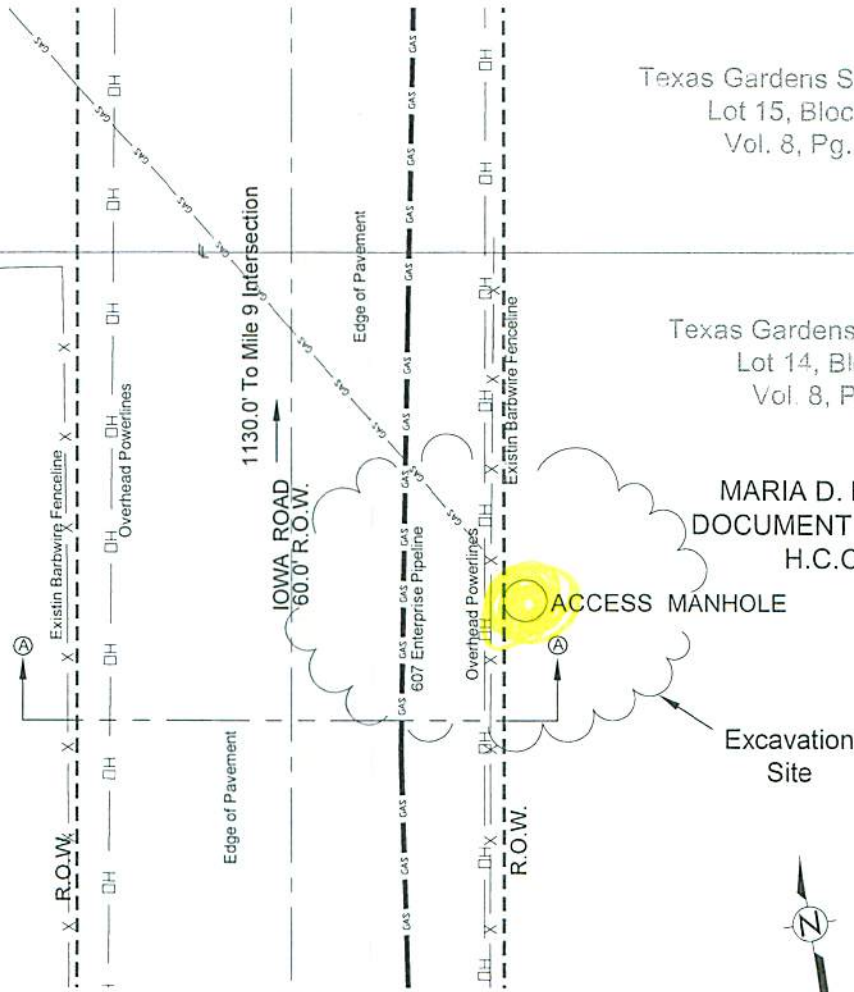
Texas Gardens Subdivision
 Lot 15, Block 22
 Vol. 8, Pg. 58

Texas Gardens Subdivision
 Lot 14, Block 21
 Vol. 8, Pg. 58

Texas Gardens Subdivision
 Lot 14, Block 22
 Vol. 8, Pg. 58

JOSE ANGEL CAVAZOS
 VOL. 3195, PG. 614
 H.C.D.R.

MARIA D. FLORES
 DOCUMENT # 1613459
 H.C.O.R.



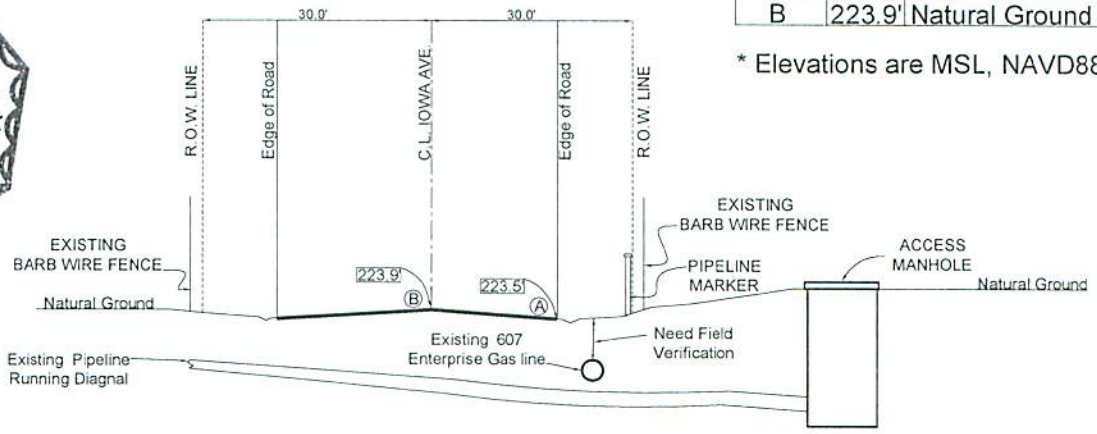
PLAN
 SCALE: NTS

POINT	ELEVATION TABLE
A	223.5' Natural Ground
B	223.9' Natural Ground

* Elevations are MSL, NAVD88



James Aranda
 4/13/09



SECTION "A-A"
 SCALE: NTS

PIPE DATA: Existing Line 607
 12.750" O.D. x 0.250" W.T., AP15LX-52,
 DESIGN PRESS: 1168 P.S.I.G. TEST PRESS: 1530 P.S.I.G.

REF. DWG. (031309-0065B MILE13) PL SURVEY.DWG SHT. 2 OF 2 AFE NO. P05896 REVISED 4/13/09

			EXISTING PIPELINE CROSSING Texas Garden System (Teco) 12" PIPELINE 607 Excavation Site for Manhole Replacement and Repair HIDALGO COUNTY, TEXAS		
Prepared By: ARANDA AND ASSOCIATES, INC. LAND SURVEYING AND MAPPING COMPANY McALLEN, TEXAS			APPROVED _____ Design Engr. APPROVED _____ Supervising Engr.		
DRAWN BY: EA CHECKED BY: JA APPROVED BY: _____	DATE: 04/13/09 DATE: 04/13/09 DATE: 04/13/09	SCALE: NTS FB. N/A PG. N/A AFE P05896	SHEET: 2 of 2	A	DWG-607-2