

Hidalgo County Head Start Program Policy Council Agenda

DATE: July 15, 2009

SUBJECT: Discussion/Approval on Request to Enter Into a Rental Agreement with Kyocera Mita America, Inc. Through the Texas Building And Procurement Commission State Contract #985-A6, in the Amount of \$4,372.91 for Fifty-Five (55) copiers per month for the following locations: Forty-Two (42) Copiers Head Start Centers, Three (3) Child Nutrition Department, and Ten (10) Head Start Administrative Departments.

RATIONAL NEEDED: This would allow the rental of the best pre-bided prices on copiers under the Texas Building And Building Procurement Commission State Contract.

RECOMMENDATION: Administration recommends approval.

COST: \$4,372.91/month

RELATED INFORMATION INCLUDED: Participant Info/Distribution List

INITIATED BY: Ambrosio Tovar, Procurement Director

DREVIEWED BY: Mr. Edmundo Garcia, Assistant Director

PROGRAM DIRECTOR'S APPROVAL: *Lerena Flores*



HIDALGO COUNTY HEAD START PROGRAM

P. O. BOX 0117 ♠ EDINBURG, TEXAS 78540-0117 ♠ TEL: (956) 383-0706 ♠ FAX: (956) 380-2588

To: Edmundo Garcia, Assistant Director

From: Ambrosio Tovar, Procurement Director *at*

Date: June 16, 2009

Sub: Rental of Copy Machines

We are in the process of renting new copy machines for all Head Start centers and departments as well as the Child Nutrition departments.

We are recommending the Copy Star copiers from Kyocera Mita America, Inc. through the Texas Building and Procurement Commission. This company has proven itself by providing quick and good customer service to the Hidalgo County Head Start Program for the past three years.

The overall monthly cost has decrease from the prior agreement from \$4,722.76 to \$4,372.91. We were able to identify the usage by location as recorded for the past three years. With this information we were able to select the proper copier for each location.

Should you have any questions please let me know.

Thank you.

DIGITAL

COPIERS • PRINTERS • DOCUMENT MANAGEMENT

Proposal prepared for

HIDALGO COUNTY HEAD START

By

Daniel Montaña

Vice President



McAllen
4800 W Expressway 83
(956) 630-1877

Harlingen: (956) 428-1866
Toll Free: (800) 880-7807
Fax: (956) 631-7728

Brownsville
1600 University Blvd
(956) 554-3900

Valley Wide • Mexico Sales • Service • Leases • Rentals • Service Agreements

"Satisfaction Guarantee Policy"

Digital Office Systems ensures customer satisfaction by offering our clients the "Best Service in the Industry."

➤ *"Digital Satisfaction Guarantee"*

Digital Office Systems will replace the equipment with an equal or comparable machine, providing sale and service is rendered by Digital Office Systems and Manufacturers Engineer deems equipment no repairable.

➤ *"Training and Support"*

We at Digital Office Systems provide a training specialist to educate and provide ongoing training and support for your employees. In how to be more productive and efficient using our products at no additional cost, Personalizing each training.

➤ *"To Better Service Our Clients"*

Digital Office Systems has twelve (15) technicians trained to service all major brands of copiers & fax machines in the Mexico & South Texas Region.

➤ *"Management Open Door Policy"*

Management will closely monitor ALL "Satisfaction Issues" without hiding behind paperwork and clauses.

➤ *"Personal Attention to All "Satisfaction Issues"*

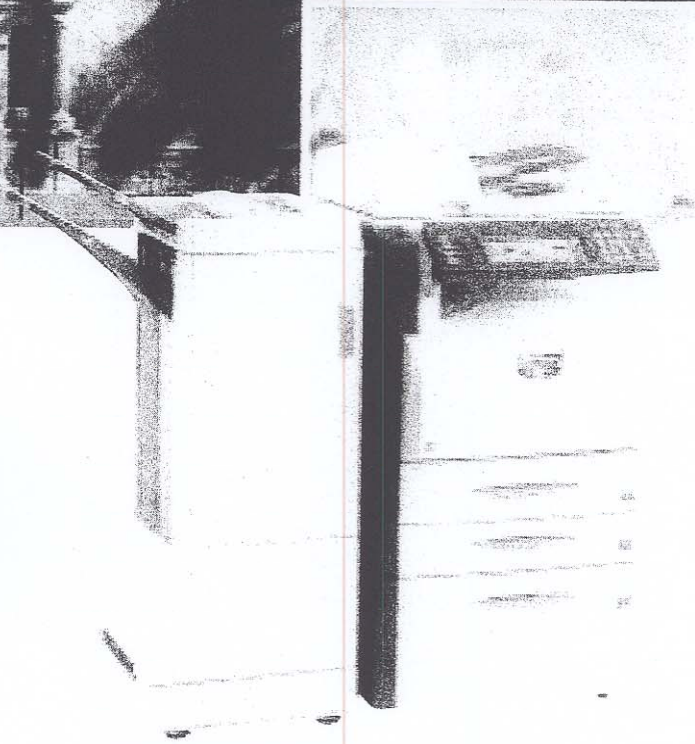
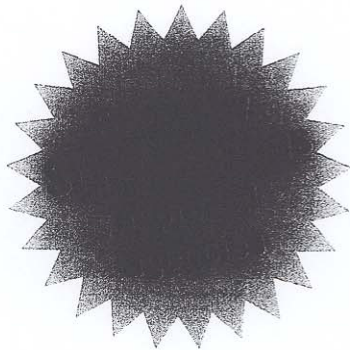
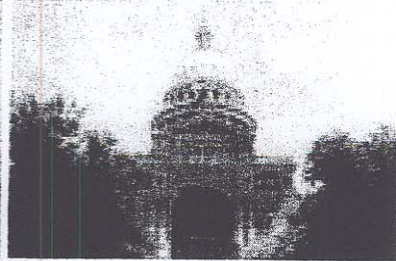
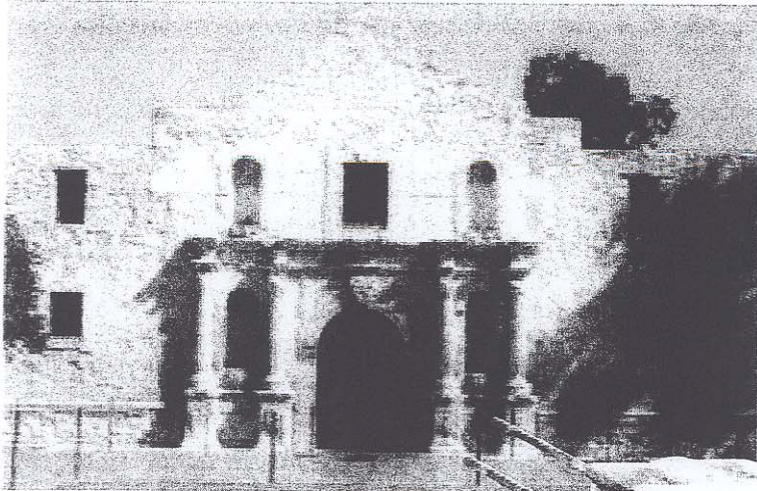
Your solutions advisor as well as upper management will attend "Satisfaction Issues" that may arise.

➤ *"On site checkups by Management Team Member"*

We will periodically perform check ups on equipment and service quality.

STATE OF TEXAS

Photocopiers,
Multi-functional Digital Equipment



STATE OF TEXAS

Rental Pricing

Contract Number: 985-A6

September 1, 2005 - August 31, 2009



Kyocera Mita America

National and Government Account Division

07/08

Ver071708

Digital Copiers • Networked Copiers • Facsimiles • Laser Printers • Color Copiers • Wide Format Copiers • Sales • Service • Supplies

June 16, 2009

Proposal Prepared For
HIDALGO COUNTY HEAD START
ADMINISTRATION

State of Texas Contract No. 985-A6-Photocopiers/Rental

Commodity Code 985-01-34120-4 Copier

COPYSTAR CS-1650

Digital Copier | Standard Network Print |

16 Copies Per Minute
 300-Sheet Drawer
 20k Max Monthly Volume
 Surge Protector

16 Prints Per Minute
 50-Sheet Multi-Purpose Tray
 50-Sheet Reversing Processor
 Stand

FEATURES: Display Screen Interface, 600 x 600 dpi, Fast 1200 dpi, *Copy/Print/Scan*, 256 Level Grayscale, Zoom 50% - 200% in 1% increments, Preset Reduction / Enlargement Settings, and Automatic Manual, Text, Photo & Combination Exposure Control, 64 MB Memory, Warm up time 20 seconds, FCOT 5.9 sec, FPOT 5.5 sec

DIGITAL EFFECTS: Electronic Sort, Copy Report, Machine Report, Toner Report, Auto Start, Image Rotation, 8 Job Programs, Electronic Sort, Book Erase, Sheet Erase, Margin Shift, Mixed Size Processing, Image Combination, Auto Exposure, Copy Interrupt, and ECO Print, Auto Selection for mixed sizes, Split Page Mode, 100 Management Accounts (User code, Page Limits)

MONTHLY RENTAL PRICING

| LOW VOLUME MONTHLY RENTAL | COPIES INCLUDED | EXCESS COPY CHARGE |
|---------------------------|-----------------|--------------------|
| \$78.27 | 5,000 | \$ 0.0185 |



Digital Copiers • Networked Copiers • Facsimiles • Laser Printers • Color Copiers • Wide Format Copiers • Sales • Service • Supplies

June 16, 2009

Proposal Prepared For
HIDALGO COUNTY HEAD START
ADMINISTRATION FAMILY SERVICE

State of Texas Contract No. 985-A6-Photocopiers/Rental

Commodity Code 985-01-66210-4 Copier

COPYSTAR CS-3060

Digital Copier | Network Print System | Network Color Scan System

30 Copies Per Minute
Dual 500 Sheet Drawers
1,000 Sheet S Finisher
Attachment Kit

Unlimited Duplex
50 Sheet Reversing Processor
Surge Protector

FEATURES: Display Screen Interface with Language Select, 600 x 600 dpi *Copy/Print, Scan* Fast 1200 Print Mode, 256 Level Grayscale, Zoom 25% - 400% in 1% increments, 5 Preset Reduction/Enlargement Settings, and Automatic Manual, Text, Photo & Combination Exposure Control, Auto Meter Reading by E-Mail

DIGITAL EFFECTS: Auto Magnification and Paper Select, Job Build, Job Finish Notice, Status Queue, Continuous Scan, Book Mode, Combine Image, Covers, Erase Mode, Form Overlay, Image Rotate, Image Reverse, Interrupt, 50 Job Programs, Margin Shift, Mirror Image, Page Numbering, Memo Mode, 1000 Management Codes, Auto Centering, XY Zoom, Help Guidance, Preview Image, Secure Printing, Print Job Storage, Box Printing

PRINT/COLOR SCAN FEATURES: Print 30 Pages Per Minute, 30/15 Color Scans per Minute, Shared System Memory, Scan to File/E-mail/FTP/TWAIN (Scan Soft, Paper Port), Windows® 95/98/Me/NT4.x/2000/XP/2003/Vista Compatible, Standard 10/100BaseTX, High Speed 2.0, PDF/TIFF/JPEG File Formats

MONTHLY RENTAL PRICING

| LOW VOLUME MONTHLY RENTAL | COPIES INCLUDED | EXCESS COPY CHARGE |
|---------------------------|-----------------|--------------------|
| \$210.94 | 10,000 | .0075 |



Digital Copiers • Networked Copiers • Facsimiles • Laser Printers • Color Copiers • Wide Format Copiers • Sales • Service • Supplies

June 16, 2009

Proposal Prepared For

HIDALGO COUNTY HEAD START

ADMINISTRATION - EDUCATION

State of Texas Contract No. 985-A6-Photocopiers/Rental

Commodity Code 985-01-66210-4 Copier

COPYSTAR CS-3060

Digital Copier | Network Print System | Network Color Scan System

30 Copies Per Minute
Dual 500 Sheet Drawers
1,000 Sheet S Finisher
Attachment Kit

Unlimited Duplex
50 Sheet Reversing Processor
Surge Protector

FEATURES: Display Screen Interface with Language Select, 600 x 600 dpi *Copy/Print, Scan* Fast 1200 Print Mode, 256 Level Grayscale, Zoom 25% - 400% in 1% increments, 5 Preset Reduction/Enlargement Settings, and Automatic Manual, Text, Photo & Combination Exposure Control, Auto Meter Reading by E-Mail

DIGITAL EFFECTS: Auto Magnification and Paper Select, Job Build, Job Finish Notice, Status Queue, Continuous Scan, Book Mode, Combine Image, Covers, Erase Mode, Form Overlay, Image Rotate, Image Reverse, Interrupt, 50 Job Programs, Margin Shift, Mirror Image, Page Numbering, Memo Mode, 1000 Management Codes, Auto Centering, XY Zoom, Help Guidance, Preview Image, Secure Printing, Print Job Storage, Box Printing

PRINT/COLOR SCAN FEATURES: Print 30 Pages Per Minute, 30/15 Color Scans per Minute, Shared System Memory, Scan to File/E-mail/FTP/TWAIN (Scan Soft, Paper Port), Windows® 95/98/Me/NT4.x/2000/XP/2003/Vista Compatible, Standard 10/100BaseTX, High Speed 2.0, PDF/TIFF/JPEG File Formats

MONTHLY RENTAL PRICING

| LOW VOLUME MONTHLY RENTAL | COPIES INCLUDED | EXCESS COPY CHARGE |
|---------------------------|-----------------|--------------------|
| \$210.94 | 10,000 | .0075 |



Digital Copiers • Networked Copiers • Facsimiles • Laser Printers • Color Copiers • Wide Format Copiers • Sales • Service • Supplies

June 16, 2009

Proposal Prepared For
HIDALGO COUNTY HEAD START
ADMINISTRATION FINANCE

State of Texas Contract No. 985-A6-Photocopiers/Rental

Commodity Code 985-01-34120-4 Copier

COPYSTAR CS-1650

Digital Copier | Standard Network Print |

16 Copies Per Minute
300-Sheet Drawer
20k Max Monthly Volume
Surge Protector

16 Prints Per Minute
50-Sheet Multi-Purpose Tray
50-Sheet Reversing Processor
Stand

FEATURES: Display Screen Interface, 600 x 600 dpi, Fast 1200 dpi, *Copy/Print/Scan*, 256 Level Grayscale, Zoom 50% - 200% in 1% increments, Preset Reduction / Enlargement Settings, and Automatic Manual, Text, Photo & Combination Exposure Control, 64 MB Memory, Warm up time 20 seconds, FCOT 5.9 sec, FPOT 5.5 sec

DIGITAL EFFECTS: Electronic Sort, Copy Report, Machine Report, Toner Report, Auto Start, Image Rotation, 8 Job Programs, Electronic Sort, Book Erase, Sheet Erase, Margin Shift, Mixed Size Processing, Image Combination, Auto Exposure, Copy Interrupt, and ECO Print, Auto Selection for mixed sizes, Split Page Mode, 100 Management Accounts (User code, Page Limits)

MONTHLY RENTAL PRICING

| LOW VOLUME MONTHLY RENTAL | COPIES INCLUDED | EXCESS COPY CHARGE |
|---------------------------|-----------------|--------------------|
| \$78.27 | 5,000 | \$ 0.0185 |



June 16, 2009

Proposal Prepared For
HIDALGO COUNTY HEAD START
ADMINISTRATION SPECIAL SERVICE

State of Texas Contract No. 985-A6-Photocopiers/Rental

Commodity Code 985-01-34120-4 Copier

COPYSTAR CS-1650

Digital Copier | Standard Network Print |

16 Copies Per Minute
 300-Sheet Drawer
 20k Max Monthly Volume
 Surge Protector

16 Prints Per Minute
 50-Sheet Multi-Purpose Tray
 50-Sheet Reversing Processor
 Stand

FEATURES: Display Screen Interface, 600 x 600 dpi, Fast 1200 dpi, *Copy/Print/Scan*, 256 Level Grayscale, Zoom 50% - 200% in 1% increments, Preset Reduction / Enlargement Settings, and Automatic Manual, Text, Photo & Combination Exposure Control, 64 MB Memory, Warm up time 20 seconds, FCOT 5.9 sec, FPOT 5.5 sec

DIGITAL EFFECTS: Electronic Sort, Copy Report, Machine Report, Toner Report, Auto Start, Image Rotation, 8 Job Programs, Electronic Sort, Book Erase, Sheet Erase, Margin Shift, Mixed Size Processing, Image Combination, Auto Exposure, Copy Interrupt, and ECO Print, Auto Selection for mixed sizes, Split Page Mode, 100 Management Accounts (User code, Page Limits)

MONTHLY RENTAL PRICING

| LOW VOLUME MONTHLY RENTAL | COPIES INCLUDED | EXCESS COPY CHARGE |
|---------------------------|-----------------|--------------------|
| \$78.27 | 5,000 | \$ 0.0185 |



Digital Copiers • Networked Copiers • Facsimiles • Laser Printers • Color Copiers • Wide Format Copiers • Sales • Service • Supplies

June 16, 2009

Proposal Prepared For
HIDALGO COUNTY HEAD START
ADMINISTRATION WAREHOUSE

State of Texas Contract No. 985-A6-Photocopiers/Rental

Commodity Code 985-01-34110-5 Copier

COPYSTAR CS-1650

Digital Copier | Standard Network Print

16 Copies Per Minute
 300-Sheet Drawer
 20k Max Monthly Volume
 Surge Protector

16 Prints Per Minute
 50-Sheet Multi-Purpose Tray
 50-Sheet Reversing Processor
 Stand

FEATURES: Display Screen Interface, 600 x 600 dpi, Fast 1200 dpi, *Copy/Print/Scan*, 256 Level Grayscale, Zoom 50% - 200% in 1% increments, Preset Reduction / Enlargement Settings, and Automatic Manual, Text, Photo & Combination Exposure Control, 64 MB Memory, Warm up time 20 seconds, FCOT 5.9 sec, FPOT 5.5 sec

DIGITAL EFFECTS: Electronic Sort, Copy Report, Machine Report, Toner Report, Auto Start, Image Rotation, 8 Job Programs, Electronic Sort, Book Erase, Sheet Erase, Margin Shift, Mixed Size Processing, Image Combination, Auto Exposure, Copy Interrupt, and ECO Print, Auto Selection for mixed sizes, Split Page Mode, 100 Management Accounts (User code, Page Limits)

MONTHLY RENTAL PRICING

| LOW VOLUME MONTHLY RENTAL | COPIES INCLUDED | EXCESS COPY CHARGE |
|---------------------------|-----------------|--------------------|
| \$65.09 | 2,000 | \$ 0.0185 |

Digital Copiers • Networked Copiers • Facsimiles • Laser Printers • Color Copiers • Wide Format Copiers • Sales • Service • Supplies

June 16, 2009

Proposal Prepared For
HIDALGO COUNTY HEAD START
ADMINISTRATION HEALTH

State of Texas Contract No. 985-A6-Photocopiers/Rental

Commodity Code 985-01-34110-5 Copier

COPYSTAR CS-1650

Digital Copier | Standard Network Print

16 Copies Per Minute
 300-Sheet Drawer
 20k Max Monthly Volume
 Surge Protector

16 Prints Per Minute
 50-Sheet Multi-Purpose Tray
 50-Sheet Reversing Processor
 Stand

FEATURES: Display Screen Interface, 600 x 600 dpi, Fast 1200 dpi, *Copy/Print/Scan*, 256 Level Grayscale, Zoom 50% - 200% in 1% increments, Preset Reduction / Enlargement Settings, and Automatic Manual, Text, Photo & Combination Exposure Control, 64 MB Memory, Warm up time 20 seconds, FCOT 5.9 sec, FPOT 5.5 sec

DIGITAL EFFECTS: Electronic Sort, Copy Report, Machine Report, Toner Report, Auto Start, Image Rotation, 8 Job Programs, Electronic Sort, Book Erase, Sheet Erase, Margin Shift, Mixed Size Processing, Image Combination, Auto Exposure, Copy Interrupt, and ECO Print, Auto Selection for mixed sizes, Split Page Mode, 100 Management Accounts (User code, Page Limits)

MONTHLY RENTAL PRICING

| LOW VOLUME MONTHLY RENTAL | COPIES INCLUDED | EXCESS COPY CHARGE |
|---------------------------|-----------------|--------------------|
| \$65.09 | 2,000 | \$ 0.0185 |



Digital Copiers • Networked Copiers • Facsimiles • Laser Printers • Color Copiers • Wide Format Copiers • Sales • Service • Supplies

June 16, 2009

Proposal Prepared For
HIDALGO COUNTY HEAD START
ADMINISTRATION PERSONEL

State of Texas Contract No. 985-A6-Photocopiers/Rental

Commodity Code 985-01-34120-4 Copier

COPYSTAR CS-1650

Digital Copier | Standard Network Print |

16 Copies Per Minute
 300-Sheet Drawer
 20k Max Monthly Volume
 Surge Protector

16 Prints Per Minute
 50-Sheet Multi-Purpose Tray
 50-Sheet Reversing Processor
 Stand

FEATURES: Display Screen Interface, 600 x 600 dpi, Fast 1200 dpi, *Copy/Print/Scan*, 256 Level Grayscale, Zoom 50% - 200% in 1% increments, Preset Reduction / Enlargement Settings, and Automatic Manual, Text, Photo & Combination Exposure Control, 64 MB Memory, Warm up time 20 seconds, FCOT 5.9 sec, FPOT 5.5 sec

DIGITAL EFFECTS: Electronic Sort, Copy Report, Machine Report, Toner Report, Auto Start, Image Rotation, 8 Job Programs, Electronic Sort, Book Erase, Sheet Erase, Margin Shift, Mixed Size Processing, Image Combination, Auto Exposure, Copy Interrupt, and ECO Print, Auto Selection for mixed sizes, Split Page Mode, 100 Management Accounts (User code, Page Limits)

MONTHLY RENTAL PRICING

| LOW VOLUME MONTHLY RENTAL | COPIES INCLUDED | EXCESS COPY CHARGE |
|---------------------------|-----------------|--------------------|
| \$78.27 | 5,000 | \$ 0.0185 |



Digital Copiers • Networked Copiers • Facsimiles • Laser Printers • Color Copiers • Wide Format Copiers • Sales • Service • Supplies

June 16, 2009

Proposal Prepared For
HIDALGO COUNTY HEAD START
ADMINISTRATION PROCUREMENT

State of Texas Contract No. 985-A6-Photocopiers/Rental

Commodity Code 985-01-34110-5 Copier

COPYSTAR CS-1650

Digital Copier | Standard Network Print

16 Copies Per Minute
 300-Sheet Drawer
 20k Max Monthly Volume
 Surge Protector

16 Prints Per Minute
 50-Sheet Multi-Purpose Tray
 50-Sheet Reversing Processor
 Stand

FEATURES: Display Screen Interface, 600 x 600 dpi, Fast 1200 dpi, *Copy/Print/Scan*, 256 Level Grayscale, Zoom 50% - 200% in 1% increments, Preset Reduction / Enlargement Settings, and Automatic Manual, Text, Photo & Combination Exposure Control, 64 MB Memory, Warm up time 20 seconds, FCOT 5.9 sec, FPOT 5.5 sec

DIGITAL EFFECTS: Electronic Sort, Copy Report, Machine Report, Toner Report, Auto Start, Image Rotation, 8 Job Programs, Electronic Sort, Book Erase, Sheet Erase, Margin Shift, Mixed Size Processing, Image Combination, Auto Exposure, Copy Interrupt, and ECO Print, Auto Selection for mixed sizes, Split Page Mode, 100 Management Accounts (User code, Page Limits)

MONTHLY RENTAL PRICING

| LOW VOLUME MONTHLY RENTAL | COPIES INCLUDED | EXCESS COPY CHARGE |
|---------------------------|-----------------|--------------------|
| \$65.09 | 2,000 | \$ 0.0185 |



Digital Copiers • Networked Copiers • Facsimiles • Laser Printers • Color Copiers • Wide Format Copiers • Sales • Service • Supplies

June 16, 2009

Proposal Prepared For
HIDALGO COUNTY HEAD START
ADMINISTRATION TRANSITION

State of Texas Contract No. 985-A6-Photocopiers/Rental

Commodity Code 985-01-34110-5 Copier

COPYSTAR CS-1650

Digital Copier | Standard Network Print

16 Copies Per Minute
300-Sheet Drawer
20k Max Monthly Volume
Surge Protector

16 Prints Per Minute
50-Sheet Multi-Purpose Tray
50-Sheet Reversing Processor
Stand

FEATURES: Display Screen Interface, 600 x 600 dpi, Fast 1200 dpi, *Copy/Print/Scan*, 256 Level Grayscale, Zoom 50% - 200% in 1% increments, Preset Reduction / Enlargement Settings, and Automatic Manual, Text, Photo & Combination Exposure Control, 64 MB Memory, Warm up time 20 seconds, FCOT 5.9 sec, FPOT 5.5 sec

DIGITAL EFFECTS: Electronic Sort, Copy Report, Machine Report, Toner Report, Auto Start, Image Rotation, 8 Job Programs, Electronic Sort, Book Erase, Sheet Erase, Margin Shift, Mixed Size Processing, Image Combination, Auto Exposure, Copy Interrupt, and ECO Print, Auto Selection for mixed sizes, Split Page Mode, 100 Management Accounts (User code, Page Limits)

MONTHLY RENTAL PRICING

| LOW VOLUME MONTHLY RENTAL | COPIES INCLUDED | EXCESS COPY CHARGE |
|---------------------------|-----------------|--------------------|
| \$65.09 | 2,000 | \$ 0.0185 |

Digital Copiers • Networked Copiers • Facsimiles • Laser Printers • Color Copiers • Wide Format Copiers • Sales • Service • Supplies

June 16, 2009

Proposal Prepared For
HIDALGO COUNTY HEAD START
ALAMO

State of Texas Contract No. 985-A6-Photocopiers/Rental

Commodity Code 985-01-34120-4 Copier

COPYSTAR CS-1650

Digital Copier | Standard Network Print |

16 Copies Per Minute
 300-Sheet Drawer
 20k Max Monthly Volume
 Surge Protector

16 Prints Per Minute
 50-Sheet Multi-Purpose Tray
 50-Sheet Reversing Processor
 Stand

FEATURES: Display Screen Interface, 600 x 600 dpi, Fast 1200 dpi, *Copy/Print/Scan*, 256 Level Grayscale, Zoom 50% - 200% in 1% increments, Preset Reduction / Enlargement Settings, and Automatic Manual, Text, Photo & Combination Exposure Control, 64 MB Memory, Warm up time 20 seconds, FCOT 5.9 sec, FPOT 5.5 sec

DIGITAL EFFECTS: Electronic Sort, Copy Report, Machine Report, Toner Report, Auto Start, Image Rotation, 8 Job Programs, Electronic Sort, Book Erase, Sheet Erase, Margin Shift, Mixed Size Processing, Image Combination, Auto Exposure, Copy Interrupt, and ECO Print, Auto Selection for mixed sizes, Split Page Mode, 100 Management Accounts (User code, Page Limits)

MONTHLY RENTAL PRICING

| LOW VOLUME MONTHLY RENTAL | COPIES INCLUDED | EXCESS COPY CHARGE |
|---------------------------|-----------------|--------------------|
| \$78.27 | 5,000 | \$ 0.0185 |



Digital Copiers • Networked Copiers • Facsimiles • Laser Printers • Color Copiers • Wide Format Copiers • Sales • Service • Supplies

June 16, 2009

Proposal Prepared For
HIDALGO COUNTY HEAD START
ALTON

State of Texas Contract No. 985-A6-Photocopiers/Rental

Commodity Code 985-01-34120-4 Copier

COPYSTAR CS-1650

Digital Copier | Standard Network Print |

16 Copies Per Minute
300-Sheet Drawer
20k Max Monthly Volume
Surge Protector

16 Prints Per Minute
50-Sheet Multi-Purpose Tray
50-Sheet Reversing Processor
Stand

FEATURES: Display Screen Interface, 600 x 600 dpi, Fast 1200 dpi, *Copy/Print/Scan*, 256 Level Grayscale, Zoom 50% - 200% in 1% increments, Preset Reduction / Enlargement Settings, and Automatic Manual, Text, Photo & Combination Exposure Control, 64 MB Memory, Warm up time 20 seconds, FCOT 5.9 sec, FPOT 5.5 sec

DIGITAL EFFECTS: Electronic Sort, Copy Report, Machine Report, Toner Report, Auto Start, Image Rotation, 8 Job Programs, Electronic Sort, Book Erase, Sheet Erase, Margin Shift, Mixed Size Processing, Image Combination, Auto Exposure, Copy Interrupt, and ECO Print, Auto Selection for mixed sizes, Split Page Mode, 100 Management Accounts (User code, Page Limits)

MONTHLY RENTAL PRICING

| LOW VOLUME MONTHLY RENTAL | COPIES INCLUDED | EXCESS COPY CHARGE |
|---------------------------|-----------------|--------------------|
| \$78.27 | 5,000 | \$ 0.0185 |

Digital Copiers • Networked Copiers • Facsimiles • Laser Printers • Color Copiers • Wide Format Copiers • Sales • Service • Supplies

June 16, 2009

Proposal Prepared For
HIDALGO COUNTY HEAD START
DONNA I

State of Texas Contract No. 985-A6-Photocopiers/Rental

Commodity Code 985-01-34120-4 Copier

COPYSTAR CS-1650

Digital Copier | Standard Network Print |

| | |
|------------------------|------------------------------|
| 16 Copies Per Minute | 16 Prints Per Minute |
| 300-Sheet Drawer | 50-Sheet Multi-Purpose Tray |
| 20k Max Monthly Volume | 50-Sheet Reversing Processor |
| Surge Protector | Stand |

FEATURES: Display Screen Interface, 600 x 600 dpi, Fast 1200 dpi, *Copy/Print/Scan*, 256 Level Grayscale, Zoom 50% - 200% in 1% increments, Preset Reduction / Enlargement Settings, and Automatic Manual, Text, Photo & Combination Exposure Control, 64 MB Memory, Warm up time 20 seconds, FCOT 5.9 sec, FPOT 5.5 sec

DIGITAL EFFECTS: Electronic Sort, Copy Report, Machine Report, Toner Report, Auto Start, Image Rotation, 8 Job Programs, Electronic Sort, Book Erase, Sheet Erase, Margin Shift, Mixed Size Processing, Image Combination, Auto Exposure, Copy Interrupt, and ECO Print, Auto Selection for mixed sizes, Split Page Mode, 100 Management Accounts (User code, Page Limits)

MONTHLY RENTAL PRICING

| LOW VOLUME MONTHLY RENTAL | COPIES INCLUDED | EXCESS COPY CHARGE |
|---------------------------|-----------------|--------------------|
| \$78.27 | 5,000 | \$ 0.0185 |



Digital Copiers • Networked Copiers • Facsimiles • Laser Printers • Color Copiers • Wide Format Copiers • Sales • Service • Supplies

June 16, 2009

Proposal Prepared For
HIDALGO COUNTY HEAD START
DONNA II

State of Texas Contract No. 985-A6-Photocopiers/Rental

Commodity Code 985-01-34110-5 Copier

COPYSTAR CS-1650

Digital Copier | Standard Network Print

16 Copies Per Minute
 300-Sheet Drawer
 20k Max Monthly Volume
 Surge Protector

16 Prints Per Minute
 50-Sheet Multi-Purpose Tray
 50-Sheet Reversing Processor
 Stand

FEATURES: Display Screen Interface, 600 x 600 dpi, Fast 1200 dpi, *Copy/Print/Scan*, 256 Level Grayscale, Zoom 50% - 200% in 1% increments, Preset Reduction / Enlargement Settings, and Automatic Manual, Text, Photo & Combination Exposure Control, 64 MB Memory, Warm up time 20 seconds, FCOT 5.9 sec, FPOT 5.5 sec

DIGITAL EFFECTS: Electronic Sort, Copy Report, Machine Report, Toner Report, Auto Start, Image Rotation, 8 Job Programs, Electronic Sort, Book Erase, Sheet Erase, Margin Shift, Mixed Size Processing, Image Combination, Auto Exposure, Copy Interrupt, and ECO Print, Auto Selection for mixed sizes, Split Page Mode, 100 Management Accounts (User code, Page Limits)

MONTHLY RENTAL PRICING

| LOW VOLUME MONTHLY RENTAL | COPIES INCLUDED | EXCESS COPY CHARGE |
|---------------------------|-----------------|--------------------|
| \$65.09 | 2,000 | \$ 0.0185 |



Digital Copiers • Networked Copiers • Facsimiles • Laser Printers • Color Copiers • Wide Format Copiers • Sales • Service • Supplies

June 16, 2009

Proposal Prepared For
HIDALGO COUNTY HEAD START
DONNA IV

State of Texas Contract No. 985-A6-Photocopiers/Rental

Commodity Code 985-01-34110-5 Copier

COPYSTAR CS-1650

Digital Copier | Standard Network Print

16 Copies Per Minute
300-Sheet Drawer
20k Max Monthly Volume
Surge Protector

16 Prints Per Minute
50-Sheet Multi-Purpose Tray
50-Sheet Reversing Processor
Stand

FEATURES: Display Screen Interface, 600 x 600 dpi, Fast 1200 dpi, *Copy/Print/Scan*, 256 Level Grayscale, Zoom 50% - 200% in 1% increments, Preset Reduction / Enlargement Settings, and Automatic Manual, Text, Photo & Combination Exposure Control, 64 MB Memory, Warm up time 20 seconds, FCOT 5.9 sec, FPOT 5.5 sec

DIGITAL EFFECTS: Electronic Sort, Copy Report, Machine Report, Toner Report, Auto Start, Image Rotation, 8 Job Programs, Electronic Sort, Book Erase, Sheet Erase, Margin Shift, Mixed Size Processing, Image Combination, Auto Exposure, Copy Interrupt, and ECO Print, Auto Selection for mixed sizes, Split Page Mode, 100 Management Accounts (User code, Page Limits)

MONTHLY RENTAL PRICING

| LOW VOLUME MONTHLY RENTAL | COPIES INCLUDED | EXCESS COPY CHARGE |
|---------------------------|-----------------|--------------------|
| \$65.09 | 2,000 | \$ 0.0185 |



Digital Copiers • Networked Copiers • Facsimiles • Laser Printers • Color Copiers • Wide Format Copiers • Sales • Service • Supplies

June 16, 2009

Proposal Prepared For
HIDALGO COUNTY HEAD START
EDCOUCH

State of Texas Contract No. 985-A6-Photocopiers/Rental

Commodity Code 985-01-34120-4 Copier

COPYSTAR CS-1650

Digital Copier | Standard Network Print |

16 Copies Per Minute
300-Sheet Drawer
20k Max Monthly Volume
Surge Protector

16 Prints Per Minute
50-Sheet Multi-Purpose Tray
50-Sheet Reversing Processor
Stand

FEATURES: Display Screen Interface, 600 x 600 dpi, Fast 1200 dpi, *Copy/Print/Scan*, 256 Level Grayscale, Zoom 50% - 200% in 1% increments, Preset Reduction / Enlargement Settings, and Automatic Manual, Text, Photo & Combination Exposure Control, 64 MB Memory, Warm up time 20 seconds, FCOT 5.9 sec, FPOT 5.5 sec

DIGITAL EFFECTS: Electronic Sort, Copy Report, Machine Report, Toner Report, Auto Start, Image Rotation, 8 Job Programs, Electronic Sort, Book Erase, Sheet Erase, Margin Shift, Mixed Size Processing, Image Combination, Auto Exposure, Copy Interrupt, and ECO Print, Auto Selection for mixed sizes, Split Page Mode, 100 Management Accounts (User code, Page Limits)

MONTHLY RENTAL PRICING

| LOW VOLUME MONTHLY RENTAL | COPIES INCLUDED | EXCESS COPY CHARGE |
|---------------------------|-----------------|--------------------|
| \$78.27 | 5,000 | \$ 0.0185 |

Digital Copiers • Networked Copiers • Facsimiles • Laser Printers • Color Copiers • Wide Format Copiers • Sales • Service • Supplies

June 16, 2009

Proposal Prepared For
HIDALGO COUNTY HEAD START
EDINBURG I

State of Texas Contract No. 985-A6-Photocopiers/Rental

Commodity Code 985-01-34110-5 Copier

COPYSTAR CS-1650

Digital Copier | Standard Network Print

16 Copies Per Minute
 300-Sheet Drawer
 20k Max Monthly Volume
 Surge Protector

16 Prints Per Minute
 50-Sheet Multi-Purpose Tray
 50-Sheet Reversing Processor
 Stand

FEATURES: Display Screen Interface, 600 x 600 dpi, Fast 1200 dpi, *Copy/Print/Scan*, 256 Level Grayscale, Zoom 50% - 200% in 1% increments, Preset Reduction / Enlargement Settings, and Automatic Manual, Text, Photo & Combination Exposure Control, 64 MB Memory, Warm up time 20 seconds, FCOT 5.9 sec, FPOT 5.5 sec

DIGITAL EFFECTS: Electronic Sort, Copy Report, Machine Report, Toner Report, Auto Start, Image Rotation, 8 Job Programs, Electronic Sort, Book Erase, Sheet Erase, Margin Shift, Mixed Size Processing, Image Combination, Auto Exposure, Copy Interrupt, and ECO Print, Auto Selection for mixed sizes, Split Page Mode, 100 Management Accounts (User code, Page Limits)

MONTHLY RENTAL PRICING

| LOW VOLUME MONTHLY RENTAL | COPIES INCLUDED | EXCESS COPY CHARGE |
|---------------------------|-----------------|--------------------|
| \$65.09 | 2,000 | \$ 0.0185 |



Digital Copiers • Networked Copiers • Facsimiles • Laser Printers • Color Copiers • Wide Format Copiers • Sales • Service • Supplies

June 16, 2009

Proposal Prepared For
HIDALGO COUNTY HEAD START
EDINBURG II

State of Texas Contract No. 985-A6-Photocopiers/Rental

Commodity Code 985-01-34110-5 Copier

COPYSTAR CS-1650

Digital Copier | Standard Network Print

16 Copies Per Minute
 300-Sheet Drawer
 20k Max Monthly Volume
 Surge Protector

16 Prints Per Minute
 50-Sheet Multi-Purpose Tray
 50-Sheet Reversing Processor
 Stand

FEATURES: Display Screen Interface, 600 x 600 dpi, Fast 1200 dpi, *Copy/Print/Scan*, 256 Level Grayscale, Zoom 50% - 200% in 1% increments, Preset Reduction / Enlargement Settings, and Automatic Manual, Text, Photo & Combination Exposure Control, 64 MB Memory, Warm up time 20 seconds, FCOT 5.9 sec, FPOT 5.5 sec

DIGITAL EFFECTS: Electronic Sort, Copy Report, Machine Report, Toner Report, Auto Start, Image Rotation, 8 Job Programs, Electronic Sort, Book Erase, Sheet Erase, Margin Shift, Mixed Size Processing, Image Combination, Auto Exposure, Copy Interrupt, and ECO Print, Auto Selection for mixed sizes, Split Page Mode, 100 Management Accounts (User code, Page Limits)

MONTHLY RENTAL PRICING

| LOW VOLUME MONTHLY RENTAL | COPIES INCLUDED | EXCESS COPY CHARGE |
|---------------------------|-----------------|--------------------|
| \$65.09 | 2,000 | \$ 0.0185 |



Digital Copiers • Networked Copiers • Facsimiles • Laser Printers • Color Copiers • Wide Format Copiers • Sales • Service • Supplies

June 16, 2009

Proposal Prepared For
HIDALGO COUNTY HEAD START
EDINBURG III

State of Texas Contract No. 985-A6-Photocopiers/Rental

Commodity Code 985-01-34110-5 Copier

COPYSTAR CS-1650

Digital Copier | Standard Network Print

16 Copies Per Minute
 300-Sheet Drawer
 20k Max Monthly Volume
 Surge Protector

16 Prints Per Minute
 50-Sheet Multi-Purpose Tray
 50-Sheet Reversing Processor
 Stand

FEATURES: Display Screen Interface, 600 x 600 dpi, Fast 1200 dpi, *Copy/Print/Scan*, 256 Level Grayscale, Zoom 50% - 200% in 1% increments, Preset Reduction / Enlargement Settings, and Automatic Manual, Text, Photo & Combination Exposure Control, 64 MB Memory, Warm up time 20 seconds, FCOT 5.9 sec, FPOT 5.5 sec

DIGITAL EFFECTS: Electronic Sort, Copy Report, Machine Report, Toner Report, Auto Start, Image Rotation, 8 Job Programs, Electronic Sort, Book Erase, Sheet Erase, Margin Shift, Mixed Size Processing, Image Combination, Auto Exposure, Copy Interrupt, and ECO Print, Auto Selection for mixed sizes, Split Page Mode, 100 Management Accounts (User code, Page Limits)

MONTHLY RENTAL PRICING

| LOW VOLUME MONTHLY RENTAL | COPIES INCLUDED | EXCESS COPY CHARGE |
|---------------------------|-----------------|--------------------|
| \$65.09 | 2,000 | \$ 0.0185 |



Digital Copiers • Networked Copiers • Facsimiles • Laser Printers • Color Copiers • Wide Format Copiers • Sales • Service • Supplies

June 16, 2009

Proposal Prepared For
HIDALGO COUNTY HEAD START
EDINBURG IV

State of Texas Contract No. 985-A6-Photocopiers/Rental

Commodity Code 985-01-34120-4 Copier

COPYSTAR CS-1650

Digital Copier | Standard Network Print |

16 Copies Per Minute
 300-Sheet Drawer
 20k Max Monthly Volume
 Surge Protector

16 Prints Per Minute
 50-Sheet Multi-Purpose Tray
 50-Sheet Reversing Processor
 Stand

FEATURES: Display Screen Interface, 600 x 600 dpi, Fast 1200 dpi, *Copy/Print/Scan*, 256 Level Grayscale, Zoom 50% - 200% in 1% increments, Preset Reduction / Enlargement Settings, and Automatic Manual, Text, Photo & Combination Exposure Control, 64 MB Memory, Warm up time 20 seconds, FCOT 5.9 sec, FPOT 5.5 sec

DIGITAL EFFECTS: Electronic Sort, Copy Report, Machine Report, Toner Report, Auto Start, Image Rotation, 8 Job Programs, Electronic Sort, Book Erase, Sheet Erase, Margin Shift, Mixed Size Processing, Image Combination, Auto Exposure, Copy Interrupt, and ECO Print, Auto Selection for mixed sizes, Split Page Mode, 100 Management Accounts (User code, Page Limits)

MONTHLY RENTAL PRICING

| LOW VOLUME MONTHLY RENTAL | COPIES INCLUDED | EXCESS COPY CHARGE |
|---------------------------|-----------------|--------------------|
| \$78.27 | 5,000 | \$ 0.0185 |

Digital Copiers • Networked Copiers • Facsimiles • Laser Printers • Color Copiers • Wide Format Copiers • Sales • Service • Supplies

June 16, 2009

Proposal Prepared For
HIDALGO COUNTY HEAD START
EDINBURG V

State of Texas Contract No. 985-A6-Photocopiers/Rental

Commodity Code 985-01-34120-4 Copier

COPYSTAR CS-1650

Digital Copier | Standard Network Print |

| | |
|------------------------|------------------------------|
| 16 Copies Per Minute | 16 Prints Per Minute |
| 300-Sheet Drawer | 50-Sheet Multi-Purpose Tray |
| 20k Max Monthly Volume | 50-Sheet Reversing Processor |
| Surge Protector | Stand |

FEATURES: Display Screen Interface, 600 x 600 dpi, Fast 1200 dpi, *Copy/Print/Scan*, 256 Level Grayscale, Zoom 50% - 200% in 1% increments, Preset Reduction / Enlargement Settings, and Automatic Manual, Text, Photo & Combination Exposure Control, 64 MB Memory, Warm up time 20 seconds, FCOT 5.9 sec, FPOT 5.5 sec

DIGITAL EFFECTS: Electronic Sort, Copy Report, Machine Report, Toner Report, Auto Start, Image Rotation, 8 Job Programs, Electronic Sort, Book Erase, Sheet Erase, Margin Shift, Mixed Size Processing, Image Combination, Auto Exposure, Copy Interrupt, and ECO Print, Auto Selection for mixed sizes, Split Page Mode, 100 Management Accounts (User code, Page Limits)

MONTHLY RENTAL PRICING

| LOW VOLUME MONTHLY RENTAL | COPIES INCLUDED | EXCESS COPY CHARGE |
|---------------------------|-----------------|--------------------|
| \$78.27 | 5,000 | \$ 0.0185 |



June 16, 2009

Proposal Prepared For
HIDALGO COUNTY HEAD START
ELSA

State of Texas Contract No. 985-A6-Photocopiers/Rental

Commodity Code 985-01-34110-5 Copier

COPYSTAR CS-1650

Digital Copier | Standard Network Print

16 Copies Per Minute
 300-Sheet Drawer
 20k Max Monthly Volume
 Surge Protector

16 Prints Per Minute
 50-Sheet Multi-Purpose Tray
 50-Sheet Reversing Processor
 Stand

FEATURES: Display Screen Interface, 600 x 600 dpi, Fast 1200 dpi, *Copy/Print/Scan*, 256 Level Grayscale, Zoom 50% - 200% in 1% increments, Preset Reduction / Enlargement Settings, and Automatic Manual, Text, Photo & Combination Exposure Control, 64 MB Memory, Warm up time 20 seconds, FCOT 5.9 sec, FPOT 5.5 sec

DIGITAL EFFECTS: Electronic Sort, Copy Report, Machine Report, Toner Report, Auto Start, Image Rotation, 8 Job Programs, Electronic Sort, Book Erase, Sheet Erase, Margin Shift, Mixed Size Processing, Image Combination, Auto Exposure, Copy Interrupt, and ECO Print, Auto Selection for mixed sizes, Split Page Mode, 100 Management Accounts (User code, Page Limits)

MONTHLY RENTAL PRICING

| LOW VOLUME MONTHLY RENTAL | COPIES INCLUDED | EXCESS COPY CHARGE |
|---------------------------|-----------------|--------------------|
| \$65.09 | 2,000 | \$ 0.0185 |



Digital Copiers • Networked Copiers • Facsimiles • Laser Printers • Color Copiers • Wide Format Copiers • Sales • Service • Supplies

June 16, 2009

Proposal Prepared For
HIDALGO COUNTY HEAD START
HIDALGO

State of Texas Contract No. 985-A6-Photocopiers/Rental

Commodity Code 985-01-34110-5 Copier

COPYSTAR CS-1650

Digital Copier | Standard Network Print

16 Copies Per Minute
 300-Sheet Drawer
 20k Max Monthly Volume
 Surge Protector

16 Prints Per Minute
 50-Sheet Multi-Purpose Tray
 50-Sheet Reversing Processor
 Stand

FEATURES: Display Screen Interface, 600 x 600 dpi, Fast 1200 dpi, *Copy/Print/Scan*, 256 Level Grayscale, Zoom 50% - 200% in 1% increments, Preset Reduction / Enlargement Settings, and Automatic Manual, Text, Photo & Combination Exposure Control, 64 MB Memory, Warm up time 20 seconds, FCOT 5.9 sec, FPOT 5.5 sec

DIGITAL EFFECTS: Electronic Sort, Copy Report, Machine Report, Toner Report, Auto Start, Image Rotation, 8 Job Programs, Electronic Sort, Book Erase, Sheet Erase, Margin Shift, Mixed Size Processing, Image Combination, Auto Exposure, Copy Interrupt, and ECO Print, Auto Selection for mixed sizes, Split Page Mode, 100 Management Accounts (User code, Page Limits)

MONTHLY RENTAL PRICING

| LOW VOLUME MONTHLY RENTAL | COPIES INCLUDED | EXCESS COPY CHARGE |
|---------------------------|-----------------|--------------------|
| \$65.09 | 2,000 | \$ 0.0185 |



Digital Copiers • Networked Copiers • Facsimiles • Laser Printers • Color Copiers • Wide Format Copiers • Sales • Service • Supplies

June 16, 2009

Proposal Prepared For
HIDALGO COUNTY HEAD START
LA HERENCIA

State of Texas Contract No. 985-A6-Photocopiers/Rental

Commodity Code 985-01-34110-5 Copier

COPYSTAR CS-1650

Digital Copier | Standard Network Print

| | |
|------------------------|------------------------------|
| 16 Copies Per Minute | 16 Prints Per Minute |
| 300-Sheet Drawer | 50-Sheet Multi-Purpose Tray |
| 20k Max Monthly Volume | 50-Sheet Reversing Processor |
| Surge Protector | Stand |

FEATURES: Display Screen Interface, 600 x 600 dpi, Fast 1200 dpi, *Copy/Print/Scan*, 256 Level Grayscale, Zoom 50% - 200% in 1% increments, Preset Reduction / Enlargement Settings, and Automatic Manual, Text, Photo & Combination Exposure Control, 64 MB Memory, Warm up time 20 seconds, FCOT 5.9 sec, FPOT 5.5 sec

DIGITAL EFFECTS: Electronic Sort, Copy Report, Machine Report, Toner Report, Auto Start, Image Rotation, 8 Job Programs, Electronic Sort, Book Erase, Sheet Erase, Margin Shift, Mixed Size Processing, Image Combination, Auto Exposure, Copy Interrupt, and ECO Print, Auto Selection for mixed sizes, Split Page Mode, 100 Management Accounts (User code, Page Limits)

MONTHLY RENTAL PRICING

| LOW VOLUME MONTHLY RENTAL | COPIES INCLUDED | EXCESS COPY CHARGE |
|---------------------------|-----------------|--------------------|
| \$65.09 | 2,000 | \$ 0.0185 |



Digital Copiers • Networked Copiers • Facsimiles • Laser Printers • Color Copiers • Wide Format Copiers • Sales • Service • Supplies

June 16, 2009

Proposal Prepared For
HIDALGO COUNTY HEAD START
LA JOYA

State of Texas Contract No. 985-A6-Photocopiers/Rental

Commodity Code 985-01-34110-5 Copier

COPYSTAR CS-1650

Digital Copier | Standard Network Print

| | |
|------------------------|------------------------------|
| 16 Copies Per Minute | 16 Prints Per Minute |
| 300-Sheet Drawer | 50-Sheet Multi-Purpose Tray |
| 20k Max Monthly Volume | 50-Sheet Reversing Processor |
| Surge Protector | Stand |

FEATURES: Display Screen Interface, 600 x 600 dpi, Fast 1200 dpi, *Copy/Print/Scan*, 256 Level Grayscale, Zoom 50% - 200% in 1% increments, Preset Reduction / Enlargement Settings, and Automatic Manual, Text, Photo & Combination Exposure Control, 64 MB Memory, Warm up time 20 seconds, FCOT 5.9 sec, FPOT 5.5 sec

DIGITAL EFFECTS: Electronic Sort, Copy Report, Machine Report, Toner Report, Auto Start, Image Rotation, 8 Job Programs, Electronic Sort, Book Erase, Sheet Erase, Margin Shift, Mixed Size Processing, Image Combination, Auto Exposure, Copy Interrupt, and ECO Print, Auto Selection for mixed sizes, Split Page Mode, 100 Management Accounts (User code, Page Limits)

MONTHLY RENTAL PRICING

| LOW VOLUME MONTHLY RENTAL | COPIES INCLUDED | EXCESS COPY CHARGE |
|---------------------------|-----------------|--------------------|
| \$65.09 | 2,000 | \$ 0.0185 |



Digital Copiers • Networked Copiers • Facsimiles • Laser Printers • Color Copiers • Wide Format Copiers • Sales • Service • Supplies

June 16, 2009

Proposal Prepared For
HIDALGO COUNTY HEAD START
LAS MILPAS I

State of Texas Contract No. 985-A6-Photocopiers/Rental

Commodity Code 985-01-34120-4 Copier

COPYSTAR CS-1650

Digital Copier | Standard Network Print |

16 Copies Per Minute
 300-Sheet Drawer
 20k Max Monthly Volume
 Surge Protector

16 Prints Per Minute
 50-Sheet Multi-Purpose Tray
 50-Sheet Reversing Processor
 Stand

FEATURES: Display Screen Interface, 600 x 600 dpi, Fast 1200 dpi, *Copy/Print/Scan*, 256 Level Grayscale, Zoom 50% - 200% in 1% increments, Preset Reduction / Enlargement Settings, and Automatic Manual, Text, Photo & Combination Exposure Control, 64 MB Memory, Warm up time 20 seconds, FCOT 5.9 sec, FPOT 5.5 sec

DIGITAL EFFECTS: Electronic Sort, Copy Report, Machine Report, Toner Report, Auto Start, Image Rotation, 8 Job Programs, Electronic Sort, Book Erase, Sheet Erase, Margin Shift, Mixed Size Processing, Image Combination, Auto Exposure, Copy Interrupt, and ECO Print, Auto Selection for mixed sizes, Split Page Mode, 100 Management Accounts (User code, Page Limits)

MONTHLY RENTAL PRICING

| LOW VOLUME MONTHLY RENTAL | COPIES INCLUDED | EXCESS COPY CHARGE |
|---------------------------|-----------------|--------------------|
| \$78.27 | 5,000 | \$ 0.0185 |

June 16, 2009

Proposal Prepared For
HIDALGO COUNTY HEAD START
LAS MILPAS II

State of Texas Contract No. 985-A6-Photocopiers/Rental

Commodity Code 985-01-34110-5 Copier

COPYSTAR CS-1650

Digital Copier | Standard Network Print

16 Copies Per Minute
300-Sheet Drawer
20k Max Monthly Volume
Surge Protector

16 Prints Per Minute
50-Sheet Multi-Purpose Tray
50-Sheet Reversing Processor
Stand

FEATURES: Display Screen Interface, 600 x 600 dpi, Fast 1200 dpi, *Copy/Print/Scan*, 256 Level Grayscale, Zoom 50% - 200% in 1% increments, Preset Reduction / Enlargement Settings, and Automatic Manual, Text, Photo & Combination Exposure Control, 64 MB Memory, Warm up time 20 seconds, FCOT 5.9 sec, FPOT 5.5 sec

DIGITAL EFFECTS: Electronic Sort, Copy Report, Machine Report, Toner Report, Auto Start, Image Rotation, 8 Job Programs, Electronic Sort, Book Erase, Sheet Erase, Margin Shift, Mixed Size Processing, Image Combination, Auto Exposure, Copy Interrupt, and ECO Print, Auto Selection for mixed sizes, Split Page Mode, 100 Management Accounts (User code, Page Limits)

MONTHLY RENTAL PRICING

| LOW VOLUME MONTHLY RENTAL | COPIES INCLUDED | EXCESS COPY CHARGE |
|---------------------------|-----------------|--------------------|
| \$65.09 | 2,000 | \$ 0.0185 |

Digital Copiers • Networked Copiers • Facsimiles • Laser Printers • Color Copiers • Wide Format Copiers • Sales • Service • Supplies

June 16, 2009

Proposal Prepared For
HIDALGO COUNTY HEAD START
McAllen II

State of Texas Contract No. 985-A6-Photocopiers/Rental

Commodity Code 985-01-34110-5 Copier

COPYSTAR CS-1650

Digital Copier | Standard Network Print

16 Copies Per Minute
 300-Sheet Drawer
 20k Max Monthly Volume
 Surge Protector

16 Prints Per Minute
 50-Sheet Multi-Purpose Tray
 50-Sheet Reversing Processor
 Stand

FEATURES: Display Screen Interface, 600 x 600 dpi, Fast 1200 dpi, *Copy/Print/Scan*, 256 Level Grayscale, Zoom 50% - 200% in 1% increments, Preset Reduction / Enlargement Settings, and Automatic Manual, Text, Photo & Combination Exposure Control, 64 MB Memory, Warm up time 20 seconds, FCOT 5.9 sec, FPOT 5.5 sec

DIGITAL EFFECTS: Electronic Sort, Copy Report, Machine Report, Toner Report, Auto Start, Image Rotation, 8 Job Programs, Electronic Sort, Book Erase, Sheet Erase, Margin Shift, Mixed Size Processing, Image Combination, Auto Exposure, Copy Interrupt, and ECO Print, Auto Selection for mixed sizes, Split Page Mode, 100 Management Accounts (User code, Page Limits)

MONTHLY RENTAL PRICING

| LOW VOLUME MONTHLY RENTAL | COPIES INCLUDED | EXCESS COPY CHARGE |
|---------------------------|-----------------|--------------------|
| \$65.09 | 2,000 | \$ 0.0185 |

Digital Copiers • Networked Copiers • Facsimiles • Laser Printers • Color Copiers • Wide Format Copiers • Sales • Service • Supplies

June 16, 2009

Proposal Prepared For
HIDALGO COUNTY HEAD START
McAllen IV

State of Texas Contract No. 985-A6-Photocopiers/Rental

Commodity Code 985-01-34110-5 Copier

COPYSTAR CS-1650

Digital Copier | Standard Network Print

16 Copies Per Minute
 300-Sheet Drawer
 20k Max Monthly Volume
 Surge Protector

16 Prints Per Minute
 50-Sheet Multi-Purpose Tray
 50-Sheet Reversing Processor
 Stand

FEATURES: Display Screen Interface, 600 x 600 dpi, Fast 1200 dpi, *Copy/Print/Scan*, 256 Level Grayscale, Zoom 50% - 200% in 1% increments, Preset Reduction / Enlargement Settings, and Automatic Manual, Text, Photo & Combination Exposure Control, 64 MB Memory, Warm up time 20 seconds, FCOT 5.9 sec, FPOT 5.5 sec

DIGITAL EFFECTS: Electronic Sort, Copy Report, Machine Report, Toner Report, Auto Start, Image Rotation, 8 Job Programs, Electronic Sort, Book Erase, Sheet Erase, Margin Shift, Mixed Size Processing, Image Combination, Auto Exposure, Copy Interrupt, and ECO Print, Auto Selection for mixed sizes, Split Page Mode, 100 Management Accounts (User code, Page Limits)

MONTHLY RENTAL PRICING

| LOW VOLUME MONTHLY RENTAL | COPIES INCLUDED | EXCESS COPY CHARGE |
|---------------------------|-----------------|--------------------|
| \$65.09 | 2,000 | \$ 0.0185 |

Digital Copiers • Networked Copiers • Facsimiles • Laser Printers • Color Copiers • Wide Format Copiers • Sales • Service • Supplies

June 16, 2009

Proposal Prepared For
HIDALGO COUNTY HEAD START
McAllen V

State of Texas Contract No. 985-A6-Photocopiers/Rental

Commodity Code 985-01-34110-5 Copier

COPYSTAR CS-1650

Digital Copier | Standard Network Print

16 Copies Per Minute
 300-Sheet Drawer
 20k Max Monthly Volume
 Surge Protector

16 Prints Per Minute
 50-Sheet Multi-Purpose Tray
 50-Sheet Reversing Processor
 Stand

FEATURES: Display Screen Interface, 600 x 600 dpi, Fast 1200 dpi, *Copy/Print/Scan*, 256 Level Grayscale, Zoom 50% - 200% in 1% increments, Preset Reduction / Enlargement Settings, and Automatic Manual, Text, Photo & Combination Exposure Control, 64 MB Memory, Warm up time 20 seconds, FCOT 5.9 sec, FPOT 5.5 sec

DIGITAL EFFECTS: Electronic Sort, Copy Report, Machine Report, Toner Report, Auto Start, Image Rotation, 8 Job Programs, Electronic Sort, Book Erase, Sheet Erase, Margin Shift, Mixed Size Processing, Image Combination, Auto Exposure, Copy Interrupt, and ECO Print, Auto Selection for mixed sizes, Split Page Mode, 100 Management Accounts (User code, Page Limits)

MONTHLY RENTAL PRICING

| LOW VOLUME MONTHLY RENTAL | COPIES INCLUDED | EXCESS COPY CHARGE |
|---------------------------|-----------------|--------------------|
| \$65.09 | 2,000 | \$ 0.0185 |



Digital Copiers • Networked Copiers • Facsimiles • Laser Printers • Color Copiers • Wide Format Copiers • Sales • Service • Supplies

June 16, 2009

Proposal Prepared For
HIDALGO COUNTY HEAD START

McAllen VI

State of Texas Contract No. 985-A6-Photocopiers/Rental

Commodity Code 985-01-34110-5 Copier

COPYSTAR CS-1650

Digital Copier | Standard Network Print

16 Copies Per Minute
 300-Sheet Drawer
 20k Max Monthly Volume
 Surge Protector

16 Prints Per Minute
 50-Sheet Multi-Purpose Tray
 50-Sheet Reversing Processor
 Stand

FEATURES: Display Screen Interface, 600 x 600 dpi, Fast 1200 dpi, *Copy/Print/Scan*, 256 Level Grayscale, Zoom 50% - 200% in 1% increments, Preset Reduction / Enlargement Settings, and Automatic Manual, Text, Photo & Combination Exposure Control, 64 MB Memory, Warm up time 20 seconds, FCOT 5.9 sec, FPOT 5.5 sec

DIGITAL EFFECTS: Electronic Sort, Copy Report, Machine Report, Toner Report, Auto Start, Image Rotation, 8 Job Programs, Electronic Sort, Book Erase, Sheet Erase, Margin Shift, Mixed Size Processing, Image Combination, Auto Exposure, Copy Interrupt, and ECO Print, Auto Selection for mixed sizes, Split Page Mode, 100 Management Accounts (User code, Page Limits)

MONTHLY RENTAL PRICING

| LOW VOLUME MONTHLY RENTAL | COPIES INCLUDED | EXCESS COPY CHARGE |
|---------------------------|-----------------|--------------------|
| \$65.09 | 2,000 | \$ 0.0185 |

Digital Copiers • Networked Copiers • Facsimiles • Laser Printers • Color Copiers • Wide Format Copiers • Sales • Service • Supplies

June 16, 2009

Proposal Prepared For
HIDALGO COUNTY HEAD START
VINE TERRANCE

State of Texas Contract No. 985-A6-Photocopiers/Rental

Commodity Code 985-01-34110-5 Copier

COPYSTAR CS-1650

Digital Copier | Standard Network Print

16 Copies Per Minute
 300-Sheet Drawer
 20k Max Monthly Volume
 Surge Protector

16 Prints Per Minute
 50-Sheet Multi-Purpose Tray
 50-Sheet Reversing Processor
 Stand

FEATURES: Display Screen Interface, 600 x 600 dpi, Fast 1200 dpi, *Copy/Print/Scan*, 256 Level Grayscale, Zoom 50% - 200% in 1% increments, Preset Reduction / Enlargement Settings, and Automatic Manual, Text, Photo & Combination Exposure Control, 64 MB Memory, Warm up time 20 seconds, FCOT 5.9 sec, FPOT 5.5 sec

DIGITAL EFFECTS: Electronic Sort, Copy Report, Machine Report, Toner Report, Auto Start, Image Rotation, 8 Job Programs, Electronic Sort, Book Erase, Sheet Erase, Margin Shift, Mixed Size Processing, Image Combination, Auto Exposure, Copy Interrupt, and ECO Print, Auto Selection for mixed sizes, Split Page Mode, 100 Management Accounts (User code, Page Limits)

MONTHLY RENTAL PRICING

| LOW VOLUME MONTHLY RENTAL | COPIES INCLUDED | EXCESS COPY CHARGE |
|---------------------------|-----------------|--------------------|
| \$65.09 | 2,000 | \$ 0.0185 |

June 16, 2009

Proposal Prepared For
HIDALGO COUNTY HEAD START
MERCEDES I

State of Texas Contract No. 985-A6-Photocopiers/Rental

Commodity Code 985-01-34120-4 Copier

COPYSTAR CS-1650

Digital Copier | Standard Network Print |

16 Copies Per Minute
300-Sheet Drawer
20k Max Monthly Volume
Surge Protector

16 Prints Per Minute
50-Sheet Multi-Purpose Tray
50-Sheet Reversing Processor
Stand

FEATURES: Display Screen Interface, 600 x 600 dpi, Fast 1200 dpi, *Copy/Print/Scan*, 256 Level Grayscale, Zoom 50% - 200% in 1% increments, Preset Reduction / Enlargement Settings, and Automatic Manual, Text, Photo & Combination Exposure Control, 64 MB Memory, Warm up time 20 seconds, FCOT 5.9 sec, FPOT 5.5 sec

DIGITAL EFFECTS: Electronic Sort, Copy Report, Machine Report, Toner Report, Auto Start, Image Rotation, 8 Job Programs, Electronic Sort, Book Erase, Sheet Erase, Margin Shift, Mixed Size Processing, Image Combination, Auto Exposure, Copy Interrupt, and ECO Print, Auto Selection for mixed sizes, Split Page Mode, 100 Management Accounts (User code, Page Limits)

MONTHLY RENTAL PRICING

| LOW VOLUME MONTHLY RENTAL | COPIES INCLUDED | EXCESS COPY CHARGE |
|---------------------------|-----------------|--------------------|
| \$78.27 | 5,000 | \$ 0.0185 |

Digital Copiers • Networked Copiers • Facsimiles • Laser Printers • Color Copiers • Wide Format Copiers • Sales • Service • Supplies

June 16, 2009

Proposal Prepared For
HIDALGO COUNTY HEAD START
MERCEDES II

State of Texas Contract No. 985-A6-Photocopiers/Rental

Commodity Code 985-01-34110-5 Copier

COPYSTAR CS-1650

Digital Copier | Standard Network Print

16 Copies Per Minute
 300-Sheet Drawer
 20k Max Monthly Volume
 Surge Protector

16 Prints Per Minute
 50-Sheet Multi-Purpose Tray
 50-Sheet Reversing Processor
 Stand

FEATURES: Display Screen Interface, 600 x 600 dpi, Fast 1200 dpi, *Copy/Print/Scan*, 256 Level Grayscale, Zoom 50% - 200% in 1% increments, Preset Reduction / Enlargement Settings, and Automatic Manual, Text, Photo & Combination Exposure Control, 64 MB Memory, Warm up time 20 seconds, FCOT 5.9 sec, FPOT 5.5 sec

DIGITAL EFFECTS: Electronic Sort, Copy Report, Machine Report, Toner Report, Auto Start, Image Rotation, 8 Job Programs, Electronic Sort, Book Erase, Sheet Erase, Margin Shift, Mixed Size Processing, Image Combination, Auto Exposure, Copy Interrupt, and ECO Print, Auto Selection for mixed sizes, Split Page Mode, 100 Management Accounts (User code, Page Limits)

MONTHLY RENTAL PRICING

| LOW VOLUME MONTHLY RENTAL | COPIES INCLUDED | EXCESS COPY CHARGE |
|---------------------------|-----------------|--------------------|
| \$65.09 | 2,000 | \$ 0.0185 |



June 16, 2009

Proposal Prepared For
HIDALGO COUNTY HEAD START
MISSION I

State of Texas Contract No. 985-A6-Photocopiers/Rental

Commodity Code 985-01-34110-5 Copier

COPYSTAR CS-1650

Digital Copier | Standard Network Print

16 Copies Per Minute
 300-Sheet Drawer
 20k Max Monthly Volume
 Surge Protector

16 Prints Per Minute
 50-Sheet Multi-Purpose Tray
 50-Sheet Reversing Processor
 Stand

FEATURES: Display Screen Interface, 600 x 600 dpi, Fast 1200 dpi, *Copy/Print/Scan*, 256 Level Grayscale, Zoom 50% - 200% in 1% increments, Preset Reduction / Enlargement Settings, and Automatic Manual, Text, Photo & Combination Exposure Control, 64 MB Memory, Warm up time 20 seconds, FCOT 5.9 sec, FPOT 5.5 sec

DIGITAL EFFECTS: Electronic Sort, Copy Report, Machine Report, Toner Report, Auto Start, Image Rotation, 8 Job Programs, Electronic Sort, Book Erase, Sheet Erase, Margin Shift, Mixed Size Processing, Image Combination, Auto Exposure, Copy Interrupt, and ECO Print, Auto Selection for mixed sizes, Split Page Mode, 100 Management Accounts (User code, Page Limits)

MONTHLY RENTAL PRICING

| LOW VOLUME MONTHLY RENTAL | COPIES INCLUDED | EXCESS COPY CHARGE |
|---------------------------|-----------------|--------------------|
| \$65.09 | 2,000 | \$ 0.0185 |



Digital Copiers • Networked Copiers • Facsimiles • Laser Printers • Color Copiers • Wide Format Copiers • Sales • Service • Supplies

June 16, 2009

Proposal Prepared For
HIDALGO COUNTY HEAD START
MISSION II

State of Texas Contract No. 985-A6-Photocopiers/Rental

Commodity Code 985-01-34120-4 Copier

COPYSTAR CS-1650

Digital Copier | Standard Network Print |

16 Copies Per Minute
300-Sheet Drawer
20k Max Monthly Volume
Surge Protector

16 Prints Per Minute
50-Sheet Multi-Purpose Tray
50-Sheet Reversing Processor
Stand

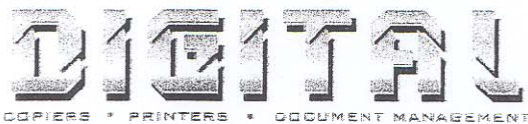
FEATURES: Display Screen Interface, 600 x 600 dpi, Fast 1200 dpi, *Copy/Print/Scan*, 256 Level Grayscale, Zoom 50% - 200% in 1% increments, Preset Reduction / Enlargement Settings, and Automatic Manual, Text, Photo & Combination Exposure Control, 64 MB Memory, Warm up time 20 seconds, FCOT 5.9 sec, FPOT 5.5 sec

DIGITAL EFFECTS: Electronic Sort, Copy Report, Machine Report, Toner Report, Auto Start, Image Rotation, 8 Job Programs, Electronic Sort, Book Erase, Sheet Erase, Margin Shift, Mixed Size Processing, Image Combination, Auto Exposure, Copy Interrupt, and ECO Print, Auto Selection for mixed sizes, Split Page Mode, 100 Management Accounts (User code, Page Limits)

MONTHLY RENTAL PRICING

| LOW VOLUME MONTHLY RENTAL | COPIES INCLUDED | EXCESS COPY CHARGE |
|---------------------------|-----------------|--------------------|
| \$78.27 | 5,000 | \$ 0.0185 |





Digital Copiers • Networked Copiers • Facsimiles • Laser Printers • Color Copiers • Wide Format Copiers • Sales • Service • Supplies

June 16, 2009

Proposal Prepared For
HIDALGO COUNTY HEAD START
MISSION III

State of Texas Contract No. 985-A6-Photocopiers/Rental

Commodity Code 985-01-34110-5 Copier

COPYSTAR CS-1650

Digital Copier | Standard Network Print

16 Copies Per Minute
300-Sheet Drawer
20k Max Monthly Volume
Surge Protector

16 Prints Per Minute
50-Sheet Multi-Purpose Tray
50-Sheet Reversing Processor
Stand

FEATURES: Display Screen Interface, 600 x 600 dpi, Fast 1200 dpi, *Copy/Print/Scan*, 256 Level Grayscale, Zoom 50% - 200% in 1% increments, Preset Reduction / Enlargement Settings, and Automatic Manual, Text, Photo & Combination Exposure Control, 64 MB Memory, Warm up time 20 seconds, FCOT 5.9 sec, FPOT 5.5 sec

DIGITAL EFFECTS: Electronic Sort, Copy Report, Machine Report, Toner Report, Auto Start, Image Rotation, 8 Job Programs, Electronic Sort, Book Erase, Sheet Erase, Margin Shift, Mixed Size Processing, Image Combination, Auto Exposure, Copy Interrupt, and ECO Print, Auto Selection for mixed sizes, Split Page Mode, 100 Management Accounts (User code, Page Limits)

MONTHLY RENTAL PRICING

| LOW VOLUME MONTHLY RENTAL | COPIES INCLUDED | EXCESS COPY CHARGE |
|---------------------------|-----------------|--------------------|
| \$65.09 | 2,000 | \$ 0.0185 |



Digital Copiers • Networked Copiers • Facsimiles • Laser Printers • Color Copiers • Wide Format Copiers • Sales • Service • Supplies

June 16, 2009

Proposal Prepared For
HIDALGO COUNTY HEAD START
MISSION IV

State of Texas Contract No. 985-A6-Photocopiers/Rental

Commodity Code 985-01-34110-5 Copier

COPYSTAR CS-1650

Digital Copier | Standard Network Print

16 Copies Per Minute
 300-Sheet Drawer
 20k Max Monthly Volume
 Surge Protector

16 Prints Per Minute
 50-Sheet Multi-Purpose Tray
 50-Sheet Reversing Processor
 Stand

FEATURES: Display Screen Interface, 600 x 600 dpi, Fast 1200 dpi, *Copy/Print/Scan*, 256 Level Grayscale, Zoom 50% - 200% in 1% increments, Preset Reduction / Enlargement Settings, and Automatic Manual, Text, Photo & Combination Exposure Control, 64 MB Memory, Warm up time 20 seconds, FCOT 5.9 sec, FPOT 5.5 sec

DIGITAL EFFECTS: Electronic Sort, Copy Report, Machine Report, Toner Report, Auto Start, Image Rotation, 8 Job Programs, Electronic Sort, Book Erase, Sheet Erase, Margin Shift, Mixed Size Processing, Image Combination, Auto Exposure, Copy Interrupt, and ECO Print, Auto Selection for mixed sizes, Split Page Mode, 100 Management Accounts (User code, Page Limits)

MONTHLY RENTAL PRICING

| LOW VOLUME MONTHLY RENTAL | COPIES INCLUDED | EXCESS COPY CHARGE |
|---------------------------|-----------------|--------------------|
| \$65.09 | 2,000 | \$ 0.0185 |



Digital Copiers • Networked Copiers • Facsimiles • Laser Printers • Color Copiers • Wide Format Copiers • Sales • Service • Supplies

June 16, 2009

Proposal Prepared For
HIDALGO COUNTY HEAD START
MONTE ALTO

State of Texas Contract No. 985-A6-Photocopiers/Rental

Commodity Code 985-01-34110-5 Copier

COPYSTAR CS-1650

Digital Copier | Standard Network Print

16 Copies Per Minute
 300-Sheet Drawer
 20k Max Monthly Volume
 Surge Protector

16 Prints Per Minute
 50-Sheet Multi-Purpose Tray
 50-Sheet Reversing Processor
 Stand

FEATURES: Display Screen Interface, 600 x 600 dpi, Fast 1200 dpi, *Copy/Print/Scan*, 256 Level Grayscale, Zoom 50% - 200% in 1% increments, Preset Reduction / Enlargement Settings, and Automatic Manual, Text, Photo & Combination Exposure Control, 64 MB Memory, Warm up time 20 seconds, FCOT 5.9 sec, FPOT 5.5 sec

DIGITAL EFFECTS: Electronic Sort, Copy Report, Machine Report, Toner Report, Auto Start, Image Rotation, 8 Job Programs, Electronic Sort, Book Erase, Sheet Erase, Margin Shift, Mixed Size Processing, Image Combination, Auto Exposure, Copy Interrupt, and ECO Print, Auto Selection for mixed sizes, Split Page Mode, 100 Management Accounts (User code, Page Limits)

MONTHLY RENTAL PRICING

| LOW VOLUME MONTHLY RENTAL | COPIES INCLUDED | EXCESS COPY CHARGE |
|---------------------------|-----------------|--------------------|
| \$65.09 | 2,000 | \$ 0.0185 |



June 16, 2009

Proposal Prepared For
HIDALGO COUNTY HEAD START
PALMVIEW I

State of Texas Contract No. 985-A6-Photocopiers/Rental

Commodity Code 985-01-34120-4 Copier

COPYSTAR CS-1650

Digital Copier | Standard Network Print |

16 Copies Per Minute
 300-Sheet Drawer
 20k Max Monthly Volume
 Surge Protector

16 Prints Per Minute
 50-Sheet Multi-Purpose Tray
 50-Sheet Reversing Processor
 Stand

FEATURES: Display Screen Interface, 600 x 600 dpi, Fast 1200 dpi, *Copy/Print/Scan*, 256 Level Grayscale, Zoom 50% - 200% in 1% increments, Preset Reduction / Enlargement Settings, and Automatic Manual, Text, Photo & Combination Exposure Control, 64 MB Memory, Warm up time 20 seconds, FCOT 5.9 sec, FPOT 5.5 sec

DIGITAL EFFECTS: Electronic Sort, Copy Report, Machine Report, Toner Report, Auto Start, Image Rotation, 8 Job Programs, Electronic Sort, Book Erase, Sheet Erase, Margin Shift, Mixed Size Processing, Image Combination, Auto Exposure, Copy Interrupt, and ECO Print, Auto Selection for mixed sizes, Split Page Mode, 100 Management Accounts (User code, Page Limits)

MONTHLY RENTAL PRICING

| LOW VOLUME MONTHLY RENTAL | COPIES INCLUDED | EXCESS COPY CHARGE |
|---------------------------|-----------------|--------------------|
| \$78.27 | 5,000 | \$ 0.0185 |



June 16, 2009

Proposal Prepared For
HIDALGO COUNTY HEAD START
PALMVIEW II

State of Texas Contract No. 985-A6-Photocopiers/Rental

Commodity Code 985-01-34120-4 Copier

COPYSTAR CS-1650

Digital Copier | Standard Network Print |

16 Copies Per Minute
300-Sheet Drawer
20k Max Monthly Volume
Surge Protector

16 Prints Per Minute
50-Sheet Multi-Purpose Tray
50-Sheet Reversing Processor
Stand

FEATURES: Display Screen Interface, 600 x 600 dpi, Fast 1200 dpi, *Copy/Print/Scan*, 256 Level Grayscale, Zoom 50% - 200% in 1% increments, Preset Reduction / Enlargement Settings, and Automatic Manual, Text, Photo & Combination Exposure Control, 64 MB Memory, Warm up time 20 seconds, FCOT 5.9 sec, FPOT 5.5 sec

DIGITAL EFFECTS: Electronic Sort, Copy Report, Machine Report, Toner Report, Auto Start, Image Rotation, 8 Job Programs, Electronic Sort, Book Erase, Sheet Erase, Margin Shift, Mixed Size Processing, Image Combination, Auto Exposure, Copy Interrupt, and ECO Print, Auto Selection for mixed sizes, Split Page Mode, 100 Management Accounts (User code, Page Limits)

MONTHLY RENTAL PRICING

| LOW VOLUME MONTHLY RENTAL | COPIES INCLUDED | EXCESS COPY CHARGE |
|---------------------------|-----------------|--------------------|
| \$78.27 | 5,000 | \$ 0.0185 |



Digital Copiers • Networked Copiers • Facsimiles • Laser Printers • Color Copiers • Wide Format Copiers • Sales • Service • Supplies

June 16, 2009

Proposal Prepared For
HIDALGO COUNTY HEAD START
PALMVIEW III

State of Texas Contract No. 985-A6-Photocopiers/Rental

Commodity Code 985-01-34110-5 Copier

COPYSTAR CS-1650

Digital Copier | Standard Network Print

16 Copies Per Minute
300-Sheet Drawer
20k Max Monthly Volume
Surge Protector

16 Prints Per Minute
50-Sheet Multi-Purpose Tray
50-Sheet Reversing Processor
Stand

FEATURES: Display Screen Interface, 600 x 600 dpi, Fast 1200 dpi, *Copy/Print/Scan*, 256 Level Grayscale, Zoom 50% - 200% in 1% increments, Preset Reduction / Enlargement Settings, and Automatic Manual, Text, Photo & Combination Exposure Control, 64 MB Memory, Warm up time 20 seconds, FCOT 5.9 sec, FPOT 5.5 sec

DIGITAL EFFECTS: Electronic Sort, Copy Report, Machine Report, Toner Report, Auto Start, Image Rotation, 8 Job Programs, Electronic Sort, Book Erase, Sheet Erase, Margin Shift, Mixed Size Processing, Image Combination, Auto Exposure, Copy Interrupt, and ECO Print, Auto Selection for mixed sizes, Split Page Mode, 100 Management Accounts (User code, Page Limits)

MONTHLY RENTAL PRICING

| LOW VOLUME MONTHLY RENTAL | COPIES INCLUDED | EXCESS COPY CHARGE |
|---------------------------|-----------------|--------------------|
| \$65.09 | 2,000 | \$ 0.0185 |



June 16, 2009

Proposal Prepared For
HIDALGO COUNTY HEAD START
PHARR

State of Texas Contract No. 985-A6-Photocopiers/Rental

Commodity Code 985-01-34120-4 Copier

COPYSTAR CS-1650

Digital Copier | Standard Network Print |

16 Copies Per Minute
 300-Sheet Drawer
 20k Max Monthly Volume
 Surge Protector

16 Prints Per Minute
 50-Sheet Multi-Purpose Tray
 50-Sheet Reversing Processor
 Stand

FEATURES: Display Screen Interface, 600 x 600 dpi, Fast 1200 dpi, *Copy/Print/Scan*, 256 Level Grayscale, Zoom 50% - 200% in 1% increments, Preset Reduction / Enlargement Settings, and Automatic Manual, Text, Photo & Combination Exposure Control, 64 MB Memory, Warm up time 20 seconds, FCOT 5.9 sec, FPOT 5.5 sec

DIGITAL EFFECTS: Electronic Sort, Copy Report, Machine Report, Toner Report, Auto Start, Image Rotation, 8 Job Programs, Electronic Sort, Book Erase, Sheet Erase, Margin Shift, Mixed Size Processing, Image Combination, Auto Exposure, Copy Interrupt, and ECO Print, Auto Selection for mixed sizes, Split Page Mode, 100 Management Accounts (User code, Page Limits)

MONTHLY RENTAL PRICING

| LOW VOLUME MONTHLY RENTAL | COPIES INCLUDED | EXCESS COPY CHARGE |
|---------------------------|-----------------|--------------------|
| \$78.27 | 5,000 | \$ 0.0185 |



Digital Copiers • Networked Copiers • Facsimiles • Laser Printers • Color Copiers • Wide Format Copiers • Sales • Service • Supplies

June 16, 2009

Proposal Prepared For
HIDALGO COUNTY HEAD START
PROGRESO

State of Texas Contract No. 985-A6-Photocopiers/Rental

Commodity Code 985-01-34110-5 Copier

COPYSTAR CS-1650

Digital Copier | Standard Network Print

16 Copies Per Minute
 300-Sheet Drawer
 20k Max Monthly Volume
 Surge Protector

16 Prints Per Minute
 50-Sheet Multi-Purpose Tray
 50-Sheet Reversing Processor
 Stand

FEATURES: Display Screen Interface, 600 x 600 dpi, Fast 1200 dpi, *Copy/Print/Scan*, 256 Level Grayscale, Zoom 50% - 200% in 1% increments, Preset Reduction / Enlargement Settings, and Automatic Manual, Text, Photo & Combination Exposure Control, 64 MB Memory, Warm up time 20 seconds, FCOT 5.9 sec, FPOT 5.5 sec

DIGITAL EFFECTS: Electronic Sort, Copy Report, Machine Report, Toner Report, Auto Start, Image Rotation, 8 Job Programs, Electronic Sort, Book Erase, Sheet Erase, Margin Shift, Mixed Size Processing, Image Combination, Auto Exposure, Copy Interrupt, and ECO Print, Auto Selection for mixed sizes, Split Page Mode, 100 Management Accounts (User code, Page Limits)

MONTHLY RENTAL PRICING

| LOW VOLUME MONTHLY RENTAL | COPIES INCLUDED | EXCESS COPY CHARGE |
|---------------------------|-----------------|--------------------|
| \$65.09 | 2,000 | \$ 0.0185 |





Digital Copiers • Networked Copiers • Facsimiles • Laser Printers • Color Copiers • Wide Format Copiers • Sales • Service • Supplies

June 16, 2009

Proposal Prepared For
HIDALGO COUNTY HEAD START
SAN CARLOS

State of Texas Contract No. 985-A6-Photocopiers/Rental

Commodity Code 985-01-34120-4 Copier

COPYSTAR CS-1650

Digital Copier | Standard Network Print |

16 Copies Per Minute
300-Sheet Drawer
20k Max Monthly Volume
Surge Protector

16 Prints Per Minute
50-Sheet Multi-Purpose Tray
50-Sheet Reversing Processor
Stand

FEATURES: Display Screen Interface, 600 x 600 dpi, Fast 1200 dpi, *Copy/Print/Scan*, 256 Level Grayscale, Zoom 50% - 200% in 1% increments, Preset Reduction / Enlargement Settings, and Automatic Manual, Text, Photo & Combination Exposure Control, 64 MB Memory, Warm up time 20 seconds, FCOT 5.9 sec, FPOT 5.5 sec

DIGITAL EFFECTS: Electronic Sort, Copy Report, Machine Report, Toner Report, Auto Start, Image Rotation, 8 Job Programs, Electronic Sort, Book Erase, Sheet Erase, Margin Shift, Mixed Size Processing, Image Combination, Auto Exposure, Copy Interrupt, and ECO Print, Auto Selection for mixed sizes, Split Page Mode, 100 Management Accounts (User code, Page Limits)

MONTHLY RENTAL PRICING

| LOW VOLUME MONTHLY RENTAL | COPIES INCLUDED | EXCESS COPY CHARGE |
|---------------------------|-----------------|--------------------|
| \$78.27 | 5,000 | \$ 0.0185 |



Digital Copiers • Networked Copiers • Facsimiles • Laser Printers • Color Copiers • Wide Format Copiers • Sales • Service • Supplies

June 16, 2009

Proposal Prepared For
HIDALGO COUNTY HEAD START
SAN JUAN I

State of Texas Contract No. 985-A6-Photocopiers/Rental

Commodity Code 985-01-34110-5 Copier

COPYSTAR CS-1650

Digital Copier | Standard Network Print

16 Copies Per Minute
300-Sheet Drawer
20k Max Monthly Volume
Surge Protector

16 Prints Per Minute
50-Sheet Multi-Purpose Tray
50-Sheet Reversing Processor
Stand

FEATURES: Display Screen Interface, 600 x 600 dpi, Fast 1200 dpi, *Copy/Print/Scan*, 256 Level Grayscale, Zoom 50% - 200% in 1% increments, Preset Reduction / Enlargement Settings, and Automatic Manual, Text, Photo & Combination Exposure Control, 64 MB Memory, Warm up time 20 seconds, FCOT 5.9 sec, FPOT 5.5 sec

DIGITAL EFFECTS: Electronic Sort, Copy Report, Machine Report, Toner Report, Auto Start, Image Rotation, 8 Job Programs, Electronic Sort, Book Erase, Sheet Erase, Margin Shift, Mixed Size Processing, Image Combination, Auto Exposure, Copy Interrupt, and ECO Print, Auto Selection for mixed sizes, Split Page Mode, 100 Management Accounts (User code, Page Limits)

MONTHLY RENTAL PRICING

| LOW VOLUME MONTHLY RENTAL | COPIES INCLUDED | EXCESS COPY CHARGE |
|---------------------------|-----------------|--------------------|
| \$65.09 | 2,000 | \$ 0.0185 |



COPIERS • PRINTERS • DOCUMENT MANAGEMENT



Digital Copiers • Networked Copiers • Facsimiles • Laser Printers • Color Copiers • Wide Format Copiers • Sales • Service • Supplies

June 16, 2009

Proposal Prepared For
HIDALGO COUNTY HEAD START
SAN JUAN II

State of Texas Contract No. 985-A6-Photocopiers/Rental

Commodity Code 985-01-34120-4 Copier

COPYSTAR CS-1650

Digital Copier | Standard Network Print |

16 Copies Per Minute
300-Sheet Drawer
20k Max Monthly Volume
Surge Protector

16 Prints Per Minute
50-Sheet Multi-Purpose Tray
50-Sheet Reversing Processor
Stand

FEATURES: Display Screen Interface, 600 x 600 dpi, Fast 1200 dpi, *Copy/Print/Scan*, 256 Level Grayscale, Zoom 50% - 200% in 1% increments, Preset Reduction / Enlargement Settings, and Automatic Manual, Text, Photo & Combination Exposure Control, 64 MB Memory, Warm up time 20 seconds, FCOT 5.9 sec, FPOT 5.5 sec

DIGITAL EFFECTS: Electronic Sort, Copy Report, Machine Report, Toner Report, Auto Start, Image Rotation, 8 Job Programs, Electronic Sort, Book Erase, Sheet Erase, Margin Shift, Mixed Size Processing, Image Combination, Auto Exposure, Copy Interrupt, and ECO Print, Auto Selection for mixed sizes, Split Page Mode, 100 Management Accounts (User code, Page Limits)

MONTHLY RENTAL PRICING

| LOW VOLUME MONTHLY RENTAL | COPIES INCLUDED | EXCESS COPY CHARGE |
|---------------------------|-----------------|--------------------|
| \$78.27 | 5,000 | \$ 0.0185 |



Digital Copiers • Networked Copiers • Facsimiles • Laser Printers • Color Copiers • Wide Format Copiers • Sales • Service • Supplies

June 16, 2009

Proposal Prepared For
HIDALGO COUNTY HEAD START
SULLIVAN CITY

State of Texas Contract No. 985-A6-Photocopiers/Rental

Commodity Code 985-01-34120-4 Copier

COPYSTAR CS-1650

Digital Copier | Standard Network Print |

| | |
|------------------------|------------------------------|
| 16 Copies Per Minute | 16 Prints Per Minute |
| 300-Sheet Drawer | 50-Sheet Multi-Purpose Tray |
| 20k Max Monthly Volume | 50-Sheet Reversing Processor |
| Surge Protector | Stand |

FEATURES: Display Screen Interface, 600 x 600 dpi, Fast 1200 dpi, *Copy/Print/Scan*, 256 Level Grayscale, Zoom 50% - 200% in 1% increments, Preset Reduction / Enlargement Settings, and Automatic Manual, Text, Photo & Combination Exposure Control, 64 MB Memory, Warm up time 20 seconds, FCOT 5.9 sec, FPOT 5.5 sec

DIGITAL EFFECTS: Electronic Sort, Copy Report, Machine Report, Toner Report, Auto Start, Image Rotation, 8 Job Programs, Electronic Sort, Book Erase, Sheet Erase, Margin Shift, Mixed Size Processing, Image Combination, Auto Exposure, Copy Interrupt, and ECO Print, Auto Selection for mixed sizes, Split Page Mode, 100 Management Accounts (User code, Page Limits)

MONTHLY RENTAL PRICING

| LOW VOLUME MONTHLY RENTAL | COPIES INCLUDED | EXCESS COPY CHARGE |
|---------------------------|-----------------|--------------------|
| \$78.27 | 5,000 | \$ 0.0185 |



Digital Copiers • Networked Copiers • Facsimiles • Laser Printers • Color Copiers • Wide Format Copiers • Sales • Service • Supplies

June 16, 2009

Proposal Prepared For
HIDALGO COUNTY HEAD START
WESLACO I

State of Texas Contract No. 985-A6-Photocopiers/Rental

Commodity Code 985-01-34120-4 Copier

COPYSTAR CS-1650

Digital Copier | Standard Network Print |

| | |
|------------------------|------------------------------|
| 16 Copies Per Minute | 16 Prints Per Minute |
| 300-Sheet Drawer | 50-Sheet Multi-Purpose Tray |
| 20k Max Monthly Volume | 50-Sheet Reversing Processor |
| Surge Protector | Stand |

FEATURES: Display Screen Interface, 600 x 600 dpi, Fast 1200 dpi, *Copy/Print/Scan*, 256 Level Grayscale, Zoom 50% - 200% in 1% increments, Preset Reduction / Enlargement Settings, and Automatic Manual, Text, Photo & Combination Exposure Control, 64 MB Memory, Warm up time 20 seconds, FCOT 5.9 sec, FPOT 5.5 sec

DIGITAL EFFECTS: Electronic Sort, Copy Report, Machine Report, Toner Report, Auto Start, Image Rotation, 8 Job Programs, Electronic Sort, Book Erase, Sheet Erase, Margin Shift, Mixed Size Processing, Image Combination, Auto Exposure, Copy Interrupt, and ECO Print, Auto Selection for mixed sizes, Split Page Mode, 100 Management Accounts (User code, Page Limits)

MONTHLY RENTAL PRICING

| LOW VOLUME MONTHLY RENTAL | COPIES INCLUDED | EXCESS COPY CHARGE |
|---------------------------|-----------------|--------------------|
| \$78.27 | 5,000 | \$ 0.0185 |



June 16, 2009

Proposal Prepared For
HIDALGO COUNTY HEAD START
WESLACO II

State of Texas Contract No. 985-A6-Photocopiers/Rental

Commodity Code 985-01-34120-4 Copier

COPYSTAR CS-1650

Digital Copier | Standard Network Print |

16 Copies Per Minute
300-Sheet Drawer
20k Max Monthly Volume
Surge Protector

16 Prints Per Minute
50-Sheet Multi-Purpose Tray
50-Sheet Reversing Processor
Stand

FEATURES: Display Screen Interface, 600 x 600 dpi, Fast 1200 dpi, *Copy/Print/Scan*, 256 Level Grayscale, Zoom 50% - 200% in 1% increments, Preset Reduction / Enlargement Settings, and Automatic Manual, Text, Photo & Combination Exposure Control, 64 MB Memory, Warm up time 20 seconds, FCOT 5.9 sec, FPOT 5.5 sec

DIGITAL EFFECTS: Electronic Sort, Copy Report, Machine Report, Toner Report, Auto Start, Image Rotation, 8 Job Programs, Electronic Sort, Book Erase, Sheet Erase, Margin Shift, Mixed Size Processing, Image Combination, Auto Exposure, Copy Interrupt, and ECO Print, Auto Selection for mixed sizes, Split Page Mode, 100 Management Accounts (User code, Page Limits)

MONTHLY RENTAL PRICING

| LOW VOLUME MONTHLY RENTAL | COPIES INCLUDED | EXCESS COPY CHARGE |
|---------------------------|-----------------|--------------------|
| \$78.27 | 5,000 | \$ 0.0185 |



Digital Copiers • Networked Copiers • Facsimiles • Laser Printers • Color Copiers • Wide Format Copiers • Sales • Service • Supplies

June 16, 2009

Proposal Prepared For
HIDALGO COUNTY HEAD START
WESLACO III

State of Texas Contract No. 985-A6-Photocopiers/Rental

Commodity Code 985-01-34120-4 Copier

COPYSTAR CS-1650

Digital Copier | Standard Network Print |

16 Copies Per Minute
300-Sheet Drawer
20k Max Monthly Volume
Surge Protector

16 Prints Per Minute
50-Sheet Multi-Purpose Tray
50-Sheet Reversing Processor
Stand

FEATURES: Display Screen Interface, 600 x 600 dpi, Fast 1200 dpi, *Copy/Print/Scan*, 256 Level Grayscale, Zoom 50% - 200% in 1% increments, Preset Reduction / Enlargement Settings, and Automatic Manual, Text, Photo & Combination Exposure Control, 64 MB Memory, Warm up time 20 seconds, FCOT 5.9 sec, FPOT 5.5 sec

DIGITAL EFFECTS: Electronic Sort, Copy Report, Machine Report, Toner Report, Auto Start, Image Rotation, 8 Job Programs, Electronic Sort, Book Erase, Sheet Erase, Margin Shift, Mixed Size Processing, Image Combination, Auto Exposure, Copy Interrupt, and ECO Print, Auto Selection for mixed sizes, Split Page Mode, 100 Management Accounts (User code, Page Limits)

MONTHLY RENTAL PRICING

| LOW VOLUME MONTHLY RENTAL | COPIES INCLUDED | EXCESS COPY CHARGE |
|---------------------------|-----------------|--------------------|
| \$78.27 | 5,000 | \$ 0.0185 |





Digital Copiers • Networked Copiers • Facsimiles • Laser Printers • Color Copiers • Wide Format Copiers • Sales • Service • Supplies

June 16, 2009

Proposal Prepared For
HIDALGO COUNTY HEAD START
WESTERN RD

State of Texas Contract No. 985-A6-Photocopiers/Rental

Commodity Code 985-01-34110-5 Copier

COPYSTAR CS-1650

Digital Copier | Standard Network Print

16 Copies Per Minute
300-Sheet Drawer
20k Max Monthly Volume
Surge Protector

16 Prints Per Minute
50-Sheet Multi-Purpose Tray
50-Sheet Reversing Processor
Stand

FEATURES: Display Screen Interface, 600 x 600 dpi, Fast 1200 dpi, *Copy/Print/Scan*, 256 Level Grayscale, Zoom 50% - 200% in 1% increments, Preset Reduction / Enlargement Settings, and Automatic Manual, Text, Photo & Combination Exposure Control, 64 MB Memory, Warm up time 20 seconds, FCOT 5.9 sec, FPOT 5.5 sec

DIGITAL EFFECTS: Electronic Sort, Copy Report, Machine Report, Toner Report, Auto Start, Image Rotation, 8 Job Programs, Electronic Sort, Book Erase, Sheet Erase, Margin Shift, Mixed Size Processing, Image Combination, Auto Exposure, Copy Interrupt, and ECO Print, Auto Selection for mixed sizes, Split Page Mode, 100 Management Accounts (User code, Page Limits)

MONTHLY RENTAL PRICING

| LOW VOLUME MONTHLY RENTAL | COPIES INCLUDED | EXCESS COPY CHARGE |
|---------------------------|-----------------|--------------------|
| \$65.09 | 2,000 | \$ 0.0185 |



Digital Copiers • Networked Copiers • Facsimiles • Laser Printers • Color Copiers • Wide Format Copiers • Sales • Service • Supplies

June 16, 2009

Proposal Prepared For

HIDALGO COUNTY HEAD START

ADMINISTRATION - NUTRITION

State of Texas Contract No. 985-A6-Photocopiers/Rental

Commodity Code 985-01-66210-4 Copier

Commodity Code 985-02-06007-6 Fax

COPYSTAR CS-3060

Digital Copier | Network Print System | Network Color Scan System | Fax system

30 Copies Per Minute
Dual 500 Sheet Drawers
1,000 Sheet S Finisher
Attachment Kit

Unlimited Duplex
50 Sheet Reversing Processor
Surge Protector

FEATURES: Display Screen Interface with Language Select, 600 x 600 dpi *Copy/Print, Scan* Fast 1200 Print Mode, 256 Level Grayscale, Zoom 25% - 400% in 1% increments, 5 Preset Reduction/Enlargement Settings, and Automatic Manual, Text, Photo & Combination Exposure Control, Auto Meter Reading by E-Mail

DIGITAL EFFECTS: Auto Magnification and Paper Select, Job Build, Job Finish Notice, Status Queue, Continuous Scan, Book Mode, Combine Image, Covers, Erase Mode, Form Overlay, Image Rotate, Image Reverse, Interrupt, 50 Job Programs, Margin Shift, Mirror Image, Page Numbering, Memo Mode, 1000 Management Codes, Auto Centering, XY Zoom, Help Guidance, Preview Image, Secure Printing, Print Job Storage, Box Printing

PRINT/COLOR SCAN FEATURES: Print 30 Pages Per Minute, 30/15 Color Scans per Minute, Shared System Memory, Scan to File/E-mail/FTP/TWAIN (Scan Soft, Paper Port), Windows® 95/98/Me/NT4.x/2000/XP/2003/Vista Compatible, Standard 10/100BaseTX, High Speed 2.0, PDF/TIFF/JPEG File Formats

NETWORK/INTERNET FAX FEATURES: Super Group 3, Transmission Speed 3 sec./page, Modem Speed 33.6 Kbps w/Auto Fallback, Multi-Send, Duplex TX/RX, Confidential TX/RX, Broadcasting, Fax Box, Dual Fax

MONTHLY RENTAL PRICING

| LOW VOLUME MONTHLY RENTAL | COPIES INCLUDED | EXCESS COPY CHARGE |
|---------------------------|-----------------|--------------------|
| \$230.21 | 10,000 | .0075 |



Digital Copiers • Networked Copiers • Facsimiles • Laser Printers • Color Copiers • Wide Format Copiers • Sales • Service • Supplies

June 16, 2009

Proposal Prepared For
HIDALGO COUNTY HEAD START
EDCOUCH KITCHEN

State of Texas Contract No. 985-A6-Photocopiers/Rental

Commodity Code 985-01-34120-4 Copier
Commodity Code 985-02-06007-6 Fax

COPYSTAR CS-1650

Digital Copier | Standard Network Print | Network Fax System

16 Copies Per Minute
300-Sheet Drawer
20k Max Monthly Volume
Surge Protector

16 Prints Per Minute
50-Sheet Multi-Purpose Tray
50-Sheet Reversing Processor
Stand

FEATURES: Display Screen Interface, 600 x 600 dpi, Fast 1200 dpi, *Copy/Print/Scan*, 256 Level Grayscale, Zoom 50% - 200% in 1% increments, Preset Reduction / Enlargement Settings, and Automatic Manual, Text, Photo & Combination Exposure Control, 64 MB Memory, Warm up time 20 seconds, FCOT 5.9 sec, FPOT 5.5 sec

DIGITAL EFFECTS: Electronic Sort, Copy Report, Machine Report, Toner Report, Auto Start, Image Rotation, 8 Job Programs, Electronic Sort, Book Erase, Sheet Erase, Margin Shift, Mixed Size Processing, Image Combination, Auto Exposure, Copy Interrupt, and ECO Print, Auto Selection for mixed sizes, Split Page Mode, 100 Management Accounts (User code, Page Limits)

FAX FEATURES: Super Group 3, Transmission Speed 3 sec./page, Modem Speed 33.6 Kbps, Data Compression JBIG, MMR, MR, MH, Memory 8MB

MONTHLY RENTAL PRICING

| LOW VOLUME MONTHLY RENTAL | COPIES INCLUDED | EXCESS COPY CHARGE |
|---------------------------|-----------------|--------------------|
| \$88.18 | 5,000 | \$ 0.0185 |

Digital Copiers • Networked Copiers • Facsimiles • Laser Printers • Color Copiers • Wide Format Copiers • Sales • Service • Supplies

June 16, 2009

Proposal Prepared For
HIDALGO COUNTY HEAD START
PALMVIEW KITCHEN

State of Texas Contract No. 985-A6-Photocopiers/Rental

Commodity Code 985-01-34120-4 Copier
Commodity Code 985-02-06007-6 Fax

COPYSTAR CS-1650

Digital Copier | Standard Network Print | Network Fax System

16 Copies Per Minute
 300-Sheet Drawer
 20k Max Monthly Volume
 Surge Protector

16 Prints Per Minute
 50-Sheet Multi-Purpose Tray
 50-Sheet Reversing Processor
 Stand

FEATURES: Display Screen Interface, 600 x 600 dpi, Fast 1200 dpi, *Copy/Print/Scan*, 256 Level Grayscale, Zoom 50% - 200% in 1% increments, Preset Reduction / Enlargement Settings, and Automatic Manual, Text, Photo & Combination Exposure Control, 64 MB Memory, Warm up time 20 seconds, FCOT 5.9 sec, FPOT 5.5 sec

DIGITAL EFFECTS: Electronic Sort, Copy Report, Machine Report, Toner Report, Auto Start, Image Rotation, 8 Job Programs, Electronic Sort, Book Erase, Sheet Erase, Margin Shift, Mixed Size Processing, Image Combination, Auto Exposure, Copy Interrupt, and ECO Print, Auto Selection for mixed sizes, Split Page Mode, 100 Management Accounts (User code, Page Limits)

FAX FEATURES: Super Group 3, Transmission Speed 3 sec./page, Modem Speed 33.6 Kbps, Data Compression JBIG, MMR, MR, MH, Memory 8MB

MONTHLY RENTAL PRICING

| LOW VOLUME MONTHLY RENTAL | COPIES INCLUDED | EXCESS COPY CHARGE |
|---------------------------|-----------------|--------------------|
| \$88.18 | 5,000 | \$ 0.0185 |



Hidalgo County Head Start

| | <i>Center</i> | | <i>Model</i> | <i>Cost</i> | <i>Allowance</i> |
|----|-----------------------|---------------------------------------|--------------|-------------|------------------|
| 1 | Admin | 1901 W Hwy 107 McAllen, TX 78504 | CS-1650 | 78.27 | 5,000 |
| 2 | Admin Family Service | 1901 W Hwy 107 McAllen, TX 78504 | CS-3060 | 210.94 | 10,000 |
| 3 | Admin-Education | 1901 W Hwy 107 McAllen, TX 78504 | CS-3060 | 210.94 | 10,000 |
| 4 | Admin Finance | 1901 W Hwy 107 McAllen, TX 78504 | CS-1650 | 78.27 | 5,000 |
| 5 | Admin Special Service | 1901 W Hwy 107 McAllen, TX | CS-1650 | 78.27 | 5,000 |
| 6 | Admin Warehouse | 1901 W Hwy 107 McAllen, TX 78504 | CS-1650 | 65.09 | 2,000 |
| 7 | Admin-Health | 1901 W Hwy 107 McAllen, TX | CS-1650 | 65.09 | 2,000 |
| 8 | Admin-Personel | 1901 W Hwy 107 McAllen, TX 78504 | CS-1650 | 78.27 | 5,000 |
| 9 | Admin-Procurement | 1901 W Hwy 107 McAllen, TX 78504 | CS-1650 | 65.09 | 2,000 |
| 10 | Admin-Transition | 1901 W Hwy 107 McAllen, TX 78504 | CS-1650 | 65.09 | 2,000 |
| 11 | Alamo | 303 S. 7TH Alamo, TX | CS-1650 | 78.27 | 5,000 |
| 12 | Alton | 202 W. Dawes Dr. Alton, TX | CS-1650 | 78.27 | 5,000 |
| 13 | Donna I | 1402 Silver Ave Donna, TX | CS-1650 | 78.27 | 5,000 |
| 14 | Donna II | 1715 Miller Ave Donna, TX | CS-1650 | 65.09 | 2,000 |
| 15 | Donna IV | 202 West South Ave Donna, TX | CS-1650 | 65.09 | 2,000 |
| 16 | Edcouch | W Hwy 107 & Mile 4 North Edcouch, TX | CS-1650 | 78.27 | 5,000 |
| 17 | Edinburg I | 225 S 25th Street Edinburg, TX | CS-1650 | 65.09 | 2,000 |
| 18 | Edinburg II | 1200 N 1st Street Edinburg, TX | CS-1650 | 65.09 | 2,000 |
| 19 | Edinburg III | 3817 S I Road Edinburg, TX | CS-1650 | 65.09 | 2,000 |
| 20 | Edinburg IV | 3215 Richardson Road Edinburg, TX | CS-1650 | 78.27 | 5,000 |
| 21 | Edinburg V | 3500 E FM 2812 Edinburg, TX | CS-1650 | 78.27 | 5,000 |
| 22 | Elsa | 700 Northwest Hidalgo Elsa, TX | CS-1650 | 65.09 | 2,000 |
| 23 | Hidalgo | 621 S 5th Street Hidalgo, TX | CS-1650 | 65.09 | 2,000 |
| 24 | La Herencia | RR 3 Box 3059 Mercedes, TX | CS-1650 | 65.09 | 2,000 |
| 25 | La Joya | 105 E 5th & Leo Ave La Joya, TX | CS-1650 | 65.09 | 2,000 |
| 26 | Las Milpas I | 714 Zapata Ave Pharr, TX 78577 | CS-1650 | 78.27 | 5,000 |
| 27 | Las Milpas II | 901 E Thomas Pharr, TX 78577 | CS-1650 | 65.09 | 2,000 |
| 28 | McAllen II | 1101 S. 16th Street McAllen, TX | CS-1650 | 65.09 | 2,000 |
| 29 | McAllen IV | 3900 W Ware Road McAllen, TX | CS-1650 | 65.09 | 2,000 |
| 30 | McAllen V | 1200 N25th Street McAllen, TX | CS-1650 | 65.09 | 2,000 |
| 31 | McAllen VI | 2601 Sarah Ave McAllen, TX | CS-1650 | 65.09 | 2,000 |
| 32 | VineTerrance | 2220-B N. 27th Street McAllen, TX | CS-1650 | 65.09 | 2,000 |
| 33 | Mercedes I | 1100 W Expwy 83 Mercedes, TX | CS-1650 | 78.27 | 5,000 |
| 34 | Mercedes II | 3601 E Mile 8 North Mercedes, TX | CS-1650 | 65.09 | 2,000 |
| 35 | Mission I | 115 Mayberry Mission, TX 78572 | CS-1650 | 65.09 | 2,000 |
| 36 | Mission II | 1105 E 8th Street Mission, TX 78572 | CS-1650 | 78.27 | 5,000 |
| 37 | Mission III | 3401 N Mayberry Mission, TX 78572 | CS-1650 | 65.09 | 2,000 |
| 38 | Mission IV | 301 South Inspiration Rd Mission, TX | CS-1650 | 65.09 | 2,000 |
| 39 | Monte Alto | Rt 15 Elizabeth & 1st Monte Alto TX | CS-1650 | 65.09 | 2,000 |
| 40 | Palmview I | 501 Commercial Blvd, Palmview, TX | CS-1650 | 78.27 | 5,000 |
| 41 | Palmview II | 618 Breyfogle Mission, TX | CS-1650 | 78.27 | 5,000 |
| 42 | Palmview III | 1208 Paula Street, Mission, TX | CS-1650 | 65.09 | 2,000 |
| 43 | Pharr | 415 E Clark, Pharr, TX 78577 | CS-1650 | 78.27 | 5,000 |
| 44 | Progreso | 109 W. Palm, Progreso, TX | CS-1650 | 65.09 | 2,000 |
| 45 | San Carlos | 134 N. 86, San Carlos, TX | CS-1650 | 78.27 | 5,000 |
| 46 | San Juan I | 200 N Cougar, San Juan, TX | CS-1650 | 65.09 | 2,000 |
| 47 | San Juan II | 601 Earling, San Juan, TX | CS-1650 | 78.27 | 5,000 |
| 48 | Sullivan City | Highway 83 Sullivan City, TX | CS-1650 | 78.27 | 5,000 |
| 49 | Weslaco I | 310 N Kansas Street, Weslaco, TX | CS-1650 | 78.27 | 5,000 |
| 50 | Weslaco II | 3030 N. Texas Weslaco, TX | CS-1650 | 78.27 | 5,000 |
| 51 | Weslaco III | 1317 W. Exwy 83 Weslaco, TX | CS-1650 | 78.27 | 5,000 |
| 52 | Western Rd | Corner Of Western Road/FM Mission, TX | CS-1650 | 65.09 | 2,000 |
| 53 | Admin-Nutrition | 1901 W Hwy 107 McAllen, TX 78504 | CS-3060 | 230.21 | 10,000 |
| 54 | Edcouch Kitchen | W Hwy 107 & mile 4 North Edcouch, TX | CS-1650 | 88.18 | 5,000 |
| 55 | Palmview Kitchen | 400 W 13th Mission, TX 78572 | CS-1650 | 88.18 | 5,000 |

Total Monthly Lease Amount:

\$ 4,372.91

• Contract Vendor List

• Contract Vendor List 985-A6 09/2005 THRU 08/2009
 • 03779 1-95-281-9506-801
 • KYOCERA MITA AMERICA, INC.
 • 225 SAND ROAD
 • FAIRFIELD NJ 07004
 • DAN WOOLLY
 • Phone 409-751-6214
 • Fax 409-751-6215
 • e-mail DAN WOOLLY@KYOCERAMITA.COM

Vendor Number: 03779 KYOCERA MITA AMERICA, INC.

• 985-01-66200-5 EA BRAND: KYOCERA/COPYSTAR MODEL: KM/CS-3035, .00
 • SUB: KM/CS-3060 DESCRIPTION: 30 CPM DIGITAL
 • COPIER/SRDF-2 DOCUMENT FEEDER/PF-70 2 X 500
 • SHEET PAPER TRAYS/PRINT SCAN SYSTEM U/DF-73
 • 1000 SHEET FINISHER/AK-71C ATTACHMENT KIT/
 • SURGE PROTECTOR -ENVIRONMENTALLY FRIENDLY -
 • FIRST CHOICE
 •
 • 985-01-66210-4 MO MONTHLY RENTAL RATE (INCLUDES INSTALLATION, 210.94
 • REMOVAL AND SUPPLIES) INCLUDES 10,000 COPIES/
 • MO; ALL ADDITIONAL COPIES AT \$.0075 EA.
 • -ENVIRONMENTALLY FRIENDLY - FIRST CHOICE
 •
 • **ACCESSORIES FOR KYOCERA MODELS KM/CS-2540/2560/3040/3060**
 • 985-02-14007-6 MO FAX SYSTEM (NETWORK FAX) - FAX SYSTEM M - KM/ 19.27
 • CS 2560/3060

Vendor Number: 03779 KYOCERA MITA AMERICA, INC.

• 985-01-34100-6 EA BRAND: KYOCERA/COPYSTAR MODEL: KM/CS-1650 .00
 • DESCRIPTION: 16 C.P.M. DIGITAL COPIER/DP-410
 • DOCUMENT FEEDER/2 SPACES/STAND/SURGE
 • PROTECTOR -ENVIRONMENTALLY FRIENDLY - FIRST
 • CHOICE
 •
 • 985-01-34110-5 MO MONTHLY RENTAL RATE (INCLUDES INSTALLATION, 65.09
 • REMOVAL AND SUPPLIES) INCLUDES 2,000 COPIES/
 • MO; ALL ADDITIONAL COPIES AT \$.0185 EA.
 • -ENVIRONMENTALLY FRIENDLY - FIRST CHOICE
 • 985-01-34120-4 MO MONTHLY RENTAL RATE (INCLUDES INSTALLATION, 78.27
 • REMOVAL AND SUPPLIES) INCLUDES 5,000 COPIES/
 • MO; ALL ADDITIONAL COPIES AT \$.0185 EA.
 • -ENVIRONMENTALLY FRIENDLY - FIRST CHOICE

• **ACCESSORIES FOR MODELS KM/CS-1650/2050/2550**

• 985-02-06007-6 MO FAX & NETWORK FAX - #FAX SYSTEM L 9.91
 • -ENVIRONMENTALLY FRIENDLY - FIRST CHOICE

State of Texas Contract No. 985-A6-Photocopiers/Rental

MONTHLY RENTAL PRICING

| CONFIG./ CLASS | COMMODITY CODE | MODEL AND ACCESSORIES | DESCRIPTION | LOW VOLUME MONTHLY RENTAL | COPIES INCLUDED | EXCESS COPY CHARGE |
|-------------------|-------------------|---|---|---------------------------------|--------------------|--------------------------|
| 6B | 985-01-34110-5 | KM/CS-1650/DP-410 /2 Spacers/Stand /Surge Protector | 16 C.P.M. Digital Copier with standard 300 sheet paper drawer/Reversing Doc Feeder/ 2 Spacers/ Stand/ Surge Protector | \$ 65.09 | 2,000 | \$ 0.0185 |

| CONFIG./ CLASS | COMMODITY CODE | MODEL AND ACCESSORIES | DESCRIPTION | HIGH VOLUME MONTHLY RENTAL | COPIES INCLUDED | EXCESS COPY CHARGE |
|-------------------|-------------------|---|---|----------------------------------|--------------------|--------------------------|
| 6B | 985-01-34120-4 | KM/CS-1650/DP-410 /2 Spacers/Stand /Surge Protector | 16 C.P.M. Digital Copier with standard 300 sheet paper drawer/Reversing Doc Feeder/ 2 Spacers/ Stand/ Surge Protector | \$ 78.27 | 5,000 | \$ 0.0185 |

Available in both low and high volume plans.

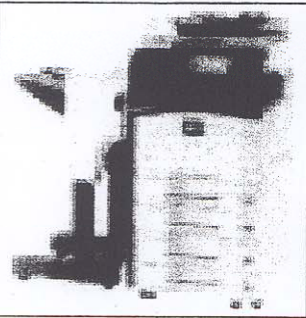
KM/CS-1650

- Speed: 16 cpm/ppm
- Functions: Print Scan Copy Fax
- Resolution: 600 x 600 dpi

| COMMODITY CODE | ADDITIONAL ACCESSORIES AVAILABLE (if <i>not</i> included in configuration/class) | LOW/ HIGH VOL. |
|----------------|---|-------------------|
| 985-02-06001-9 | DP-410 Reversing Document Feeder | 11.48 |
| 985-02-06002-7 | DU-410 Duplex Unit | 6.61 |
| 985-02-06003-5 | DF-410 Internal Finisher (can not be combined with job separator) | 16.43 |
| 985-02-06004-3 | PF-410 300 Sheet Drawer (up to 3 additional drawers or spacers can be added) | 5.29 |
| 985-02-06005-0 | JS-410 Job Separator (can not be combined with internal finisher) | 3.14 |
| 985-02-06006-8 | Scan System F Network Scanner | 9.91 |
| 985-02-06007-6 | Fax System L Fax & Network Fax | 9.91 |
| 985-02-06008-4 | MM-13-32 32MB Fax Memory Board | 5.01 |
| 985-02-06009-2 | IB-23 Secure Network Interface | 7.68 |
| 985-02-06010-0 | Original Holder Platen Cover | 1.96 |
| 985-02-06011-8 | Copier Stand Copier Stand | 2.83 |
| 985-02-06012-6 | Stand Spacer Stand Spacer (up to 3 additional drawers or spacers can be added) | 1.01 |
| 985-02-06013-4 | SD-100-16A 16 MB Memory Upgrade - 100 Pin DIMM | 0.55 |
| 985-02-06014-2 | SD-100-32A 32 MB Memory Upgrade - 100 Pin DIMM | 0.70 |
| 985-02-06015-9 | SD-100-64A 64 MB Memory Upgrade - 100 Pin DIMM | 1.09 |
| 985-02-06016-7 | SD-100-128A 128 MB Memory Upgrade - 100 Pin DIMM | 1.67 |
| 985-02-06017-5 | SD-100-256A 256 MB Memory Upgrade - 100 Pin DIMM | 2.07 |

NOTE: Monthly rental price includes equipment, service and supplies.

State of Texas Contract No. 985-A6-Photocopiers/Rental

| | | | | MONTHLY RENTAL PRICING | | | |
|---|-------------------|--------------------------|--|---|--------------------|---------------------------|--------|
| CONFIG./ CLASS | COMMODITY CODE | MODEL AND ACCESSORIES | DESCRIPTION | LOW VOLUME MONTHLY RENTAL | COPIES INCLUDED | EXCESS COPY CHARGE | |
|  | 10E | 985-01-66210-4 | KM/CS-3060/ DP-670/PF-670 DF-730/AK-670/ Surge Protector | 30 C.P.M. Digital Copier with duplexing/ Document Processor (RADF)/Dual 500 Sheet Drawer 1000 Sheet Finisher/ DF-730 Attachment Kit/ Surge Protector | 210.94 | 10,000 | 0.0075 |
| | 10E | 985-01-66220-3 | KM/CS-3060/ DP-670/PF-670 DF-730/AK-670/ Surge Protector | 30 C.P.M. Digital Copier with duplexing/ Document Processor (RADF)/Dual 500 Sheet Drawer 1000 Sheet Finisher/ DF-730 Attachment Kit/ Surge Protector | 275.35 | 25,000 | 0.0075 |
| | | COMMODITY CODE | ADDITIONAL ACCESSORIES AVAILABLE (if not included in configuration/class) | | | LOW/ HIGH VOL. | |
| | | 985-02-06007-6 | Fax System M | | | 19.27 | |
| | | 985-02-14011-8 | Data Sec. Kit (C) | | | 6.67 | |
| | | 985-02-14012-6 | UG-30 | | | 9.21 | |
| | | 985-02-14013-4 | BU-10 | | | 3.59 | |
| | | 985-02-14025-8 | SD-100-512B | 512 MB Memory Upgrade - 100 Pin DIMM | | 4.56 | |

Available in both low and high volume plans.

KM/CS-3060

- Speed: 30 cpm/ppm
- Standard Duplexing
- Resolution: 600 x 600 dpi

NOTE: Monthly rental price includes equipment, service and supplies.