



County Executive Office

2818 S. Bus. Hwy. 281 • Edinburg, Texas 78539 • Phone: (956) 292-7025 • Fax: (956) 292-7034 • www.co.hidalgo.tx.us/budget

To: Dr. Oscar Cortes

From: Valde Guerra, Court Executive Officer

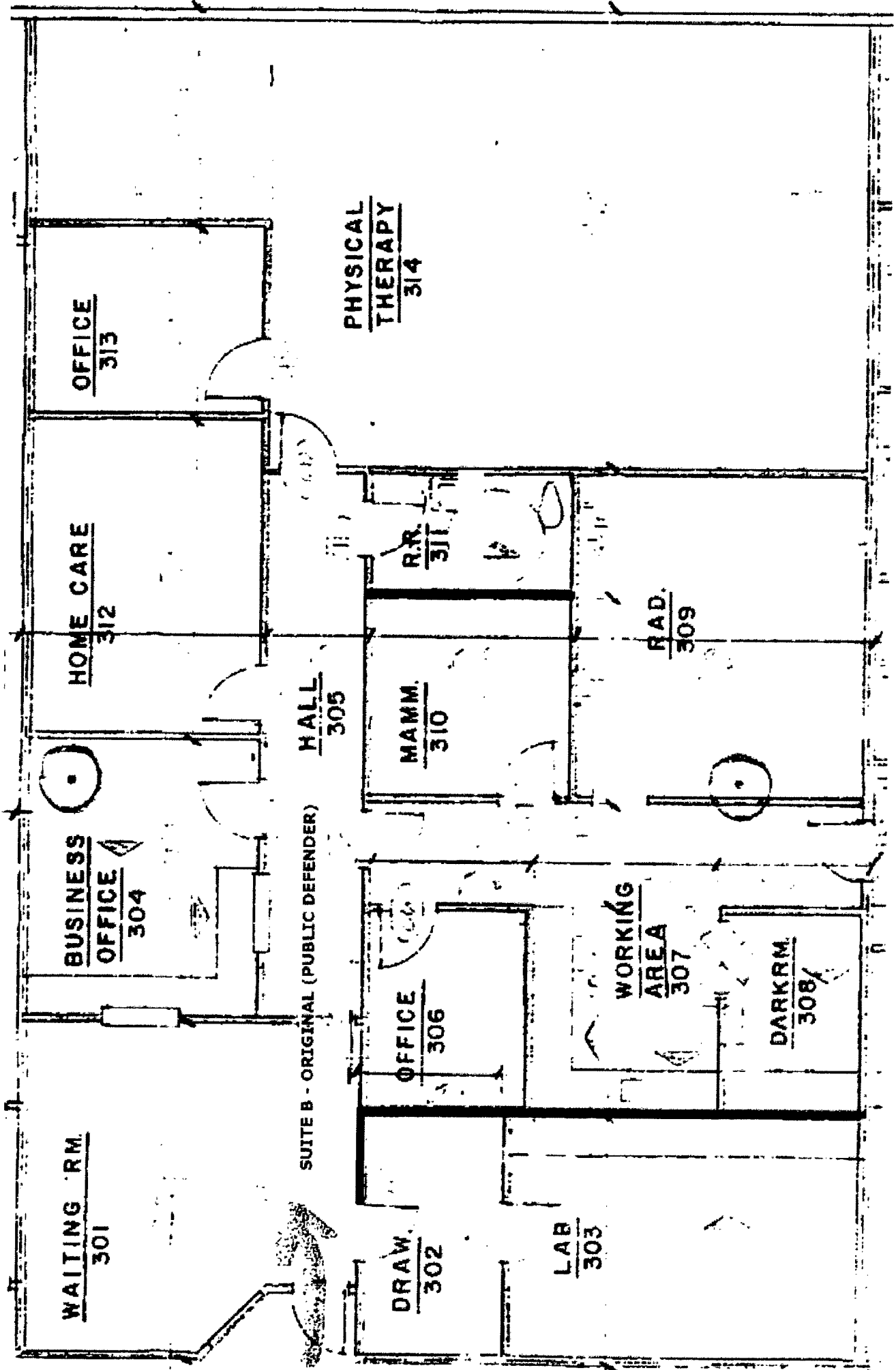
Date: Wednesday, August 19, 2009

Subject: Mediplex Building - Department Modification Requests

Attached, please find the modification requests for Suites B, C, D&E, F, G, H, and J of the Mediplex Office Building.

We are requesting a projected timeline for the completion of these modifications. Should you have any questions, please do not hesitate to contact Karina Cardoza at my office at 956.292.7608.

SUITE B
PUBLIC DEFENDER'S OFFICE



WAITING RM.
301

BUSINESS OFFICE
304

HOME CARE
312

OFFICE
313

SUITE B - ORIGINAL (PUBLIC DEFENDER)

HALL
305

DRAW.
302

OFFICE
306

MAMM.
310

R.R.
311

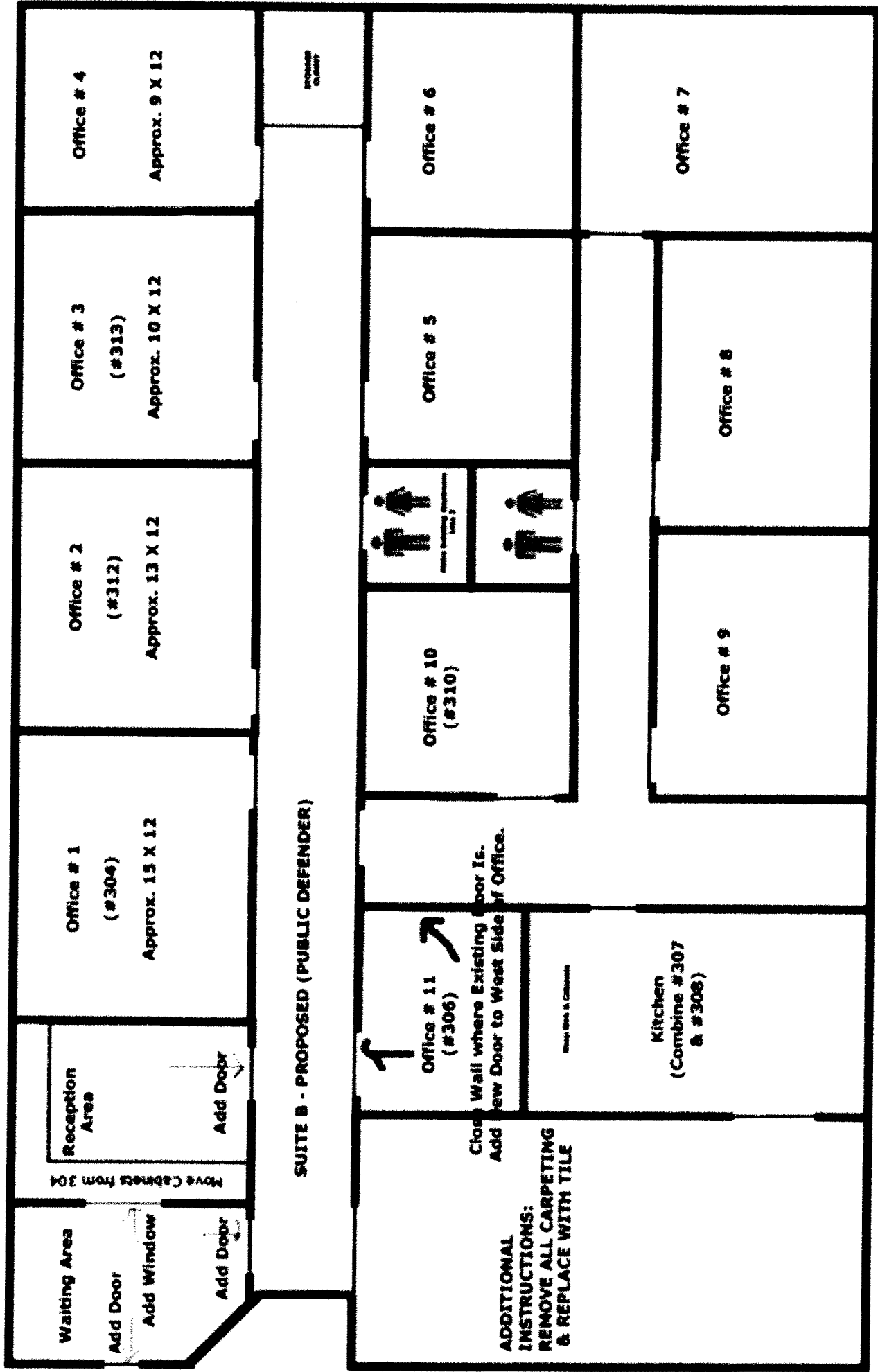
PHYSICAL THERAPY
314

LAB
303

WORKING AREA
307

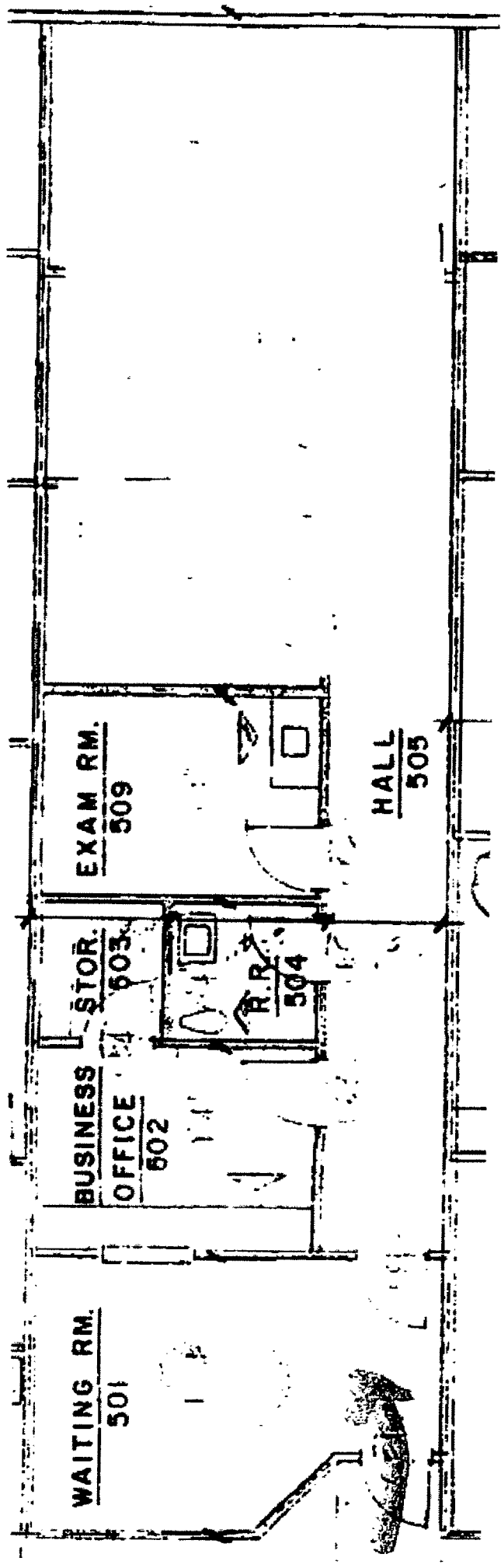
DARKRM.
308

RAD.
309

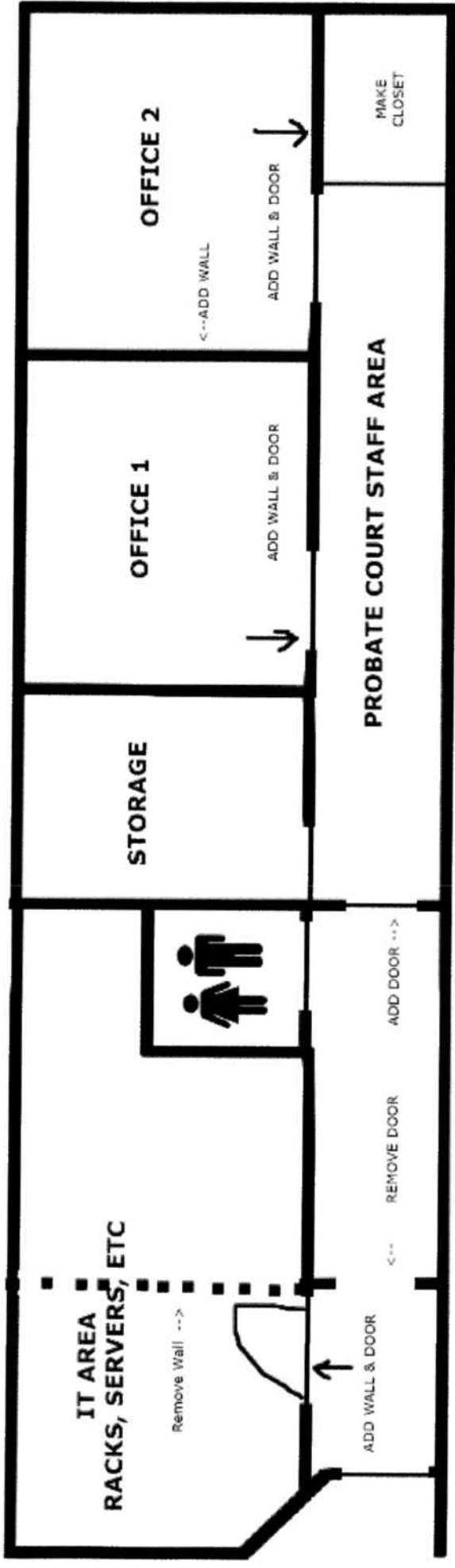


**SUITE C
PROBATE COURT STAFF
AND
IT AREA**

SUITE C - ORIGINAL (PROBATE COURT STAFF & IT AREA)

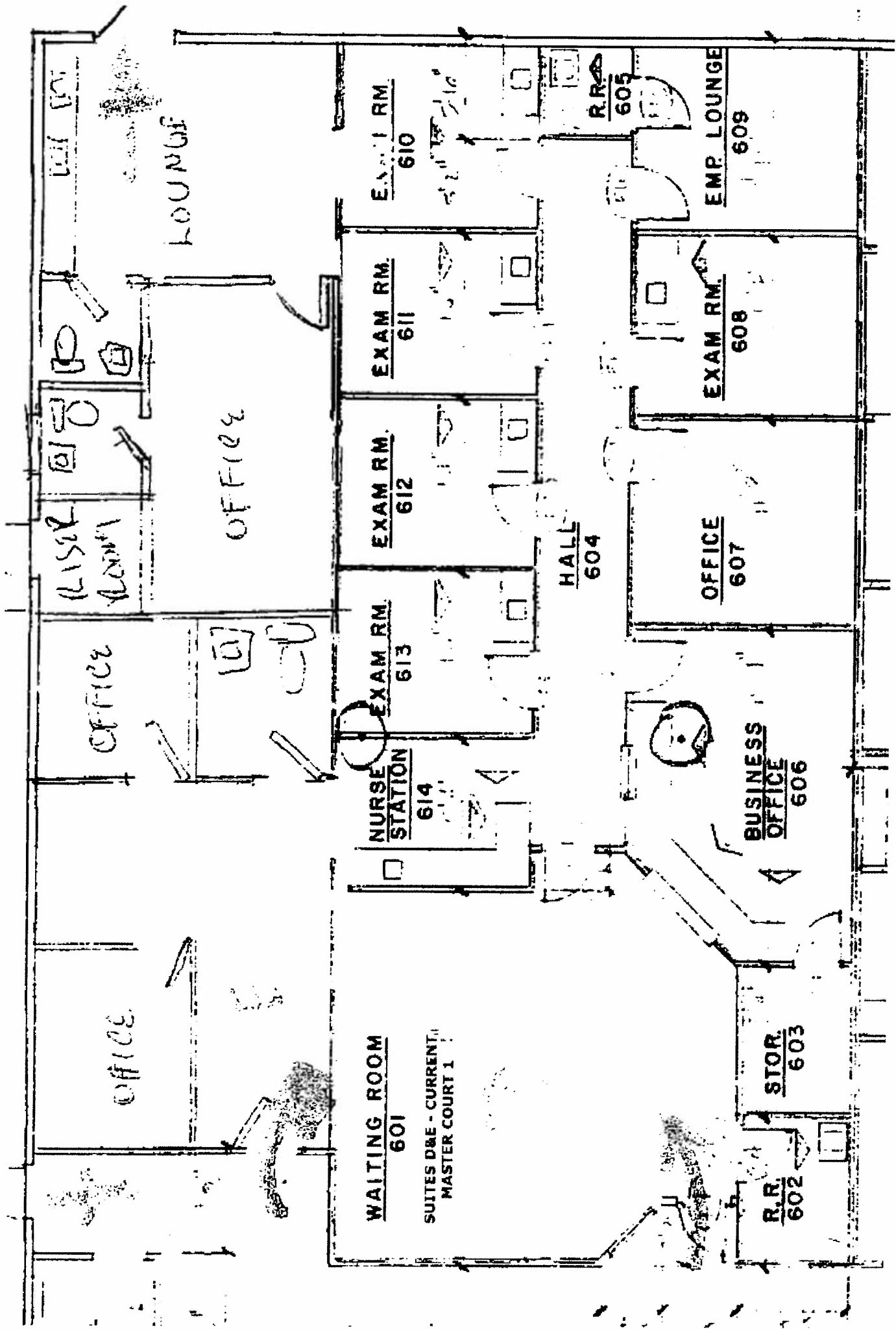


SUITE C - PROPOSED (PROBATE COURT STAFF & IT AREA)



ADDITIONAL INSTRUCTIONS:
REMOVE CARPETING & REPLACE WITH TILE
LEAVE SINK & CABINETS IN 509

**SUITES D&E
MASTER COURT 1
AND
DISTRICT CLERK AREA**



RECEPTION

LOUNGE

RECEPTION

OFFICE

OFFICE

OFFICE

WAITING ROOM
601

SUITES D&E - CURRENT,
MASTER COURT 1

NURSE
STATION
614

EXAM RM.
613

EXAM RM.
612

EXAM RM.
611

EXAM RM.
610

HALL
604

R.R.
602

STOR.
603

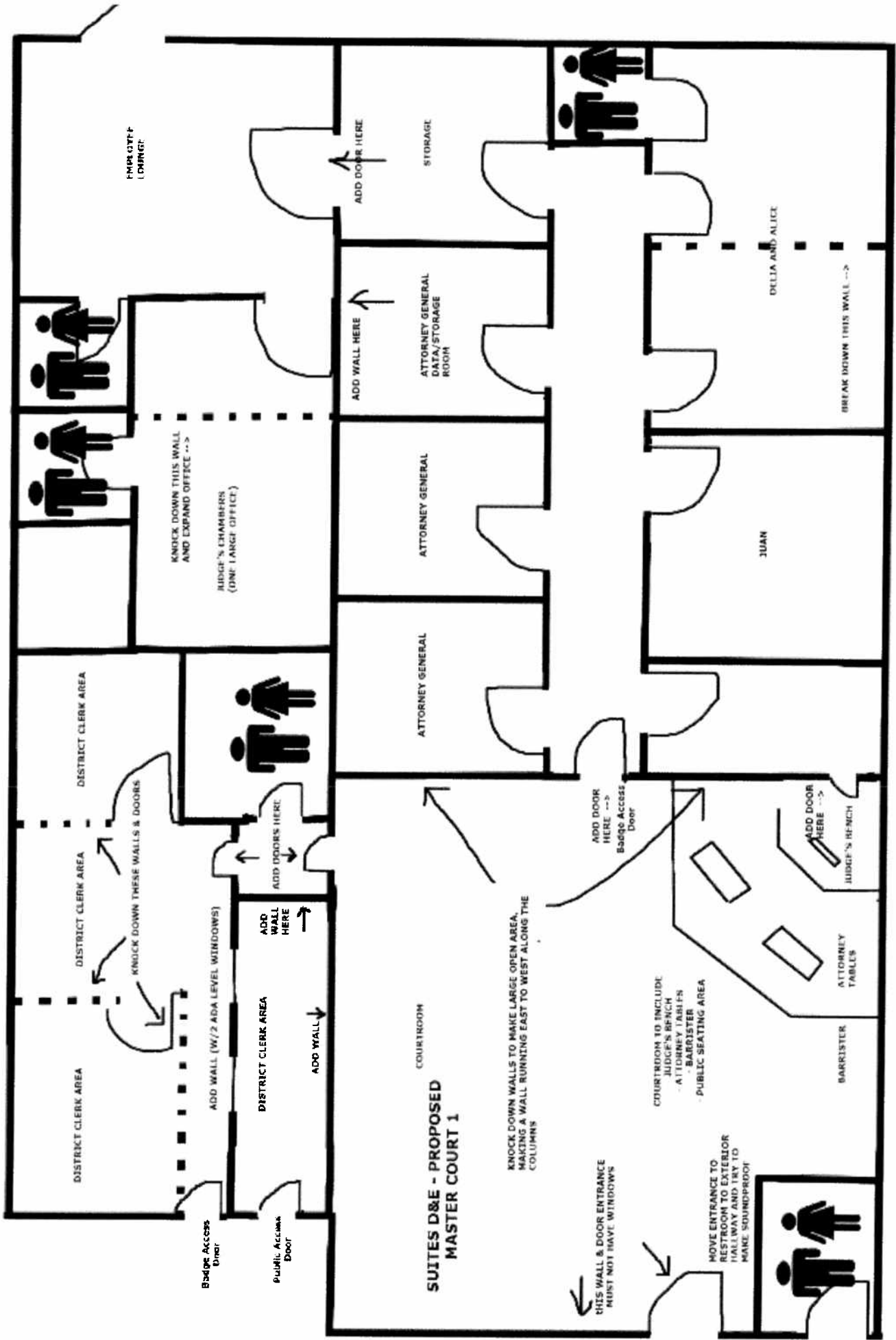
BUSINESS
OFFICE
606

OFFICE
607

EXAM RM.
608

EMP LOUNGE
609

R.R.
605



**SUITES D&E - PROPOSED
MASTER COURT 1**

DISTRICT CLERK AREA

DISTRICT CLERK AREA

DISTRICT CLERK AREA

KNOCK DOWN THESE WALLS & DOORS

ADD WALL (w/ 2 ADA LEVEL WINDOWS)

DISTRICT CLERK AREA

ADD WALL HERE

ADD DOORS HERE

KNOCK DOWN THIS WALL AND EXPAND OFFICE -->

JUDGE'S CHAMBERS (DING LANGE OFFICE)

ADD WALL HERE

ATTORNEY GENERAL

ATTORNEY GENERAL DATA/STORAGE ROOM

STORAGE

KNOCK DOWN WALLS TO MAKE LARGE OPEN AREA. MAKING A WALL RUNNING EAST TO WEST ALONG THE COLUMNS

THIS WALL & DOOR ENTRANCE MUST NOT HAVE WINDOWS

ADD DOOR HERE --> Badge Access Door

COURTROOM TO INCLUDE JUDGE'S BENCH - ATTORNEY TABLES - BARRISTER - PUBLIC SEATING AREA

MOVE ENTRANCE TO RESTROOM TO EXTERIOR (HALLWAY AND TRY TO MAKE SOUNDPROOF)

JUAN

DELLIA AND ALICE

BARRISTER

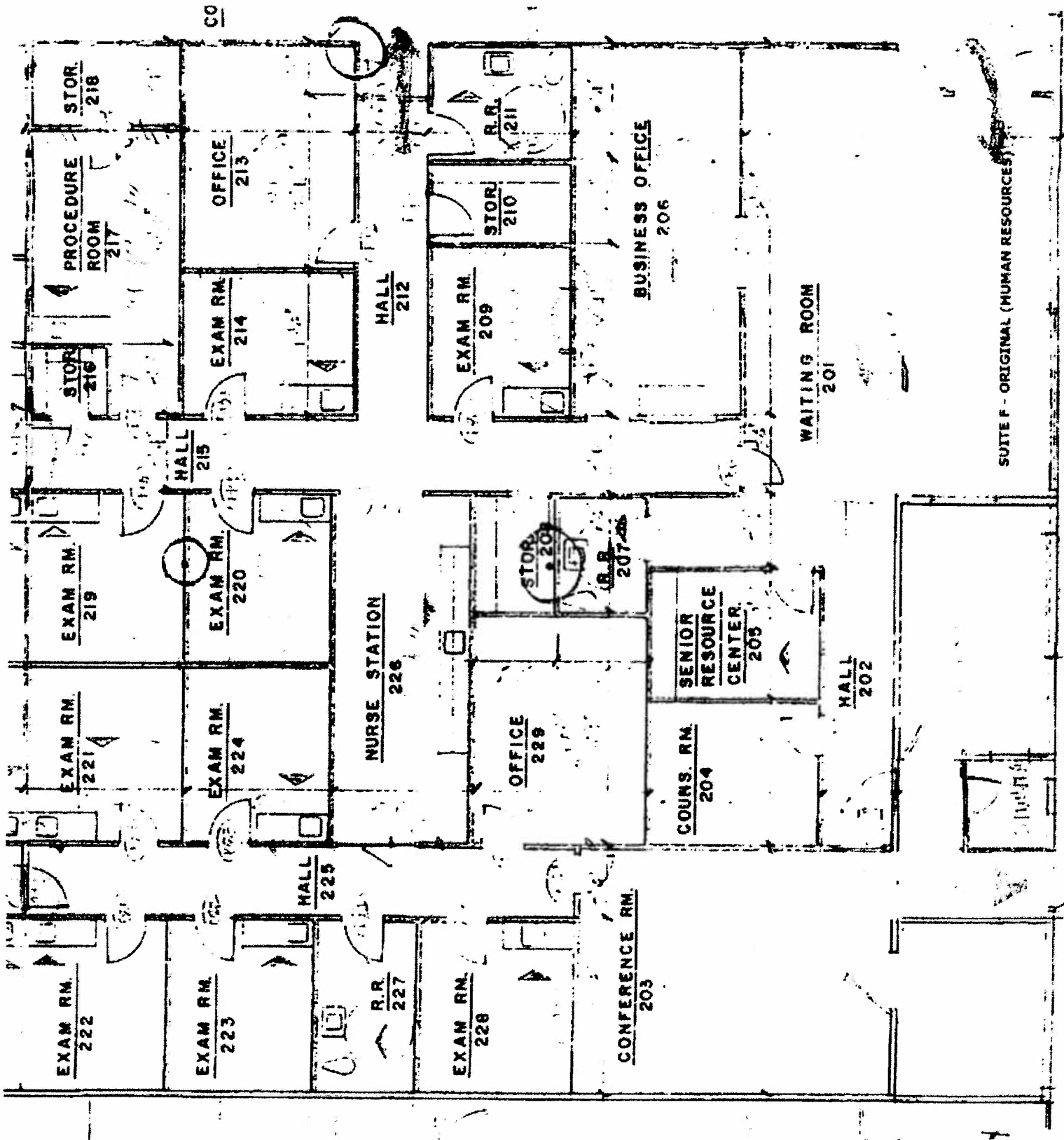
ATTORNEY TABLES

JUDGE'S BENCH

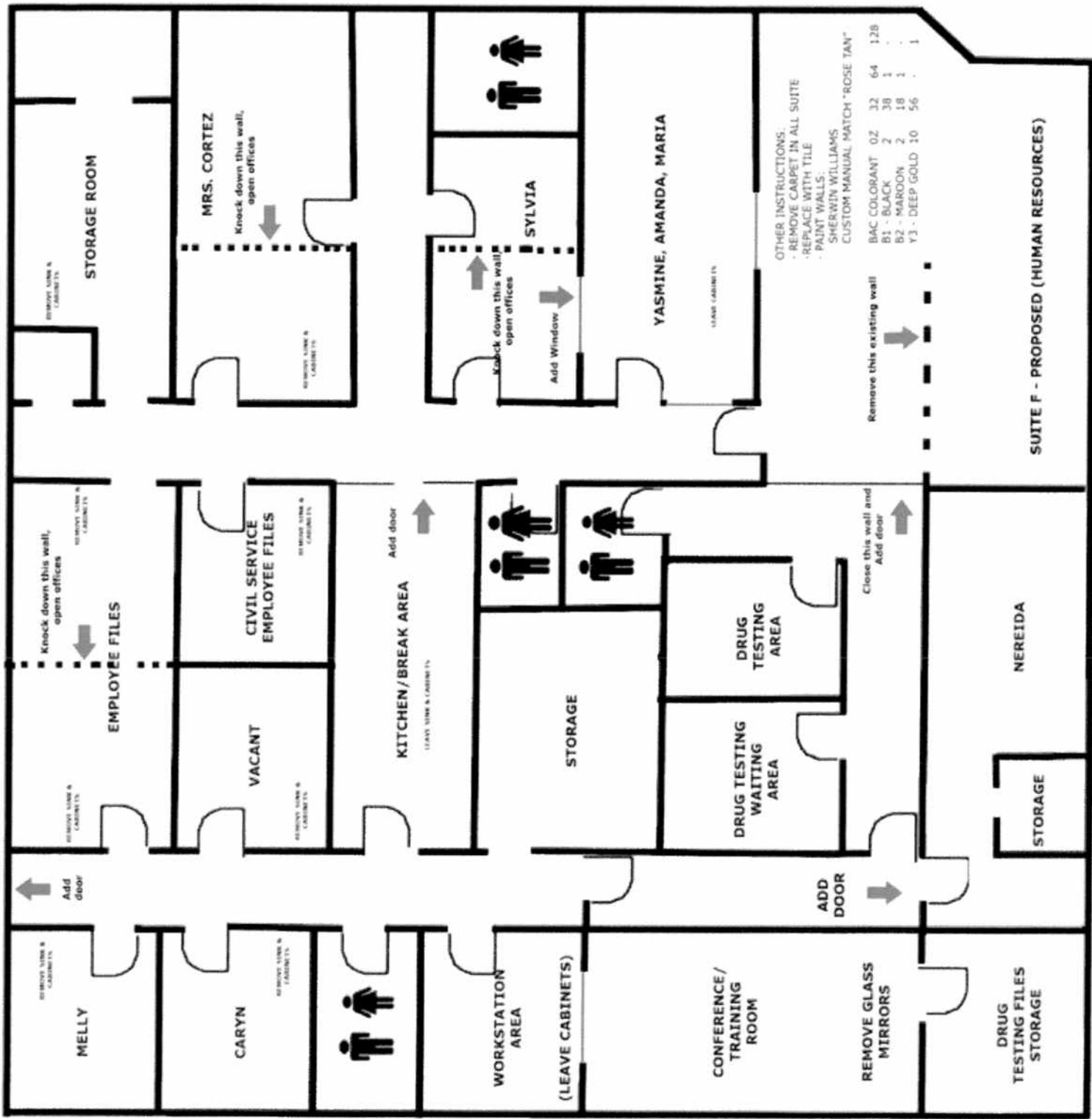
BREAK DOWN THIS WALL -->

EMERGENCY EXIT (CORNER)

SUITE F
HUMAN RESOURCES



SUITE F - ORIGINAL (HUMAN RESOURCES)



- OTHER INSTRUCTIONS:
- REMOVE CARPET IN ALL SUITE
 - REPLACE WITH TILE
 - PAINT WALLS: SHERWIN WILLIAMS CUSTOM MANUAL MATCH "ROSE TAN"

Remove this existing wall

BAC COLORANT	02	32	64	128
81 - BLACK	2	38	1	
82 - MAROON	2	18	1	
Y3 - DEEP GOLD	10	56		1

SUITE F - PROPOSED (HUMAN RESOURCES)

STORAGE ROOM

MRS. CORTEZ

SYLVIA

YASMINE, AMANDA, MARIA

EMPLOYEE FILES

CIVIL SERVICE EMPLOYEE FILES

KITCHEN/BREAK AREA

STORAGE

DRUG TESTING WAITING AREA

DRUG TESTING AREA

NEREIDA

STORAGE

MELLY

CARYN

WORKSTATION AREA

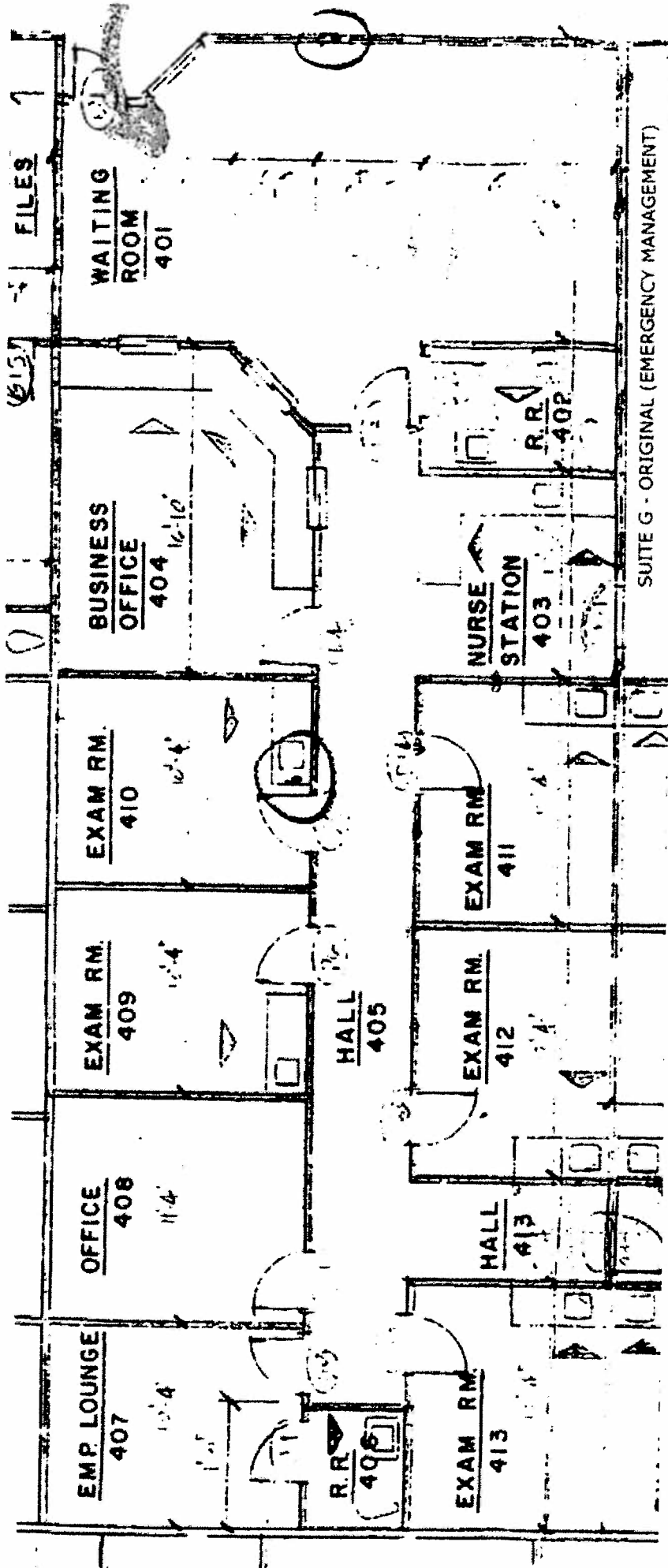
(LEAVE CABINETS)

CONFERENCE/TRAINING ROOM

REMOVE GLASS MIRRORS

DRUG TESTING FILES STORAGE

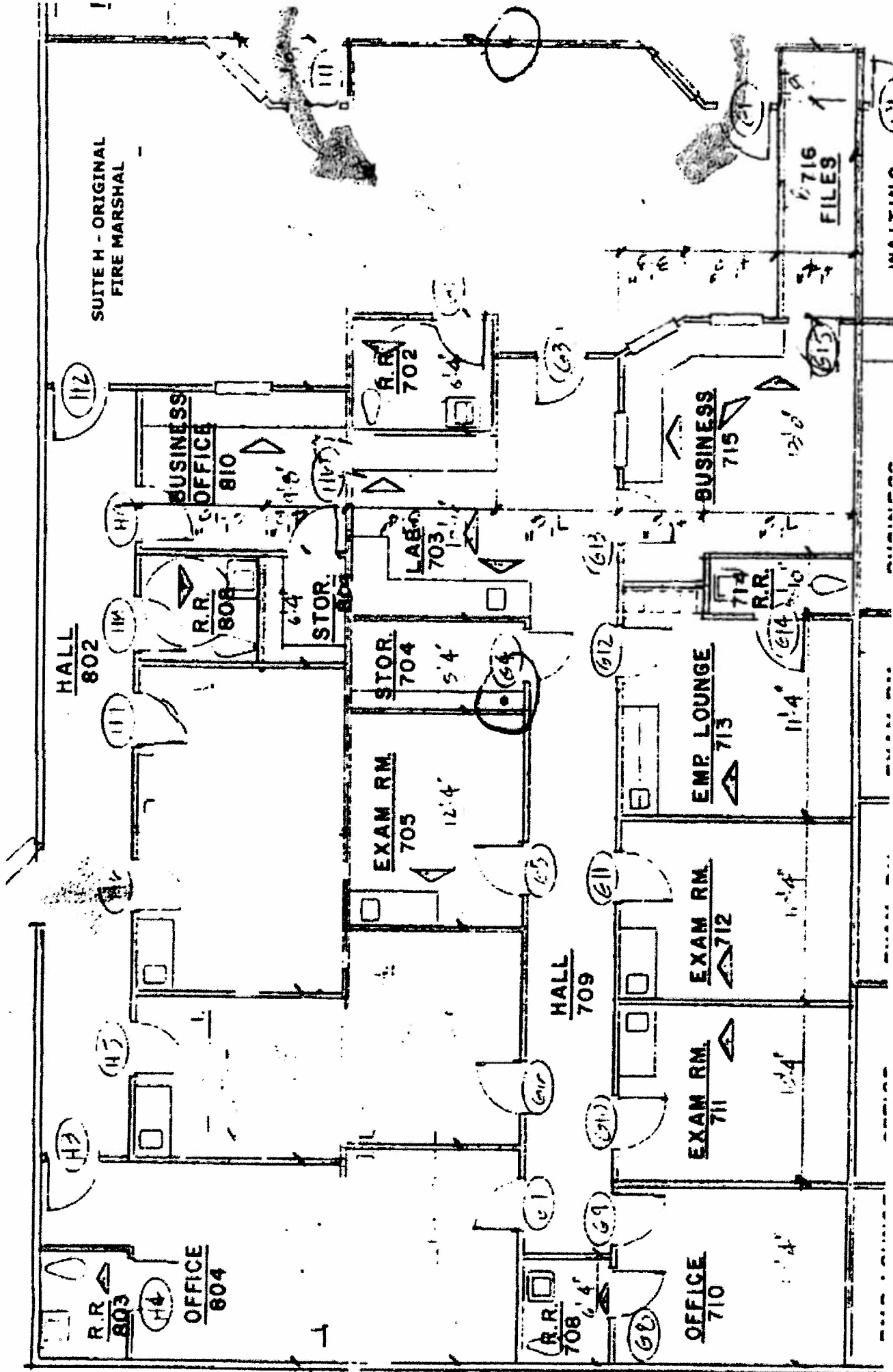
SUITE G
EMERGENCY MANAGEMENT



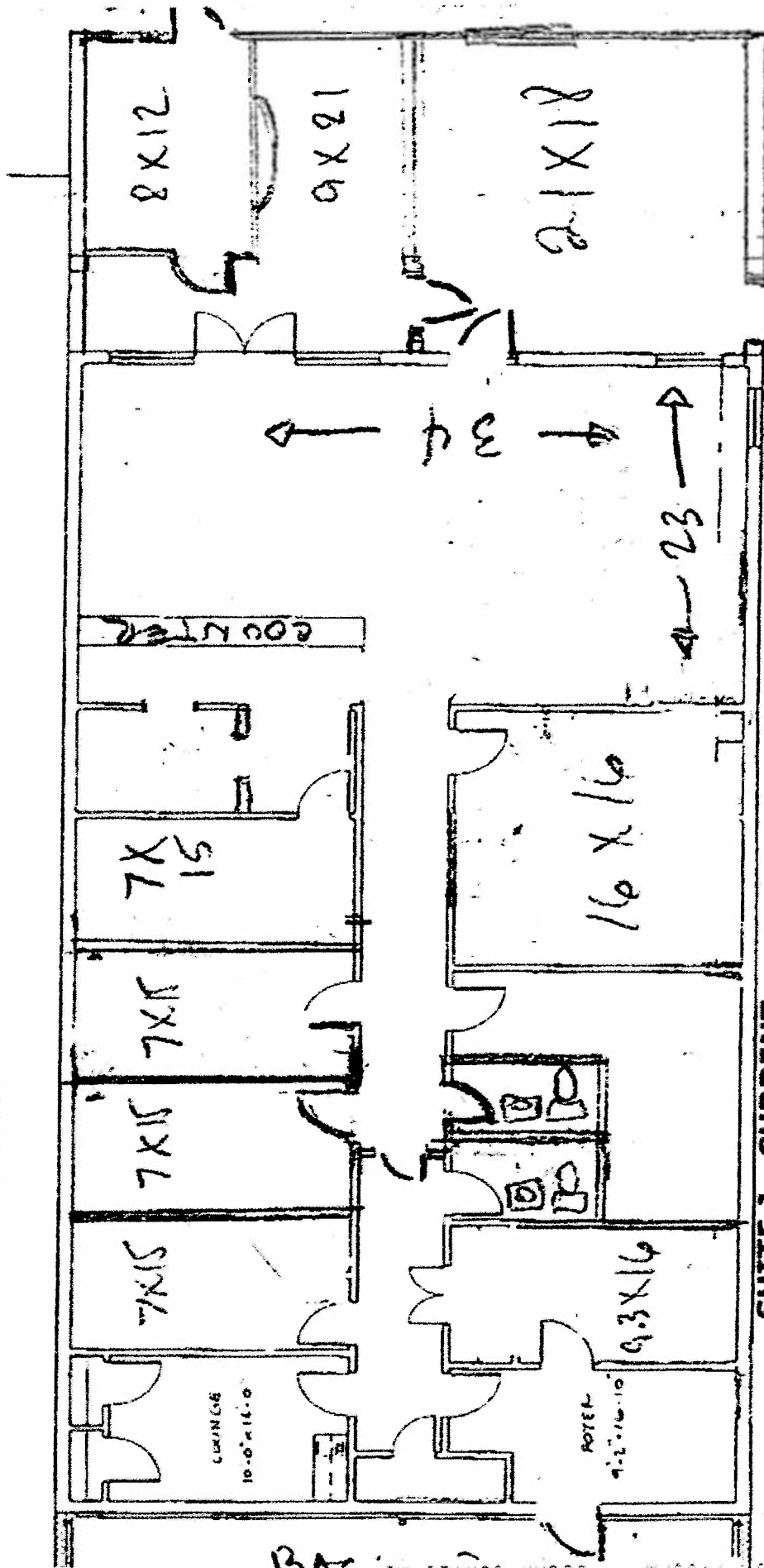
SUITE G - ORIGINAL (EMERGENCY MANAGEMENT)

**SUITE H
FIRE MARSHAL**

SUITE H - ORIGINAL
FIRE MARSHAL



SUITE J
COUNTY JUDGE

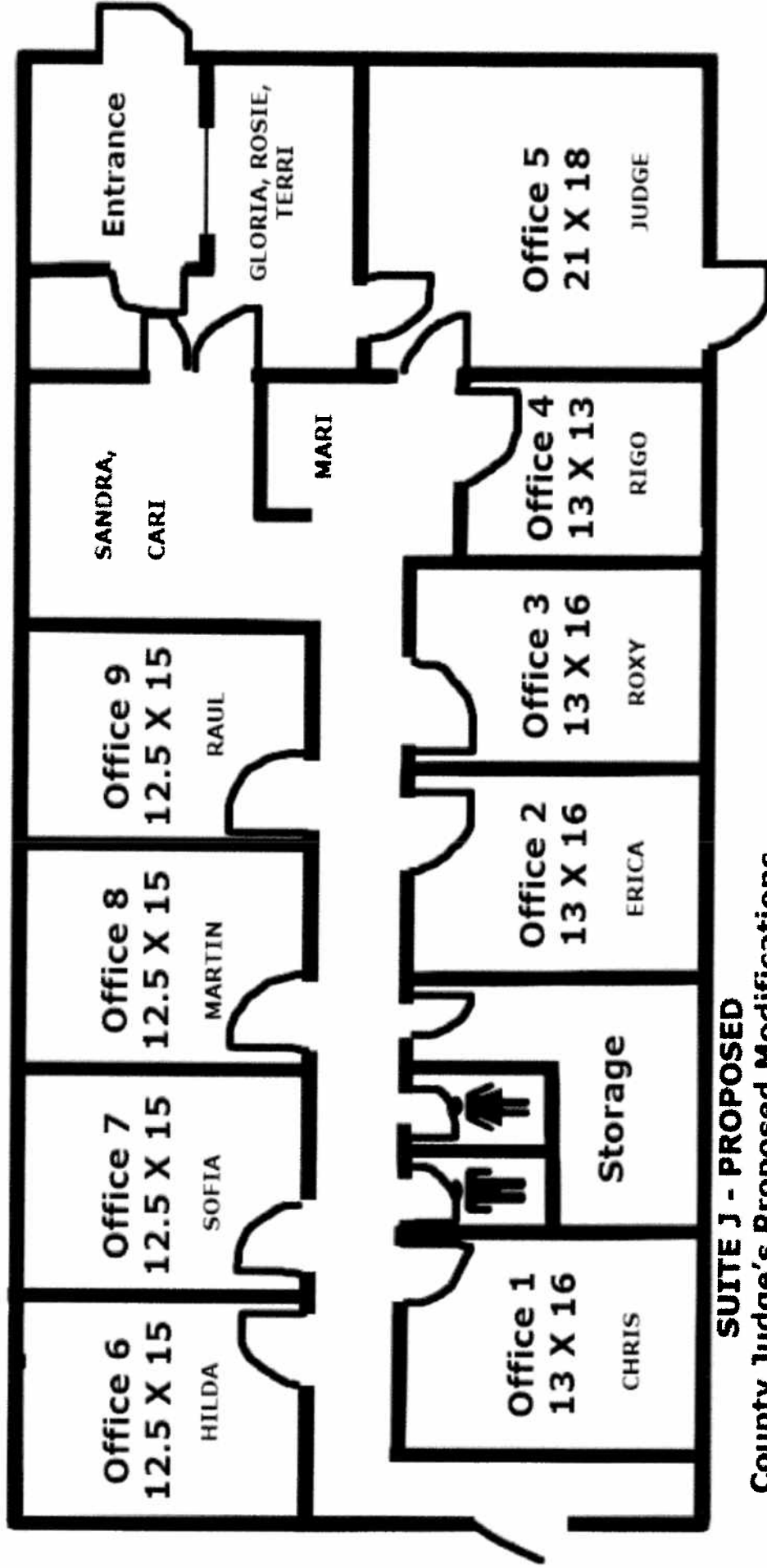


SUITE J - CURRENT

County Judge's Proposed Modifications

(All Dimensions are Rough Estimates) 92' x 40.8'

PROVIDE 6" x 8" x 7'-0" FIXED WINDOW TO MATCH EXISTING



SUITE J - PROPOSED

**County Judge's Proposed Modifications
(All Dimensions are Rough Estimates)**