

ACS Juror – InfoScan Module

Processing juror questionnaires and sorting juror information cards can be a laborious task. With ACS Infoscan, you can reduce the time it takes to process these forms. Through a strategic partnership with Scantron, ACS offers the ACS Juror InfoScan system, which not only speeds up, but revolutionizes, the way juror qualification questionnaires are processed.

Using this state-of-the-art solution, your organization can eliminate the massive data entry required by this stage of the jury management process. Prospective jurors complete jury questionnaires that are then scanned to process responses automatically, harvest applicable data, and store an image of the document.

ACS Juror InfoScan provides an unstaffed means of processing returned juror summonses, updating the ACS Juror database, and automatically disqualifying prospective jurors for service based on the Court's pre-established guidelines. The system scans and stores the image, and "reads" the form, interpreting the data and automatically recording the results to the database, making it possible for your staff to save time and focus on other important projects. Additional forms such as doctor's letters, employment letters, etc., can also be imaged and stored to the juror's records.

Additionally, the images of the documents are indexed and associated with the juror so that they can be printed three to a page based on the panel, eliminating the need to sort and copy the cards.

The use of the ACS Juror Infoscan system and scanners being proposed can be expanded in the future should the Court identify other opportunities to utilize document imaging to improve efficiencies.

SOFTWARE

Cognition software provides the capability to capture OMR data as well as image documents for verification, storage and retrieval. Please note that pricing is included for a Workstation solution.

HARDWARE

This proposal includes pricing for the iNSIGHT 20 dual sided Imaging/OMR Scanner. The iNSIGHT scanner is a desktop scanner that has the capability to collect data written in pen or ink. Along with the OMR data capture function this scanner offers the capability to image clip handwritten data such as "remarks" and save them as jpegs or a .tiff file then they can be appended to a report.

PRICING

This proposal includes pricing for a combined software and hardware solution for the Hidalgo County, TX to process Jury Summonses as well as related services. This proposal is based upon Hidalgo County Court's objectives to automate their data collection using an OMR and Imaging data collection process.

ACS InfoScan Solution Detailed Pricing

ACS InfoScan	Proposed Price
ACS InfoScan Imaging Solution	
Professional Services: Scripting Image Processing, Mapping, Report Layout, Upload Processing	\$8,200
Professional Services: Training	\$6,000
ScanTron Cognition Professional Imaging Software (1 unit)	\$10,372
ScanTron iNSIGHT 20 high-speed scanner (2 units)	\$4,990
Product Support & Enhancement Program (First-Year Fees)	\$3,200
Total 1st Year Costs – ACS InfoScan	\$32,762

ACS InfoScan	Proposed Price
ACS InfoScan Documents	
Form Design	\$1,500
Form Cost (Jury Summons/Questionnaire) 40,000 forms	\$4,560
Freight	included
Total Costs – ACS InfoScan Forms	\$6,060

1. Travel costs not included and will be billed as incurred

iNSIGHT™20 Document Scanner

System Solutions

SCANTRON



The Next Step In The Evolution

The iNSIGHT™ 20 from Scantron® is a compact, affordable desktop model scanner that combines document imaging technology along with the proven data collection capabilities and accuracy of optical mark recognition (OMR). The iNSIGHT 20 is an industry exclusive scanner. Scantron applied over fifty years of engineering, forms design, applications development and customer support experience to ensure our customers' success. Whenever you need a reasonably priced and compact scanner that has the accuracy of OMR and the productivity and flexibility of Document Imaging, the iNSIGHT 20 is the right solution for you.

Meeting Your Document Imaging and OMR Needs

Due to its unique blend of capabilities, the iNSIGHT 20 is well priced and perfectly positioned to address applications such as testing, surveys attendance, grading, student portfolios, personnel records, archival, and general back file conversions. Depending on your requirements and budget, Scantron can meet the needs of your application. For higher-volume processing needs, Scantron also offers the iNSIGHT 30, which also combines full document imaging with the accuracy of OMR.



Data Collection

Data Collection is the process of reading marks from a printed form (e.g. tests, surveys, ballots, etc.) and converting it to ASCII data. The iNSIGHT 20 accurately scans the form for data while our ScanTools Plus™ software controls the scanning process and stores the data that is read. The scanner and software work together reading up to 1,800 sheets per hour.

The iNSIGHT 20 scanner can read written marks (such as bubbles, check marks, tick marks) and bar codes. The scanner, working with ScanTools Plus software, can also scan grayscale images for digital storage. In addition, the iNSIGHT 20 can read machine print and handprint using RealTime Character Recognition software (available separately).

Outstanding Accuracy

Data Collection Features

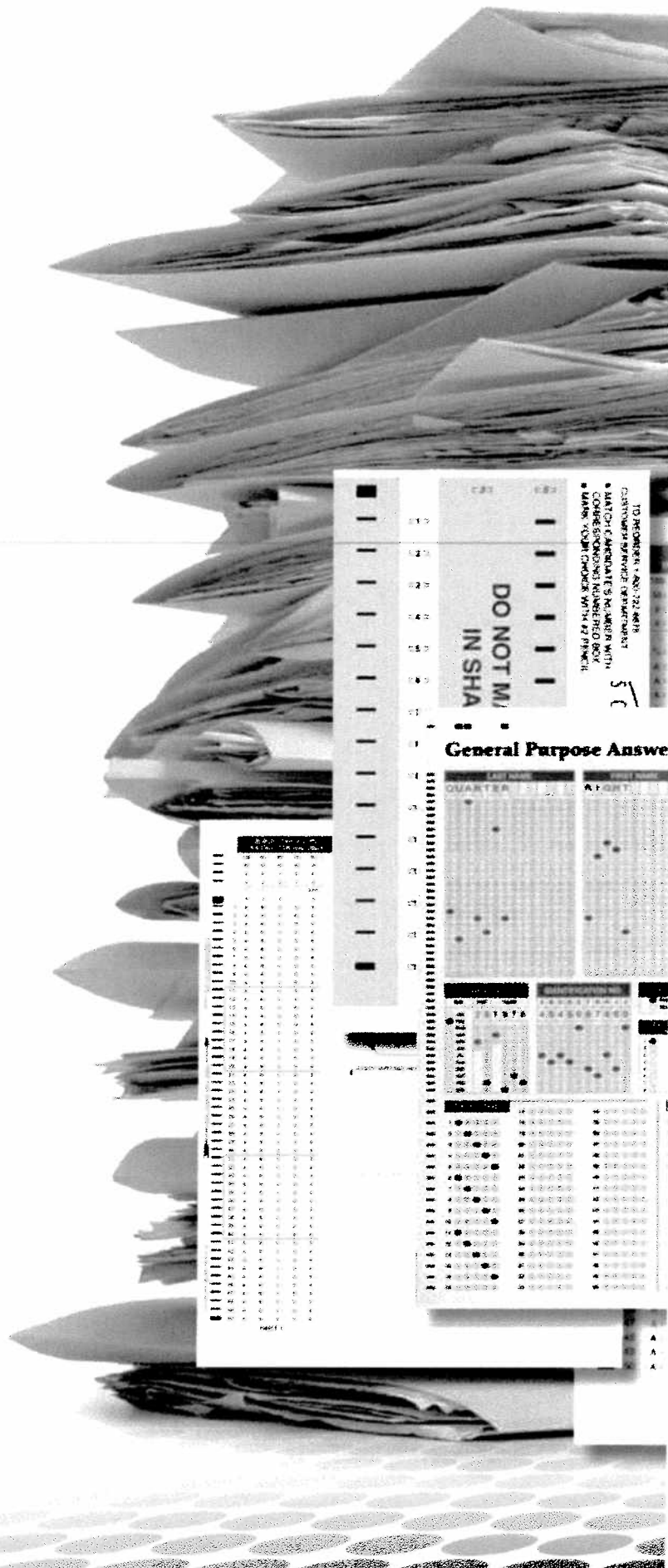
- Includes ScanTools Plus data collection software
- Provides 8-bit, 256 grayscale levels and 200 dpi images
- Ink and pencil mark detection
- Allows you to capture, name and archive image clips (TIFF, JPEG)
- Software recognized bar code
- Processes machine and hand print data with the optional RealTime Character Recognition utilizing NestorReader software
- Maintains software compatibility with existing ScanTools applications

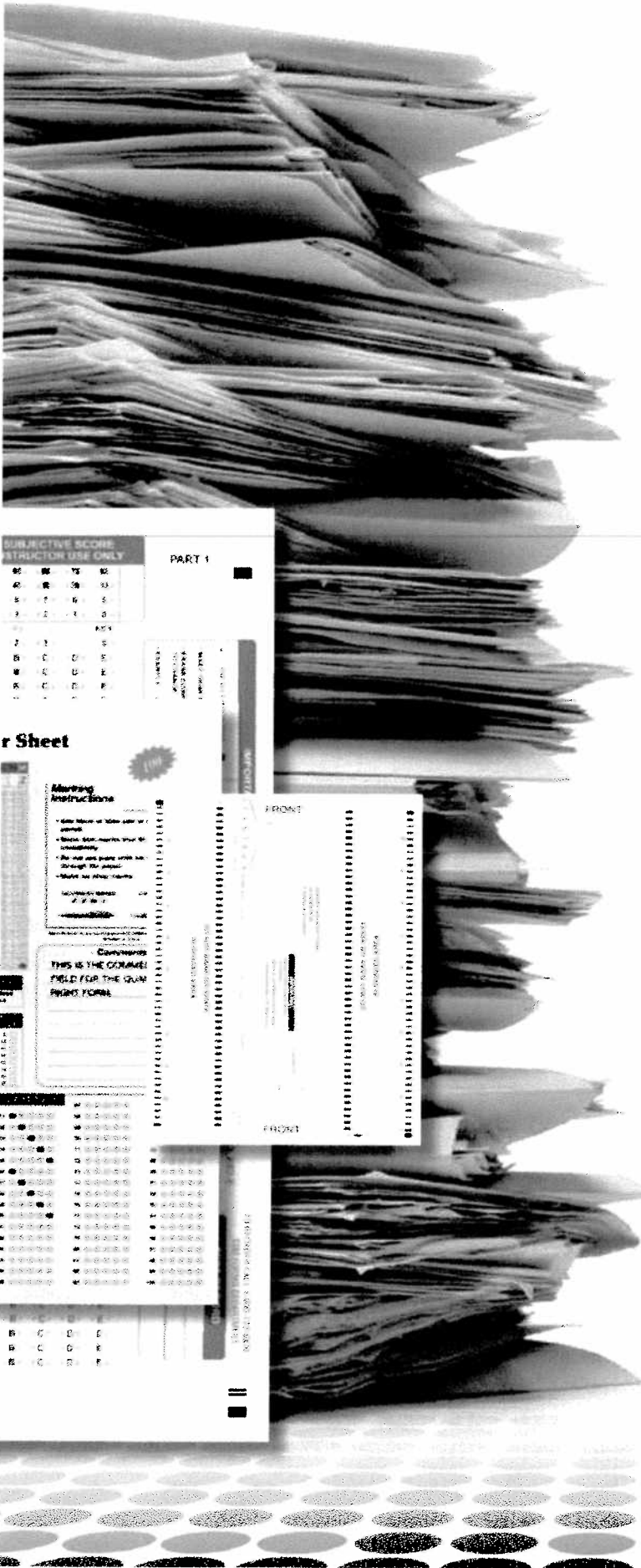
Document Imaging

Document imaging is the process of scanning paper documents, converting them to digital images. We know that the documents you work with aren't always the perfect size, shape or quality for scanning; that is what makes the iNSIGHT 20 perfect for your scanning needs.

This scanner can effortlessly handle sheets of multiple sizes and thickness in a single batch; from small card stock to long print-outs. After scanning, with one-click you can select the format of the scanned image, the resolution, the file type, and the destination of the resulting file using the Click&Scan software.

In document imaging mode, the iNSIGHT 20 scanner with Click&Scan software, can scan up to 1,800 two-sided black&white, grayscale and color images at 200 dots-per-inch (dpi) per hour.





Exceptional Productivity

Document Imaging Features

- Includes Click&Scan software which offers one-click functionality to send documents to file, email, printers, fax printers and desktop applications
- Utilizes TWAIN Driver (included)
- Output resolutions from 75 to 1200 dpi
- Interactive brightness, contrast, and color adjustment
- Optical resolution at 600 dpi
- Scans at speeds up to 30 page per minute/60 images per minute
- Simultaneous black & white, color or grayscale image output
- Save files in TIFF, JPEG, RTF and PDF formats
- Supported by Scantron's extensive services organization to ensure maximum uptime and customer satisfaction

Customer Application Sidebars

Testing and Training

- Tests and learning assessment
- Instructor, performance, and course evaluations
- Enrollment and tracking
- Employee in-services
- Student profiles, documentation, and forms

Research and Evaluation

- Survey and questionnaire data collection
- Product research
- Program evaluations
- Competitive data collection
- Enrollment and applications

Human Resources

- Payroll/time sheets
- Benefit enrollments
- Applicant tracking
- Employee change of status
- Employee surveys
- 360-Degree surveys

Healthcare

- Patient encounter forms
- Patient satisfaction surveys
- Medical histories and patient forms
- Patient, needs and risk assessments
- Nurse staffing reports
- Continuing education evaluations

General Specifications

Scanning Technology	Dual CCD/Grayscale output bit depth is 256 levels (8-bit), Color capture bit depth is 48 bits (16 x 3), Color output bit depth is 24 bits (8 x 3).
Optical Resolution	600 dpi
Multi-feed Detection	With ultrasonic technology
Connectivity	USB 2.0
Bundled Software	TWAIN Drivers; Click & Scan; ScanTools Plus
Electrical Requirements	100-240 V (International); 50/60 Hz; Universal power supply included
Power Consumption	Sleep Mode < 6 watts, Running: < 35 watts
Environmental Factors	Energy Star qualified scanner; Operating temperature: 15-35° C (59-95° F); Operating humidity: 15-76 percent relative humidity
Acoustical Noise (operator position sound pressure level)	Standby mode: <32 dB(A); Operating mode: <65 dB(A)
Physical Description	30" x 13" x 10.75" operational, 6.5" x 13" X, 9.5" storage foot print, Weight: 16.5 lbs
Recommended PC Configuration	For documents up to 356 mm (14 in.) long at 400 dpi: Pentium 4, 3.2 GHz processor, 512 MB RAM For documents up to 660 mm (26 in.) long at 400 dpi: Pentium 4, 3.2 GHz processor, 1 GB RAM For longer documents/higher resolutions: Pentium 4, 3.2 GHz processor, 3 GB RAM
Supported Operating Systems	Windows XP SP2; Windows Vista (32-bit)

Data Collection Specification

Throughput	Up to 1800 Sheets per hour
Read Heads	200 dpi resolution, up to 256 levels of grayscale per pixel; pencil and ink read capabilities
Forms	2.5" x 5.5" to 8.5" x 14" (60-100 lb. Offset), Uses both Mark Reflex and Trans-Optic forms; Pencil and ink forms may be used
Feeder Capacity	40 sheets, 90 g/m2 (24 lb bond, 60 lb Offset)
Spacing's supported	.166, .166 48 cell, .200 inline, .200 offset, .200 line read, and .300 line read
Barcode	Standard - Software read through ScanTools
Bundled Software	ScanTools Plus

Document Imaging Specifications

Throughput (200 dpi, landscape, letter size, black and white/grayscale/color)	Up to 30 page per minute/ 60 images per minute
Image output	Black and white, grayscale (8 bit), color (24 bit)
Output resolution	75, 100, 150, 200, 240, 300, 400, 600 and 1200 dpi
Maximum document size	216 mm x 863 mm (8.5 in. x 34 in.)
Minimum document size	64 mm x 89 mm (2.5 in. x 3.5 in.)
Paper Thickness and Weight	34-413 g/m2 9-110 lb.) paper
Feeder Capacity	Up to 70 sheets of 60 g/m ² (16 lb.) paper
Bundled Software	TWAIN driver, Click & Scan
File Format Outputs	Single and multi-page TIFE, JPEG, RTE, PDF

Please visit us at www.scantron.com for a complete overview of INSIGHT system requirements or call us at 1-800-SCANTRON for more information.

© 2009 Scantron Corporation. All rights reserved. Scantron and the Scantron logo are registered trademarks. P/N 277-223-004



SCANTRON®

Cognition®

Standard and Professional Editions

Forms Processing Solution



Quickly and accurately transform paper documents into valuable intelligence.

In today's fast-paced business environment, the need has never been greater for organizations to efficiently manage the thousands of forms, faxes and paper images they must handle every day. That's why so many have turned to Scantron's Cognition software. This forms processing solution automates the slow, labor-intensive data entry process. The result is efficient and accurate automated forms processing, data collection and input environments that scale to fit the needs of any size company. Cognition works by collecting paper forms and documents and digitizing them, then delivering them to the right databases and other business applications as needed.

Fast

Cognition takes just a few seconds per form, depending on form complexity and hardware specifications. (That's more than 20 times faster than a professional typist.)

Precise

Cognition recognizes handprint (ICR), machine print (OCR), bar code, checkboxes and checkmarks (OMR) with unerring precision.

Accurate

Cognition provides correct and valid data and image capture using configurable recognition options that allow crosschecks, validation rules, and business logic. You can also add application-specific capabilities or create custom validation rules and logic to fit any project requirement.

Efficient

Cognition's high processing speed, quality of recognition, automatic control of output results and competitive pricing makes it not only the best value, but the most efficient automatic data capture system available.

Cognition Standard and Professional Editions for standalone workstations.

The Cognition Standard and Professional Editions are designed for standalone workstation forms processing. Both can be quickly and easily installed and configured with minimal IT resources. Within a matter of hours, you can be up and running, regardless of whether you process a few dozen forms each day or thousands each week.

The Standard edition is the right choice for organizations that are processing traditional bar code, checkbox and checkmark (OMR) forms and need to retain post recognition images.

The Professional edition provides a complete solution for organizations that process a variety of OMR forms, as well as machine print (OCR), and handprint (ICR) from department forms and surveys.



Scan

- TWAIN scanner support
- ADF support and manual input feeding
- Page orientation detection
- Import of graphic formats (TIFF, JPG, PCX, DCX, PNG & BMP)
- Image pre-processing, deskewing and "noise" cleaning
- Compensation of linear distortions using "cornerstones" (for faxed forms etc.)

Recognize

- Build-in template designer
- Template auto-identification
- Various reference elements: black squares, text, lines, images
- OCR/ICR "Fountain" Image Transformation Technology (Professional edition only)
- Hand-print, machine print and mixed text (Professional edition only)
- Mark sense (OMR): check boxes, radio groups, any type of mark
- Bar code recognition: EAN13, EAN8, Check Code 3, Check Interleaved 25, Code 39, Code 128
- 18 languages for hand-print recognition: English, German, French, Italian, Russian, Polish, Ukrainian, Bulgarian, Czech, Slovak, Lithuanian, Spanish, Dutch, Finnish, Romanian, Turkish, Croatian and Hungarian (Professional edition only)

- Bordered text: framed, text over comb, underlined (Professional edition only)
- Multi-line text (Professional edition only)
- Field position detection
- Supports several styles of hand-writing: European, American, Russian, Japanese, and Thai (Professional edition only)
- Scan & Read / Open & Read modes
- Background recognition
- Interpretation of checkboxes marked by mistake ("shaded areas")

Verify

- Standard validation and automation rules
- Spell check
- Contextual checking
- Pre-defined data types: names, addresses, etc. (Professional edition only)
- User-defined data types (Professional edition only)
- Checks against databases (Professional edition only)
- Context and group verification and in-form data validation

Export

- Database (ODBC)
- File (XML, TXT, CSV, DBF, XLS)
- Standard picture export
- Automation export

Standard and Professional Edition Minimum Requirements

- PC with Pentium 350 MHz for Windows XP, Pentium 200 MHz for Windows 2000/ME/98
- Microsoft Windows XP/2000/ME, Windows 98 (Y2K Update 2)
- 128 MB of RAM for Windows XP, 64 MB RAM for Windows 2000; 32 MB RAM for Windows ME/98
- 120 MB of free hard disk space for minimal installation
- Microsoft Internet Explorer 5.0 or later
- Mouse or other pointing device
- TWAIN-compatible scanner
- CD-ROM drive
- SVGA monitor (600x800 or higher resolution)
- USB port for hardware protection key



Please visit us at www.scantron.com for a complete overview of Cognition's system requirements or call us at (800) 722-6876 for more information.