

**Curve Table**

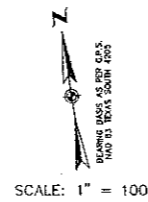
Curve #	Length	Radius	Delta	Tangent	Chord Length	Chord Direction
C1	35.02'	636.17'	55°51'35"	37.51'	58.01'	N79°29'17"W
C2	24.05'	636.17'	64°00'07"	37.06'	74.00'	N72°04'56"W
C3	43.15'	536.19'	59°54'53"	34.07'	68.13'	N73°48'56"W
C4	43.77'	536.19'	4°40'38"	31.89'	63.78'	N70°43'30"W
C5	55.01'	536.19'	52°42'37"	34.27'	59.07'	N70°07'31"E
C6	36.91'	536.19'	35°53'34"	18.48'	36.50'	S73°12'52"E
C7	80.76'	636.19'	71°54'34"	18.48'	80.54'	S74°53'38"E
C8	24.36'	636.19'	23°51'14"	14.15'	28.36'	S79°47'18"E
C9	60.67'	90.00'	69°09'04"	34.79'	57.12'	N61°17'51"W
C10	70.10'	90.00'	80°19'36"	42.20'	64.50'	N58°48'00"E
C11	70.10'	90.00'	80°19'36"	42.20'	64.50'	S40°52'34"E
C12	60.87'	90.00'	69°40'04"	34.79'	57.12'	S34°06'54"W

**Lot Line Table**

Line #	Length	Direction
L20	70.72'	N36°01'13"W
L21	70.71'	N53°58'47"E
L22	20.45'	S53°59'02"W
L23	21.21'	N36°00'58"W
L24	21.21'	S36°00'58"E
L25	21.21'	N53°59'02"E
L26	21.21'	S53°59'02"W
L27	21.21'	N36°00'58"W
L28	21.21'	S36°00'58"E
L29	21.21'	N53°59'02"E
L30	49.50'	S53°59'07"W
L31	49.50'	S36°00'53"E
L32	49.50'	N36°03'53"W
L33	49.50'	N53°58'07"E
L34	20.88'	S36°56'58"E
L35	20.88'	N54°49'00"E

**CURVE TABLE**

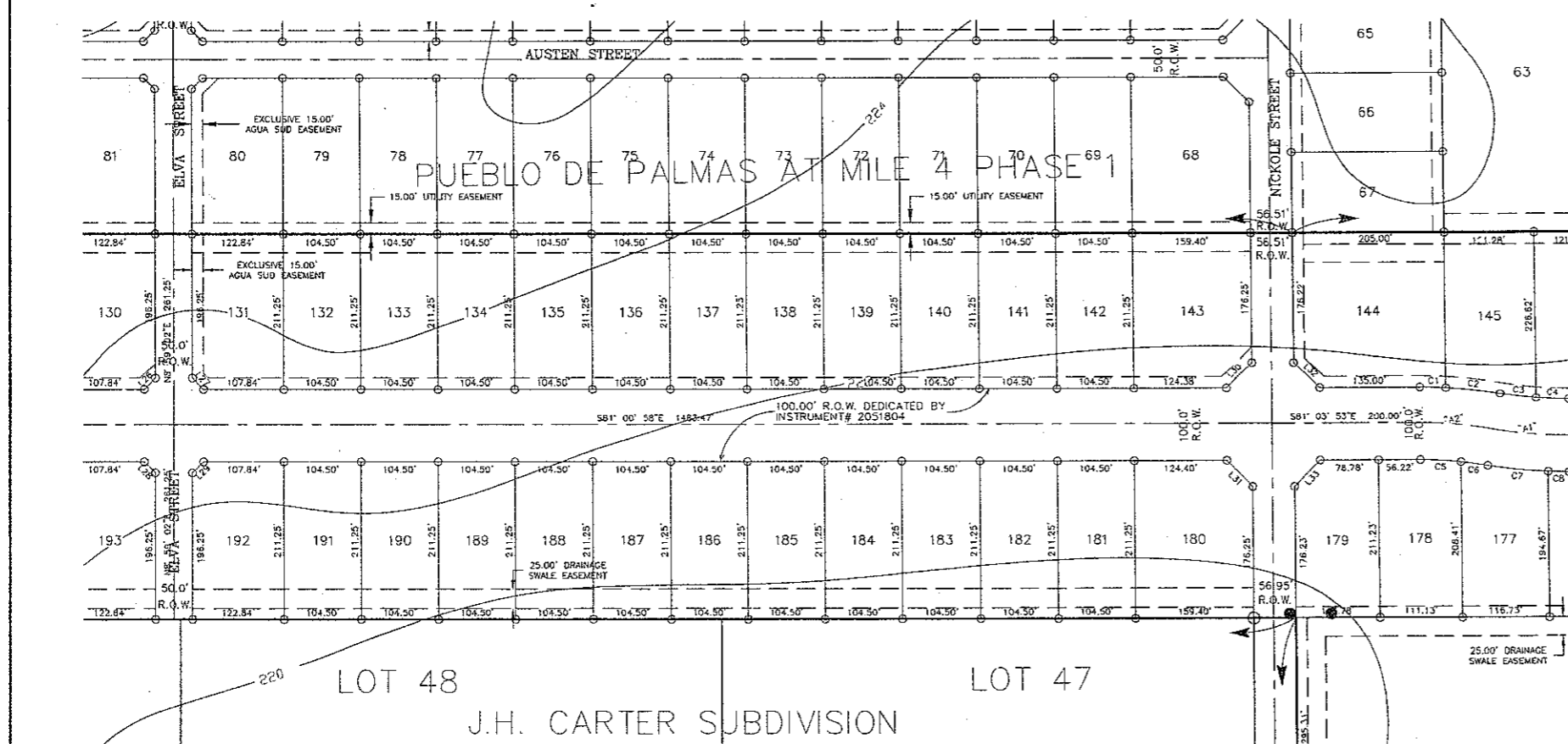
CURVE #	Delta	Radius	Length	Tangent	Chord	Direction
A1	9.49 21'	586.19'	100.49'	50.37'	5 76° 09' 13" E	
A2	9.49 21'	586.19'	100.49'	50.37'	5 76° 09' 13" E	



**LEGEND**

- FIN. NO. 4 REBAR
- FIN. PIPE
- SET NO. 4 REBAR W/PLASTIC CAP STAMPED WELDON & HUNT & SET C.P.S.

**SUBDIVISION MAP OF**  
**PUEBLO DE PALMAS AT MILE 4**  
**PHASE 2**  
 BEING A RESUBDIVISION OF 100.190 ACRES  
 CONSISTING OF  
 52.392 ACRES OUT OF LOTS 47 THRU 52  
 J.H. CARTER SUBDIVISION  
 VOL. 2, PG. 44, H.C.M.R. &  
 47.117 ACRES OUT OF LOTS 21-24 &  
 BEING ALL OF LOTS 1 THRU 3  
 HOMEVILLE SUBDIVISION "C"  
 VOL. 6, PG. 60, H.C.M.R.  
 &  
 0.680 OF ONE ACRE OUT OF A COUNTY ROAD RIGHT-OF-WAY  
 LYING BETWEEN SAID J.H. CARTER SUBDIVISION &  
 HOMEVILLE SUBDIVISION "C"  
 HIDALGO COUNTY, TEXAS.



**M MULDEN & HUNT INC.**  
 CONSULTANTS • ENGINEERS • SURVEYORS  
 115 W. McPHERRE 227 N. P.M. 3167  
 EDWING, TX 78541 409 DRIVE OFF. N. 1680  
 PH: (956) 381-0931 PH: (956) 487-8256  
 FAX: (956) 381-1835 FAX: (956) 483-8591  
 ESTABLISHED 1947 www.muldendandhunt.com

SHEET 2 OF 3 SHEETS

REVISION NOTES			
NO.	SHEET	REVISION	DATE