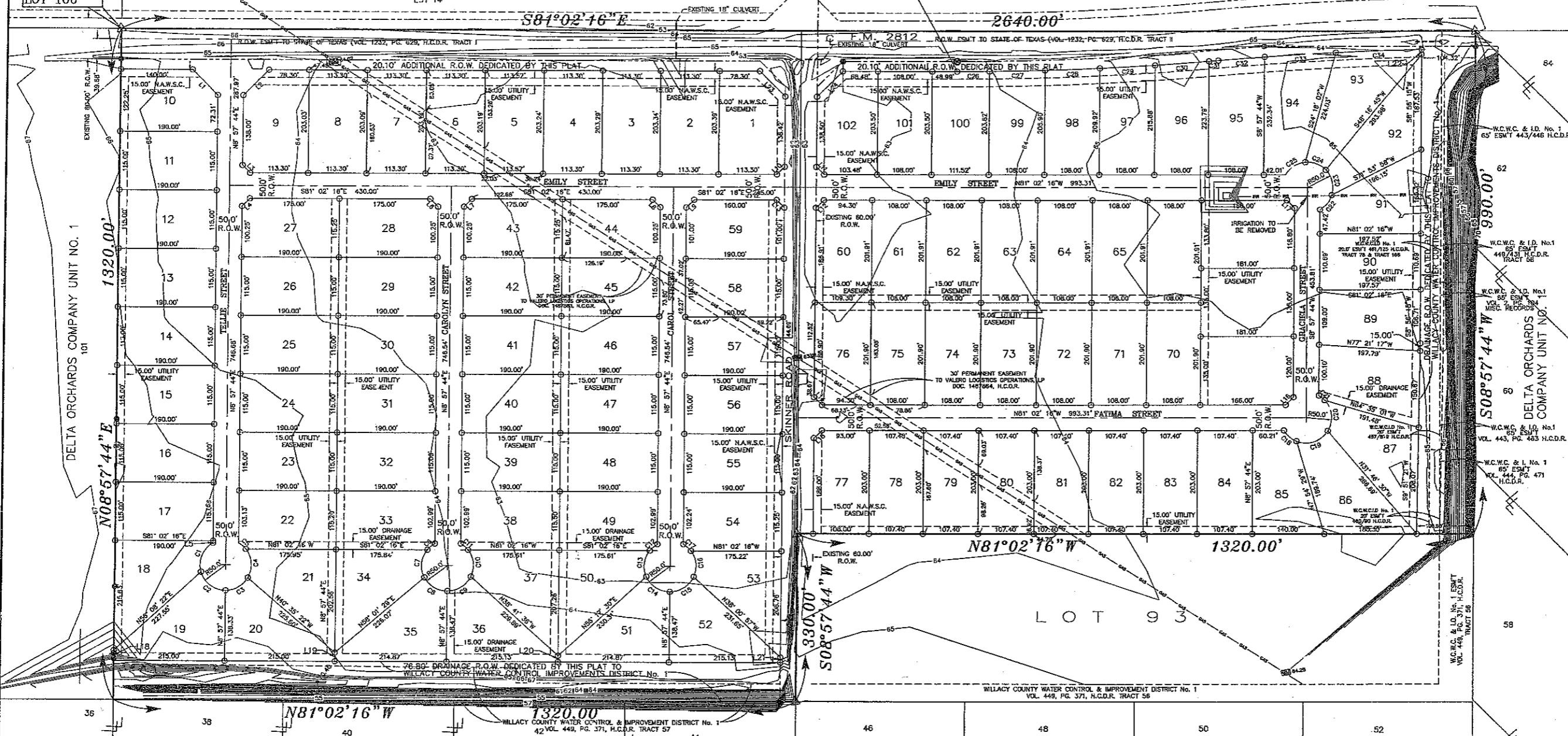


P.O.B.  
N.W. COR.  
LOT 100

MISSOURI TEXAS LAND & IRRIGATION COMPANY SUBDIVISION

BLOCK 69

LOT 15



BEARING BASIS AS PER G.P.S.  
NAD 83 TEXAS SOUTH 4205

SCALE: 1"=100'

SUBDIVISION MAP OF  
**PUEBLO DE PALMAS PHASE 12**  
BEING A RESUBDIVISION OF 70.000 ACRES  
OUT OF LOTS 94, 95, 98, 97, 98, 99, & 100  
DELTA ORCHARDS COMPANY UNIT No. 1  
VOL. 8, PG. 7, H.C.M.R.  
HIDALGO COUNTY, TEXAS.

Curve Table

Curve #	Length	Radius	Bearing	Chord Length	Chord Direction
C1	86.19'	50.00'	79°59'44"	36.26'	S31°02'22"W
C2	94.77'	74.00'	74°09'16"	37.76'	S43°57'38"E
C3	52.40'	90.00'	60°02'27"	28.80'	N68°58'30"E
C4	58.68'	90.00'	60°02'27"	34.17'	N4°30'51"E
C5	15.83'	50.00'	21°29'42"	6.42'	N40°21'59"W
C6	18.01'	90.00'	21°29'42"	18.70'	S08°11'13"W
C7	67.84'	50.00'	64°18'29"	32.64'	S14°18'27"W
C8	54.13'	50.00'	62°01'36"	30.09'	S48°52'34"E
C9	56.31'	50.00'	54°31'49"	31.57'	N68°50'44"E
C10	58.53'	50.00'	63°37'47"	31.07'	N2°45'58"E
C11	18.10'	50.00'	21°29'42"	9.71'	N40°02'37"W
C12	18.10'	50.00'	21°29'42"	9.71'	S07°58'05"W
C13	54.18'	50.00'	62°01'36"	30.09'	S10°58'47"W
C14	57.43'	50.00'	60°48'30"	32.35'	S47°58'07"E
C15	57.84'	50.00'	60°02'27"	32.52'	N68°50'15"E
C16	53.97'	50.00'	61°23'28"	28.85'	N2°22'10"E
C17	18.02'	50.00'	22°42'13"	10.54'	N30°46'54"W
C18	33.33'	50.00'	38°11'28"	17.37'	S40°08'01"E
C19	70.31'	50.00'	60°34'16"	42.38'	N60°29'06"E
C20	63.04'	50.00'	74°21'48"	30.54'	N12°56'05"E

Curve Table

Curve #	Length	Radius	Bearing	Chord Length	Chord Direction
C21	14.50'	50.00'	10°42'26"	7.54'	N43°41'09"W
C22	37.32'	50.00'	42°57'02"	18.62'	N47°32'13"E
C23	53.17'	50.00'	60°20'31"	28.41'	N47°21'04"W
C24	48.09'	50.00'	61°40'23"	24.91'	N02°38'07"W
C25	47.01'	50.00'	64°32'04"	25.76'	S08°14'15"W
C26	62.53'	90.00'	07°30'37"	31.27'	S81°20'04"E
C27	108.02'	100.00'	17°31'	54.01'	S02°02'30"E
C28	108.07'	100.00'	17°31'	54.04'	S08°10'11"E
C29	108.17'	100.00'	17°31'	54.05'	S04°11'48"E
C30	108.29'	100.00'	17°31'	54.10'	S08°12'24"E
C31	18.10'	50.00'	07°02'	9.69'	S08°42'23"E
C32	60.10'	60.00'	07°02'	30.00'	S08°30'50"E
C33	140.00'	60.00'	11°37'	70.00'	S84°30'25"E
C34	187.90'	60.00'	12°18'	93.90'	S87°08'28"E

Lot Area Table

Lot #	Acres	Sq. Ft.
1	0.568	24736.07
2	0.529	23041.76
3	0.529	23036.04
4	0.529	23030.31
5	0.530	23079.45
6	0.528	23018.85
7	0.528	23013.12
8	0.528	23007.40
9	0.507	22484.44
10	0.505	21984.80
11	0.502	21850.00
12	0.502	21850.00
13	0.502	21850.00
14	0.502	21850.00
15	0.502	21850.00
16	0.502	21850.00
17	0.502	21849.82
18	0.537	23388.82
19	0.536	23358.68
20	0.500	21789.77
21	0.505	21999.40
22	0.500	21792.25
23	0.502	21850.00
24	0.502	21850.00
25	0.502	21850.00

Lot Area Table

Lot #	Acres	Sq. Ft.
26	0.502	21850.00
27	0.500	21785.00
28	0.500	21785.00
29	0.502	21850.00
30	0.502	21850.00
31	0.502	21850.00
32	0.502	21850.00
33	0.500	21780.27
34	0.500	21780.77
35	0.505	21995.97
36	0.501	21817.97
37	0.504	21941.90
38	0.501	21842.99
39	0.502	21850.00
40	0.502	21850.00
41	0.502	21850.00
42	0.502	21850.00
43	0.500	21785.00
44	0.500	21785.00
45	0.502	21850.00
46	0.502	21850.00
47	0.502	21850.00
48	0.502	21850.00
49	0.501	21842.99
50	0.500	21791.27

Lot Area Table

Lot #	Acres	Sq. Ft.
51	0.504	21932.75
52	0.500	21785.61
53	0.502	21878.55
54	0.500	21788.19
55	0.502	21802.00
56	0.502	21850.00
57	0.502	21850.00
58	0.502	21849.77
59	0.501	21815.23
60	0.504	21995.86
61	0.501	21807.05
62	0.501	21807.05
63	0.501	21807.05
64	0.501	21807.05
65	0.501	21805.61
66	0.501	21806.47
67	0.503	24106.00
68	0.561	24435.68
69	0.559	24323.00
70	0.501	21805.34
71	0.501	21804.48
72	0.501	21805.92
73	0.501	21805.92
74	0.501	21805.92
75	0.501	21805.92

Lot Area Table

Lot #	Acres	Sq. Ft.
76	0.504	21954.72
77	0.501	21811.05
78	0.501	21802.85
79	0.501	21802.20
80	0.501	21802.20
81	0.501	21802.20
82	0.501	21802.20
83	0.501	21802.20
84	0.504	21995.86
85	0.547	23623.88
86	0.536	23367.34
87	0.578	25157.87
88	0.523	22783.13
89	0.502	21866.53
90	0.514	22391.69
91	0.507	22067.78
92	0.575	25057.83
93	0.565	24595.52
94	0.566	24644.32
95	0.545	23725.19
96	0.527	22976.14
97	0.515	22436.91
98	0.508	22107.75
99	0.521	22700.50

Lot Area Table

Lot #	Acres	Sq. Ft.
101	0.505	21977.47
102	0.522	22747.62

- LEGEND**
- ⊖ FND. No.4 REBAR
  - ⊗ FND. No.5 REBAR
  - R.O.W. MARKER
  - SET No.4 REBAR W/PLASTIC CAP STAMPED MELDEN & HUNT
  - △ SET C.P.S.
  - ⊞ IRRIGATION VALVE
  - ⊞ 36" IRRIGATION STAND PIPE
  - ⊞ 12" IRRIGATION VENT

Line Table

Line #	Length	Direction
L1	70.71'	S36°02'16"E
L2	70.71'	N53°57'44"E
L3	21.21'	N36°02'16"W
L4	21.21'	S53°57'44"W
L5	4.00'	N8°57'44"E
L6	21.21'	N36°02'16"W
L7	21.21'	S53°57'44"W
L8	21.21'	N36°02'16"W
L9	21.21'	S53°57'44"W
L10	21.21'	S53°57'44"W
L11	21.21'	S36°02'16"E
L12	21.21'	N53°57'44"E
L13	21.21'	N36°02'16"W
L14	21.21'	S36°02'16"E
L15	21.21'	S53°57'44"W
L16	21.21'	S53°57'44"W
L17	21.21'	S36°02'16"E
L18	20.00'	N8°57'44"E
L19	17.00'	N8°57'44"E
L20	12.00'	N8°57'44"E
L21	10.00'	S8°57'44"W
L22	10.00'	S8°57'44"W
L23	70.71'	S36°02'16"E
L24	70.71'	N53°57'44"E

REVISION NOTES

NO.	SHEET	REVISION	DATE	APPROVED

SHEET 2 OF 5 SHEETS

FOR IRRIGATION PERMITTED ONLY. DATE: \_\_\_\_\_

DESIGNED BY: \_\_\_\_\_ DATE: \_\_\_\_\_

CHECKED BY: \_\_\_\_\_ DATE: \_\_\_\_\_

FINAL CHECK: \_\_\_\_\_ DATE: \_\_\_\_\_

