

Requisition

Req # 00175828

PO #

Date: 05/17/10

Bill To: x
x

Vendor: 42129
XEROX CORPORATION
P.O. BOX 650361
PNC BANK
1200 E CAMPBELL, STE 108
RICHARDSON TX 75081

Ship To: PURCHASING DEPARTMENT
100 E. CANO, 4TH FL
EDINBURG TX 78539

Contact: **Nielda Cavazos**
956-318-2626

Contract No: State PO

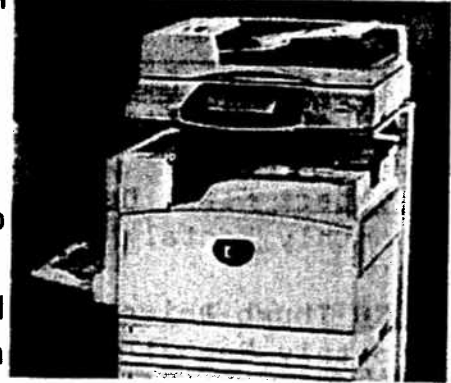
Special Instructions:

QUANTITY	UOM	DESCRIPTION	UNIT PRICE	AMOUNT
		State PO DO NOT DUPLICATE ORDER		
7.00	MONTH	Unit Commodity Code 9851356400-9 WorkCentre 7346P (Mid Range Ty) Equipment description 985-13-56001-5 monthly price 492.15	492.15	3,445.05
7.00	MONTH	cUST eD. CONSULTING (REQUIRED)	24.14	168.98
		Account No _____	<u>Encumbrance</u>	
		0-1100-415-18-160-001-0-780	3,614.03	
			Freight	.00
			Total	3,614.03
		REPORT ROAD HAZARDS 1-866-HCR-SAFE OR 1-866-427-7233		

Authorized By: _____

Xerox 985-L2 Rental Pricing

Xerox WorkCentre 7346P (Mid Range - TUN)
 45 black / white ppm digital copier
 40 color ppm digital copier



Printer with 520 Sheet Tray, 100 Sheet Bypass Tray, Data Security Kit, Job Acco Kit, STD Output tray, DADF, Nat kit, Speed Kit/ Name Plate Kit, Scanner Stand Network Drivers Kit and High Capacity Ta


(Required market codes: WC7345P, AYG)

Price includes
 10,000 B/W impressions
 all excess B/W prints at \$.0084 each
 4,100 Color impressions
 all excess Color prints at \$.0460 each

Equip Description/Qty	Monthly Base	Commodity Codes:
985-13-56001-5	\$	0.00
Monthly Rental	\$ 492.15	985-13-56400-9

← \$ 516.29 36 mo.

Cash Price
 \$ 18,586.44
 J.D.M
 5/14/10

Contract includes **xerox** 

- delivery & installation
- all supplies, except paper & specialty items

Xerox 985-L2 Rental Pricing

Optional Catalog Accessories for Networked Xerox WC7346P

	<u>Price</u>	<u>Commodity Code:</u>
<u>Cust Ed. / Consulting (required):</u>		
Monthly Rental 56417-3	* 24.14 ✓	985-13-
<u>Advanced Finisher:</u>		
Monthly Rental 56418-1	* 44.30	985-13-
<u>Office Finisher:</u>		
Monthly Rental 56419-9	* 25.31	985-13-
<u>Production Finisher:</u>		
Monthly Rental 56420-7	*104.42	985-13-
<u>3 Line Fax and iFax Kit:</u>		
Monthly Rental 56421-5	* 47.31	985-13-
<u>EFI Fiery Network Server:</u>		
Monthly Rental 56422-3	*110.69	985-13-
<u>EFI Hot Folder / Virtual Printers:</u>		
Monthly Rental 56423-1	* 31.48	985-13-
<u>EFI IMPOSE 2.7 Kit:</u>		
Monthly Rental 56424-9	* 71.20	985-13-
<u>EFI Spot On Kit:</u>		
Monthly Rental 56425-6	* 31.48	985-13-
<u>EFI Auto Trap Kit:</u>		
Monthly Rental 56426-4	* 31.48	985-13-
<u>Secure Access s/w w/Mag Stripe Reader:</u>		
Monthly Rental 56427-2	* 33.73	985-13-
<u>Secure Access s/w w/MiFare Reader :</u>		
Monthly Rental 56428-0	* 37.71	985-13-
<u>sFax Enablement Kit:</u>		
Monthly Rental 56429-8	* 25.16	985-13-
<u>Scan to PC Desktop PRO V9.0 - 25 Seats:</u>		
Monthly Rental 56430-6	* 66.88	985-13-
<u>Scan to PC Desktop V9.0 - 25 Seats :</u>		
Monthly Rental 56431-4	* 13.18	
<u>SMARTSEND 2.1:</u>		



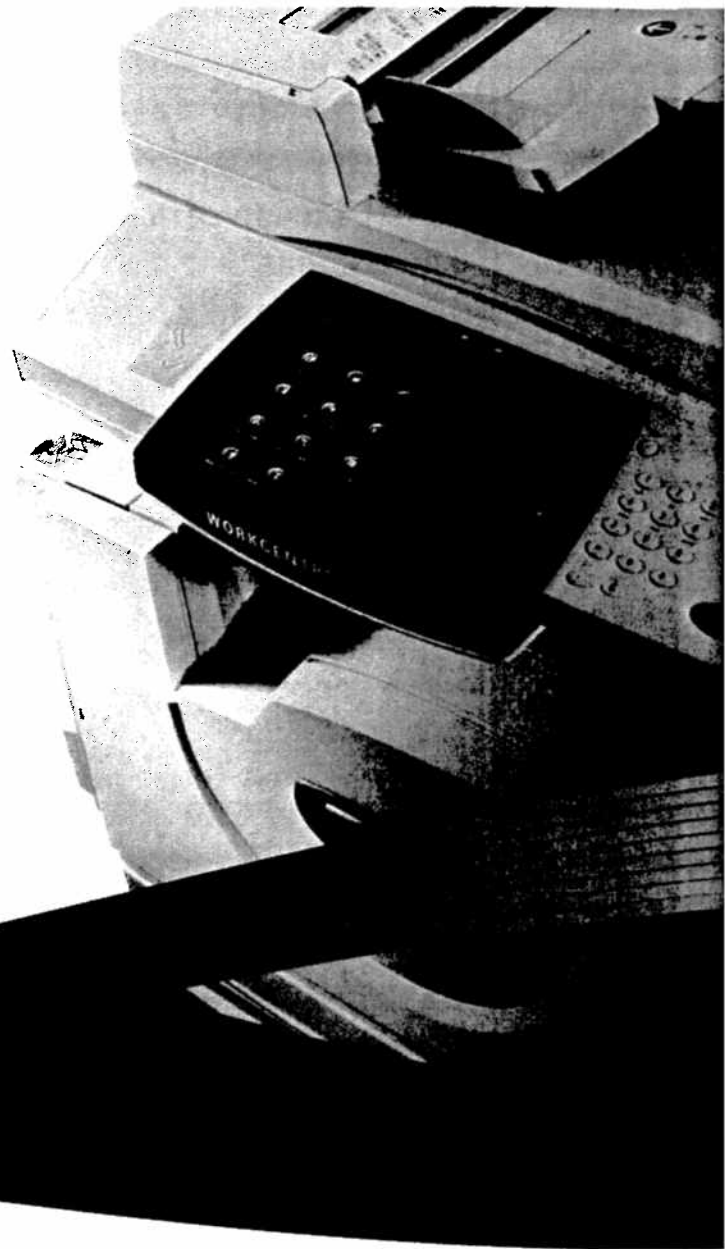
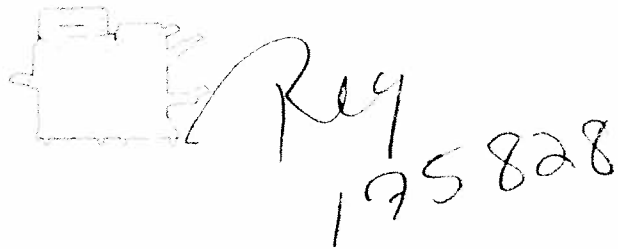
WorkCentre®

7328 / 7335 / 7345 / 7346

tabloid-size

color

multifunction



WorkCentre®

7328 / 7335 / 7345 / 7346

Multifunction Printer

Powerful office features

plus the advantage of color

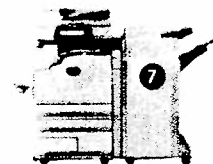
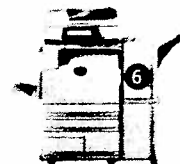
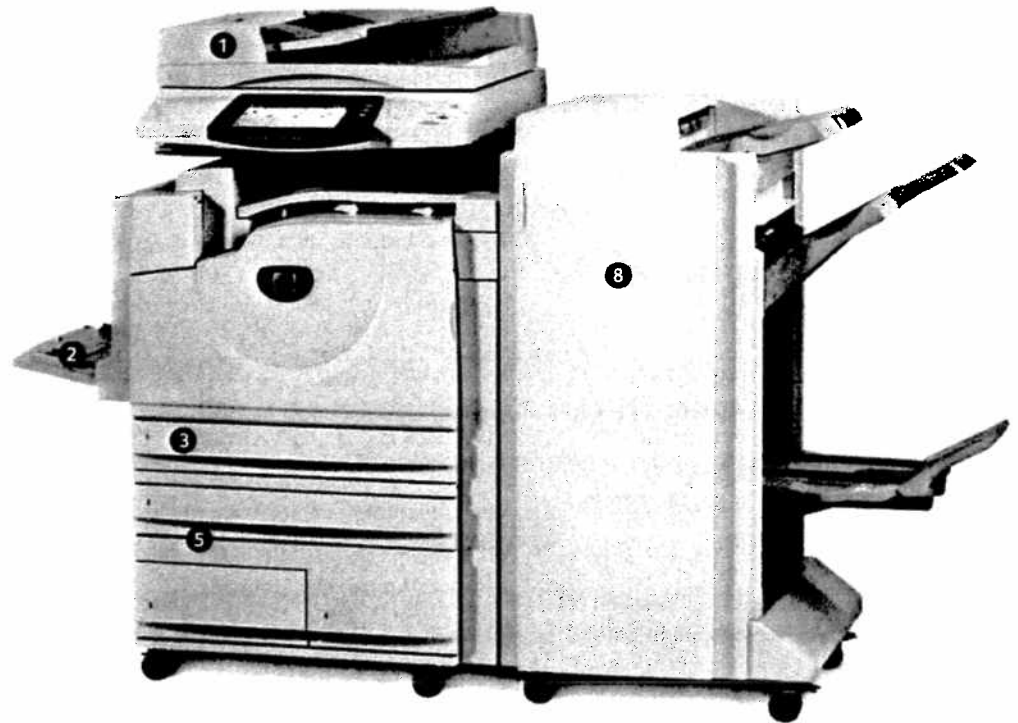


Paper input

- 1 75 sheet Duplex Automatic Document Feeder quickly processes single- or double-sided originals.
- 2 100 sheet Bypass Tray (adjustable to 12 x 18 in.)
- 3 520 sheet tray (adjustable to 11 x 17 in.)
- 4 Three-Tray Option provides three additional 11 x 17 in. trays (not shown).
- 5 High Capacity Tandem Tray Option adds one 520 sheet 11 x 17 in. tray, one 800 sheet 8.5 x 11 in. tray and one 1,200 sheet 8.5 x 11 in. tray.

Finishing options

- 6 Office Finisher adds 50 sheet multiposition stapling.
- 7 Advanced Office Finisher adds 50 sheet multiposition stapling and hole punch.
- 8 Professional Finisher adds 50 sheet multiposition stapling, hole punch, V-fold and saddle-stitch booklet making.



WorkCentre 7300 Series				Options
<p>WorkCentre 7328</p> <ul style="list-style-type: none"> • Up to 28 ppm black and white • 26 ppm color • 1 GB memory plus 40 GB hard drive • Ethernet connectivity 	<p>WorkCentre 7335</p> <ul style="list-style-type: none"> • Up to 35 ppm black and white • 31 ppm color • 1 GB memory plus 40 GB hard drive • Ethernet connectivity 	<p>WorkCentre 7345</p> <ul style="list-style-type: none"> • Up to 45 ppm black and white • 35 ppm color • 1 GB memory plus 40 GB hard drive • Ethernet connectivity 	<p>WorkCentre 7346</p> <ul style="list-style-type: none"> • Up to 45 ppm black and white • 40 ppm color • 1.5 GB memory plus 40 GB hard drive • Ethernet connectivity 	<ul style="list-style-type: none"> • Scan kit • WakeUp fax with Internet fax • Network server fax • Stapling, hole punching and booklet making • Additional tray options • FF Easy Network Controller

Easy device management

The WorkCentre 7300 series comes with the tools IT managers need for fast deployment and easy support.

- CentreWare[®] IS Embedded Web Server automates installation, troubleshooting, cloning and upgrading, providing virtually effortless device management.
- CentreWare Web software manages an entire enterprise-wide print environment — regardless of manufacturer mix — and helps ensure all devices run smoothly and reliably.
- Smart eSolutions simplifies ownership with hands-free, hassle-free secure administration of Xerox devices.



Color workflows, optimized

Add an EFI Fiery System 8e[®] Network Controller to the WorkCentre 7300 series and get a wealth of easy-to-use color management controls, powerful productivity features, and superior workflow tools. It's the ideal combination to take your in-house graphic arts capabilities to the next level.

The EFI Fiery Network Controller adds these features:

- True 600 x 600 x 8 dpi print resolution for outstanding detail and clarity.
- PANTONE[®] Color Calibrated certification ensures you get precise colors, every time.
- Fiery ColorWise[®] offers standard-setting color tools and user flexibility.
- A 2.8 GHz processor and 512 MB memory deliver the power to handle even the most complex print jobs.
- EFI Command WorkStation makes it easy to program, monitor and manage your office workflows.
- The Fiery RIP-and-Print utility streamlines the print-job processing in office environments.

Powerful scanning, simplified

Cutting-edge solutions help you seamlessly create and distribute business-critical color documents to increase productivity and reduce costs.

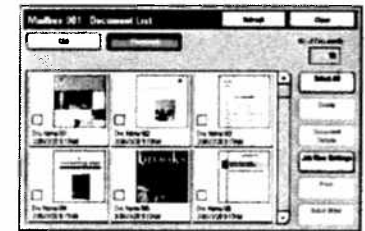
• Store on the device

Scan to Mailbox

Stores scanned documents and documents sent from a PC to the device hard drive for easy retrieval or reporting.

View Stored Files

View thumbnail preview of documents stored in the mailbox — both at the device front panel (optional) and from your desktop.



• Routing made easy

Scan to Email

Sends scans to email recipients directly from the front panel.

Network Scanning

Uses templates to send scans to predefined locations.

Job Flow Sheets

Enables simple workflows on the device for documents sent to or stored in the mailbox.

Scan to PC

Scans a file to an existing shared folder on a PC.

Scan to Home

Scans files to preassigned "home" destinations for fast routing.

• Repurposing documents

Scan to PC Desktop[®]

Provides helpful tools for editing and document manipulation.

• Deliver files faster

Advanced Compression Technology

Compresses file size for fast delivery and reduced network load.

• Convert Documents

Multiple Formats

Scans can be saved in PDF, TIFF, mPDF, JPEG or XPS[®] format.

Scan to Searchable PDF

Converts hard copy documents to text-searchable PDFs.

Access and print information without the use of a computer

Need your company's latest price list or a brochure on this week's hottest-selling product? Simply use the touch screen on your WorkCentre to browse an online repository such as Xerox DocuShare®, Microsoft SharePoint® or Windows folders, select the document, and print it. This is ideal for industries such as Retail or locations like a Health Care facility where PCs are not required for each employee. It also eliminates filing cabinets filled with material that quickly becomes outdated.

Simply scan information and store it exactly where you want it

Transform hard copy forms into archived digital information with just a few simple steps. A new patient fills out a medical history form, the receptionist securely scans the form, previews a thumbnail image on the touch screen, and then sends the form to a folder named Patient Records. EIP-enabled applications make it possible.

Control costs with user-friendly accounting

With Xerox accounting solutions you can set usage limits by individual and by function. Track device usage through a printed report, file download, or integration with a partner accounting solution.

Convenient and secure access with a simple swipe of your ID card

Xerox makes it easy for you to ensure that only authorized users access your WorkCentre devices by requiring passwords or access cards. Once authenticated, you can access EIP-enabled applications that are personalized to meet your needs.



Simplify complex fax distributions

Send and receive faxes even when a fax board has not been installed in the device. Faxes can be scanned in at the device or submitted from a user's desktop using a fax print driver. Faxes can be tracked and audited to ensure regulatory compliance.

Advanced partner solutions created with your business in mind

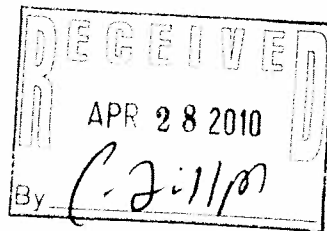
Xerox EIP enables an array of Business Partner solutions that extend the value of your WorkCentre multifunction device with advanced accounting, faxing and scanning capabilities.





Xerox Capital Services, LLC
 P.O. Box 660502
 Dallas, TX 75266

April 21, 2010



1216-001
 COUNTY OF HIDALGO
 STE 281
 2812 S BUS HWY
 EDINBURG TX 78539

Second Request: Your Purchase Order Is Expiring

Dear Valued Xerox Customer:

We have not received your purchase order for the upcoming fiscal year. Your prompt attention to this matter will ensure continued Xerox service on your account. You can submit your authorized copy using one of the four options below.

- On-line: www.XEROX.com/porenewal
- Email: Public.Sector.PO.Renewal@xerox.com
- Fax: 888-708-6555
- US Mail: Use P.O. Box address listed above

To streamline acceptance of your purchase order, ensure these six elements are clearly identified:

- Monthly Minimum (Base) Charge
- Excess Meter Click Rate
- Contract Number (if applicable)
- Xerox Equipment Serial Number
- Period of Performance (eg. 07/01/XX - 06/30/XX)
- Authorized Signature

Do you need to make changes to your purchase order requirements or government credit card? Contact us directly at 866-520-7628. **THANK YOU** for your continued business. We look forward to serving you in the new fiscal year.

Sincerely,

Mike Shay
 Xerox Capital Services



**Purchasing Agents,
 Time is Running Out
 Renew Your Purchase Order Now**

Contracting Officer:

PO Number:
 134848/C1080-7-924

PO Expiration Date: 04/30/2010

Market Code: WCP255H
Serial Number: UTV866385

Machine Located at:
 COUNTY OF HIDALGO
 STE 281
 2812 S BUS HWY
 EDINBURG TX
 78539

AP 5/15/10