

EXHIBIT "A"

LOT 5, BLOCK 28
ALAMO LAND AND SUGAR CO. SUBDIVISION
VOL. I, PG. 24-26, M.R.H.C.

Scale 1" = 100'

OWNER: LOU ANNE STIERS BELL
AND CINDY STIERS NORDMEYER
GIFT DEED
VOL. 2759, PG. 766, O.R.H.C.
WARRANTY DEED
DOC. No. 881649, O.R.H.C.

OWNER: LOU ANNE STIERS BELL
AND CINDY STIERS NORDMEYER
GIFT DEED
VOL. 2759, PG. 766, O.R.H.C.
WARRANTY DEED
DOC. No. 881649, O.R.H.C.

OWNER: LOU ANNE STIERS BELL
AND CINDY STIERS NORDMEYER
GIFT DEED
VOL. 2759, PG. 766, O.R.H.C.
WARRANTY DEED
DOC. No. 881649, O.R.H.C.

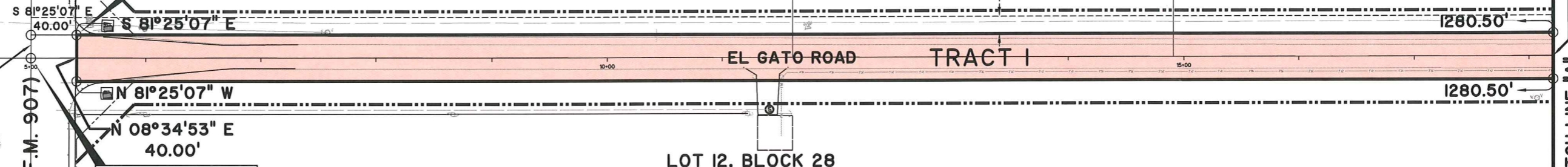
EXIST. 15.00'
TOTAL EBP USA, INC.
PIPELINE ESMT.
DOC. 726369, O.R.H.C.
DOC. 1480211, O.R.H.C.

LOT 6, BLOCK 28
ALAMO LAND AND SUGAR CO. SUBDIVISION
VOL. I, PG. 24-26, M.R.H.C.

OWNER: WILLIAM R. MACDONALD AKA
WILLIAM R. MACDONALD JR.
SPECIAL WARRANTY DEED W/VENDOR'S LIEN
VOL. 2455, PG. 536, O.R.H.C.
DECREE OF DIVORCE
CAUSE No. C-3273-90-D

LOT II, BLOCK 28
ALAMO LAND AND SUGAR CO. SUBDIVISION
VOL. I, PG. 24-26, M.R.H.C.

ALAMO ROAD (F.M. 907)







BEGINNING TRACT I

COMMENCING TRACT I
S.W. Corner Lot 5, Block 28,
N.W. Corner Lot 12, Block 28,
Alamo Land and Sugar Co's.
Subdivision,
Vol. I, Pgs. 24-26, D.R.H.C.

LOT 12, BLOCK 28
ALAMO LAND AND SUGAR CO. SUBDIVISION
VOL. I, PG. 24-26, M.R.H.C.

EXHIBIT OF
EXISTING CITY OF ALAMO ROAD
RIGHT OF WAY (EL GATO ROAD)
BEING A 2.254-ACRE TRACT OF LAND COMPRISED OF:
TRACT I: A 1.176-ACRE TRACT OUT OF LOTS 5 AND 12,
ALAMO LAND AND SUGAR COMPANY'S SUBDIVISION,
HIDALGO COUNTY, TEXAS.
VOLUME I, PAGES 24-26, M.R.H.C.
TRACT II: A 0.786-ACRE TRACT OUT OF SABAL PALMS PHASE I,
HIDALGO COUNTY, TEXAS.
VOL. 48, PG. 33, M.R.H.C.

AND
TRACT III: A 0.292-ACRE TRACT
OUT OF LOT 8, BLOCK 29,
ALAMO LAND AND SUGAR COMPANY'S SUBDIVISION,
HIDALGO COUNTY, TEXAS.
VOLUME I, PAGES 24-26, M.R.H.C.

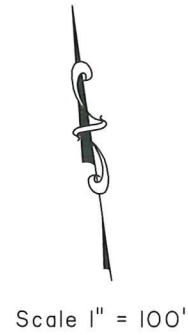
-  CITY OF ALAMO LIMITS
-  EL GATO R.O.W. INSIDE CITY OF ALAMO LIMITS
-  EL GATO R.O.W. INSIDE CITY OF ALAMO & ADJACENT TO PSJA ISD PROPERTY
-  EL GATO R.O.W. INSIDE HIDALGO COUNTY LIMITS

MATCH LINE "A"



Professional Engineers & Land Surveyors
130 E. PARK AVENUE • PHARR, TEXAS 78577
(TEL) 956 782-2557 • (FAX) 956 782-2558
FIRM No. 486

LOT 8, BLOCK 29
ALAMO LAND AND SUGAR CO. SUBDIVISION
VOL. I, PG. 24-26, M.R.H.C.



OWNER: JMP GROUP, INC.
WARRANTY DEED WITH VENDOR'S LIEN
DOC. No. 1271914, O.R.H.C.

EXIST. 15.00'
TOTAL E&P USA, INC.
PIPELINE ESMT.
DOC. 726367, O.R.H.C.
DOC. 1480211, O.R.H.C.

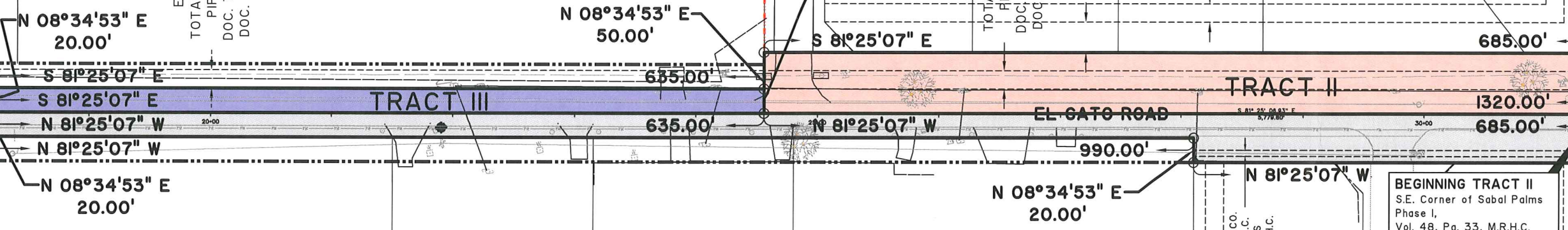
SABAL PALMS SUBDIVISION PHASE I
VOL. 48, PG. 33, M.R.H.C.

EXIST. 15.00'
TOTAL E&P USA, INC.
PIPELINE ESMT.
DOC. 726367, O.R.H.C.
DOC. 1480211, O.R.H.C.

EXIST. 25.00'
SWALE ESMT.
5
EXIST. 15.00'
UTIL. ESMT.

MATCH LINE "A"

MATCH LINE "B"



LOT 9, BLOCK 29
ALAMO LAND AND SUGAR CO. SUBDIVISION
VOL. I, PG. 24-26, M.R.H.C.

EXIST. 5.00'
VALLEY INDUSTRIAL GAS CO.
VOL. 956, PG. 432, D.R.H.C.
COASTAL ESTATES GAS
VOL. 1004, PG. 425, D.R.H.C.

PUEBLO SUBDIVISION
VOL. 32, PG. 35, M.R.H.C.

BEGINNING TRACT II
S.E. Corner of Sabal Palms
Phase I,
Vol. 48, Pg. 33, M.R.H.C.

16
EXIST. 10.00'
UTIL. ESMT.

EXIST. 25.00'
DRAINAGE
SWALE ESMT.
15

EXHIBIT OF
EXISTING HIDALGO COUNTY ROAD RIGHT OF WAY
(EL GATO ROAD)
BEING A 3.022-ACRE TRACT OF LAND
OUT OF LOTS 7, 8, & 9, BLOCK 29,
ALAMO LAND AND SUGAR COMPANY'S SUBDIVISION,
HIDALGO COUNTY, TEXAS.
VOLUME I, PAGES 24-26, M.R.H.C.,
SAMANTHA LEE SUBDIVISION, VOL. 47, PG. 113, M.R.H.C.,
INCA SUBDIVISION, VOL. 32, PG. 35, M.R.H.C., AND
PUEBLO SUBDIVISION, VOL. 30, PG. 192A, M.R.H.C.

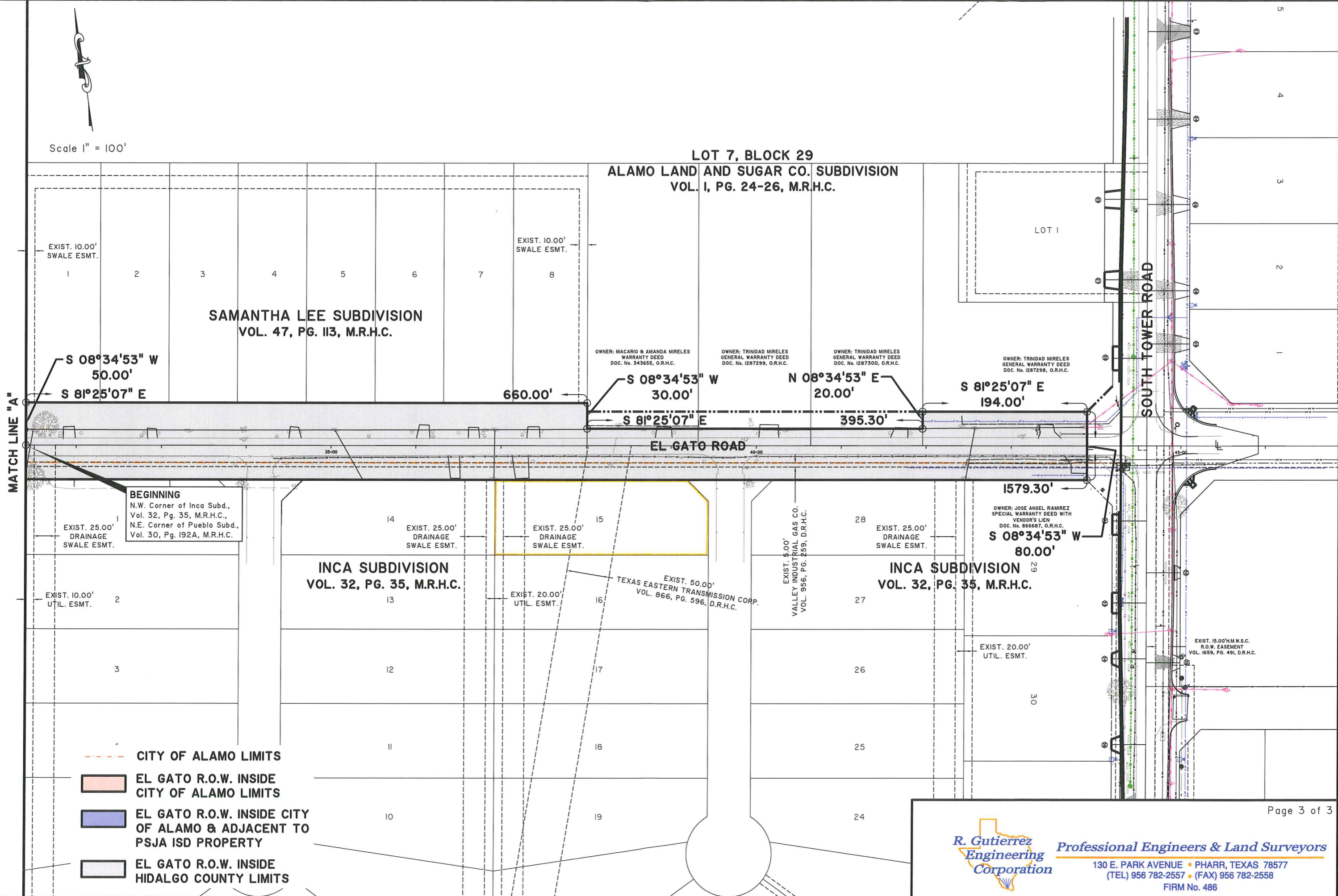
- CITY OF ALAMO LIMITS
- EL GATO R.O.W. INSIDE CITY OF ALAMO LIMITS
- EL GATO R.O.W. INSIDE CITY OF ALAMO & ADJACENT TO PSJA ISD PROPERTY
- EL GATO R.O.W. INSIDE HIDALGO COUNTY LIMITS

Page 2 of 3

**R. Gutierrez
Engineering
Corporation**





Professional Engineers & Land Surveyors
130 E. PARK AVENUE • PHARR, TEXAS 78577
(TEL) 956 782-2557 • (FAX) 956 782-2558
FIRM No. 486

Scale 1" = 100'



MATCH LINE "A"

BEGINNING
N.W. Corner of Inca Subd.,
Vol. 32, Pg. 35, M.R.H.C.,
N.E. Corner of Pueblo Subd.,
Vol. 30, Pg. 192A, M.R.H.C.

-  CITY OF ALAMO LIMITS
-  EL GATO R.O.W. INSIDE CITY OF ALAMO LIMITS
-  EL GATO R.O.W. INSIDE CITY OF ALAMO & ADJACENT TO PSJA ISD PROPERTY
-  EL GATO R.O.W. INSIDE HIDALGO COUNTY LIMITS



Professional Engineers & Land Surveyors
130 E. PARK AVENUE • PHARR, TEXAS 78577
(TEL) 956 782-2557 • (FAX) 956 782-2558
FIRM No. 486