



Lower Rio Grande Valley Development Council

Commissioner John Ingram, McAllen.....President
 Mayor Chris Boswell, Harlingen.....1st Vice-President
 Mayor Pro-Tem Alvin Samano, Member-at-Large..... 2nd Vice-President
 Honorable Norma G. Garcia, Member-at Large..... Secretary
 Mayor Pro-Tem Eddy Gonzalez, City of Edcouch.....Treasurer
 Arturo Ramirez, Grassroots Organizations Immediate Past President

BOARD MEMBERS

Sofia Benavidez
 Commissioner, Cameron County

Hector "Tito" Palacios
 Commissioner, Hidalgo County

Aurelio Guerra
 Commissioner, Willacy County

Roel Landa
 Commissioner, Alamo

Edward C. Camarillo
 Mayor Pro-Tem, Brownsville

David S. Simmons
 Mayor, Donna

Gus Garcia
 Council Member, Edinburg

Steve Brewer
 Mayor, La Feria

Joel Quintanilla
 Mayor, Mercedes

Norberto "Beto" Salinas
 Mayor, Mission

Leo "Polo" Palacios, Jr.
 Mayor, Pharr

Orlando Correa
 Mayor, Raymondville

Joe Hernandez
 Mayor, San Benito

Lupe Rodriguez
 Mayor Pro-tem, San Juan

Buddy De La Rosa
 Mayor, Weslaco

Dr. Cesar Maldonado
 President, TSTC, Harlingen

Roberto Loreda
 Donna I.S.D.

Gale Armstrong
 El Jardin Water Supply

Michael G. Wilson
 Willacy Navigation District

Don Medina
 Member-At-Large

EXECUTIVE DIRECTOR
 Kenneth N. Jones, Jr.



FAX TRANSMISSION

To: COMMISSIONER, JOE M. FLORES
From: JUAN TORRES

Fax: (956) 585-2375
Phone: (956) 682-3481 Ext 169

Phone: (956) 585-4509
Date: APRIL 1, 2011

Re: INFORMATION
CC:

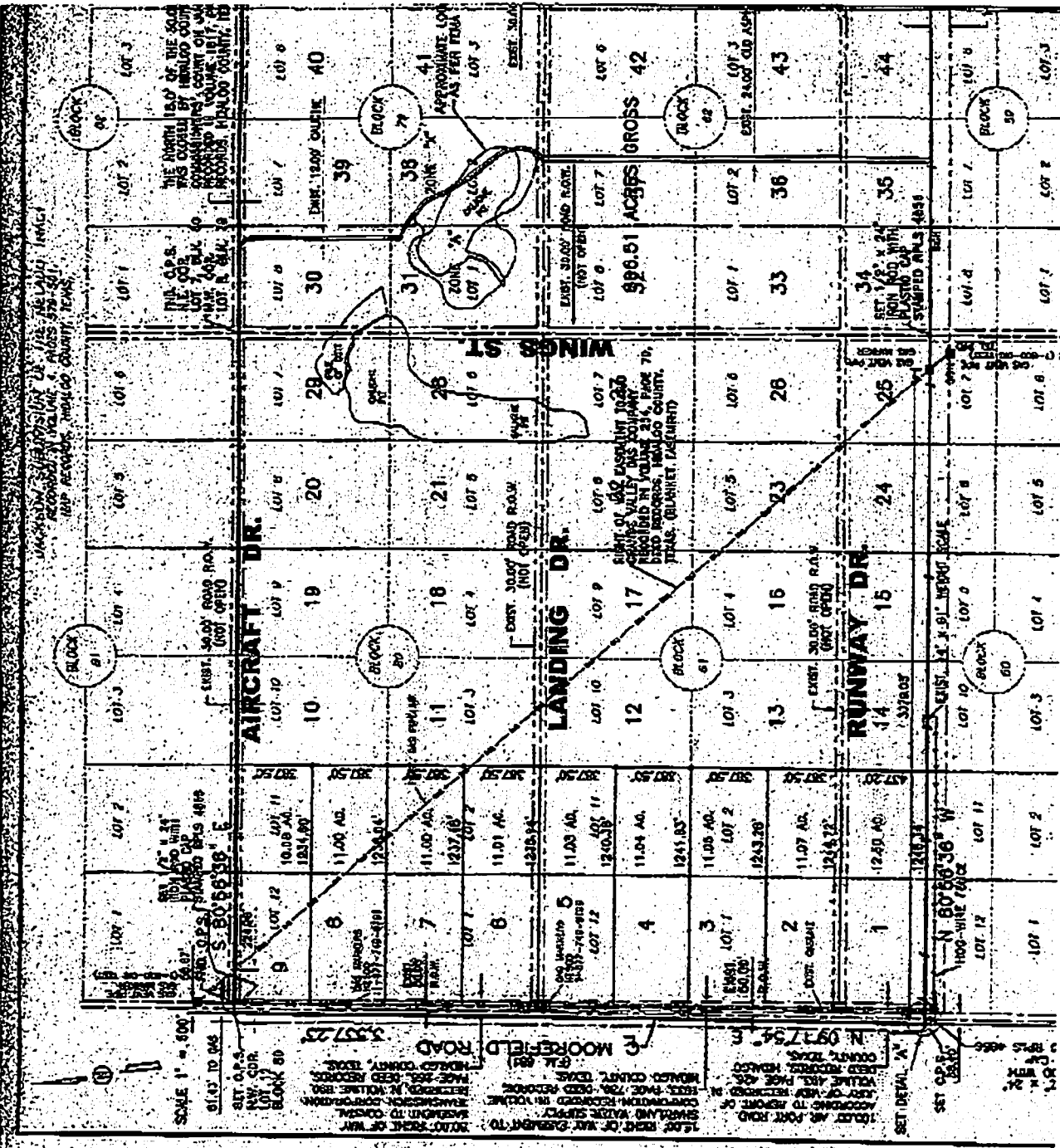
Urgent For Review Please Comment Please Reply

MR. FLORES:

A NEW DEVELOPMENT LOCATED ACROSS THE ROAD FROM MOORE AIR BASE ON MOOREFIELD RD NEEDS STREET NAMES. WE ARE SUBMITTING THESE NAMES FOR YOUR REVIEW & APPROVAL. WE ARE PROPOSING THE NAMES AS SHOWN:

<i>AIRCRAFT DR</i>	<i>WINGS ST</i>
<i>LANDING DR</i>	<i>HANGAR ST</i>
<i>RUNWAY DR</i>	<i>JET ST</i>

SEE ATTACHED PLAT. PLEASE CALL ME, IF YOU HAVE ANY QUESTIONS. THANKS

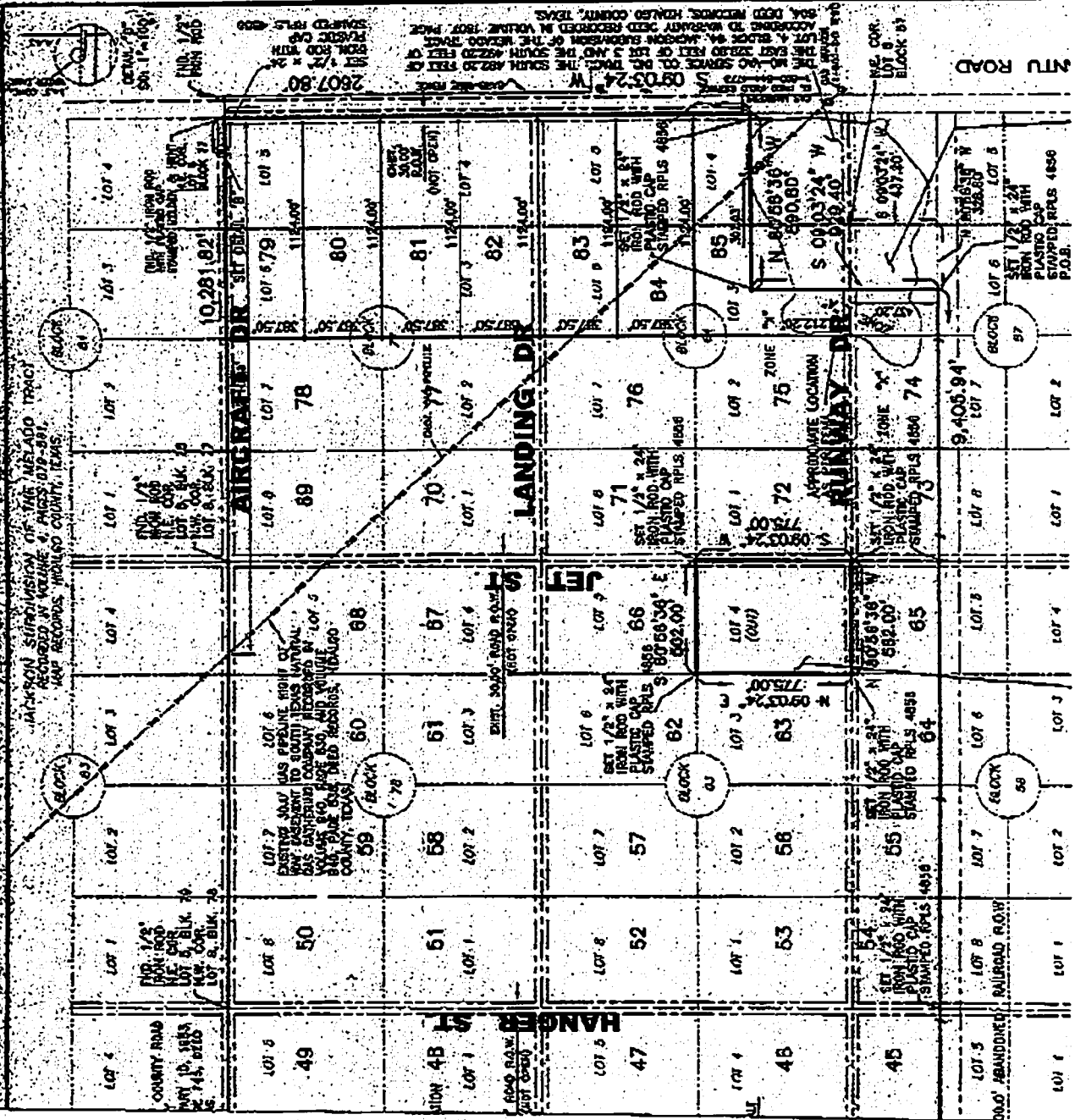


1/2007 LEGAL MAP OF THE NORTH HALF OF THE SOUTH 1/4 SECTION 30, T12N, R10E, S10E, HARRIS COUNTY, TEXAS. APPROXIMATE LOT AREA PER TRACT AS PER TRACT MAP.

1/2007 LEGAL MAP OF THE SOUTH HALF OF THE SOUTH 1/4 SECTION 30, T12N, R10E, S10E, HARRIS COUNTY, TEXAS. APPROXIMATE LOT AREA PER TRACT AS PER TRACT MAP.

1/2007 LEGAL MAP OF THE WEST HALF OF THE SOUTH 1/4 SECTION 30, T12N, R10E, S10E, HARRIS COUNTY, TEXAS. APPROXIMATE LOT AREA PER TRACT AS PER TRACT MAP.

1/2007 LEGAL MAP OF THE EAST HALF OF THE SOUTH 1/4 SECTION 30, T12N, R10E, S10E, HARRIS COUNTY, TEXAS. APPROXIMATE LOT AREA PER TRACT AS PER TRACT MAP.



NTU ROAD

2807.80

0903'24" W

LOT 8
LOT 6
BLOCK 81

LOT 1
LOT 2
LOT 3
LOT 4
LOT 5
LOT 6
LOT 7
LOT 8
LOT 9
LOT 10
LOT 11
LOT 12
LOT 13
LOT 14
LOT 15
LOT 16
LOT 17
LOT 18
LOT 19
LOT 20
LOT 21
LOT 22
LOT 23
LOT 24
LOT 25
LOT 26
LOT 27
LOT 28
LOT 29
LOT 30
LOT 31
LOT 32
LOT 33
LOT 34
LOT 35
LOT 36
LOT 37
LOT 38
LOT 39
LOT 40
LOT 41
LOT 42
LOT 43
LOT 44
LOT 45
LOT 46
LOT 47
LOT 48
LOT 49
LOT 50
LOT 51
LOT 52
LOT 53
LOT 54
LOT 55
LOT 56
LOT 57
LOT 58
LOT 59
LOT 60
LOT 61
LOT 62
LOT 63
LOT 64
LOT 65
LOT 66
LOT 67
LOT 68
LOT 69
LOT 70
LOT 71
LOT 72
LOT 73
LOT 74
LOT 75
LOT 76
LOT 77
LOT 78
LOT 79
LOT 80
LOT 81
LOT 82
LOT 83
LOT 84
LOT 85
LOT 86
LOT 87
LOT 88
LOT 89
LOT 90
LOT 91
LOT 92
LOT 93
LOT 94
LOT 95
LOT 96
LOT 97

BLOCK 81

BLOCK 78

BLOCK 77

BLOCK 76

BLOCK 75

BLOCK 74

BLOCK 73

BLOCK 72

BLOCK 71

BLOCK 70

BLOCK 69

BLOCK 68

BLOCK 67

BLOCK 66

BLOCK 65

BLOCK 64

BLOCK 63

BLOCK 62

BLOCK 61

BLOCK 60

BLOCK 59

BLOCK 58

BLOCK 57

BLOCK 56

BLOCK 55

BLOCK 54

BLOCK 53

BLOCK 52

BLOCK 51

BLOCK 50

BLOCK 49

BLOCK 48

BLOCK 47

BLOCK 46

BLOCK 45

BLOCK 44

BLOCK 43

BLOCK 42

BLOCK 41

BLOCK 40

BLOCK 39

BLOCK 38

BLOCK 37

BLOCK 36

BLOCK 35

BLOCK 34

BLOCK 33

BLOCK 32

BLOCK 31

BLOCK 30

BLOCK 29

BLOCK 28

BLOCK 27

BLOCK 26

BLOCK 25

BLOCK 24

BLOCK 23

BLOCK 22

BLOCK 21

BLOCK 20

BLOCK 19

BLOCK 18

BLOCK 17

BLOCK 16

BLOCK 15

BLOCK 14

BLOCK 13

BLOCK 12

BLOCK 11

BLOCK 10

BLOCK 9

BLOCK 8

BLOCK 7

BLOCK 6

BLOCK 5

BLOCK 4

BLOCK 3

BLOCK 2

BLOCK 1

BLOCK 0

BLOCK -1

BLOCK -2

BLOCK -3

BLOCK -4

BLOCK -5

BLOCK -6

BLOCK -7

BLOCK -8

BLOCK -9

BLOCK -10