



Hidalgo County Head Start Program

Policy Council Consent Agenda

DATE: May 18, 2011

SUBJECT: Approval of the Post Learning Accomplishment Profile Diagnostic (LAP-D)

RATIONALE/NEED: The Learning Accomplishment Profile Diagnostic (LAP-D) is administered three (3) times during the school year. These are the post assessment results.

RECOMMENDATION: Administration recommends approval.

COST: N/A

RELATED INFORMATION INCLUDES: Post LAP-D Assessment Report

INITIATED BY: Nora S. Munoz, Assistant Program Director 

REVIEWED BY: Teresa Flores, Executive Director

EXECUTIVE DIRECTOR'S APPROVAL:


Teresa Flores

Agency Name: Hidalgo County Head Start

Head Start Outcomes Report for Hidalgo County Head Start

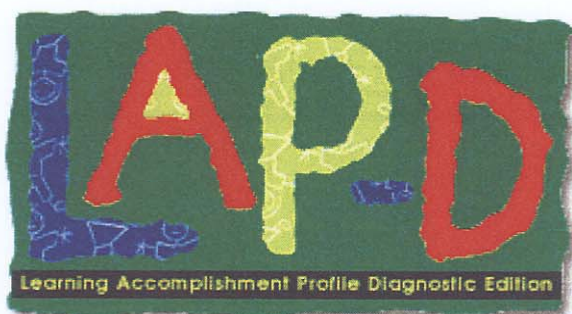
Based on Results From the LAP-D Assessment

Report Period: 08/16/2010 through 05/12/2011

Pre

Mid

Post



Head Start Child Outcome Framework:

Head Start programs must have in place an assessment system that not only measures and reports on a child's progress, but provides information useful for program planning and follow-up. As a standardized assessment instrument, the LAP-D measures children's developmental performance across four domains each containing two subscales and provides information concerning each child's developmental progress as compared to the normative sample. Two additional observation check-lists are included with the LAP-D for Personal/Social Development and Self-Help. The LAP-D provides information useful for measuring and reporting on a child's progress as well as aggregated data for program monitoring.

The following reports correlate the developmental milestones contained in the LAP-D to the Domains, Domain Elements, and Indicators from the Head Start Child Outcomes Framework. Selections were made based on the Domain, Domain Element and Indicator that most closely corresponded to the abilities of typically developing children at the developmental age for each milestone in the LAP-D. There are several instances in which specific milestone(s) could be associated with multiple indicators in the Outcomes Framework. For purposes of correlating the developmental milestones to the Outcomes Framework, we have kept items at a one-to-one association and matched the milestone to the indicator that best matches a child's ability at that age.

(The LAP-D does not measure progress towards listening, understanding and speaking English for non-English speaking children).

Tables 1 and 2 show the correspondence of the LAP-D to the Outcomes Framework. Legislatively, Head Start is required to collect and analyze data on thirteen specific Domain elements and/or indicators. Domains and/or Domain Elements containing these 13 items are denoted with an *.

Table 1

| <u>Domain</u> | <u># of Milestones</u> |
|-------------------------------|------------------------|
| Language Development * | 37 |
| Literacy * | 11 |
| Mathematics * | 52 |
| Science | 17 |
| Creative Arts | 3 |
| Social & Emotional | 35 |
| Approaches to Learning | 3 |
| Physical Health & Development | 168 |

Table 2 lists the Head Start Child Outcomes Framework, Domains, and Domain Elements and the individual LAP-D milestones associated with each Domain Element. Information contained in the LAP-D Milestone column refers to the LAP-D item number as shown in the scoring booklet

Table 2

| <u>Domain</u> | <u>Domain Element</u> | <u>LAP-D Milestone</u> |
|----------------------------------|-----------------------------------|---|
| Language Development | Listening and Understanding * | LC1,LC2,LC3,LC4,LC5,LC7,LC8,LC9,LC10,LC11,LC12,LC13 |
| | Speaking and Communicating * | LN1,LN2,LN3,LN4,LN5,LN6,LN7,LN8,LN9,LN10,LN11,LN13,LN14,LN23,LN24,LN25,LN26 |
| Literacy | Phonological Awareness * | CM24 |
| | Book Knowledge and Appreciation * | FM3,FM7,LN21,LC15 |
| | Print Awareness and Concepts * | LN30,LC23 |
| | Early Writing | FW2,FW20 |
| | Alphabet Knowledge * | LC22, LN27 |
| Mathematics | Number and Operations * | CC1,CC8,CC10,CC12,CC13,CC14,CC15,CC16,CC17,CC18 CC19,CC20,CC21,CC22,CC23,CC24,CC25,CC26,CC27 |
| | Geometry and Spatial Sense | FM17,FM18,FM20,FM21,FM23,CM5,CM6,CM7,CM12,CM16 |
| | Patterns and Measurement | CC3,CC6,CC7,CC11,CM3,CM10,CM21 |
| Science | Scientific Skills and Methods | CM8,CM9,CM19,LN19,LN28,LN29 |
| | Scientific Knowledge | FW13,FW15,FW21,FW23, FW25,CC30,CM15,LN15,LN16,LN17,LN20 |
| Creative Arts | Music | - |
| | Art | - |
| | Movement | PS40 |
| | Dramatic Play | PS2,PS23 |
| Social and Emotional Development | Self Concept | PS4,PS5,PS6,PS16,PS17,PS18,PS27,PS30,PS35 |
| | Self-Control | PS14,PS20,PS21,PS34 |

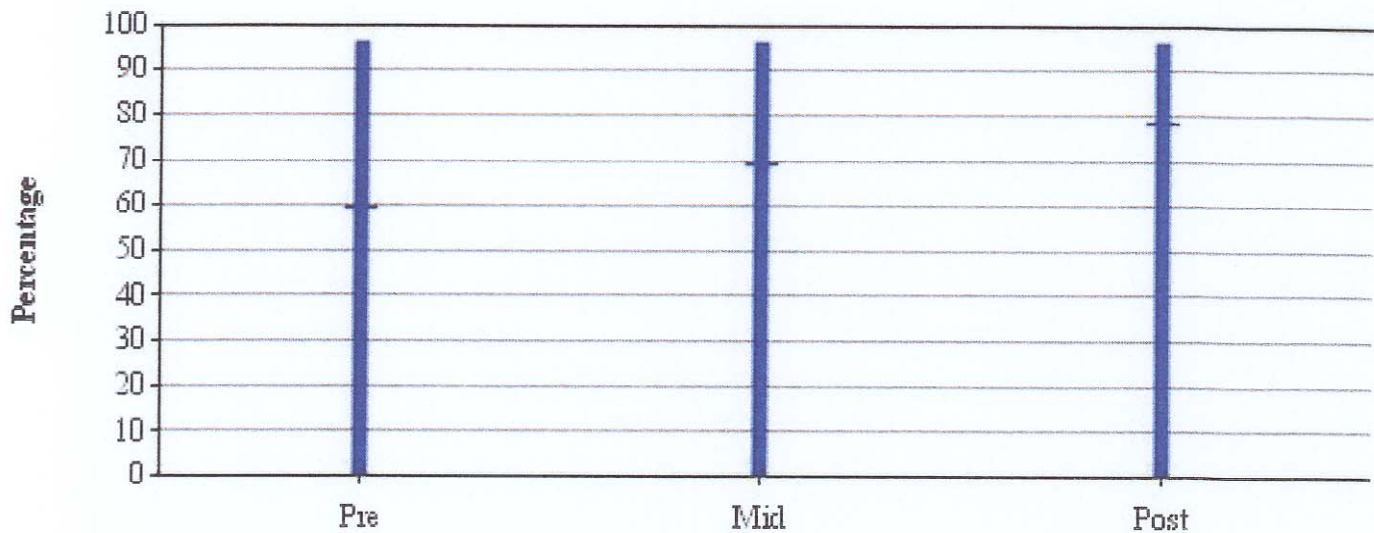
| <u>Domain</u> | <u>Domain Element</u> | <u>LAP-D Milestone</u> |
|----------------------------------|---------------------------------------|--|
| Social and Emotional Development | Cooperation | PS3,PS8,PS9,PS11,PS12,PS19,PS22,PS33,PS37,PS39 |
| | Social Relationships | PS1,PS10,PS24,PS25,PS31,PS32,PS36 |
| | Knowledge of Families and Communities | PS15,PS26,PS28,PS29,PS38 |
| Approaches to Learning | Initiative and Curiosity | LN12,LN18,LN22 |
| | Engagement and Persistence | - |
| | Reasoning and Problem Solving | - |
| Physical Health and Development | Fine Motor Skills | FM1,FM2,FM4,FM5,FM6,FM8,FM9,FM10,FM11,FM12 FM13,FM14,FM15,FM16,FM19,FM22,FM24,FM25,FM26 FM27,FM28,FW1,FW3,FW4,FW5,FW6,FW7,FW8,FW9 FW10,FW11,FW12,FW14,FW16,FW17,FW18,FW19 FW22,FW24,FW26,FW27,FW28,FW29,FW30,FW31 CC5,CM1,CM2,CM4,CM11,CM14 |
| | Gross Motor Skills | GB1,GB2,GB3,GB4,GB5,GB6,GB7,GB8,GB9,GB10,GB11 GB12,GB13,GB14,GB15,GB16,GB17,GB18,GB19,GB20 GB21,GB22,GB23,GB24,GB25,GB26,GB27,GB28,GB29 GB30,GB31,GB32,GB33,GB34,GO1,GO2,GO3,GO4 GO5,GO6,GO7,GO8,GO9,GO10,GO11,GO12,GO13 GO14,GO15,GO16,GO17,GO18,GO19,GO20,GO21 |
| | Health Status and Practices | SH1,SH2,SH3,SH4,SH5,SH6,SH7,SH8,SH9,SH10,SH11 SH12,SH13,SH14,SH15,SH16,SH17,SH18,SH19,SH20 SH21,SH22,SH23,SH24,SH25,SH26,SH27,SH28,SH29 SH30,SH31,SH32,SH33,SH34,SH35,SH36,SH37,SH38 SH39,SH40,SH41,SH42,SH43,SH44,SH45,SH46,SH47 SH48,SH49,SH50,SH51,SH52,SH53,SH54,SH55,SH56 SH57,SH58,SH59,SH60 |

Legend: FM Fine Motor: Manipulation GB Gross Motor: Body Movement
FW Fine Motor: Writing GOGross Motor: Object Movement
CM Cognitive: Matching PSPersonal/Social
CC Cognitive: Counting SHSelf-Help
LN Language: Naming
LC Language: Comprehension

The following report reflects the progress of children in the Head Start Domains at Hidalgo County Head Start over time.

Data is analyzed by comparing the number of milestones in each Domain mastered by each child in the program with the total number of potential milestones for that domain. Results are reflected over time showing the child's progress.

Domain: Language Development
 Domain Element: Listening and Understanding *
 Speaking and Communicating *



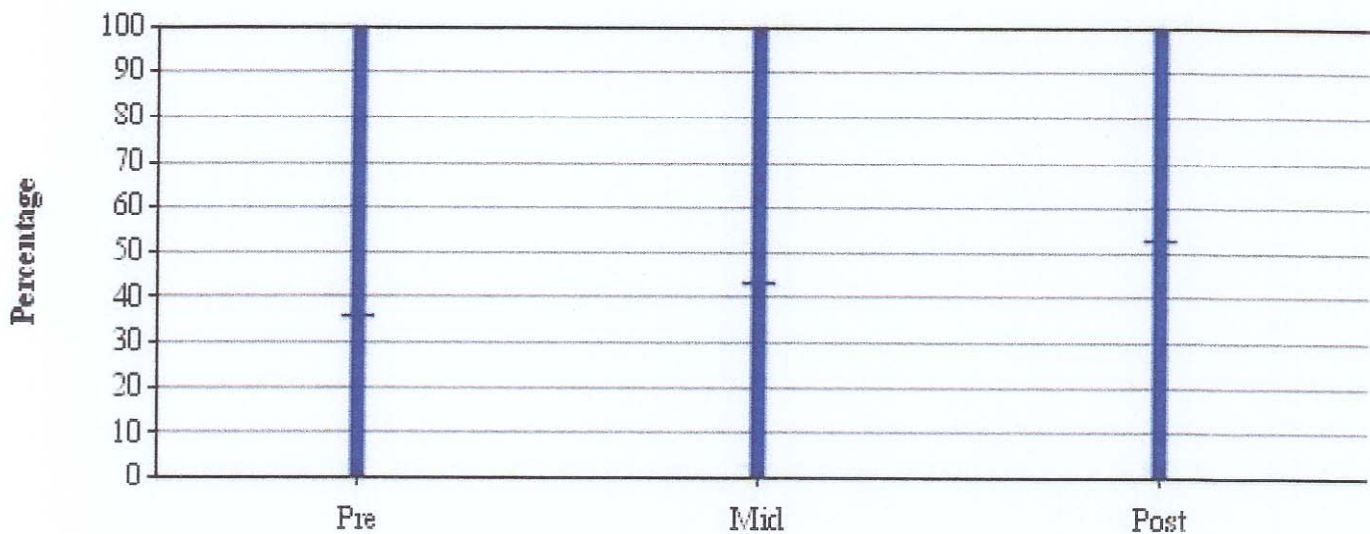
| | | | |
|--------------------|-------|-------|-------|
| Lowest Percentage | 0.00 | 0.00 | 0.00 |
| Program Average | 59.59 | 69.42 | 78.00 |
| Highest Percentage | 94.59 | 94.59 | 94.59 |

| | <u>Pre</u> | <u>Mid</u> | <u>Post</u> |
|-----------------------------|------------|------------|-------------|
| Number of Sites: | 43 | 43 | 43 |
| Number of Children | 3852 | 3584 | 3348 |
| Average | 59.59 | 69.42 | 78.00 |
| Avg. Percentage Gain <Loss> | | 9.83 | 8.58 |

The following report reflects the progress of children in the Head Start Domains at Hidalgo County Head Start over time.

Data is analyzed by comparing the number of milestones in each Domain mastered by each child in the program with the total number of potential milestones for that domain. Results are reflected over time showing the child's progress.

Domain: Literacy
 Domain Element: Phonological Awareness *
 Book Knowledge and Appreciation *
 Print Awareness and Concepts *
 Early Writing
 Alphabet Knowledge *



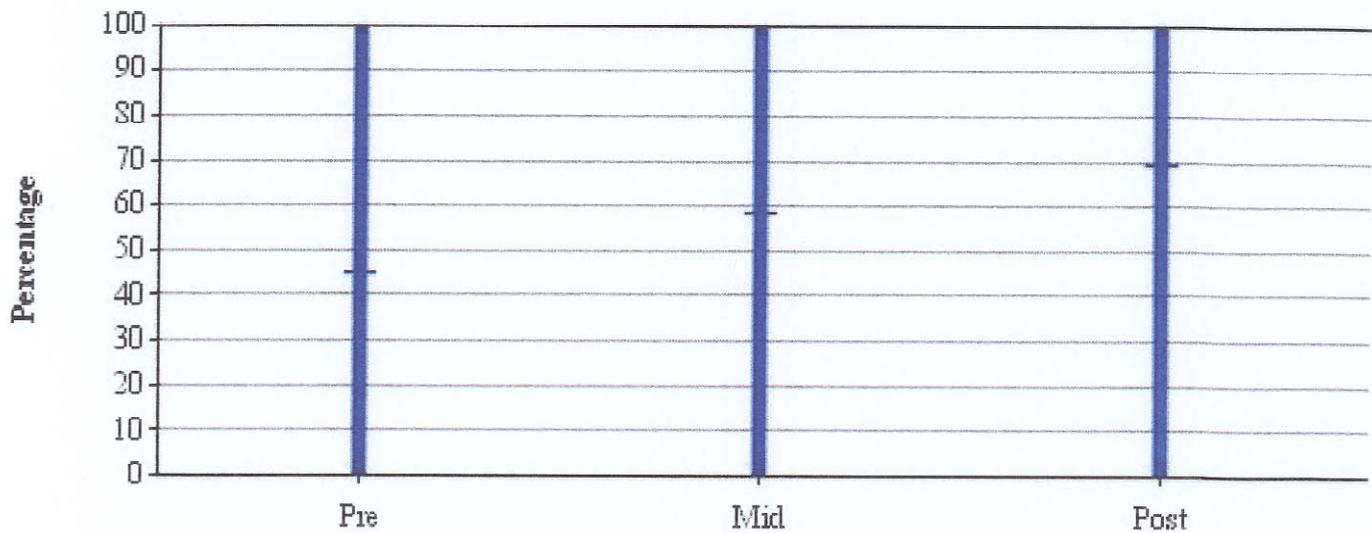
| | | | |
|--------------------|--------|--------|--------|
| Lowest Percentage | 0.00 | 0.00 | 0.00 |
| Program Average | 35.95 | 43.11 | 52.69 |
| Highest Percentage | 100.00 | 100.00 | 100.00 |

| | <u>Pre</u> | <u>Mid</u> | <u>Post</u> |
|-----------------------------|------------|------------|-------------|
| Number of Sites: | 43 | 43 | 43 |
| Number of Children | 3852 | 3584 | 3348 |
| Average | 35.95 | 43.11 | 52.69 |
| Avg. Percentage Gain <Loss> | | 7.16 | 9.58 |

The following report reflects the progress of children in the Head Start Domains at Hidalgo County Head Start over time.

Data is analyzed by comparing the number of milestones in each Domain mastered by each child in the program with the total number of potential milestones for that domain. Results are reflected over time showing the child's progress.

Domain: Mathematics
 Domain Element: Number and Operations *
 Geometry and Spatial Sense
 Patterns and Measurements



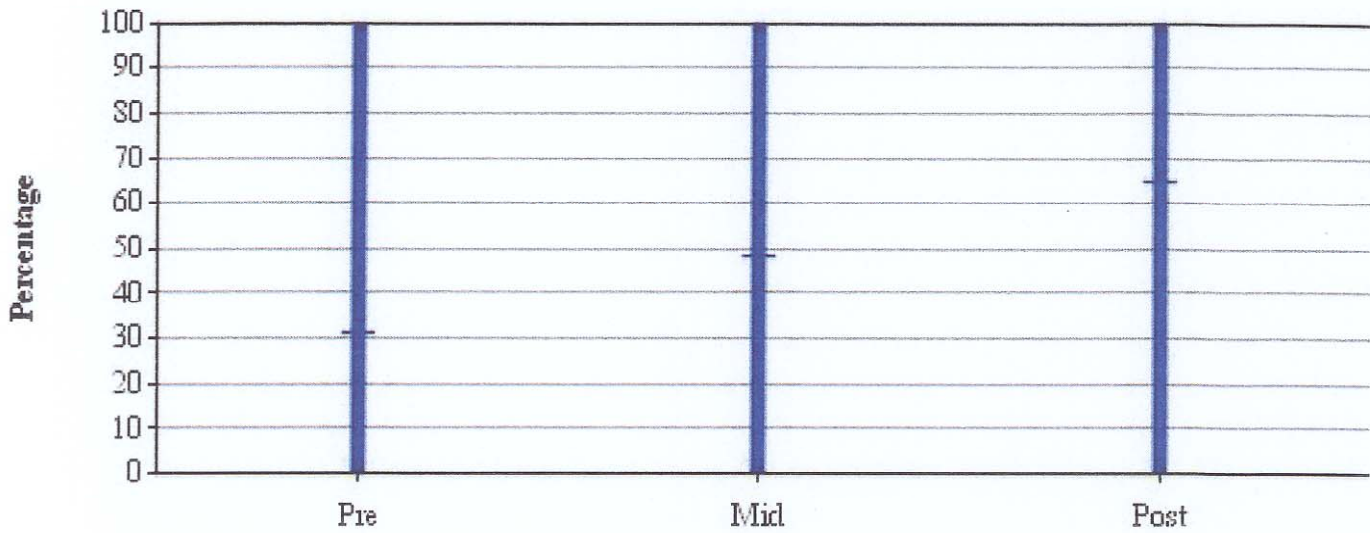
| | | | |
|--------------------|--------|--------|--------|
| Lowest Percentage | 0.00 | 0.00 | 0.00 |
| Program Average | 44.85 | 58.30 | 69.44 |
| Highest Percentage | 100.00 | 100.00 | 100.00 |

| | <u>Pre</u> | <u>Mid</u> | <u>Post</u> |
|-----------------------------|------------|------------|-------------|
| Number of Sites: | 43 | 43 | 43 |
| Number of Children | 3852 | 3584 | 3348 |
| Average | 44.85 | 58.30 | 69.44 |
| Avg. Percentage Gain <Loss> | | 13.45 | 11.14 |

The following report reflects the progress of children in the Head Start Domains at Hidalgo County Head Start over time.

Data is analyzed by comparing the number of milestones in each Domain mastered by each child in the program with the total number of potential milestones for that domain. Results are reflected over time showing the child's progress.

Domain: Science
 Domain Element: Scientific Skills and Methods
 Scientific Knowledge



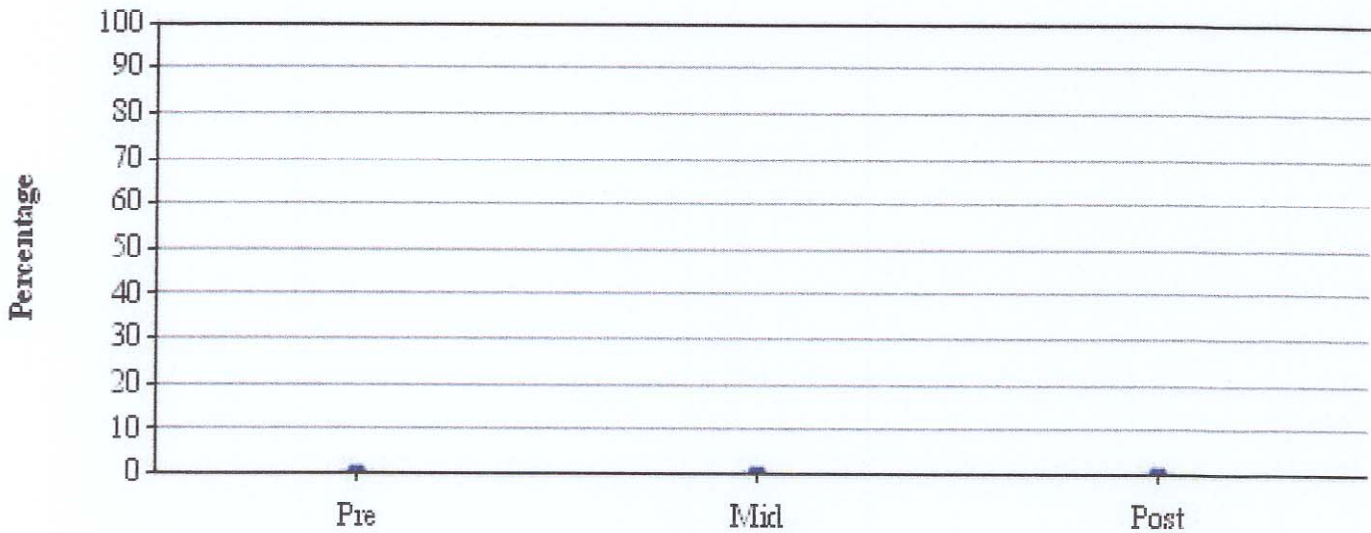
| | | | |
|--------------------|--------|--------|--------|
| Lowest Percentage | 0.00 | 0.00 | 0.00 |
| Program Average | 31.27 | 47.95 | 64.75 |
| Highest Percentage | 100.00 | 100.00 | 100.00 |

| | <u>Pre</u> | <u>Mid</u> | <u>Post</u> |
|-----------------------------|------------|------------|-------------|
| Number of Sites: | 43 | 43 | 43 |
| Number of Children | 3852 | 3584 | 3348 |
| Average | 31.27 | 47.95 | 64.75 |
| Avg. Percentage Gain <Loss> | | 16.68 | 16.80 |

The following report reflects the progress of children in the Head Start Domains at Hidalgo County Head Start over time.

Data is analyzed by comparing the number of milestones in each Domain mastered by each child in the program with the total number of potential milestones for that domain. Results are reflected over time showing the child's progress.

Domain: Creative Arts
 Domain Element: Music
 Art
 Movement
 Dramatic Play



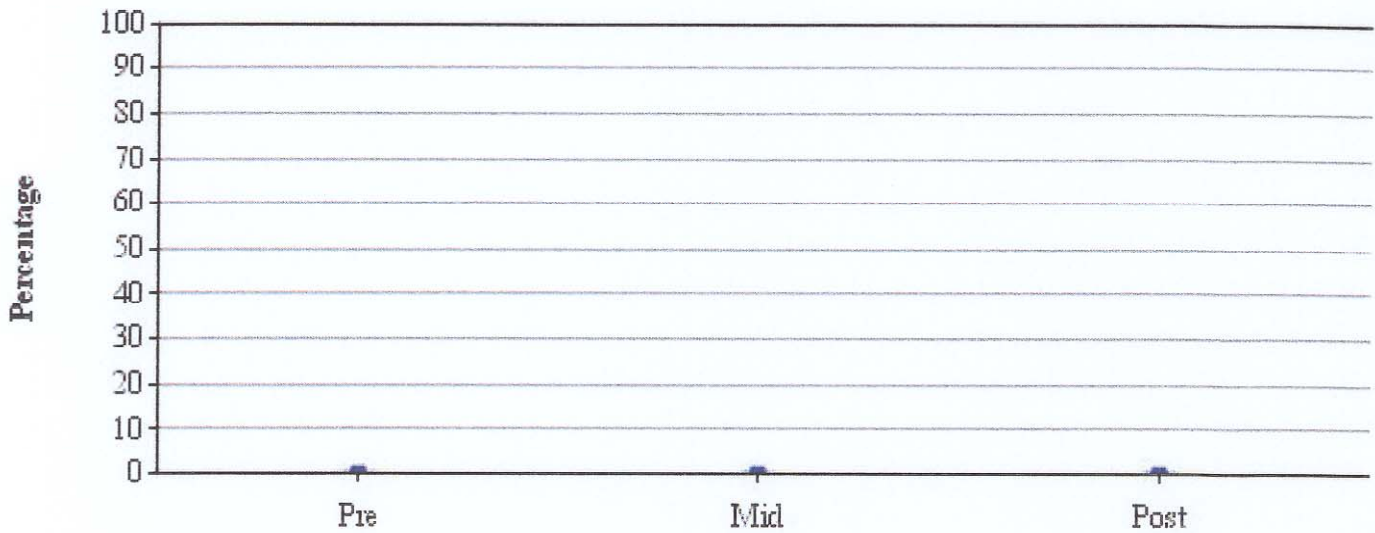
| | | | |
|--------------------|------|------|------|
| Lowest Percentage | 0.00 | 0.00 | 0.00 |
| Program Average | 0.00 | 0.00 | 0.00 |
| Highest Percentage | 0.00 | 0.00 | 0.00 |

| | <u>Pre</u> | <u>Mid</u> | <u>Post</u> |
|-----------------------------|------------|------------|-------------|
| Number of Sites: | 43 | 43 | 43 |
| Number of Children | 3852 | 3584 | 3348 |
| Average | 0.00 | 0.00 | 0.00 |
| Avg. Percentage Gain <Loss> | | 0.00 | 0.00 |

The following report reflects the progress of children in the Head Start Domains at Hidalgo County Head Start over time.

Data is analyzed by comparing the number of milestones in each Domain mastered by each child in the program with the total number of potential milestones for that domain. Results are reflected over time showing the child's progress.

Domain: Social and Emotional Development
 Domain Element: Self Concept
 Self-Control
 Cooperation
 Social Relationships
 Knowledge of Families and Communities



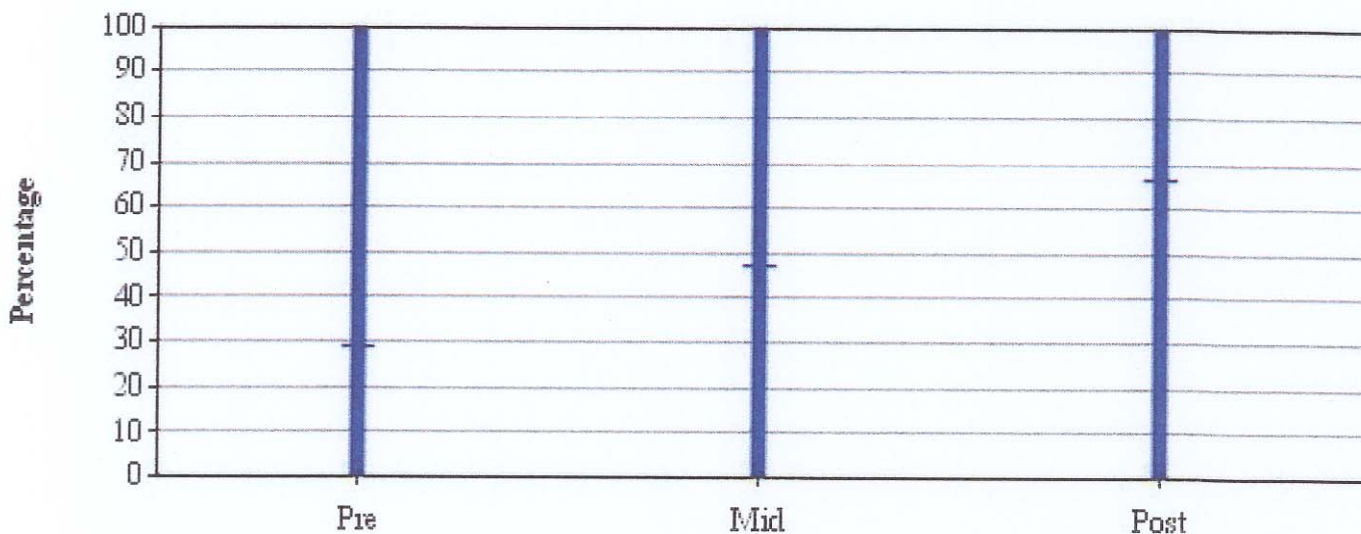
| | | | |
|--------------------|------|------|------|
| Lowest Percentage | 0.00 | 0.00 | 0.00 |
| Program Average | 0.00 | 0.00 | 0.00 |
| Highest Percentage | 0.00 | 0.00 | 0.00 |

| | <u>Pre</u> | <u>Mid</u> | <u>Post</u> |
|-----------------------------|------------|------------|-------------|
| Number of Sites: | 43 | 43 | 43 |
| Number of Children | 3852 | 3584 | 3348 |
| Average | 0.00 | 0.00 | 0.00 |
| Avg. Percentage Gain <Loss> | | 0.00 | 0.00 |

The following report reflects the progress of children in the Head Start Domains at Hidalgo County Head Start over time.

Data is analyzed by comparing the number of milestones in each Domain mastered by each child in the program with the total number of potential milestones for that domain. Results are reflected over time showing the child's progress.

Domain: Approaches to Learning
 Domain Element: Initiative and Curiosity
 Engagement and Persistence
 Reasoning and Problem Solving



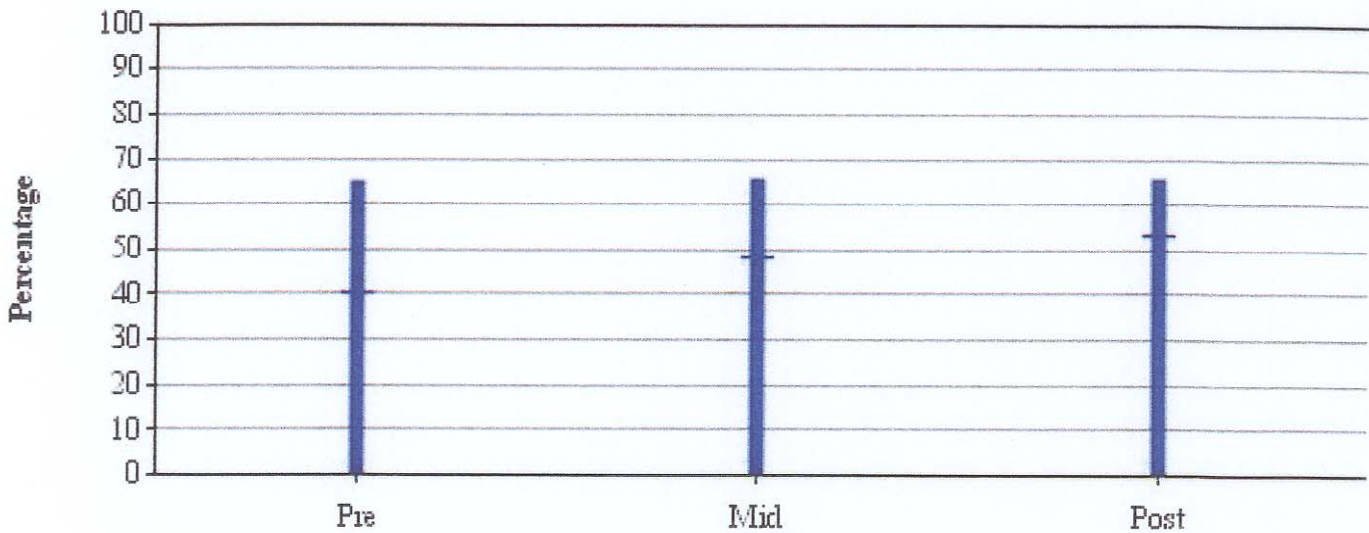
| | | | |
|--------------------|--------|--------|--------|
| Lowest Percentage | 0.00 | 0.00 | 0.00 |
| Program Average | 29.12 | 47.03 | 66.47 |
| Highest Percentage | 100.00 | 100.00 | 100.00 |

| | <u>Pre</u> | <u>Mid</u> | <u>Post</u> |
|-----------------------------|------------|------------|-------------|
| Number of Sites: | 43 | 43 | 43 |
| Number of Children | 3852 | 3584 | 3348 |
| Average | 29.12 | 47.03 | 66.47 |
| Avg. Percentage Gain <Loss> | | 17.91 | 19.43 |

The following report reflects the progress of children in the Head Start Domains at Hidalgo County Head Start over time.

Data is analyzed by comparing the number of milestones in each Domain mastered by each child in the program with the total number of potential milestones for that domain. Results are reflected over time showing the child's progress.

Domain: Physical Health and Development
 Domain Element: Fine Motor Skills
 Gross Motor Skills
 Health Status and Practices



| | | | |
|--------------------|-------|-------|-------|
| Lowest Percentage | 0.00 | 0.00 | 0.00 |
| Program Average | 40.33 | 47.94 | 53.58 |
| Highest Percentage | 63.69 | 64.28 | 64.28 |

| | <u>Pre</u> | <u>Mid</u> | <u>Post</u> |
|-----------------------------|------------|------------|-------------|
| Number of Sites: | 43 | 43 | 43 |
| Number of Children | 3852 | 3584 | 3348 |
| Average | 40.33 | 47.94 | 53.58 |
| Avg. Percentage Gain <Loss> | | 7.61 | 5.64 |