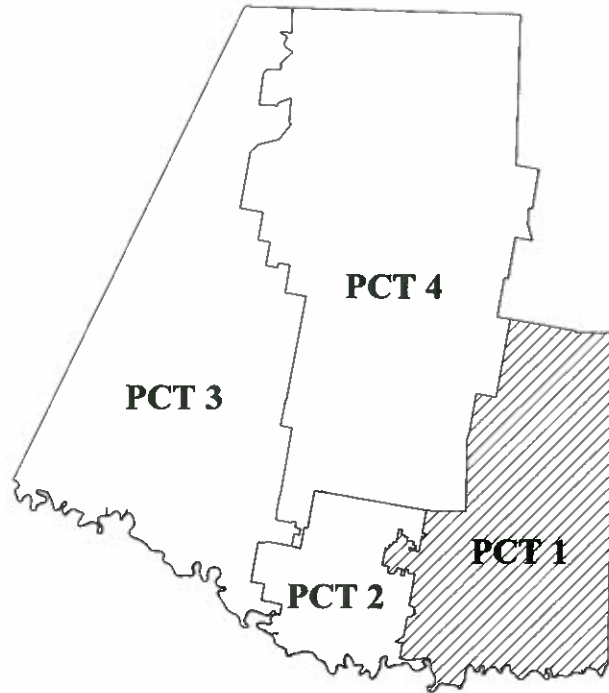


HIDALGO COUNTY PRECINCT No. 1 SOLAR LIGHTS PROJECT



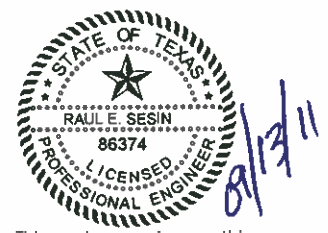
DELTA LAKE PARK, VETERANS PARK, SUNSET/SUNRISE PARK, & PCT 1 OFFICE

<i>RAMON GARCIA</i>	<i>COUNTY JUDGE</i>
<i>COMMISSIONER JOEL QUINTANILLA</i>	<i>PRECINCT No. 1</i>
<i>COMMISSIONER HECTOR " TITO " PALACIOS</i>	<i>PRECINCT No. 2</i>
<i>COMMISSIONER JOE M. FLORES</i>	<i>PRECINCT No. 3</i>
<i>COMMISSIONER JOSEPH PALACIOS</i>	<i>PRECINCT No. 4</i>



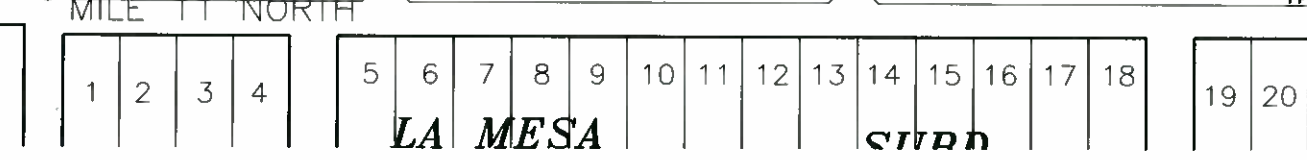
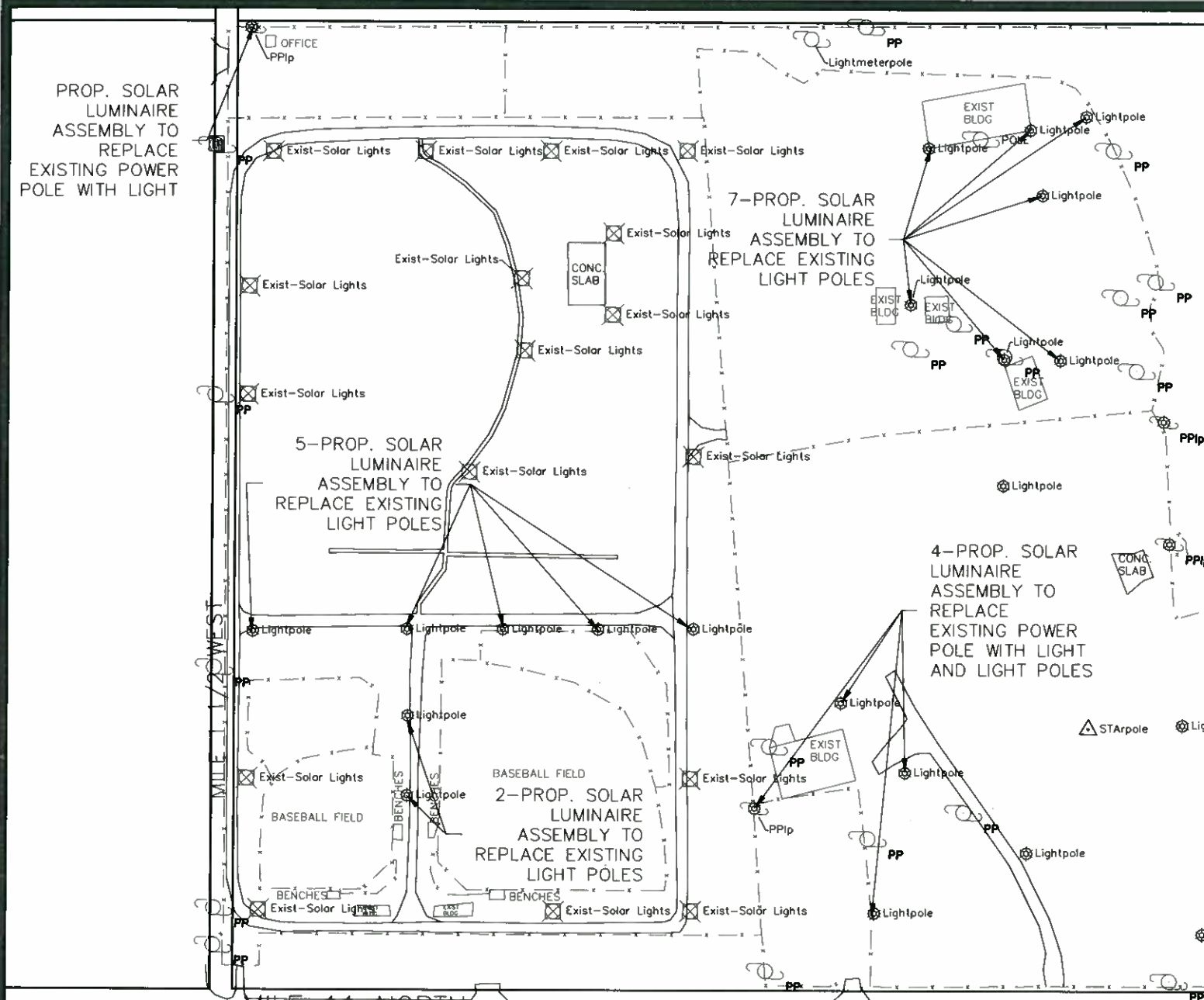
HIDALGO COUNTY PLANNING DEPARTMENT

1304 S. 25 TH. STREET
EDINBURG TX. 78539
TEL: (956) 318-2840 ★ FAX: (956) 318-2844
www.co.hidalgo.tx.us
RAUL E. SESIN, P.E., C.F.M.
PLANNING ADMINISTRATOR



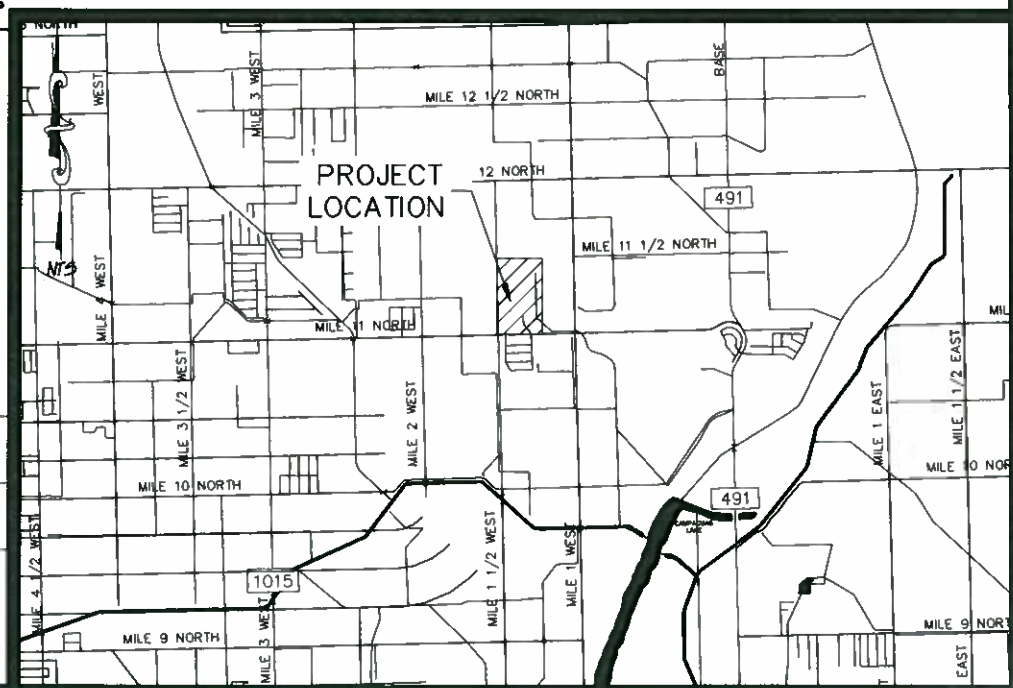
This seal appearing on this document was authorized by Raul E. Sesin P.E. No. 86374 on the above designated date.

[Signature]
RAUL E. SESIN-P.E. No. 86374



NOTES:
 ALL LUMINAIRE ASSEMBLY LOCATIONS ARE TENTATIVE, THE CONTRACTOR SHALL DETERMINE THE OPTIMUM LOCATION BASED ON R.O.W. AVAILABILITY, FIELD CONDITIONS, AND MANUFACTURER'S RECOMMENDATIONS.
 LUMINAIRE ADJUSTMENTS SUBJECT TO APPROVAL BY THE ENGINEER.
 LUMINAIRE ARMS SHALL BE AIMED PERPENDICULAR TO THE CENTERLINE OF ROADWAY OR AS DIRECTED BY THE ENGINEER.
 LUMINAIRE ASSEMBLY WILL BE INSTALL NEXT TO EXISTING SERVICE POLE WHEN LOCATED INSIDE ROW OR WHERE DETERMINE BY THE ENGINEER.

SUMMARY OF QUANTATIES		
DESCRIPTION	UNIT	QTY
FURNISH AND INSTALL SOLAR LIGHTING ASSEMBLIES (COMPLETE IN PLACE)	EA	19



HIDALGO COUNTY
 PLANNING DEPARTMENT
 1304 S. 25 TH STREET
 EDINBURG TX 78539
 TEL: (956) 318-2840 FAX: (956) 318-2844
 www.co.hidalgo.tx.us
 RAUL E. SESIN, P.E., C.F.M.
 PLANNING ADMINISTRATOR

**HIDALGO COUNTY
 PRECINCT 1 PROJECT**

**SUNSET/SUNRISE
 PARK**
 PROPOSED LUMINAIRE ASSEMBLY

STATE OF TEXAS
 RAUL E. SESIN
 86374
 LICENSED PROFESSIONAL ENGINEER
 CIVIL
 This seal appearing on this document was authorized by Raul E. Sesin P.E. No. 86374 on the above designated date.

SCALE: 1"=200'
 DATE: 9-2-11
 DRAWN BY: CYNTHIA PEREZ
 DESIGNED BY: R. SESIN
 REVISED BY: R. SESIN
 SURVEYED BY: E. ESPINO
 PROJECT FILE:

SHEET:
 10 OF 1

Drawing: I:\PCT_1\pct_1_peris\asest\pct1\project\park_1000.dwg Plotted by: cynthia.perez
 User: jlp Date: 09/13/2011 Time: 01:54:50 PM

81

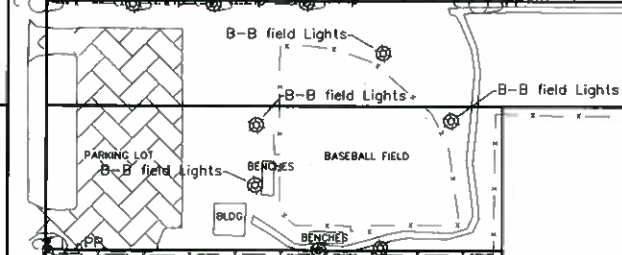
3-PROP. SOLAR LUMINAIRE ASSEMBLY TO REPLACE EXISTING POWER POLE WITH LIGHT

MONTE ALTO ACRES PHASE I

2-PROP. SOLAR LUMINAIRE ASSEMBLY TO REPLACE EXISTING POWER POLE WITH LIGHT

M585702

2-PROP. SOLAR LUMINAIRE ASSEMBLY 37 TO REPLACE EXISTING POWER POLE WITH LIGHT



MONTE ALTO ACRES PH IV

MONTE ALTO ACRES PH.III

FIRST STREET

S001500

SACAME

LEGEND

- ⊗ BASE BALL FIELD LIGHTS
- ⊕ POWER POLE W/LIGHT
- ⊖ POWER POLE

NOTES:

ALL LUMINAIRE ASSEMBLY LOCATIONS ARE TENTATIVE, THE CONTRACTOR SHALL DETERMINE THE OPTIMUM LOCATION BASED ON R.O.W. AVAILABILITY, FIELD CONDITIONS, AND MANUFACTURER'S RECOMMENDATIONS.

LUMINAIRE ADJUSTMENTS SUBJECT TO APPROVAL BY THE ENGINEER.

LUMINAIRE ARMS SHALL BE AIMED PERPENDICULAR TO THE CENTERLINE OF ROADWAY OR AS DIRECTED BY THE ENGINEER.

LUMINAIRE ASSEMBLY WILL BE INSTALL NEXT TO EXISTING SERVICE POLE WHEN LOCATED INSIDE ROW OR WHERE DETERMINE BY THE ENGINEER.

SUMMARY OF QUANTATIES

DESCRIPTION	UNIT	QTY
FURNISH AND INSTALL SOLAR LIGHTING ASSEMBLIES (COMPLETE IN PLACE)	EA	7



HIDALGO COUNTY PLANNING DEPARTMENT
 1304 S. 25 TH. STREET
 EDWING TX. 78239
 TEL: (956) 318-2840 FAX: (956) 318-2844
 WWW.HIDALGOCOUNTYTX.GOV
 RAUL E. SESIN, P.E., F.M.A.
 PLANNING ADMINISTRATOR

**HIDALGO COUNTY
 PRECINCT 1 PROJECT**

**VETERANS PARK
 PROPOSED LUMINAIRE ASSEMBLY**

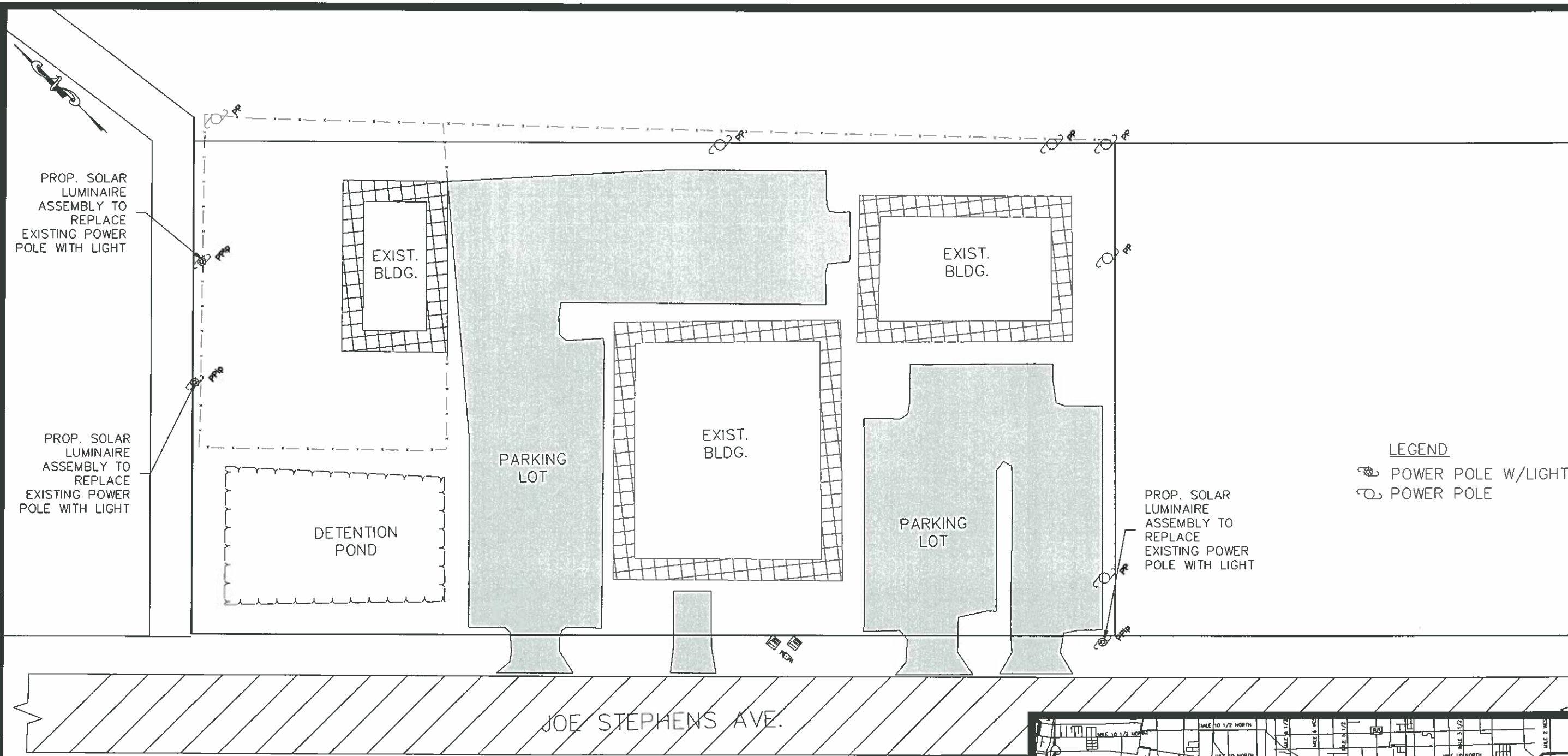
STATE OF TEXAS
 RAUL E. SESIN
 86374
 LICENSED PROFESSIONAL ENGINEER

This seal appearing on this document was authorized by Raul E. Sesin P.E. No. 86374 on the above designated date.

SCALE: 1"=200'
 DATE: 8-9-11
 DRAWN BY: CINTIA PEREZ
 DESIGNED BY: R. SESIN
 REVIEWED BY: R. SESIN
 SURVEYED BY: E. MADRO
 PROJECT FILE:

SHEET:
 10F1

Drawing: L:\PCT 1\pct_1_parks\Veterans Park\Veterans TOPD.dwg Plotted by: cynthia.perez
 Layout: Top TOPD Date: 09/13/2011 Time: 01:55:38 PM

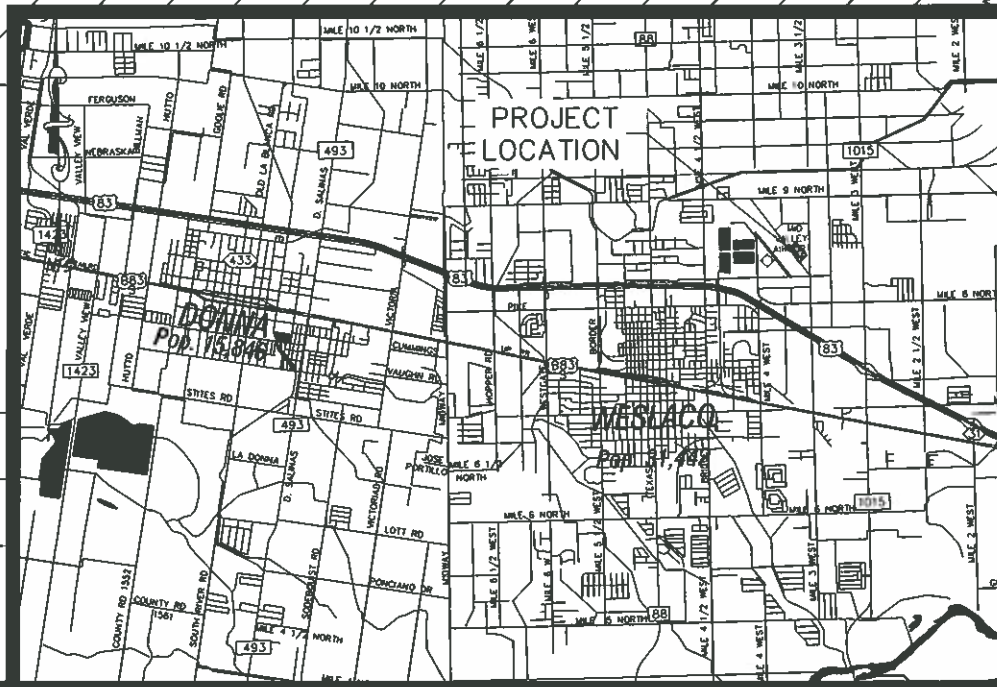


LEGEND
 POWER POLE W/LIGHT
 POWER POLE

NOTES:
 ALL LUMINAIRE ASSEMBLY LOCATIONS ARE TENTATIVE, THE CONTRACTOR SHALL DETERMINE THE OPTIMUM LOCATION BASED ON R.O.W. AVAILABILITY, FIELD CONDITIONS, AND MANUFACTURER'S RECOMMENDATIONS.
 LUMINAIRE ADJUSTMENTS SUBJECT TO APPROVAL BY THE ENGINEER.
 LUMINAIRE ARMS SHALL BE AIMED PERPENDICULAR TO THE CENTERLINE OF ROADWAY OR AS DIRECTED BY THE ENGINEER.
 LUMINAIRE ASSEMBLY WILL BE INSTALL NEXT TO EXISTING SERVICE POLE WHEN LOCATED INSIDE ROW OR WHERE DETERMINE BY THE ENGINEER.

SUMMARY OF QUANTATIES

DESCRIPTION	UNIT	QTY
FURNISH AND INSTALL SOLAR LIGHTING ASSEMBLIES (COMPLETE IN PLACE)	EA	3



HIDALGO COUNTY
 PLANNING DEPARTMENT
 1304 S. 25 TH. STREET
 EDINBURG TX. 78539
 WWW.CO.HIDALGO.TX.US FAX: (956) 318-2844
 TEL: (956) 318-2840
 RAUL E. SESIN, P.E., C.E.M.
 PLANNING ADMINISTRATOR

**HIDALGO COUNTY
 PRECINCT 1 PROJECT**

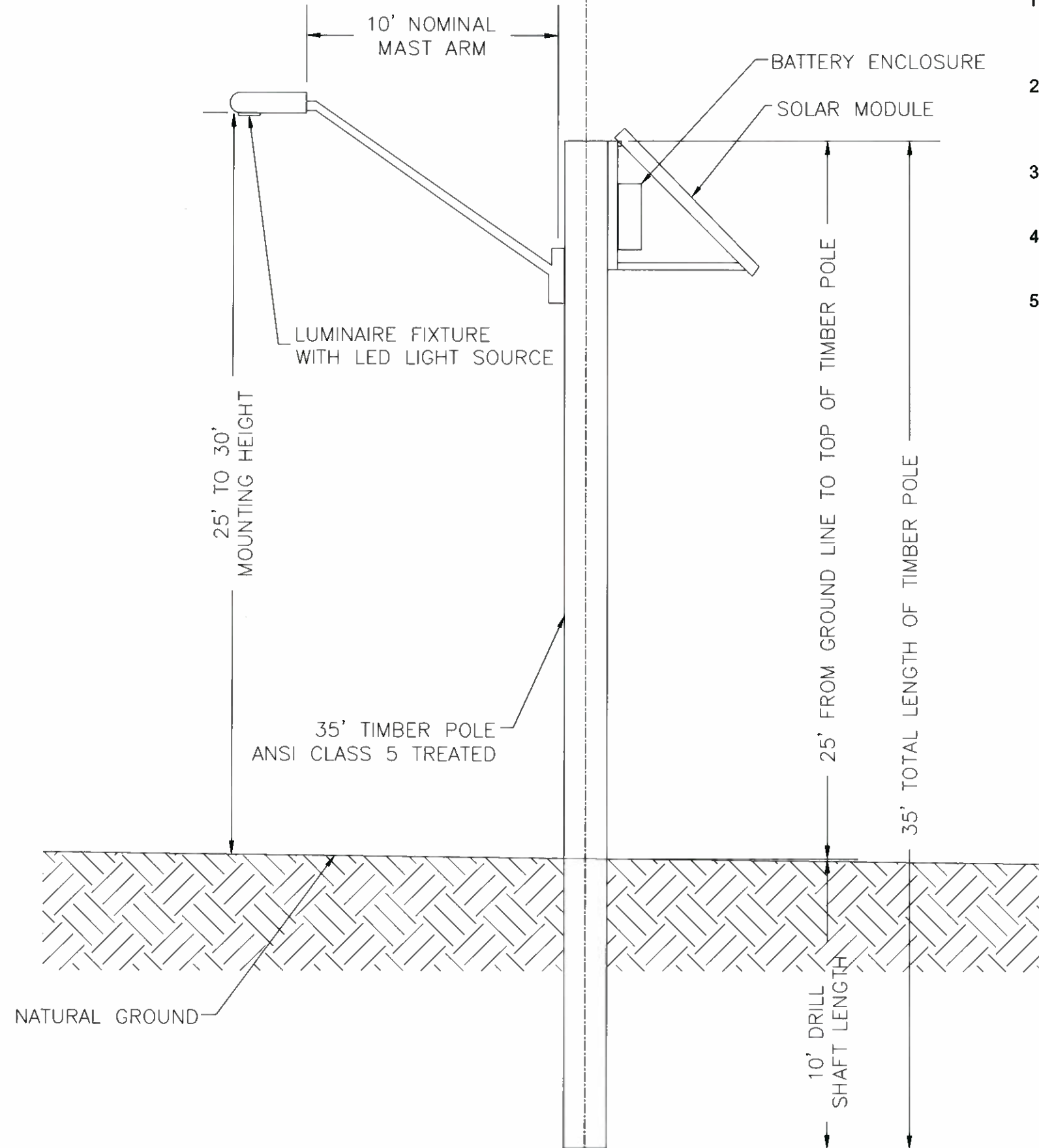
**PCT 1 OFFICE
 PROPOSED LUMINAIRE
 ASSEMBLY**

STATE OF TEXAS
 RAOUL E. SESIN
 86374
 LICENSED PROFESSIONAL ENGINEER
 This seal appearing on this document was obtained by Raul E. Sesin P.E. No. 86374 on the date distributed date.
 SCALE: 1"=50'
 DATE: 9-2-11
 DRAWN BY: GINITHA PEREZ
 DESIGNED BY: R. SESIN
 REVIEWED BY: R. SESIN
 SURVEYED BY: E. PEDRO
 PROJECT FILE:
 SHEET:
 10F1

Drawing: I:\PCT 1\pct 1\pct 1\office\pct 1\office\topo solar lights.dwg Plotted by: ginhaperez
 Layout: Topo Date: 09/13/2011 Time: 02:13:53 PM

GENERAL NOTES:

1. THE CONTRACTOR SHALL INSTALL A FULLY OPERATIONAL SOLAR POWERED LUMINAIRE ASSEMBLY AT PROPOSED LOCATIONS.
2. CONTRACTOR SHALL VERIFY ALL SOLAR MODULES ARE FREE OF ANY OBSTRUCTIONS AND ORIENTATE SOLAR PANELS FOR MAXIMUM SUN EXPOSURE.
3. CONTRACTOR SHALL BE RESPONSIBLE TO CALL DIG TESS 48 HOURS PRIOR TO COMMENCEMENT OF WORK FOR UTILITY SPOTTING @ (1-800-DIG-TESS) AND CONTACT THE HIDALGO COUNTY IRRIGATION DISTRICT AND WATER SUPPLIERS FOR THE PROJECT AREA.
4. CONTRACTOR SHALL STAKE R.O.W. AND OR PROPERTY LINE BY LOCATING PROPERTY PINS ON LOTS ADJACENT TO PROPOSED LUMINAIRE LOCATION.
5. ALL WORK SHALL BE COMPLETED TO THE SATISFACTION OF THE HIDALGO COUNTY PRECINCT NO. 1
6. ANY DAMAGES TO FENCES, WALKS, OR PRIVATE PROPERTY SHALL BE REPAIRED BY THE CONTRACTOR AT HIS EXPENSE.
7. CONTRACTOR TO MAINTAIN ALL EQUIPMENT AND TRANSPORTATION OF SAID EQUIPMENT WITHIN THE EXISTING RIGHT OF WAY OF THE CITY, COUNTY, OR STATE.
8. THE CONTRACTOR SHALL BE RESPONSIBLE TO REPAIR ANY SURFACE IRREGULARITIES, AS DIRECTED BY THE ENGINEER, CAUSED BY THE CONTRACTOR'S WORKING OPERATIONS.
9. THE CONTRACTOR SHALL CLEANUP AND RESTORE THE AREA OF OPERATIONS TO A CONDITION AS GOOD AS OR BETTER THAN THAT WHICH EXISTED PRIOR TO INSTALLATION OF ALL ITEMS TO BE CONSTRUCTED.
10. THE PREPARATION OF THESE PLANS REFLECTS INFORMATION, PROVIDED BY OTHERS, ON THE APPROXIMATE LOCATION AND EXISTENCE OF EXISTING PUBLIC AND PRIVATE UTILITY LINES AND ADJACENT PHYSICAL FEATURES. HOWEVER, THEY DO NOT IMPLY OR AFFIRM THAT ALL UTILITIES OR PHYSICAL FEATURES ARE SHOWN. GENERALLY, UTILITY SERVICE CONNECTIONS ARE NOT INDICATED ON THESE PLANS. CONTRACTOR IS RESPONSIBLE FOR NOTIFICATIONS OF THE OWNER IMMEDIATELY UPON ENCOUNTERING UNFORESEEN CONFLICTS.
11. THE APPROXIMATE LOCATIONS OF KNOWN EXISTING PUBLIC AND PRIVATE UTILITIES ARE SHOWN, CONTRACTOR SHALL DETERMINE THE EXACT HORIZONTAL AND VERTICAL LOCATIONS IN THE FIELD PRIOR TO COMMENCING WORK. CONTRACTOR TO BE FULLY RESPONSIBLE FOR DAMAGES WHICH MIGHT OCCUR BY HIS FAILURE TO EXACTLY LOCATE AND PRESERVE EXISTING UTILITIES.



SEQUENCE OF CONSTRUCTION

1. CONTRACTOR TO DETERMINE OPTIMUM LOCATION OF LUMINAIRE ASSEMBLIES.
2. ENGINEER TO REVIEW OPTIMUM LOCATION OF LUMINAIRE ASSEMBLIES AND DIRECTION OF LUMINAIRE ARMS.
3. CONTRACTOR TO CALL FOR SPOTTING OF UTILITIES.
4. STAKING OF R.O.W AND OR PROPERTY LINES.
5. INSTALLATION OF LUMINAIRE ASSEMBLIES.

HIDALGO COUNTY
PLANNING DEPARTMENT
1304 S. 25 TH. STREET
EDINBURG TX. 78539
TEL: (956) 318-2840 FAX: (956) 318-2844
WWW.CO.HIDALGO.TX.US
RAUL E. SESIN, P.E., C.F.M.
PLANNING ADMINISTRATOR

**HIDALGO COUNTY
PRECINCT 1 PROJECT**

**HIDALGO COUNTY PCT 1
SOLAR LIGHTS PROJECT
TYPICAL SOLAR LUMINAIRE ASSEMBLY DETAIL
AND GENERAL NOTES**

This seal appearing on this document was authorized by Raul E. Sesin P.E. No. 86374 on the above designated date.

RAUL E. SESIN, P.E. No. 86374

SCALE: NTS
DATE: 8-10-11
DRAWN BY: CYNTHIA PEREZ
DESIGNED BY: R. SESIN
REVIEWED BY: R. SESIN
SUPERVISED BY: E. ISIDRO
PROJECT FILE:

Drawing: I:\PCT 1\pct 1 parts\general notes.dwg, Plotted by: cynthiaperez, Layout: Top, TPO Date: 08/13/2011, Time: 02:01:27 PM