

**Requisition**

Req # 00204674

*Consent  
11/8/11  
#29476*

PO #  
Date: 10/19/11

Bill To: x  
x

Vendor : 42129  
XEROX CORPORATION  
P. O. BOX 7405  
PASADENA CA 91109-7405

Ship To: 139TH DISTRICT COURT  
100 N. CLOSNER, 2ND FL  
EDINBURG TX 78539

Contact: Pete S. Lobato  
956-318-2260

Contract No: SMARTBUY PO

Special Instructions:

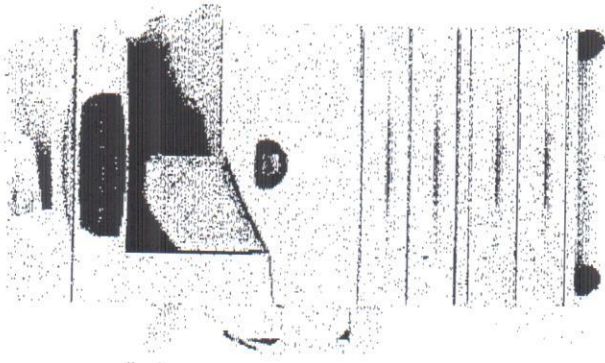
QUANTITY	UOM	DESCRIPTION	UNIT PRICE	AMOUNT
2.00	MONTH	TPASS TERM CONTRACT 985-L2 SMARTBUY REQUISITION SMARTBUY PURCHASE ORDER # TRADE-IN SERIAL # DO NOT DUPLICATE ORDER  CO NEW 36 MONTHS (CAPITAL) LEASE CONTRACTOR'S QUOTE FOR WC5225 Copier w/stand, 25 Pages per Minute, 75 Sheet DADF, Automatic Document Feeder, Up to 11 x 17 output prints, Standard Two 500-Sheet Trays, Integrated Office Finisher/Stapler, Mobile stand included. PRICE INCLUDES 5,000 IMPRESSIONES ALL EXCESS PRINTS @0.0116  <u>Account No</u>  1-1100-412-00-003-001-0-780    REPORT ROAD HAZARDS 1-866-HCR-SAFE OR 1-866-427-7233	105.92	211.84
			<u>Encumbrance</u>	
			211.84	
			Freight	.00
			Total	211.84

Authorized By: \_\_\_\_\_

**XEROX<sup>®</sup>**

**WORK CENTRE 5225**

**XEROX 985-L2 LEASE**



**Copy**

- 25 Pages per Minute
- 75 Sheet DADF
- Automatic Document Feeder
- Up to 11 X 17 output prints
- Standard Two 500-Sheet Trays
- Integrated Office Finisher/Stapler
- Mobile stand included

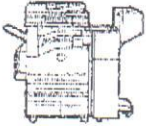
**TPASS 36 MONTH LEASE CATALOG  
TPASS CONTRACT  
\$105.92**

**TRADE IN SERIAL # FLA019160**

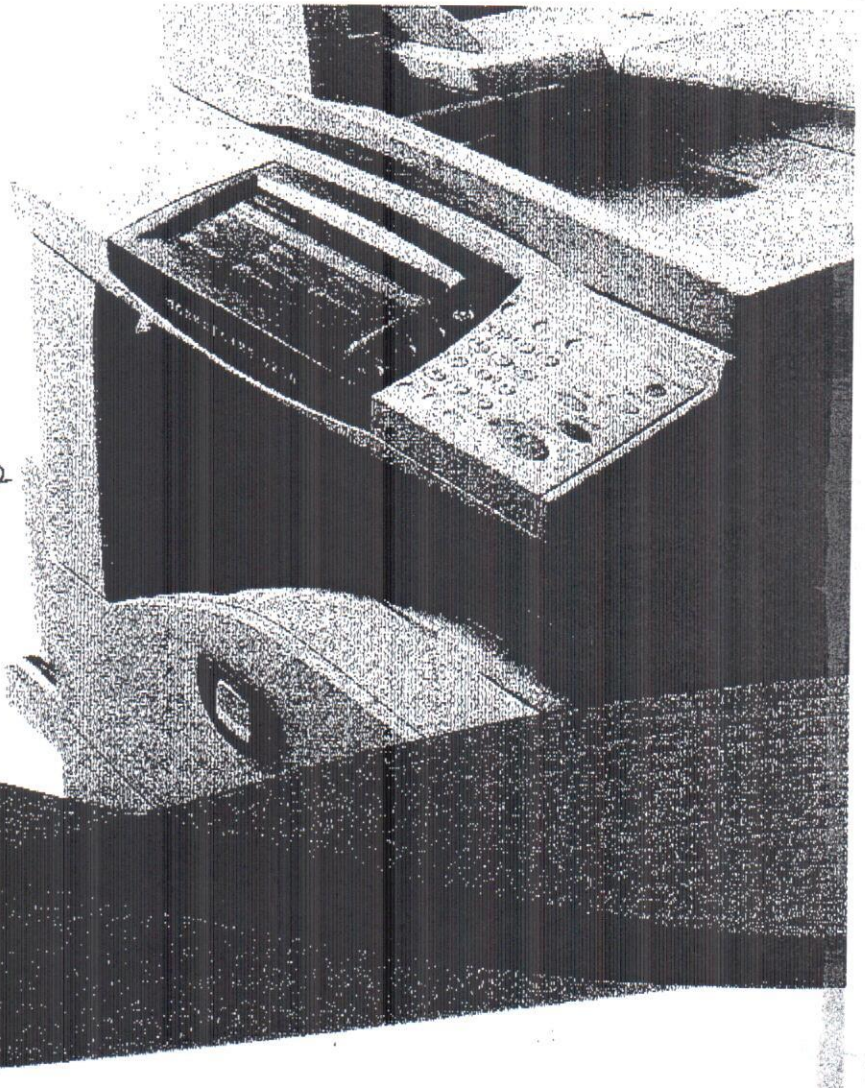
**PRICE INCLUDES 5,000  
IMPRESSIONES ALL EXCESS PRINTS  
@ 0.0116  
CASH PRICE \$ 3,813.12**

*Reg 204674*

WorkCentre®  
5225 / 5230  
Tabloid  
Black-and-white  
Multifunction Printer



*10/19/11  
To: Matilda Jaz 292-7612  
From: Pete Labato  
139th D.C.*



Xerox® WorkCentre® 5225 / 5230  
Multifunction Printer  
Productivity, flexibility  
and simplicity

*780!*



# WorkCentre® 5225 / 5230 Multifunction Printer

**Fast copying and printing, advanced scanning and faxing, and the power to customize workflows.** The modular and easy-to-manage WorkCentre 5225 / 5230 multifunction printer is packed with high-end features to deliver a level of productivity above and beyond your typical office MFP.

## Redefining workgroup productivity

Whether your workgroup needs exceptional copier performance or the added power of printing, scanning and faxing, the WorkCentre 5225 / 5230 is all about productivity. A host of time-saving features boost your team's efficiency, and advanced workflow solutions streamline the tasks you perform every day.

**25  
30  
ppm**

- **Print and copy speeds up to 25 / 30 ppm and a scan speed of up to 55 ipm** keep up with your busy pace.
- **A robust copier** that can handle your workgroup's volumes, and offers convenient features including ID card copy, which scans both sides of an ID card and prints them face-up on a single sheet of paper.
- **Powerful scanning tools** let you back up critical documents — converting them into digital files for easy sharing and archiving while reducing the amount of physical storage space required.
- **Introduce new workflows or automate repetitive processes** within the office environment by automatically routing documents to predefined locations at the touch of a button.
- **With color scanning** available on the 5225A / 5230A configuration\*, users can take advantage of all the benefits of scanning while maintaining the original look and feel of full color documents.

## Simplicity in design

With fast deployment and easy support, your WorkCentre 5225 / 5230 is ready to deliver the performance you need, when you need it. Helpful tools make it easy to maintain complete control — allowing you to keep costs to a minimum.

- **Cost control features** include an Internal Auditor, which lets administrators set limits for print, copy, fax and scan functions by user.
- **Confidential data stays private** over your network thanks to features such as network authentication, print and scan encryption for safe data transfers, and Image Overwrite.
- **Xerox CentreWare Internet Services** simplifies installation and network administration, providing quick access to device status. Automatic email alerts notify administrators or users of events that require attention, such as low toner levels.
- **PC, Mac or Unix**, the WorkCentre 5225 / 5230 excels in any environment.
- **MeterAssistant™** automatically collects and securely submits your device meter reads to increase billing accuracy, while SuppliesAssistant™ proactively manages toner supplies and monitors usage to ensure you have the right supplies at the right time.

## Powerful scanning solutions

- **Scan to Email** lets you route files to email recipients directly from the front panel.
- **Network scanning** uses convenient templates to send scans to predefined locations.
- **Scan to Mailbox** lets you send electronic files to the device's hard drive for easy retrieval.
- **Job Flow Sheets** simplify everyday workflows by automatically routing documents to predefined locations, including preset email addresses, fax destinations, and FTP/SMB sites.
- **Compression technology** available for the 5225A / 5230A configuration creates smaller scan files for faster delivery and reduced network load.
- **Full compatibility** with other Xerox office solutions, including SMARTsend® software for advanced document routing.

### WorkCentre® 5225 / 5230 Quick Facts

- Print and copy at up to 25 / 30 ppm
- Powerful scan and fax solutions
- Print up to 11 x 17 in. / A3
- Up to 1200 x 1200 dpi print resolution
- Max paper capacity: 5,100 sheets
- Best-in-class security — Full System Common Criteria Certified (ISO 15408)
- Xerox Extensible Interface Platform (EIP)



Print / Copy / Scan / Fax

11 x 17 in. / A3

ppm

**WxDxH:**  
25.2 x 25.7 x 43.8 in.  
640 x 652 x 1,113 mm



WorkCentre 5225 / 5230  
with two-tray module

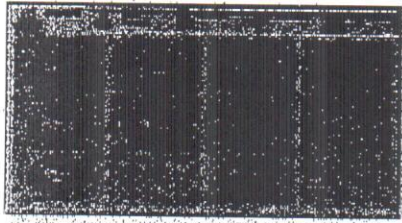
\*Black-and-white scanning copier and printer-copier configurations of the WorkCentre 5225 / 5230 cannot be upgraded to the color-scanning WorkCentre 5225A / 5230A configuration

### Flexibility

Choose a powerful tabloid-size copier and add printing, scanning and faxing capabilities to optimize your workgroup's productivity. As your work volume increases, the WorkCentre 5225 / 5230 is ready to expand to meet your business needs.

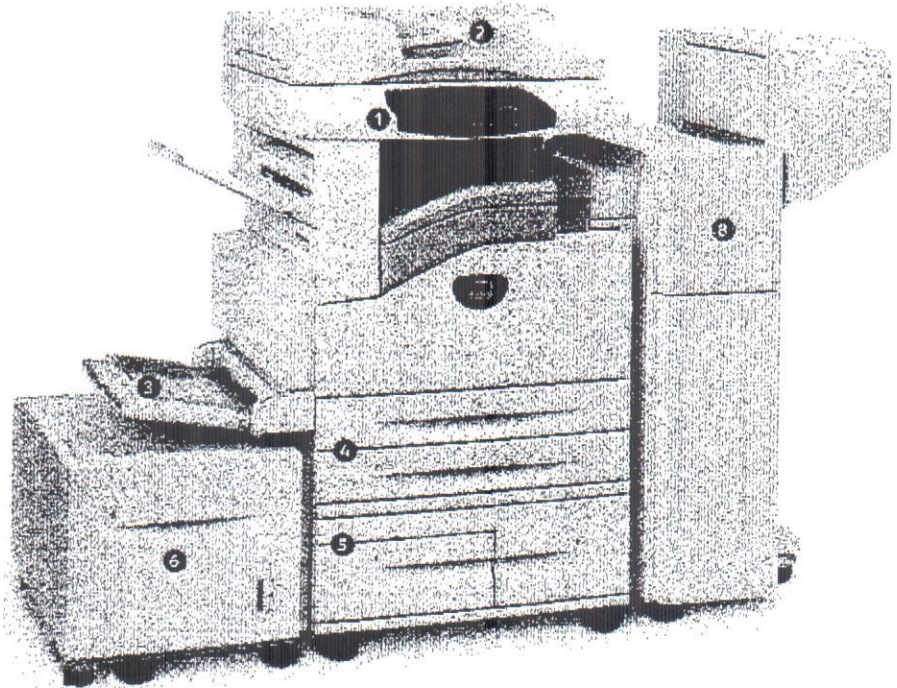
#### Xerox Extensible Interface Platform™ (EIP)

**1**  
Xerox EIP is a software platform inside the WorkCentre 5225 / 5230 that enables personalized solutions you can access right from the device touch screen. These applications can leverage your existing databases and meet your specific business challenges.



#### Paper input

- 2** 75-sheet Duplex Automatic Document Feeder (DADF) quickly processes single- or double-sided originals.
- 3** 100-sheet bypass tray for specialty media and custom sizes
- 4** Two standard 500-sheet trays are adjustable up to 11 x 17 in.
- 5** Choose a 1,000-sheet Two Tray module (adjustable up to 11 x 17 in.) or a 2,000 sheet letter-size Tandem Tray
- 6** A 2,000-sheet external High-Capacity Feeder can increase total capacity to 5,100 sheets.



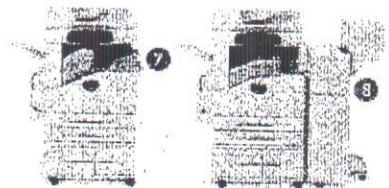
#### Optional Finishing

- 7** Space-saving Integrated Finisher for convenient single-position stapling.
- 8** Office Finisher LX adds multi-position stapling and optional booklet creation and hole punching.



#### Comprehensive Security

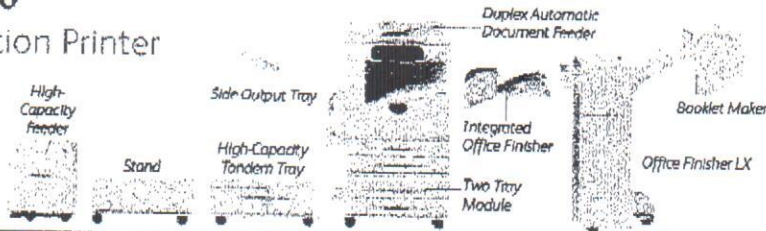
The tools you need to restrict access, track usage and protect confidential data. Security features include Secure Print, Secure Fax, print and scan encryption, Image Overwrite, IP filtering, built-in support for SNMPv3.0, and Full System Common Criteria Certification (ISO 15408).



WorkCentre® 5225 / 5230 Configurations		Add Scanning	Add Faxing	Add Finishing and Trays
<b>5225 / 5230 Copier</b> <ul style="list-style-type: none"> <li>• Advanced copy features</li> <li>• Automatic two-sided</li> <li>• 40 GB Hard drive</li> <li>• ID Card Copy</li> </ul>	<b>5225 / 5230 Printer / Copier</b> <b>Copier features plus:</b> <ul style="list-style-type: none"> <li>• 1200 dpi printing</li> <li>• Ethernet</li> <li>• Bi-directional drivers</li> <li>• Device management</li> </ul>	<ul style="list-style-type: none"> <li>• Black-and-white Scan to email (with LDAP authentication and Scan to Mailbox)</li> <li>• Black-and-white Network Scanning (includes Scan to Email and Mailbox)</li> <li>• Scan to PC Desktop® software</li> </ul>	<ul style="list-style-type: none"> <li>• Walk-up fax (includes LAN Fax)</li> <li>• Internet fax</li> <li>• Server fax</li> </ul>	<ul style="list-style-type: none"> <li>• Stapling</li> <li>• Hole-punching</li> <li>• Booklet making</li> <li>• Tray options including 2,000-sheet high-capacity feeder and side output tray</li> </ul>
<b>5225A / 5230A Printer / Copier / Scanner</b> Printer / Copier features with Color Network Scanning		<ul style="list-style-type: none"> <li>• Scan Performance Kit* (Text Searchable PDF and 256 MB memory enabling MRC Compression)</li> </ul> <p><small>* Available for Color Scanning 5225A / 5230A configuration only</small></p>		

# WorkCentre® 5225 / 5230

## Black-and-white Multifunction Printer



	WorkCentre® 5225 / 5230 Copier	WorkCentre® 5225 / 5230 Printer / Copier	WorkCentre® 5225 / 5230A Printer / Copier / Color Scanner
<b>Speed</b>	Up to 25 / 30 ppm		
<b>Duty Cycle</b>	5225: Up to 75,000 Images/month; 5230: Up to 100,000 Images/month		
<b>Device Memory</b>	256 MB std / 512 MB max	512 MB std / max	512 MB std / 768 MB max
<b>Hard Drive</b>	Standard 40 GB		
<b>Paper Handling</b>	Duplex Automatic Document Feeder (DADF): 75 sheets; 5.5 x 8.3 in. to 11.7 x 17 in. / 140 x 210 mm to 297 x 432 mm Bypass Tray: 100 sheets; Custom sizes: 3.5 x 3.9 in. to 11 x 17 in. / 89 x 99 mm to A3 Tray 1: 500 sheets; 5.5 x 7.2 in. to 11 x 17 in. / 140 x 182 mm to A3 Tray 2: 500 sheets; 5.5 x 7.2 in. to 11 x 17 in. / 140 x 182 mm to A3		
Paper Input	Standard		
	Choose One	Mobile Stand Two Tray Module: 500 sheets each; Sizes: 5.5 x 7.2 in. to 11 x 17 in. / 140 x 182 mm to A3 High Capacity Tandem Tray: One 800-sheet tray, One 1,200-sheet tray; Sizes: 8.5 x 11 in. / A4 (long-edge feed)	
	Optional	High Capacity Feeder: 2,000 sheets; Sizes: B5, Executive, 8.5 x 11 in., A4 (long-edge feed) Envelope Tray: Up to 65 envelopes; #10 commercial, Monarch, DL, GS, custom, Large US Postcard, A6	
Paper output	Standard	Automatic two-sided, 500-sheet center tray	
	Optional	100-sheet Side Output Tray	
Finishing	Optional	Integrated Office Finisher: 500-sheet stacker, 50 sheets stapled, single-position stapling Office Finisher LX: 2,000-sheet stacker, 30 sheets stapled, 3-position stapling, optional hole-punch, optional booklet maker (score, saddle stitch)	
<b>Copy</b>			
First-page-out time	As fast as 4.3 seconds		
Copy resolution (max)	Up to 600 x 600 dpi		
Copy features	Collation, Separators, Book copying, Booklet creation, Covers, Poster, Annotation/Bates Stamping™, Watermark, ID Card Copying, N-up, Build Job, Sample Job, Image Overlay		
<b>Print</b>			
First-page-out-time	Optional	As fast as 12 seconds	
Print resolution		Up to 1,200 x 1,200 dpi	
Connectivity		10/100Base-TX Ethernet, USB 2.0	
Processor		Power PC 333 MHz	
Language support		PCL®6, PCL 5e, Adobe® PostScript® 3™ (optional)	
Print features		Secure print, Delay print, Sample set, Booklet creation, Cover selection, Multi-up, Watermark, Image overwrite	
<b>Fax</b>	Optional	Walk-up Fax (one-line)	Walk-up Fax (one-line), Internet Fax, Server fax
Fax features	LAN Fax™, Secure Fax, Fax Forwarding, P-Code, Remote Polling, Acknowledgment Report, Remote Mailboxes		
<b>Scan</b>	Optional	Black-and-white Scan to Email (w/ LDAP and Mailbox functionality), Black-and-White Network Scan Kit, Scan to PC Desktop*	Scan Performance: 150 sheets/minute (A4) and 200 sheets/minute (A3) (with optional scanning unit)
Scan features	Requires Printer Kit upgrade		Color Network Scanning: 150 sheets/minute (A4) and 200 sheets/minute (A3) (with optional scanning unit) File Formats: PDF, TIFF, Multipage TIFF, xps Scan to Mailbox, Scan to PC, Scan to Home, Job-Flow Sheets
Scan speed	Up to 55 ipm @ 200 dpi		Up to 150 sheets/minute (A4) and 200 sheets/minute (A3)
<b>Accounting</b>	Internal Auditor – Copy		Internal Auditor – Copy, Print, Scan, Fax; Xerox Standard Accounting – Copy, Print, Fax, Network Accounting enablement (optional thru 3rd Party)
<b>Security</b>	Standard	NA	Secure Print, HTTPS (SSL), SNMPv3, Network Authentication, IP Filtering
	Optional	Security Kit (Disk Image Overwrite, Data Encryption and Audit Log), Secure Access	
<b>Other Options</b>	256 MB Memory*, Foreign Device Interface		Foreign Device Interface
<b>Operating Systems</b>	Requires Printer Kit		Windows 2000 / Windows XP / Windows Vista / Windows 2000 Server / Windows Server 2003; Mac OS 10.3 and above; UNIX/Solaris, Linux, Citrix

\* Available on WorkCentre 5225 / 5230 Copier configuration only \*\* Requires Printer/Copier configuration



Call today. For more information, call 1-800-ASK-XEROX or visit us at [www.xerox.com/office](http://www.xerox.com/office)

© 2009 Xerox Corporation. All rights reserved. Contents of this publication may not be reproduced in any form without a permission of Xerox Corporation. XEROX®, WorkCentre® and the sphere of connectivity design are trademarks of Xerox Corporation in the U.S. and/or other countries. ENERGY STAR® is a U.S. registered mark. As an ENERGY STAR® Partner, Xerox Corporation has determined that these products meet the ENERGY STAR® guidelines for energy efficiency. All other trademarks are the property of their respective manufacturers. The information in this brochure is subject to change without notice. 6/09 6109121687C W308R-01UD

CC Date	State Purchase Order Date	Dept. No.	Lease / Property Schedule No.	Req. Number	Asset Module Asset ID No.	Lease Term Start Date	Model Description	Monthly Pymt Amount	Title Xfer at End of Lease? (Y/N)	Bargain Purchase Option? (Y/N)	Lease Term in Months	Est. Economic Useful Life in Months	Total Principal Pmts Over Lease Term	FMV of Leased Equip. at Lease Inception	Capital or Operating Lease? (Calculated Field)
BRD JUDGES	985-L2	330	Juvenile Detention	195628	985-L2	6/14/2011	WC5745P	\$260.75	N	N	36	60	9,387.00	\$9,387.00	Capital Lease
BRD JUDGES	985-L2	330	Juvenile Boot Camp	195658	985-L2	6/14/2011	WC5755P	\$468.15	N	N	36	60	16,853.40	\$16,853.40	Capital Lease
6/21/2011	985-L2	60	JP 4 PI 1 Front Off	197063	985-L2	6/21/2011	WC5745P	\$178.63	N	N	36	60	6,430.68	\$6,430.68	Capital Lease
6/21/2011	985-L2	60	JP 4 PI 1 Court Room	197067	985-L2	6/21/2011	WC5225	\$105.92	N	N	36	60	3,813.12	\$3,813.12	Capital Lease
7/19/2011	TASB 299-08	62	JP 1 PI 2	198464	299-08	7/19/2011	RICOH MP3351	\$147.00	N	N	48	60	6,023.00	\$6,023.00	Capital Lease
6/28/2011	TASB 299-08	48	Planning	195978	299-08		Ricoh MP 2851SP	\$160.40	N	N	48	60	7,699.20	\$5,203.00	Capital Lease
7/19/2011	985-L2	140	Tax Office- Alamo	198799	985-L2	7/19/2011	WC3550X	\$64.61	N	N	36	60	2,325.96	\$2,325.00	Capital Lease
7/19/2011	985-L2	9	INDIGENT DEFENSE	199004	985-L2	7/19/2011	WC5225A	\$132.97	N	N	48	60	6,382.56	\$5,030.00	Capital Lease
8/2/2011	985-L2	340	Health Dept	196766	985-L2	8/2/2011	WC5225	\$157.95	N	N	36	60	5,686.20	\$3,813.12	Capital Lease
9/13/2011	TASB 299-08	60	JP 4 PI 1	201709	299-08	9/13/2011	RICOH MP2851	\$98.00	N	N	48	60	4,704.00	\$4,748.00	Capital Lease
10/5/2011	985-L2		139TH D C		985-L2	10/25/2011	WC 5225	\$105.92	N	N	36	60	\$3,813.12	\$3,813.12	Capital Lease
11/1/2011	985-L2		Court @ Law 7		985-L2	11/1/2011	WC7120P	\$252.65	N	N	36	60	\$9,095.40	\$9,095.40	Capital Lease
													\$0.00		