

Hidalgo County
Border Colonia Access Program



Regal Estates Subdivision
Paving and Drainage Improvements Estimate

ATTACHMENT "A"

Description of Work Proposed

ATTACHMENT A
Application for Border Colonia Access Program
Description of Work Proposed

The Regal Estates Subdivision (EDAP #M1080606) project consists of approximately 1280 l.f. of repaving with a proposed typical road section of 8 inches of caliche base and 1.5 inches of asphalt or as determined through geotechnical soil tests. Project also includes associated drainage with road side ditches and all necessary appurtenances.

Colonia Regal Estates Subdivision consists of 1 interior road(s) and approximately 1280 l.f. inadequately paved road that contributes in inadequate drainage and limited access to the Colonia Residents. Please refer to the photograph on **Attachment C** that further illustrate the need and conditions of the Colonia Road

The proposed project involves paving of Thompson Road(s). The proposed project provides the Colonias Residents necessary access to Bentsen Palm Road a paved County Road. Please Refer to **Attachment D and E** that illustrates the Colonias location and access.

The Proposed Project is in a proposed school bus route or maybe considered for a future bus route. Please Refer to **Attachment F**.

ATTACHMENT "B"

Quantity Estimates

ATTACHMENT "C"

Photographs

ATTACHMENT "C"



Regal Estates

Thompson Street

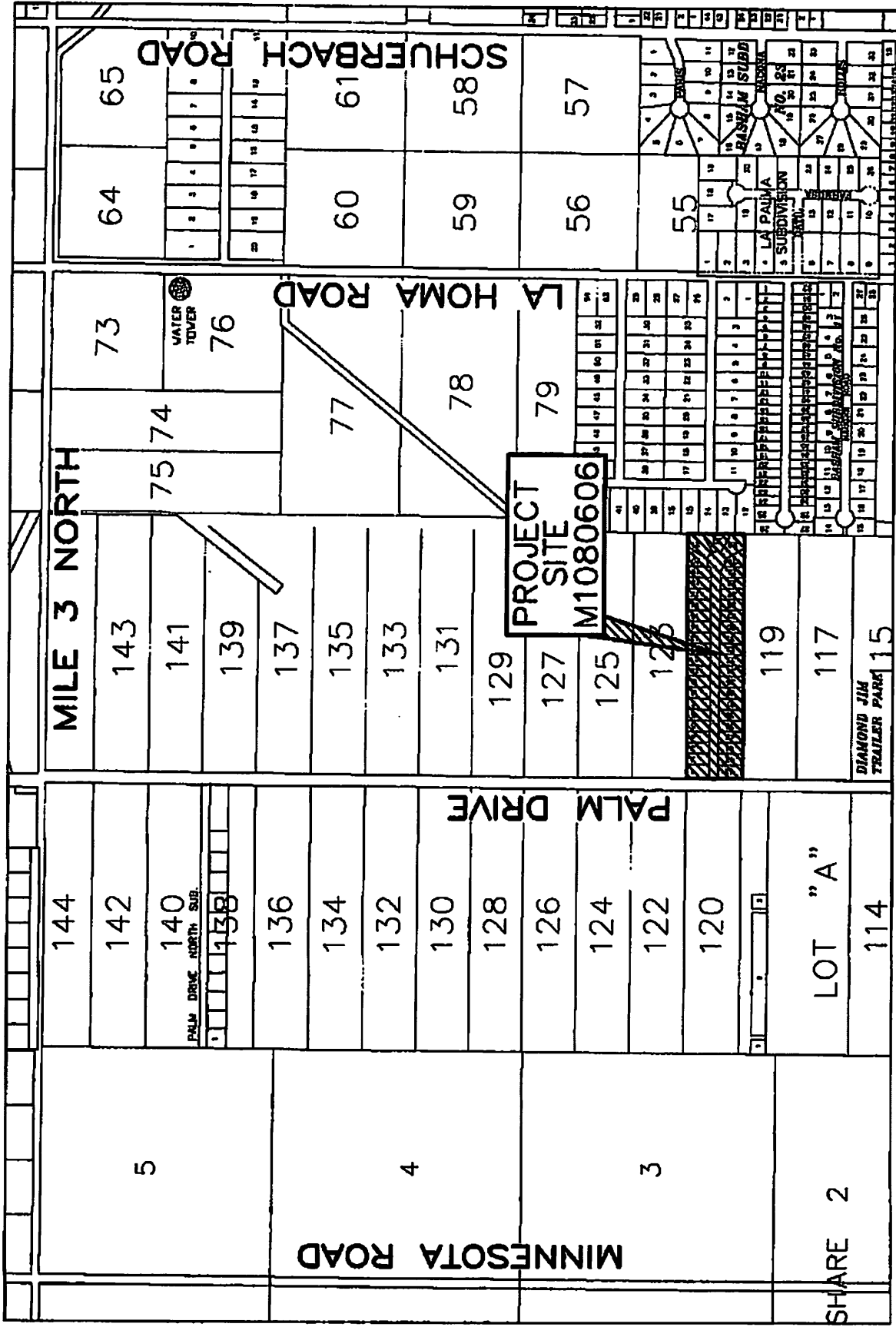
COLONIA ID. No. M1080606

COMMENTS: EXISTING NARROW POORLY PAVED ROADWAY

ATTACHMENT "D"

LOCATION/MAP

ATTACHMENT "D"



LOCATION MAP
REGAL ESTATES

COLONIA ID. NO. M1080606

ATTACHMENT "E"

Subdivision Plat

APPROVED
 12/23/11
 11/23/11

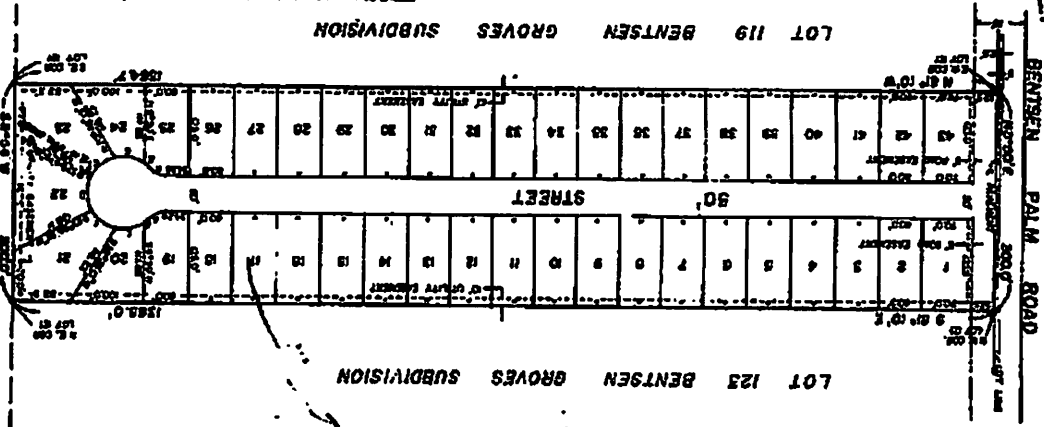
64030

MAP OF
 REGAL ESTATES
 BEING A SUBDIVISION OF 0.40 ACRES
 SITES ALL OF LOT 121
 CENTRAL GROVES SUBD.
 HALLCO COUNTY, TEXAS

4 CO. 1000 FROM PLATINGS - 1981
 2000 WITH 100' WIDE
 10' WIDE FROM CENTER LINE OF EACH
 10' WIDE FROM CENTER LINE OF EACH

TRACT	ACRES	AREA	PERCENT
1	0.01	0.01	2.50
2	0.01	0.01	2.50
3	0.01	0.01	2.50
4	0.01	0.01	2.50
5	0.01	0.01	2.50
6	0.01	0.01	2.50
7	0.01	0.01	2.50
8	0.01	0.01	2.50
9	0.01	0.01	2.50
10	0.01	0.01	2.50
11	0.01	0.01	2.50
12	0.01	0.01	2.50
13	0.01	0.01	2.50
14	0.01	0.01	2.50
15	0.01	0.01	2.50
16	0.01	0.01	2.50
17	0.01	0.01	2.50
18	0.01	0.01	2.50
19	0.01	0.01	2.50
20	0.01	0.01	2.50
21	0.01	0.01	2.50
22	0.01	0.01	2.50
23	0.01	0.01	2.50
24	0.01	0.01	2.50
25	0.01	0.01	2.50
26	0.01	0.01	2.50
27	0.01	0.01	2.50
28	0.01	0.01	2.50
29	0.01	0.01	2.50
30	0.01	0.01	2.50
31	0.01	0.01	2.50
32	0.01	0.01	2.50
33	0.01	0.01	2.50
34	0.01	0.01	2.50
35	0.01	0.01	2.50
36	0.01	0.01	2.50
37	0.01	0.01	2.50
38	0.01	0.01	2.50
39	0.01	0.01	2.50
40	0.01	0.01	2.50
41	0.01	0.01	2.50
42	0.01	0.01	2.50
43	0.01	0.01	2.50
44	0.01	0.01	2.50
45	0.01	0.01	2.50
46	0.01	0.01	2.50
47	0.01	0.01	2.50
48	0.01	0.01	2.50
49	0.01	0.01	2.50
50	0.01	0.01	2.50
51	0.01	0.01	2.50
52	0.01	0.01	2.50
53	0.01	0.01	2.50
54	0.01	0.01	2.50
55	0.01	0.01	2.50
56	0.01	0.01	2.50
57	0.01	0.01	2.50
58	0.01	0.01	2.50
59	0.01	0.01	2.50
60	0.01	0.01	2.50
61	0.01	0.01	2.50
62	0.01	0.01	2.50
63	0.01	0.01	2.50
64	0.01	0.01	2.50
65	0.01	0.01	2.50
66	0.01	0.01	2.50
67	0.01	0.01	2.50
68	0.01	0.01	2.50
69	0.01	0.01	2.50
70	0.01	0.01	2.50
71	0.01	0.01	2.50
72	0.01	0.01	2.50
73	0.01	0.01	2.50
74	0.01	0.01	2.50
75	0.01	0.01	2.50
76	0.01	0.01	2.50
77	0.01	0.01	2.50
78	0.01	0.01	2.50
79	0.01	0.01	2.50
80	0.01	0.01	2.50
81	0.01	0.01	2.50
82	0.01	0.01	2.50
83	0.01	0.01	2.50
84	0.01	0.01	2.50
85	0.01	0.01	2.50
86	0.01	0.01	2.50
87	0.01	0.01	2.50
88	0.01	0.01	2.50
89	0.01	0.01	2.50
90	0.01	0.01	2.50
91	0.01	0.01	2.50
92	0.01	0.01	2.50
93	0.01	0.01	2.50
94	0.01	0.01	2.50
95	0.01	0.01	2.50
96	0.01	0.01	2.50
97	0.01	0.01	2.50
98	0.01	0.01	2.50
99	0.01	0.01	2.50
100	0.01	0.01	2.50

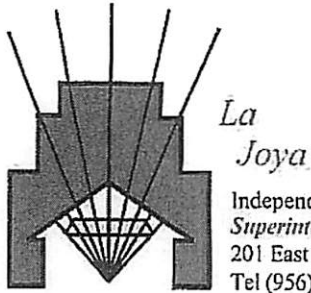
APPROVED
 FOR RECORDING
 11/23/11



Attachment "E"

ATTACHMENT "F"

District School Bus Route Correspondence



Independent School District
Superintendent of Schools
 201 East Expressway 83, La Joya, TX 78560
 Tel (956) 580-5000 Fax (956) 580-5444

Board of Trustees
 Rita Garza-Uresti, *President*
 Jose A. "Fito" Salinas, *Vice-President*
 John Valente Alaniz, *Secretary*
 Joe Aguilar, *Member*
 Arturo Gonzalez, Jr., *Member*
 Joel Garcia, *Member*
 Elma Garza, *Member*

March 25, 2008

Mr. Jack Foster
 Texas Department of Transportation
 600 West Expressway 83
 P.O. Drawer EE
 Pharr TX 78577

RE: Border Colonia Access Program – Bus Route Designations

Dear Mr. Foster:

Our school district serves the following residents in the colonias identified below:

Colonia	T.W.D.B. ID #
Ariel Hinojosa	M1080055
Basham #18	M1080082
Benavides Subdivision No. 2	M1080097
Blue Star Enterprises Subdivision No. 2	M1080111
Casa De Los Vecinos Subdivision	M1080141
Havana Lomas Subdivision No. 4	M1080310
Havana Lomas Subdivision No. 5	M1080311
Hilda Subdivision No. 2	M1080324
King Ranch Subdivision	M1080357
La Hermosa Subdivision	M1080375
La Homa Groves Estates	M1080380
La Suena Subdivision	M1080397
Las Cuevas	M1080409
Loma Linda Heights Subdivision	M1080421
Ramirez Subdivision	M1080587
Ramirez Subdivision No. 2	M1080588
Ramirez Subdivision No. 3	M1080589
Randolph Barnett Subdivision	M1080600
Regal Estates	M1080606

This district is responsible for the transportation of the children of these colonias to and from their respective schools throughout our District. Road conditions in these colonias limit the ability of our transportation personnel to reach the children of the colonia creating a hardship on these families to get their children to school.

Currently the public streets in these colonias serve as bus routes where our buses can maneuver. Those areas that our buses are not accessible are not served, but if the roadways were improved our bus routes would extend into the colonias to serve the children of the area. The paving of roadways in the above-identified colonias would greatly enhance and expand our capability to serve the children of the Colonias.

Thank you in advance for your assistance and should you have any questions or require further information please do not hesitate to contact me at (956) 580-6050.

Sincerely,



Dr. Alda T. Benavides, Superintendent
La Joya I.S.D.

CC: Mr. Agapito Vargas Jr., Executive Director Hidalgo County Colonia Access Program
Project Files