

# Hidalgo County Head Start Program

## Policy Council Consent Agenda

**DATE:** October 19, 2010

**SUBJECT:** Approval of the Learning Accomplishment Profile Diagnostic (LAP-D) Report - Mid Assessment

**RATIONALE/NEED:** The Learning Accomplishment Profile Diagnostic (LAP-D) is administered three (3) times during the school year. These are the pre assessment results.

**RECOMMENDATION:** Administration recommends approval.

**COST:** N/A

**RELATED INFORMATION INCLUDES:** Mid LAP-D Report

\*\*\*\*\*

**INITIATED BY:** Nora S. Munoz, Assistant Program Director 

**REVIEWED BY:** Teresa Flores, Executive Director

**EXECUTIVE DIRECTOR'S APPROVAL:** 

---

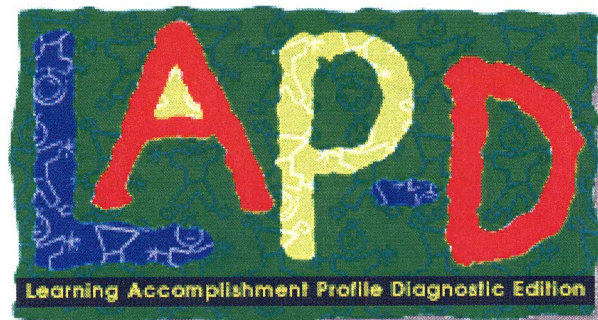
**Head Start Outcomes Report for Hidalgo County Head Start**

**Based on Results From the LAP-D Assessment**

---

**Includes assessments for school year 2011 - 2012**

Pre.  Mid  Post

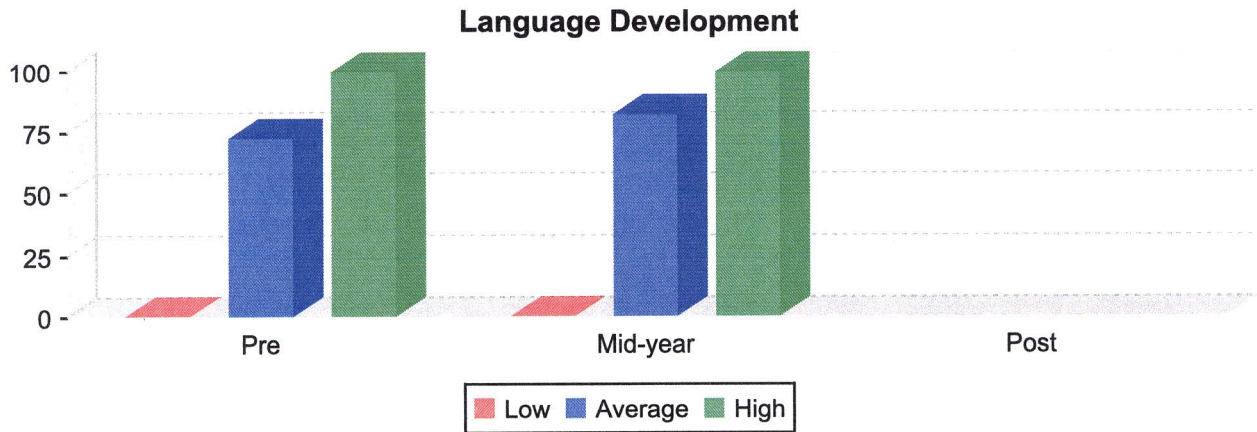


The following table summarizes the progress of children enrolled in Hidalgo County Head Start based on Head Start's Child Outcomes Framework for the selected checkpoints. Each score represents the average number of milestones achieved expressed as a percentage of the total number of milestones correlated to each domain. Gains and/or losses are based on the difference between the average percentage scores at each checkpoint. Information on how the LAP-D is correlated to the Head Start Child Outcomes Framework may be found in the documents section of the application.

Program Name: Hidalgo County Head Start

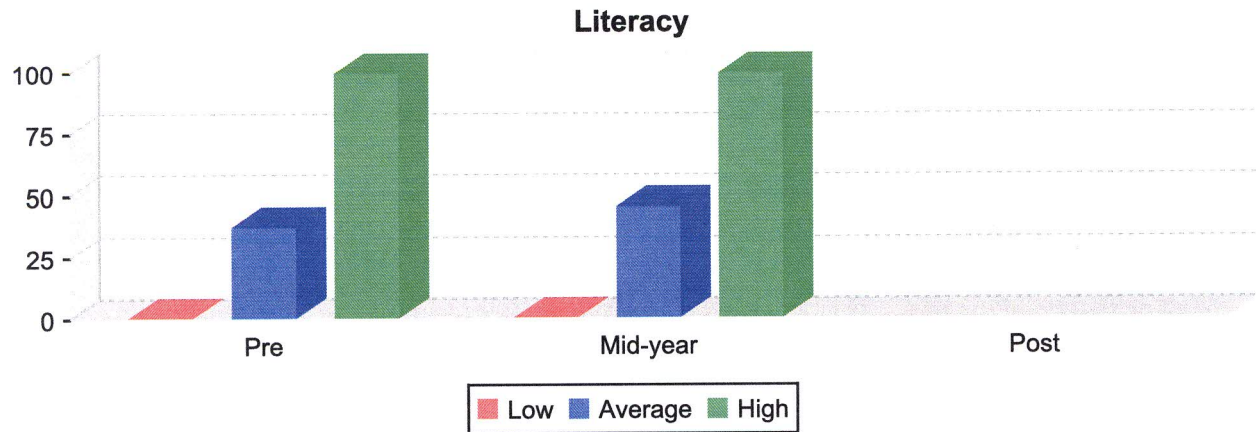
Domain	Checkpoint			Change		
	Pre	Mid-year	Post	Pre/Mid	Mid/Post	Pre/Post
Language Development	72.64	82.30		9.66		
Literacy	37.31	45.38		8.07		
Mathematics	52.22	67.21		14.99		
Science	32.74	50.72		17.99		
Creative Arts	0.00	0.00		0.00		
Social & Emotional Development	0.00	0.00		0.00		
Approaches to Learning	30.03	51.52		21.49		
Physical Health & Development	47.95	48.86		0.91		

The following graph reflects the range of scores for children enrolled in Hidalgo County Head Start based on the Head Start Child Outcomes Framework. Graphs and the numbers represented by the graphs are based on highest score, lowest score and average score for all children in the program with assessment results during that checkpoint.



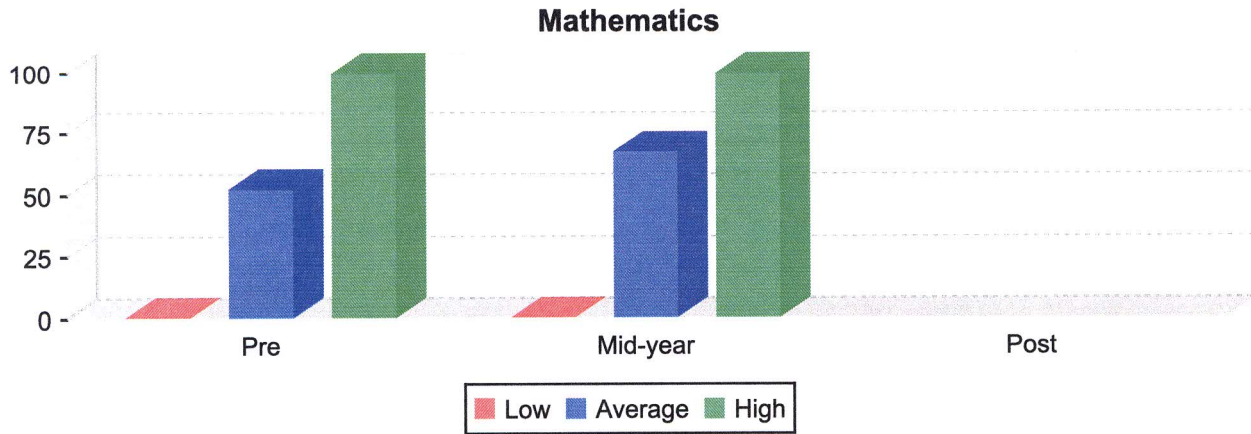
	<u>Pre</u>		<u>Mid-year</u>		<u>Post</u>
High Percentage	100.00		100.00		
Average Percentage	72.64		82.30		
Low Percentage	0.00		0.00		
Average Percentage Gain <Loss>			9.66		
Total Children in Program:	3,758	Total No. Sites:	43	Total No. Classrooms:	199
Children with Assessment data	3,757		3,480		0

The following graph reflects the range of scores for children enrolled in Hidalgo County Head Start based on the Head Start Child Outcomes Framework. Graphs and the numbers represented by the graphs are based on highest score, lowest score and average score for all children in the program with assessment results during that checkpoint.



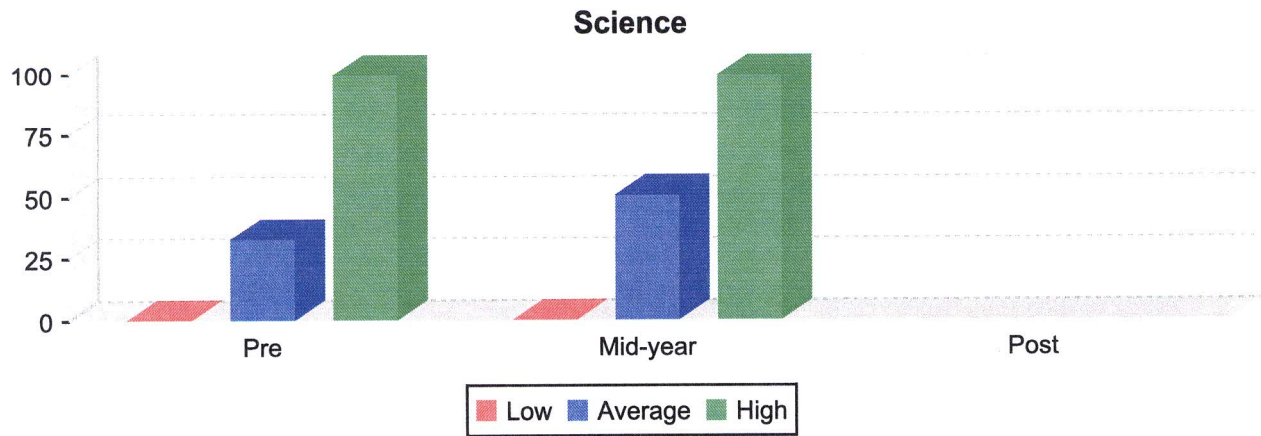
	<u>Pre</u>		<u>Mid-year</u>		<u>Post</u>
High Percentage	100.00		100.00		
Average Percentage	37.31		45.38		
Low Percentage	0.00		0.00		
Average Percentage Gain <Loss>			8.07		
Total Children in Program:	3,758	Total No. Sites:	43	Total No. Classrooms:	199
Children with Assessment data	3,757		3,480		0

The following graph reflects the range of scores for children enrolled in Hidalgo County Head Start based on the Head Start Child Outcomes Framework. Graphs and the numbers represented by the graphs are based on highest score, lowest score and average score for all children in the program with assessment results during that checkpoint.



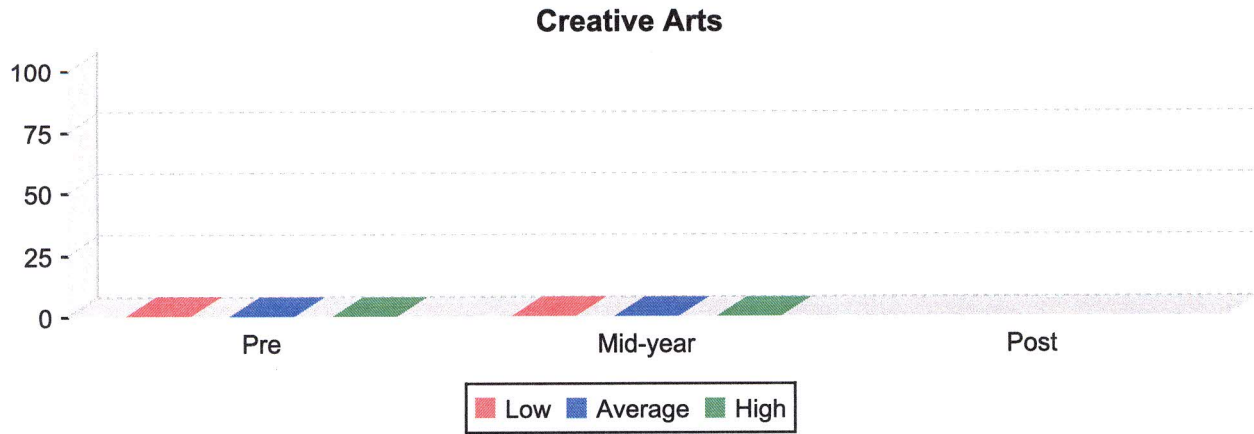
	<u>Pre</u>		<u>Mid-year</u>		<u>Post</u>
High Percentage	100.00		100.00		
Average Percentage	52.22		67.21		
Low Percentage	0.00		0.00		
Average Percentage Gain <Loss>			14.99		
Total Children in Program:	3,758	Total No. Sites:	43	Total No. Classrooms:	199
Children with Assessment data	3,757		3,480		0

The following graph reflects the range of scores for children enrolled in Hidalgo County Head Start based on the Head Start Child Outcomes Framework. Graphs and the numbers represented by the graphs are based on highest score, lowest score and average score for all children in the program with assessment results during that checkpoint.



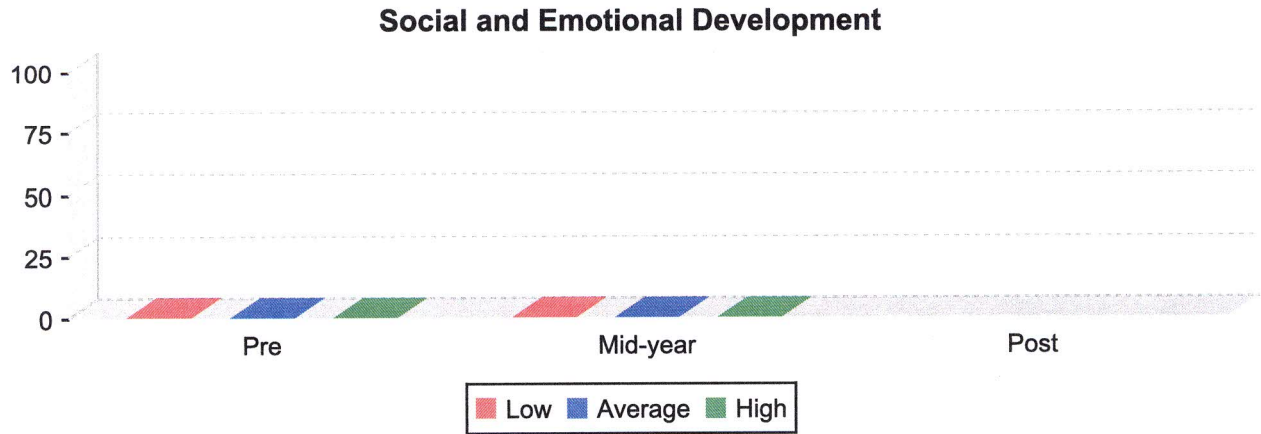
	<u>Pre</u>		<u>Mid-year</u>		<u>Post</u>
High Percentage	100.00		100.00		
Average Percentage	32.74		50.72		
Low Percentage	0.00		0.00		
Average Percentage Gain <Loss>			17.99		
Total Children in Program:	3,758	Total No. Sites:	43	Total No. Classrooms:	199
Children with Assessment data	3,757		3,480		0

The following graph reflects the range of scores for children enrolled in Hidalgo County Head Start based on the Head Start Child Outcomes Framework. Graphs and the numbers represented by the graphs are based on highest score, lowest score and average score for all children in the program with assessment results during that checkpoint.



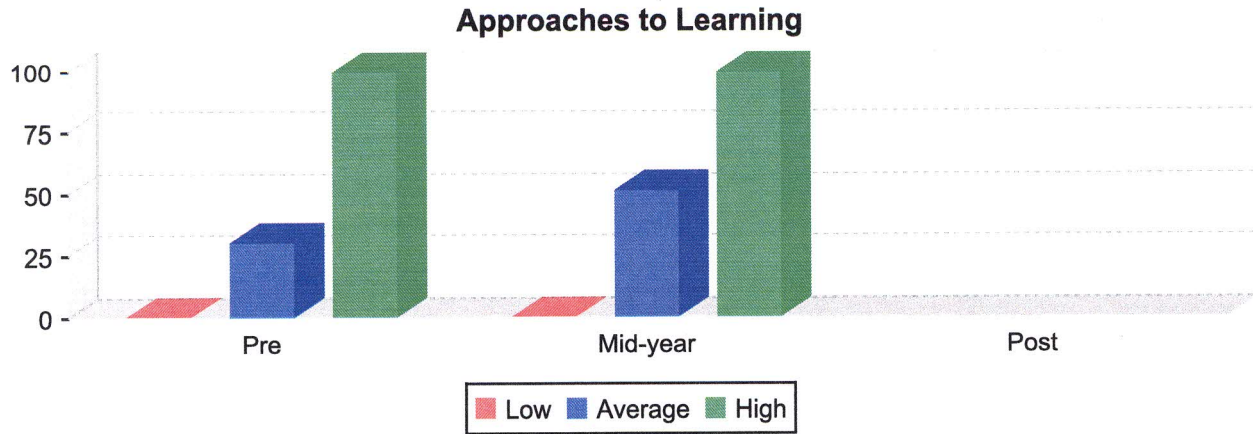
	<u>Pre</u>		<u>Mid-year</u>		<u>Post</u>
High Percentage	0.00		0.00		
Average Percentage	0.00		0.00		
Low Percentage	0.00		0.00		
Average Percentage Gain <Loss>			0.00		
Total Children in Program:	3,758	Total No. Sites:	43	Total No. Classrooms:	199
Children with Assessment data	2,764		3,480		0

The following graph reflects the range of scores for children enrolled in Hidalgo County Head Start based on the Head Start Child Outcomes Framework. Graphs and the numbers represented by the graphs are based on highest score, lowest score and average score for all children in the program with assessment results during that checkpoint.



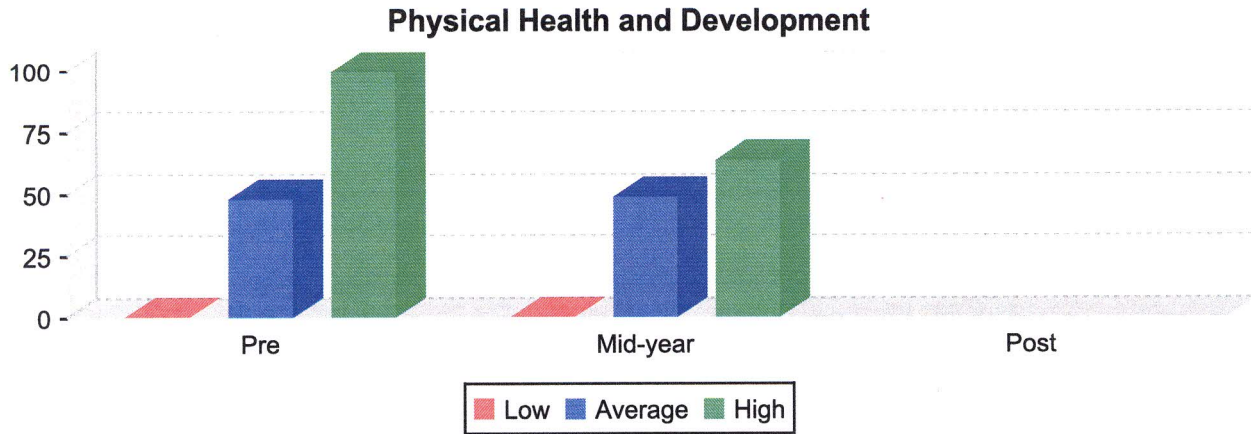
	<u>Pre</u>		<u>Mid-year</u>		<u>Post</u>
High Percentage	0.00		0.00		
Average Percentage	0.00		0.00		
Low Percentage	0.00		0.00		
Average Percentage Gain <Loss>			0.00		
Total Children in Program:	3,758	Total No. Sites:	43	Total No. Classrooms:	199
Children with Assessment data	2,764		3,480		0

The following graph reflects the range of scores for children enrolled in Hidalgo County Head Start based on the Head Start Child Outcomes Framework. Graphs and the numbers represented by the graphs are based on highest score, lowest score and average score for all children in the program with assessment results during that checkpoint.



	<u>Pre</u>		<u>Mid-year</u>		<u>Post</u>
High Percentage	100.00		100.00		
Average Percentage	30.03		51.52		
Low Percentage	0.00		0.00		
Average Percentage Gain <Loss>			21.49		
Total Children in Program:	3,758	Total No. Sites:	43	Total No. Classrooms:	199
Children with Assessment data	3,757		3,480		0

The following graph reflects the range of scores for children enrolled in Hidalgo County Head Start based on the Head Start Child Outcomes Framework. Graphs and the numbers represented by the graphs are based on highest score, lowest score and average score for all children in the program with assessment results during that checkpoint.



	<u>Pre</u>		<u>Mid-year</u>		<u>Post</u>
High Percentage	100.00		63.86		
Average Percentage	47.95		48.86		
Low Percentage	0.00		0.00		
Average Percentage Gain <Loss>			0.91		
Total Children in Program:	3,758	Total No. Sites:	43	Total No. Classrooms:	199
Children with Assessment data	3,757		3,480		0