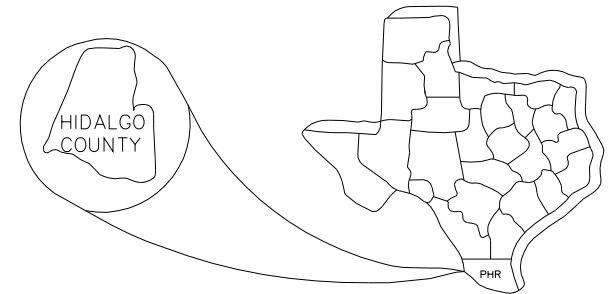


HIDALGO COUNTY PRECINCT NO. 1

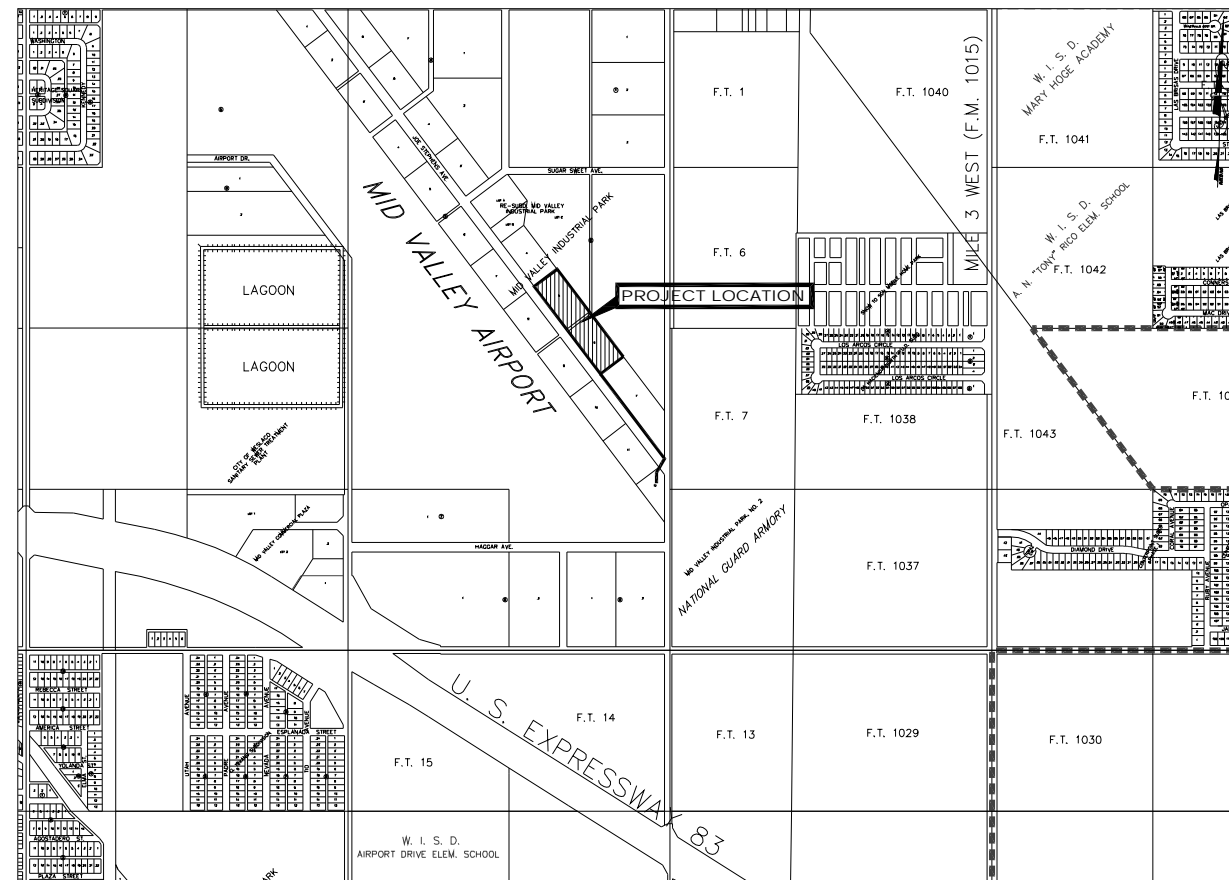
PROJECT: CONSTRUCTION PLANS FOR CONSTABLE OFFICE PARKING LOT	SHEET NO. 1
PROJECT NO.: P-740	OF 14
CITY: WESLACO, TEXAS	

CONSTRUCTION PLANS FOR CONSTABLE OFFICE PARKING LOT AND OFF-SITE DRAINAGE



INDEX OF SHEETS

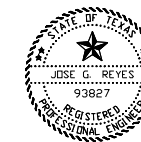
Sheet No.	Description
1.	COVER SHEET
2.	EXISTING SITE PLAN
3.	DEMOLITION PLAN
4.	PROPOSED SITE PLAN
5.	PROPOSED PAVING & GRADING PLAN
6.	PROPOSED DIMENSION PLAN
7.	PROPOSED LIGHTING PLAN
8.	PROPOSED FENCING PLAN
9.	PROPOSED UTILITY PLAN
10-12.	OFF-SITE DRAINAGE
13.	WATER AND SEWER DETAILS
14.	PAVING AND DRAINAGE DETAILS



LOCATION MAP
N.T.S.

HIDALGO COUNTY OFFICIALS

RAMON GARCIA	COUNTY JUDGE
JOEL QUINTANILLA	PCT 1 COMMISSIONER
HECTOR "TITO" PALACIOS	PCT 2 COMMISSIONER
JOE M. FLORES	PCT 3 COMMISSIONER
JOSEPH PALACIOS	PCT 4 COMMISSIONER



JOSE G. REYES, PE _____ DATE _____

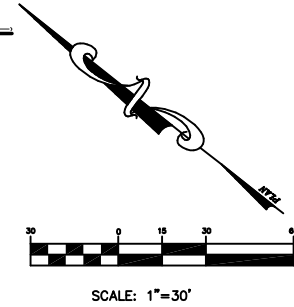
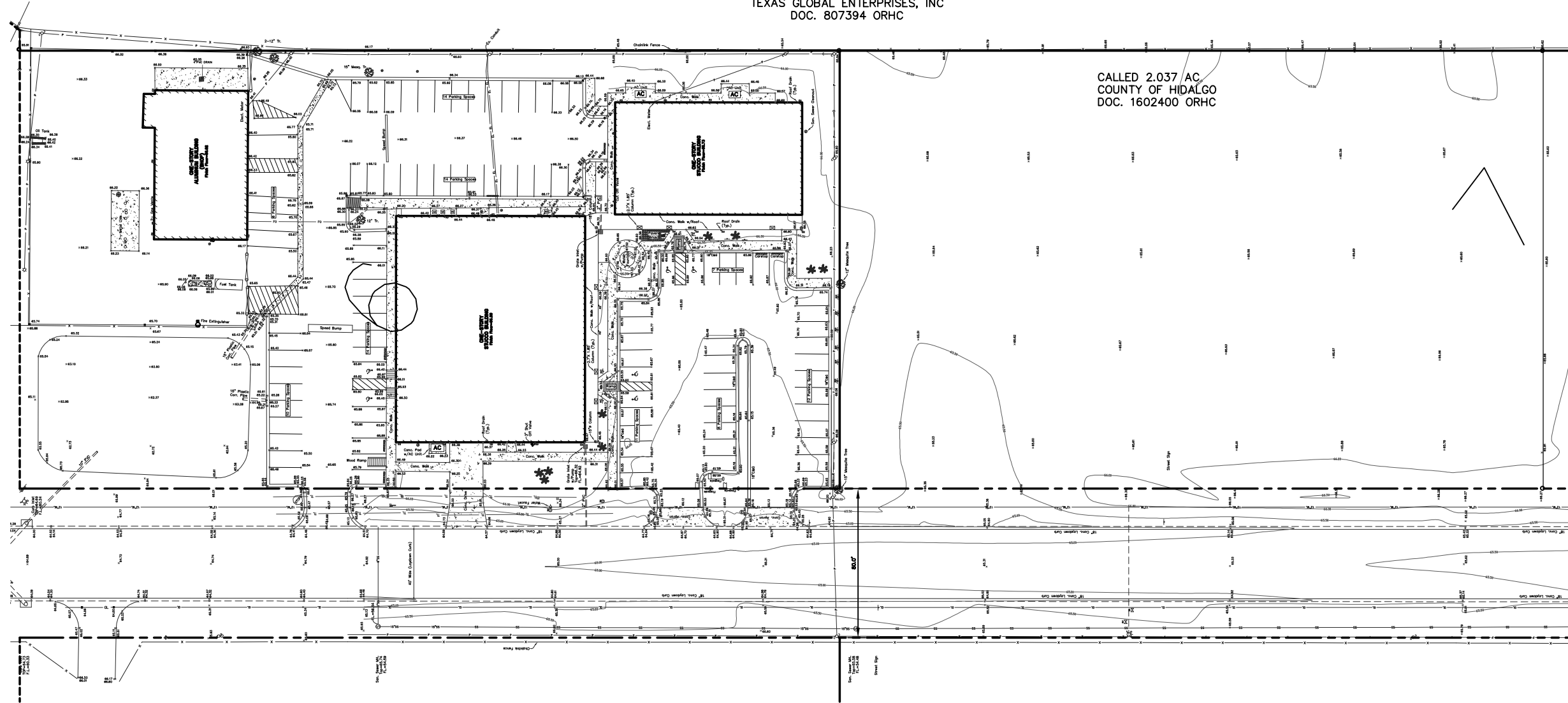


913 E. Harrison, Suite 14 Harlingen, Texas 78550
 2020 E. Expressway 83 Mercedes, Texas 78570
 1100 Jasmine Ave. Suite 107 McAllen, Texas 78501
 Phone: (956) 425-1330 Phone: (956) 565-4637 Phone: (956) 682-3812
 Fax: (956) 425-1685 Fax: (956) 565-4636 Fax: (956) 682-3813

TEXAS REGISTERED ENGINEERING FIRM F-8017

TEXAS GLOBAL ENTERPRISES, INC
DOC. 807394 ORHC

CALLED 2.037 AC
COUNTY OF HIDALGO
DOC. 1602400 ORHC



LEGEND	
	1/2" Iron Pin Fd.
	Power Pole
	Overhead Powerline
	Overhead Telephone Line
	Street Sign
	Water Meter
	Fire Hydrant
	Gas Line
	Water Line
	Sewer Line
	R.O.W. Line
	Guy Wire
	Gas Connection
	Water Valve
	Drainage line
	Sewer Manhole
	Storm Manhole
	Curb Inlet
	Grate Inlet
	Existing Contours
	Telephone Manhole
	Gas Valve
	Chanlink Fence

Checked By:	P.C.
Approved By:	J.G.R.
Drawn By:	JZ
Date:	NOV. 2011

NO.	REVISION	DESCRIPTION	DATE



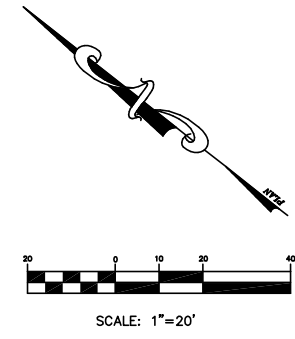
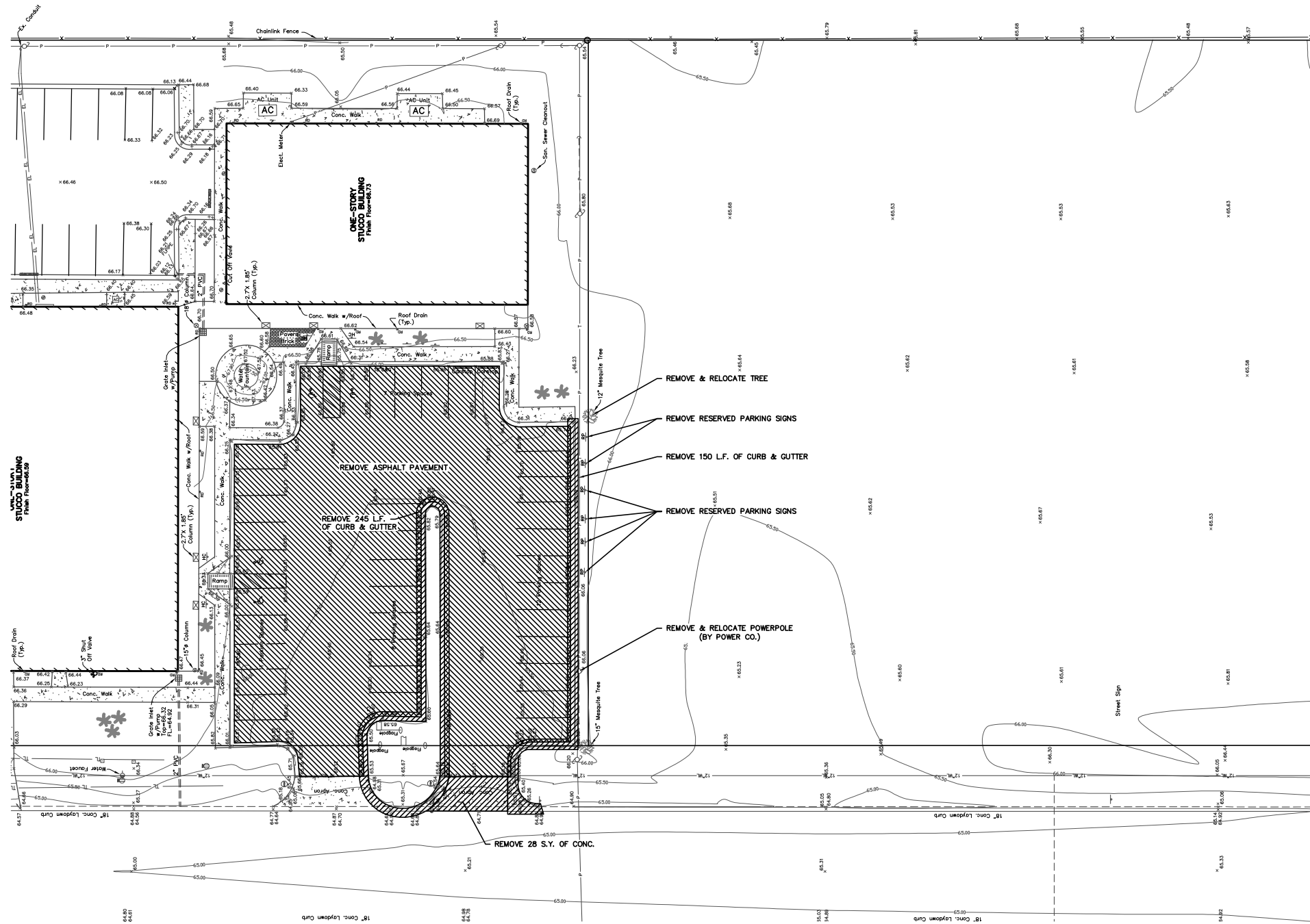
HIDALGO COUNTY
PRECINCT No. 1
CONSTABLE OFFICE
SITE PLAN

GM GUZMAN & MUÑOZ
ENGINEERING AND SURVEYING, INC.
HARLINGEN - MERCEDAS - McALLEN
913 E. Harrison, Suite 14 # 2020 E. EXPRESSWAY 83 McAllen, Texas 78501
Harlingen, Texas 78550 Mercedes, Texas 78570
Phone: (956) 425-1330 Phone: (956) 565-4637 Phone: (956) 682-3812
Fax: (956) 425-1685 Fax: (956) 565-4636 Fax: (956) 682-3813

TEXAS REGISTERED
ENGINEERING FIRM
F-907

Project No. P740
Sheet 2 of 14

GMES EXPRESSLY RESERVES ITS COMMON LAW COPYRIGHT AND OTHER PROPERTY RIGHTS IN THIS DOCUMENT. THIS DOCUMENT SHALL NOT BE REPRODUCED, COPIED, CHANGED OR DISCLOSED IN ANY FORM OR MANNER WHATSOEVER WITHOUT FIRST OBTAINING THE EXPRESSED WRITTEN CONSENT OF GMES © 2011.



LEGEND			
○	1/2" Iron Pin Fd.	⌘	Gas Connection
⊕	Power Pole	⊕	Water Valve
—P—	Overhead Powerline	— — — —	Drainage line
—T—	Overhead Telephone Line	⊙	Sewer Manhole
—S—	Street Sign	⊕	Storm Manhole
⊕	Water Meter	⊕	Curb Inlet
⊕	Fire Hydrant	⊕	Grate Inlet
—G—	Gas Line	---	Existing Contours
—W—	Water Line	⊕	Telephone Manhole
—S—	Sewer Line	⊕	Gas Valve
---	R.O.W. Line	○—○	Chainlink Fence
—	Guy Wire		

NOTE:
 1. ALL EXISTING UTILITIES IN CONFLICT MUST BE DEMOLISHED AND DISPOSED AS PER THE CITY AND STATE REGULATIONS.
 2. ALL AND ANY PERMIT REQUIREMENTS ARE RESPONSIBILITY OF THE CONTRACTOR.
 3. THE CONTRACTOR SHALL BE RESPONSIBLE FOR ALL DEMOLITION COSTS AND SHALL BE RESPONSIBLE TO PROVIDE A COMPLETELY CLEARED SITE FREE FROM ALL DEBRIS AND EXISTING BUILDING REMNANTS, FOUNDATION, SERVICE EQUIPMENT, PAVEMENT, ABANDONED UTILITIES, UNDER GROUND PIPES, AND ANY APPURTENANCES ASSOCIATED WITH EXISTING IMPROVEMENTS, STRUCTURES, SYSTEMS TO BE DEMOLISHED & REMOVED FOR THE PROPOSED DEVELOPMENTS. SITE MUST BE APPROVED BY ENGINEER PRIOR TO COMMENCEMENT OF THE PROPOSED DEVELOPMENT.

TEXAS GAS SERVICE
 APPROXIMATE LOCATION OF GAS LINES FOR FIELD VERIFICATION, PLEASE CALL
 1-800-344-8377
 CALL BEFORE YOU DIG!

NOTE 1 !
 The location of all existing utilities shown on these plans are based upon record information only and may not match conditions encountered in the field. Contractor shall verify field location of all utility crossings (overhead electrical, water, gas, telephone, lines, Fiber Optic Cable, sewerlines etc., and relocate as necessary) prior to begin the construction.

Checked By:	P.C.
Approved By:	J.G.R.
Drawn By:	J.M.
Date:	FEB., 2012
Revision:	DATE
DESCRIPTION	
NO.	

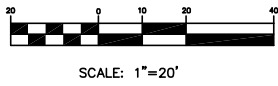
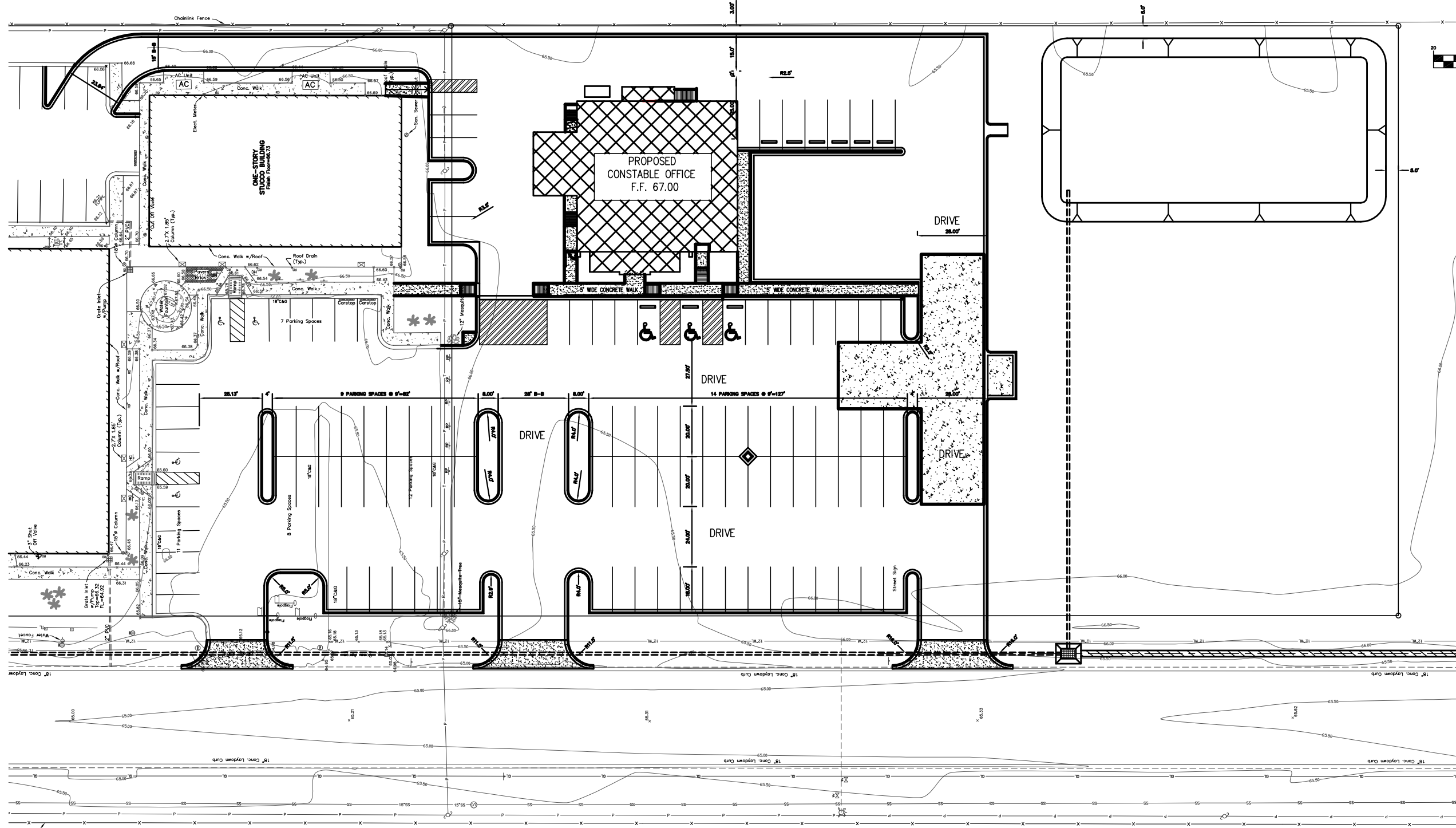


**HIDALGO COUNTY
 PRECINCT No. 1
 CONSTABLE OFFICE
 DEMOLITION PLAN**

GM **GUZMAN & MUÑOZ**
 ENGINEERING AND SURVEYING, INC.
 HARLINGEN - MERCEDES - McALLEN
 913 E. Harrison, Suite 14 89 2020 E. EXPRESSWAY 83 McAllen, Texas 78501
 Harlingen, Texas 78500 Mercedes, Texas 78570
 Phone: (956) 425-1330 Phone: (956) 565-4637
 Fax: (956) 425-1685 Fax: (956) 565-4636

TEXAS REGISTERED
 ENGINEERING FIRM
F-807

GMES EXPRESSLY RESERVES ITS COMMON LAW COPYRIGHT AND OTHER PROPERTY RIGHTS IN THIS DOCUMENT. THIS DOCUMENT SHALL NOT BE REPRODUCED, COPIED, CHANGED OR DISCLOSED IN ANY FORM OR MANNER WHATSOEVER WITHOUT FIRST OBTAINING THE EXPRESSED WRITTEN CONSENT OF GMES © 2011.



Checked By:	P.C.
Approved By:	J.G.R.
Drawn By:	J.M.
Date:	FEB., 2012

NO.	DATE	DESCRIPTION



**HIDALGO COUNTY
PRECINCT No. 1
CONSTABLE OFFICE
PROPOSED SITE PLAN**

GM **GUZMAN & MUÑOZ**
ENGINEERING AND SURVEYING, INC.
HARLINGEN - MERCEDÉS - McALLEN

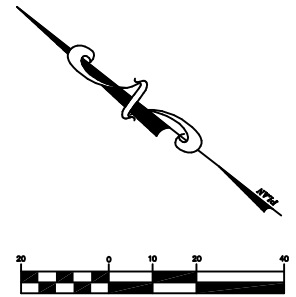
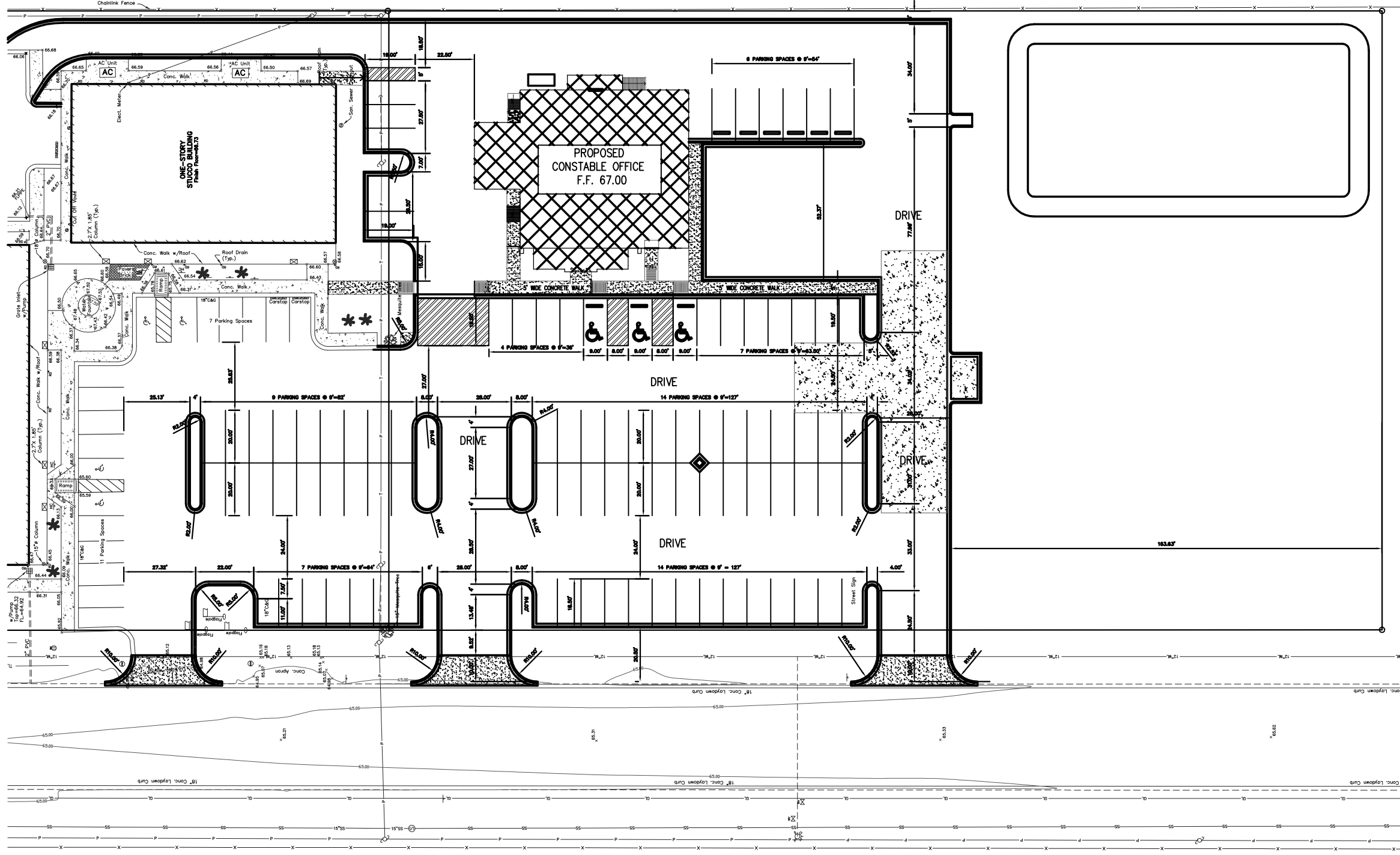
913 E. Harrison, Suite 14 B 2020 E. EXPRESSWAY 83 McAllen, Texas 78501
Harlingen, Texas 78570 Mercedes, Texas 78570
Phone: (956) 425-1330 Phone: (956) 565-4637 Phone: (956) 682-3812
Fax: (956) 425-1685 Fax: (956) 565-4636 Fax: (956) 682-3813

TEXAS REGISTERED
ENGINEERING FIRM
F-807

Project No. **P740**
Sheet **4** of **14**

GMES EXPRESSLY RESERVES ITS COMMON LAW COPYRIGHT AND OTHER PROPERTY RIGHTS IN THIS DOCUMENT. THIS DOCUMENT SHALL NOT BE REPRODUCED, COPIED, CHANGED OR DISCLOSED IN ANY FORM OR MANNER WHATSOEVER WITHOUT FIRST OBTAINING THE EXPRESSED WRITTEN CONSENT OF GMES © 2011.

LEGEND			
○	1/2" Iron Pin Fd.	⊕	Gas Connection
⊕	Power Pole	⊕	Water Valve
—	Overhead Powerline	—	Drainage line
—	Overhead Telephone Line	⊕	Sewer Manhole
—	Street Sign	⊕	Storm Manhole
⊕	Water Meter	⊕	Curb Inlet
⊕	Fire Hydrant	⊕	Grate Inlet
—	Gas Line	---	Existing Contours
—	Water Line	⊕	Telephone Manhole
—	Sewer Line	⊕	Gas Valve
—	R.O.W. Line	○	Chainlink Fence
—	Guy Wire		



SCALE: 1"=20'

LEGEND

○	1/2" Iron Pin Fd.	⊕	Gas Connection
⊕	Power Pole	⊕	Water Valve
—P—	Overhead Powerline	— —	Drainage line
—T—	Overhead Telephone Line	⊕	Sewer Manhole
—S—	Street Sign	⊕	Storm Manhole
⊕	Water Meter	⊕	Curb Inlet
⊕	Fire Hydrant	⊕	Grate Inlet
—G—	Gas Line	---X---	Existing Contours
—W—	Water Line	⊕	Telephone Manhole
—S—	Sewer Line	⊕	Gas Valve
—R.O.W.---	R.O.W. Line	—X—	Chanlink Fence
—G—	Guy Wire		

Checked By: P.C.
 Approved By: J.G.R.
 Drawn By: J.M.
 Date: FEB., 2012

NO.	REVISION	DESCRIPTION	DATE



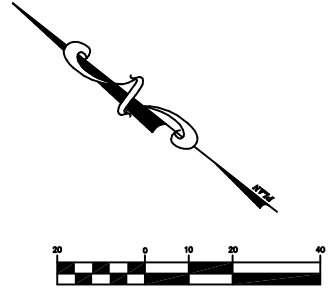
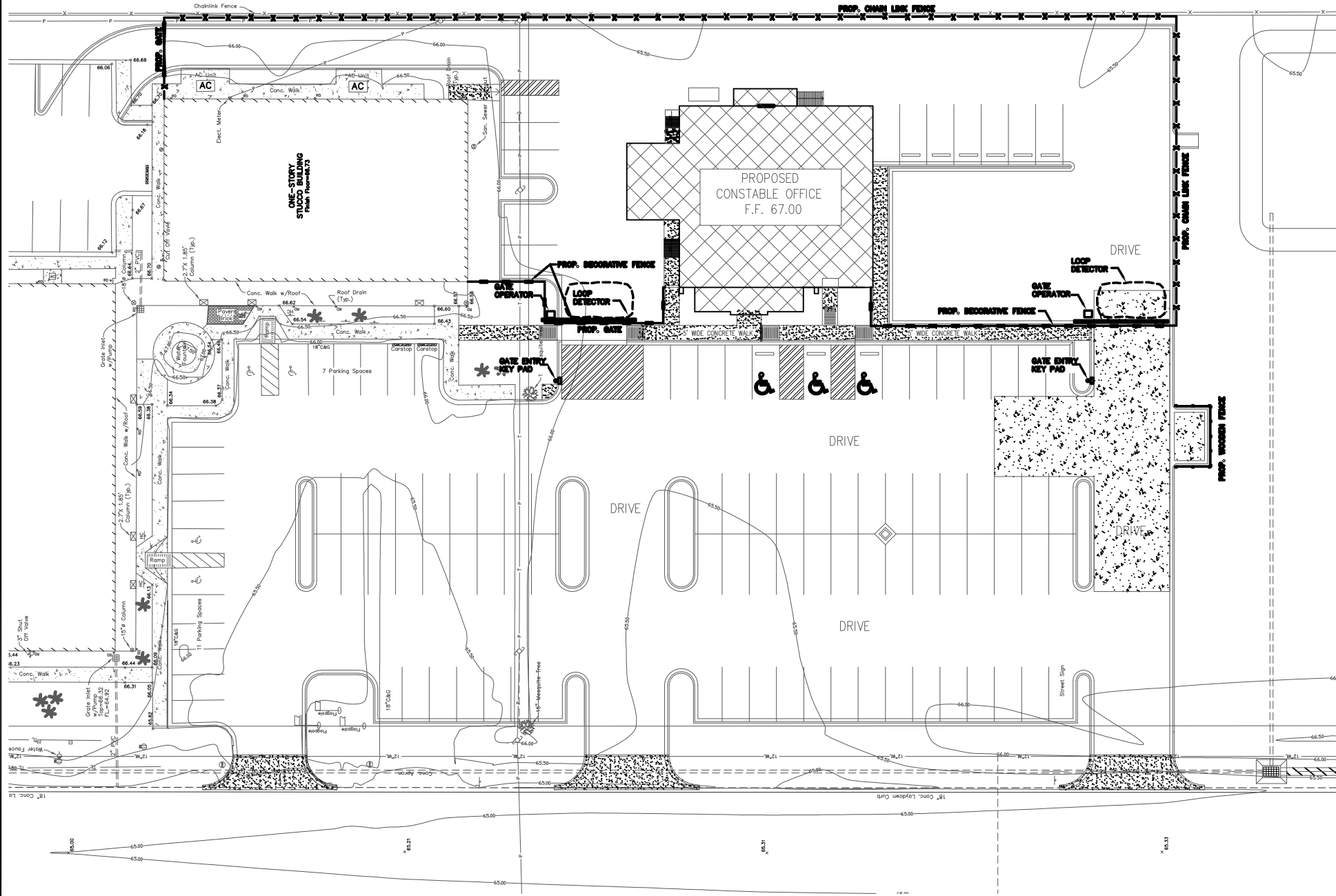
HIDALGO COUNTY
 PRECINCT No. 1
 CONSTABLE OFFICE
 DIMENSION PLAN

GM GUZMAN & MUÑOZ
 ENGINEERING AND SURVEYING, INC.
 HARLINGEN - MERCEDES - McALLEN
 913 E. Harrison, Suite 14 81 2020 E. EXPRESSWAY 83 McAllen, Texas 78501
 Harlingen, Texas 78550 Mercedes, Texas 78570
 Phone: (956) 425-1330 Phone: (956) 565-4637 Phone: (956) 682-3812
 Fax: (956) 425-1685 Fax: (956) 565-4636 Fax: (956) 682-3813

TEXAS REGISTERED
 ENGINEERING FIRM
 F-907

Project No. P740
 Sheet 6 of 14

GMES EXPRESSLY RESERVES ITS COMMON LAW COPYRIGHT AND OTHER PROPERTY RIGHTS IN THIS DOCUMENT. THIS DOCUMENT SHALL NOT BE REPRODUCED, COPIED, CHANGED OR DISCLOSED IN ANY FORM OR MANNER WHATSOEVER WITHOUT FIRST OBTAINING THE EXPRESSED WRITTEN CONSENT OF GMES © 2011.



SCALE: 1"=20'

LEGEND	
	1/2" Iron Pin Fd.
	Power Pole
	Overhead Powerline
	Overhead Telephone Line
	Street Sign
	Water Meter
	Fire Hydrant
	Gas Line
	Water Line
	Sewer Line
	R.O.W. Line
	Guy Wire
	Gas Connection
	Water Valve
	Drainage line
	Sewer Manhole
	Storm Manhole
	Curb Inlet
	Grate Inlet
	Existing Contours
	Telephone Manhole
	Gas Valve
	Chainlink Fence



NOTES:
 1. SEE SECURITY CARD ACCESS BY MEP
 2. SEE CONDUIT DESIGN BY MEP
 3. EQUIPMENT TO BE PROVIDED BY OWNER

Checked By:	P.C.
Approved By:	J.G.R.
Drawn By:	J.Z.
Date:	NOV. 2011
Revision:	DATE
DESCRIPTION	DATE
NO.	DATE



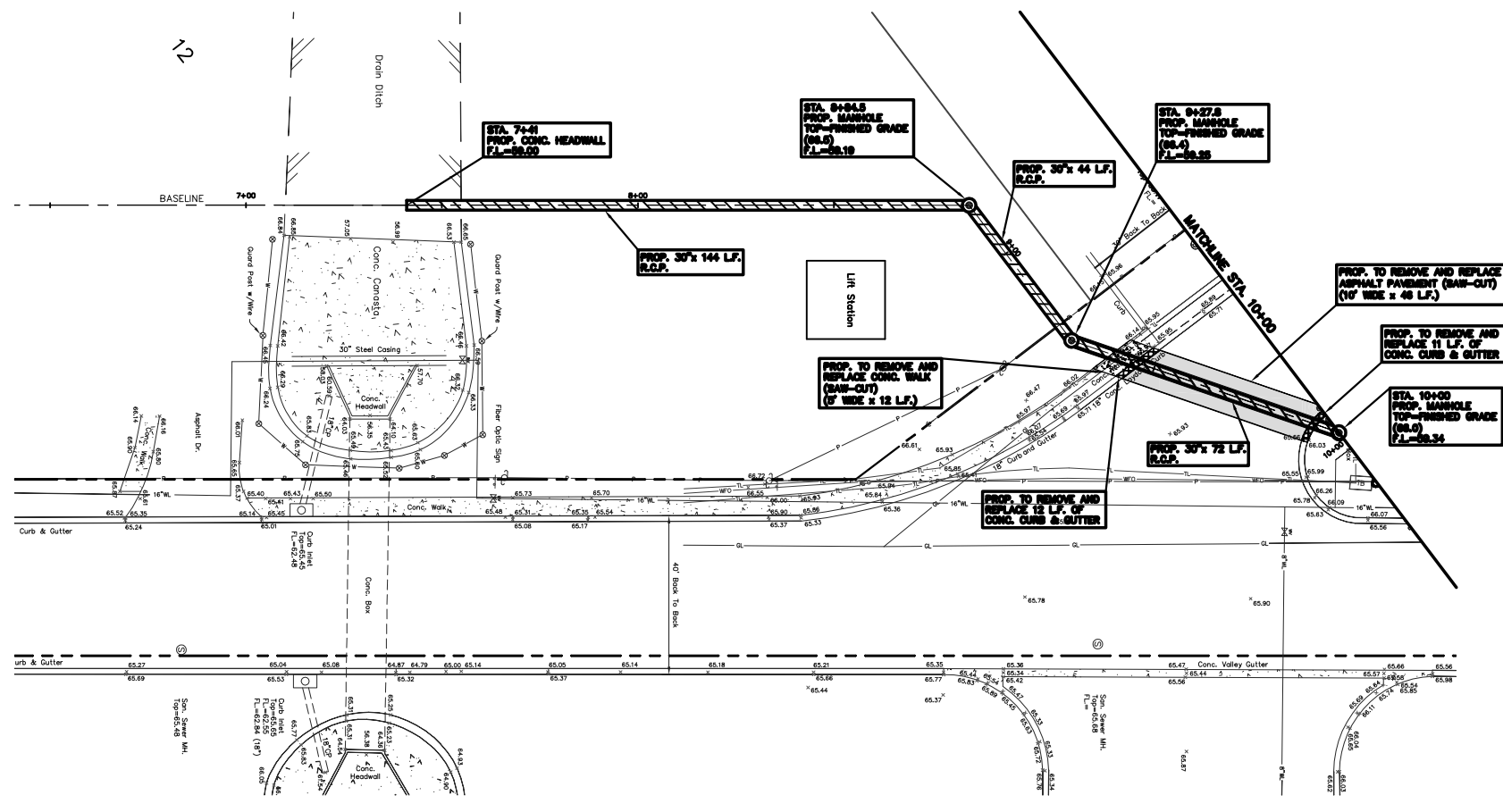
**HIDALGO COUNTY
 PRECINCT No. 1
 CONSTABLE OFFICE
 FENCING**

GM **GUZMAN & MUÑOZ**
 ENGINEERING AND SURVEYING, INC.
 HARLINGEN - MERCEDES - McALLEN
 913 E. Harrison, Suite 1403 2020 E. EXPRESSWAY 83 1100 Jaramila Ave. Suite 107
 Harlingen, Texas 78550 McAllen, Texas 78501
 Phone: (956) 425-1330 Phone: (956) 565-4637
 Fax: (956) 425-1685 Fax: (956) 565-4636

TEXAS REGISTERED
 ENGINEERING FIRM
 F-807

GMES EXPRESSLY RESERVES ITS COMMON LAW COPYRIGHT AND OTHER PROPERTY RIGHTS IN THIS DOCUMENT. THIS DOCUMENT SHALL NOT BE REPRODUCED, COPIED, CHANGED OR DISCLOSED IN ANY FORM OR MANNER WHATSOEVER WITHOUT FIRST OBTAINING THE EXPRESSED WRITTEN CONSENT OF GMES © 2011.

SCALE:
HORIZ.=1"=20'
VERT.=1"=2'



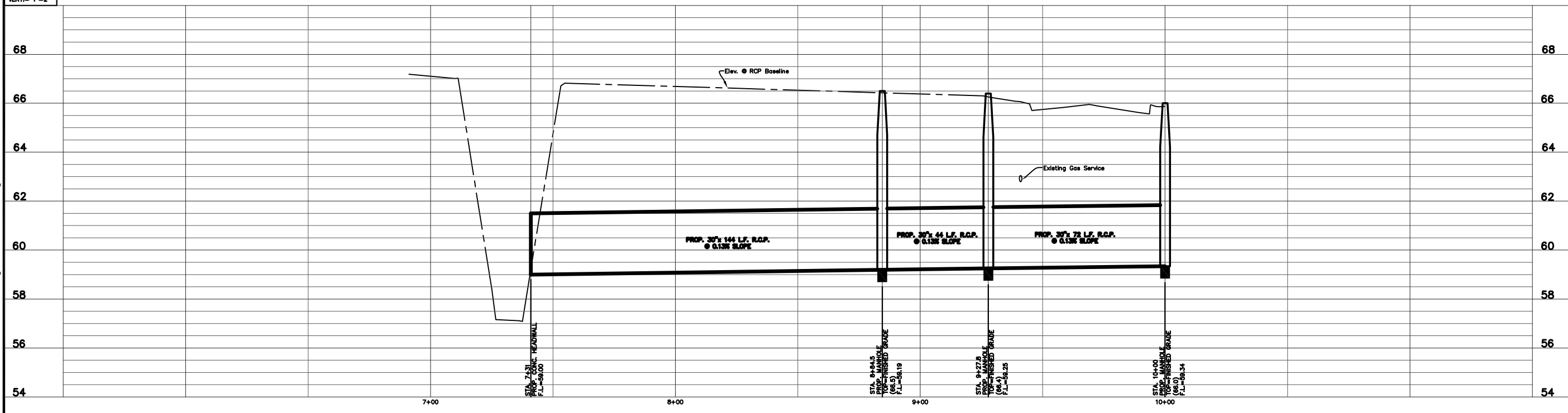
LEGEND			
○	1/2" Iron Pin Found	—	Gas Connection
⊙	Power Pole	■	Gas Meter
—	Guy Wire	⊕	Gas Valve
—	Overhead Powerline	⊕	Water Meter
⊕	Tele. Ped.	⊕	Water Valve
—	Overhead Tel. Line	⊕	Fire Hydrant
—	Street Sign	—	San. Sewer Line
—	Tel. Warning Sign	⊕	San. Sewer Cleanout
⊕	Stop Sign	⊕	Palm Tree
HC	Handicap Sign	RP	Reserve Parking Sign

Checked By: P.C.
Approved By: J.G.R.
Drawn By: J.M.
Date: FEB., 2012

NO.	REVISION	DATE



HIDALGO COUNTY
PRECINCT No. 1
CONSTABLE OFFICE
OFF-SITE
PROPOSED 30" R.C.P.

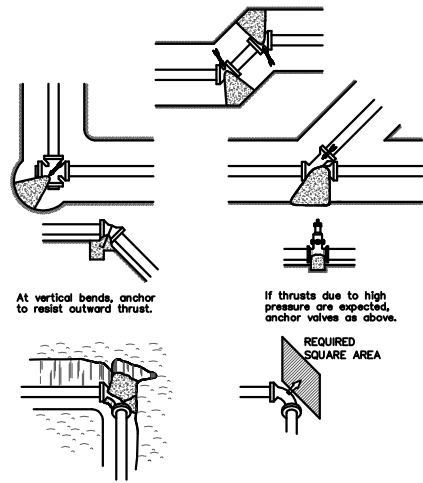


GM
GUZMAN & MUÑOZ
ENGINEERING AND SURVEYING, INC.
HARLINGEN - MERCEDES - McALLEN
913 E. Harrison, Suite 14
Harlingen, Texas 78550
Phone: (956) 425-1330
Fax: (956) 425-1685
2020 E. Expressway 83
Mercedes, Texas 78570
Phone: (956) 565-4637
Fax: (956) 565-4636
1100 Jaramila Ave, Suite 107
McAllen, Texas 78501
Phone: (956) 682-3812
Fax: (956) 682-3813

TEXAS REGISTERED
ENGINEERING FIRM
F-907

Project No. **P740**
Sheet **10** of **14**

GMES EXPRESSLY RESERVES ITS COMMON LAW COPYRIGHT AND OTHER PROPERTY RIGHTS IN THIS DOCUMENT. THIS DOCUMENT SHALL NOT BE REPRODUCED, COPIED, CHANGED OR DISCLOSED IN ANY FORM OR MANNER WHATSOEVER WITHOUT FIRST OBTAINING THE EXPRESSED WRITTEN CONSENT OF GMES © 2011.



CONCRETE THRUST BLOCKS

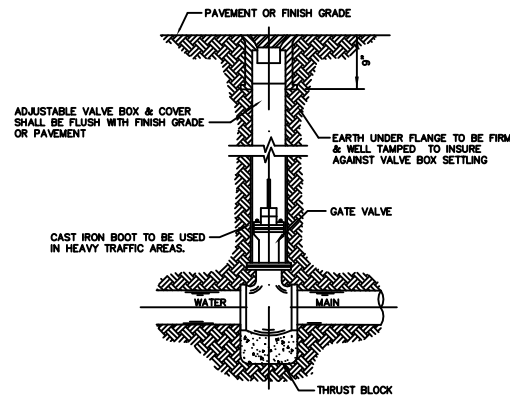
Pipe Size	THRUST-BLOCK DATA			
	Tee Min. Req'd Area S.F.	90° Bend Min. Req'd Area S.F.	45° Bend Min. Req'd Area S.F.	22-1/2° Bend Min. Req'd Area S.F.
6"	3	4	2	1
8"	5	7	4	2
10"	8	12	6	3
12"	12	16	9	5
14"	16	22	12	6
16"	20	29	16	8

Thrust based on 150 psi water pressure. Area based on 2,000 PSF soil bearing.

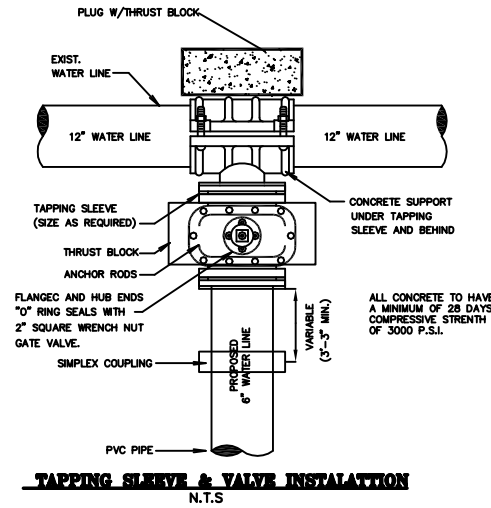
- NOTES:**
1. Thrust block bearing areas shall be poured against undisturbed material. Where trench wall has been disturbed, excavate all loose material and extend to undisturbed material.
 2. Extend thrust block full length of fittings. Joints shall not be covered by thrust blocks. Fittings shall be protected by polyethylene film (8 Mil.) prior to placing concrete thrust block.
 3. Rough blocking forms shall be used along sides of thrust blocks, as required.
 4. Thrust blocks shall be used in combination, as required, to suit the specific fitting arrangement.
 5. Alternate designed restraining systems shall be provided where standard thrust blocking is not suitable and/or soil resistance bearing is less than 1500 pcf.
 6. All wood blocking shall be pressure treated with preservative.

LOCATION OF THRUST BLOCKS

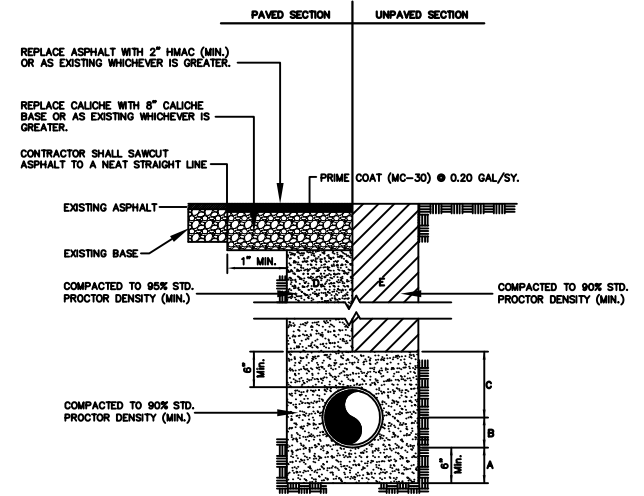
The location of thrust blocks depends on the direction of thrust and type of fitting as shown below.



TYPICAL VALVE AND VALVE BOX INSTALLATION ON MAIN LINE

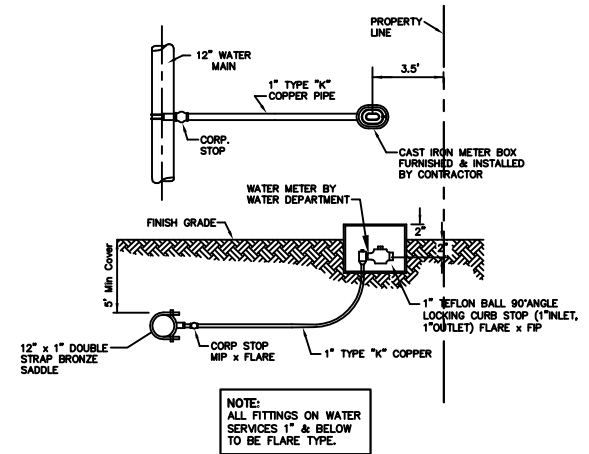


TAPPING SLEEVE & VALVE INSTALLATION
N.T.S.

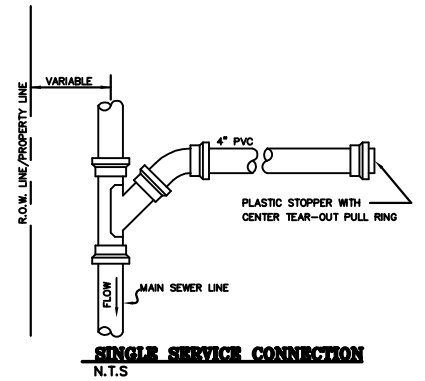


WATERLINE AND SEWER LINE BEDDING DETAIL WITH TYPICAL PAVEMENT REPLACEMENT

- NOT TO SCALE
- A. SAND BEDDING PLACED HAND LEVELED AND COMPACTED BEFORE PIPE IS LAID UP TO FLOW LINE OF PIPE (MIN. THICKNESS = 6")
 - B. SAND BACKFILL PLACED AND COMPACTED AFTER PIPE IS LAID FROM BOTTOM OF PIPE TO SPRING LINE OF PIPE (4" MAX. LIFTS HAND TAMPED)
 - C. SAND BACKFILL PLACED FROM SPRING LINE OF PIPE TO 6" ABOVE TOP OF PIPE (6" LIFTS, HAND TAMPED).
 - D. SAND BACKFILL (6" MAX. LIFTS, MECHANICAL COMPACTION).
 - E. EXCAVATED EARTH BACKFILL (12" LIFTS, MECHANICAL COMPACTION).
- FOUNDATION PREPARATION (WELLPONTS, GRAVEL OR CEMENT STABILIZATION, OR OTHER METHODS APPROVED AS DIRECTED BY THE ENGINEER) SHALL BE REQUIRED WHEN TRENCH BOTTOM IS UNSTABLE.
- BACKFILLING AT STRUCTURES SHALL BE PLACED IN UNIFORM LAYERS IN 6" MAX. LIFTS AND COMPACTED TO 95% STANDARD PROCTOR DENSITY. STRUCTURE BACKFILL MATERIAL SHALL BE SAND.

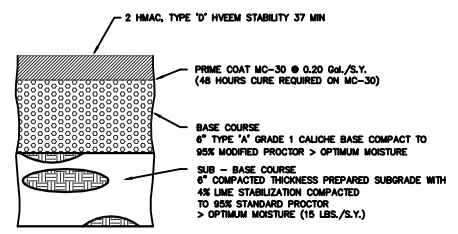


TYPICAL SINGLE WATER SERVICE CONNECTION
(NEAR SIDE)
N.T.S.



SINGLE SERVICE CONNECTION
N.T.S.

NOTE:
A SOUND DETECTION REFLECTOR "STUB-DEC-TA-CAL" BY GRIFFOLYN, INC. OR AN APPROVED SUBSTITUTE, WILL BE FASTENED TO THE END OF EACH SERVICE CONNECTION STUB TO FACILITATE LOCATION SERVICE STUBS.



BASE REPAIR RECONSTRUCTION DETAIL
N.T.S.

Checked By: P.C.
Approved By: J.G.R.
Drawn By: J.M.
Date: FEB., 2012

REVISION	DATE	DESCRIPTION



**HIDALGO COUNTY
PRECINCT 1
WATER AND SEWER DETAILS**

G M GUZMAN & MUÑOZ
ENGINEERING AND SURVEYING, INC.
HARLINGEN - MERCEDES - McALLEN
913 E. Harrison, Suite 148 2020 E. EXPRESSWAY 83 1100 Jamina Ave. Suite 107
Harlingen, Texas 78550 McAllen, Texas 78501
Phone: (956) 425-1330 Phone: (956) 682-3812
Fax: (956) 425-1685 Fax: (956) 682-3813

TEXAS REGISTERED ENGINEERING FIRM F-907

Project No. **P740**
Sheet **13** of **14**

