

Hidalgo County Head Start Program

Policy Council Consent Agenda

DATE: May 16, 2012

SUBJECT: Approval of the Learning Accomplishment Profile Diagnostic (LAP-D) Report - Post Assessment

RATIONALE/NEED: The Learning Accomplishment Profile Diagnostic (LAP-D) is administered three (3) times during the school year. These are the post assessment results.

RECOMMENDATION: Administration recommends approval.

COST: N/A

RELATED INFORMATION INCLUDES: Post LAP-D Report

INITIATED BY: Nora S. Munoz, Assistant Program Director *[Signature]*

REVIEWED BY: Teresa Flores, Executive Director

EXECUTIVE DIRECTOR'S APPROVAL: *Teresa Flores*

Head Start Outcomes Report for Hidalgo County Head Start

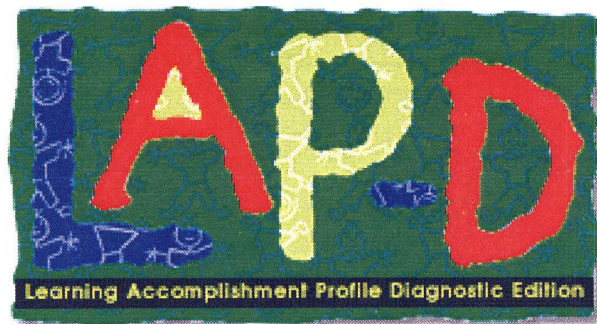
Based on Results From the LAP-D Assessment

Includes assessments for school year 2011 - 2012

Pre.

Mid

Post

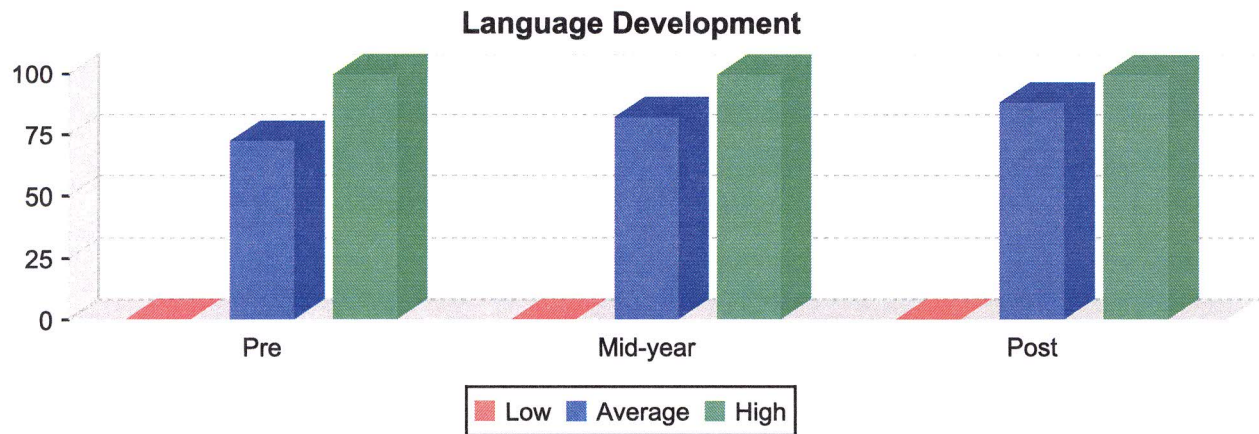


The following table summarizes the progress of children enrolled in Hidalgo County Head Start based on Head Start's Child Outcomes Framework for the selected checkpoints. Each score represents the average number of milestones achieved expressed as a percentage of the total number of milestones correlated to each domain. Gains and/or losses are based on the difference between the average percentage scores at each checkpoint. Information on how the LAP-D is correlated to the Head Start Child Outcomes Framework may be found in the documents section of the application.

Program Name: Hidalgo County Head Start

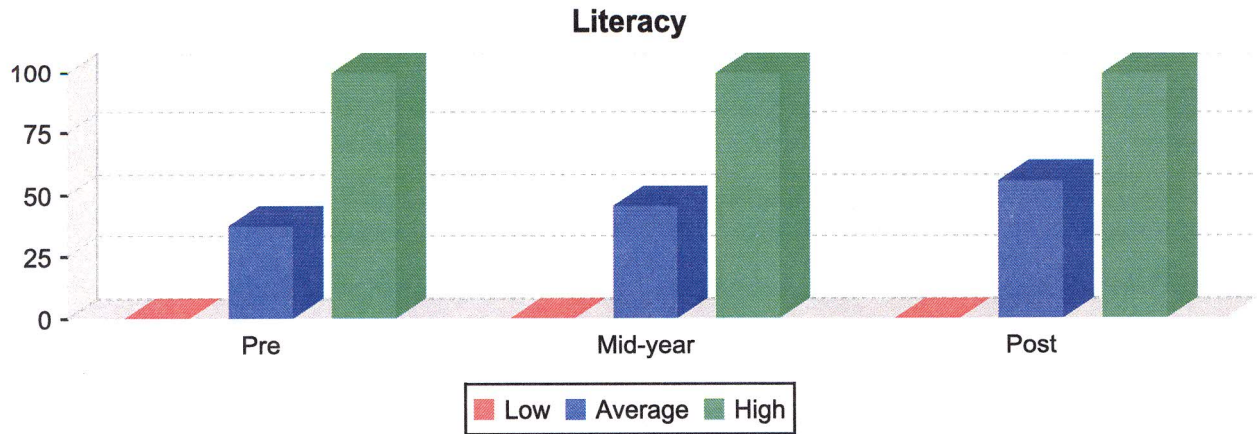
Domain	Checkpoint			Change		
	Pre	Mid-year	Post	Pre/Mid	Mid/Post	Pre/Post
Language Development	72.35	82.22	88.35	9.87	6.12	15.99
Literacy	37.19	45.38	55.79	8.19	10.41	18.60
Mathematics	52.03	67.16	79.19	15.13	12.04	27.16
Science	32.48	50.64	68.34	18.16	17.70	35.86
Creative Arts	0.00	0.00	0.00	0.00	0.00	0.00
Social & Emotional Development	0.00	0.00	0.00	0.00	0.00	0.00
Approaches to Learning	29.72	51.12	72.47	21.40	21.35	42.75
Physical Health & Development	47.62	48.82	54.51	1.20	5.69	6.90

The following graph reflects the range of scores for children enrolled in Hidalgo County Head Start based on the Head Start Child Outcomes Framework. Graphs and the numbers represented by the graphs are based on highest score, lowest score and average score for all children in the program with assessment results during that checkpoint.



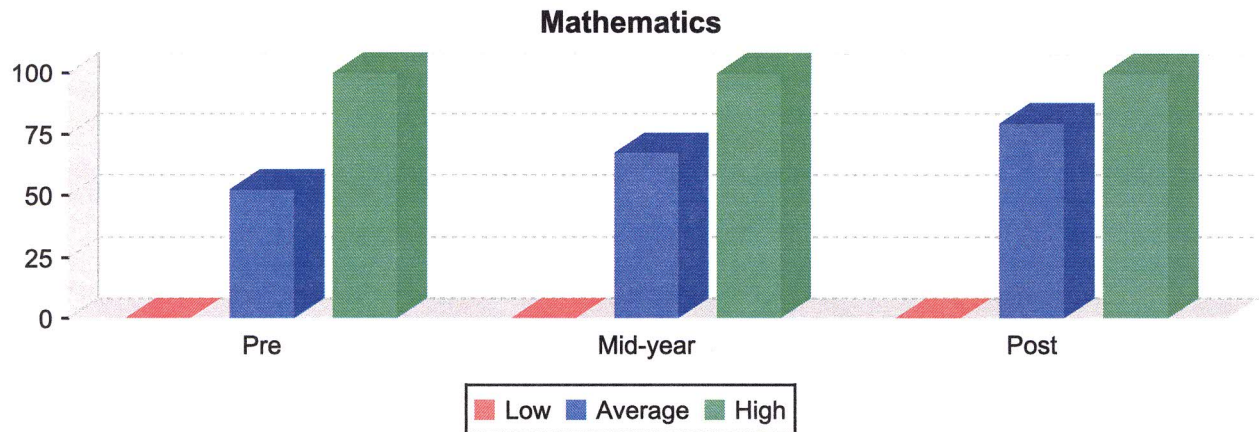
	<u>Pre</u>	<u>Mid-year</u>	<u>Post</u>
High Percentage	100.00	100.00	100.00
Average Percentage	72.35	82.22	88.35
Low Percentage	0.00	0.00	0.00
Average Percentage Gain <Loss>		9.87	6.12
Total Children in Program:	3,857	Total No. Sites: 43	Total No. Classrooms: 198
Children with Assessment data	3,848	3,606	3,634

The following graph reflects the range of scores for children enrolled in Hidalgo County Head Start based on the Head Start Child Outcomes Framework. Graphs and the numbers represented by the graphs are based on highest score, lowest score and average score for all children in the program with assessment results during that checkpoint.



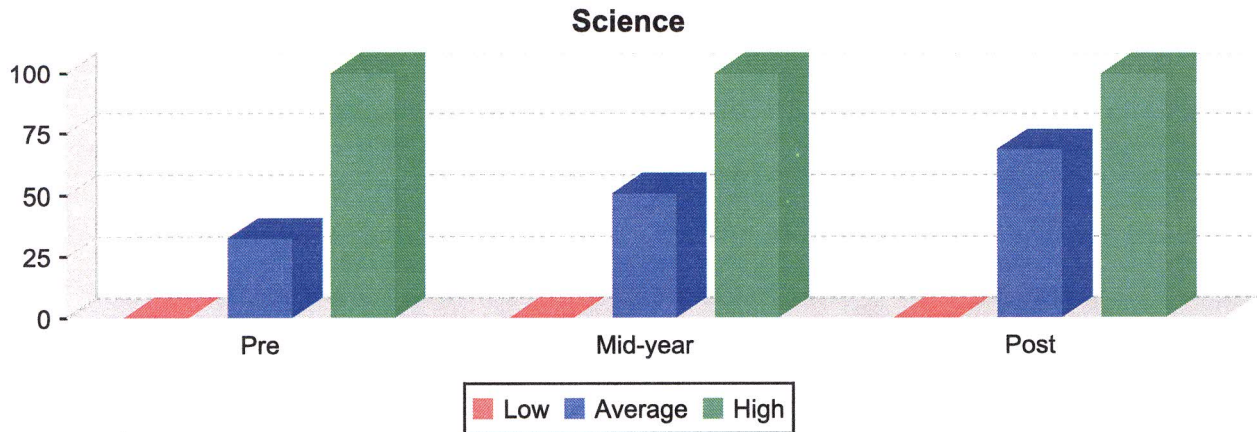
	<u>Pre</u>		<u>Mid-year</u>		<u>Post</u>
High Percentage	100.00		100.00		100.00
Average Percentage	37.19		45.38		55.79
Low Percentage	0.00		0.00		0.00
Average Percentage Gain <Loss>			8.19		10.41
Total Children in Program:	3,857	Total No. Sites:	43	Total No. Classrooms:	198
Children with Assessment data	3,848		3,606		3,634

The following graph reflects the range of scores for children enrolled in Hidalgo County Head Start based on the Head Start Child Outcomes Framework. Graphs and the numbers represented by the graphs are based on highest score, lowest score and average score for all children in the program with assessment results during that checkpoint.



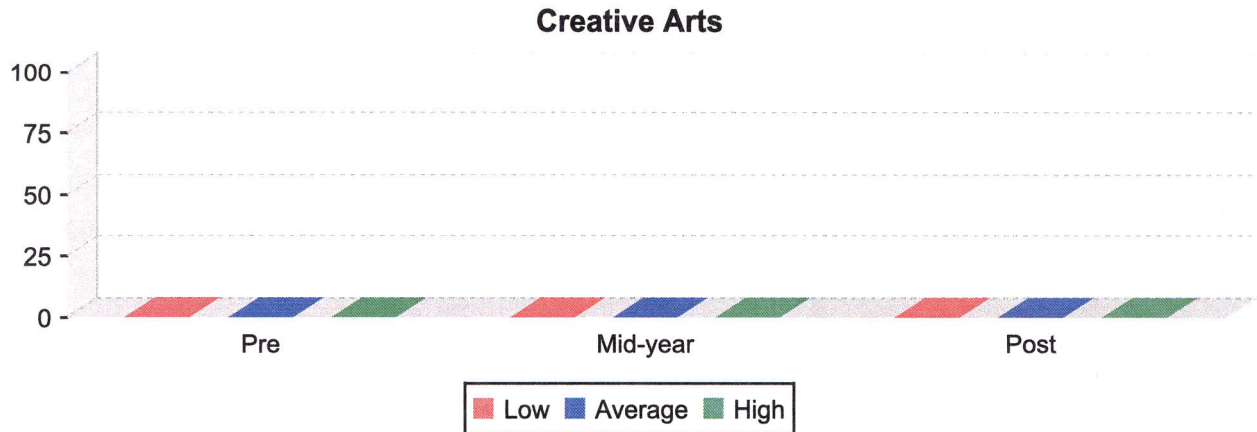
	<u>Pre</u>	<u>Mid-year</u>	<u>Post</u>
High Percentage	100.00	100.00	100.00
Average Percentage	52.03	67.16	79.19
Low Percentage	0.00	0.00	0.00
Average Percentage Gain <Loss>		15.13	12.04
Total Children in Program:	3,857	Total No. Sites: 43	Total No. Classrooms: 198
Children with Assessment data	3,848	3,606	3,634

The following graph reflects the range of scores for children enrolled in Hidalgo County Head Start based on the Head Start Child Outcomes Framework. Graphs and the numbers represented by the graphs are based on highest score, lowest score and average score for all children in the program with assessment results during that checkpoint.



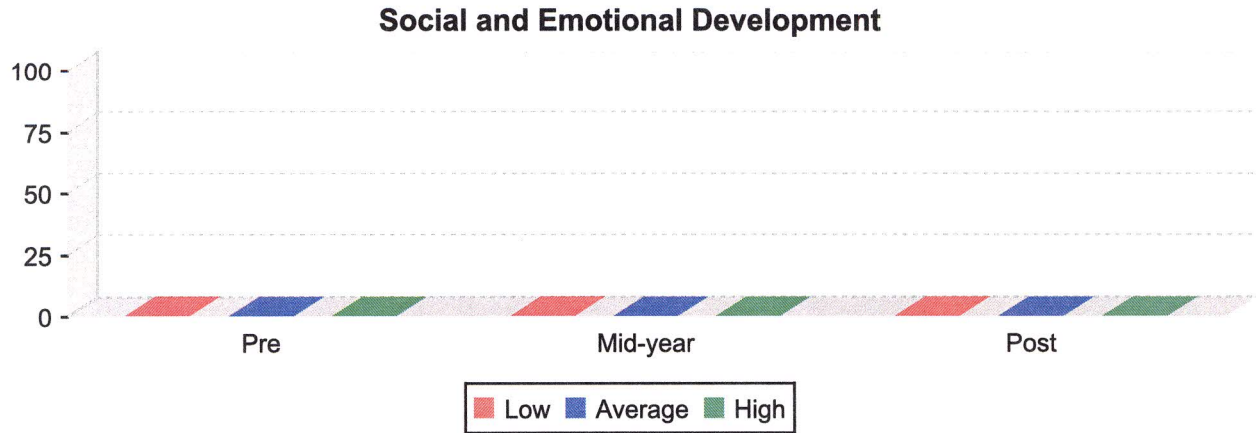
	<u>Pre</u>	<u>Mid-year</u>	<u>Post</u>
High Percentage	100.00	100.00	100.00
Average Percentage	32.48	50.64	68.34
Low Percentage	0.00	0.00	0.00
Average Percentage Gain <Loss>		18.16	17.70
Total Children in Program:	3,857	Total No. Sites: 43	Total No. Classrooms: 198
Children with Assessment data	3,848	3,606	3,634

The following graph reflects the range of scores for children enrolled in Hidalgo County Head Start based on the Head Start Child Outcomes Framework. Graphs and the numbers represented by the graphs are based on highest score, lowest score and average score for all children in the program with assessment results during that checkpoint.



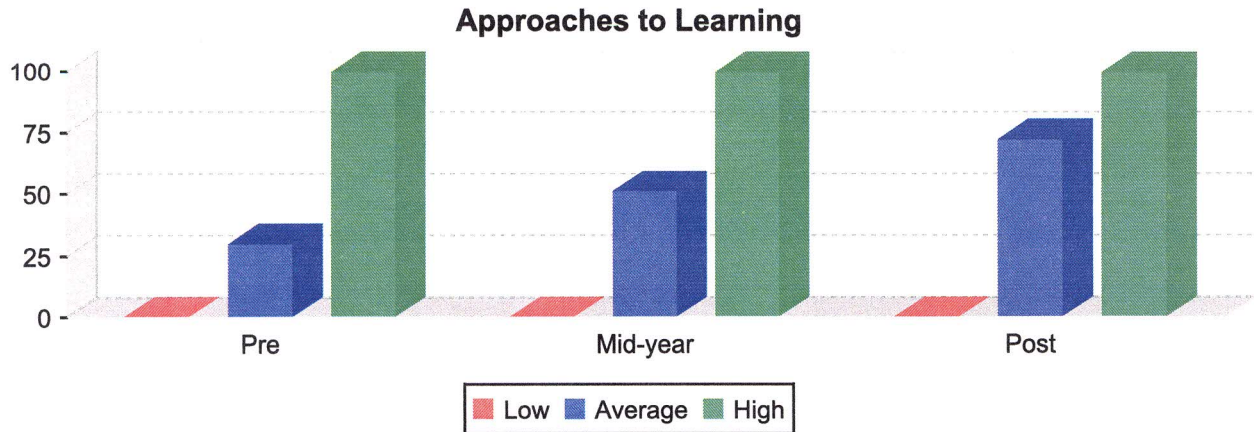
	<u>Pre</u>		<u>Mid-year</u>		<u>Post</u>
High Percentage	0.00		0.00		0.00
Average Percentage	0.00		0.00		0.00
Low Percentage	0.00		0.00		0.00
Average Percentage Gain <Loss>			0.00		0.00
Total Children in Program:	3,857	Total No. Sites:	43	Total No. Classrooms:	198
Children with Assessment data	2,865		3,606		3,634

The following graph reflects the range of scores for children enrolled in Hidalgo County Head Start based on the Head Start Child Outcomes Framework. Graphs and the numbers represented by the graphs are based on highest score, lowest score and average score for all children in the program with assessment results during that checkpoint.



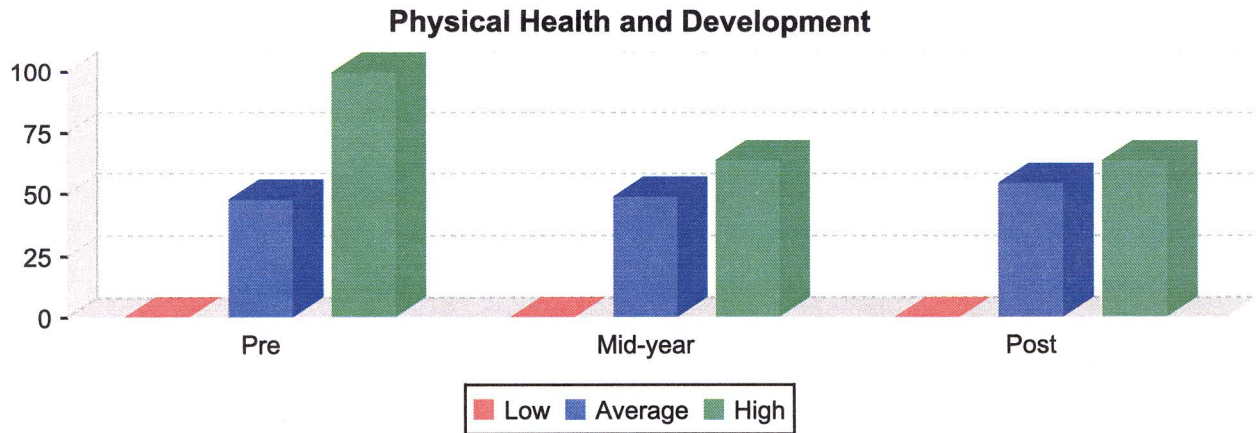
	<u>Pre</u>		<u>Mid-year</u>		<u>Post</u>
High Percentage	0.00		0.00		0.00
Average Percentage	0.00		0.00		0.00
Low Percentage	0.00		0.00		0.00
Average Percentage Gain <Loss>			0.00		0.00
Total Children in Program:	3,857	Total No. Sites:	43	Total No. Classrooms:	198
Children with Assessment data	2,865		3,606		3,634

The following graph reflects the range of scores for children enrolled in Hidalgo County Head Start based on the Head Start Child Outcomes Framework. Graphs and the numbers represented by the graphs are based on highest score, lowest score and average score for all children in the program with assessment results during that checkpoint.



	<u>Pre</u>		<u>Mid-year</u>		<u>Post</u>
High Percentage	100.00		100.00		100.00
Average Percentage	29.72		51.12		72.47
Low Percentage	0.00		0.00		0.00
Average Percentage Gain <Loss>			21.40		21.35
Total Children in Program:	3,857	Total No. Sites:	43	Total No. Classrooms:	198
Children with Assessment data	3,848		3,606		3,634

The following graph reflects the range of scores for children enrolled in Hidalgo County Head Start based on the Head Start Child Outcomes Framework. Graphs and the numbers represented by the graphs are based on highest score, lowest score and average score for all children in the program with assessment results during that checkpoint.



	<u>Pre</u>		<u>Mid-year</u>		<u>Post</u>
High Percentage	100.00		63.86		63.86
Average Percentage	47.62		48.82		54.51
Low Percentage	0.00		0.00		0.00
Average Percentage Gain <Loss>			1.20		5.69
Total Children in Program:	3,857	Total No. Sites:	43	Total No. Classrooms:	198
Children with Assessment data	3,848		3,606		3,634