



Professional Engineers & Land Surveyors

130 E. PARK AVENUE • PHARR, TEXAS 78577

(TEL) 936-782-2557 • (FAX) 936-782-2558

Engineering Firm F - 486 • Surveying Firm #101650-00

Invoice Number 3170

Date 6/26/2012

Due on receipt

Invoice

Hidalgo County Precinct No. 2
Hector "Tito" Palacios
300 W. Hall Acres
Suite G
Pharr, TX 78577

Project: Tower Rd-Part I (Moore to Rancho Blanco)

Project No.: ENG05.015b
Contract No.: C-05-229-06-21(WA#2)
PO No. 561453

Const. Cost _____
% of Const. Cost _____
Billing Fee 307,986.00

<u>Phase</u>	<u>Phase Fee</u>	<u>% Complete</u>	<u>Fee Earned</u>	<u>Prior Billing</u>	<u>Current Fee</u>
Preliminary Phase	119,393.00	100.00%	119,393.00	119,393.00	0.00
Design Phase	71,636.00	100.00%	71,636.00	71,636.00	0.00
Construction Phase	47,757.00	100.00%	47,757.00	38,205.60	9,551.40
Environmental Assessment (Add'l Service)	26,000.00	0.00%			0.00
Right-of-Way Acquisition (Add'l Service)	36,000.00	100.00%	36,000.00	36,000.00	0.00
Geotechnical Investigation	7,200.00	30.36%	2,185.87	2,185.87	0.00

PO # 561453
2-1200-431-00-122-027-0-721
Req # 82579

INVOICE RECEIVED BY: E. Lopez ON 6/26/12
GOODS/SERVICES RECEIVED BY: Hector Tito Palacios ON 6/26/12

Balance Due \$9,551.40

TASK	TOTAL CONTRACT AMOUNT	FEE BREAKDOWN					
		PART 1 WORK Moore Rd - Rancho Blanco Rd			PART 2 WORK Rancho Blanco Rd - Balli Rd		
		Fee Amount	% Comp	Fee Earned	Fee Amount	% Comp	Fee Earned
PRELIMINARY PHASE (50% of Fee)							
FIELD & AERIAL SURVEYING	\$101,586	\$35,818	100%	\$35,818	\$65,768	100%	\$65,768
SCHEMATIC DESIGN	\$237,033	\$83,575	100%	\$83,575	\$153,458	100%	\$153,458
SUB-TOTAL	\$338,619	\$119,393	100%	\$119,393	\$219,226	100%	\$219,226
DESIGN PHASE (30% of Fee)							
SURVEYING - FIELD VERIFICATION	\$50,793	\$17,909	100%	\$17,909	\$32,884	100%	\$32,884
ENGINEERING	\$152,379	\$53,727	100%	\$53,727	\$98,652	60%	\$59,191
SUB-TOTAL	\$203,171	\$71,636	100%	\$71,636	\$131,536	70%	\$92,075
CONSTRUCTION PHASE (20% of Fee)							
CONSTRUCTION ADMINISTRATION	\$135,448	\$47,757	100%	\$47,757	\$87,691	0%	\$0
SUB-TOTAL	\$135,448	\$47,757	100%	\$47,757	\$87,691	0%	\$0
TOTAL BASIC ENGINEERING FEES	\$677,238	\$238,786	100%	\$238,786	\$438,453	71%	\$311,301
ENVIRONMENTAL ASSESSMENT (Add'l Service)							
ENVIRONMENTAL ASSESSMENT	\$40,000	\$16,000	0%	\$0	\$24,000	0%	\$0
PULIC MEETINGS	\$20,000	\$10,000	0%	\$0	\$10,000	0%	\$0
SUB-TOTAL	\$60,000	\$26,000	0%	\$0	\$34,000	0%	\$0
RIGHT-OF-WAY ACQUISITION (Add'l Service)							
R.O.W. MAP	\$60,200	\$36,000	100%	\$36,000	\$24,200	100%	\$24,200
SUB-TOTAL	\$60,200	\$36,000	100%	\$36,000	\$24,200	100%	\$24,200
GEOTECHNICAL INVESTIGATIONI (Add'l Service)							
GEOTECHNICAL INVESTIGATION	\$18,000	\$7,200	30%	\$2,186	\$10,800	0%	\$0
SUB-TOTAL	\$18,000	\$7,200	30%	\$2,186	\$10,800	0%	\$0
TOTAL ADDITIONAL SERVICES	\$138,200	\$69,200	55%	\$38,186	\$69,000	35%	\$24,200
TOTAL ESTIMATED FEE	\$815,438	\$307,986	90%	\$276,972	\$507,453	66%	\$335,601
Part I - Basic Fee Based on 10.5% of Estimated Construction Cost of :					\$2,274,150		
For a Base Engineering Fee of :	\$238,786						
Part II - Basic Fee Based on 10.5% of Estimated Construction Cost of :					\$4,175,739		
For a Base Engineering Fee of :	\$438,453						

R. Gutierrez Engineering Corporation

June 26, 2012

Hector "Tito" Palacios
County Commissioner
Hidalgo County Precinct No. 2
300 W. Hall Acres, Suite G
Pharr, TX 78577

RE: Tower Road – Invoice(s)
ENG05.015b

Dear Commissioner Palacios:

The construction phase for Part I (Moore Road to Rancho Blanco Road) of the project has been completed. We are billing 100% of the construction phase for this part. Enclosed is a copy of the record drawings for your records.

If you have any questions, please call Ramiro or myself so that we may discuss them. You can call us at 956-782-2557 or Ramiro on his mobile at 956-227-2154.

Sincerely,



Jaime Jaimez, Jr.
Accounting Manager

Attachment(s)

cc: File

R. Gutierrez Engineering Corporation

Transmittal Form

TO: Commissioner Palacios
Hidalgo County Precinct No. 2
300 W. Hall Acres, Suite G
Pharr, TX 78577

FROM: Jaime Jaimez, Jr.
SUBJECT: Tower Road
PROJECT NO.: ENG05.015b
DATE: June 26, 2012

WE ARE SENDING YOU ATTACHED UNDER SEPARATE COVER VIA Hand Delivery THE FOLLOWING ITEMS:
 BLUEPRINTS PLANS SHOP DRAWINGS CD
 CHANGE ORDER SAMPLES PAYMENT REQUEST OTHER: INVOICE
 BID TABULATION CONTRACT DOCUMENTS RECORD DRAWINGS 3 1/2" DISKETTE

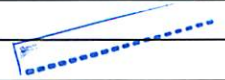
QUANTITY / SETS	DATED	ITEM DESCRIPTION
1	6/26/2012	Cover Letter
1	6/26/2012	Invoice No. 3170 - Part 1
1	-	Engineer's fee worksheet
1	-	Record Drawings

THESE ARE TRANSMITTED AS CHECKED BELOW:

FOR BIDS DUE APPROVED AS NOTED FOR YOUR RECORDS
 FOR APPROVAL APPROVED AS SUBMITTED FOR YOUR ACKNOWLEDGEMENT
 FOR YOUR USE RETURN FOR CORRECTIONS RESUBMIT FOR APPORVAL
 AS REQUESTED FOR FURTHER PROCESSING ON LOAN
 FOR REVIEW AND COMMENT FOR SIGNATURE OTHER

COMMENTS: _____

RECEIVED
JUN 26 2012



Copy Distribution: file

Received by: *Elizabeth H. Marks*

HIDALGO COUNTY - PRECINCT NO. 2

SOUTH TOWER ROAD - RECORD DRAWING

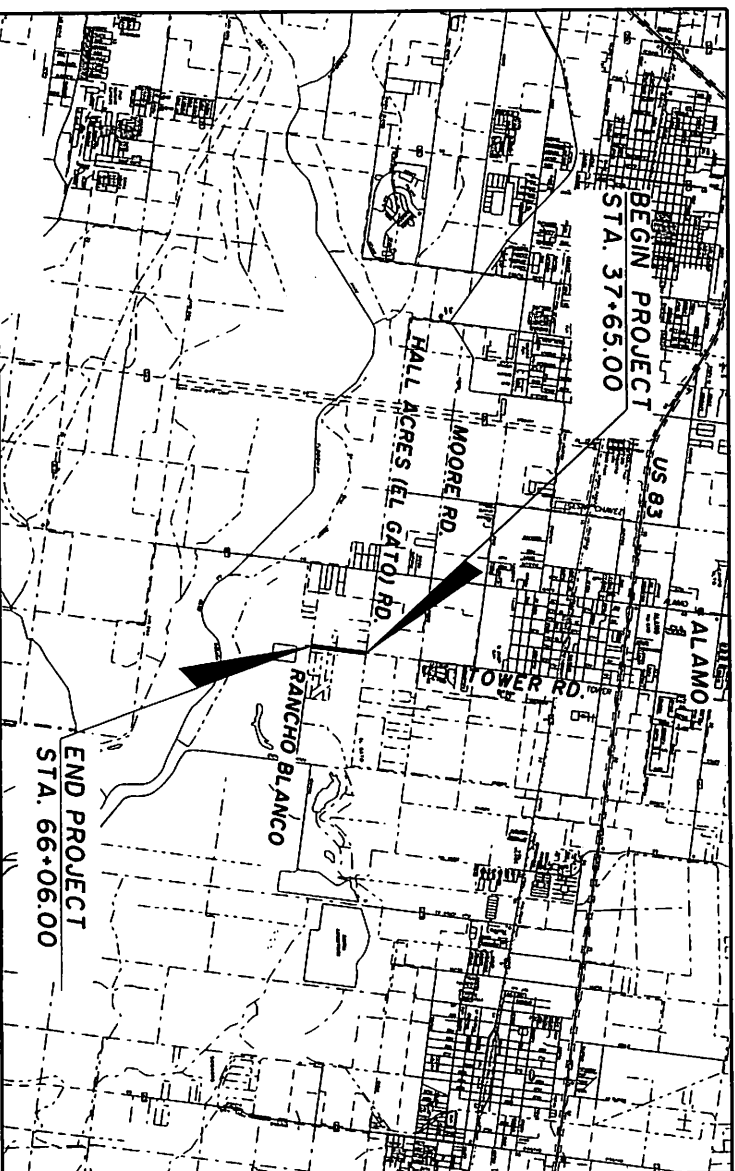
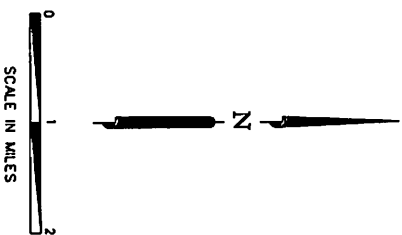
STREET & DRAINAGE IMPROVEMENTS PROJECT

PROJECT No. 5008/09/10/11-92-0311-5000-9200-UCP-ML & 1-1339-431-00-122-031-0-731

NET LENGTH OF PROJECT - 2841.00 FT - 0.54 MILES

LIMITS FROM: HALL ACRES (EL GATO) RD.
TO: RANCHO BLANCO ROAD

RECONSTRUCTION OF AN URBAN OFF-SYSTEM, NON-FREEWAY ROAD;
CONSISTING OF GRADING, CURB & GUTTER, LIME TREATED SUBGRADE, FLEXIBLE BASE,
ASPHALTIC CONCRETE PAVING, STORM SEWER STRUCTURES, WHEEL CHAIR RAMPS,
SIGNING AND PAVEMENT MARKINGS.



DESIGN SPEED:
SPEED = 45 MPH

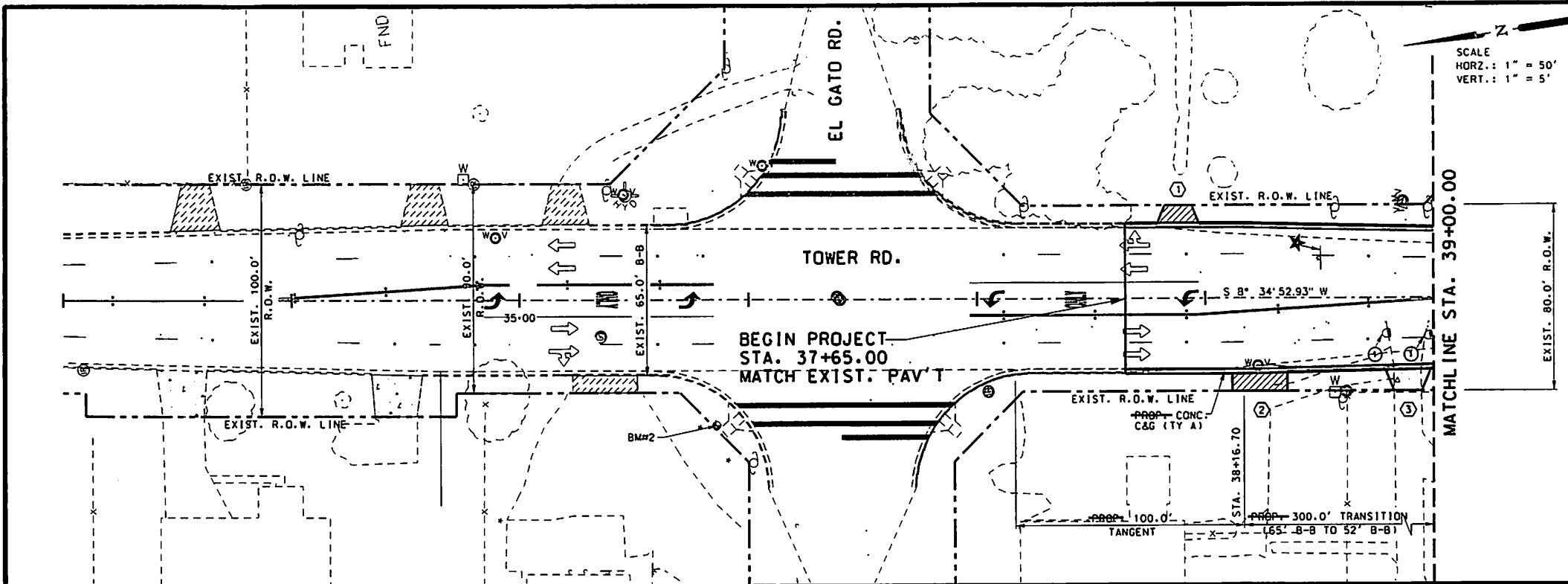
HIDALGO COUNTY OFFICIALS

COUNTY JUDGE RAMON GARCIA
 COMMISSIONER PRECINCT NO. 1 JOEL QUINTANILLA
 COMMISSIONER PRECINCT NO. 2 HECTOR "TITO" PALACIOS
 COMMISSIONER PRECINCT NO. 3 JOE FLORES



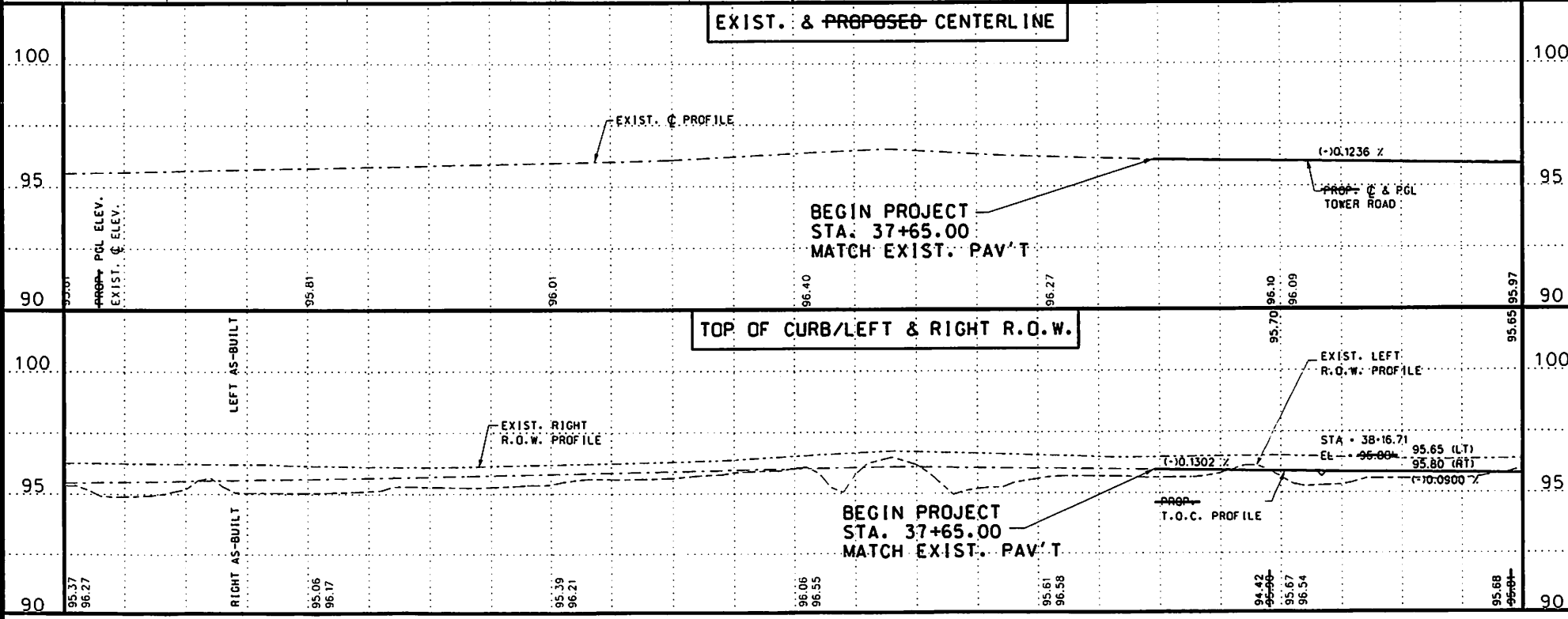
R. Gutierrez
Engineering Corporation
 Professional Engineers & Land Surveyors

130 E. PARK AVENUE • PHARR, TEXAS 78677
 (TEL) 956 782-2557 • (FAX) 956 782-2558
 ENG. FIRM No. 486



- LEGEND**
- CONCRETE DRIVEWAY
 - ASPHALT DRIVEWAY
 - TRAFFIC DIRECTION
 - MAIL BOX
 - NUMBER OF MAILBOXES
 - DRIVEWAY ID NUMBER (SEE DRIVEWAY TABLE)
 - EXIST. 18" PIPE
 - EXIST. FENCE
 - EXIST. POWER LINE
 - EXIST. SAN. SEWER LINE
 - GATED INLET
 - WATER METER
 - GAS METER
 - SANITARY SEWER MANHOLE
 - CLEAN OUT
 - SIGN
 - FIRE HYDRANT
 - DOWN GUY
 - VALVE MARKER
 - PALM TREE
 - TREE-2
 - TREE-3
 - BENCH MARK
 - IRON ROD
 - POWER POLE
 - STORM PIPE
 - TURNOUT ID (SEE DRIVEWAY TABLE)
 - EXIST. SIGNS (TO BE RELOCATED)

SCALE
 HORZ.: 1" = 50'
 VERT.: 1" = 5'



THE SEAL APPEARING ON THIS DOCUMENT WAS AUTHORIZED BY RAMIRO GUTIERREZ, P.E. 65948
 DATE: 6-21-12
 ALTERATION OF A SCALED DOCUMENT WITHOUT PROPER NOTIFICATION TO THE RESPONSIBLE ENGINEER IS AN OFFENSE UNDER THE TEXAS ENGINEERING PRACTICE LAW.

SHEET 1 OF 6

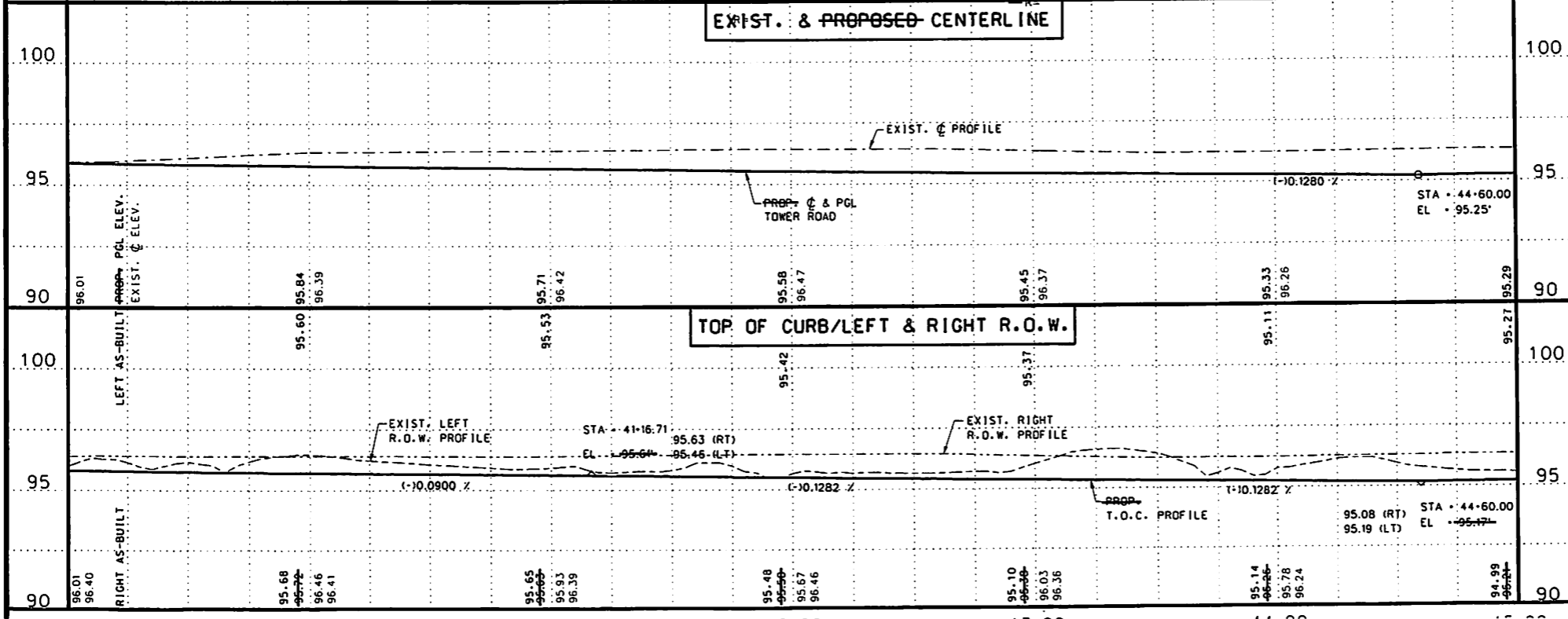
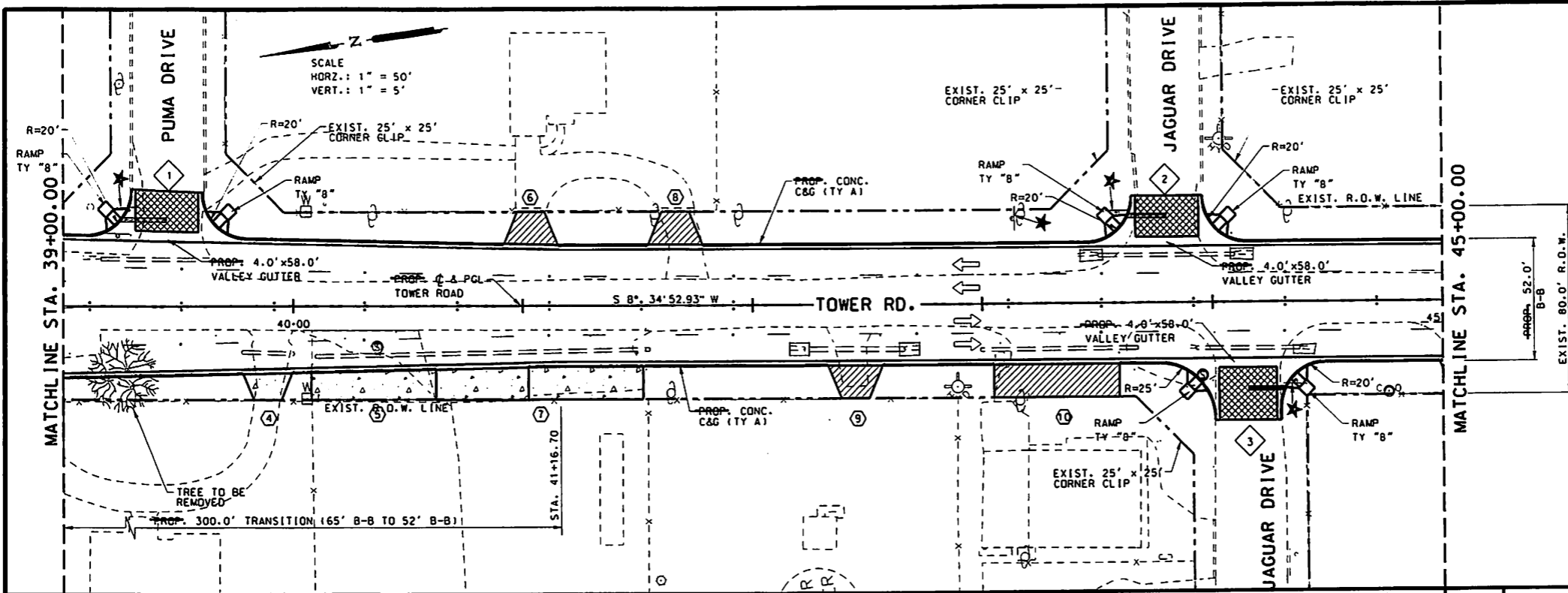
HIDALGO COUNTY PRECINCT No.2
 TOWER ROAD
 PLAN & PROFILE
 RECORD DRAWING

REVISIONS	DATE	BY

R. Gutierrez Professional Engineers & Land Surveyors
Engineering Corporation
 130 E. PARK AVENUE • PEARL, TEXAS 78571
 (TEL) 956 782-2557 • (FAX) 956 782-2558
 PRM No. 426

PROJECT NUMBER	COUNTY	HIGHWAY NO.

DRAWN BY: CHECKED BY: SHEET No.



P.E.

THE SEAL APPEARING ON THIS DOCUMENT WAS AUTHORIZED BY RAMIRO GUTIERREZ, P.E. 65948
 DATE: 6-21-12
 ALTERATION OF A SEALED DOCUMENT WITHOUT PROPER NOTIFICATION TO THE RESPONSIBLE ENGINEER IS AN OFFENSE UNDER THE TEXAS ENGINEERING PRACTICE LAW

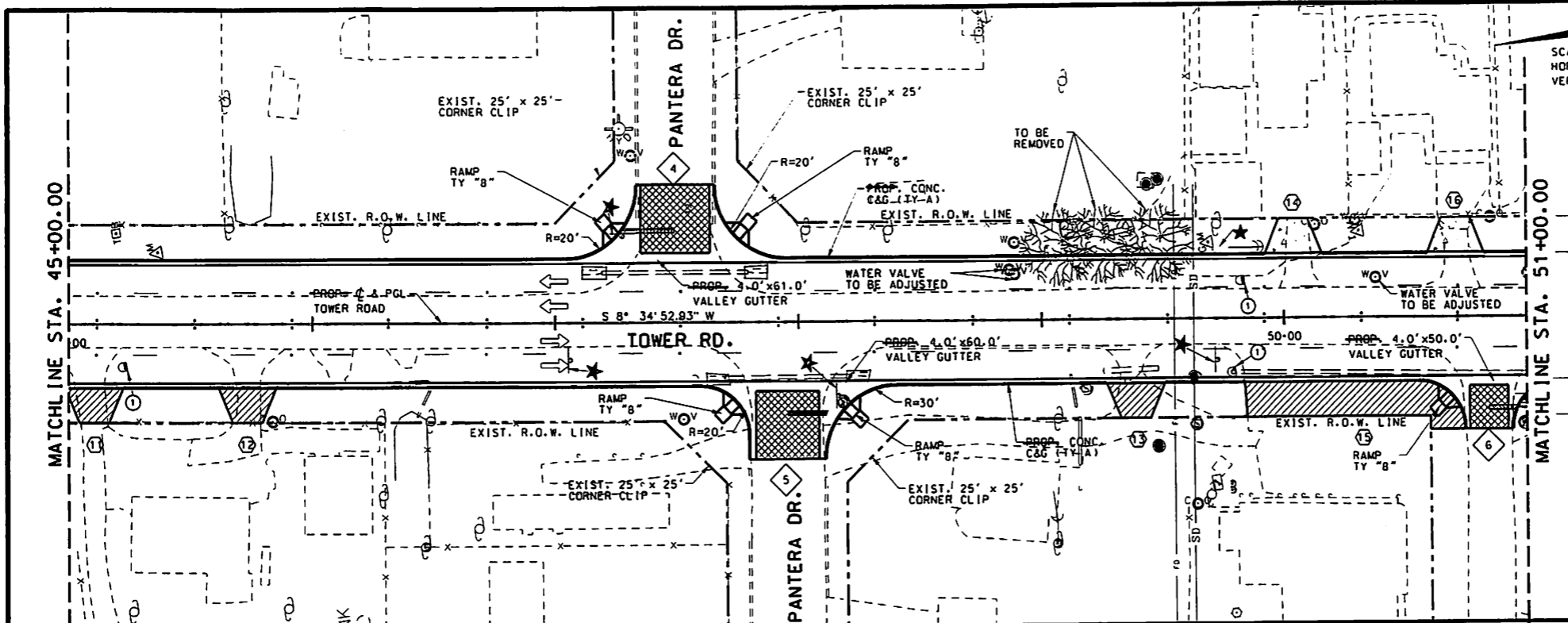
SHEET 2 OF 6

**HIDALGO COUNTY PRECINCT No.2
 TOWER ROAD
 PLAN & PROFILE
 RECORD DRAWING**

REVISIONS	DATE	BY

R. Gutierrez Engineering Corporation Professional Engineers & Land Surveyors
 100 E. PARK AVENUE • PHARR, TEXAS 78577
 (TEL) 936 782-2557 • (FAX) 936 782-2568
 FRM No. 486

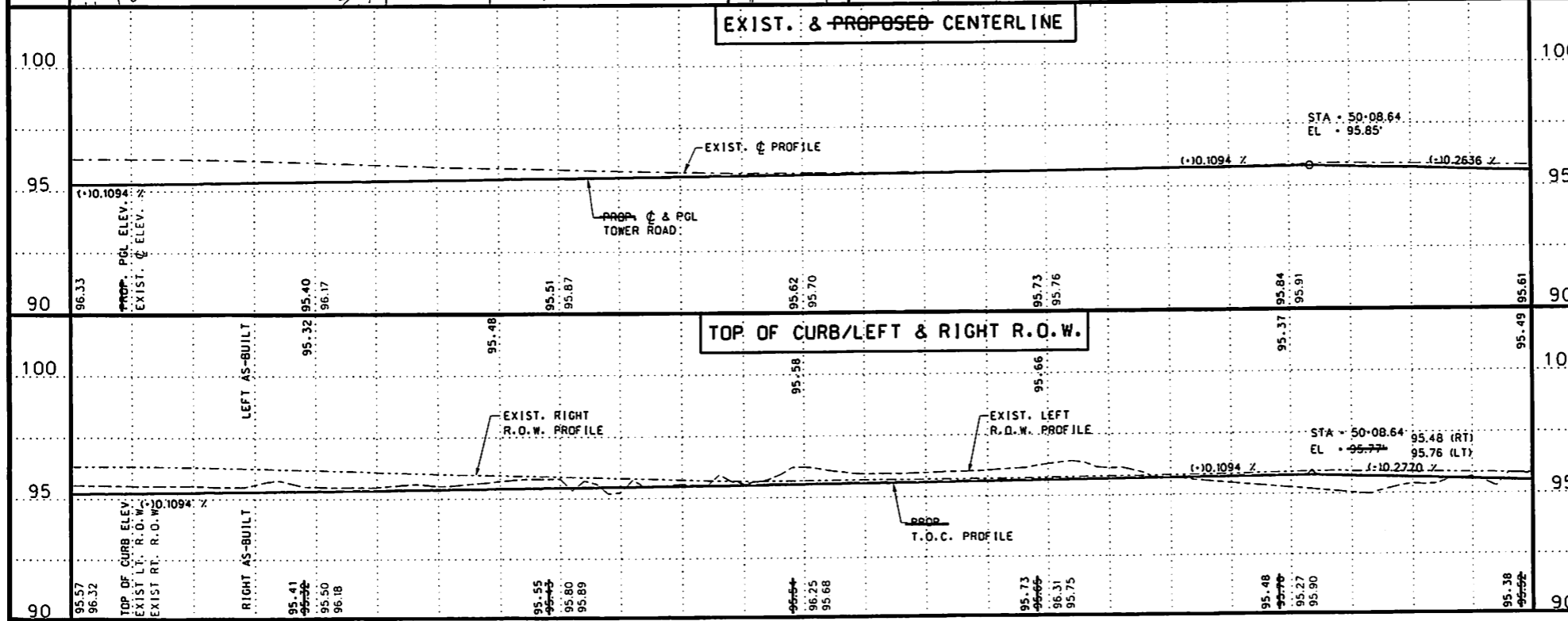
PROJECT NUMBER	COUNTY	HIGHWAY NO.
		TOWER ROAD
DRAWN BY:	CHECKED BY:	SHEET No.



SCALE
HORZ.: 1" = 50'
VERT.: 1" = 5'

LEGEND

- CONCRETE DRIVEWAY
- ASPHALT DRIVEWAY
- TRAFFIC DIRECTION
- MAIL BOX
- NUMBER OF MAILBOXES
- DRIVEWAY ID. NUMBER (SEE DRIVEWAY TABLE)
- EXIST. 18" PIPE
- EXIST. FENCE
- EXIST. POWER LINE
- EXIST. SAN. SEWER LINE
- GRATED INLET
- WATER METER
- GAS METER
- SANITARY SEWER MANHOLE
- CLEAN OUT
- SIGN
- FIRE HYDRANT
- DOWN GUY
- VALVE MARKER
- PALM TREE
- TREE-2
- TREE-3
- BENCH MARK
- IRON ROD
- POWER POLE
- STORM PIPE
- TURNOUT ID. (SEE DRIVEWAY TABLE)
- EXIST. SIGNS (TO BE RELOCATED)



THE SEAL APPEARING ON THIS DOCUMENT WAS AUTHORIZED BY RAMIRO GUTIERREZ, P.E. 65948
DATE: 6-21-12
ALTERATION OF A SEALED DOCUMENT WITHOUT PROPER NOTIFICATION TO THE RESPONSIBLE ENGINEER IS AN OFFENSE UNDER THE TEXAS ENGINEERING PRACTICE LAW

SHEET 3 OF 6

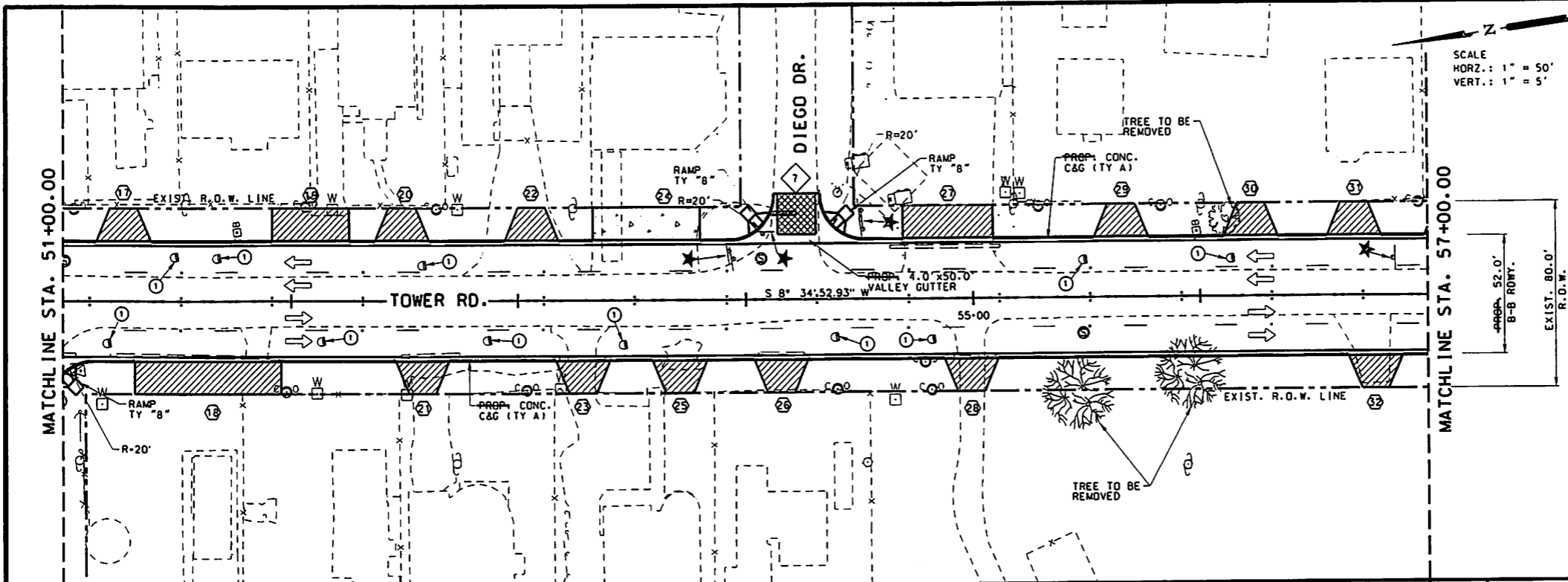
HIDALGO COUNTY PRECINCT No.2
TOWER ROAD
PLAN & PROFILE
RECORD DRAWING

REVISIONS	DATE	BY

R. Gutierrez Professional Engineers & Land Surveyors
Engineering Corporation
130 E PARK AVENUE • PHARR, TEXAS 78571
(TEL) 956 782-2557 • (FAX) 956 782-2558
PRM No. 486

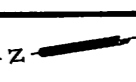
PROJECT NUMBER	COUNTY	HIGHWAY NO.
		TOWER ROAD

DRAWN BY: CHECKED BY: SHEET No.



- LEGEND**
- CONCRETE DRIVEWAY
 - ASPHALT DRIVEWAY
 - TRAFFIC DIRECTION
 - MAIL BOX
 - NUMBER OF MAILBOXES
 - DRIVEWAY ID NUMBER (SEE DRIVEWAY TABLE)
 - EXIST. 18' PIPE
 - EXIST. FENCE
 - EXIST. POWER LINE
 - EXIST. SAN. SEWER LINE
 - GRATED INLET
 - WATER METER
 - GAS METER
 - SANITARY SEWER MANHOLE
 - CLEAN OUT
 - SIGN
 - FIRE HYDRANT
 - DOWN GUY
 - VALVE MARKER
 - PALM TREE
 - TREE-2
 - TREE-3
 - BENCH MARK
 - IRON ROD
 - POWER POLE
 - STORM PIPE
 - TURNOUT ID (SEE DRIVEWAY TABLE)
 - EXIST. SIGNS (TO BE RELOCATED)

SCALE
 HORZ.: 1" = 50'
 VERT.: 1" = 5'



EXIST. R.O.W. 52.0'
 B-B ROWTY.
 EXIST. R.O.W. 80.0'



THE SEAL APPEARING ON THIS DOCUMENT WAS AUTHORIZED BY RAMIRO GUTIERREZ, P.E. 6594
 DATE: 6-21-12
 ALTERATION OF A SEALED DOCUMENT WITHOUT PROPER NOTIFICATION TO THE RESPONSIBLE ENGINEER IS AN OFFENSE UNDER THE TEXAS ENGINEERING PRACTICE LAW.

SHEET 4 OF 6

HIDALGO COUNTY PRECINCT No.2
 TOWER ROAD
 PLAN & PROFILE
 RECORD DRAWING

REVISIONS	DATE	BY

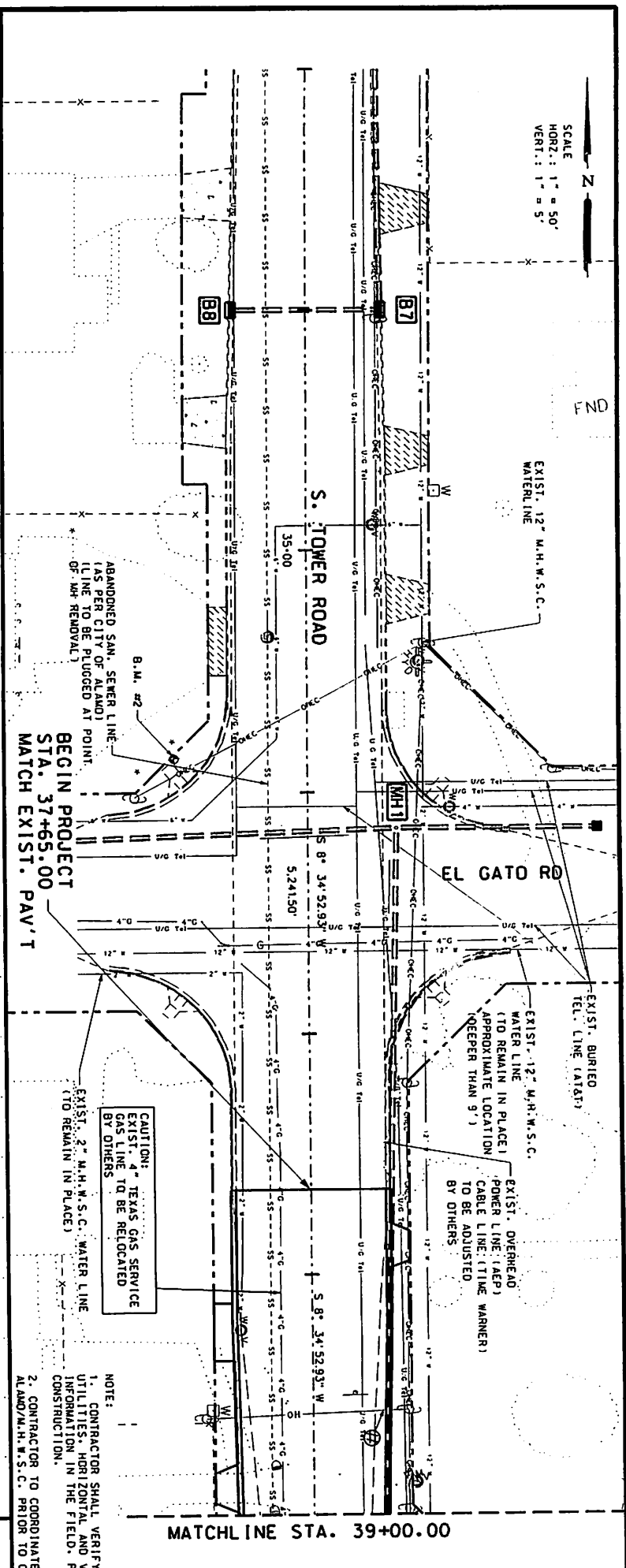
R. Gutierrez Engineering Corporation
 Professional Engineers & Land Surveyors
 130 E. PARK AVENUE • PHARR, TEXAS 78577
 (TEL) 936 782-2557 • (FAX) 936 782-2558
 FIRM No. 486

PROJECT NUMBER	COUNTY	HIGHWAY NO.

DRAWN BY	CHECKED BY	SHEET No.

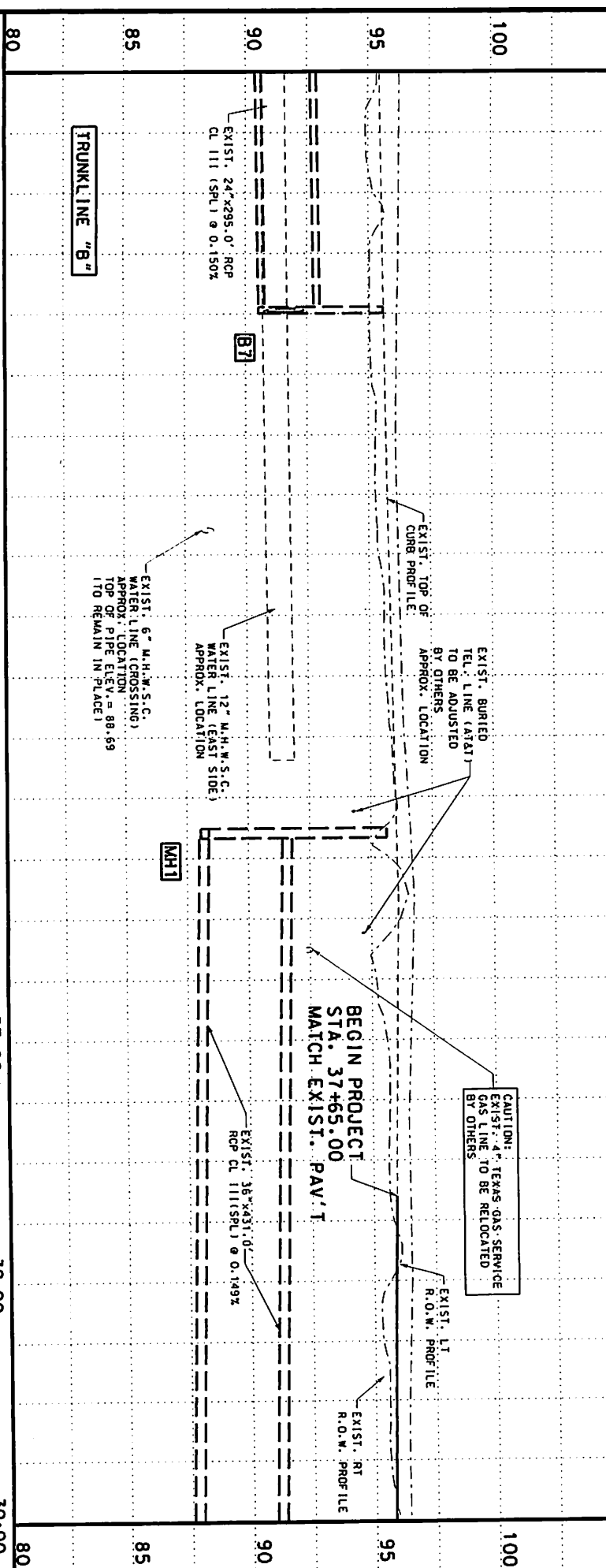
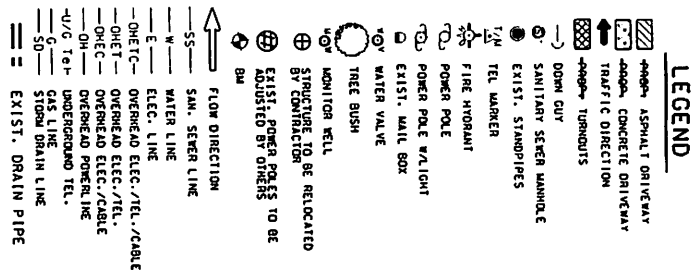
SCALE
 HORIZ.: 1" = 50'
 VERT.: 1" = 5'

N



MATCHLINE STA. 39+00.00

NOTE:
 1. CONTRACTOR SHALL VERIFY ALL UTILITIES, HORIZONTAL AND VERTICAL INFORMATION IN THE FIELD, PRIOR TO CONSTRUCTION.
 2. CONTRACTOR TO COORDINATE WITH CITY OF ALAMO/M.H.W.S.C. PRIOR TO CONSTRUCTION.



SHEET 1 OF 6
 HIDALGO COUNTY PRECINCT NO.2
 TOWER ROAD
 UTILITY AND DRAINAGE
 RECORD DRAWING

THE SEAL APPEARING ON THIS DOCUMENT WAS AUTHORIZED BY BOARD ORDER #7, FEBRUARY 2, 1990

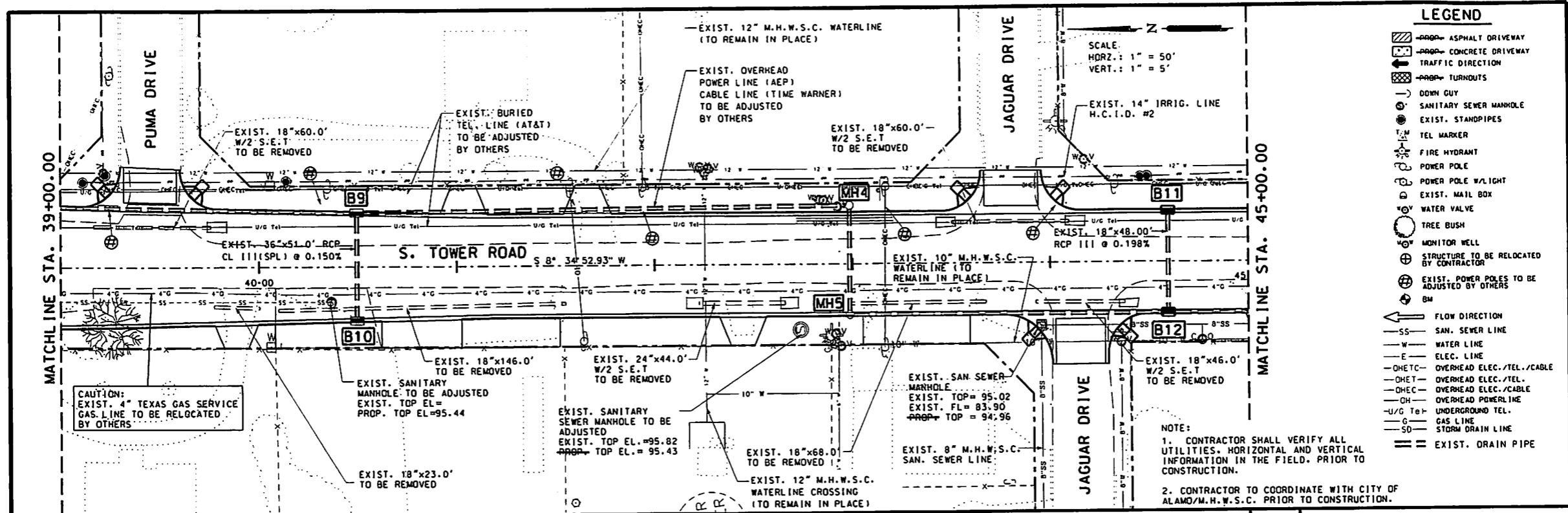
DATE: 6-21-12

ALTERATION OF A SEAL OR INDICATION TO THE PUBLIC ORDER IS PROHIBITED UNDER PENALTY OF LAW. THIS IS AN ENGINEERING PRACTICE LAW.

R. Gutierrez Professional Engineers & Land Surveyors
Engineering Corporation
 100 E PARK AVENUE • PEARL TEXAS 78077
 (936) 589-72-5571 • (936) 589-72-5533
 P.E. No. 495

PROJECT NUMBER	COUNTY	HIGHWAY NO.
TOWER ROAD		
SHEET NO.		

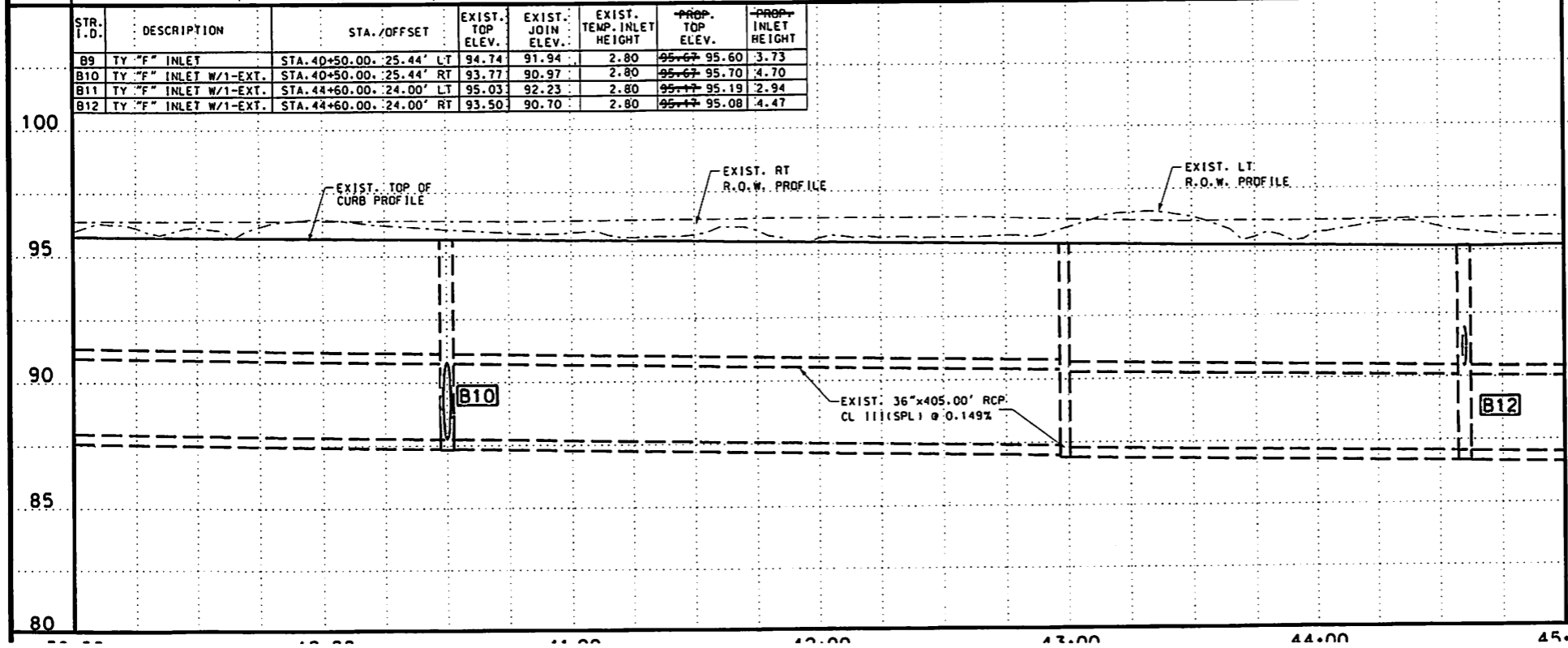
DESIGNED BY: _____ CHECKED BY: _____



LEGEND

- ASPHALT DRIVEWAY
- CONCRETE DRIVEWAY
- TRAFFIC DIRECTION
- TURNOUTS
- DOWN GUY
- SANITARY SEWER MANHOLE
- EXIST. STANDPIPES
- TEL MARKER
- FIRE HYDRANT
- POWER POLE
- POWER POLE W/LIGHT
- EXIST. MAIL BOX
- WATER VALVE
- TREE BUSH
- MONITOR WELL
- STRUCTURE TO BE RELOCATED BY CONTRACTOR
- EXIST. POWER POLES TO BE ADJUSTED BY OTHERS
- BM
- FLOW DIRECTION
- SAN. SEWER LINE
- WATER LINE
- ELEC. LINE
- OVERHEAD ELEC./TEL./CABLE
- OVERHEAD ELEC./TEL.
- OVERHEAD ELEC./CABLE
- OVERHEAD POWERLINE
- UNDERGROUND TEL.
- GAS LINE
- STORM DRAIN LINE
- EXIST. DRAIN PIPE

NOTE:
 1. CONTRACTOR SHALL VERIFY ALL UTILITIES, HORIZONTAL AND VERTICAL INFORMATION IN THE FIELD, PRIOR TO CONSTRUCTION.
 2. CONTRACTOR TO COORDINATE WITH CITY OF ALAMO/M.H.W.S.C. PRIOR TO CONSTRUCTION.



STR. I.D.	DESCRIPTION	STA./OFFSET	EXIST. TOP ELEV.	EXIST. JOIN ELEV.	EXIST. TEMP. INLET HEIGHT	PROP. TOP ELEV.	PROP. INLET HEIGHT
B9	TY "F" INLET	STA. 40+50.00, 25.44' LT	94.74	91.94	2.80	95.67	95.60
B10	TY "F" INLET W/1-EXT.	STA. 40+50.00, 25.44' RT	93.77	90.97	2.80	95.67	95.70
B11	TY "F" INLET W/1-EXT.	STA. 44+60.00, 24.00' LT	95.03	92.23	2.80	95.17	95.19
B12	TY "F" INLET W/1-EXT.	STA. 44+60.00, 24.00' RT	93.50	90.70	2.80	95.17	95.08



THE SEAL APPEARING ON THIS DOCUMENT WAS AUTHORIZED BY RAMIRO GUTIERREZ, P.E. 65948
 DATE: 6-21-12
 ALTERATION OF A SEALED DOCUMENT WITHOUT PROPER NOTIFICATION TO THE RESPONSIBLE ENGINEER IS AN OFFENSE UNDER THE TEXAS ENGINEERING PRACTICE LAW

SHEET 2 OF 6
 HIDALGO COUNTY PRECINCT No.2
 TOWER ROAD
 UTILITY AND DRAINAGE
 RECORD DRAWING

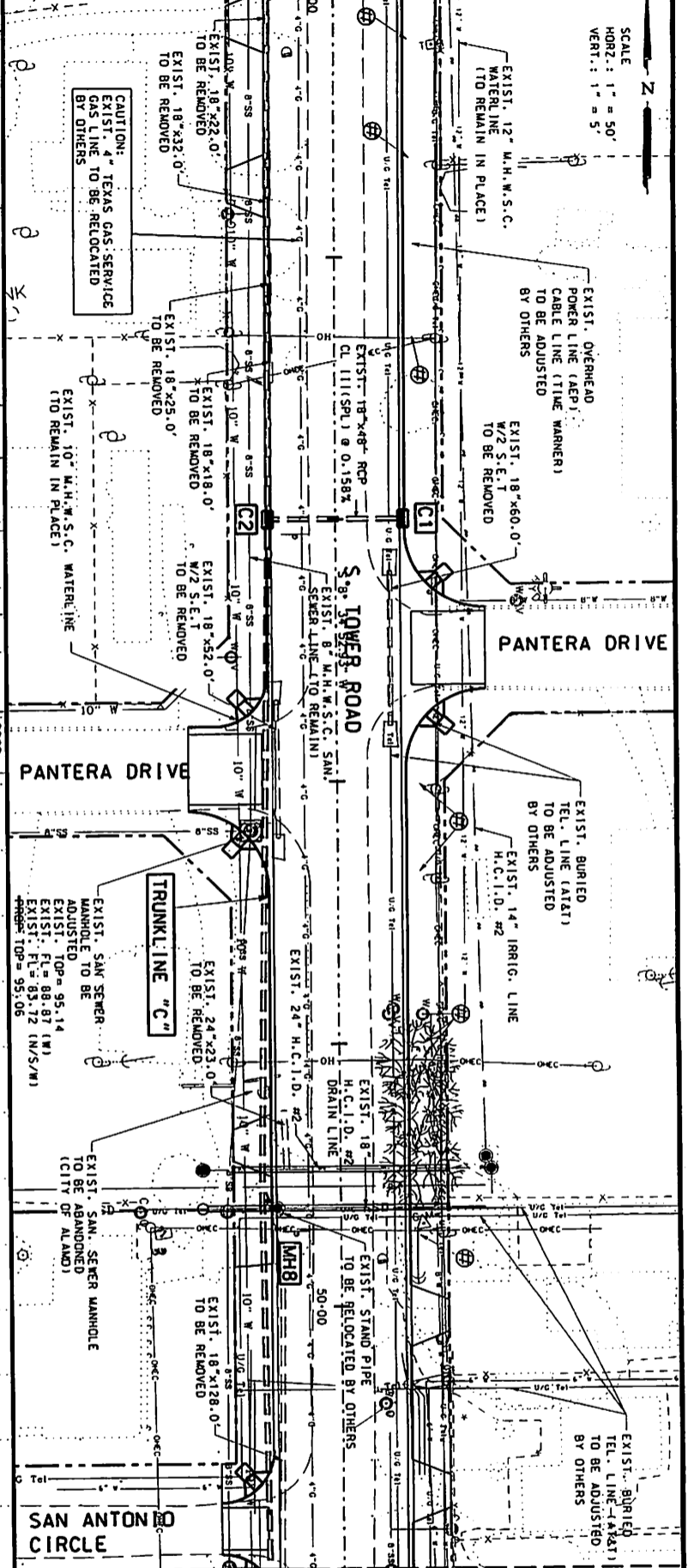
REVISIONS	DATE	BY

R. Gutierrez Engineering Corporation
 Professional Engineers & Land Surveyors
 130 E. PARK AVENUE • PHARR, TEXAS 78577
 (TEL) 956 782-2557 • (FAX) 956 782-2558
 PRM No. 426

PROJECT NUMBER	COUNTY	HIGHWAY NO.
		TOWER ROAD
DRAWN BY:	CHECKED BY:	SHEET No.

SCALE
HORIZ: 1" = 50'
VERT: 1" = 5'

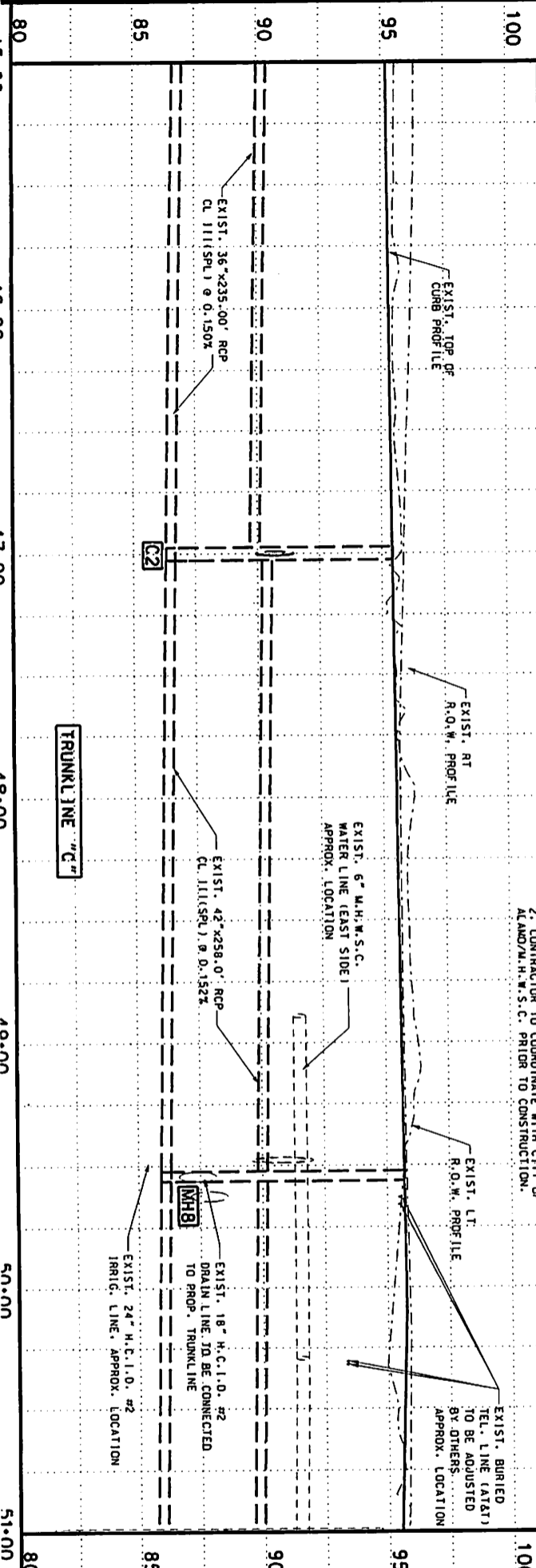
MATCHLINE STA. 45+00



MATCHLINE STA. 51+00

STR. I.D.	DESCRIPTION	STA./OFFSET	EXIST. TOP ELEV.	EXIST. JOIN ELEV.	EXIST. TEMP. INLET HEIGHT	PROP. TOP ELEV.	PROP. INLET HEIGHT
C1	18" INLET W/1-EXT.	STA. 47+00.00 - 24.0' LT	93.13	90.33	2.80	96.45	95.48 - 5.10
C2	18" INLET W/1-EXT.	STA. 47+00.00 - 24.0' RT	92.32	90.52	1.80	96.45	95.54 - 4.91
MH8	MANHOLE	STA. 49+62.40 - 23.30' RT					

NOTE:
1. CONTRACTOR SHALL VERIFY ALL UTILITIES, HORIZONTAL AND VERTICAL INFORMATION IN THE FIELD. PRIOR TO CONSTRUCTION.
2. CONTRACTOR TO COORDINATE WITH CITY OF ALAMO/M.H.W.S.C. PRIOR TO CONSTRUCTION.



LEGEND

- ASPHALT DRIVEWAY
- CONCRETE DRIVEWAY
- TRAFFIC DIRECTION
- DOWN CURB
- SANITARY SEWER MANHOLE
- EXIST. STAMPPIPES
- TEL. W/1
- FIRE HYDRANT
- POWER POLE
- POWER POLE W/ LIGHT
- EXIST. MAIL BOX
- WATER VALVE
- TREE BUSH
- MONITOR WELL
- STRUCTURE TO BE RELOCATED BY CONTRACTOR
- EXIST. POWER POLES TO BE ADJUSTED BY OTHERS
- BM
- FLOW DIRECTION
- SS - SAN. SEWER LINE
- W - WATER LINE
- E - ELECT. LINE
- OH-TC - OVERHEAD ELECT./TEL./CABLE
- OH-T - OVERHEAD ELECT./TEL.
- OH-C - OVERHEAD ELECT./CABLE
- OH - OVERHEAD POWERLINE
- U/C Tel - UNDERGROUND TEL.
- G - GAS LINE
- SD - STORM DRAIN LINE
- EXIST. DRAIN PIPE



THE SEAL APPEARING ON THIS DOCUMENT WAS AUTHORIZED BY BOARD ORDER NO. 78 53989 DATE 4-11-12
 ATTENTION: OF A SEAL OR NOTIFICATION TO THE BOARD OF PROFESSIONAL ENGINEERS OF THE STATE OF TEXAS UNDER THE TEXAS ENGINEERING PRACTICE LAW

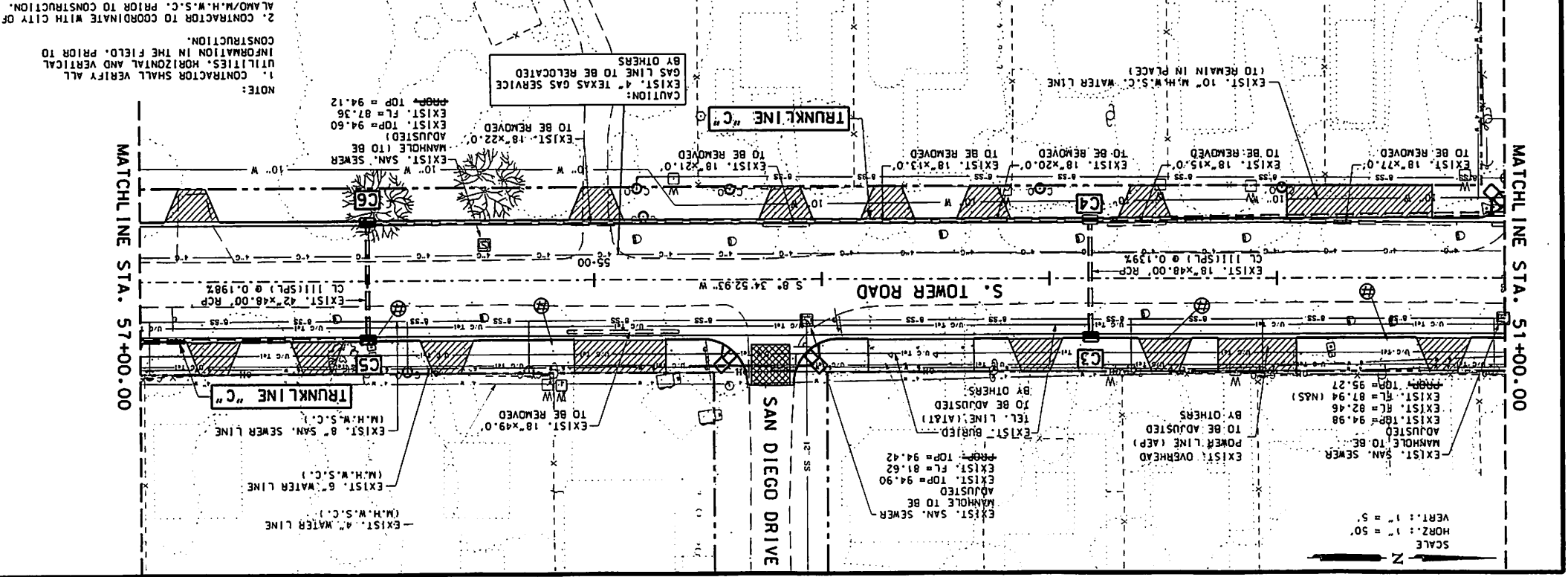
SHEET 3 OF 6
 HIDALGO COUNTY PRECINCT No.2
 TOWER ROAD
 UTILITY AND DRAINAGE
 RECORD DRAWING

R. Gutierrez
 Professional Engineers & Land Surveyors
Engineering Corporation
 100 E PARK AVENUE • PEARL TEXAS 78577
 (956) 555-7655 • FAX (956) 782-5888
 P.O. BOX 488

PROJECT NUMBER	COUNTY	HIGHWAY NO.
DRAWN BY:		TOWER ROAD
CHECKED BY:		SHEET NO.

LEGEND

- ASPHALT DRIVEAWAY
- CONCRETE DRIVEAWAY
- TRAFFIC DIRECTION
- TURNOUTS
- DOWN CURB
- SANITARY SEWER MANHOLE
- EXIST. STANDPIPES
- TEL. MARKER
- FIRE HYDRANT
- POWER POLE W/LIGHT
- POWER POLE
- EXIST. MAIL BOX
- WATER VALVE
- TREE BUSH
- MONITOR WELL
- STRUCTURE TO BE RELOCATED BY CONTRACTOR
- EXIST. POWER POLES TO BE ADJUSTED BY OTHERS
- BM
- FLOW DIRECTION
- SAN. SEWER LINE
- WATER LINE
- ELEC. LINE
- OVERHEAD ELEC./TEL. CABLE
- OVERHEAD ELEC./TEL. LINE
- OVERHEAD POWERLINE
- OVERHEAD POWERLINE (OH)
- UNDERGROUND TEL. LINE
- GAS LINE
- STORM DRAIN LINE
- EXIST. DRAIN PIPE



STR. I.D.	DESCRIPTION	STA./OFFSET	EXIST. TOP ELEV.	EXIST. JOIN TEMP. INLET ELEV.	EXIST. PROP. HEIGHT	EXIST. PROP. TOP ELEV.	EXIST. PROP. INLET HEIGHT
C3	TY "E" INLET W/1-EXT.	STA. 52+82.00, 24.0' LT.	94.79	91.99	2.80	95.04	3.06
C4	TY "E" INLET	STA. 52+82.00, 24.0' RT.	92.97	90.22	2.75	95.02	4.83
C5	TY "E" INLET W/1-EXT.	STA. 56+00.00, 24.0' LT.	94.15	91.40	2.75	94.17	2.81
C6	TY "E" INLET W/1-EXT.	STA. 56+00.00, 24.0' RT.	92.77	90.02	2.75	94.28	4.19

**HIDALGO COUNTY PRECINCT NO.2
TOWER ROAD
UTILITY AND DRAINAGE
RECORD DRAWING**

SHEET 4 OF 6

DATE: _____ BY: _____

PROJECT NUMBER _____ COUNTY _____ HIGHWAY NO. _____

DRAWN BY: _____ CHECKED BY: _____

R. Gutierrez
Professional Engineers & Land Surveyors
130 E. PARK AVENUE • PEARL TEXAS 78271
(TEL) 956 782-2557 • (FAX) 956 782-2558
PRAL No. 485

THE SEAL APPEARING ON THIS DOCUMENT WAS AUTHORIZED BY BOARD ORDER NO. 12, 63948 DATE: 6-21-12 ALTERATION OF A SEALED DOCUMENT WITH PROPER NOTATION TO THE REGISTERED PROFESSIONAL ENGINEER IS AN OFFENSE UNDER THE TEXAS ENGINEERING PRACTICE LAW



DRAWN BY: _____ CHECKED BY: _____
 SHEET NO. _____
 TOWER ROAD
 HIGHWAY NO. _____ COUNTY PROJECT NUMBER _____

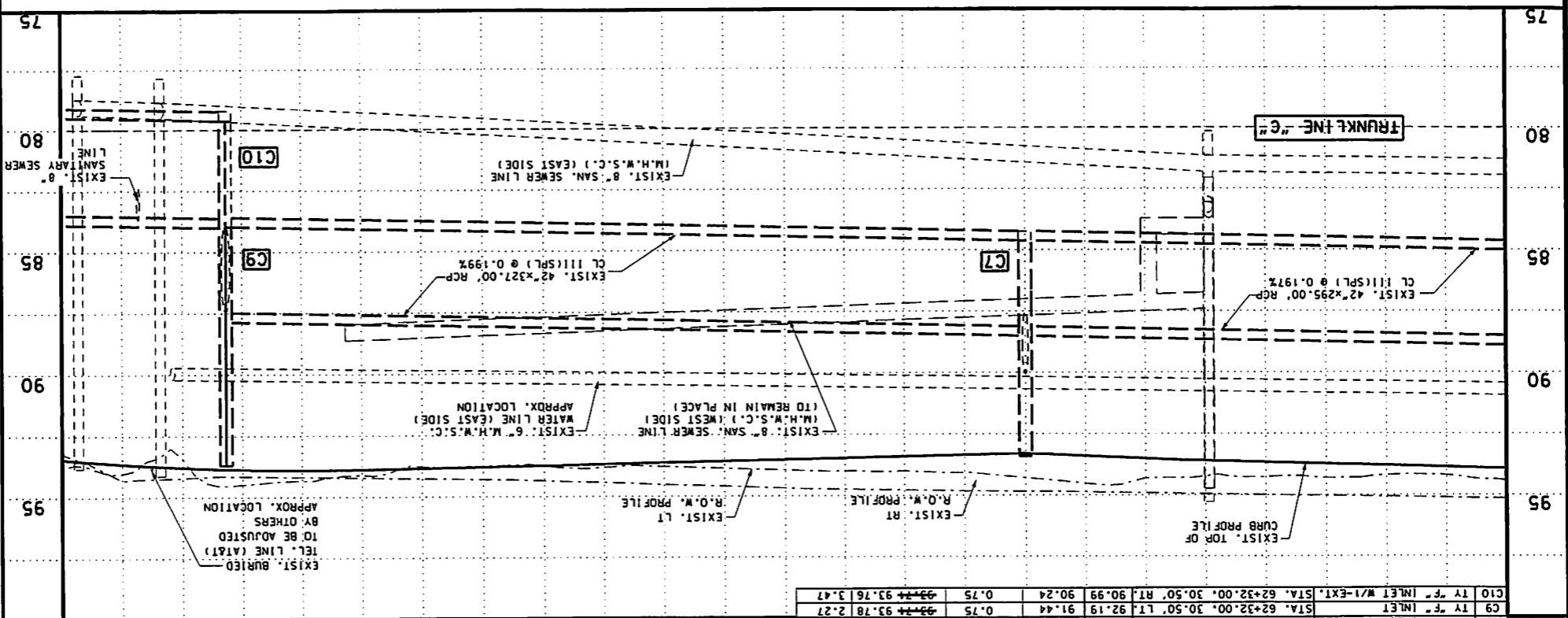
R. Gutierrez
 Professional Engineers & Land Surveyors
 100 E. PARK AVENUE • PLANO, TEXAS 75074
 (TEL) 936 782-2557 • (FAX) 936 782-2558
 PERM. NO. 465

REVISIONS
 DATE: _____ BY: _____

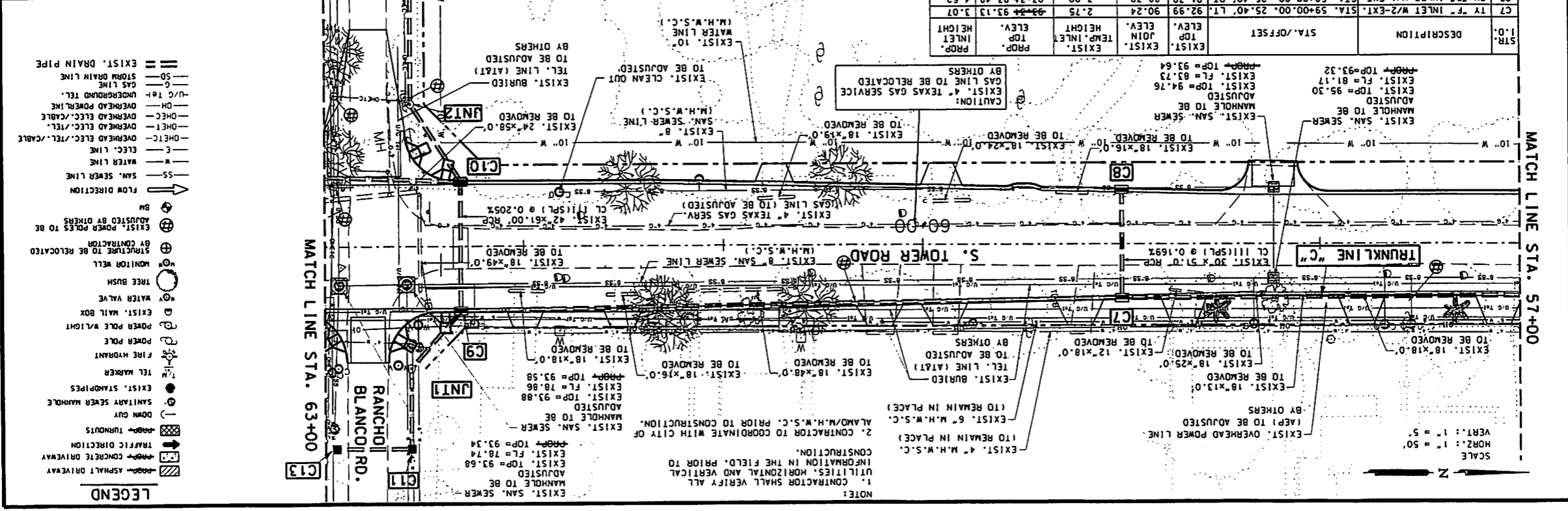
HIDALGO COUNTY PRECINCT NO. 2
TOWER ROAD
UTILITY AND DRAINAGE
RECORD DRAWING

SHEET 5 OF 6

THE SEAL APPEARING ON THIS DOCUMENT WAS AUTHORIZED BY AMARO GUTIERREZ, P.E. 65948
 DATE: 6-21-12
 ALTERATION OF A SEALED DOCUMENT WITHOUT PROPER NOTIFICATION TO THE RESPONSIBLE ENGINEER IS AN OFFENSE UNDER THE TEXAS ENGINEERING PRACTICE LAW



STA.	DESCRIPTION	STA./OFFSET	EXIST. TOP ELEV.	EXIST. JOINT TEMP. ELEV.	PROP. INLET ELEV.	PROP. INLET HEIGHT
C7	TY "F" INLET W/2-EXT.	STA. 59+00.00, 25.40' LT.	92.99	90.24	2.75	92.24
C8	TY "F" INLET W/1-EXT.	STA. 59+00.00, 25.40' RT.	91.79	88.79	3.00	93.48
C9	TY "F" INLET	STA. 62+32.00, 30.50' LT.	92.19	91.44	0.75	93.78
C10	TY "F" INLET W/1-EXT.	STA. 62+32.00, 30.50' RT.	90.99	90.24	0.75	93.76



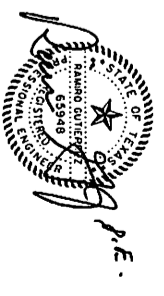
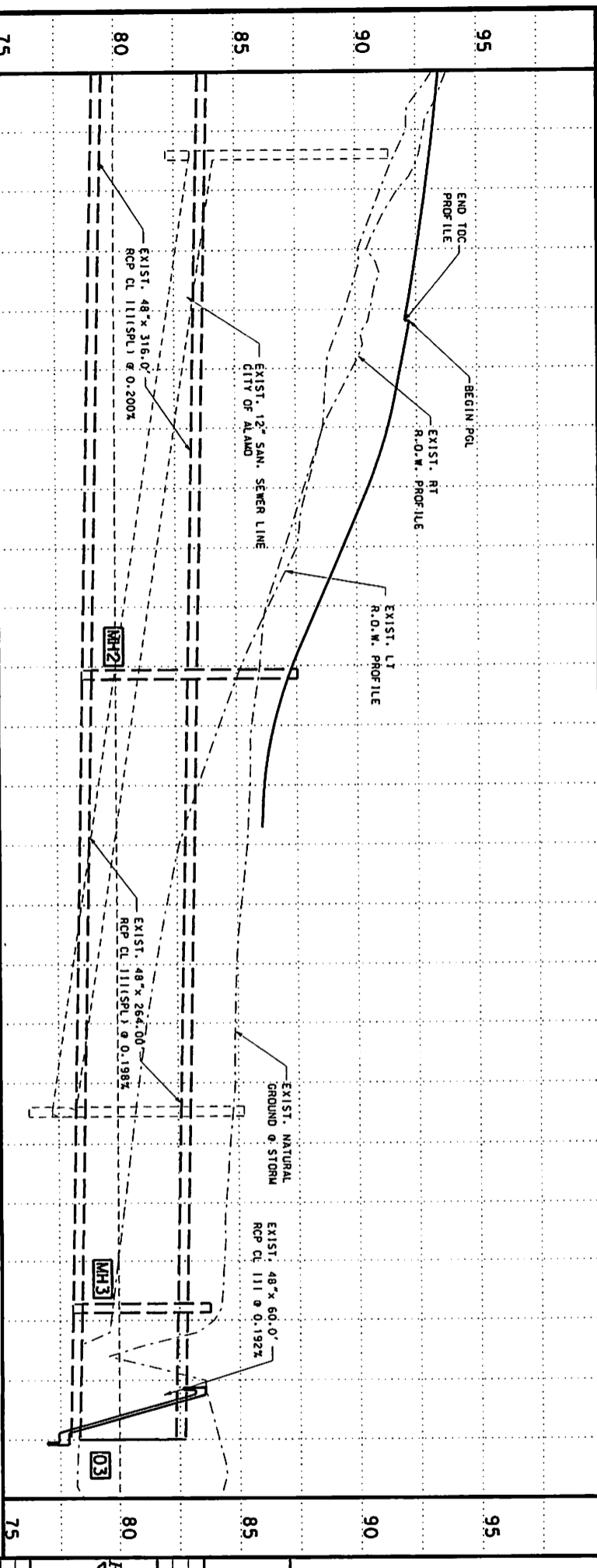
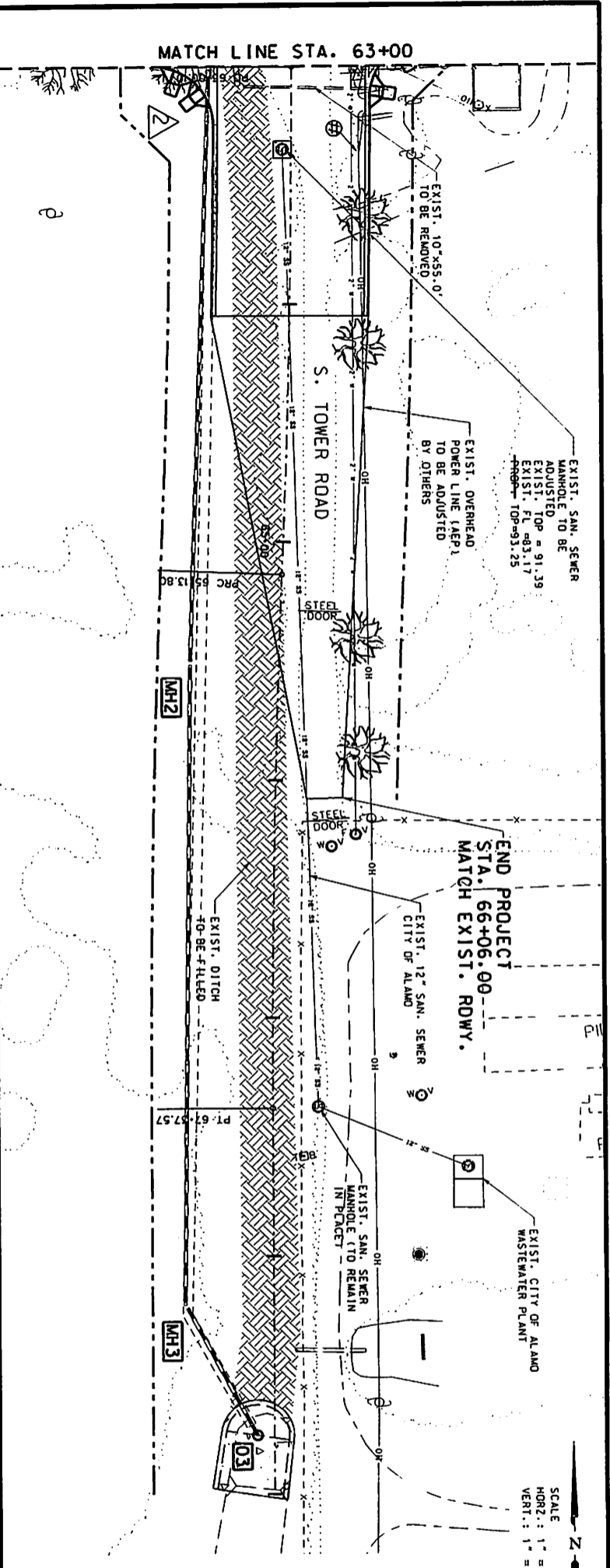
MATCH LINE STA. 57+00

SCALE
 HORIZ.: 1" = 50'
 VERT.: 1" = 5'

LEGEND

- ASPHALT DRIVEWAY
- CONCRETE DRIVEWAY
- TRAFFIC DIRECTION
- TURBOUNTS
- DOWN GUY
- SANITARY SEWER MANHOLE
- EXIST. STANDPIPES
- TEL. WARDER
- FIRE HYDRANT
- POWER POLE W/ LIGHT
- EXIST. MAIL BOX
- WATER VALVE
- TREE BUSH
- MONITOR WELL
- STRUCTURE TO BE RELOCATED BY CONTRACTOR
- EXIST. POWER POLES TO BE ADJUSTED BY OTHERS
- BM
- FLOW DIRECTION
- SS - SAN. SEWER LINE
- W - WATER LINE
- E - ELEC. LINE
- OH-ETC - OVERHEAD ELEC. / TEL. / CABLE
- OH-E - OVERHEAD ELEC. / TEL.
- OH-C - OVERHEAD ELEC. / CABLE
- OH - OVERHEAD POWER LINE
- U/C TEL - UNDERGROUND TEL.
- G - GAS LINE
- SD - STORM DRAIN LINE

SCALE
HORIZ. : 1" = 50'
VERT. : 1" = 5'



THE SEAL APPEARING ON THIS DOCUMENT WAS AUTHORIZED BY BOARD ORDER 17, 5/29/08 DATE: 6-21-12
ALTERATION OF A SEAL OR NOTIFICATION TO THE BOARD OF ENGINEERING PRACTICE LAW

SHEET 6 OF 6

**HIDALGO COUNTY PRECINCT NO.2
TOWER ROAD
UTILITY AND DRAINAGE
RECORD DRAWING**

REVISIONS	DATE	BY

R. Gutierrez Professional Engineer & Land Surveyors
Engineers 100 E. PARK AVENUE • P.O. BOX 1807
Corporation (941) 955-702-2501 • (941) 955-702-2505
FIRM NO. 485

PROJECT NUMBER	COUNTY	HIGHWAY NO.
TOWER ROAD	HIDALGO	200
DRAWN BY	CHECKED BY	SHEET NO.
		75