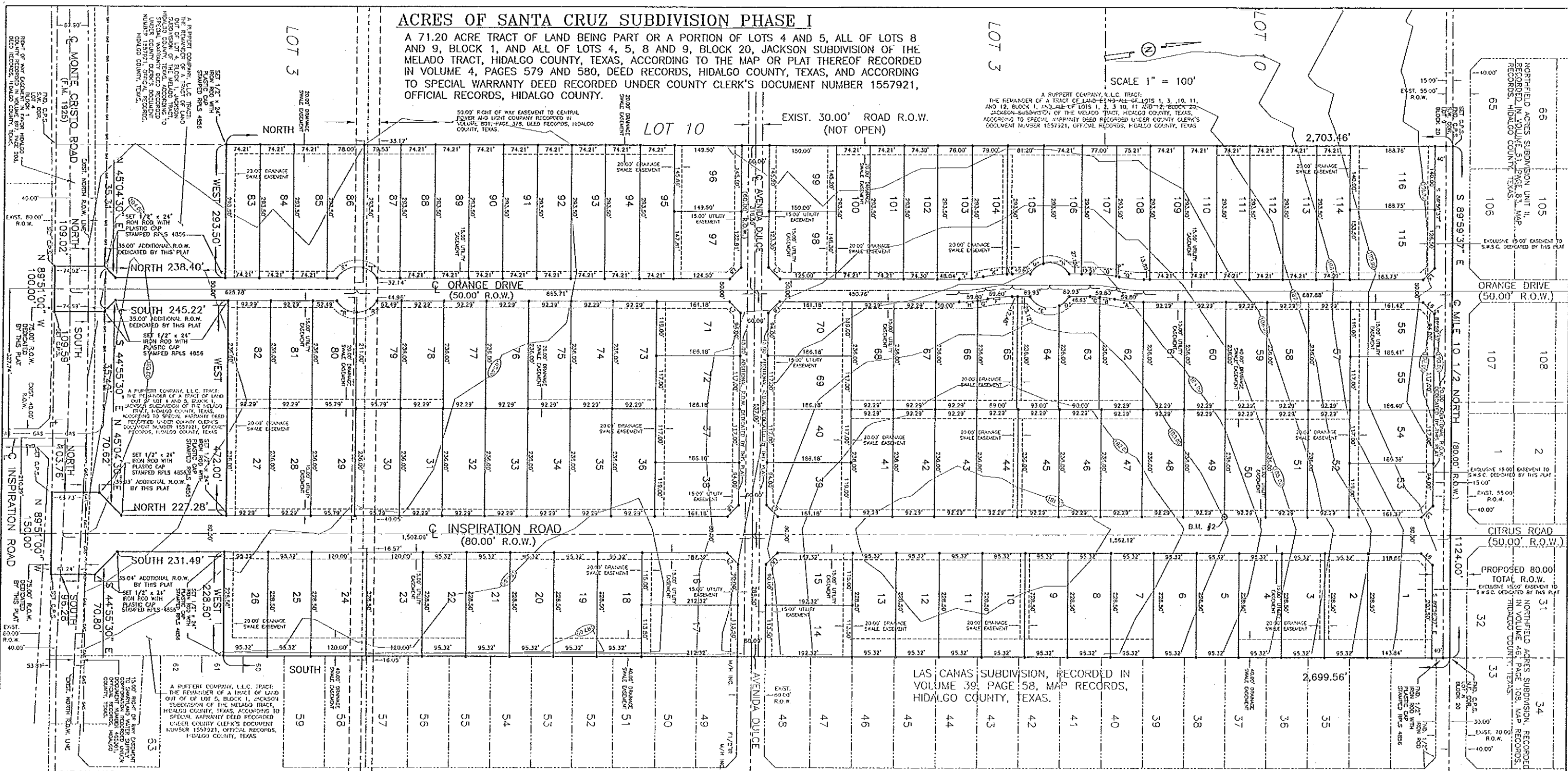


ACRES OF SANTA CRUZ SUBDIVISION PHASE I

A 71.20 ACRE TRACT OF LAND BEING PART OR A PORTION OF LOTS 4 AND 5, ALL OF LOTS 8 AND 9, BLOCK 1, AND ALL OF LOTS 4, 5, 8 AND 9, BLOCK 20, JACKSON SUBDIVISION OF THE MELADO TRACT, HIDALGO COUNTY, TEXAS, ACCORDING TO THE MAP OR PLAT THEREOF RECORDED IN VOLUME 4, PAGES 579 AND 580, DEED RECORDS, HIDALGO COUNTY, TEXAS, AND ACCORDING TO SPECIAL WARRANTY DEED RECORDED UNDER COUNTY CLERK'S DOCUMENT NUMBER 1557921, OFFICIAL RECORDS, HIDALGO COUNTY.

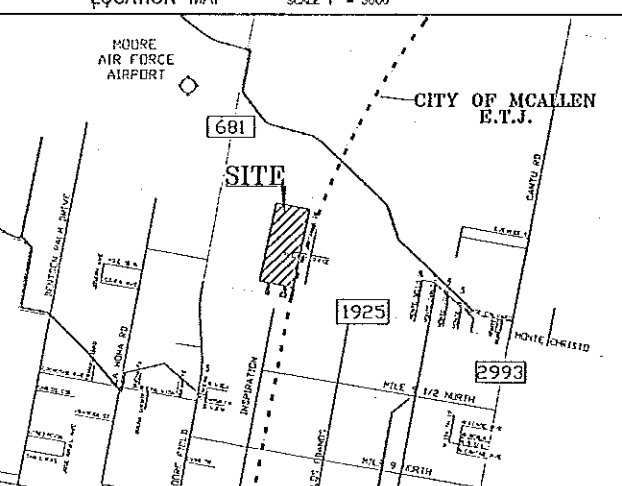


SCALE 1" = 100'

A SUPPORT COMPANY, L.L.C. TRACT: THE REMAINDER OF A TRACT OF LAND BEING ALL OF LOTS 1, 2, 3, 10, 11, AND 12, BLOCK 1, AND ALL OF LOTS 1, 2, 3, 10, 11 AND 12, BLOCK 20, JACKSON SUBDIVISION OF THE MELADO TRACT, HIDALGO COUNTY, TEXAS, ACCORDING TO SPECIAL WARRANTY DEED RECORDED UNDER COUNTY CLERK'S DOCUMENT NUMBER 1557921, OFFICIAL RECORDS, HIDALGO COUNTY, TEXAS.

EXIST. 30.00' ROAD R.O.W. (NOT OPEN)

LAS CANAS SUBDIVISION, RECORDED IN VOLUME 39, PAGE 58, MAP RECORDS, HIDALGO COUNTY, TEXAS.



CURVE DATA

CURVE	Δ	RADIUS	LENGTH
"A"	117°51'16"	325.00'	64.78'
"B"	02°41'12"	275.00'	33.14'
"C"	04°30'57"	275.00'	275.00'
"D"	34°25'51"	50.00'	30.05'
"E"	05°34'03"	50.00'	74.67'
"F"	117°51'16"	275.00'	54.82'
"G"	03°56'40"	325.00'	22.37'
"H"	07°28'19"	325.00'	12.41'
"I"	05°50'09"	275.00'	28.01'
"J"	03°35'08"	275.00'	26.81'
"K"	09°19'51"	325.00'	52.93'
"L"	02°05'24"	325.00'	11.65'
"M"	43°04'56"	50.00'	37.69'
"N"	76°59'04"	50.00'	67.12'
"O"	10°11'21"	325.00'	57.80'
"P"	01°11'55"	325.00'	6.97'
"Q"	117°51'16"	275.00'	52.82'
"R"	67°00'00"	50.00'	52.36'
"S"	75°04'22"	50.00'	65.51'
"T"	44°55'38"	50.00'	33.21'

AREA DATA TABLE

LOT	AREA (S.F.)	AC.
1	32,557.20	0.747
2-13	21,780.62	0.500
14	21,804.30	0.501
15	21,828.32	0.501
16	24,104.30	0.553
17	24,698.32	0.563
18-22	21,780.62	0.500
23-24	27,420.00	0.629
25-26	21,780.62	0.500
27-28	21,780.44	0.500
29-30	22,695.44	0.519
31-35	21,780.44	0.500
37	21,783.05	0.500
38-39	21,842.92	0.501
40	21,783.05	0.500
41-52	21,780.44	0.500
53	21,866.52	0.502
54	21,897.80	0.501
55	21,809.34	0.501
56	21,871.22	0.502
57-61	21,780.44	0.500

AREA DATA TABLE

LOT	AREA (S.F.)	AC.
62	23,364.72	0.536
63	22,040.41	0.506
64	21,780.22	0.500
65	21,739.42	0.501
66	21,819.33	0.501
67-68	21,780.44	0.500
69	21,783.05	0.500
70-71	21,842.92	0.501
72	21,783.05	0.500
73-78	21,780.44	0.500
79-80	21,833.71	0.501
81-82	21,780.44	0.500
83-85	21,780.64	0.500
86	22,807.61	0.501
87	22,821.39	0.526
88-95	21,780.63	0.500
96	21,783.05	0.500
97	21,785.10	0.500
98	21,932.50	0.503
99	21,780.00	0.500
100-102	21,780.64	0.500

AREA DATA TABLE

LOT	AREA (S.F.)	AC.
103	22,232.73	0.512
104	22,614.15	0.519
105	22,453.92	0.515
106	22,838.07	0.524
107	21,782.56	0.500
108	21,933.72	0.501
109-114	21,780.64	0.500
115	28,623.68	0.658
116	26,425.71	0.607

LINE DATA TABLE

DATA	BEARING	LENGTH
L1	N 45°04'30" E	70.82'
L2	S 44°55'30" E	70.80'
L3	N 45°04'30" E	35.31'
L4	S 44°55'30" E	35.40'
L5	S 44°59'48" E	21.21'
L6	N 45°00'12" E	21.70'
L7	S 45°00'00" E	96.79'
L8	S 45°00'00" W	110.91'

STATE OF TEXAS
COUNTY OF HIDALGO

I, THE UNDERSIGNED, A LICENSED PROFESSIONAL ENGINEER IN THE STATE OF TEXAS, DO HEREBY CERTIFY THAT THE PROPER ENGINEERING CONSIDERATIONS HAVE BEEN GIVEN TO THIS PLAN.



Alfonso Quintanilla
P.E. No. 95534
DATE: 7-6-12

STATE OF TEXAS
COUNTY OF HIDALGO

I, THE UNDERSIGNED, A REGISTERED PROFESSIONAL LAND SURVEYOR IN THE STATE OF TEXAS, DO HEREBY CERTIFY THAT THIS PLAN IS TRUE AND CORRECT AND WAS MADE AND PREPARED FROM AN ACTUAL SURVEY OF THE PROPERTY DONE ON THE GROUND UNDER MY SUPERVISION.



Alfonso Quintanilla
R.P.C.S. No. 4856
DATE: 5-16-12



FILED FOR RECORD IN
HIDALGO COUNTY
ARTURO GUJARDO, JR.
HIDALGO COUNTY CLERK

ON: _____ AT _____ AM/PM
INSTRUMENT NUMBER _____
OF THE MAP RECORDS OF HIDALGO COUNTY, TEXAS

BY: _____ DEPUTY

REVISION NOTES

No.	Sheet	REVISION	DATE	PREPARED

FILED IN DATA

DATE PREPARED	PREPARED BY	CHECKED BY	APPROVED BY
5-16-12	ALFONSO QUINTANILLA	ALFONSO QUINTANILLA	ALFONSO QUINTANILLA
DATE REVISION	REVISION	CHECKED BY	APPROVED BY