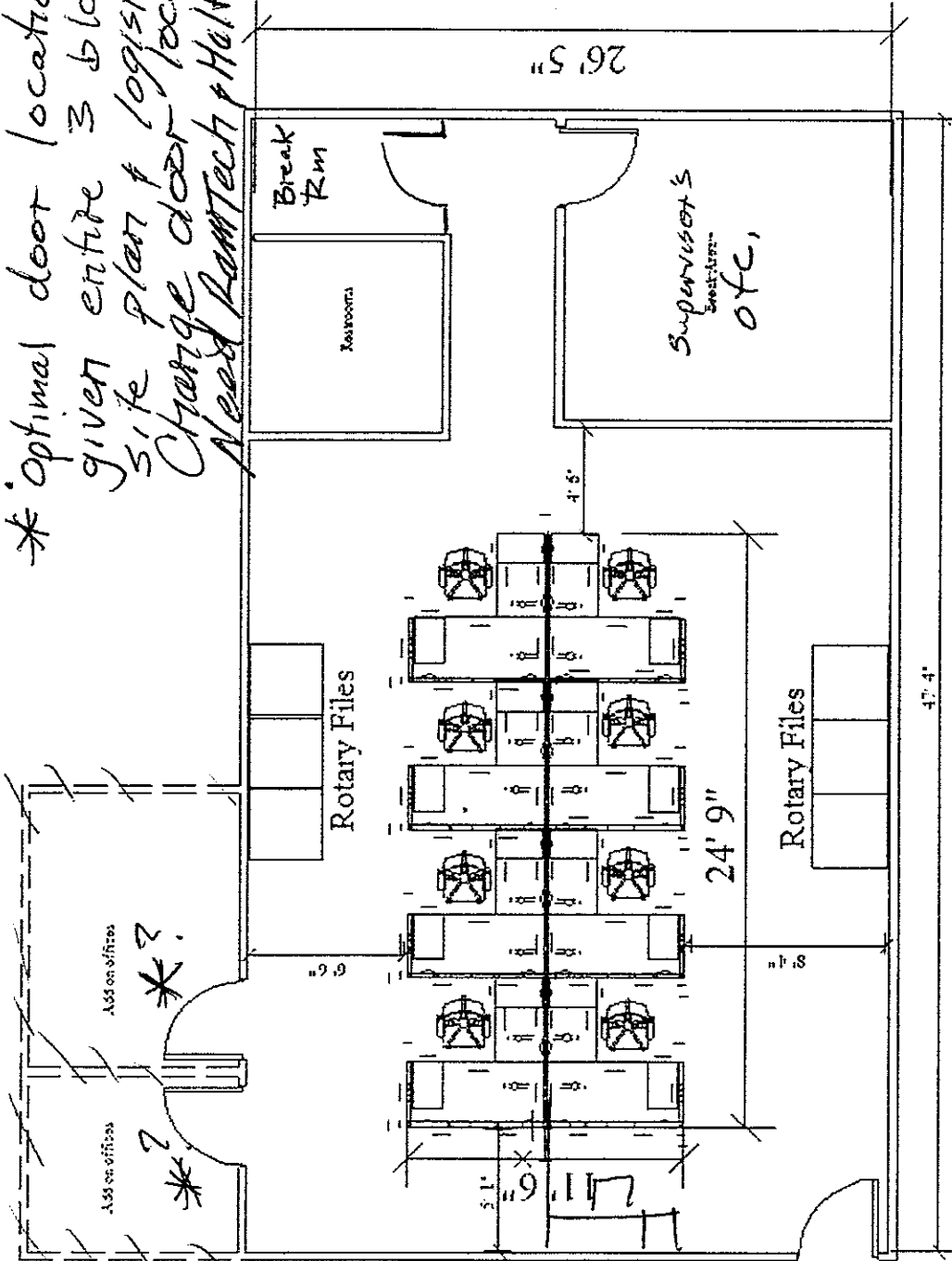


3RD Portable Bldg; Bldg "C", District Clerk's

? Optimal door location
 given entire 3 bldg
 site plan & logistics?
 Change door locations?
 Need RamTech & Half input.



9
Cubicles

*?

Site Plan Idea for 3rd Bldg, "C", for Distr. Clerk's
 All Intyre St.

10' 4" / 5'

+ 1800 sq ft enough for 2 District Clerks

11' x 18' = 198 sq ft
 5' x 8' = 40 sq ft
 3057 sq ft x 9 = 27513 sq ft
 8' x 6' = 48 sq ft = 96 sq ft
 Hallways x 2 = 160 sq ft
 4 1/2' Hallway x 40' = 180 sq ft

5' x 4' = 20 sq ft
 5' x 6' = 30 sq ft
 9' x 4' = 36 sq ft
 6' x 4' = 24 sq ft
 6' x 4' = 24 sq ft
 6' x 4' = 24 sq ft

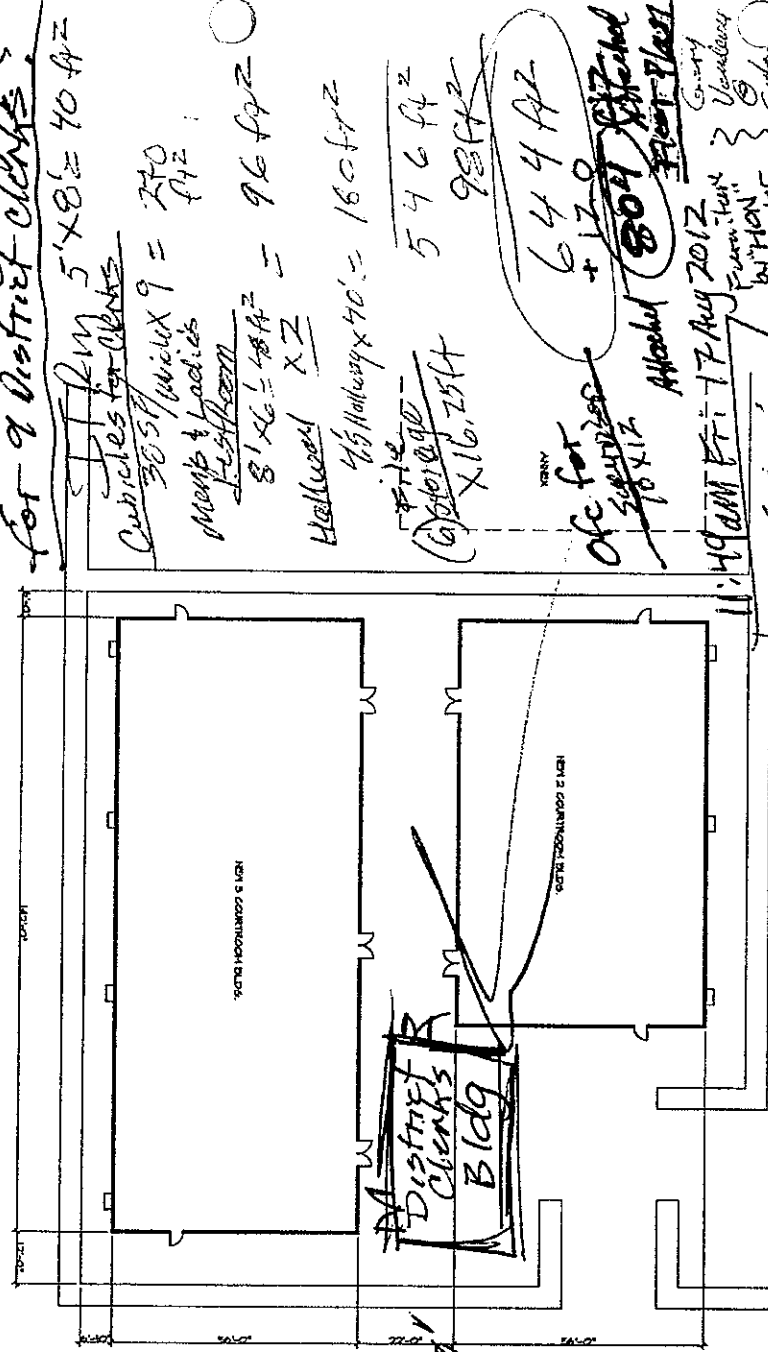
6' x 4' = 24 sq ft
 + 12' = 36 sq ft
 Attached 800 sq ft
 Front Plaza

11:40 AM Fri 17 Aug 2012
 County
 "HON" by
 Modular
 Furniture
 6' x 5' D
 11' x 10' 1/2'

Per 5' x 5' = 25 sq ft
 20' x 3' = 60 sq ft
 CPS: 2 clerks
 430M: 2 clerks
 5 CALZ: 1 clerk
 2 CALB: 1 clerk

9 Clerks + 5 Units
 11' x 10' 1/2'

File Storage Unit
 One Unit
 Metal Acker Method File Cabinet
 Footprint: 6' 5" x 2' 5" = 16.25 sq ft



Distr Clerk - Needs 2 CPS more space for 7 + 9 people.

County Clerk
 CALZ
 CALB

Note: Co Clerk will make do with existing space in CRT-H's

Fire Alarm not
 Fire Alarm not
 Fire Alarm not
 Fire Alarm not

HIDALGO COUNTY
 MODULAR COURT BLDGS.
 EDINBURG, TX



0 CERTIFICATE NOTICE		PLAN REVISIONS	
NO.	DATE	NO.	DATE