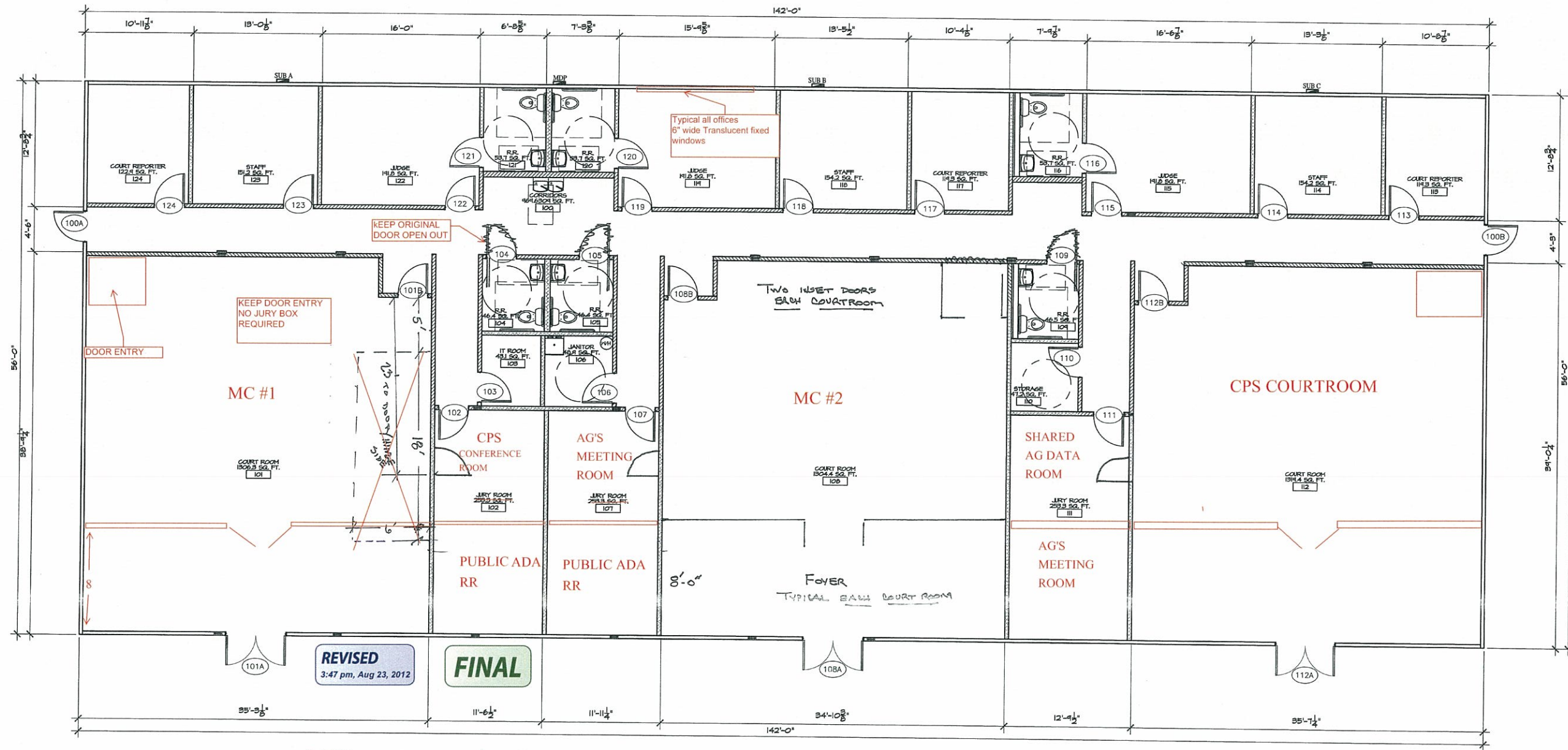


FLOOR PLAN LEGEND	
SYMBOL	DESCRIPTION
	MALL ( INTERIOR FULL HEIGHT MALL ); 4-8 1/4" TRACK UNLESS NOTED OTHERWISE
	1. 1/2" SIP WITH SINGLE BOTTOM PLATE AND DOUBLE TOP PLATE 2. 1/2" SIP WITH DOUBLE BOTTOM PLATE AND DOUBLE TOP PLATE
	MALL ( 1 HOUR FIRE RATED ); 4-8 1/4" TRACK UNLESS NOTED OTHERWISE
	1. 1/2" SIP WITH SINGLE BOTTOM PLATE AND DOUBLE TOP PLATE 2. 1/2" SIP WITH DOUBLE BOTTOM PLATE AND DOUBLE TOP PLATE 3. STANCHION WITH JOINT ON EITHER SIDE 4. FIRE RATED ALL PENETRATIONS
	DOOR SYMBOL - FOR SCHEDULE SEE SHEET A1
	SHEAR WALL - SEE COVER SHEET FOR CONSTRUCTION
	ELEVATION MARK. SEE SHEET A2 100 - OPERATOR HAND 100 - SHEAR
	SECTION MARK - SEE SHEET A3
NOTES	
1. STANDARD LEGEND - ALL SYMBOLS MAY NOT BE USED	
2. ALL DIMENSIONS SHOWN ARE FROM FACE OF FINISH EXCEPT AT EXTERIOR WALLS. EXTERIOR WALLS ARE DIMENSIONED FROM OUTSIDE EDGE OF WALL FRAMING TO FINISHED FACE.	



\* Jury boxes in 3 Court Room courtroom only

**1 FLOOR PLAN**  
SCALE: 3/16" = 1'-0"

PLAN REVISIONS

MARK	REVISION

© COPYRIGHT NOTICE  
A BARTHELEMY CLIENT HAS THE RIGHT TO DUPLICATE, USE, OR DISCLOSE THE DATA CONTAINED HEREIN FOR ANY PURPOSE ACCORDING TO THE TERMS AND CONDITIONS OF THE CONTRACT BETWEEN BARTHELEMY AND THE CLIENT. ALL OTHERS SHALL OBTAIN WRITTEN PERMISSION AUTHORIZING SUCH USE FROM BARTHELEMY.

THIS DOCUMENT IS RELEASED FOR THE PURPOSE OF CUSTOMER REVIEW AND MARK-UP UNDER THE AUTHORITY OF DIANE P. CORRIGAN, P.E. #88,466 ON

20-Aug-12  
IT IS NOT TO BE USED FOR CONSTRUCTION, BIDDING, OR PERMIT PURPOSES.

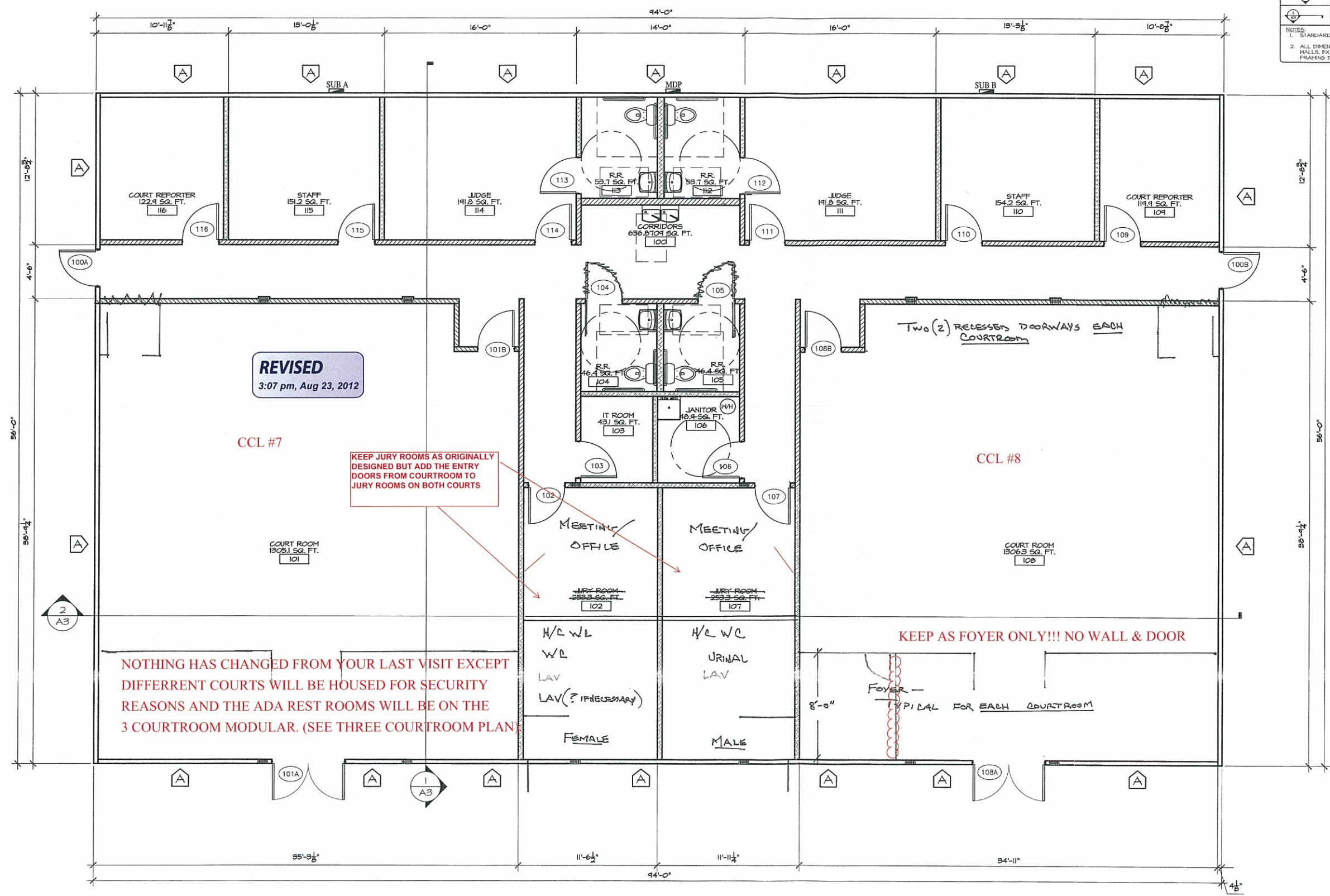
**RAMTECH**  
Building Systems, Inc.  
1405 S. IRTY. SUP. SOUTH  
MANASSAS, TEXAS 76065

PROJECT: HIDALGO COUNTY  
THREE COURT ROOM BLDG  
142'-0" X 56'-0" MODULAR OFFICE  
LOCATION: EDINBURG, TEXAS

PROJECT NUMBER: 120804  
DATE: 8/20/12  
DRAWN BY: LF  
SHEET NO. AI

SYMBOL	DESCRIPTION
	HALL ( INTERIOR FULL HEIGHT WALL ), 4-8" THICK UNLESS NOTED OTHERWISE 1. 42 SFP OF SUP WITH SINGLE BOTTOM PLATE AND DOUBLE TOP PLATE. 2. SOME ISOLATED - R-2 INSULATED REVISION
	HALL ( 1 HOUR FIRE RATED ), 4-8" THICK UNLESS NOTED OTHERWISE 1. 42 SFP WITH SINGLE BOTTOM PLATE AND DOUBLE TOP PLATE. 2. SOME ISOLATED - R-2 INSULATED REVISION TO CORING 3. SHIMMER STRIP ON EXTERIOR SIDE 4. FIRE CALL ALL INTERIORS
	DOOR SYMBOL - FOR SCHEDULE SEE SHEET A1
	SHEAR WALL - SEE COVER SHEET FOR CONSTRUCTION.
	ELEVATION MARK, SEE SHEET A2 100 - OPPOSITE END 100 - BREAK
	SECTION MARK - SEE SHEET A3

NOTES:  
1. STANDARD LEGEND - ALL SYMBOLS MAY NOT BE USED  
2. ALL DIMENSIONS SHOWN ARE FROM FACE OF FINISH, EXCEPT AT EXTERIOR WALLS. EXTERIOR WALLS ARE DIMENSIONED FROM OUTSIDE EDGE OF WALL FRAMING TO FINISHED FACE.



**REVISED**  
3:07 pm, Aug 23, 2012

KEEP JURY ROOMS AS ORIGINALLY DESIGNED BUT ADD THE ENTRY DOORS FROM COURTROOM TO JURY ROOMS ON BOTH COURTS

NOTHING HAS CHANGED FROM YOUR LAST VISIT EXCEPT DIFFERENT COURTS WILL BE HOUSED FOR SECURITY REASONS AND THE ADA REST ROOMS WILL BE ON THE 3 COURTROOM MODULAR. (SEE THREE COURTROOM PLAN)

KEEP AS FOYER ONLY!!! NO WALL & DOOR

**FLOOR PLAN**  
SCALE: 1/4" = 1'-0"

PLAN REVISIONS

MARK	DATE	DESCRIPTION

© COPYRIGHT NOTICE  
A LIMITED CLIENT HAS THE RIGHT TO REPRODUCE THESE DRAWINGS IN ACCORDANCE WITH, AND TO THE EXTENT OF THE CONTRACT BETWEEN GRANITECH AND THE CLIENT. GRANITECH WILL NOT BE RESPONSIBLE FOR ANY REPRODUCTION OR DUPLICATION FROM GRANITECH.

THIS DOCUMENT IS RELEASED FOR THE PURPOSE OF CUSTOMER REVIEW AND MARK-UP UNDER THE AUTHORITY OF DIANE P. CORRIGAN, P.E. #88,466 ON

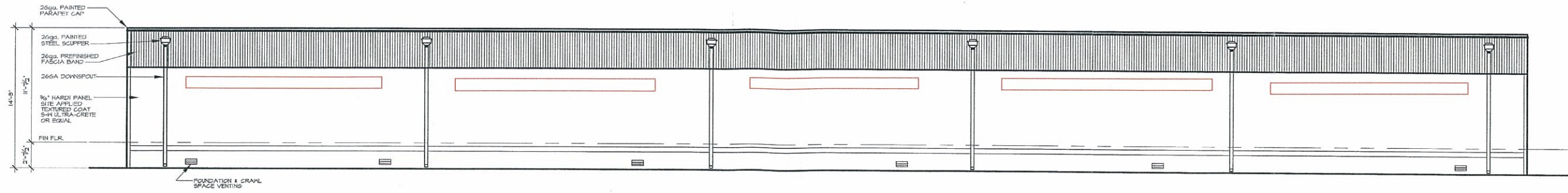
20-Aug-12  
IT IS NOT TO BE USED FOR CONSTRUCTION, BIDDING, OR PERMIT PURPOSES.

**RAMTECH**  
Building Systems, Inc.  
1403 U.S. HWY. 897, SOUTH  
MANSFIELD, TEXAS 77003

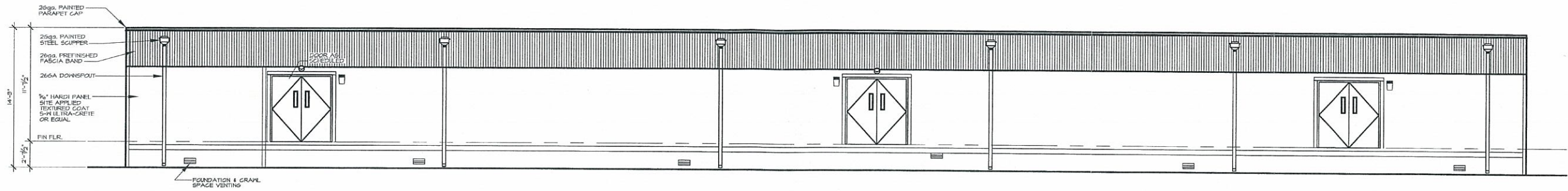
PROJECT: HIDALGO COUNTY  
TWO COURT ROOM BLDG  
94'-0" X 56'-0" MODULAR OFFICE  
EDINBURG, TEXAS

PROJECT NUMBER: 11  
DATE: 8/20/12  
DRAWN BY: LH  
SHEET NO. A1

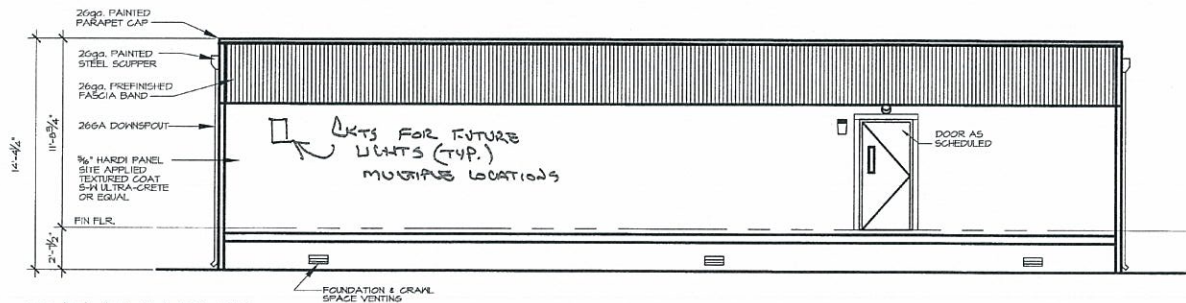
—02



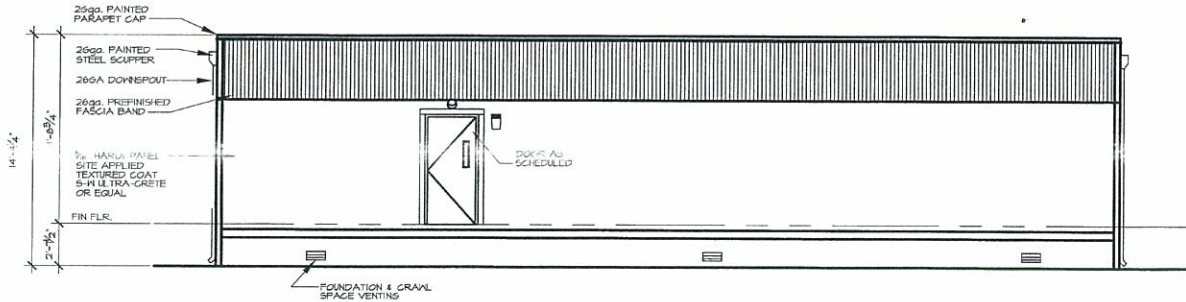
**1 ELEVATION**  
SCALE: 3/16" = 1'-0"



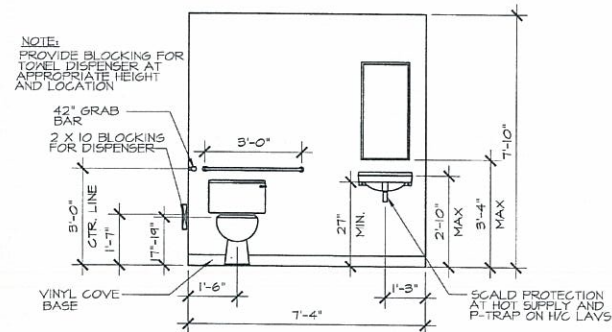
**2 ELEVATION**  
SCALE: 3/16" = 1'-0"



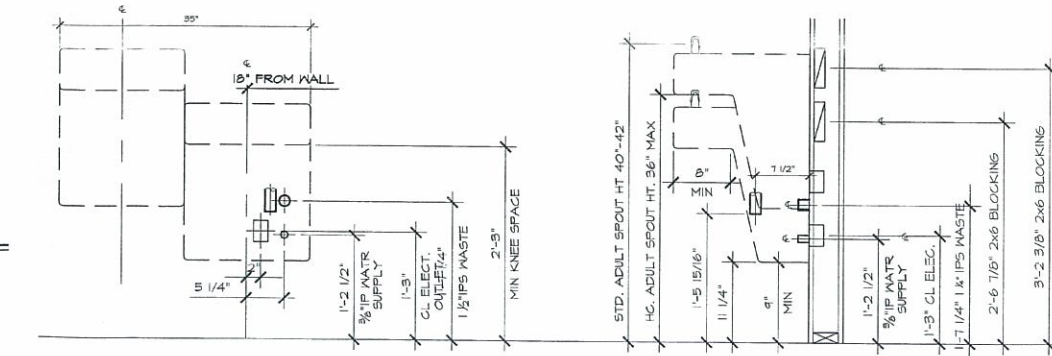
**3 ELEVATION**  
SCALE: 3/16" = 1'-0"



**4 ELEVATION**  
SCALE: 3/16" = 1'-0"



**5 ELEVATION**  
SCALE: 3/8" = 1'-0"



**6 ELEVATION**  
SCALE: 1" = 1'-0"

MARK	REVISIONS

**© COPYRIGHT NOTICE**  
A RAMECH CLIENT HAS THE RIGHT TO DUPLICATE, USE OR DISCLOSE THE DATA HEREIN IN THESE DRAWINGS IN CONNECTION WITH THE CONTRACT BETWEEN RAMECH AND THE CLIENT. ALL OTHERS SHALL OBTAIN WRITTEN PERMISSION AUTHORIZING REPRODUCTION FROM RAMECH.

THIS DOCUMENT IS RELEASED FOR THE PURPOSE OF CUSTOMER REVIEW AND MARK-UP UNDER THE AUTHORITY OF DIANE P. CORRIGAN, P.E. #88,486 ON

20-Aug-12  
IT IS NOT TO BE USED FOR CONSTRUCTION, BIDDING, OR PERMIT PURPOSES.

**RAMECH**  
Building Systems, Inc.  
1406 U.S. HWY. 297 SOUTH  
MANORFIELD, TEXAS 76063

PROJECT: **HIDALGO COUNTY THREE COURT ROOM BLDG**  
142'-0" X 56'-0" MODULAR OFFICE  
LOCATION: **EDINBURG, TEXAS**

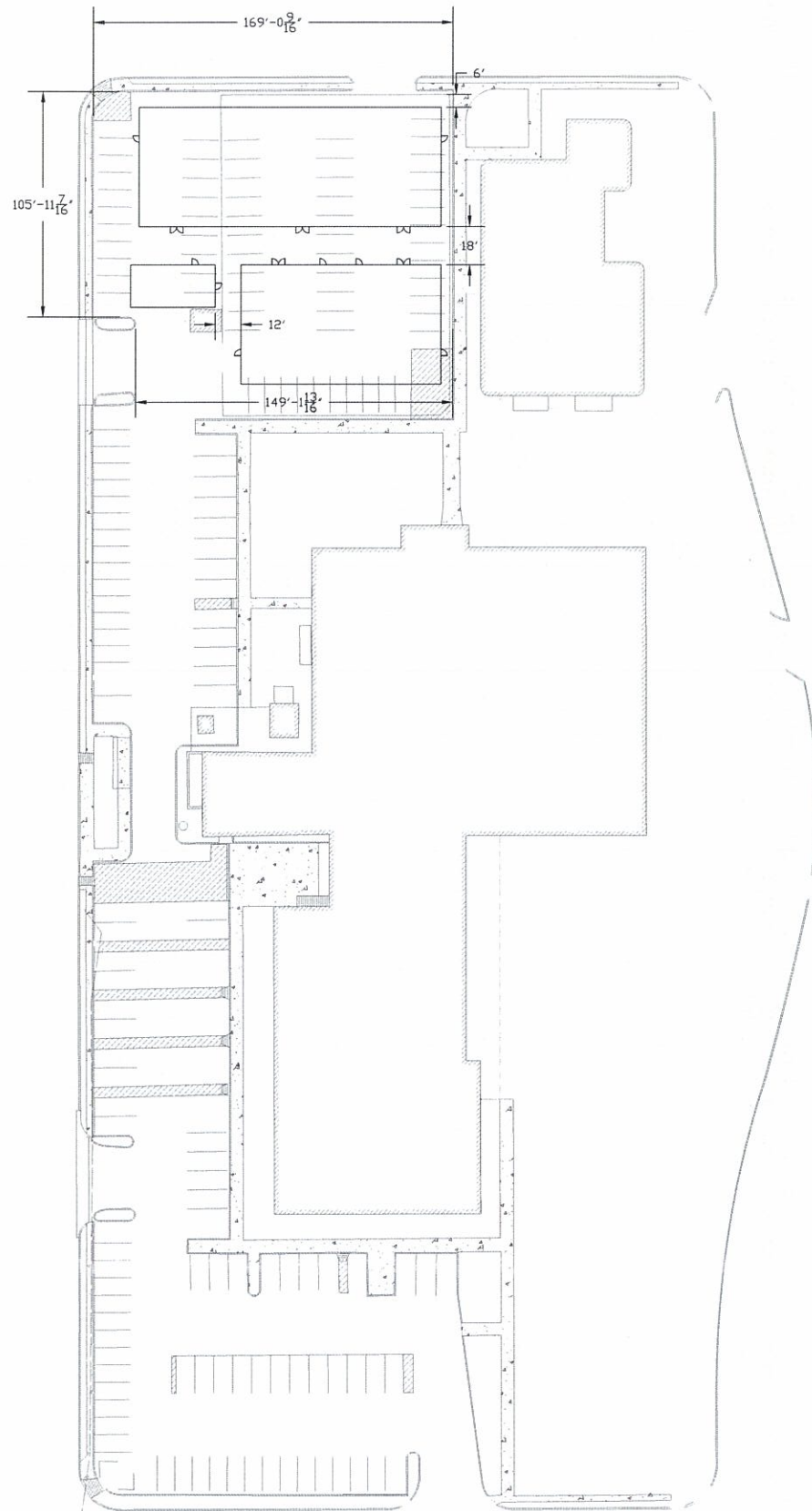
PROJECT NUMBER: **120804**  
DATE: **8/20/12**  
DRAWN BY: **LF**  
SHEET NO.: **A2**

\$PLTDRVSS

\$MODELNAMES

\$SUBS\$\$CLIENTS\$\$FILES

\$DATES \$TIMES



**01 SITE PLAN**  
SCALE: 1" = 40'-0"

**PROJECT PROGRESS PRINT**  
**NOT FOR CONSTRUCTION**

**HIDALGO COUNTY COURTHOUSE  
MODULAR BUILDINGS &  
PARKING LOT**

Edinburg, Texas



**HALFF**  
6000 WEST MILITARY, SUITE 100  
MCALLEN, TEXAS 78103  
TEL: (361) 664-0286  
FAX: (361) 664-0282

Revision No.	Date	Description

TBPE FIRM #F-312

Project No.: XXXXX  
Issued: AUGUST 2012  
Drawn By:  
Checked By:  
Scale: AS NOTED  
Sheet Title

Sheet Number