

TEDSI INFRASTRUCTURE GROUP
Consulting Engineers
 1201 East Expressway 83 • Mission, Texas 78572
 Tel: (956) 424-7898
 Fax: (956) 424-7022

HIDALGO COUNTY
 OCT 17 2012
 DRAINAGE DISTRICT NO. 1

October 17, 2012
 Project No: 2010-1052-01
 Invoice No: 20121296

Ms. Minerva Luna
 Hidalgo County Drainage District No. 1
 902 North Doolittle Road
 Edinburg, TX 78542

Project 2010-1052-01 HCMDS Phase II - J-09 Lateral Drain Ditch

Design and Right of Way Mapping of HCMDS Phase II - J-09 Lateral Drain Ditch
Work Authorization No. 1
P. O. No. 636565

Professional Services from February 01, 2012 to September 30, 2012

Fee

Billing Phase	Fee	Percent Complete	Earned	Previous Fee Billing	Current Fee Billing
Engineering Services	661,400.00	100.00	661,400.00	661,400.00	0.00
Engineering Services Supplemental No. 3	8,562.04	63.00	5,394.09	0.00	5,394.09
Basic Topography Services	188,000.00	100.00	188,000.00	188,000.00	0.00
Control Points and Benchmarks	75,000.00	90.00	67,500.00	67,500.00	0.00
ROW Parcels Donated	73,500.00	100.00	73,500.00	73,500.00	0.00
ROW Parcels Purchased	150,000.00	100.00	150,000.00	150,000.00	0.00
Geotechnical	45,000.00	100.00	45,000.00	45,000.00	0.00
Construction Field Staking - Supple No. 3	24,059.00	90.00	21,653.10	7,217.70	14,435.40
Total Fee	1,225,521.04		1,212,447.19	1,192,617.70	19,829.49

Total Fee 19,829.49

Billing Summary

	Current	Prior	To-Date
Total Billings	19,829.49	1,192,617.70	1,212,447.19
Total Fee			1,225,521.04
Remaining Fee			13,073.85

Total this Invoice \$19,829.49

cc: Commissioner Joseph Palacios

Please remit payment to: TEDSI Infrastructure Group; 10260 738 Highway 6 South, Suite 430, Houston, TX 77079

Authorized By:

Mark W. Luper
 Mark W. Luper, P.E., RPLS
 Executive Vice President

Date:

10.17.12

RECEIVED
 OFFICE OF EXECUTIVE OFFICER
 ON: 10/18/12 BY: *[Signature]*

10/17/12
10/17/12
10/17/12

HIDALGO COUNTY
OCT 17 2012
DRAINAGE DISTRICT #1

[Handwritten signature]

Point #	Northing	Easting	Ortho. Ht	Code	Stationing	Comments	PROFILE	CL	TOP OF BANK	
							ELEVATION	CUT	ELEVATION	FILL
3039	16659420.60	1056638.84	158.99		1+00	Hub	148.28	-10.71	158.99	0.00
3040	16659404.96	1056737.61	158.96		2+00	Hub	147.98	-10.98	158.96	0.00
3041	16659389.31	1056836.38	159.02		3+00	Hub	147.68	-11.34	159.02	0.00
3042	16659373.66	1056935.15	158.92		4+00	Hub	147.38	-11.54	158.92	0.00
3043	16659358.02	1057033.91	158.92		5+00	Hub	147.08	-11.84	158.92	0.00
3044	16659342.37	1057132.68	158.92		6+00	Hub	146.78	-12.14	158.92	0.00
3045	16659326.72	1057231.45	158.95		7+00	Hub	146.48	-12.47	158.95	0.00
3046	16659311.08	1057330.22	158.89		8+00	Hub	146.18	-12.71	158.89	0.00
3047	16659295.43	1057428.99	158.86		9+00	Hub	145.88	-12.98	158.86	0.00
3048	16659279.78	1057527.76	157.2		10+00	Hub	145.58	-11.62	157.2	0.00
3049	16659264.14	1057626.52	157.24		11+00	Hub	145.28	-11.96	157.24	0.00
3050	16659248.49	1057725.29	157.55		12+00	Hub	144.98	-12.57	157.55	0.00
3051	16659232.84	1057824.06	155.14		13+00	Hub	144.68	-10.46	155.14	0.00
3052	16659217.20	1057922.83	155.23		14+00	Hub	144.38	-10.85	155.23	0.00
3053	16659201.55	1058021.60	155.07		15+00	Hub	144.08	-10.99	155.07	0.00
3054	16659185.90	1058120.37	153.15		16+00	Hub	143.78	-9.37	153.15	0.00
3055	16659180.43	1058154.94	153.49		16+35	Hub	143.67	-9.82	153.49	0.00
3056	16659166.35	1058243.83	151.58		17+25	Hub	143.31	-8.27	151.58	0.00
3057	16659154.61	1058317.90	151.53		18+00	Hub	143.09	-8.44	151.53	0.00
3058	16659138.97	1058416.67	151.74		19+00	Hub	142.79	-8.95	151.74	0.00
3059	16659123.32	1058515.44	150.67		20+00	Hub	142.49	-8.18	150.67	0.00
3060	16659107.67	1058614.21	150.67		21+00	Hub	142.19	-8.48	150.67	0.00
3061	16659092.03	1058712.98	150.99		22+00	Hub	141.89	-9.10	150.99	0.00
3062	16659076.38	1058811.74	149.31		23+00	Hub	141.59	-7.72	149.31	0.00
3063	16659060.73	1058910.51	149.75		24+00	Hub	141.29	-8.46	149.75	0.00
3064	16659045.09	1059009.28	147.02		25+00	Hub	140.99	-6.03	149.1	2.08
3065	16659029.44	1059108.05	144.67		26+00	Hub	140.69	-3.98	148.5	3.83
3066	16659013.79	1059206.82	143.1		27+00	Hub	140.39	-2.71	148	4.90
3067	16658998.15	1059305.59	144.66		28+00	Hub	140.09	-4.57	147.5	2.84
3068	16658982.50	1059404.35	144.22		29+00	Hub	139.79	-4.43	146.9	2.68
3069	16658966.85	1059503.12	144.1		30+00	Hub	139.49	-4.61	146.4	2.30
3070	16658951.21	1059601.89	144.41		31+00	Hub	139.19	-5.22	145.8	1.39
3071	16658935.56	1059700.66	143.98		32+00	Hub	138.89	-5.09	145.3	1.32
3072	16658919.91	1059799.43	144.2		33+00	Hub	138.59	-5.61	144.6	0.40
3073	16658904.27	1059898.20	144.13		34+00	Hub	138.29	-5.84	144.13	0.00
3074	16658888.62	1059996.96	144.08		35+00	Hub	137.99	-6.09	144.08	0.00
3075	16658872.97	1060095.73	143.74		36+00	Hub	137.29	-6.45	143.74	0.00
3076	16658859.21	1060182.65	143.89		36+88	Hub	137.42	-6.47	144.6	0.71

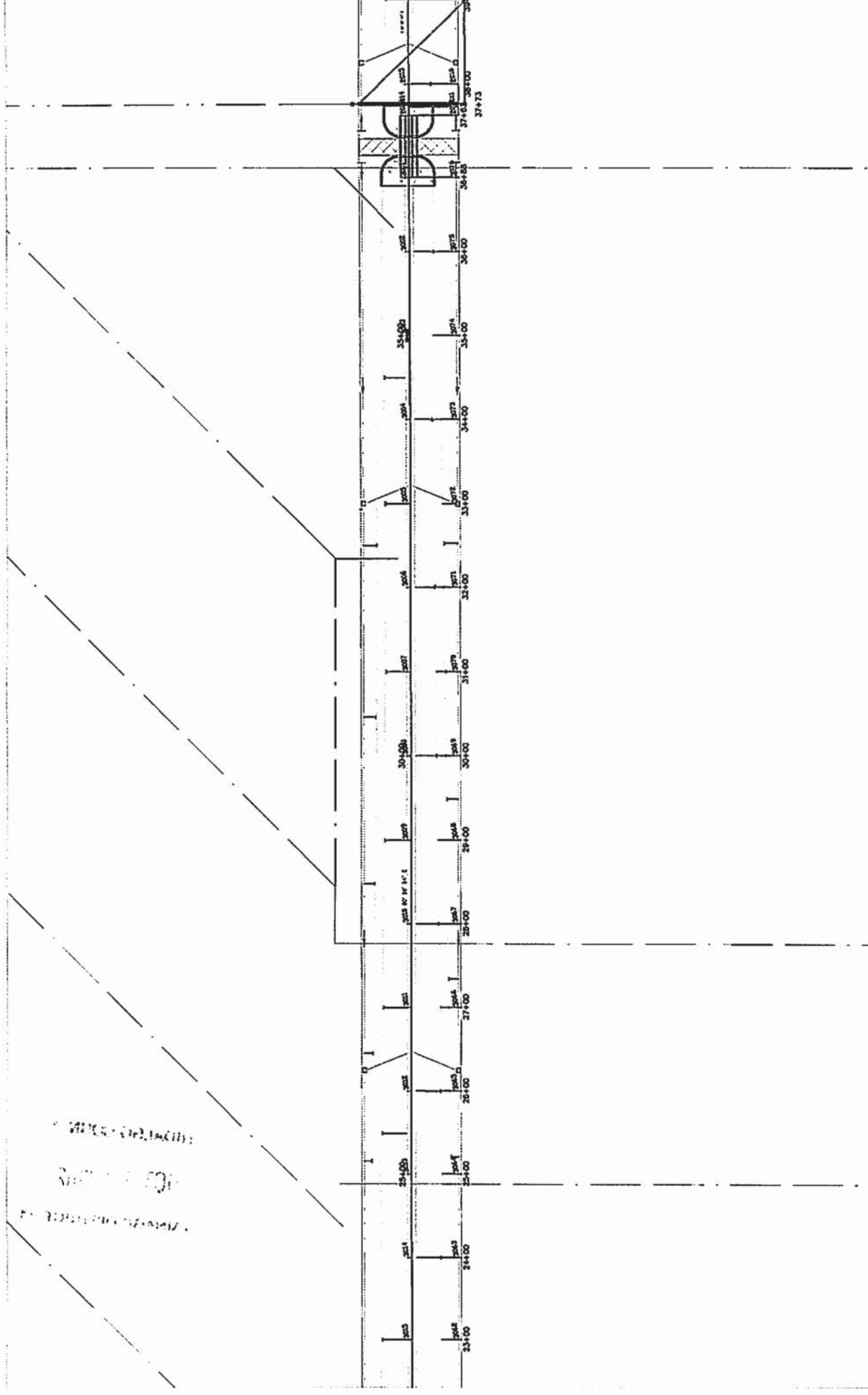
HIDALGO COUNTY
OCT 17 2012
DRAINAGE DISTRICT #1

Easting	Ortho. Ht	Code	Stationing	Comment	PROFILE ELEVATION	CL CUT	TOP OF BANK	
							ELEVATION	FILL
1061189.09	139.9	HT	O/S 47+50	HUB	134.24	-5.66	141.81	1.91
1061238.48	137.97	HT	O/S 48+00	HUB	134.09	-3.88	141.65	3.68
1061287.93	137.94	HT	O/S 48+50	HUB	133.94	-4	141.65	3.71
1061337.28	138.04	HT	O/S 49+00	HUB	133.79	-4.25	141.65	3.61
1061386.62	138.06	HT	O/S 49+50	HUB	133.64	-4.42	141.65	3.59
1061436.01	138.14	HT	O/S 50+00	HUB	133.49	-4.65	141.65	3.51
1061485.32	138.43	HT	O/S 50+50	HUB	133.34	-5.09	141.65	3.22
1061534.91	137.24	HT	O/S 51+00	HUB	133.19	-4.05	141.65	4.41
1061584.19	137.14	HT	O/S 51+50	HUB	133.04	-4.1	141.65	4.51
1061611.25	136.94	HT	O/S 51+77.40	HUB	132.95	-3.99	141.65	4.71
1061680.25	136.97	HT	O/S 52+09.76	HUB	132.86	-4.11	141.65	4.68

HIDALGO COUNTY
OCT 17 2012
DRAINAGE DISTRICT #1

Point #	Northing	Easting	Ortho. Ht	Code	Stationing	Comments	PROFILE	CL	TOP OF BANK	
							ELEVATION	CUT	ELEVATION	FILL
2001	16658034.50	1061139.80	140.67	HT	O/S 47+00	Hub	134.39	-6.28	141.97	1.30
2002	16658050.21	1061041.03	141.27	HT	O/S 46+00	Hub	134.69	-6.58	142.29	1.02
2003	16658065.81	1060942.21	141.10	HT	O/S 45+00	Hub	134.99	-6.11	142.61	1.51
2004	16658081.52	1060843.49	142.94	HT	O/S 44+00	Hub	134.29	-8.65	142.93	-0.01
2005	16658097.13	1060744.65	142.94	HT	O/S 43+00	Hub	135.59	-7.35	143.25	0.31
2006	16658112.78	1060645.86	142.96	HT	O/S 42+00	Hub	135.89	-7.07	143.25	0.29
2007	16658128.40	1060547.16	143.22	HT	O/S 41+00	Hub	136.19	-7.03	143.25	0.03
2008	16658144.09	1060448.39	142.89	HT	O/S 40+00	Hub	136.49	-6.40	143.25	0.36
2009	16658159.71	1060349.65	143.09	HT	O/S 39+00	Hub	136.79	-6.30	143.25	0.16
2010	16658175.37	1060250.89	142.59	HT	O/S 38+00	Hub	137.09	-5.50	143.25	0.66

HIDALGO COUNTY
OCT 17 2012
DRAINAGE DISTRICT #1



1:100 (1:100) (1:100)
 1:100 (1:100) (1:100)
 1:100 (1:100) (1:100)

HIDALGO COUNTY

OCT 17 2012

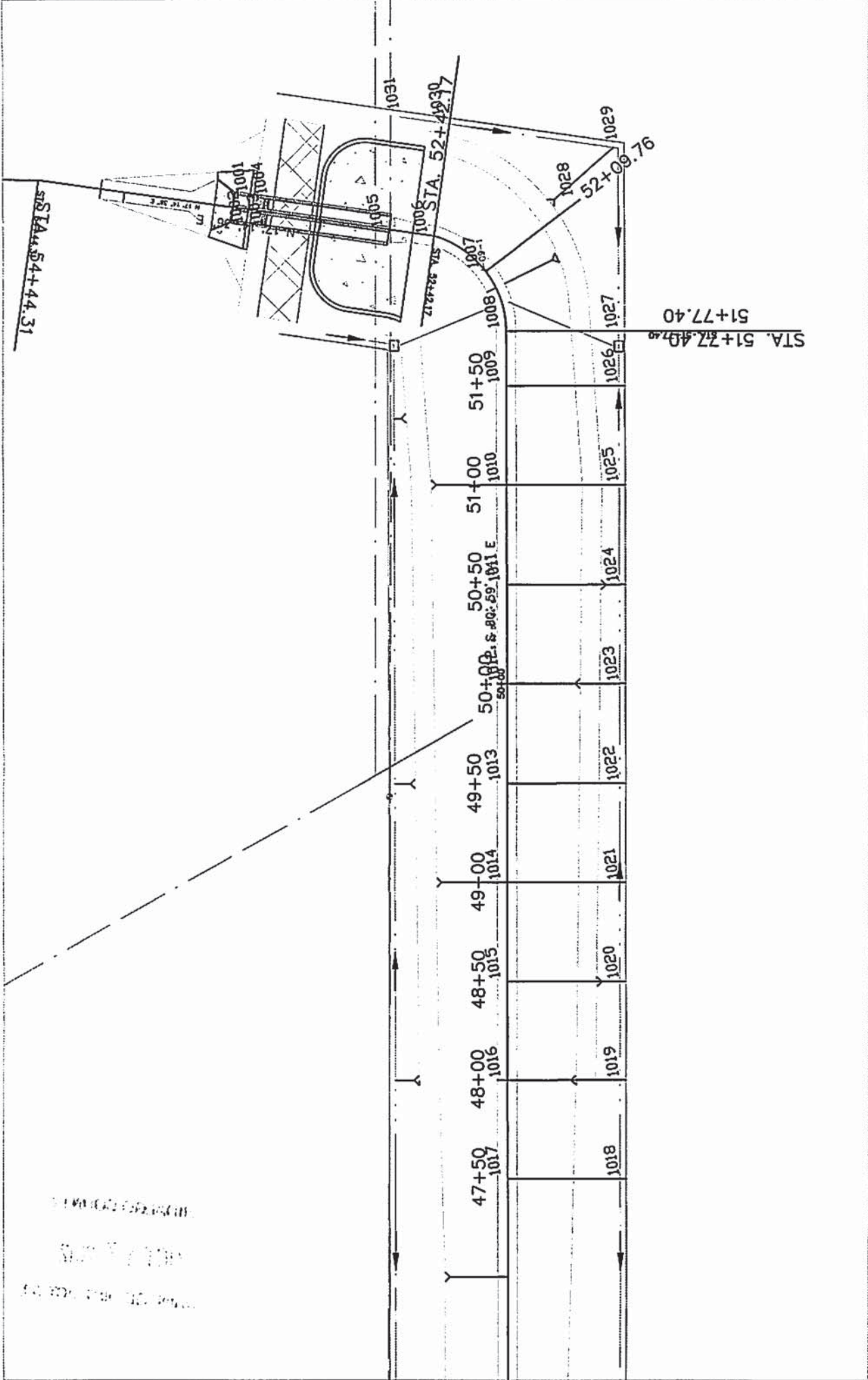
DRAINAGE DISTRICT #1

HIDALGO COUNTY
OCT 17 2012
DRAINAGE DISTRICT #1

HIDALGO COUNTY

OCT 17 2012

DRAINAGE DISTRICT #1



1. ALL DIMENSIONS ARE IN METERS.
 2. ALL ANGLES ARE IN DEGREES.
 3. ALL CURVES ARE CIRCULAR UNLESS OTHERWISE SPECIFIED.

HIDALGO COUNTY
OCT 17 2012
DRAINAGE DISTRICT #1

HIDALGO COUNTY
OCT 17 2012
DRAINAGE DISTRICT #1

EAST SIPHON



HIDALGO COUNTY

OCT 17 2012

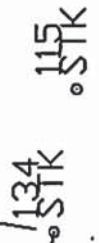
DRAINAGE DISTRICT #1

WEST SIPHON

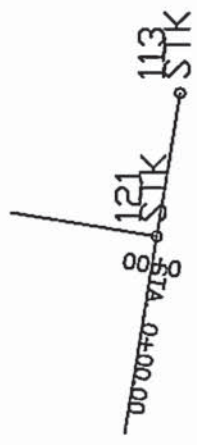
DATE: 10/10/54
BY: [illegible]
PROJECT: [illegible]



15+00
15+00



S 80° 55' 54" E



HIDALGO COUNTY

OCT 1-7 2012

DRAINAGE DISTRICT #1



TEDSI INFRASTRUCTURE GROUP

TEDSI

Consulting Engineers

1201 East Expressway 83 ♦ Mission, Texas 78572
Tel: (956) 424-7898
Fax: (956) 424-7022

Meeting Summary

PROJECT: J0-9 Siphons	TEDSI JOB NO.:
---------------------------------	-----------------------

CLIENT: Hidalgo County Drainage District No 1

SUBJECT: Minutes - Preconstruction Meeting
--

SUMMARY BY: Joe Vasquez, Project Designer, Mark Lupher, P.E. project Engineer

MEETING LOCATION: Hidalgo County Drainage Districts Office	MEETING DATE: August 24, 2012
--	---

ATTENDEES: See attached signup sheet
--

SUMMARY OF MEETING:
The following is our understanding of the subject matter covered in this meeting. If this differs from your understanding, please notify us.

- TEDSI Joe Vasquez**
- Distributed 4 copies of plan set to McAllen Construction
 - \$177,800.00 contract fee
 - 60 consecutive calendar days to complete projects
 - If you do not get substantial completion in 60 days, you will be late and more than likely will get penalized.
 - Penalty of \$1000/consecutive calendar day after 60 days.
 - Project Consist of 2 Siphons a 30" and 42"
 - Construction Staking to be done by TEDSI
 - Process as follows:
 - Construction
 - Any questions regarding design – call TEDSI
 - Admin
 - Submit RFP monthly to TEDSI, TEDSI to review RFP, after review McAllen Construction to sign/notarize.
 - NTP to be issued by Drainage District

Questions/Comments

HIDALGO COUNTY

OCT 17 2012

DRAINAGE DISTRICT #1

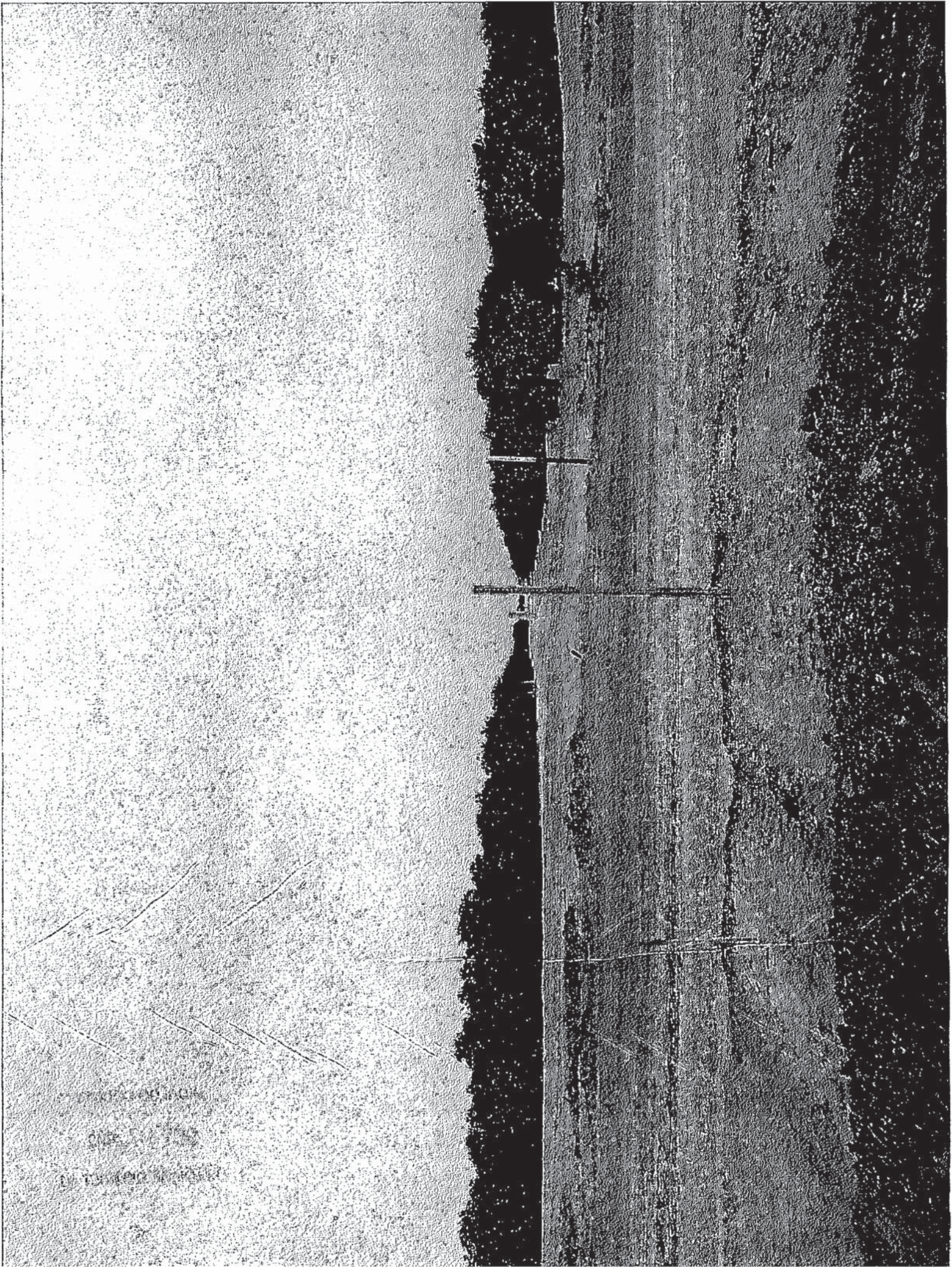
CUTS OFF CENTERLINE EAST SIPHON #1								
Point #	Sta.	Northing	Easting	Elev.	Code		FL	CUT
121	0+00	16658505.97	1058116.37	153.41	NG	C/L	147.5	5.91
133	0+50	16658555.22	1058124.5	152.76	NG	C/L	129.6	23.16
134	1+00	16658604.57	1058132.47	152.47	NG	C/L	132.21	20.26
135	1+34.80	16658638.92	1058138.08	154.17	NG	C/L	147.5	6.67
CUTS OFF OFFSETS								
113	0+00	16658501.04	1058146.16	151.75	Hub	30' O/S	147.5	4.25
114	0+50	16658550.33	1058154.14	151.94	Hub	30' O/S	129.6	22.34
115	1+00	16658599.73	1058162.11	151.91	Hub	30' O/S	132.21	19.7
116	1+34.80	16658634.07	1058167.67	152.09	Hub	30' O/S	147.5	4.59
CUTS OFF CENTERLINE WEST SIPHON #2								
Point #	Sta.	Northing	Easting	Elev.	Code		FL	CUT
139	0+00	16658271.07	1060461.49	142.83	NG	C/L	135.7	7.13
140	0+50	16658221.69	1060453.62	141.54	NG	C/L	126.17	15.37
141	1+00	16658172.25	1060445.8	141.86	NG	C/L	128.55	13.31
142	1+35.00	16658137.76	1060440.33	142.63	NG	C/L	135.7	6.93
CUTS OFF OFFSETS								
138	0+00	16658266.35	1060491.15	142.61	Hub	30' O/S	135.7	6.91
137	0+50	16658216.9	1060483.29	141.94	Hub	30' O/S	126.17	15.77
136	1+00	16658167.57	1060475.45	142.02	Hub	30' O/S	128.55	13.47
2	1+35.00	16658133.01	1060469.94	142.67	Hub	30' O/S	135.7	6.97
3		16657945.07	1061704.81	136.74	I.R		BENCHMARK	

11/11/2010 10:00 AM
 11/11/2010 10:00 AM
 11/11/2010 10:00 AM

HIDALGO COUNTY

OCT 17 2012

DRAINAGE DISTRICT #1



UNIVERSITY OF
SOUTH ALABAMA
LIBRARY

HIDALGO COUNTY
OCT 17 2012
DRAINAGE DISTRICT #1

VIEWED FROM AIR

VIEW FROM TOP

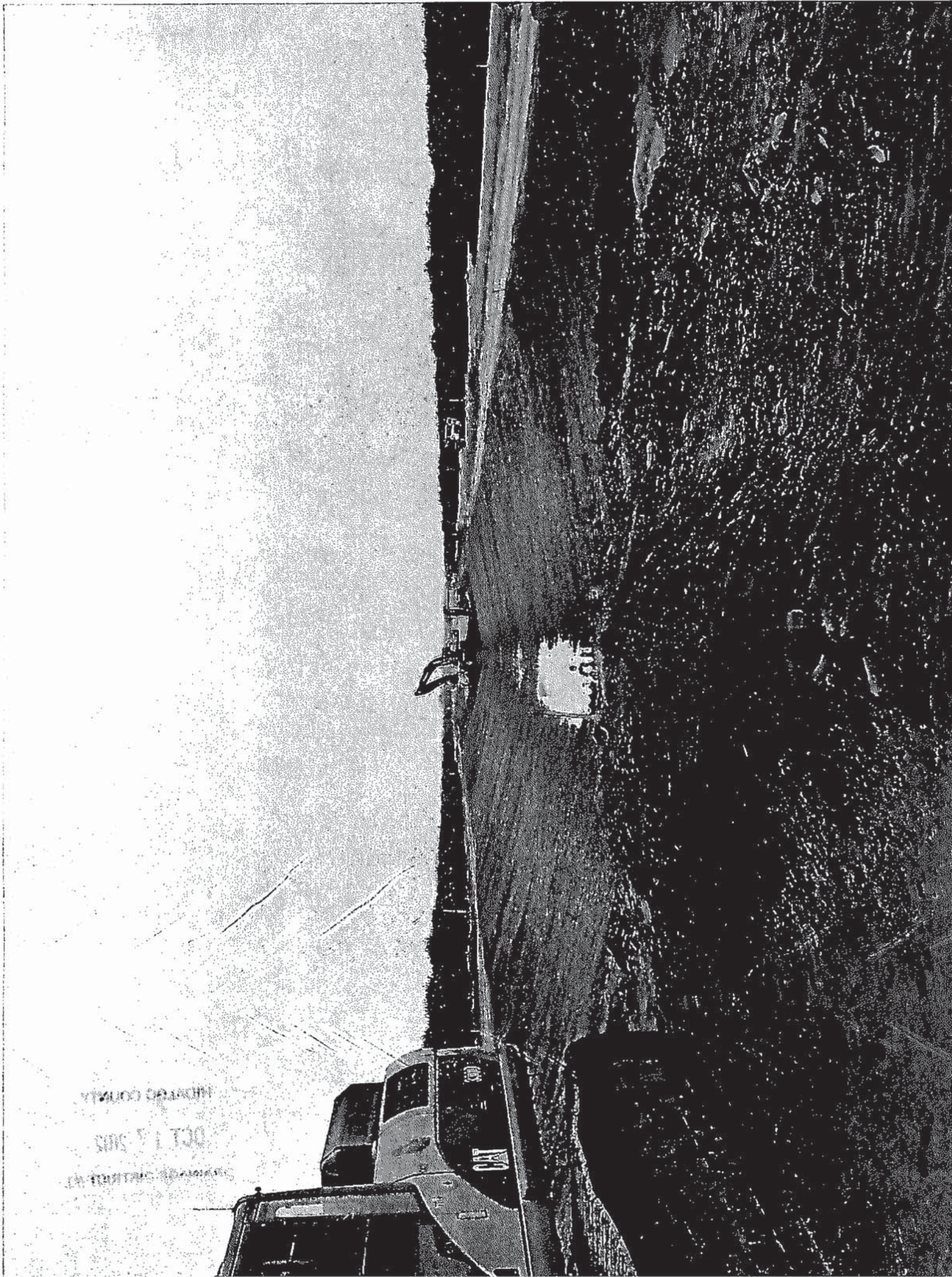
BY MICHAEL GOODMAN



HIDALGO COUNTY

OCT 17 2012

DRAINAGE DISTRICT #1



MICHIGAN COUNTY
OCT 1 1955
MICHIGAN COUNTY

HIDALGO COUNTY

OCT 17 2012

DRAINAGE DISTRICT #1



HIDALGO COUNTY

OCT 17 2012

DRAINAGE DISTRICT #1

STANCO OSGRUM

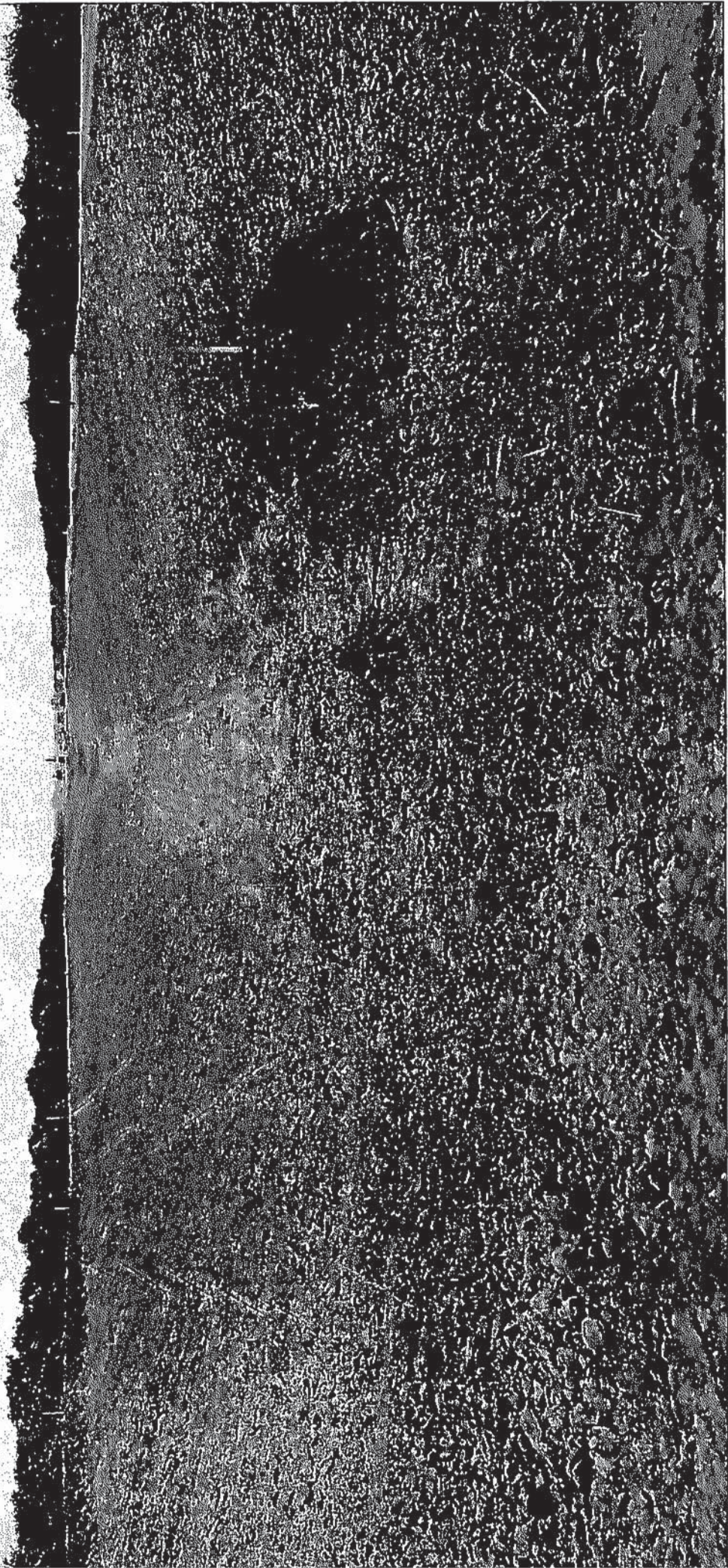
9105 1 100

100 100 100 100

HIDALGO COUNTY

OCT 1-7 2012

DRAINAGE DISTRICT #1



1992-1993

1992-1993

1992-1993

HIDALGO COUNTY

OCT 17 2012

DRAINAGE DISTRICT #1



THE UNIVERSITY OF
MICHIGAN
LIBRARY

HIDALGO COUNTY

OCT 17 2012

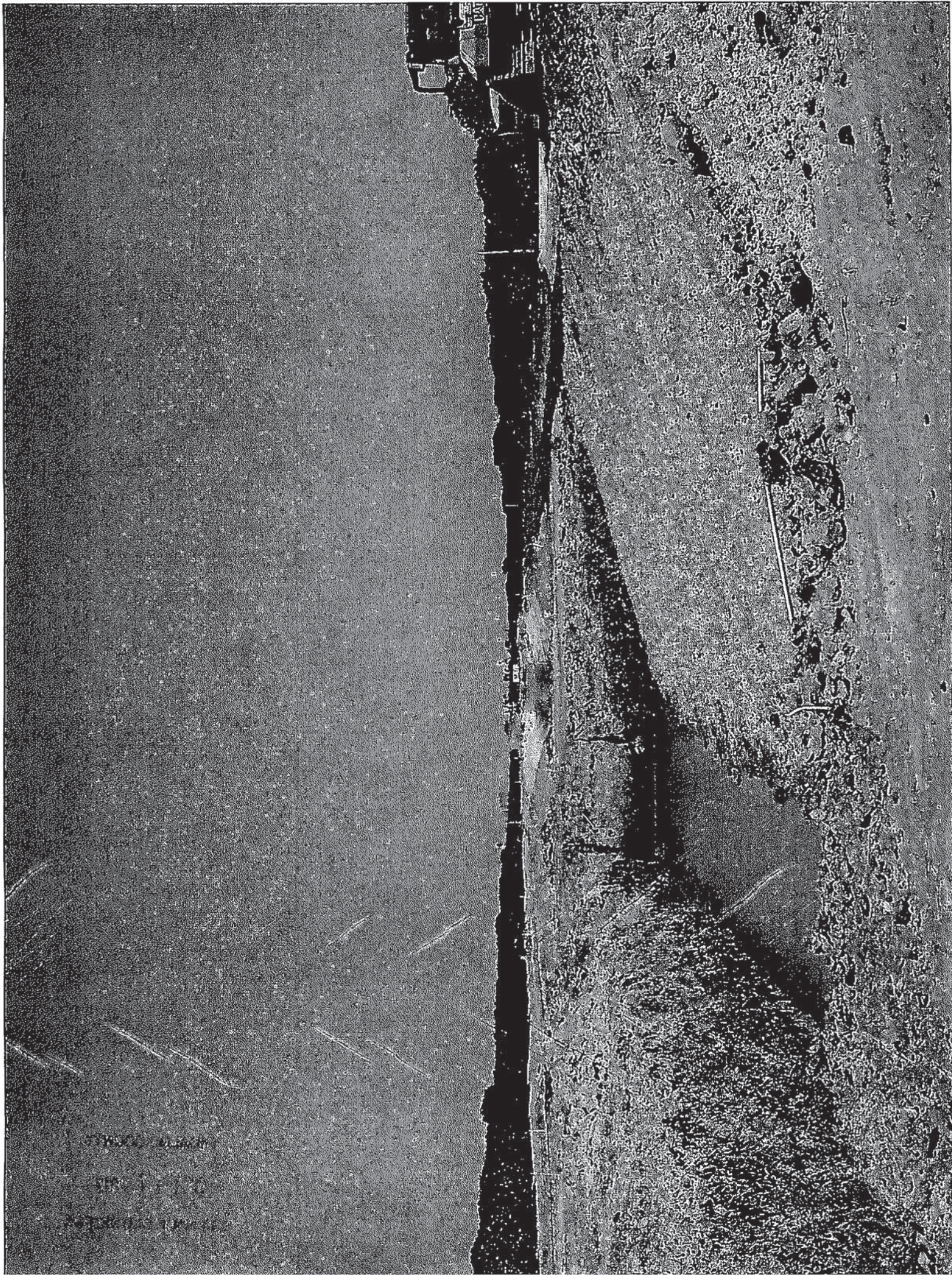
DRAINAGE DISTRICT #1



HIDALGO COUNTY

OCT 1-7 2012

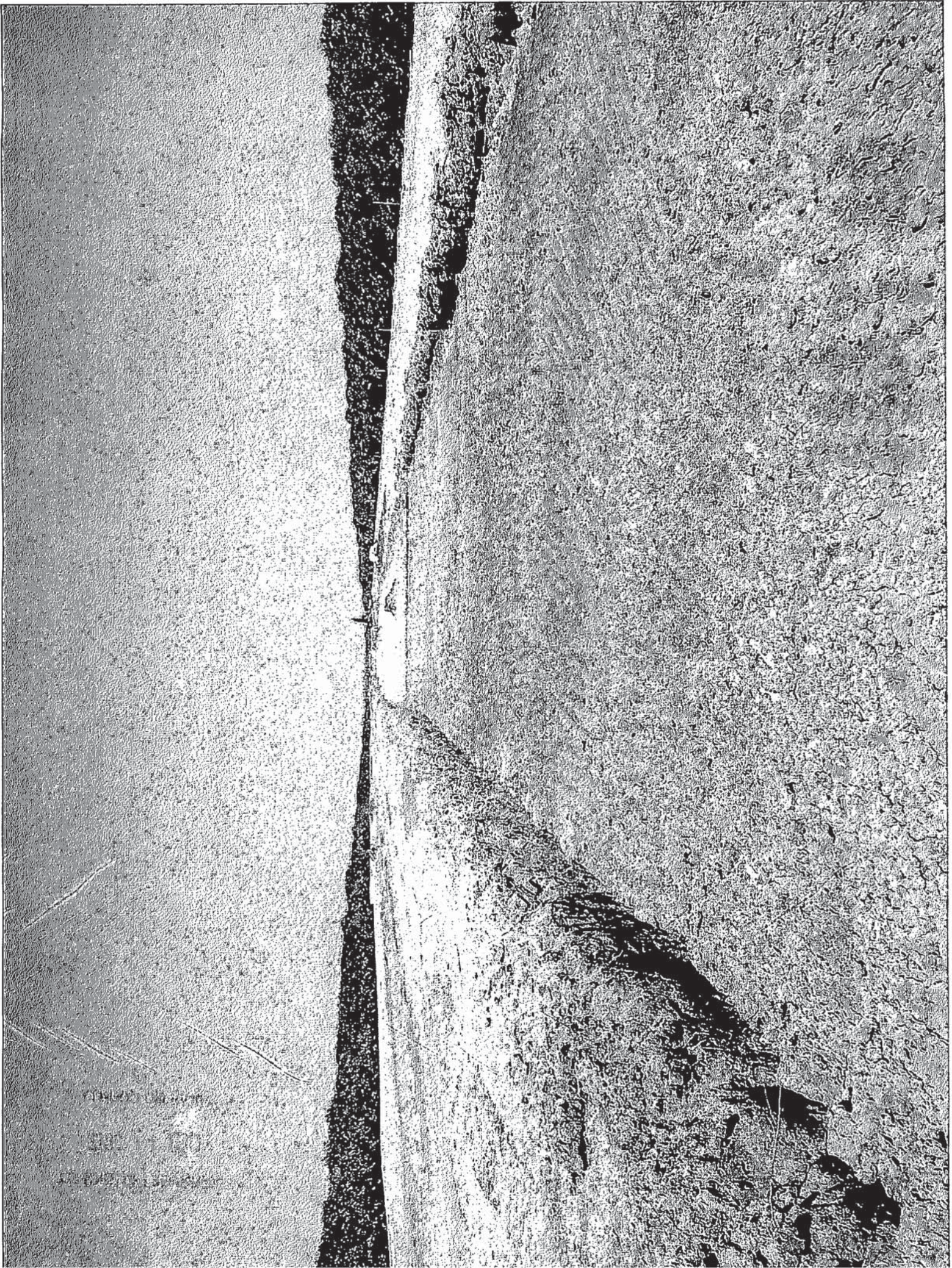
DRAINAGE DISTRICT #1



HIDALGO COUNTY

OCT 17 2012

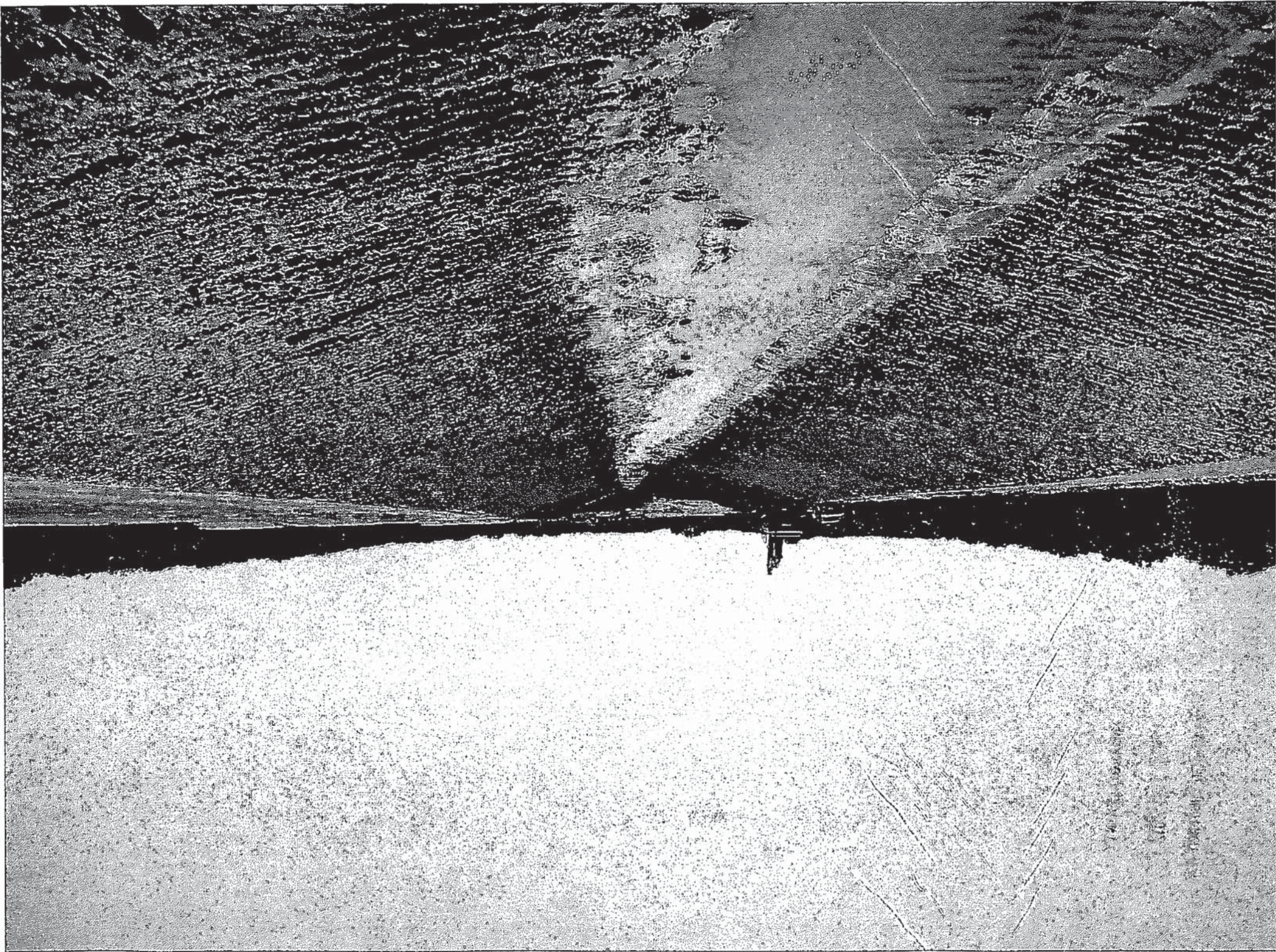
DRAINAGE DISTRICT #1



HIDALGO COUNTY

OCT 17 2012

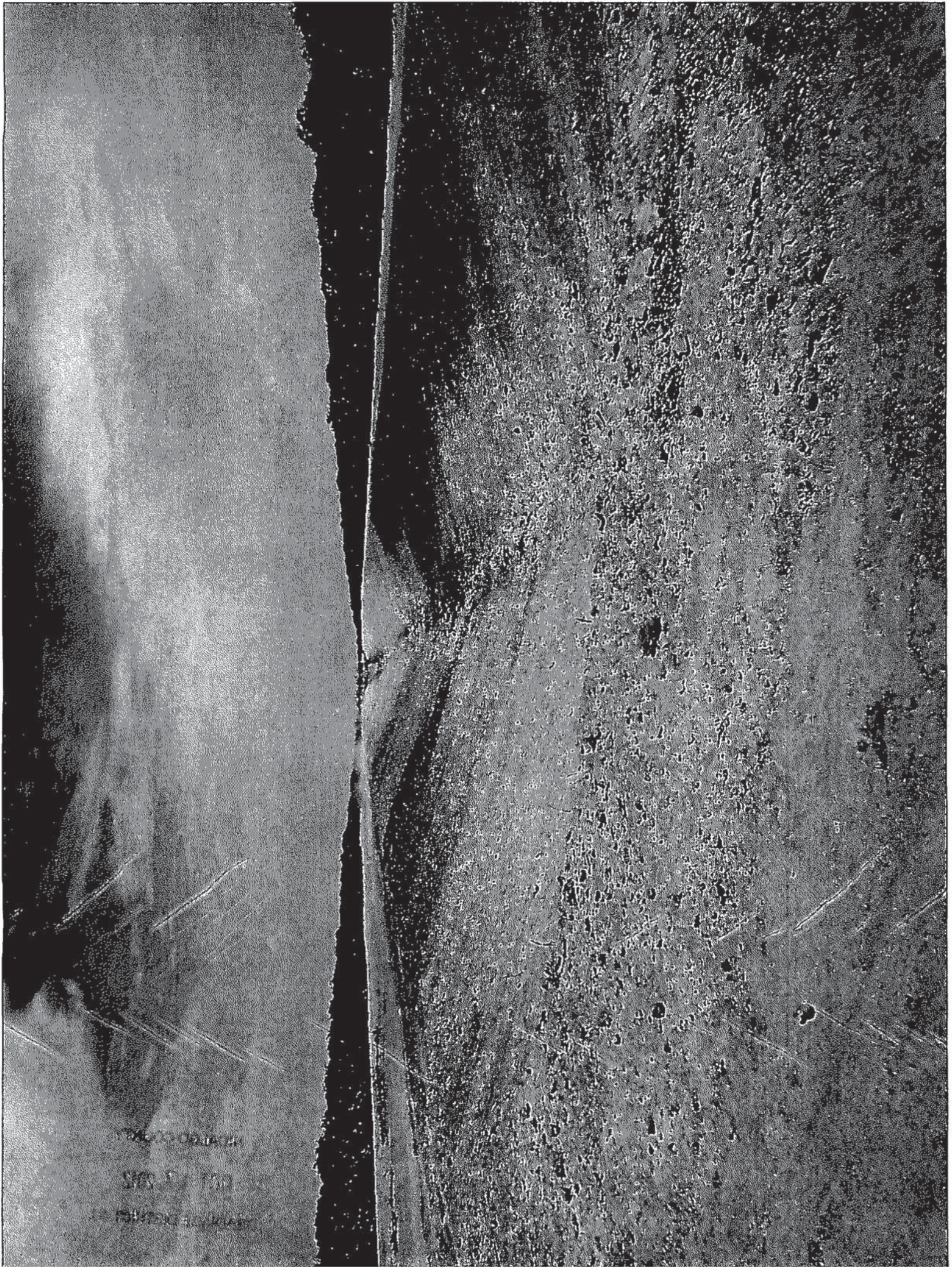
DRAINAGE DISTRICT #1



HIDALGO COUNTY

OCT 17 2012

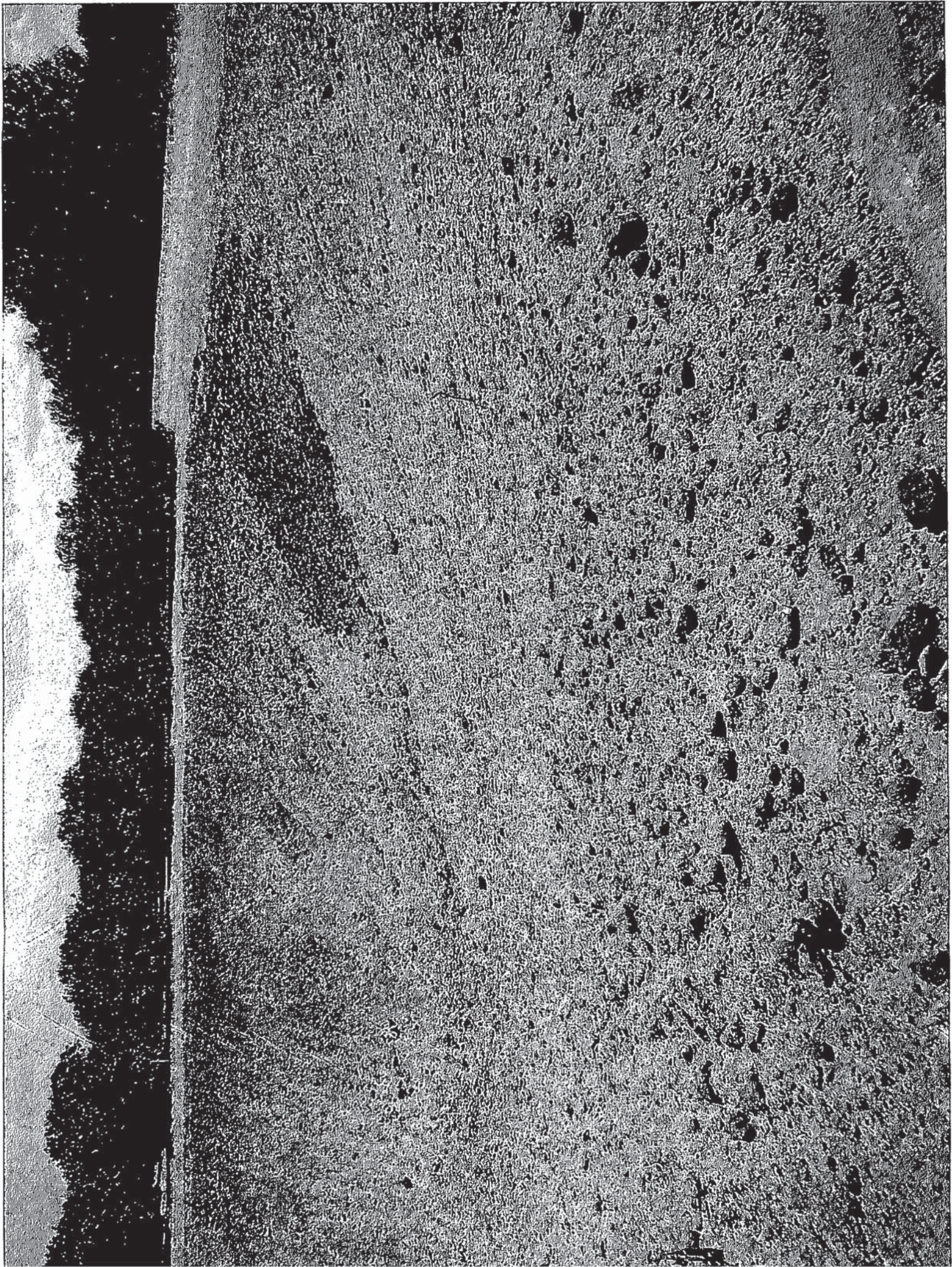
DRAINAGE DISTRICT #1



HIDALGO COUNTY

OCT 17 2012

DRAINAGE DISTRICT #1



HIDALGO COUNTY

OCT 17 2012

DRAINAGE DISTRICT #1