



Hidalgo County Head Start Program

Policy Council Consent Agenda

DATE: January 16, 2013

SUBJECT: Approval of the Learning Accomplishment Profile Diagnostic (LAP-D) Report - Mid Assessment

RATIONALE/NEED: The Learning Accomplishment Profile Diagnostic (LAP-D) is administered three (3) times during the school year. These are the mid assessment results.

RECOMMENDATION: Administration recommends approval.

COST: N/A

RELATED INFORMATION INCLUDES: Mid LAP-D Report

INITIATED BY: Nora S. Munoz, Assistant Program Director 

REVIEWED BY: Teresa Flores, Executive Director

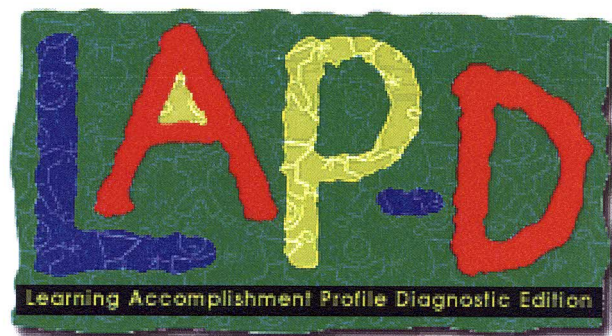
EXECUTIVE DIRECTOR'S APPROVAL: 

Head Start Outcomes Report for Hidalgo County Head Start

Based on Results From the LAP-D Assessment

Includes assessments for school year 2012 - 2013

Pre. Mid Post

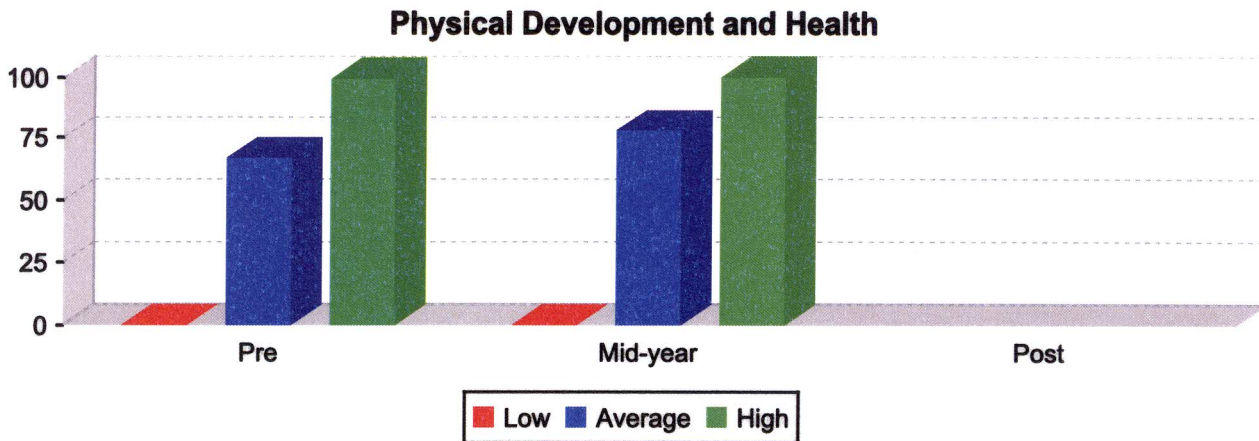


The following table summarizes the progress of children enrolled in Hidalgo County Head Start based on the Head Start Child Development and Early Learning Framework for the selected checkpoints. Each score represents the average number of milestones achieved expressed as a percentage of the total number of milestones correlated to each domain. Gains and/or losses are based on the difference between the average percentage scores at each checkpoint. Information on how the LAP-D is correlated to the Head Start Child Development and Early Learning Framework may be found in the documents section of the application.

Program Name: Hidalgo County Head Start

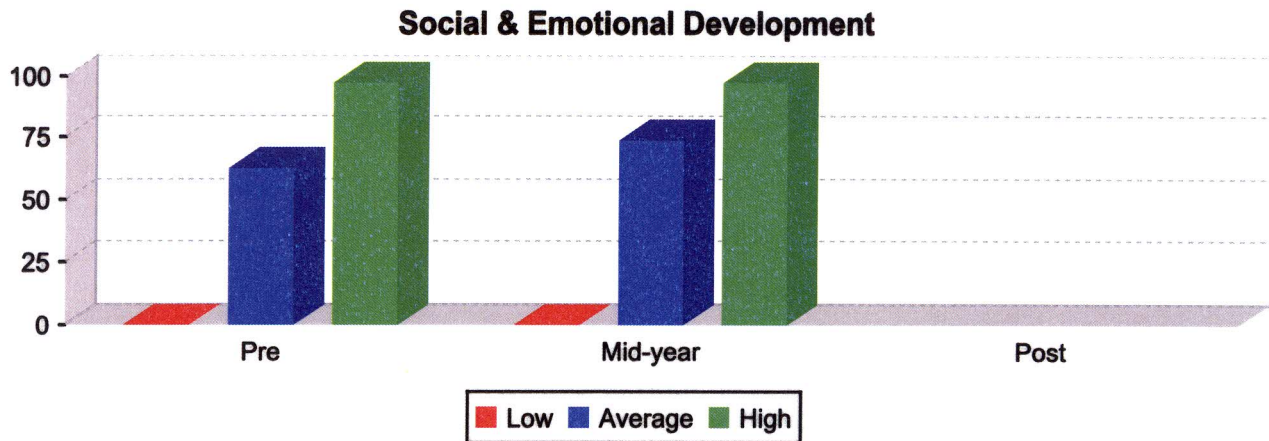
Domain	Checkpoint			Change		
	Pre	Mid-year	Post	Pre/Mid	Mid/Post	Pre/Post
Physical Health & Development	66.70	77.83		11.13		
Social & Emotional Development	62.50	73.52		11.02		
Approaches to Learning	56.52	68.86		12.34		
Logic & Reasoning	56.98	71.78		14.80		
Language Development	49.30	60.98		11.69		
Literacy Knowledge & Skills	40.69	54.36		13.67		
Mathematics Knowledge & Skills	46.85	60.12		13.27		
Science Knowledge & Skills	37.36	52.70		15.34		
Creative Arts Expression	31.68	49.13		17.45		
Social Studies Knowledge & Skills	40.68	54.39		13.71		
English Language Development	0.60	38.24		37.64		

The following graph reflects the range of scores for children enrolled in Hidalgo County Head Start based on the Head Start Child Development and Early Learning Framework. Graphs and the numbers represented by the graphs are based on highest score, lowest score and average score for all children in the program with assessment results during that checkpoint.



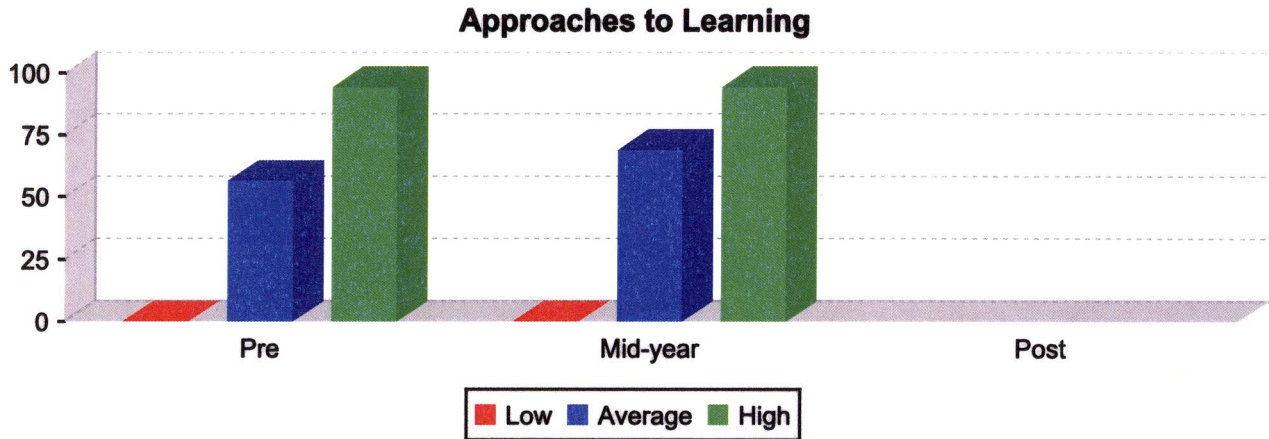
	<u>Pre</u>		<u>Mid-year</u>		<u>Post</u>
High Percentage	99.45		100.00		
Average Percentage	66.70		77.83		
Low Percentage	0.00		0.00		
Average Percentage Gain <Loss>			11.13		
Total Children in Program:	3,784	Total No. Sites:	43	Total No. Classrooms:	197
Children with Assessment data	3,754		3,597		0

The following graph reflects the range of scores for children enrolled in Hidalgo County Head Start based on the Head Start Child Development and Early Learning Framework. Graphs and the numbers represented by the graphs are based on highest score, lowest score and average score for all children in the program with assessment results during that checkpoint.



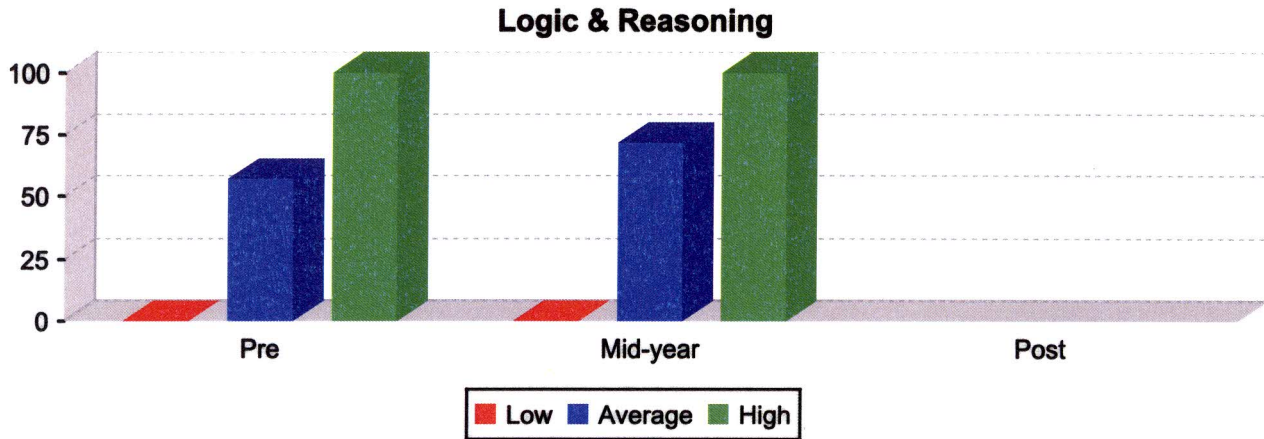
	<u>Pre</u>	<u>Mid-year</u>	<u>Post</u>
High Percentage	97.40	97.40	
Average Percentage	62.50	73.52	
Low Percentage	0.00	0.00	
Average Percentage Gain <Loss>		11.02	
Total Children in Program:	3,784	Total No. Sites: 43	Total No. Classrooms: 197
Children with Assessment data	3,754	3,597	0

The following graph reflects the range of scores for children enrolled in Hidalgo County Head Start based on the Head Start Child Development and Early Learning Framework. Graphs and the numbers represented by the graphs are based on highest score, lowest score and average score for all children in the program with assessment results during that checkpoint.



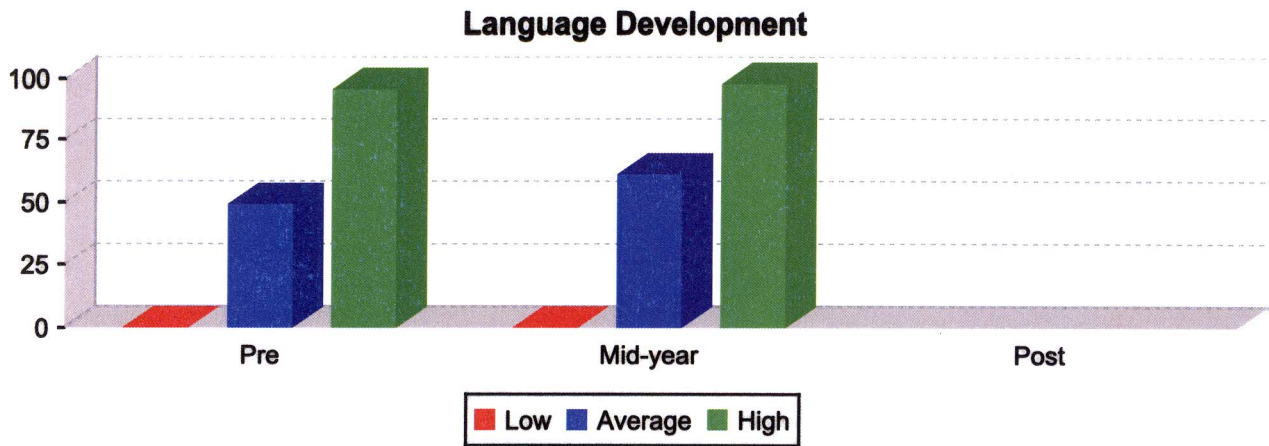
	<u>Pre</u>	<u>Mid-year</u>	<u>Post</u>
High Percentage	94.34	94.34	
Average Percentage	56.52	68.86	
Low Percentage	0.00	0.00	
Average Percentage Gain <Loss>		12.34	
Total Children in Program:	3,784	Total No. Sites: 43	Total No. Classrooms: 197
Children with Assessment data	3,754	3,597	0

The following graph reflects the range of scores for children enrolled in Hidalgo County Head Start based on the Head Start Child Development and Early Learning Framework. Graphs and the numbers represented by the graphs are based on highest score, lowest score and average score for all children in the program with assessment results during that checkpoint.



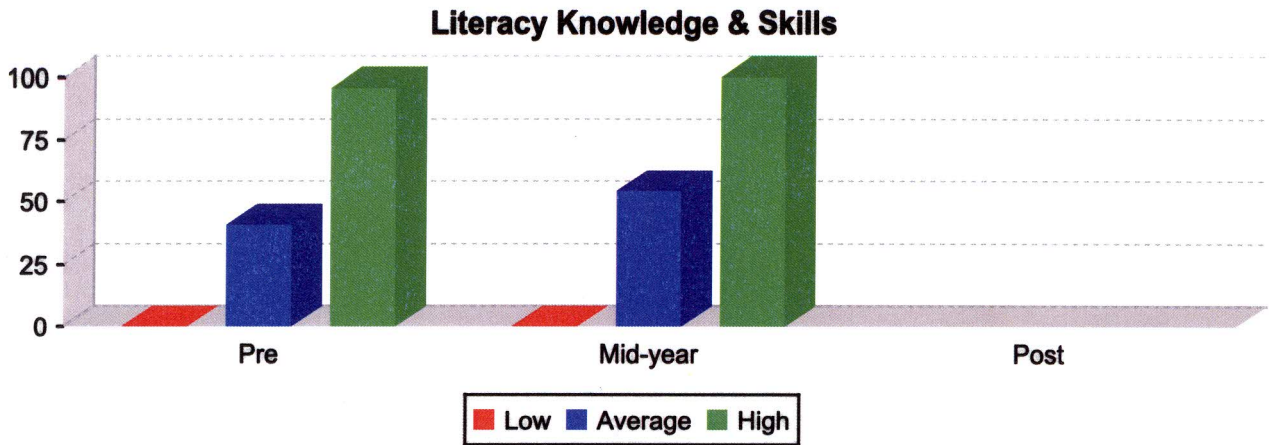
	<u>Pre</u>		<u>Mid-year</u>		<u>Post</u>
High Percentage	100.00		100.00		
Average Percentage	56.98		71.78		
Low Percentage	0.00		0.00		
Average Percentage Gain <Loss>			14.80		
Total Children in Program:	3,784	Total No. Sites:	43	Total No. Classrooms:	197
Children with Assessment data	3,754		3,597		0

The following graph reflects the range of scores for children enrolled in Hidalgo County Head Start based on the Head Start Child Development and Early Learning Framework. Graphs and the numbers represented by the graphs are based on highest score, lowest score and average score for all children in the program with assessment results during that checkpoint.



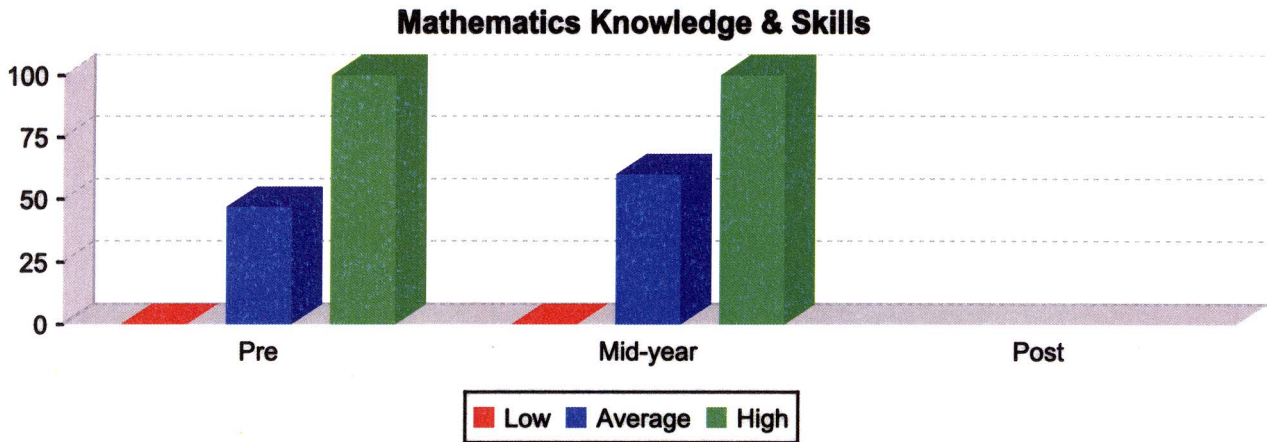
	<u>Pre</u>		<u>Mid-year</u>		<u>Post</u>
High Percentage	95.88		97.94		
Average Percentage	49.30		60.98		
Low Percentage	0.00		0.00		
Average Percentage Gain <Loss>			11.69		
Total Children in Program:	3,784	Total No. Sites:	43	Total No. Classrooms:	197
Children with Assessment data	3,754		3,597		0

The following graph reflects the range of scores for children enrolled in Hidalgo County Head Start based on the Head Start Child Development and Early Learning Framework. Graphs and the numbers represented by the graphs are based on highest score, lowest score and average score for all children in the program with assessment results during that checkpoint.



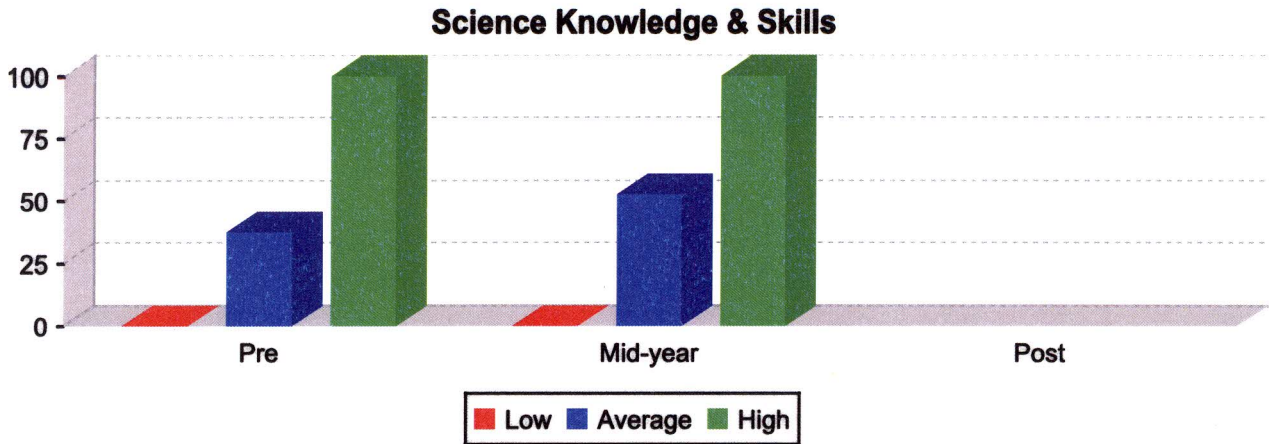
	<u>Pre</u>	<u>Mid-year</u>	<u>Post</u>
High Percentage	95.92	100.00	
Average Percentage	40.69	54.36	
Low Percentage	0.00	0.00	
Average Percentage Gain <Loss>		13.67	
Total Children in Program:	3,784	Total No. Sites: 43	Total No. Classrooms: 197
Children with Assessment data	3,754	3,597	0

The following graph reflects the range of scores for children enrolled in Hidalgo County Head Start based on the Head Start Child Development and Early Learning Framework. Graphs and the numbers represented by the graphs are based on highest score, lowest score and average score for all children in the program with assessment results during that checkpoint.



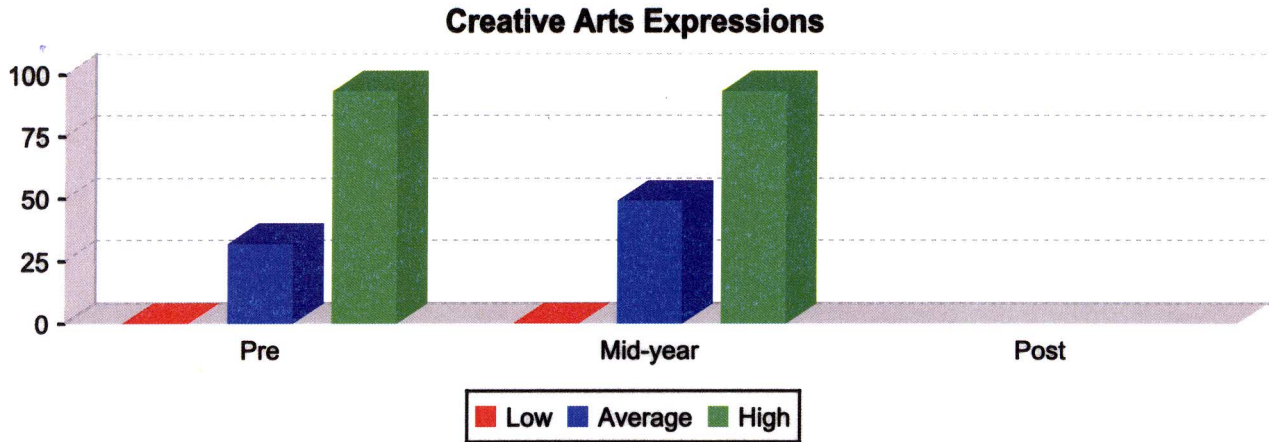
	<u>Pre</u>		<u>Mid-year</u>		<u>Post</u>
High Percentage	100.00		100.00		
Average Percentage	46.85		60.12		
Low Percentage	0.00		0.00		
Average Percentage Gain <Loss>			13.27		
Total Children in Program:	3,784	Total No. Sites:	43	Total No. Classrooms:	197
Children with Assessment data	3,754		3,597		0

The following graph reflects the range of scores for children enrolled in Hidalgo County Head Start based on the Head Start Child Development and Early Learning Framework. Graphs and the numbers represented by the graphs are based on highest score, lowest score and average score for all children in the program with assessment results during that checkpoint.



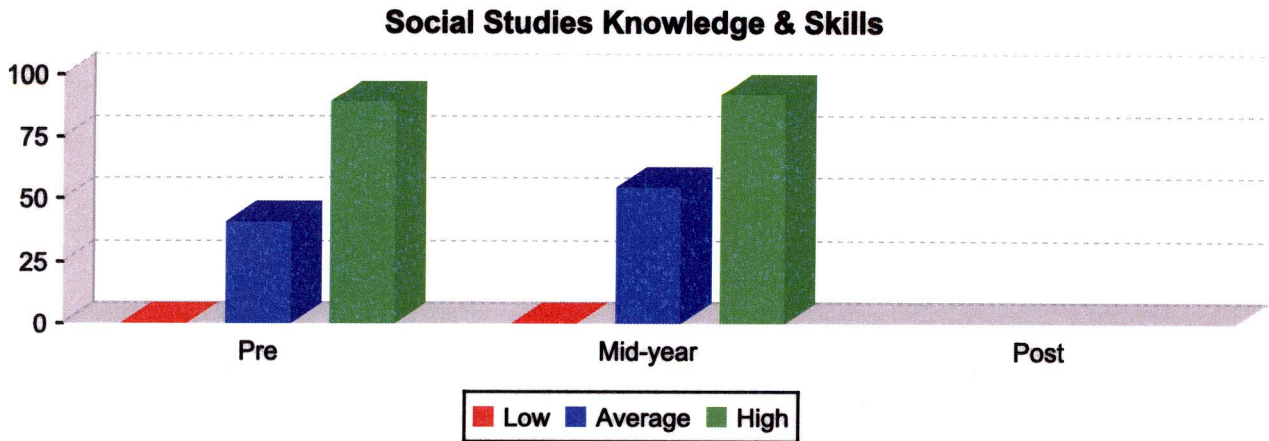
	<u>Pre</u>		<u>Mid-year</u>		<u>Post</u>
High Percentage	100.00		100.00		
Average Percentage	37.36		52.70		
Low Percentage	0.00		0.00		
Average Percentage Gain <Loss>			15.34		
Total Children in Program:	3,784	Total No. Sites:	43	Total No. Classrooms:	197
Children with Assessment data	3,754		3,597		0

The following graph reflects the range of scores for children enrolled in Hidalgo County Head Start based on the Head Start Child Development and Early Learning Framework. Graphs and the numbers represented by the graphs are based on highest score, lowest score and average score for all children in the program with assessment results during that checkpoint.



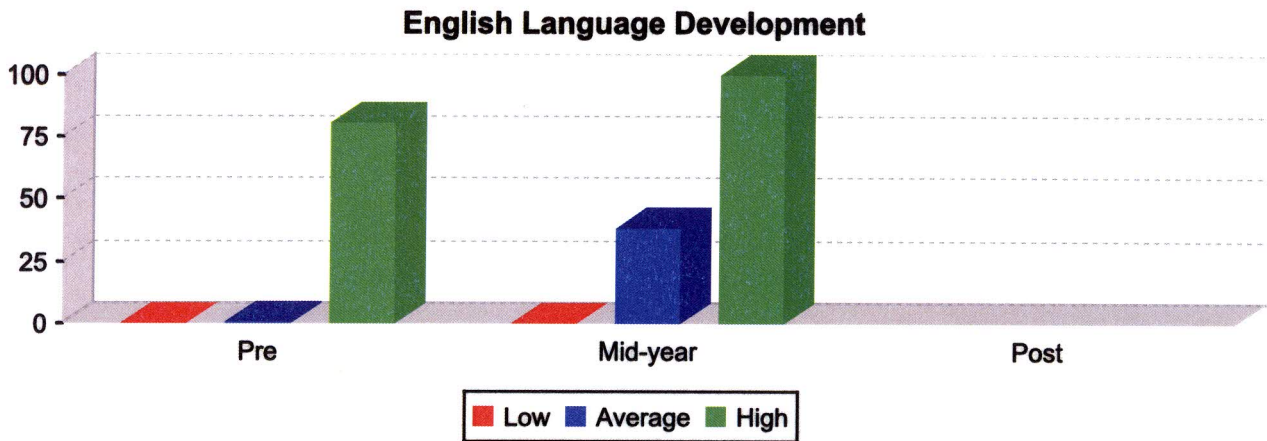
	<u>Pre</u>		<u>Mid-year</u>		<u>Post</u>
High Percentage	93.33		93.33		
Average Percentage	31.68		49.13		
Low Percentage	0.00		0.00		
Average Percentage Gain <Loss>			17.45		
Total Children in Program:	3,784	Total No. Sites:	43	Total No. Classrooms:	197
Children with Assessment data	3,754		3,597		0

The following graph reflects the range of scores for children enrolled in Hidalgo County Head Start based on the Head Start Child Development and Early Learning Framework. Graphs and the numbers represented by the graphs are based on highest score, lowest score and average score for all children in the program with assessment results during that checkpoint.



	<u>Pre</u>		<u>Mid-year</u>		<u>Post</u>
High Percentage	89.19		91.89		
Average Percentage	40.68		54.39		
Low Percentage	0.00		0.00		
Average Percentage Gain <Loss>			13.71		
Total Children in Program:	3,784	Total No. Sites:	43	Total No. Classrooms:	197
Children with Assessment data	3,754		3,597		0

The following graph reflects the range of scores for children enrolled in Hidalgo County Head Start based on the Head Start Child Development and Early Learning Framework. Graphs and the numbers represented by the graphs are based on highest score, lowest score and average score for all children in the program with assessment results during that checkpoint.



	<u>Pre</u>		<u>Mid-year</u>		<u>Post</u>
High Percentage	80.56		100.00		
Average Percentage	0.60		38.24		
Low Percentage	0.00		0.00		
Average Percentage Gain <Loss>			37.64		
Total Children in Program:	2,465	Total No. Sites:	43	Total No. Classrooms:	195
Children with Assessment data	2,443		2,415		0