



at&t

*Elsa Clinic*

HILDALGO CNTY HLTH DPT  
 ELSA CLINIC  
 1304 S 25TH AVE  
 EDINBURG TX 78542 - 7205

Page 1 of 2  
 Account Number 956 262-1141 273 7  
 Billing Date Jan 23, 2013

Web Site att.com

# Monthly Statement

INVOICE RECEIVED BY:	
<u>Jeanette Palacios</u>	DATE <u>2/1/13</u>
GOODS/SERVICES RECEIVED BY:	
<u>Palacios</u>	DATE <u>1/23-2/22/13</u>
<u>3-1100-441-00-340-003 -0-531</u>	
PYMT AMOUNTS <u>460.29</u>	PO# <u>N/A</u>
APPROVED BY: <u>[Signature]</u> <u>2/1/2013</u>	

## Bill-At-A-Glance

Previous Bill	460.71
Payment Received 1-28 Thank you!	460.71CR
Adjustments	.00
Balance	.00
Current Charges	<b>460.29</b>
<b>Total Amount Due</b>	<b>\$460.29</b>
Amount Due in Full By	Feb 15, 2013

## Plans and Services

<b>Monthly Service - Jan 23 thru Feb 22</b>		
<b>Charges for 956 262-1141</b>		
1. Monthly Charges		284.37
2. Basic Local Service - Business		20.85
Total Charges for 956 262-1141		305.22
<b>Charges for 956 262-2361</b>		
3. Monthly Charges		1.30
4. Basic Local Service - Business		20.85
Total Charges for 956 262-2361		22.15
<b>Charges for 956 262-3130</b>		
5. Monthly Charges		1.30
6. Basic Local Service - Business		20.85
Total Charges for 956 262-3130		22.15
<b>Charges for 956 262-3491</b>		
7. Monthly Charges		1.30
8. Basic Local Service - Business		20.85
Total Charges for 956 262-3491		22.15
<b>Charges for 956 262-7842</b>		
9. Monthly Charges		1.30
10. Basic Local Service - Business		20.85
Total Charges for 956 262-7842		22.15
<b>Charges for 956 262-9138</b>		
11. Monthly Charges		1.30
12. Basic Local Service - Business		20.85
Total Charges for 956 262-9138		22.15
<b>Total Monthly Service</b>		<b>415.97</b>

## Billing Summary

Billing Questions? Visit <a href="http://att.com/billing">att.com/billing</a>	Page
Plans and Services	1 460.29
1 800 770-2260	
Payment Arrangements:	
1 800 924-1743	
Service Changes:	
1 800 321-2000	
Repair Services:	
1 800 286-8313	
<b>Total Current Charges</b>	<b>460.29</b>

RECEIVED  
 Hidalgo County Health  
 & Human Services Department  
**FEB 01 2013**  
 1304 S. 25th Ave  
 Edinburg, Texas 78542

## Additions and Changes to Service

This section of your bill reflects charges and credits resulting from account activity.

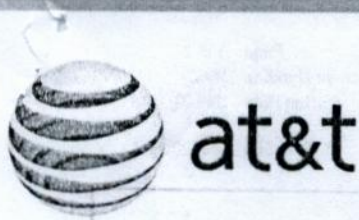
Item No.	Description	Quantity	Monthly Rate	Amount Billed
<b>Activity on Jan 1, 2013</b> (Monthly Charges are Prorated from Jan 1, 2013 through Jan 22, 2013)				
13.	Federal Universal Service Fee	1		.03CR
14.	Federal Universal Service Fee	1		.03CR
15.	Federal Universal Service Fee	1		.03CR
16.	Federal Universal Service Fee	1		.03CR
17.	Federal Universal Service Fee	1		.03CR
18.	Federal Universal Service Fee	1		.03CR
<b>Total Additions and Changes to Service</b>				<b>.18CR</b>

## News You Can Use Summary

- PREVENT DISCONNECT
  - LONG DIST. PROVIDERS
- See "News You Can Use" for additional information

Local Services provided by AT&T Arkansas, AT&T Kansas, AT&T Missouri, AT&T Oklahoma, or AT&T Texas based upon the service address location.  
 GO GREEN - Enroll in paperless billing. Printed on Recyclable Paper

Return bottom portion with your check in the enclosed envelope.



HILDALGO CNTY HLTH DPT  
 ELSA CLINIC  
 1304 S 25TH AVE  
 EDINBURG TX 78542 - 7205

Page 2 of 2  
 Account Number 956 262-1141 273 7  
 Billing Date Jan 23, 2013

INVOICE RECEIVED BY \_\_\_\_\_  
 DATE \_\_\_\_\_  
 GOODS/SERVICES RECEIVED BY \_\_\_\_\_  
 DATE \_\_\_\_\_

**Plans and Services**

**Surcharges and Other Fees**

1. Federal Subscriber Line Charge	32.94
2. 911 Fee	3.36
3. State Cost-Recovery Fee	2.26
4. Federal Universal Service Fee	5.94
<b>Total Surcharges and Other Fees</b>	<b>44.50</b>

**Taxes**

5. Federal	.00
6. State and Local	.00
<b>Total Taxes</b>	<b>.00</b>

**Total Plans and Services 460.29**

Amount Subject to Sales Tax: 2.26

**News You Can Use**

**PREVENT DISCONNECT**

Thank you for being a valued customer. Please be aware that all charges must be paid each month to keep your account current and prevent collection activities. We are required to inform you that certain charges such as your telephone line, and fees and surcharges **MUST** be paid in order to prevent interruption of basic local service. These charges are already included in the Total Amount Due and are \$456.93. Also, neglecting payment for other charges, such as long distance, voice mail, InLine®, wireless, and Internet may result in those services being interrupted.

**LONG DIST. PROVIDERS**

Our records indicate that you have selected AT&T Corp. or a company that resells their services as your primary local toll carrier and AT&T Corp. or a company that resells their services as your primary long distance carrier. Please contact us if this does not agree with your records.

**Terms and Conditions**

**CARRIER QUESTIONS**

You may contact the Public Utility Commission of Texas, Office of Customer Protection, P.O. Box 13326, Austin, TX 78711-3326, 1-512-936-7120 or toll-free in Texas at 1-888-782-8477 if you believe the local exchange provider or the interexchange carrier on your bill are not correct or if there are unauthorized charges on your bill. Hearing and speech impaired customers with text telephones (TTY) may call 1-512-936-7136. When corresponding by mail, include your complaint and copies of the phone bills. Please contact AT&T Texas to switch your service back to the carrier of your choice.

For a complete listing of Terms and Conditions, please refer to:

- The inside of the AT&T White Pages directory, or
- Visit us on the web at [att.com/terms](http://att.com/terms)





at&t

*Hidalgo*

COUNTY OF HIDALGO  
HIDALGO CLINIC  
1304 S 25TH AVE  
EDINBURG TX 78542 - 7205

*2*

Page 1 of 2  
Account Number 956 843-7463 001 7  
Billing Date Dec 29, 2012  
Web Site att.com

# Monthly Statement

### Bill-At-A-Glance

Previous Bill	412.15
Payment Received 12-22 Thank you!	412.15CR
Adjustments	.00
Balance	.00
Current Charges	412.15
<b>Total Amount Due</b>	<b>\$412.15</b>
Amount Due in Full By	Jan 24, 2013

### Plans and Services

<b>Monthly Service - Dec 29 thru Jan 28</b>	
<b>Charges for 956 843-7463</b>	
1. Monthly Charges	284.11
2. Basic Local Service - Business	20.85
<b>Total Charges for 956 843-7463</b>	<b>304.96</b>
<b>Charges for 956 843-2659</b>	
3. Monthly Charges	1.56
4. Basic Local Service - Business	20.85
<b>Total Charges for 956 843-2659</b>	<b>22.41</b>
<b>Charges for 956 843-6672</b>	
5. Monthly Charges	1.30
6. Basic Local Service - Business	20.85
<b>Total Charges for 956 843-6672</b>	<b>22.15</b>
<b>Charges for 956 843-9864</b>	
7. Monthly Charges	1.30
8. Basic Local Service - Business	20.85
<b>Total Charges for 956 843-9864</b>	<b>22.15</b>
<b>Total Monthly Service</b>	<b>371.67</b>
<b>Surcharges and Other Fees</b>	
9. Federal Subscriber Line Charge	21.96
10. 911 Fee	.56
11. Federal Universal Service Fee	4.12
12. Municipal right-of-way Fee	13.84
<b>Total Surcharges and Other Fees</b>	<b>40.48</b>
<b>Taxes</b>	
13. Federal	.00
14. State and Local	.00
<b>Total Taxes</b>	<b>.00</b>
<b>Total Plans and Services</b>	<b>412.15</b>

### Billing Summary

Billing Questions? Visit <a href="http://att.com/billing">att.com/billing</a>	Page
<b>Plans and Services</b>	1 412.15
1 800 770-2260	
Payment Arrangements:	
1 800 924-1743	
Service Changes:	
1 800 321-2000	
Repair Services:	
1 800 286-8313	
<b>Total Current Charges</b>	<b>412.15</b>

RECEIVED  
Hidalgo County  
& Hum...  
JAN 11 2013  
1304 S 25th Ave.  
Edinburg, Texas 78542

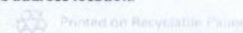
### News You Can Use Summary

- PREVENT DISCONNECT
  - RATE INCREASES
  - CHANGES IN TERMS
  - LONG DIST. PROVIDERS
  - 800/900 SERVICES
  - WALK-IN BILL PAYMENT
- See "News You Can Use" for additional information

INVOICE RECEIVED BY:  
Jeanette Palacios DATE 1/11/13  
GOODS/SERVICES RECEIVED BY:  
Palacios DATE 12/29-1/28/13  
3 -1100-441-00-340-003-0-531  
PYMT AMOUNTS 412.15 PO# N/A  
APPROVED BY: [Signature] 2/22/13

Local Services provided by AT&T Arkansas, AT&T Kansas, AT&T Missouri, AT&T Oklahoma, or AT&T Texas based upon the service address location.

GO GREEN - Enroll in paperless billing.



Return bottom portion with your check in the enclosed envelope.



COUNTY OF HIDALGO  
 HIDALGO CLINIC  
 1304 S 25TH AVE  
 EDINBURG TX 78542 - 7205

Page 2 of 2  
 Account Number 956 843-7463 001 7  
 Billing Date Dec 29, 2012

**News You Can Use**

**PREVENT DISCONNECT**

Thank you for being a valued customer. Please be aware that all charges must be paid each month to keep your account current and prevent collection activities. We are required to inform you that certain charges such as your telephone line, and fees and surcharges **MUST** be paid in order to prevent interruption of basic local service. These charges are already included in the Total Amount Due and are \$411.59. Also, neglecting payment for other charges, such as long distance, voice mail, InLine®, wireless, and Internet may result in those services being interrupted.

**LONG DIST. PROVIDERS**

Our records indicate that you have selected AT&T Corp. or a company that resells their services as your primary local toll carrier and AT&T Corp. or a company that resells their services as your primary long distance carrier. Please contact us if this does not agree with your records.

**RATE INCREASES**

Effective March 1, 2013, the monthly recurring rate for the following services will increase: Call Waiting from \$9.65 to \$10.65; Three-Way Calling from \$8.55 to \$9.45; Call Forward-Busy Line from \$4.50 to \$4.95; Call Forward-Don't Answer from \$4.50 to \$4.95; Call Forward-Busy Line/Don't Answer from \$6.05 to \$6.70; Call Forwarding from \$9.55 to \$10.55; Telebranch from \$19.00 to \$20.90; Caller ID Number from \$11.05 to \$12.20; Caller ID Name from \$10.55 to \$11.65; Call Return from \$7.55 to \$8.35; Speed Call 8 from \$14.05 to \$16.90; Privacy Manager from \$14.05 to \$16.90; and Anonymous Call Rejection from \$8.65 to \$10.40. You have the right to cancel these services without penalty. If you have any questions or wish to learn more about our money saving packages or other products and services, please call an AT&T Service Representative at the toll-free number on your bill or visit us online at [www.att.com](http://www.att.com).

**800/900 SERVICES**

Per-line or per-call blocking does not prevent transmission of your telephone number when you call a company using an 800, 888, another toll-free prefix, or a 900 number. Therefore, your number may be available to that company's service representative before your call is answered.

**CHANGES IN TERMS**

Any proposed changes in rates or terms of basic network services are published in the Texas Register ([www.sos.state.tx.us](http://www.sos.state.tx.us)) through the office of the Secretary of State. Direct notice from AT&T Texas may be obtained by leaving your name, number and address in the voice mailbox at 1.800.577.7145.

**WALK-IN BILL PAYMENT**

Effective December 1, 2012, the convenience fee charged by AT&T Authorized/Contracted Payment Agents on wireline customer payments will increase to \$2.00. This fee, which must be paid in cash, is separate from the AT&T monthly bill and is paid to the payment vendor for processing bill payment transactions. Other payment options that do not require a convenience fee include payments via automatic debit from a bank account, online payment, pay-by-phone IVR transaction, a mailed check, or payments at an AT&T Company-Owned Retail Store.

APPROVED BY  
 YB  
 PAYMENT AMOUNTS  
 1/1/13

**Terms and Conditions**

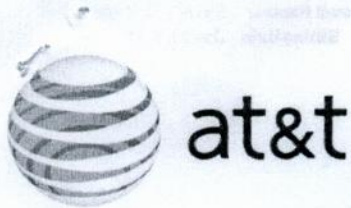
**CARRIER QUESTIONS**

You may contact the Public Utility Commission of Texas, Office of Customer Protection, P.O. Box 13326, Austin, TX 78711-3326, 1-512-936-7120 or toll-free in Texas at 1-888-782-8477 if you believe the local exchange provider or the interexchange carrier on your bill are not correct or if there are unauthorized charges on your bill. Hearing and speech impaired customers with text telephones (TTY) may call 1-512-936-7136. When corresponding by mail, include your complaint and copies of the phone bills. Please contact AT&T Texas to switch your service back to the carrier of your choice.

For a complete listing of Terms and Conditions, please refer to:

- The inside of the AT&T White Pages directory, or
- Visit us on the web at [att.com/terms](http://att.com/terms)





# Monthly Statement

COUNTY OF HIDALGO  
 HIDALGO CLINIC  
 1304 S 25TH AVE  
 EDINBURG TX 78542 - 7205

Page 1 of 2  
 Account Number 956 843-7463 001 7

Billing Date Jan 29, 2013

Web Site att.com

*Hidalgo*

INVOICE RECEIVED BY:	
<i>Seanette Palacios</i>	DATE <i>2/7/13</i>
GOODS/SERVICES RECEIVED BY:	
<i>Palacios</i>	DATE <i>1/29-2/28/13</i>
<i>3-1100-441-00-340-003-0-531</i>	
PYMT AMOUNTS <i>411.83</i>	PO# <i>688425</i>
APPROVED BY: <i>[Signature]</i>	

### Bill-At-A-Glance

Previous Bill	412.15
Payment	.00
Adjustments	.00
Past Due - Please Pay Immediately	412.15
Current Charges	<b>411.83</b>
<b>Total Amount Due</b>	<b>\$823.98</b>
Current Charges Due in Full by	Feb 21, 2013

### Plans and Services

<b>Monthly Service - Jan 29 thru Feb 28</b>		
Charges for 956 843-7463 ✓		
1. Monthly Charges		284.11
2. Basic Local Service - Business		20.85
Total Charges for 956 843-7463		304.96
Charges for 956 843-2659 ✓		
3. Monthly Charges		1.56
4. Basic Local Service - Business		20.85
Total Charges for 956 843-2659		22.41
Charges for 956 843-6672 ✓		
5. Monthly Charges		1.30
6. Basic Local Service - Business		20.85
Total Charges for 956 843-6672		22.15
Charges for 956 843-9864 ✓		
7. Monthly Charges		1.30
8. Basic Local Service - Business		20.85
Total Charges for 956 843-9864		22.15
<b>Total Monthly Service</b>		<b>371.67</b>

### Billing Summary

Billing Questions? Visit [att.com/billing](http://att.com/billing) Page

<b>Plans and Services</b>	1	411.83
1 800 770-2260		
Payment Arrangements:		
1 800 924-1743		
Service Changes:		
1 800 321-2000		
Repair Services:		
1 800 286-8313		
<b>Total Current Charges</b>		<b>411.83</b>

RECEIVED  
 Hidalgo County Health  
 & Human Services  
 FEB 07 2013  
 1304 S 25th Ave  
 Edinburg, Texas 78542

### Additions and Changes to Service

This section of your bill reflects charges and credits resulting from account activity.

Item	Quantity	Monthly Rate	Amount Billed
<b>Activity on Jan 1, 2013</b>			
(Monthly Charges are Prorated from Jan 1, 2013 through Jan 28, 2013)			
9. Federal Universal Service Fee	1		.04CR
10. Federal Universal Service Fee	1		.04CR
11. Federal Universal Service Fee	1		.04CR
12. Federal Universal Service Fee	1		.04CR
<b>Total Additions and Changes to Service</b>			<b>.16CR</b>

### Surcharges and Other Fees

13. Federal Subscriber Line Charge		21.96
14. 911 Fee		.56
15. Federal Universal Service Fee		3.96
16. Municipal right-of-way Fee		13.84
<b>Total Surcharges and Other Fees</b>		<b>40.32</b>

### Taxes

17. Federal		.00
-------------	--	-----

### News You Can Use Summary

- PREVENT DISCONNECT
  - LONG DIST. PROVIDERS
- See "News You Can Use" for additional information

Local Services provided by AT&T Arkansas, AT&T Kansas, AT&T Missouri, AT&T Oklahoma, or AT&T Texas based upon the service address location.

GO GREEN - Enroll in paperless billing.

Printed on Recycled Paper

Return bottom portion with your check in the enclosed envelope.



COUNTY OF HIDALGO  
 HIDALGO CLINIC  
 1304 S 25TH AVE  
 EDINBURG TX 78542 - 7205

Page 2 of 2  
 Account Number 956 843-7463 001 7  
 Billing Date Jan 29, 2013

INVOICE RECEIVED BY \_\_\_\_\_  
 DATE \_\_\_\_\_  
 GOODS/SERVICES RECEIVED BY \_\_\_\_\_  
 DATE \_\_\_\_\_  
 1100-441-00-340-0

**Plans and Services**

<b>Taxes - Continued</b>	
1. State and Local	.00
<b>Total Taxes</b>	<b>.00</b>

**Total Plans and Services** **411.83**

**News You Can Use**

**PREVENT DISCONNECT**  
 Thank you for being a valued customer. Please be aware that all charges must be paid each month to keep your account current and prevent collection activities. We are required to inform you that certain charges such as your telephone line, and fees and surcharges **MUST** be paid in order to prevent interruption of basic local service. These charges are already included in the Total Amount Due and are \$822.96. Also, neglecting payment for other charges, such as long distance, voice mail, InLine®, wireless, and Internet may result in those services being interrupted.

**LONG DIST. PROVIDERS**  
 Our records indicate that you have selected AT&T Corp. or a company that resells their services as your primary local toll carrier and AT&T Corp. or a company that resells their services as your primary long distance carrier. Please contact us if this does not agree with your records.

**Terms and Conditions**

**CARRIER QUESTIONS**  
 You may contact the Public Utility Commission of Texas, Office of Customer Protection, P.O. Box 13326, Austin, TX 78711-3326, 1-512-936-7120 or toll-free in Texas at 1-888-782-8477 if you believe the local exchange provider or the interexchange carrier on your bill are not correct or if there are unauthorized charges on your bill. Hearing and speech impaired customers with text telephones (TTY) may call 1-512-936-7136. When corresponding by mail, include your complaint and copies of the phone bills. Please contact AT&T Texas to switch your service back to the carrier of your choice.

For a complete listing of Terms and Conditions, please refer to:  
 - The inside of the AT&T White Pages directory, or  
 - Visit us on the web at [att.com/terms](http://att.com/terms)

© 2008 AT&T Intellectual Property. All rights reserved.



2127.016.178811.01.01.0000000 NNNNNNNY 78965.357937



# Monthly Statement

2  
McCall

HIDALGO CO HEALTH DEPT  
MCALLEN CLINIC  
1304 S 25TH AVE  
EDINBURG TX 78542 - 7205

Page 1 of 2  
Account Number 956 682-6155 728 4  
Billing Date Jan 7, 2013  
Web Site att.com

INVOICE RECEIVED BY:	Jeanette Palacios	DATE	1/10/13
GOODS/SERVICES RECEIVED BY:	Palacios	DATE	1/7-2/6/13
	3-1100-441-00-340-003-0-531		
PYMT AMOUNTS	260.24	PO#	N/A
APPROVED BY:	<i>[Signature]</i>		

## Bill-At-A-Glance

Previous Bill	260.63
Payment	.00
Adjustments	.00
Past Due - Please Pay Immediately # 373223	→ 260.63
Current Charges	260.24
<b>Total Amount Due</b>	<b>\$520.87</b>
Current Charges Due in Full by	Jan 31, 2013

## Plans and Services

<b>Monthly Service - Jan 7 thru Feb 6</b>		
<b>Charges for 956 682-6155</b> ✓		
1. Monthly Charges		1.56
2. Basic Local Service - Business		22.36
<b>Total Charges for 956 682-6155</b>		<b>23.92</b>
<b>Charges for 956 618-5979</b> ✓		
3. Monthly Charges		1.30
4. Basic Local Service - Business		20.85
<b>Total Charges for 956 618-5979</b>		<b>22.15</b>
<b>Charges for 956 630-9422</b> ✓		
5. Monthly Charges		1.30
6. Basic Local Service - Business		20.85
<b>Total Charges for 956 630-9422</b>		<b>22.15</b>
<b>Charges for 956 631-9094</b> ✓		
7. Monthly Charges		1.30
8. Basic Local Service - Business		20.85
<b>Total Charges for 956 631-9094</b>		<b>22.15</b>
<b>Charges for 956 682-6156</b> ✓		
9. Monthly Charges		1.30
10. Basic Local Service - Business		22.36
<b>Total Charges for 956 682-6156</b>		<b>23.66</b>
<b>Charges for 956 682-6157</b> ✓		
11. Monthly Charges		4.11
12. Basic Local Service - Business		22.36
<b>Total Charges for 956 682-6157</b>		<b>26.47</b>
<b>Charges for 956 682-6173</b> ✓		
13. Monthly Charges		1.30
14. Basic Local Service - Business		20.85
<b>Total Charges for 956 682-6173</b>		<b>22.15</b>
<b>Charges for 956 682-6174</b> ✓		
15. Monthly Charges		1.30
16. Basic Local Service - Business		20.85
<b>Total Charges for 956 682-6174</b>		<b>22.15</b>
<b>Total Monthly Service</b>		<b>184.80</b>

## Billing Summary

Billing Questions? Visit [att.com/billing](http://att.com/billing) Page

Plans and Services	1	260.24
1 800 770-2260		
Payment Arrangements:		
1 800 924-1743		
Service Changes:		
1 800 321-2000		
Repair Services:		
1 800 286-8313		
<b>Total Current Charges</b>		<b>260.24</b>

RECEIVED  
Hidalgo County Health  
& Human Services Department  
JAN 16 2013  
1304 S. 25th Ave  
Edinburg, Texas 78542

## News You Can Use Summary

- PREVENT DISCONNECT
  - RATE INCREASES
  - CHANGES IN TERMS
  - LONG DIST. PROVIDERS
  - 800/900 SERVICES
- See "News You Can Use" for additional information

## Additions and Changes to Service

This section of your bill reflects charges and credits resulting from account activity.

Item No.	Description	Quantity	Monthly Rate	Amount Billed
<b>Activity on Jan 1, 2013</b>				
(Monthly Charges are Prorated from Jan 1, 2013 through Jan 6, 2013)				
17.	Federal Universal Service Fee	3		.02CR

Local Services provided by AT&T Arkansas, AT&T Kansas, AT&T Missouri, AT&T Oklahoma, or AT&T Texas based upon the service address location.

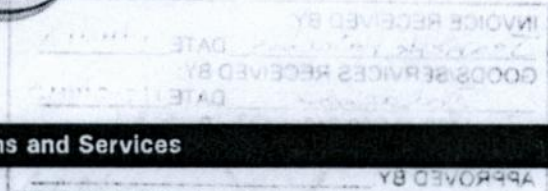
GO GREEN - Enroll in paperless billing Printed on Recyclable Paper

Return bottom portion with your check in the enclosed envelope.



HIDALGO CO HEALTH DEPT  
 MCALLEN CLINIC  
 1304 S 25TH AVE  
 EDINBURG TX 78542 - 7205

Page 2 of 2  
 Account Number 956 682-6155 728 4  
 Billing Date Jan 7, 2013



**Plans and Services**

**Additions and Changes to Service - Continued**

Item No.	Description	Quantity	Monthly Rate	Amount Billed
1.	Federal Universal Service Fee	1		.01CR
2.	Federal Universal Service Fee	1		.01CR
3.	Federal Universal Service Fee	1		.01CR
4.	Federal Universal Service Fee	1		.01CR
5.	Federal Universal Service Fee	1		.01CR
<b>Total Additions and Changes to Service</b>				<b>.07CR</b>

**Surcharges and Other Fees**

6.	Federal Subscriber Line Charge			43.92
7.	911 Fee			4.48
8.	State Cost-Recovery Fee			.39
9.	Federal Universal Service Fee			7.92
10.	Municipal right-of-way Fee			18.80
<b>Total Surcharges and Other Fees</b>				<b>75.51</b>

**Taxes**

11.	Federal			.00
12.	State and Local			.00
<b>Total Taxes</b>				<b>.00</b>

**Total Plans and Services**

260.24

Amount Subject to Sales Tax: .39

**News You Can Use**

**PREVENT DISCONNECT**

Thank you for being a valued customer. Please be aware that all charges must be paid each month to keep your account current and prevent collection activities. We are required to inform you that certain charges such as your telephone line, and fees and surcharges **MUST** be paid in order to prevent interruption of basic local service. These charges are already included in the Total Amount Due and are \$511.91. Also, neglecting payment for other charges, such as long distance, voice mail, InLine®, wireless, and Internet may result in those services being interrupted.

**LONG DIST. PROVIDERS**

Our records indicate that you have selected AT&T Corp. or a company that resells their services as your primary local toll carrier and AT&T Corp. or a company that resells their services as your primary long distance carrier. Please contact us if this does not agree with your records.

**RATE INCREASES**

Effective March 1, 2013, the monthly recurring rate for the following services will increase: Call Waiting from \$9.65 to \$10.65; Three-Way Calling from \$8.55 to \$9.45; Call Forward-Busy Line from \$4.50 to \$4.95; Call Forward-Don't Answer from \$4.50 to \$4.95; Call Forward-Busy Line/Don't Answer from \$6.05 to \$6.70; Call Forwarding from \$9.55 to \$10.55; Telebranch from \$19.00 to \$20.90; Caller ID Number from \$11.05 to \$12.20; Caller ID Name from \$10.55 to \$11.65; Call Return from \$7.55 to \$8.35; Speed Call 8 from \$14.05 to \$16.90; Privacy Manager from \$14.05 to \$16.90; and Anonymous Call Rejection from \$8.65 to \$10.40. You have the right to cancel these services without penalty. If you have any questions or wish to learn more about our money saving packages or other products and services, please call an AT&T Service Representative at the toll-free number on your bill or visit us online at [www.att.com](http://www.att.com).

**800/900 SERVICES**

Per-line or per-call blocking does not prevent transmission of your telephone number when you call a company using an 800, 888, another toll-free prefix, or a 900 number. Therefore, your number may be available to that company's service representative before your call is answered.

**CHANGES IN TERMS**

Any proposed changes in rates or terms of basic network services are published in the Texas Register ([www.sos.state.tx.us](http://www.sos.state.tx.us)) through the office of the Secretary of State. Direct notice from AT&T Texas may be obtained by leaving your name, number and address in the voice mailbox at 1.800.577.7145.

**Terms and Conditions**

**CARRIER QUESTIONS**

You may contact the Public Utility Commission of Texas, Office of Customer Protection, P.O. Box 13326, Austin, TX 78711-3326, 1-512-936-7120 or toll-free in Texas at 1-888-782-8477 if you believe the local exchange provider or the interexchange carrier on your bill are not correct or if there are unauthorized charges on your bill. Hearing and speech impaired customers with text telephones (TTY) may call 1-512-936-7136. When corresponding by mail, include your complaint and copies of the phone bills. Please contact AT&T Texas to switch your service back to the carrier of your choice.

For a complete listing of Terms and Conditions, please refer to:

- The inside of the AT&T White Pages directory, or
- Visit us on the web at [att.com/terms](http://att.com/terms)





at&amp;t

Mcalan

HIDALGO CO HEALTH DEPT  
 MCALLEN CLINIC  
 1304 S 25TH AVE  
 EDINBURG TX 78542 - 7205

Page 1 of 2  
 Account Number 956 682-6155 728 4  
 Billing Date Feb 7, 2013  
 Web Site att.com

## Monthly Statement

### Bill-At-A-Glance

Previous Bill	520.87
Payment Received 1-14	260.63CR
Adjustments	.00
Past Due - Please Pay Immediately	260.24
Current Charges	260.31
<b>Total Amount Due</b>	<b>\$520.55</b>
Current Charges Due in Full by	Mar 4, 2013

### Billing Summary

Billing Questions? Visit [att.com/billing](http://att.com/billing) Page

<b>Plans and Services</b>	1	260.31
1 800 770-2260		
Payment Arrangements:		
1 800 924-1743		
Service Changes:		
1 800 321-2000		
Repair Services:		
1 800 286-8313		
<b>Total Current Charges</b>		<b>260.31</b>

RECEIVED  
 Hidalgo County Health  
 & Human Services Department

FEB 19 2013

1304 S. 25th Ave  
 Edinburg, Texas 78542

### INVOICE RECEIVED BY:

Jeanette Palacios DATE 2/19/13

### GOODS/SERVICES RECEIVED BY:

Palacios DATE 2/7-3/6/13

3-1100-441-00-340-003-0-531

PYMT AMOUNT \$260.31 PO# 688425

### APPROVED BY:

2/20/13

### Plans and Services

#### Monthly Service - Feb 7 thru Mar 6

##### Charges for 956 682-6155

1. Monthly Charges	1.56
2. Basic Local Service - Business	22.36
<b>Total Charges for 956 682-6155</b>	<b>23.92</b>

##### Charges for 956 618-5979

3. Monthly Charges	1.30
4. Basic Local Service - Business	20.85
<b>Total Charges for 956 618-5979</b>	<b>22.15</b>

##### Charges for 956 630-9422

5. Monthly Charges	1.30
6. Basic Local Service - Business	20.85
<b>Total Charges for 956 630-9422</b>	<b>22.15</b>

##### Charges for 956 631-9094

7. Monthly Charges	1.30
8. Basic Local Service - Business	20.85
<b>Total Charges for 956 631-9094</b>	<b>22.15</b>

##### Charges for 956 682-6156

9. Monthly Charges	1.30
10. Basic Local Service - Business	22.36
<b>Total Charges for 956 682-6156</b>	<b>23.66</b>

##### Charges for 956 682-6157

11. Monthly Charges	4.11
12. Basic Local Service - Business	22.36
<b>Total Charges for 956 682-6157</b>	<b>26.47</b>

##### Charges for 956 682-6173

13. Monthly Charges	1.30
14. Basic Local Service - Business	20.85
<b>Total Charges for 956 682-6173</b>	<b>22.15</b>

##### Charges for 956 682-6174

15. Monthly Charges	1.30
16. Basic Local Service - Business	20.85
<b>Total Charges for 956 682-6174</b>	<b>22.15</b>

#### **Total Monthly Service**

184.80

#### Surcharges and Other Fees

17. Federal Subscriber Line Charge	43.92
18. 911 Fee	4.48
19. State Cost-Recovery Fee	.39
20. Federal Universal Service Fee	7.92
21. Municipal right-of-way Fee	18.80
<b>Total Surcharges and Other Fees</b>	<b>75.51</b>

### News You Can Use Summary

- PREVENT DISCONNECT
  - LONG DIST. PROVIDERS
- See "News You Can Use" for additional information

Local Services provided by AT&T Arkansas, AT&T Kansas, AT&T Missouri, AT&T Oklahoma, or AT&T Texas based upon the service address location.

GO GREEN - Enroll in paperless billing.

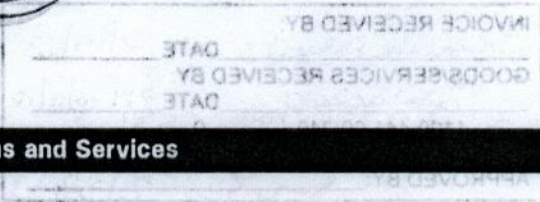
Printed on Recyclable Paper

Return bottom portion with your check in the enclosed envelope.



HIDALGO CO HEALTH DEPT  
 MCALLEN CLINIC  
 1304 S 25TH AVE  
 EDINBURG TX 78542 - 7205

Page 2 of 2  
 Account Number 956 682-6155 728 4  
 Billing Date Feb 7, 2013



**Plans and Services**

<b>Taxes</b>	
1. Federal	.00
2. State and Local	.00
<b>Total Taxes</b>	<b>.00</b>

**Total Plans and Services 260.31**

Amount Subject to Sales Tax: .39

**News You Can Use**

**PREVENT DISCONNECT**

Thank you for being a valued customer. Please be aware that all charges must be paid each month to keep your account current and prevent collection activities. We are required to inform you that certain charges such as your telephone line, and fees and surcharges **MUST** be paid in order to prevent interruption of basic local service. These charges are already included in the Total Amount Due and are \$511.59. Also, neglecting payment for other charges, such as long distance, voice mail, InLine®, wireless, and Internet may result in those services being interrupted.

**LONG DIST. PROVIDERS**

Our records indicate that you have selected AT&T Corp. or a company that resells their services as your primary local toll carrier and AT&T Corp. or a company that resells their services as your primary long distance carrier. Please contact us if this does not agree with your records.

**Terms and Conditions**

**CARRIER QUESTIONS**

You may contact the Public Utility Commission of Texas, Office of Customer Protection, P.O. Box 13326, Austin, TX 78711-3326, 1-512-936-7120 or toll-free in Texas at 1-888-782-8477 if you believe the local exchange provider or the interexchange carrier on your bill are not correct or if there are unauthorized charges on your bill. Hearing and speech impaired customers with text telephones (TTY) may call 1-512-936-7136. When corresponding by mail, include your complaint and copies of the phone bills. Please contact AT&T Texas to switch your service back to the carrier of your choice.

For a complete listing of Terms and Conditions, please refer to:

- The inside of the AT&T White Pages directory, or
- Visit us on the web at [att.com/terms](http://att.com/terms)





at&t

*Mission*

HIDALGO CNTY HLTH DEPT  
MISSION CLINIC  
1304 S 25TH AVE  
EDINBURG TX 78542 - 7205

Page 1 of 2  
Account Number 956 585-2461 751 2  
Billing Date Jan 17, 2013

Web Site att.com

# Monthly Statement

INVOICE RECEIVED BY: Jeanette Palacios DATE 1/24/13  
 GOODS/SERVICES RECEIVED BY: Palacios DATE 1/17-2/16/13  
3-1100-441-00-340-003-0-531  
 PYMT AMOUNTS 178.39 POW N/A  
 APPROVED BY: [Signature] 2/12/13

### Bill-At-A-Glance

Previous Bill	178.75
Payment Received 1-18 Thank you!	178.75CR
Adjustments	.00
Balance	.00
Current Charges	178.39
<b>Total Amount Due</b>	<b>\$178.39</b>
Amount Due in Full By	Feb 11, 2013

### Plans and Services

#### Monthly Service - Jan 17 thru Feb 16

<b>Charges for 956 585-2461</b>		
1. Monthly Charges	✓	4.37
2. Basic Local Service - Business		20.85
<b>Total Charges for 956 585-2461</b>		<b>25.22</b>
<b>Charges for 956 519-2871</b>		
3. Monthly Charges	✓	1.30
4. Basic Local Service - Business		20.85
<b>Total Charges for 956 519-2871</b>		<b>22.15</b>
<b>Charges for 956 584-7144</b>		
5. Monthly Charges	✓	1.30
6. Basic Local Service - Business		20.85
<b>Total Charges for 956 584-7144</b>		<b>22.15</b>
<b>Charges for 956 585-2742</b>		
7. Monthly Charges	✓	1.30
8. Basic Local Service - Business		20.85
<b>Total Charges for 956 585-2742</b>		<b>22.15</b>
<b>Charges for 956 585-6731</b>		
9. Monthly Charges	✓	1.30
10. Basic Local Service - Business		20.85
<b>Total Charges for 956 585-6731</b>		<b>22.15</b>
<b>Charges for 956 585-7380</b>		
11. Monthly Charges	✓	1.30
12. Basic Local Service - Business		20.85
<b>Total Charges for 956 585-7380</b>		<b>22.15</b>
<b>Total Monthly Service</b>		<b>135.97</b>

### Billing Summary

Billing Questions? Visit [att.com/billing](http://att.com/billing) Page

<b>Plans and Services</b>	1	178.39
1 800 770-2260		
<b>Payment Arrangements:</b>		
1 800 924-1743		
<b>Service Changes:</b>		
1 800 321-2000		
<b>Repair Services:</b>		
1 800 286-8313		
<b>Total Current Charges</b>		<b>178.39</b>

RECEIVED  
Hidalgo County Health  
& Human Services Department  
JAN 24 2013  
1304 S. 25th Ave  
Edinburg, Texas 78542

#### Additions and Changes to Service

This section of your bill reflects charges and credits resulting from account activity.

Item	Quantity	Monthly Rate	Amount Billed
<b>Activity on Jan 1, 2013</b>			
(Monthly Charges are Prorated from Jan 1, 2013 through Jan 16, 2013)			
13. Federal Universal Service Fee	1		.02CR
14. Federal Universal Service Fee	1		.02CR
15. Federal Universal Service Fee	1		.02CR
16. Federal Universal Service Fee	1		.02CR
17. Federal Universal Service Fee	1		.02CR
18. Federal Universal Service Fee	1		.02CR
<b>Total Additions and Changes to Service</b>			<b>.12CR</b>

### News You Can Use Summary

- PREVENT DISCONNECT
  - RATE INCREASES
  - CHANGES IN TERMS
  - LONG DIST. PROVIDERS
  - 800/900 SERVICES
- See "News You Can Use" for additional information

Local Services provided by AT&T Arkansas, AT&T Kansas, AT&T Missouri, AT&T Oklahoma, or AT&T Texas based upon the service address location.

GO GREEN - Enroll in paperless billing.

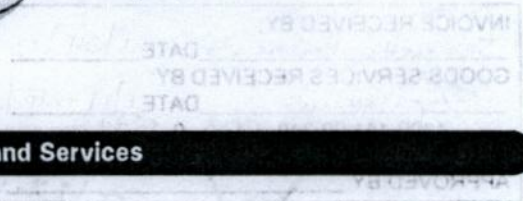
Printed on Recyclable Paper

Return bottom portion with your check in the enclosed envelope.



HIDALGO CNTY HLTH DEPT  
MISSION CLINIC  
1304 S 25TH AVE  
EDINBURG TX 78542 - 7205

Page 2 of 2  
Account Number 956 585-2461 751 2  
Billing Date Jan 17, 2013



**Plans and Services**

**Surcharges and Other Fees**

1. Federal Subscriber Line Charge	32.94
2. 911 Fee	3.36
3. State Cost-Recovery Fee	.30
4. Federal Universal Service Fee	5.94
<b>Total Surcharges and Other Fees</b>	<b>42.54</b>

**Taxes**

5. Federal	.00
6. State and Local	.00
<b>Total Taxes</b>	<b>.00</b>

**Total Plans and Services 178.39**

Amount Subject to Sales Tax: .30

**News You Can Use**

**PREVENT DISCONNECT**

Thank you for being a valued customer. Please be aware that all charges must be paid each month to keep your account current and prevent collection activities. We are required to inform you that certain charges such as your telephone line, and fees and surcharges **MUST** be paid in order to prevent interruption of basic local service. These charges are already included in the Total Amount Due and are \$175.03. Also, neglecting payment for other charges, such as long distance, voice mail, InLine®, wireless, and Internet may result in those services being interrupted.

**LONG DIST. PROVIDERS**

Our records indicate that you have selected AT&T Corp. or a company that resells their services as your primary local toll carrier and AT&T Corp. or a company that resells their services as your primary long distance carrier. Please contact us if this does not agree with your records.

**RATE INCREASES**

Effective March 1, 2013, the monthly recurring rate for the following services will increase: Call Waiting from \$9.65 to \$10.65; Three-Way Calling from \$8.55 to \$9.45; Call Forward-Busy Line from \$4.50 to \$4.95; Call Forward-Don't Answer from \$4.50 to \$4.95; Call Forward-Busy Line/Don't Answer from \$6.05 to \$6.70; Call Forwarding from \$9.55 to \$10.55; Telebranch from \$19.00 to \$20.90; Caller ID Number from \$11.05 to \$12.20; Caller ID Name from \$10.55 to \$11.65; Call Return from \$7.55 to \$8.35; Speed Call 8 from \$14.05 to \$16.90; Privacy Manager from \$14.05 to \$16.90; and Anonymous Call Rejection from \$8.65 to \$10.40. You have the right to cancel these services without penalty. If you have any questions or wish to learn more about our money saving packages or other products and services, please call an AT&T Service Representative at the toll-free number on your bill or visit us online at [www.att.com](http://www.att.com).

**800/900 SERVICES**

Per-line or per-call blocking does not prevent transmission of your telephone number when you call a company using an 800, 888, another toll-free prefix, or a 900 number. Therefore, your number may be available to that company's service representative before your call is answered.

**CHANGES IN TERMS**

Any proposed changes in rates or terms of basic network services are published in the Texas Register ([www.sos.state.tx.us](http://www.sos.state.tx.us)) through the office of the Secretary of State. Direct notice from AT&T Texas may be obtained by leaving your name, number and address in the voice mailbox at 1.800.577.7145.

**Terms and Conditions**

**CARRIER QUESTIONS**

You may contact the Public Utility Commission of Texas, Office of Customer Protection, P.O. Box 13326, Austin, TX 78711-3326, 1-512-936-7120 or toll-free in Texas at 1-888-782-8477 if you believe the local exchange provider or the interexchange carrier on your bill are not correct or if there are unauthorized charges on your bill. Hearing and speech impaired customers with text telephones (TTY) may call 1-512-936-7136. When corresponding by mail, include your complaint and copies of the phone bills. Please contact AT&T Texas to switch your service back to the carrier of your choice.

For a complete listing of Terms and Conditions, please refer to:

- The inside of the AT&T White Pages directory, or
- Visit us on the web at [att.com/terms](http://att.com/terms)





at&amp;t

Mission

## Monthly Statement

HIDALGO CNTY HLTH DEPT  
MISSION CLINIC  
1304 S 25TH AVE  
EDINBURG TX 78542 - 7205

Page 1 of 2  
Account Number 956 585-2461 751 2  
Billing Date Feb 17, 2013

Web Site att.com

INVOICE RECEIVED BY:  
Jeanette Palacios DATE 2/25/13  
GOODS/SERVICES RECEIVED BY:  
Palacios DATE 2/17-2/16/13  
3-1100-441-00-340-003-0-531  
PYMT AMOUNT \$ 178.51 PO# 688425  
APPROVED BY: [Signature] 2/28/13

## Bill-At-A-Glance

Previous Bill	178.39
Payment	.00
Adjustments	.00
Past Due - Please Pay Immediately	178.39
Current Charges	178.51
<b>Total Amount Due</b>	<b>\$356.90</b>
Current Charges Due in Full by	Mar 13, 2013

## Billing Summary

Billing Questions? Visit [att.com/billing](http://att.com/billing) Page

<b>Plans and Services</b>	1	178.51
1 800 770-2260		
Payment Arrangements:		
1 800 924-1743		
Service Changes:		
1 800 321-2000		
Repair Services:		
1 800 286-8313		
<b>Total Current Charges</b>		<b>178.51</b>

RECEIVED  
Hidalgo County Health  
& Human Services Department  
FEB 25 2013

1304 S. 25th Ave  
Edinburg, Texas 78542

## Plans and Services

## Monthly Service - Feb 17 thru Mar 16

<b>Charges for 956 585-2461</b>	
1. Monthly Charges	4.37
2. Basic Local Service - Business	20.85
<b>Total Charges for 956 585-2461</b>	<b>25.22</b>
<b>Charges for 956 519-2871</b>	
3. Monthly Charges	1.30
4. Basic Local Service - Business	20.85
<b>Total Charges for 956 519-2871</b>	<b>22.15</b>
<b>Charges for 956 584-7144</b>	
5. Monthly Charges	1.30
6. Basic Local Service - Business	20.85
<b>Total Charges for 956 584-7144</b>	<b>22.15</b>
<b>Charges for 956 585-2742</b>	
7. Monthly Charges	1.30
8. Basic Local Service - Business	20.85
<b>Total Charges for 956 585-2742</b>	<b>22.15</b>
<b>Charges for 956 585-6731</b>	
9. Monthly Charges	1.30
10. Basic Local Service - Business	20.85
<b>Total Charges for 956 585-6731</b>	<b>22.15</b>
<b>Charges for 956 585-7380</b>	
11. Monthly Charges	1.30
12. Basic Local Service - Business	20.85
<b>Total Charges for 956 585-7380</b>	<b>22.15</b>
<b>Total Monthly Service</b>	<b>135.97</b>
<b>Surcharges and Other Fees</b>	
13. Federal Subscriber Line Charge	32.94
14. 911 Fee	3.36
15. State Cost-Recovery Fee	.30
16. Federal Universal Service Fee	5.94
<b>Total Surcharges and Other Fees</b>	<b>42.54</b>
<b>Taxes</b>	
17. Federal	.00
18. State and Local	.00
<b>Total Taxes</b>	<b>.00</b>
<b>Total Plans and Services</b>	<b>178.51</b>
Amount Subject to Sales Tax: .30	

## News You Can Use Summary

- PREVENT DISCONNECT
  - LONG DIST. PROVIDERS
- See "News You Can Use" for additional information

Return bottom portion with your check in the enclosed envelope.

Local Services provided by AT&T Arkansas, AT&T Kansas, AT&T Missouri, AT&T Oklahoma, or AT&T Texas based upon the service address location.

GO GREEN - Enroll in paperless billing.

Printed on Recyclable Paper



at&t

HIDALGO CNTY HLTH DEPT  
MISSION CLINIC  
1304 S 25TH AVE  
EDINBURG TX 78542 - 7205

Page 2 of 2  
Account Number 956 585-2461 751 2  
Billing Date Feb 17, 2013

**News You Can Use**

**PREVENT DISCONNECT**

Thank you for being a valued customer. Please be aware that all charges must be paid each month to keep your account current and prevent collection activities. We are required to inform you that certain charges such as your telephone line, and fees and surcharges **MUST** be paid in order to prevent interruption of basic local service. These charges are already included in the Total Amount Due and are \$350.18. Also, neglecting payment for other charges, such as long distance, voice mail, InLine®, wireless, and Internet may result in those services being interrupted.

**LONG DIST. PROVIDERS**

Our records indicate that you have selected AT&T Corp. or a company that resells their services as your primary local toll carrier and AT&T Corp. or a company that resells their services as your primary long distance carrier. Please contact us if this does not agree with your records.

**Terms and Conditions**

**CARRIER QUESTIONS**

You may contact the Public Utility Commission of Texas, Office of Customer Protection, P.O. Box 13326, Austin, TX 78711-3326, 1-512-536-7120 or toll-free in Texas at 1-888-782-8477 if you believe the local exchange provider or the interexchange carrier on your bill are not correct or if there are unauthorized charges on your bill. Hearing and speech impaired customers with text telephones (TTY) may call 1-512-936-7136. When corresponding by mail, include your complaint and copies of the phone bills. Please contact AT&T Texas to switch your service back to the carrier of your choice.

For a complete listing of Terms and Conditions, please refer to:  
- The inside of the AT&T White Pages directory, or  
- Visit us on the web at [att.com/terms](http://att.com/terms)





at&t

*Pharr*

COUNTY OF HIDALGO  
HEALTH DEPT  
PHARR CLINIC  
1304 S 25TH AVE  
EDINBURG TX 78542 - 7205

Page 1 of 2  
Account Number 956 787-1531 073 5  
Billing Date Jan 9, 2013  
Web Site att.com

# Monthly Statement

## Bill-At-A-Glance

Previous Bill	429.26
Payment	.00
Adjustments	.00
Past Due - Please Pay Immediately	<i>pd 1/8/13</i> <i># 373224</i> → 429.26
Current Charges	<b>429.01</b>
<b>Total Amount Due</b>	<b>\$858.27</b>
Current Charges Due in Full by	Feb 1, 2013

## Plans and Services

<b>Monthly Service - Jan 9 thru Feb 8</b>		
<b>Charges for 956 787-1531</b>		
1. Monthly Charges		261.56
2. Basic Local Service - Business		22.36
Total Charges for 956 787-1531		283.92
<b>Charges for 956 702-4389</b>		
3. Monthly Charges		1.30
4. Basic Local Service - Business		20.85
Total Charges for 956 702-4389		22.15
<b>Charges for 956 781-1176</b>		
5. Monthly Charges		1.30
6. Basic Local Service - Business		20.85
Total Charges for 956 781-1176		22.15
<b>Charges for 956 783-6310</b>		
7. Monthly Charges		1.30
8. Basic Local Service - Business		20.85
Total Charges for 956 783-6310		22.15
<b>Charges for 956 787-8031</b>		
9. Monthly Charges		4.11
10. Basic Local Service - Business		22.36
Total Charges for 956 787-8031		26.47
<b>Total Monthly Service</b>		<b>376.84</b>

## Billing Summary

Billing Questions? Visit [att.com/billing](http://att.com/billing) Page

Plans and Services	1	429.01
1 800 559-7928		
Payment Arrangements:		
1 800 924-1743		
Service Changes:		
1 800 321-2000		
Repair Services:		
1 800 286-8313		
<b>Total Current Charges</b>		<b>429.01</b>

RECEIVED  
Hidalgo County Health  
& Human Services  
JAN 18 2013

**INVOICE RECEIVED BY:** Jeanette Palacios DATE 1/18/13  
**GOODS/SERVICES RECEIVED BY:** Palacios DATE 1/9-2/8/13  
 3 -1100-441-00-340-003 -0-531  
**PYMT AMOUNTS** 429.01 **PO#** N/A  
**APPROVED BY:** [Signature] 1/13

## News You Can Use Summary

- PREVENT DISCONNECT
  - RATE INCREASES
  - CHANGES IN TERMS
  - LONG DIST. PROVIDERS
  - 800/900 SERVICES
- See "News You Can Use" for additional information

## Additions and Changes to Service

This section of your bill reflects charges and credits resulting from account activity.

Item	Quantity	Monthly Rate	Amount Billed
<b>Activity on Jan 1, 2013</b> (Monthly Charges are Prorated from Jan 1, 2013 through Jan 8, 2013)			
11. Federal Universal Service Fee	2		.02CR
12. Federal Universal Service Fee	1		.01CR
13. Federal Universal Service Fee	1		.01CR
14. Federal Universal Service Fee	1		.01CR
<b>Total Additions and Changes to Service</b>			<b>.05CR</b>

## Surcharges and Other Fees

15. Federal Subscriber Line Charge			27.45
16. 911 Fee			2.80
17. State Cost-Recovery Fee			2.07
18. Federal Universal Service Fee			4.95
19. Municipal right-of-way Fee			14.95
<b>Total Surcharges and Other Fees</b>			<b>52.22</b>

Local Services provided by AT&T Arkansas, AT&T Kansas, AT&T Missouri, AT&T Oklahoma, or AT&T Texas based upon the service address location.

GO GREEN - Enroll in paperless billing.

Printed on Recyclable Paper

Return bottom portion with your check in the enclosed envelope.



COUNTY OF HIDALGO  
HEALTH DEPT  
PHARR CLINIC  
1304 S 25TH AVE  
EDINBURG TX 78542 - 7205

Page 2 of 2  
Account Number 956 787-1531 073 5  
Billing Date Jan 9, 2013

### Plans and Services

Taxes	
1. Federal	.00
2. State and Local	.00
<b>Total Taxes</b>	<b>.00</b>

**Total Plans and Services 429.01**

Amount Subject to Sales Tax: 2.07

### News You Can Use

#### PREVENT DISCONNECT

Thank you for being a valued customer. Please be aware that all charges must be paid each month to keep your account current and prevent collection activities. We are required to inform you that certain charges such as your telephone line, and fees and surcharges **MUST** be paid in order to prevent interruption of basic local service. These charges are already included in the Total Amount Due and are \$852.67. Also, neglecting payment for other charges, such as long distance, voice mail, InLine®, wireless, and Internet may result in those services being interrupted.

#### LONG DIST. PROVIDERS

Our records indicate that you have selected AT&T Corp. or a company that resells their services as your primary local toll carrier and AT&T Corp. or a company that resells their services as your primary long distance carrier. Please contact us if this does not agree with your records.

#### RATE INCREASES

Effective March 1, 2013, the monthly recurring rate for the following services will increase: Call Waiting from \$9.65 to \$10.65; Three-Way Calling from \$8.55 to \$9.45; Call Forward-Busy Line from \$4.50 to \$4.95; Call Forward-Don't Answer from \$4.50 to \$4.95; Call Forward-Busy Line/Don't Answer from \$6.05 to \$6.70; Call Forwarding from \$9.55 to \$10.55; Telebranch from \$19.00 to \$20.90; Caller ID Number from \$11.05 to \$12.20; Caller ID Name from \$10.55 to \$11.65; Call Return from \$7.55 to \$8.35; Speed Call 8 from \$14.05 to \$16.90; Privacy Manager from \$14.05 to \$16.90; and Anonymous Call Rejection from \$8.65 to \$10.40. You have the right to cancel these services without penalty. If you have any questions or wish to learn more about our money saving packages or other products and services, please call an AT&T Service Representative at the toll-free number on your bill or visit us online at [www.att.com](http://www.att.com).

#### 800/900 SERVICES

Per-line or per-call blocking does not prevent transmission of your telephone number when you call a company using an 800, 888, another toll-free prefix, or a 900 number. Therefore, your number may be available to that company's service representative before your call is answered.

#### CHANGES IN TERMS

Any proposed changes in rates or terms of basic network services are published in the Texas Register ([www.sos.state.tx.us](http://www.sos.state.tx.us)) through the office of the Secretary of State. Direct notice from AT&T Texas may be obtained by leaving your name, number and address in the voice mailbox at 1.800.577.7145.

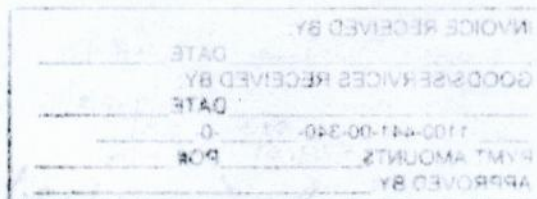
### Terms and Conditions

#### CARRIER QUESTIONS

You may contact the Public Utility Commission of Texas, Office of Customer Protection, P.O. Box 13326, Austin, TX 78711-3326, 1-512-936-7120 or toll-free in Texas at 1-888-762-8477 if you believe the local exchange provider or the interexchange carrier on your bill are not correct or if there are unauthorized charges on your bill. Hearing and speech impaired customers with text telephones (TTY) may call 1-512-936-7136. When corresponding by mail, include your complaint and copies of the phone bills. Please contact AT&T Texas to switch your service back to the carrier of your choice.

For a complete listing of Terms and Conditions, please refer to:

- The inside of the AT&T White Pages directory, or
- Visit us on the web at [att.com/terms](http://att.com/terms)





SNTXB

COUNTY OF HIDALGO  
HEALTH DEPT  
PHARR CLINIC  
1304 S 25TH AVE  
EDINBURG, TX 78542

February 19, 2013

Account Number: 956-787-1531 073 5

### Disconnection Notice

Did you forget to pay your bill? Our records show that your account is past due in the amount of \$429.01. If you have already sent your payment, we thank you and apologize for sending this notice.

If payment is not received by March 02, 2013 your AT&T Texas basic local service and any other services associated with your billing telephone number may be disconnected.

To stop disconnection of your basic local service please pay \$426.21.

To stop disconnection of your non-local services please pay \$429.01 plus any current charges that become past due.

Non-local services, which are not provided by AT&T Texas under regulated tariffs, include but are not limited to the following:

- AT&T High Speed Internet Access
- Wireless
- InLine Repair Plan
- Voicemail
- 900, 976 or 700 information services

RECEIVED  
Hidalgo County Health  
& Human Services Department

FEB 21 2013

For any other non-basic services please check your bill.

Your basic local service will not be disconnected for failure to pay the outstanding non-local charges. However, action may be taken such as disconnection or restriction of these services and referral of non-local charges to a collection agency. In the event of disconnection, reconnection fees may apply.

If your basic local service is temporarily disconnected, in addition to paying all outstanding local charges and a possible deposit or additional deposit, you will have to pay \$25.00 per line to have your service reconnected. Accounts not paid within 10 days after the interruption will be completely disconnected and a final bill issued.

If you subscribe to a package, please be advised that non-payment or partial payment of your bill may result in the removal of the non-local services, such as voicemail, etc., that are included in the package. Any non-local services that remain on the account will be billed at non-discounted rates. The local services included in the package will remain on the account and be billed at the tariffed rates, if your payment is sufficient to cover them.

You can make a payment electronically by going online to [www.att.com](http://www.att.com) or by using our Interactive Voice Response system. You may also pay at an authorized payment location. Go to [www.att.com/paylocations](http://www.att.com/paylocations) to find a payment location near you.

1304 S. 25th Ave  
Edinburg, Texas 78542

If you have questions about this notice, or if you are in need of assistance with payment of your bill, please call the AT&T Accounts Receivable Center at 1-800-924-1743. You may be eligible for alternate payment programs. If you feel that the amount due is incorrect, please contact the AT&T Customer Service Center by using the telephone number listed on your bill.

Thank you for choosing AT&T Texas. We value you as a customer and understand that sometimes circumstances may cause a delayed payment.





at&amp;t

Pharr

COUNTY OF HIDALGO  
HEALTH DEPT  
PHARR CLINIC  
1304 S 25TH AVE  
EDINBURG TX 78542 - 7205

Page 1 of 2  
Account Number 956 787-1531 073 5  
Billing Date Feb 9, 2013

Web Site att.com

## Monthly Statement

INVOICE RECEIVED BY:	Jeanette Palacios	DATE	2/10/13
GOODS/SERVICES RECEIVED BY:	Palacios	DATE	2/9-3/8/13
	3 -1100-441-00-340-003 -0-531		
PYMT AMOUNTS	429.06	PO#	688425
APPROVED BY:	[Signature]		

## Bill-At-A-Glance

Previous Bill	858.27
Payment Received 1-14	429.26CR
Adjustments	.00
Past Due - Please Pay Immediately	429.01
Current Charges	429.06
<b>Total Amount Due</b>	<b>\$858.07</b>
Current Charges Due in Full by	Mar 6, 2013

## Billing Summary

Billing Questions? Visit [att.com/billing](http://att.com/billing) Page

<b>Plans and Services</b>	1	429.06
1 800 559-7928		
Payment Arrangements:		
1 800 924-1743		
Service Changes:		
1 800 321-2000		
Repair Services:		
1 800 286-8313		
<b>Total Current Charges</b>		<b>429.06</b>

RECEIVED  
Hidalgo County Health  
& Human Services Department  
FEB 21 2013

## Plans and Services

## Monthly Service - Feb 9 thru Mar 8

## Charges for 956 787-1531

1. Monthly Charges	261.56
2. Basic Local Service - Business	22.36
<b>Total Charges for 956 787-1531</b>	<b>283.92</b>

## Charges for 956 702-4389

3. Monthly Charges	1.30
4. Basic Local Service - Business	20.85
<b>Total Charges for 956 702-4389</b>	<b>22.15</b>

## Charges for 956 781-1176

5. Monthly Charges	1.30
6. Basic Local Service - Business	20.85
<b>Total Charges for 956 781-1176</b>	<b>22.15</b>

## Charges for 956 783-6310

7. Monthly Charges	1.30
8. Basic Local Service - Business	20.85
<b>Total Charges for 956 783-6310</b>	<b>22.15</b>

## Charges for 956 787-8031

9. Monthly Charges	4.11
10. Basic Local Service - Business	22.36
<b>Total Charges for 956 787-8031</b>	<b>26.47</b>
<b>Total Monthly Service</b>	<b>376.84</b>

## Surcharges and Other Fees

11. Federal Subscriber Line Charge	27.45
12. 911 Fee	2.80
13. State Cost-Recovery Fee	2.07
14. Federal Universal Service Fee	4.95
15. Municipal right-of-way Fee	14.95
<b>Total Surcharges and Other Fees</b>	<b>52.22</b>

## Taxes

16. Federal	.00
17. State and Local	.00
<b>Total Taxes</b>	<b>.00</b>

## Total Plans and Services

429.06

Amount Subject to Sales Tax: 2.07

## News You Can Use Summary

- PREVENT DISCONNECT
- CONTRACT EXPIRATION
- LONG DIST. PROVIDERS

See "News You Can Use" for additional information

Local Services provided by AT&T Arkansas, AT&T Kansas, AT&T Missouri, AT&T Oklahoma, or AT&T Texas based upon the service address location.

GO GREEN - Enroll in paperless billing.

Printed on Recyclable Paper

Return bottom portion with your check in the enclosed envelope.



at&t

COUNTY OF HIDALGO  
HEALTH DEPT  
PHARR CLINIC  
1304 S 25TH AVE  
EDINBURG TX 78542 - 7205

Page 2 of 2  
Account Number 956 787-1531 073 5  
Billing Date Feb 9, 2013

INVOICE RECEIVED BY	
DATE	
GOODS/SERVICES RECEIVED BY	
DATE	
1-800-447-00-340	

**News You Can Use**

**PREVENT DISCONNECT**

Thank you for being a valued customer. Please be aware that all charges must be paid each month to keep your account current and prevent collection activities. We are required to inform you that certain charges such as your telephone line, and fees and surcharges **MUST** be paid in order to prevent interruption of basic local service. These charges are already included in the Total Amount Due and are \$852.47. Also, neglecting payment for other charges, such as long distance, voice mail, InLine®, wireless, and Internet may result in those services being interrupted.

**LONG DIST. PROVIDERS**

Our records indicate that you have selected AT&T Corp. or a company that resells their services as your primary local toll carrier and AT&T Corp. or a company that resells their services as your primary long distance carrier. Please contact us if this does not agree with your records.

**CONTRACT EXPIRATION**

Because the term of your DS1 Private Line Service contract has expired, the rates currently billed for your DS1 Private Line Service are increasing to the current month-to-month rates reflected in the applicable tariff, to be effective within your next two bill cycles. You have the right to cancel this service without penalty. Please contact an AT&T Service Representative at the number listed on this statement for details.

**Terms and Conditions**

**CARRIER QUESTIONS**

You may contact the Public Utility Commission of Texas, Office of Customer Protection, P.O. Box 13326, Austin, TX 78711-3326, 1-512-936-7120 or toll-free in Texas at 1-888-782-8477 if you believe the local exchange provider or the interexchange carrier on your bill are not correct or if there are unauthorized charges on your bill. Hearing and speech impaired customers with text telephones (TTY) may call 1-512-936-7136. When corresponding by mail, include your complaint and copies of the phone bills. Please contact AT&T Texas to switch your service back to the carrier of your choice.

For a complete listing of Terms and Conditions, please refer to:

- The inside of the AT&T White Pages directory, or
- Visit us on the web at [att.com/terms](http://att.com/terms)



HDLGO CTY HLTH DEPT  
1304 S 25TH AVE  
EDINBURG TX 78542 - 7205

Page 1 of 2  
Account Number 956 383-0111 942 9  
Billing Date Jan 19, 2013  
Web Site att.com



at&t

*Environmental*

INVOICE RECEIVED BY: Seanette Palacios DATE 1/28/13  
 GOODS/SERVICES RECEIVED BY: Palacios DATE 1/19-2/18/13  
3-1100-441-00-340-003 -0-531  
 PYMT AMOUNTS 97.03 PO# N/A  
 APPROVED BY: [Signature] 2/22/13

# Monthly Statement

### Bill-At-A-Glance

Previous Bill	196.43
Payment Received 12-22	99.21CR
Adjustments	.00
Past Due - Please Pay Immediately <sup>pt 1/22/13</sup> #373810 →	97.22
Current Charges	97.03
<b>Total Amount Due</b>	<b>\$194.25</b>
Current Charges Due in Full by	Feb 13, 2013

### Plans and Services

**Monthly Service - Jan 19 thru Feb 18**

Charges for 956 383-0111

1. Monthly Charges	1.30
2. Basic Local Service - Business	22.36
<b>Total Charges for 956 383-0111</b>	<b>23.66</b>

Charges for 956 383-0112

3. Monthly Charges	1.30
4. Basic Local Service - Business	22.36
<b>Total Charges for 956 383-0112</b>	<b>23.66</b>

Charges for 956 383-7351

5. Monthly Charges	1.30
6. Basic Local Service - Business	20.85
<b>Total Charges for 956 383-7351</b>	<b>22.15</b>
<b>Total Monthly Service</b>	<b>69.47</b>

### Billing Summary

Billing Questions? Visit [att.com/billing](http://att.com/billing) Page

<b>Plans and Services</b>	1	97.03
1 800 770-2260		
Payment Arrangements:		
1 800 924-1743		
Service Changes:		
1 800 321-2000		
Repair Services:		
1 800 286-8313		
<b>Total Current Charges</b>		<b>97.03</b>

RECEIVED  
Hidalgo County Health  
& Human Services Department  
JAN 28 2013  
1304 S. 25th Ave.  
Edinburg, Texas 78542

### Additions and Changes to Service

This section of your bill reflects charges and credits resulting from account activity.

Item	Quantity	Monthly Rate	Amount Billed
<b>Activity on Jan 1, 2013</b> (Monthly Charges are Prorated from Jan 1, 2013 through Jan 18, 2013)			
7. Federal Universal Service Fee	2		.05CR
8. Federal Universal Service Fee	1		.02CR
<b>Total Additions and Changes to Service</b>			<b>.07CR</b>

### Surcharges and Other Fees

9. Federal Subscriber Line Charge		16.47
10. 911 Fee		1.68
11. State Cost-Recovery Fee		.15
12. Federal Universal Service Fee		2.97
13. Municipal right-of-way Fee		6.36
<b>Total Surcharges and Other Fees</b>		<b>27.63</b>

### Taxes

14. Federal	.00
15. State and Local	.00
<b>Total Taxes</b>	<b>.00</b>

### Total Plans and Services

Amount Subject to Sales Tax: .15

97.03

### News You Can Use Summary

- PREVENT DISCONNECT
  - LONG DIST. PROVIDERS
  - 800/900 SERVICES
- See "News You Can Use" for additional information

Return bottom portion with your check in the enclosed envelope.

Local Services provided by AT&T Arkansas, AT&T Kansas, AT&T Missouri, AT&T Oklahoma, or AT&T Texas based upon the service address location.

GO GREEN - Enroll in paperless billing.

Printed on Recyclable Paper



HDLGO CTY HLTH DEPT  
1304 S 25TH AVE  
EDINBURG TX 78542 - 7205

Page 2 of 2  
Account Number 956 383-0111 942 9  
Billing Date Jan 19, 2013

INVOICE RECEIVED BY \_\_\_\_\_  
DATE \_\_\_\_\_  
GOODS SERVICES RECEIVED BY \_\_\_\_\_  
DATE \_\_\_\_\_  
1100 447 00 340 13 0

**News You Can Use**

**PREVENT DISCONNECT**

Thank you for being a valued customer. Please be aware that all charges must be paid each month to keep your account current and prevent collection activities. We are required to inform you that certain charges such as your telephone line, and fees and surcharges **MUST** be paid in order to prevent interruption of basic local service. These charges are already included in the Total Amount Due and are \$190.89. Also, neglecting payment for other charges, such as long distance, voice mail, InLine®, wireless, and Internet may result in those services being interrupted.

**LONG DIST. PROVIDERS**

Our records indicate that you have selected AT&T Corp. or a company that resells their services as your primary local toll carrier and AT&T Corp. or a company that resells their services as your primary long distance carrier. Please contact us if this does not agree with your records.

**800/900 SERVICES**

Per-line or per-call blocking does not prevent transmission of your telephone number when you call a company using an 800, 888, another toll-free prefix, or a 900 number. Therefore, your number may be available to that company's service representative before your call is answered.

**Terms and Conditions**

**CARRIER QUESTIONS**

You may contact the Public Utility Commission of Texas, Office of Customer Protection, P.O. Box 13326, Austin, TX 78711-3326, 1-512-936-7120 or toll-free in Texas at 1-888-782-8477 if you believe the local exchange provider or the interexchange carrier on your bill are not correct or if there are unauthorized charges on your bill. Hearing and speech impaired customers with text telephones (TTY) may call 1-512-936-7136. When corresponding by mail, include your complaint and copies of the phone bills. Please contact AT&T Texas to switch your service back to the carrier of your choice.

For a complete listing of Terms and Conditions, please refer to:

- The inside of the AT&T White Pages directory, or
- Visit us on the web at [att.com/terms](http://att.com/terms)





at&amp;t

## Monthly Statement

HIDALGO COUNTY  
PULMONARY CLINIC  
1304 S 25TH AVE  
EDINBURG TX 78542 - 7205

Page 1 of 2  
Account Number 956 387-0118 710 9  
Billing Date Jan 15, 2013  
Web Site att.com

INVOICE RECEIVED BY:	Jeanette Palacios	DATE	1/24/13
GOODS/SERVICES RECEIVED BY:	Palacios	DATE	1/15-2/14/13
	3-1100-441-00-340-003	-0-531	
PYMT AMOUNTS	135.77	PO#	N/A
APPROVED BY:	[Signature] 2/22/13		

## Bill-At-A-Glance

Previous Bill	135.89
Payment	.00
Adjustments	.00
Past Due - Please Pay Immediately	# 378503 → 135.89
Current Charges	135.77
<b>Total Amount Due</b>	<b>\$271.66</b>
Current Charges Due in Full by	Feb 7, 2013

## Billing Summary

Billing Questions? Visit <a href="http://att.com/billing">att.com/billing</a>	Page
<b>Plans and Services</b>	1 135.77
1 800 770-2260	
Payment Arrangements:	
1 800 924-1743	
Service Changes:	
1 800 321-2000	
Repair Services:	
1 800 286-8313	
<b>Total Current Charges</b>	<b>135.77</b>

RECEIVED  
Hidalgo County Health  
& Human Services Department  
JAN 24 2013  
1304 S 25th Ave  
Edinburg, Texas 78542

## Plans and Services

<b>Monthly Service - Jan 15 thru Feb 14</b>	
<b>Charges for 956 387-0118</b>	
1. Monthly Charges	58.30
<b>Charges for 956 387-0120</b>	
2. Monthly Charges	58.30
<b>Total Monthly Service</b>	<b>116.60</b>

## Additions and Changes to Service

This section of your bill reflects charges and credits resulting from account activity.

Item No.	Description	Quantity	Monthly Rate	Amount Billed
<b>Activity on Jan 1, 2013</b> (Monthly Charges are Prorated from Jan 1, 2013 through Jan 14, 2013)				
3.	Federal Universal Service Fee	2		.04CR

## Surcharges and Other Fees

4.	Federal Subscriber Line Charge			10.98
5.	911 Fee			1.12
6.	State Cost-Recovery Fee			.89
7.	Federal Universal Service Fee			1.98
8.	Municipal right-of-way Fee			4.24
<b>Total Surcharges and Other Fees</b>				<b>19.21</b>

## Taxes

9.	Federal			.00
10.	State and Local			.00
<b>Total Taxes</b>				<b>.00</b>

## Total Plans and Services

135.77

Amount Subject to Sales Tax: .89

## News You Can Use Summary

- PREVENT DISCONNECT
- 800/900 SERVICES
- LONG DIST. PROVIDERS
- CHANGES IN TERMS

See "News You Can Use" for additional information

## News You Can Use

## PREVENT DISCONNECT

Thank you for being a valued customer. Please be aware that all charges must be paid each month to keep your account current and prevent collection activities. We are required to inform you that certain charges such as your telephone line, and fees and surcharges MUST be paid in order to prevent interruption of basic local service. These charges are already included in the Total Amount Due and are \$269.42. Also, neglecting payment for other charges, such as long distance, voice mail, InLine®, wireless, and Internet may result in those services being interrupted.

Local Services provided by AT&T Arkansas, AT&T Kansas, AT&T Missouri, AT&T Oklahoma, or AT&T Texas based upon the service address location.

GO GREEN - Enroll in paperless billing.

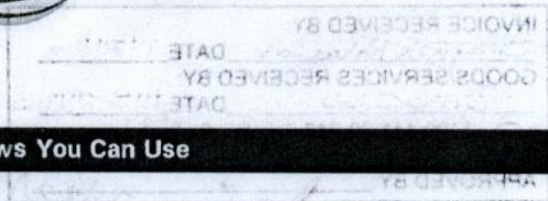
Printed on Recycled Paper

Return bottom portion with your check in the enclosed envelope.



HIDALGO COUNTY  
PULMONARY CLINIC  
1304 S 25TH AVE  
EDINBURG TX 78542 - 7205

Page 2 of 2  
Account Number 956 387-0118 710 9  
Billing Date Jan 15, 2013



### News You Can Use

#### LONG DIST. PROVIDERS

Our records indicate that you have selected MCI or a company that resells their services as your primary local toll carrier and MCI or a company that resells their services as your primary long distance carrier. Please contact us if this does not agree with your records.

#### 800/900 SERVICES

Per-line or per-call blocking does not prevent transmission of your telephone number when you call a company using an 800, 888, another toll-free prefix, or a 900 number. Therefore, your number may be available to that company's service representative before your call is answered.

#### CHANGES IN TERMS

Any proposed changes in rates or terms of basic network services are published in the Texas Register ([www.sos.state.tx.us](http://www.sos.state.tx.us)) through the office of the Secretary of State. Direct notice from AT&T Texas may be obtained by leaving your name, number and address in the voice mailbox at 1.800.577.7145.

### Terms and Conditions

#### CARRIER QUESTIONS

You may contact the Public Utility Commission of Texas, Office of Customer Protection, P.O. Box 13326, Austin, TX 78711-3326, 1-512-936-7120 or toll-free in Texas at 1-888-782-8477 if you believe the local exchange provider or the interexchange carrier on your bill are not correct or if there are unauthorized charges on your bill. Hearing and speech impaired customers with text telephones (TTY) may call 1-512-936-7136. When corresponding by mail, include your complaint and copies of the phone bills. Please contact AT&T Texas to switch your service back to the carrier of your choice.

For a complete listing of Terms and Conditions, please refer to:

- The inside of the AT&T White Pages directory, or
- Visit us on the web at [att.com/terms](http://att.com/terms)



HIDALGO COUNTY  
PULMONARY CLINIC  
1304 S 25TH AVE  
EDINBURG TX 78542 - 7205

Page 1 of 2  
Account Number 956 387-0118 710 9  
Billing Date Feb 15, 2013

Web Site att.com



at&t

*Pulmonary*

## Monthly Statement

INVOICE RECEIVED BY:  
*Jeanette Palacios* DATE *2/25/13*  
GOODS/SERVICES RECEIVED BY:  
*Palacios* DATE *2/15 - 2/14/13*  
*3-1100-441-00-340-003-0-531*  
PYMT AMOUNTS *162.40* PO# *688425*  
APPROVED BY: *[Signature]* *2/28/13*

### Bill-At-A-Glance

Previous Bill	271.66
Payment Received 1-18	135.89CR
Adjustments	.00
Past Due - Please Pay Immediately	135.77
Current Charges	162.40
<b>Total Amount Due</b>	<b>\$298.17</b>
Current Charges Due in Full by	Mar 11, 2013

### Billing Summary

Billing Questions? Visit [att.com/billing](http://att.com/billing) Page

Plans and Services	1	162.40
1 800 770-2260		
Payment Arrangements:		
1 800 924-1743		
Service Changes:		
1 800 321-2000		
Repair Services:		
1 800 286-8313		
<b>Total Current Charges</b>		<b>162.40</b>

RECEIVED  
Hidalgo County Health  
& Human Services  
FEB 25 2013  
1304 S. 25th Ave.  
Edinburg, Texas 78542

### Plans and Services

#### Monthly Service - Feb 15 thru Mar 14

Charges for 956 387-0118		
1. Monthly Charges		67.30
Charges for 956 387-0120		
2. Monthly Charges		67.30
<b>Total Monthly Service</b>		<b>134.60</b>

#### Additions and Changes to Service

This section of your bill reflects charges and credits resulting from account activity.

Item No.	Description	Quantity	Monthly Rate	Amount Billed
<b>Activity on Feb 1, 2013</b> (Monthly Charges are Prorated from Feb 1, 2013 through Feb 14, 2013)				
3.	Monthly Service	2		8.40

#### Surcharges and Other Fees

4. Federal Subscriber Line Charge	10.98
5. 911 Fee	1.12
6. State Cost-Recovery Fee	1.08
7. Federal Universal Service Fee	1.98
8. Municipal right-of-way Fee	4.24
<b>Total Surcharges and Other Fees</b>	<b>19.40</b>

#### Taxes

9. Federal	.00
10. State and Local	.00
<b>Total Taxes</b>	<b>.00</b>

#### Total Plans and Services

162.40

Amount Subject to Sales Tax: 1.08

### News You Can Use Summary

- PREVENT DISCONNECT
  - LONG DIST. PROVIDERS
- See "News You Can Use" for additional information

### News You Can Use

#### PREVENT DISCONNECT

Thank you for being a valued customer. Please be aware that all charges must be paid each month to keep your account current and prevent collection activities. We are required to inform you that certain charges such as your telephone line, and fees and surcharges MUST be paid in order to prevent interruption of basic local service. These charges are already included in the Total Amount Due and are \$295.93. Also, neglecting payment for other charges, such as long distance, voice mail, InLine®, wireless, and Internet may result in those services being interrupted.

Local Services provided by AT&T Arkansas, AT&T Kansas, AT&T Missouri, AT&T Oklahoma, or AT&T Texas based upon the service address location.

GO GREEN - Enroll in paperless billing.

Printed on Recyclable Paper

Return bottom portion with your check in the enclosed envelope.



HIDALGO COUNTY  
PULMONARY CLINIC  
1304 S 25TH AVE  
EDINBURG TX 78542 - 7205

Page 2 of 2  
Account Number 956 387-0118 710 9  
Billing Date Feb 15, 2013

INVOICE RECEIVED BY  
DATE  
GOODS/SERVICES RECEIVED BY  
DATE  
100-44-00-340-152-0

**News You Can Use**

**LONG DIST. PROVIDERS**

Our records indicate that you have selected MCI or a company that resells their services as your primary local toll carrier and MCI or a company that resells their services as your primary long distance carrier. Please contact us if this does not agree with your records.

**Terms and Conditions**

**CARRIER QUESTIONS**

You may contact the Public Utility Commission of Texas, Office of Customer Protection, P.O. Box 13326, Austin, TX 78711-3326, 1-512-936-7120 or toll-free in Texas at 1-888-782-8477 if you believe the local exchange provider or the interexchange carrier on your bill are not correct or if there are unauthorized charges on your bill. Hearing and speech impaired customers with text telephones (TTY) may call 1-512-936-7136. When corresponding by mail, include your complaint and copies of the phone bills. Please contact AT&T Texas to switch your service back to the carrier of your choice.

For a complete listing of Terms and Conditions, please refer to:

- The inside of the AT&T White Pages directory, or
- Visit us on the web at [att.com/terms](http://att.com/terms)

