

SUMMARY OF CHANGE ORDER NO. 1

PROJECT :

Hidalgo County Precinct 1 Constable's Office Building, Weslaco, Texas

CONTRACTOR :

Holchemont, LTD

Provide labor, material and equipment for the following work items :

1. Add exterior roof access ladder as per City requirements.....	\$ 3,343.88
2. Delete Restroom 104 fixtures, finish-out to create closet.....	< 568.42 >
3. Install Bullet-resistant wall lining at lobby side of partition between Lobby and Receptionist office. Install bullet-resistant window with drawer at partition between Lobby and Reception, install 3 electrical back boxes for Owner's cameras.....	12,146.40
4. Install electrical power from new building to existing adjacent building for emergency electrical service and conduits for Owner's camera equipment.....	15,990.35
5. Install exit door at Receptionist Office exterior wall, revise conference and office partitions and door locations, re-work electrical and A/C ducts and fire sprinkler system, install CMU to top of exterior wall at rear of building in lieu of 2x8 to close gap, add concrete landing at new exit door at Receptionist office.....	<u>16,785.65</u>
Total cost.....	\$ 47,697.86

Attachments:

Item 1: Contractor's Cost Proposal
Make / model data

Item 2: Contractor's Cost Proposal (credit)
Drawing (part of Item 5 attachments)

Item 3: Contractor's Cost Proposal
Bullet Resistant materials data

Item 4: Contractor's Cost Proposal
Electrical subcontractor's cost breakdown
Electrical Engineer's revision requirements

Item 5: Contractor's Cost Proposal
Drawing - revisions to partitions and doors and restroom conversion to storage room
Drawing - revisions to reflected ceiling plan
Revisions to flooring pattern
Drawing - concrete landing
MEP Engineer's revisions to mechanical and electrical installations



George A. Garcia
4-17-13

ALCOCER GARCIA ASSOCIATES, INC.
McALLEN, TX

Lic. Expiration
date: 8-31-13

Holchemont, Ltd.

900 N. Main St
McAllen, TX 78501
Ph : (956) 686-2901

Change Request

To: George Garcia
Alcocer Garcia Associates
1333 East Jasmine Avenue
McAllen, TX 78501
Ph: (956)618-2007 Fax: (956)618-2008

Number: 1
Date: 10/25/12
Job: 1207-PCT-19 Hid Co Pct 1 Constable Office
Phone:

Description: RFP 1

We are pleased to offer the following specifications and pricing to make the following changes:

As per RFP 1:

REVISED 10APR13

- 1. Furnish and install one exterior aluminum roof access ladder per specifications provided. \$2,775.00
- 2. P & PB \$69.38
- 3. General Conditions \$83.25
- 4. OH & P \$416.25

MODIFIED 07FEB13

REVISED 10APR13

WE STILL NEED A LOCATION ON THE BUILDING AS TO WHERE THE LADDER IS TO BE INSTALLED.

The total amount to provide this work is \$3,343.88

Please note that Holchemont, Ltd. will require an extra 10 days.

If you have any questions, please contact me at (956)686-2901.

Submitted by: Michael C. Montalvo
Holchemont Ltd.

Approved by: _____
Date: _____

Cc: GAS Enterprises Inc

NAME _____
 COMPANY _____
 ADDRESS _____
 CITY, STATE, ZIP _____
 PHONE _____ FAX _____

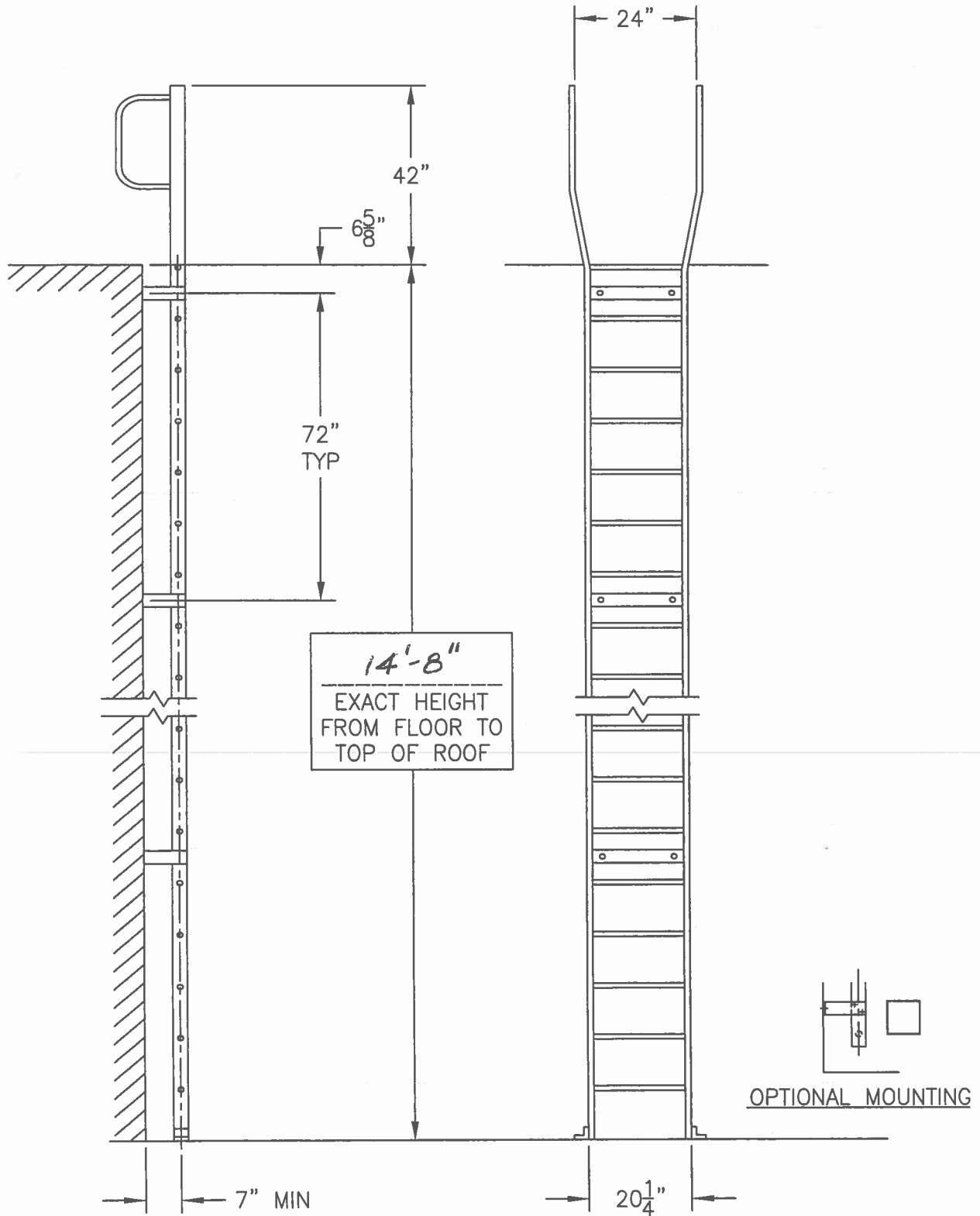


ALACO
 Ladder Company

5167 "G" Street, Chino, CA 91710-5143
 Phone: 888-310-7040 • Fax: 909-591-7565

EXTERIOR ROOF ACCESS

MODEL 561 — Fixed Wall Ladder with Handrails Over Roof



Holchemont, Ltd.

900 N. Main St.
McAllen, TX 78501
Ph : (956) 686-2901

Change Request

To: George Garcia
Alcocer Garcia Associates
1333 East Jasmine Avenue
McAllen, TX 78501
Ph: (956)618-2007 Fax: (956)618-2008

Number: 4
Date: 1/25/13
Job: 1207-PCT-19 Hid Co Pct 1 Constable Office
Phone:

Description: RFP 004 - Aromtex/ArmorCore

We are pleased to offer the following specifications and pricing to make the following changes:

- 1. Provide Arotex Bullet Resistant Transaction Drawer and Window \$6,950.00
- 2. Install bullet resistant ArmorCore panels behind gyp. board on ones sied of partition between the Receptionest and Lobby. Panels to be 8' - 0" high. \$2,880.00
- 3. Electrical Back Boxes \$250.00
- 4. P & PB \$252.00
- 5. General Conditons \$302.40
- 6. GC OH & P \$1,512.00

REVISED 10APR13

The total amount to provide this work is \$12,146.40

Please note that Holchemont, Ltd. will require an extra 14 days.

If you have any questions, please contact me at (956)686-2901.

Submitted by: Michael C. Montalvo
Holchemont Ltd.

Approved by: _____
Date: _____

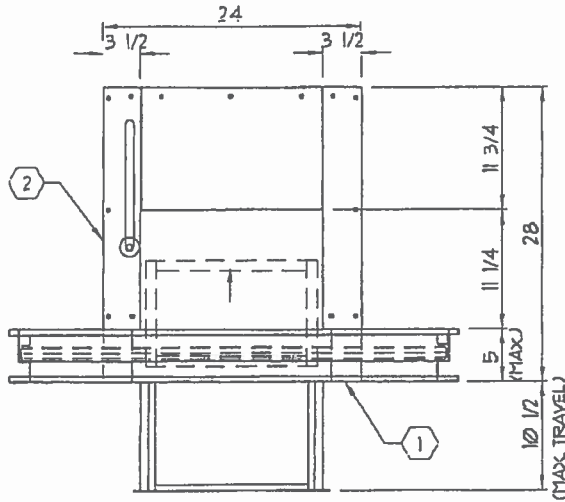
Cc:

RFP 004

SEE SPECIFICATIONS : SSTDRAWER SPECS

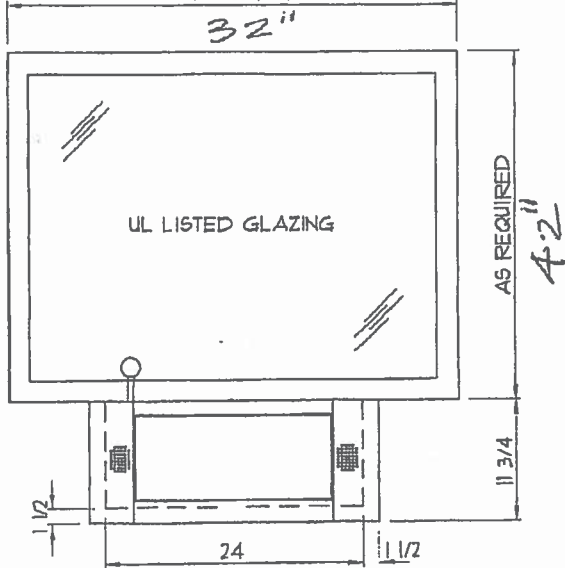
NOTES:

- ① ARMORTEX® BULLET RESISTANT WINDOW SIZES AND TYPE AS REQUIRED
- ② TRANSACTION DRAWER MODEL 6003

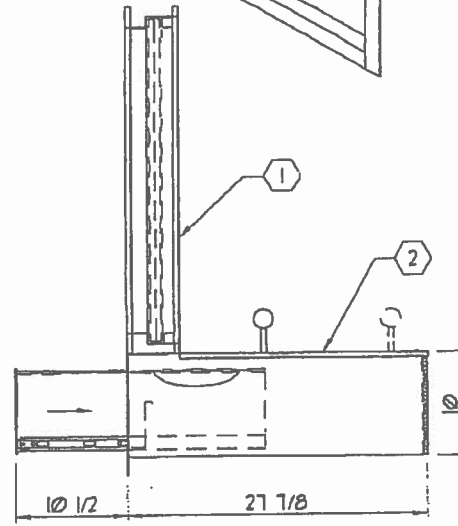
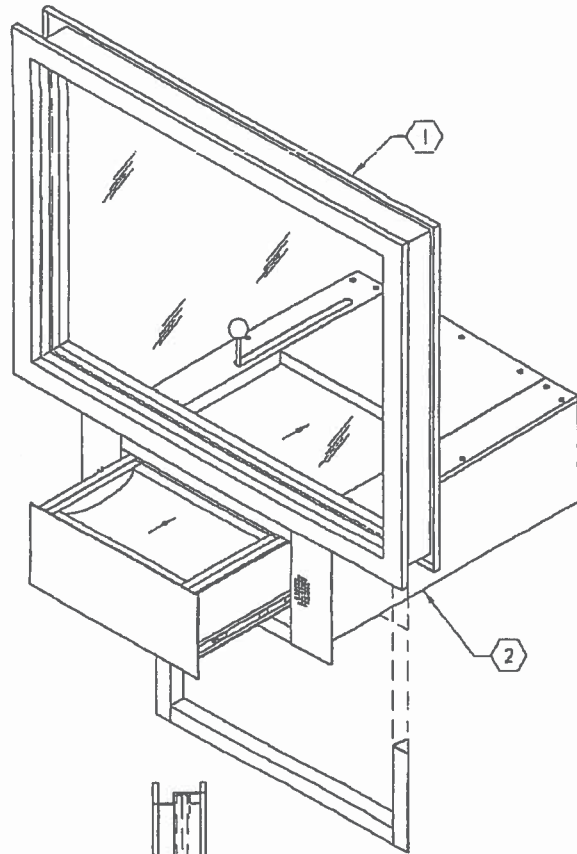


TOP VIEW
 (- REQUIRED)

AS REQUIRED



FRONT VIEW



(MAX TRAVEL)

SIDE VIEW

C:\ARMORTEX MASTERS - 2007\TRANSACTION DRAWERS\T1016004.DWG.DWG 02/19/07 @ 10:08 User: operez

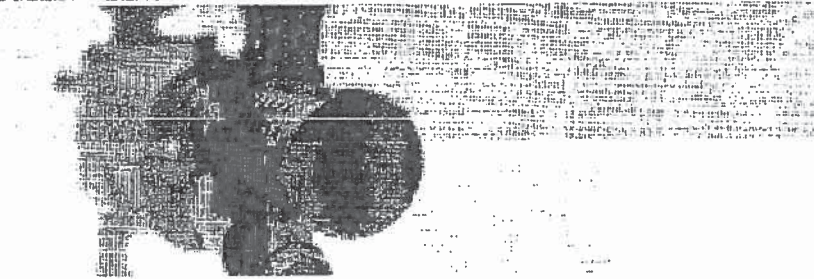
REVISIONS			ARMORTEX® BULLET / BLAST RESISTANT PRODUCTS		BALLISTIC LEVEL 3	
No.	DESCRIPTION	DATE	5926 CORRIDOR PKWY SCHERTZ, TX 78154		DRN.BY:	DATE:
			TEL: 210-661-8306 800-880-8306 FAX: 210-661-8308		A. Perez	02-16-07
			TITLE:	PROJECT NAME:	CHKD.BY:	DATE:
			ARMORTEX® BULLET RESISTANT TRANSACTION DRAWER AND WINDOW UNIT			
			UNLESS OTHERWISE SPECIFIED ALL DIMENSIONS ARE IN INCHES	SCALE: NONE	PROJECT No.	DRAWING No. T1016004
						SHEET 1 OF 1



2FP004

ARMORTEX[®], INC.

BULLET • BLAST • FORCED-ENTRY PROTECTION PRODUCTS



- ▼ Products
 - ▼ Bullet Resistant Products
 - ▶ Doors
 - ▶ Windows & Glazing
 - ▶ Composite Panels
 - ▼ Transaction Equipment
 - ▶ Transaction Drawers
 - ▶ Package Receivers
 - ▶ Money Hoppers
 - ▶ Package Receivers
 - ▶ Accessories
 - ▶ Blast Protection Products
 - ▶ Bullet/Blast Storefront Systems
- ▶ Photo Gallery
- ▶ Company Overview
- ▶ Technical Binder
- ▶ Links
- ▶ Installation
- ▶ Contact Us

Bullet Resistant Transaction Drawers



MODEL SS4D, SS10D, AND SS10D-D

Armortex® Bullet Resistant Transaction Drawers are fabricated from stainless steel to provide long life and trouble-free operation. The drawers are designed with a Bullet Resistant panel in position to protect the operator when the unit is open or closed. The transaction drawers are manufactured with UL Listed Composite, designed to provide protection against UL Level 1 through 4 weapons.

A removable plastic money tray is furnished with the SS4D and SS10D units. The SS10D-D comes without the money tray to provide greater capacity and is ideal for detention applications. The drawers are simple to install and attach to a conventional counter top.



CAD details



ISO 9001:2008 Certified



MODEL 6003

The Armortex® Model 6003 is specifically designed to accommodate a window frame immediately above. This unit has a brushed stainless steel top and front and is available with an optional electronic speaker system. The unit design prevents the drawer from being extended unless the inner door is completely closed, thereby providing maximum protection for your employees. The large capacity bin offers you 1,300

cubic inches of usable space with a sliding dip tray. Available in Levels 1 through 4.

← INCLUDE



MODEL 1724

The Armortex® Model 1724 is specifically designed to accommodate a window frame, not exceeding 5" in depth, immediately above. This drawer is best utilized where an "end opening" requirement exists such as in a drive up application. A clear plastic lid offers a clear view of the contents prior to opening as well as prevents the rush of outside air. The lid has a pushbutton release and handle for operational simplicity. This drawer is available in protection level 3 through 6.

CAD Drawings for Bullet Resistant Transaction Drawers & Trays. All files are in PDF format unless otherwise noted.

Drawing #	Description of File
Word DOC	Transaction Drawer Short Form
T10 t6000	Transaction Drawer Model SS4D

RF 004

Combining woven-roving fiberglass with resin, **ArmorCore®** panels capture the ballistic projectiles in a process called ply-delamination without ricochet or spalling.

ArmorCore® panels deliver superior security against bullets and blast fragments.

Through a proprietary manufacturing process, **ArmorCore®** panels are precision-assembled and cured in a press with heat and pressure, maintaining quality and consistency.

UL 752 Protection Level

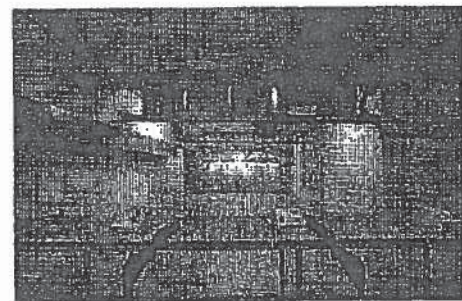
Level / UL Rating	UL	Minimal Thickness	Minimal Weight Per Sq. Ft.	UL Level	Ammunition	Cal.	(G)	Minimum lbs	Velocity ft/s	No. of Shots	UL 752 Paragraph
Level 1	1A	1/4"	2.6 psf		9mm full metal copper jacket with lead core	124	8	1776	350	3	4.3
Level 2	2A	5/16"	3.6 psf	Level II-A	.357 magnum jacketed lead soft point	158	10.2	1250	381	3	4.4
Level 3	3A	7/16"	4.8 psf	Level II-A	.44 magnum lead semi-wadcutters	280	15.8	1350	411	3	4.5
Level 4	4A	1-3/8"	13.9 psf		.30 caliber rifle lead core	180	11.7	2450	774	1	4.6
Level 5	5A	1-7/16"	14.8 psf		7.62mm rifle lead core full metal copper jacket, military ball	150	9.7	2750	838	1	4.7
Level 6	6A	3/8"	3.9 psf	Level II	9mm full metal copper jacket with lead core	124	8	1400	427	5	4.8
Level 7	7A	1-1/8"	11.7 psf		5.56mm rifle full metal copper jacket with lead core	65	3.56	3080	838	5	4.9
Level 8	8A	1-7/16"	15.2 psf	Level II	7.62mm rifle lead core full metal copper jacket, military ball	150	9.7	2750	838	5	4.10
Supplementary Shotgun					12-gauge 00 lead slug (not over 20 lbs)	437	29.3	1585	453	3	5.1
					12-gauge 00 lead shot (not over 20 lbs)	280	15.8	1200	386	3	5.1

ArmorCore® carries a one-hour fire rating compliant to ASTM E119-00 (Fire Testing of Building Construction and Materials)
ArmorCore® Level 3 panels carry a Class IV Forced Entry Protection rating, per ASTM F1233-98.

The Industry Leader

Waco Composites, Ltd. leads the industry in ballistic panel design and fiberglass product development. Our team's experience includes design and development of ballistic resistant panels for a wide range of applications: Commercial, Governmental, Educational and Military.

Consistent ballistic testing, documentation and attention to detail are part of the Waco Composites Quality Assurance Program. Waco Composites is an ISO 9001:2008 registered company.



For Product Details, Specifications and Pricing:

Call us at: **866-688-3088**
 Or visit our website: **www.ArmorCore.com**

Holchemont, Ltd.

900 N. Main St.
McAllen, TX 78501
Ph : (956) 686-2901

Change Request

To: George Garcia
Alcocer Garcia Associates
1333 East Jasmine Avenue
McAllen, TX 78501
Ph: (956)618-2007 Fax: (956)618-2008

Number: 3
Date: 12/12/12
Job: 1207-PCT-19 Hid Co Pct 1 Constable Office
Phone:

Description: RFP 003

We are pleased to offer the following specifications and pricing to make the following changes:

RFP 003

REVISED 10APR13

DEDUCTS

Plumbing Credits \$450.00

Ceramic Tile Credits \$250.00

Accessories Credits \$ 150.00

ADDS

Painting \$100.00

Drywall Framing \$52.88

General Conditions \$24.45

OH & P \$104.25

The total amount to provide this work is \$-568.42

Please note that Holchemont, Ltd. will require an extra 4 days.

If you have any questions, please contact me at (956)686-2901.

Submitted by: Michael C. Montalvo
Holchemont Ltd.

Approved by: _____
Date: _____

Cc:

Holchemont, Ltd.

900 N. Main St.
McAllen, TX 78501
Ph : (956) 686-2901

Change Request

To: George Garcia
Alcocer Garcia Associates
1333 East Jasmine Avenue
McAllen, TX 78501
Ph: (956)618-2007 Fax: (956)618-2008

Number: 8
Date: 1/30/13
Job: 1207-PCT-19 Hid Co Pct 1 Constable Office
Phone:

Description: Electrical Changes RFP 008

We are pleased to offer the following specifications and pricing to make the following changes:
Scope is for the Electrical changes as noted on drawing issued by Trinity Engineering Revised 12-5-12
Received 1-9-13

- 1-4" PVC conduit for Camera controls
- 1-2" PVC conduit for power to camera in existing building

Subcontractor	\$13,270.00
General Conditions	\$398.10
P & PB	\$331.75
OH & P	\$1,990.50

Price is valid for only 10 Days.
REVISED 10APR13

The total amount to provide this work is \$15,990.35

Please note that Holchemont, Ltd. will require an extra 10 days.

If you have any questions, please contact me at (956)686-2901.

Submitted by: Michael C. Montalvo
Holchemont Ltd.

Approved by: _____
Date: _____

Cc:





METRO
ELECTRIC, INC.
TECL# 17140

MAIN OFFICE
1901 INDUSTRIAL DRIVE
McALLEN, TX 78504-4015
(956) 686-2323

BRANCH OFFICE
5255 COMMERCIAL DRIVE
P.O. BOX 4270
BROWNSVILLE, TX 78523
(956) 831-7801

HARLINGEN, TX 78550
(956) 421-2600

WWW.METROELECTRIC-RGV.COM

January 28, 2013

Holchemont, LTD.
900 N. Main St.
McAllen, TX 78501

Attn: Michael Montalvo
Re: Hidalgo Pct. 1 New Office
Metro Electric CPR #2

Please add **\$13,270.00** to our base contract amount for the following changes.

The following Scope of Work is included

- 1-4" PVC conduit for Camera controls
- 1-2" PVC conduit for power to camera in existing building.
- 3- Motion detectors are included

Pricing is valid for two weeks only and we will need an additional ten days to Complete this work.

Should you have any questions, please advise accordingly.

Sincerely,
Metro Electric, Inc.

Jay Guajardo
Project Manager

File C.O. #2-03005

COMMERCIAL • INDUSTRIAL

Regulated by The Texas Department of Licensing and Regulation, P.O. Box 12157, Austin, Texas 78711,
1-800-803-9202, 512-463-6599; website: www.license.state.tx.us/complaints

Change Price Request Cost Analysis

PROJECT: Hidalgo Pct. 1 New Office
 CONTRACTOR: Holchemont, LTD.

DESCRIPTION OF CHANGE: Add 1-4" pvc underground conduit for camera controls, add 1-2" pvc conduit for emergency power from MDP to cameras in existing building and also provide 3 additional motion detectors.

Metro Electric, Inc. CPR #2 Page 1 of 2

Description	Quan. Reqd.	Material Cost	Unit	Material Total	Labor Total
4" PVC CONDUIT	220.00	\$ 377.61	C	\$ 830.74	\$ 1,157.73
4" PVC COUPLINGS	6.00	\$ 581.51	C	\$ 34.69	\$ 29.60
4" PVC F/A	6.00	\$ 733.98	C	\$ 44.04	\$ 157.87
4" GRC 90° ELBOWS	3.00	\$ 185.23	E	\$ 555.69	\$ 355.21
4" GRC COUPLINGS	1.00	\$ 1,995.88	C	\$ 19.96	\$ 16.45
4" GRC CONDUIT	10.00	\$ 3,081.44	C	\$ 308.14	\$ 98.87
4" GRC LB	2.00	\$ 10,934.90	C	\$ 218.70	\$ 296.01
4" EMT CONDUIT	20.00	\$ 1,179.88	C	\$ 235.98	\$ 105.25
4" S/S CONNECTORS	2.00	\$ 3,005.12	C	\$ 60.10	\$ 29.60
4" S/S COUPLINGS	2.00	\$ 2,073.99	C	\$ 41.48	\$ 14.47
4" UNISTRUT STRAPS	6.00	\$ 277.61	C	\$ 16.86	\$ 11.84
DEEP UNISTRUT	20.00	\$ 852.20	C	\$ 170.44	\$ 78.94
3/8" ALL THREAD	30.00	\$ 136.83	C	\$ 41.05	\$ 19.73
2" PVC CONDUIT	160.00	\$ 130.91	C	\$ 209.48	\$ 420.99
2" PVC COUPLINGS	6.00	\$ 142.56	C	\$ 8.55	\$ 29.60
2" PVC F/A	6.00	\$ 194.12	C	\$ 11.65	\$ 59.20
2" GRC 90° ELBOWS	3.00	\$ 67.27	C	\$ 2.02	\$ 118.40
2" GRC COUPLINGS	2.00	\$ 5.80	E	\$ 11.80	\$ 16.45
2" GRC CONDUIT	20.00	\$ 1,032.71	C	\$ 206.54	\$ 72.36
2" GRC LB	2.00	\$ 6,472.71	C	\$ 129.45	\$ 108.54
2" EMT CONDUIT	50.00	\$ 464.76	C	\$ 232.39	\$ 131.56
2" S/S CONNECTORS	2.00	\$ 514.99	C	\$ 10.30	\$ 16.45
2" S/S COUPLINGS	4.00	\$ 564.93	C	\$ 22.60	\$ 15.79
2" UNISTRUT STRAPS	10.00	\$ 158.96	C	\$ 15.70	\$ 13.16
				\$ -	\$ -
				\$ -	\$ -
Subtotals				\$ 3,438.12	\$ 3,373.86
Sales Tax				\$ -	
Subtotal w/ Tax				\$ 3,438.12	

Bond	\$ -
Subtotal (Material and Labor) Page 1 of 2	\$ 6,811.98
Plus 0.00 % of (Material and Labor) For Overhead	\$ -
Subtotal (Material, Labor and Overhead) Page 1 of 2	\$ 6,811.98
Plus 0.00 % of (Material, Labor, and Overhead) For Profit	\$ -
Total (Material, Labor, Overhead, and Profit) Page 1 of 2	\$ 6,811.98



REVISION

Sent to Architect: AGA, INC

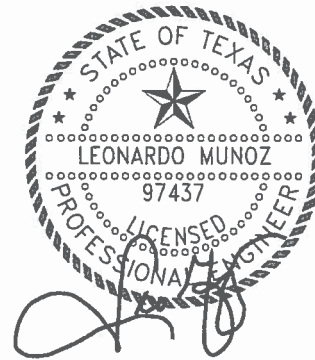
Date: 12/5/2012

Project Name: Constable's office Building

Project Number: 112.01

The work shall be carried out in accordance with the following supplemental instructions issued in accordance with the Contract Documents without change in Contract Sum or Contract Time Proceeding with the Work in accordance with these instructions indicates your acknowledgement that there will be no change in the Contract Sum or Contract Time.

12/5/2012



Drawings:		
Sheet No.	Additon / Change or Deletion	
ES1.1 A3	Add 1-4"underground counduit with pullstring for camera controls. Rise conduit on both ends approximately 24"aff. Cap both ends.	
	Provide 2"conduit for emergency power from MDP to cameras in existing building. Refer to attachment.	
E2.1	Provide additional motion detectors. Refer to attachment.	
	3	

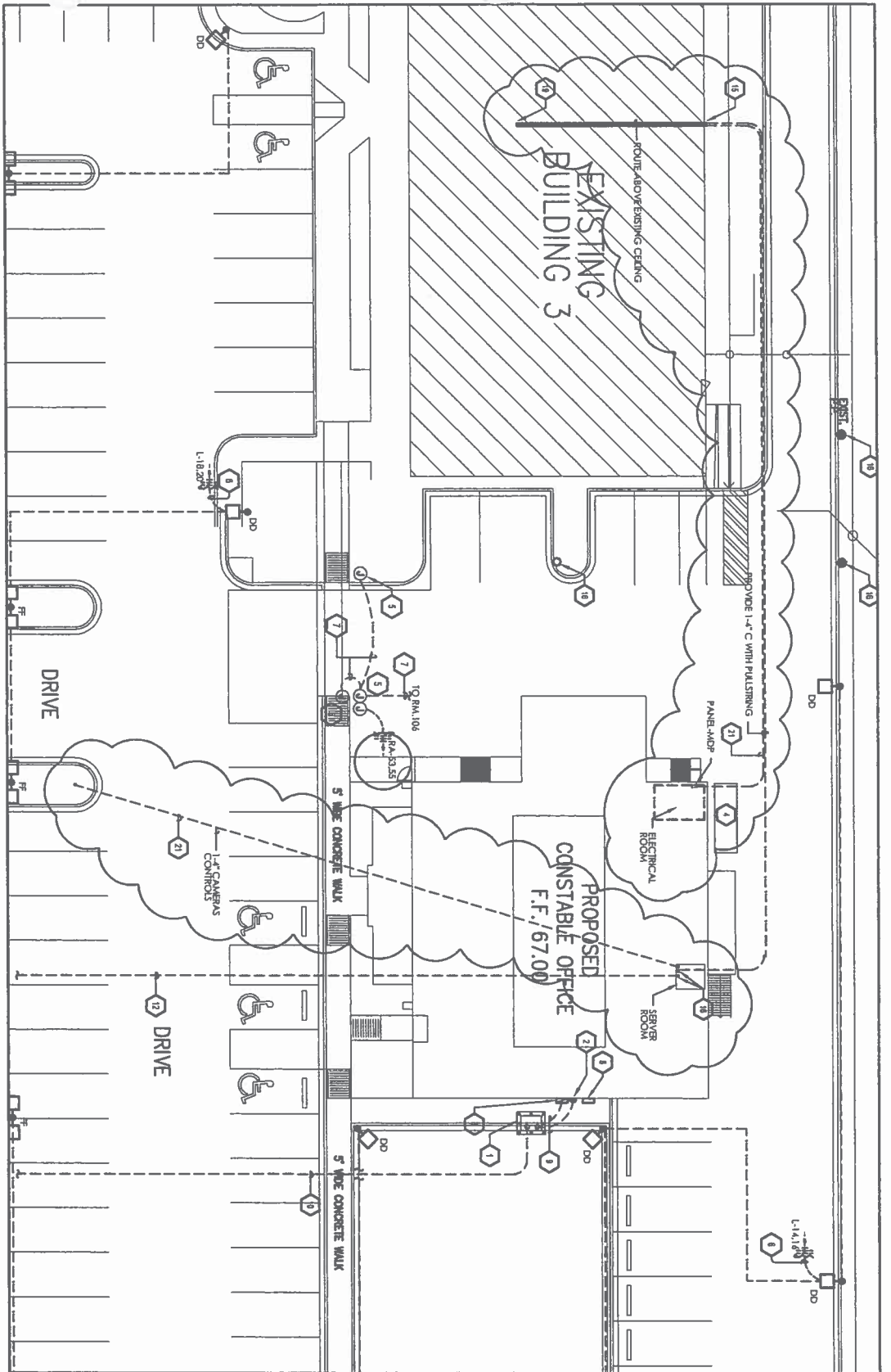


NORTH

ELECTRICAL SITE PLAN

SCALE: 1"=30'

- 20 STOPS OF 24" AIR.
- 21 PROVIDE 1-4" C WITH PULSTRING FOR CAMERA CONTROLS.
- 22 PROVIDE 1-2" C WITH PULSTRING FOR FUTURE BACKUP POWER TO CAMERAS IN EXISTING BUILDING. VERIFY EXACT LOCATION WITH OWNER PRIOR TO ANY WORK. CONDUIT FROM NEW PANEL-MDP.



TRINITY
MEP ENGINEERING

3533 Howland Dr., Ste A 1, Waco, TX 76798
 p:817.778.0800 f:817.778.0750
 www.trinitymep.com
 Texas Registered Engineering Firm - Project
 Project number: 11201



12/05/12

CONSTABLE'S OFFICE BUILDING HIDALGO COUNTY PRECINCT No. 1

1900 JOE STEPHENS
WESLACO, TEXAS

Alcócer García Associates, inc.

1333 E. Jasmine Ave.
McAllen, Texas 78501
Office: 956.518.2807
Fax: 956.618.2008
Web: WWW.AGADC.COM



ES1.1

PROJECT # 11201
 ISSUED: 12/07/12
 DRAWN BY: TRINITY CAD
 CHECKED BY: LHM
 FILE NAME:
 SHEETS: 001/04/1/1201

ARCHITECT:
 GEORGE A. GARCIA
 DATE: 08-24-11

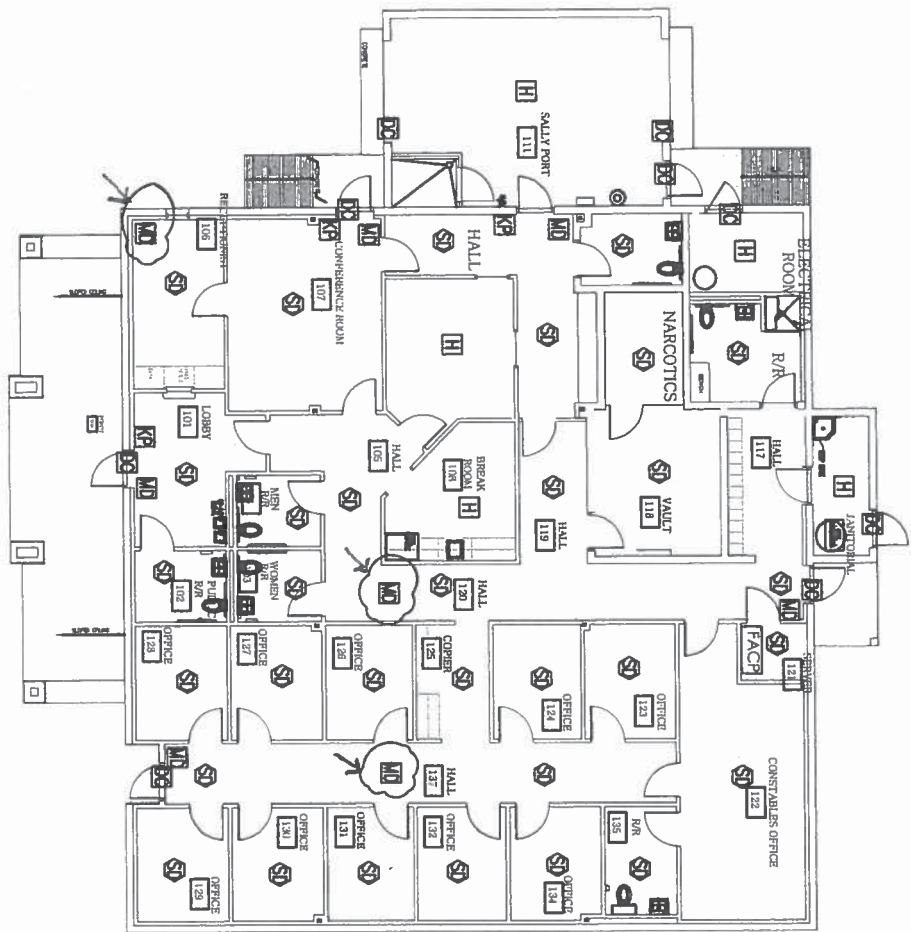
THIS PLAN OR PORTION THEREOF IS THE PROPERTY OF ALCOCER GARCIA ASSOCIATES, INC. IT IS TO BE USED ONLY FOR THE PROJECT AND SITE SPECIFICALLY IDENTIFIED HEREON. IT IS NOT TO BE REPRODUCED, COPIED, REPRODUCED, OR TRANSMITTED IN ANY FORM OR BY ANY MEANS, ELECTRONIC OR MECHANICAL, INCLUDING PHOTOCOPYING, RECORDING, OR BY ANY INFORMATION STORAGE AND RETRIEVAL SYSTEM, WITHOUT THE WRITTEN PERMISSION OF ALCOCER GARCIA ASSOCIATES, INC.



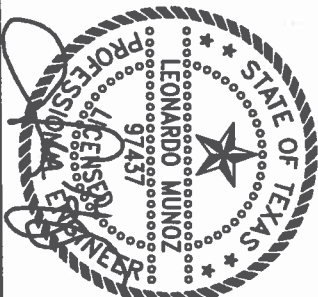
NORTH

SPECIAL SYSTEMS PLAN

SCALE: 1/16" = 1'-0"



TRINITY
 MEP ENGINEERING
 3583 Montford Dr., Ste A1 Waco, TX 76798
 817.770.0000 | 817.770.0001
 www.trinitymep.com | Copyright 2011
 Project number: 1201



REVISION
 12/05/12

CONSTABLE'S OFFICE BUILDING
 HIDALGO COUNTY PRECINCT No. 1
 1900 JOE STEPHENS
 WESLACO, TEXAS

Alcócer García Associates, Inc.
 1333 E. Jasmine Ave.
 McAllen, Texas 78501
 Office: 361-618.2007
 Fax: 361-618.2008
 Web: WWW.AGADC.COM



E2.1

JACOBSON
 GEORGE A. GARCIA
 DATE: 08-24-11

PROJECT # 11201
 REVISION: 12/05/2012
 DRAWN BY: TRINITY CAD
 CHECKED BY: LHM
 FILE NAME:
 SHEET: 201.1241.00.00

THIS PLAN OR THESE
 SPECIFICATIONS OR
 CONDITIONS OF CONTRACT
 SHALL BE VOID AND
 INVALID UNLESS THEY ARE
 INTERPRETED AND APPLIED
 IN CONJUNCTION WITH
 THE CONDITIONS OF CONTRACT.

REVISION

Sent to Architect: AGA, INC

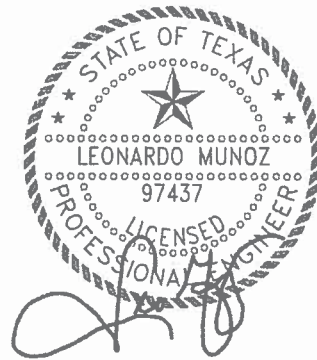
Date: 12/5/2012

Project Name: Constable's office Building

Project Number: 112.01

The work shall be carried out in accordance with the following supplemental instructions issued in accordance with the Contract Documents without change in Contract Sum or Contract Time Proceeding with the Work in accordance with these instructions indicates your acknowledgement that there will be no change in the Contract Sum or Contract Time.

12/5/2012



Drawings:		
Sheet No.	Addition / Change or Deletion	
ES1.1 A3	Add 1-4"underground couduit with pullstring for camera controls. Rise conduit on both ends approximately 24"aff. Cap both ends. Provide 2"conduit for emergency power from MDP to cameras in existing building. Refer to attachment.	
E2.1	Provide additional motion detectors. Refer to attachment.	

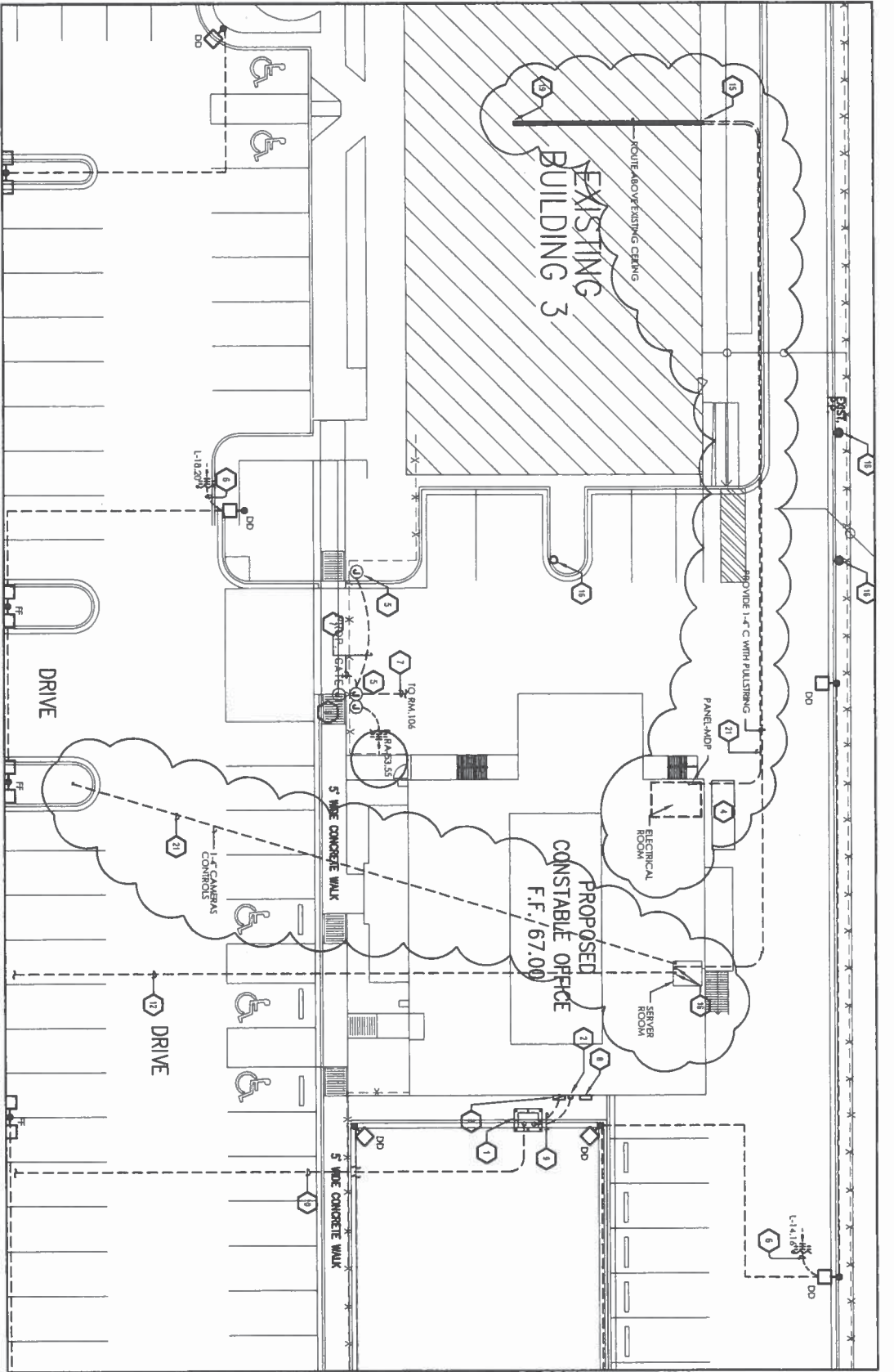


NORTH

ELECTRICAL SITE PLAN

SCALE: 1"=30'

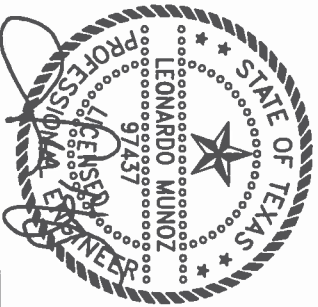
- 20 STUB-UP 24" AFF.
- 21 PROVIDE 1-4" C WITH PULSTRING FOR CAMERA CONTROLS.
- 22 PROVIDE 1-2" C WITH PULLSTRING FOR FUTURE BACKUP POWER TO CAMERAS IN EXISTING BUILDING. VERIFY EXACT LOCATION WITH OWNER PRIOR TO ANY WORK. CONDUIT FROM NEW PANEL-MDP.



TRINITY

MEP ENGINEERING

3333 Monahan Dr. Ste A.1. Waco, TX 76798
 P: 956.872.0500 | F: 956.851.5750
 www.trinitymepe.com | Copyright 2011
 Texas Registered Engineering Firm - F-10282
 Project Number: 11201



12/05/12

CONSTABLE'S OFFICE BUILDING HIDALGO COUNTY PRECINCT No. 1

1900 JOE STEPHENS
 WESLACO, TEXAS

Atcór García Associates, Inc.

1333 E. Jasmine Ave.
 McAllen, Texas 78501
 Office: 956-618-2007
 Fax: 956-618-2008
 Web: WWW.AGADC.COM



ES1.1

PROJECT #	11201
ISSUE	12/05/12
OWNER	HIDALGO COUNTY
DATE	08-24-11
DESIGNER	LEONARDO MUNOZ
CHECKER	LEONARDO MUNOZ
SCALE	AS SHOWN
FILE NAME	ES1.1
SHEET	04 OF 04

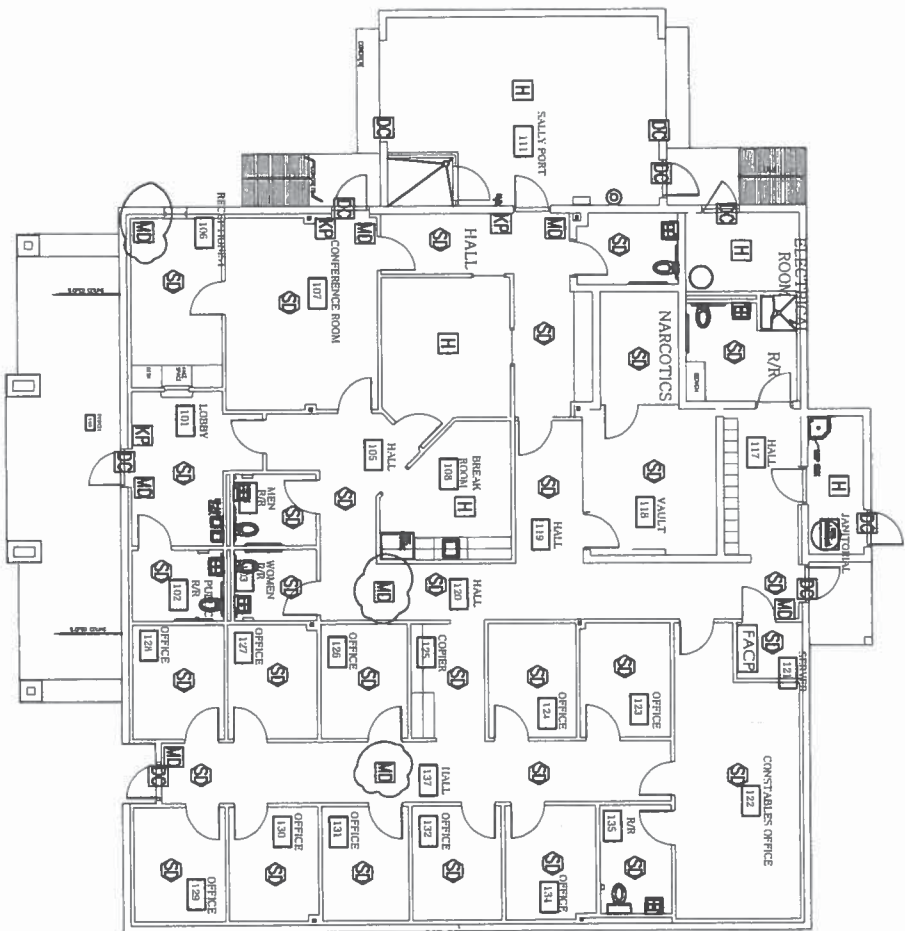
THE FIRM OF TRINITY ENGINEERING IS NOT RESPONSIBLE FOR THE CORRECTNESS OF THE INFORMATION CONTAINED HEREIN NOR FOR THE COMPLETION OF THE PROJECT OR FOR THE RESULTS THEREOF. THE USER OF THIS INFORMATION SHALL BE RESPONSIBLE FOR OBTAINING NECESSARY PERMITS AND FOR THE COMPLETION OF THE PROJECT.



NORTH

SPECIAL SYSTEMS PLAN

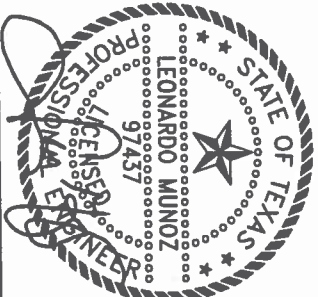
SCALE: 1/16" = 1'-0"



TRINITY

MEP ENGINEERING
3533 Woodland Dr., Ste A1, Waco, TX 77786
p: 855.879.0500 | f: 855.851.5750
www.trinitymep.com | Copyright 2011
Texas Registered Engineering Firm - F10082
Project Number: 11201

REVISION
12/05/12



CONSTABLE'S OFFICE BUILDING HIDALGO COUNTY PRECINCT No. 1

1900 JOE STEPHENS
WESLACO, TEXAS

Altócer García Associates, Inc.

1233 E. Jasmine Ave.
McAllen, Texas 78501
Office: 956.618.2007
Fax: 956.618.2008
Web: WWW.AGADC.COM



E2.1

PROJECT #	11201
ISSUED	12/05/2012
DRAWN BY	TRINITY CAD
CHECKED BY	LM
FILE NAME	
SHEET #	2012.01.12

THIS USE OF THESE
DRAWINGS IS RESTRICTED TO
THE PROJECT AND SITE
SPECIFICALLY IDENTIFIED
HEREON. ANY OTHER USE,
REPRODUCTION, OR
MODIFICATION WITHOUT
THE WRITTEN PERMISSION
OF THE ENGINEER IS
PROHIBITED.

REGISTERED
ENGINEER
LEONARDO MUNOZ
DATE: 06-24-11

Holchemont, Ltd.

900 N. Main St.
McAllen, TX 78501
Ph : (956) 686-2901

Change Request

To: George Garcia
Alcocer Garcia Associates
1333 East Jasmine Avenue
McAllen, TX 78501
Ph: (956)618-2007 Fax: (956)618-2008

Number: 10
Date: 2/25/13
Job: 1207-PCT-19 Hid Co Pct 1 Constable Office
Phone:

Description: PART OF CHANGE ORDER NO. 1

We are pleased to offer the following specifications and pricing to make the following changes:

Revisions :

"PART OF CHANGE ORDER NO. 1" DATED 01APR13

- 1. Provide and Install New HM Frame, Door, and Hardware (Door #36) \$1,870.00
(Door & hardware same as Door #3))
- 2. Masonry Work for new door \$2,295.00
- 3. Partitions & HM Frames \$450.00
- 4. Electrical \$2,033.00
- 5. Mechanical \$1,464.00
- 6. Fire Wet Sprinkler \$2,243.00
- 7. Wind Storm \$180.00
- 8. Access Panels \$500.00
- 9. Rough Carpentry \$225.00
- 10. CMU Gap \$2,500.00
- 11. Additional Landing
- 10. P & PB \$348.25
- 11. General Conditions \$417.90
- 12. OH & P \$2,089.50

The total amount to provide this work is \$16,785.65

Please note that Holchemont, Ltd. will require an extra 12 days.

If you have any questions, please contact me at (956)686-2901.

Holchemont, Ltd.

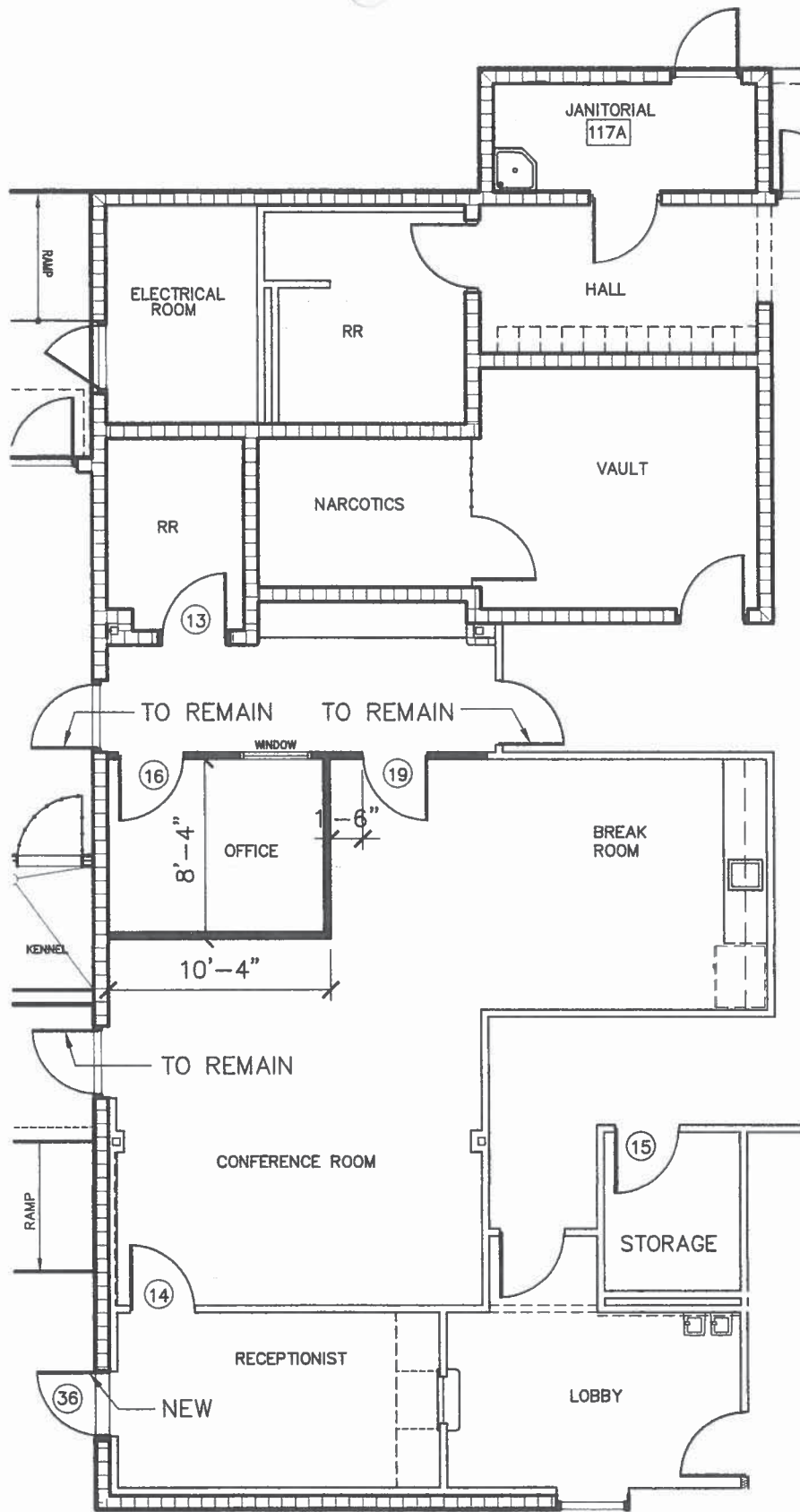
900 N. Main St.
McAllen, TX 78501
Ph : (956) 686-2901

Submitted by: Michael C. Montalvo
Holchemont Ltd.

Approved by: _____
Date: _____

Cc:





**REVISED PARTITIONS
AND DOOR LOCATIONS**

SCALE: 1/8" = 1'-0"



LICENSE EXPIRATION
DATE: 08.31.13

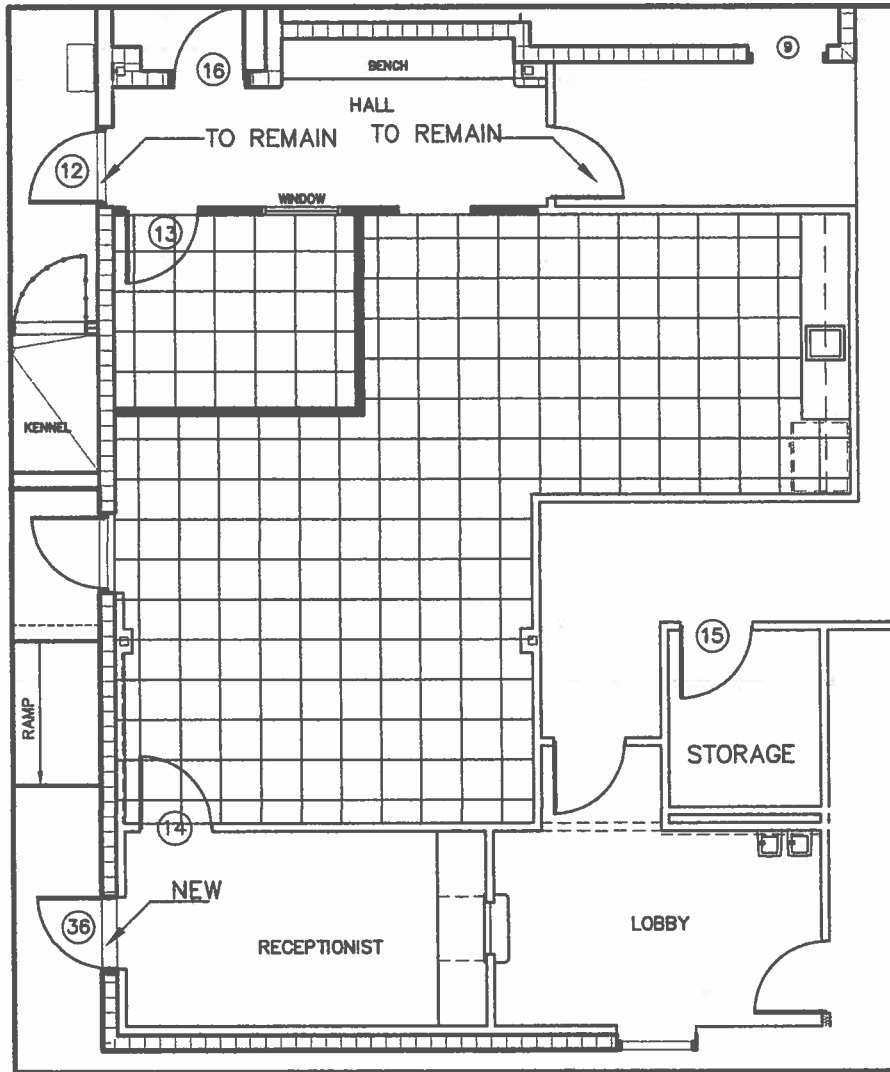
**CONSTABLES OFFICE BUILDING
HIDALGO COUNTY PCT 1
PART OF CHANGE ORDER NO.1**

Alcocer Garcia Associates, inc.

1333 E. Jasmine Ave.
McAllen, Texas 78501
Office: 956.618.2007
Fax: 956.618.2008



DATE: 04.01.13



NORTH
 (N) **REVISED FLOORING PATTERN**
 SCALE: 1/8" = 1'-0"

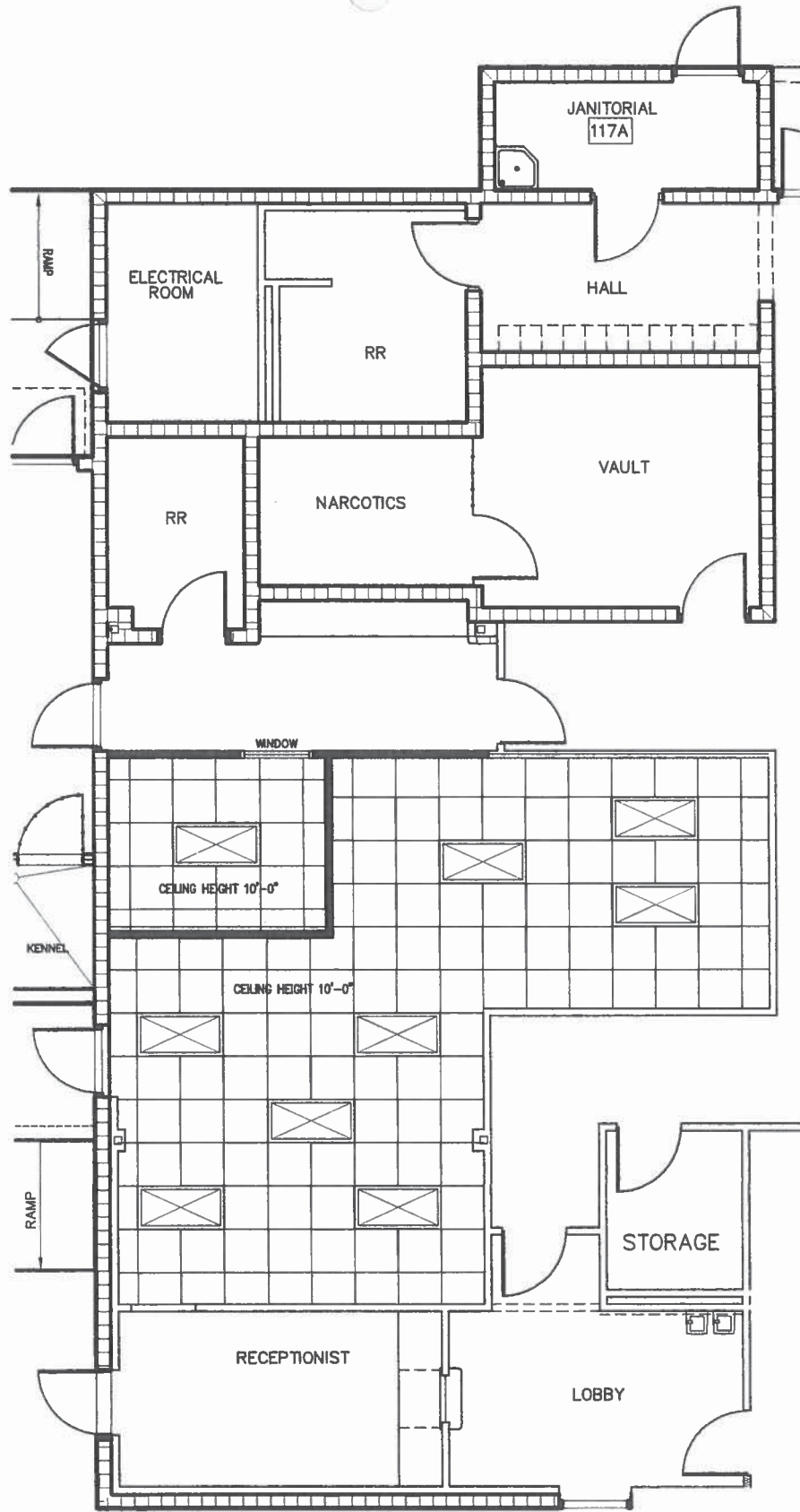
**CONSTABLES OFFICE BUILDING
 HIDALGO COUNTY PCT 1
 REVISED FLOORING PATTERN**

Alcocer Garcia Associates, Inc.

1333 E. Jasmine Ave.
 McAllen, Texas 78501
 Office: 956.618.2007
 Fax: 956.618.2008

AGA

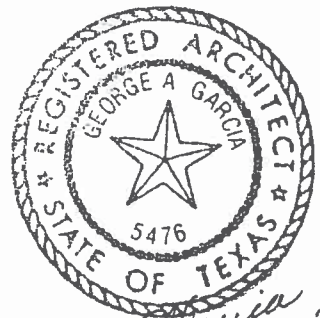
5



**REVISED REFLECTED
CEILING PLAN**



SCALE: 1/8" = 1'-0"



George A. Garcia
4-1-13

LICENSE EXPIRATION
DATE: 08.31.13

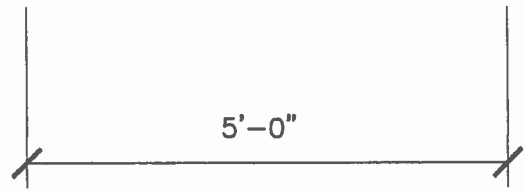
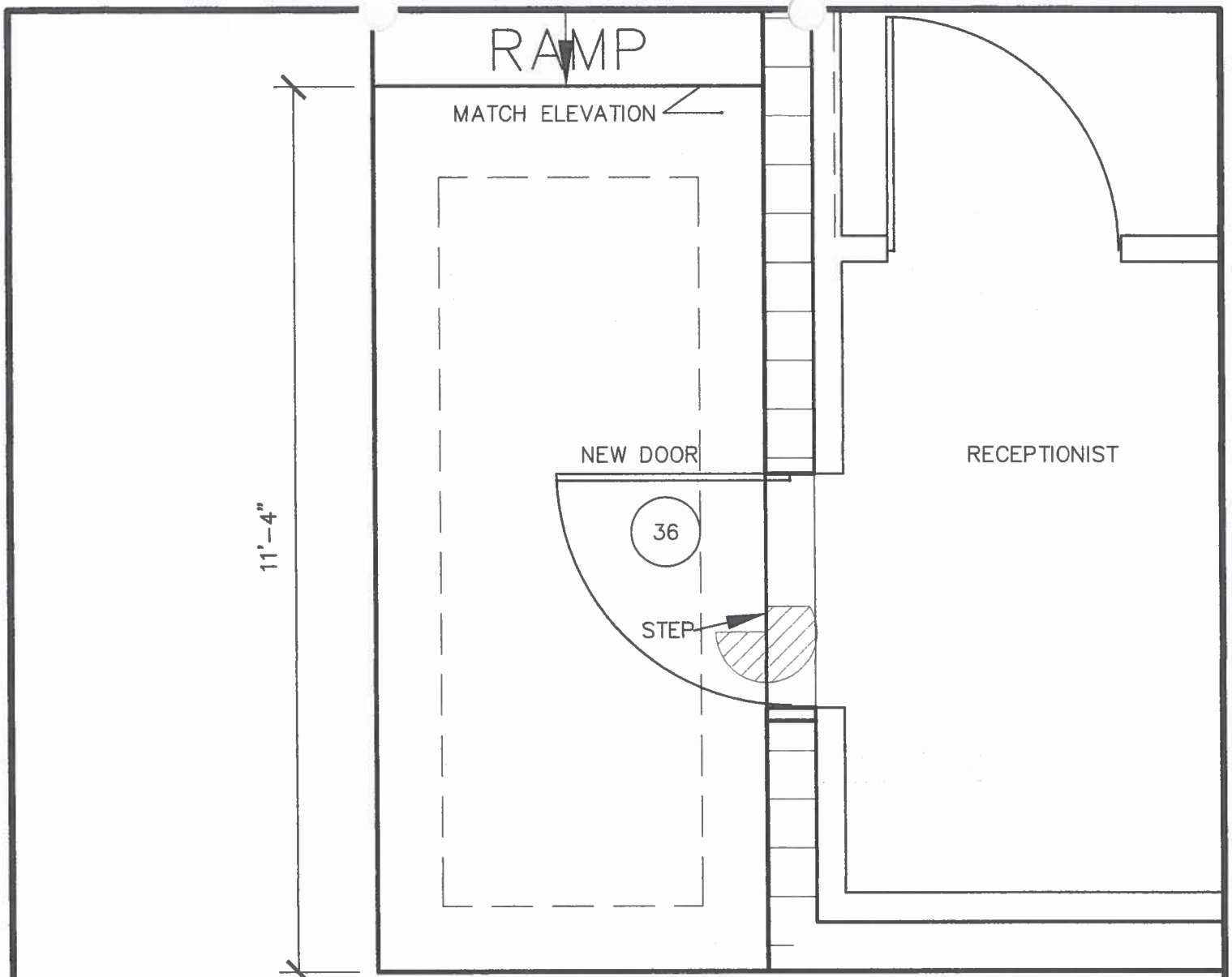
**CONSTABLES OFFICE BUILDING
HIDALGO COUNTY PCT 1**

PART OF CHANGE ORDER NO.1

Alcocer Garcia Associates, Inc.
1333 E. Jasmine Ave.
McAllen, Texas 78501
Office: 956.618.2007
Fax: 956.618.2008

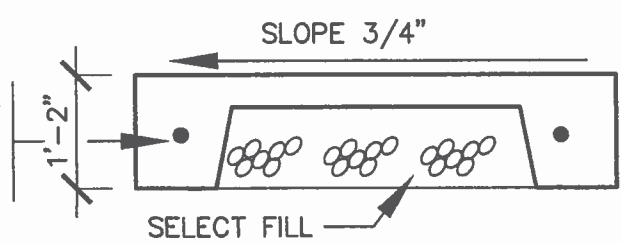


DATE: 04.01.13



ROUGH BROOM
FINISH SURFACE

2,800 PSI CONCRETE
#5 REBAR ALL
AROUND



SIDEWALK DETAIL
SCALE: 1/2"=1'-0"



LICENSE EXPIRATION
DATE: 08.31.13

**CONSTABLES OFFICE BUILDING
HIDALGO COUNTY PCT 1**

PART OF CHANGE ORDER NO.1

Alcocer Garcia Associates, Inc.
1333 E. Jasmine Ave.
McAllen, Texas 78501
Office: 956.618.2007
Fax: 956.618.2008



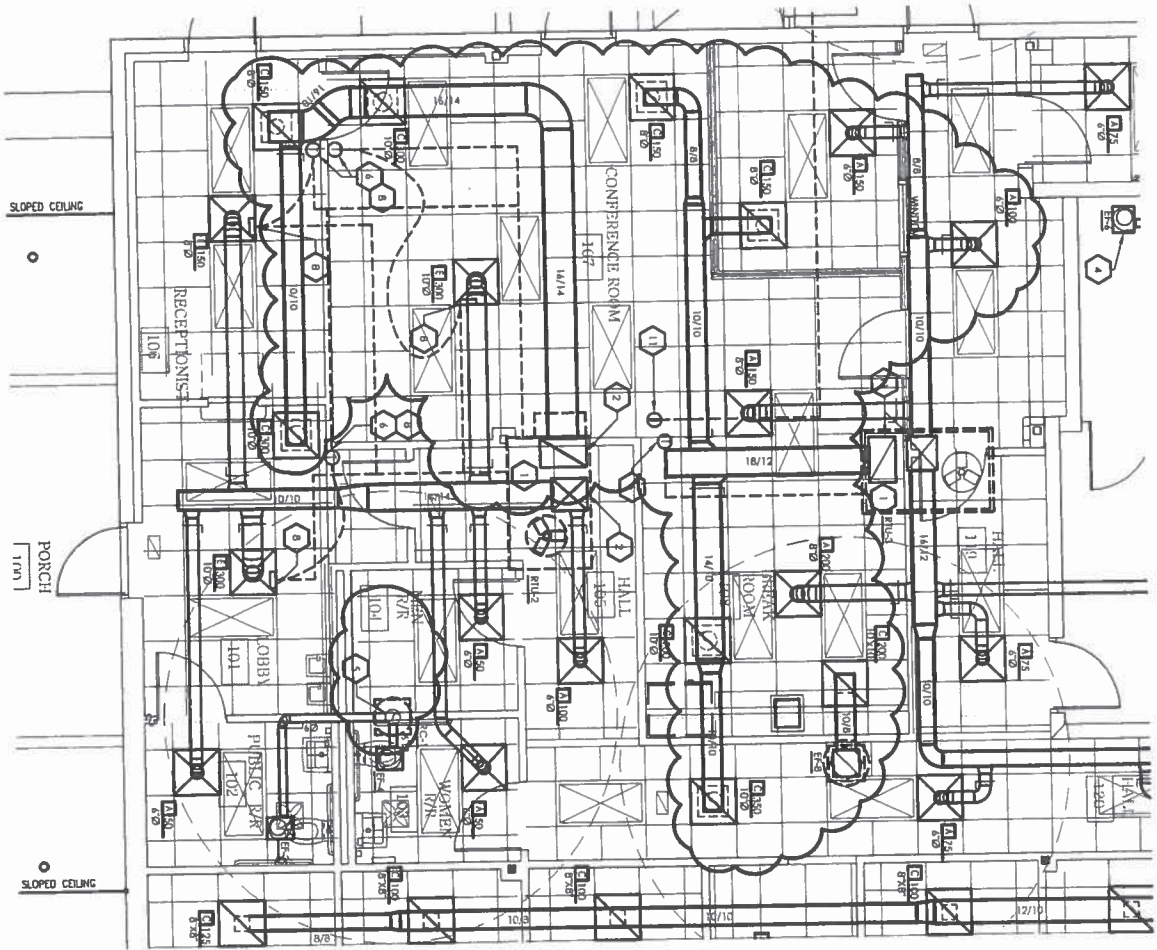
DATE: 04.10.13



NORTH

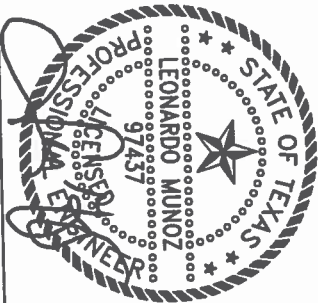
MECHANICAL FLOOR PLAN

SCALE: 1/8" = 1'-0"



TRINITY

MEP ENGINEERING
 3533 Highway 101, Suite 111, Houston, TX 77058
 281.473.8500 | 281.473.8501
 www.trinitymep.com | Copyright 2011
 Texas Registered Engineering Firm - F10242
 Project Number: 112201



REVISION
 04/05/13

CONSTABLE'S OFFICE BUILDING
 HIDALGO COUNTY PRECINCT No. 1

1900 JOE STEPHENS
 WESLACO, TEXAS

Alcócer García Associates, inc.

1333 E. Jasmine Ave.
 McAllen, Texas 78501
 Office: 956.618.2007
 Fax: 956.618.2008
 Web: WWW.AGCNC.COM

AGA inc.

M1.1

PROJECT # 112201
 ISSUED: 12/07/2012
 DRAWN BY: JIMMY COO
 CHECKED BY: LM
 FILE NAME:
 SHEET: 1 of 4

DESIGNER:
 GEORGE A. CANOJA
 DATE: 08-24-11

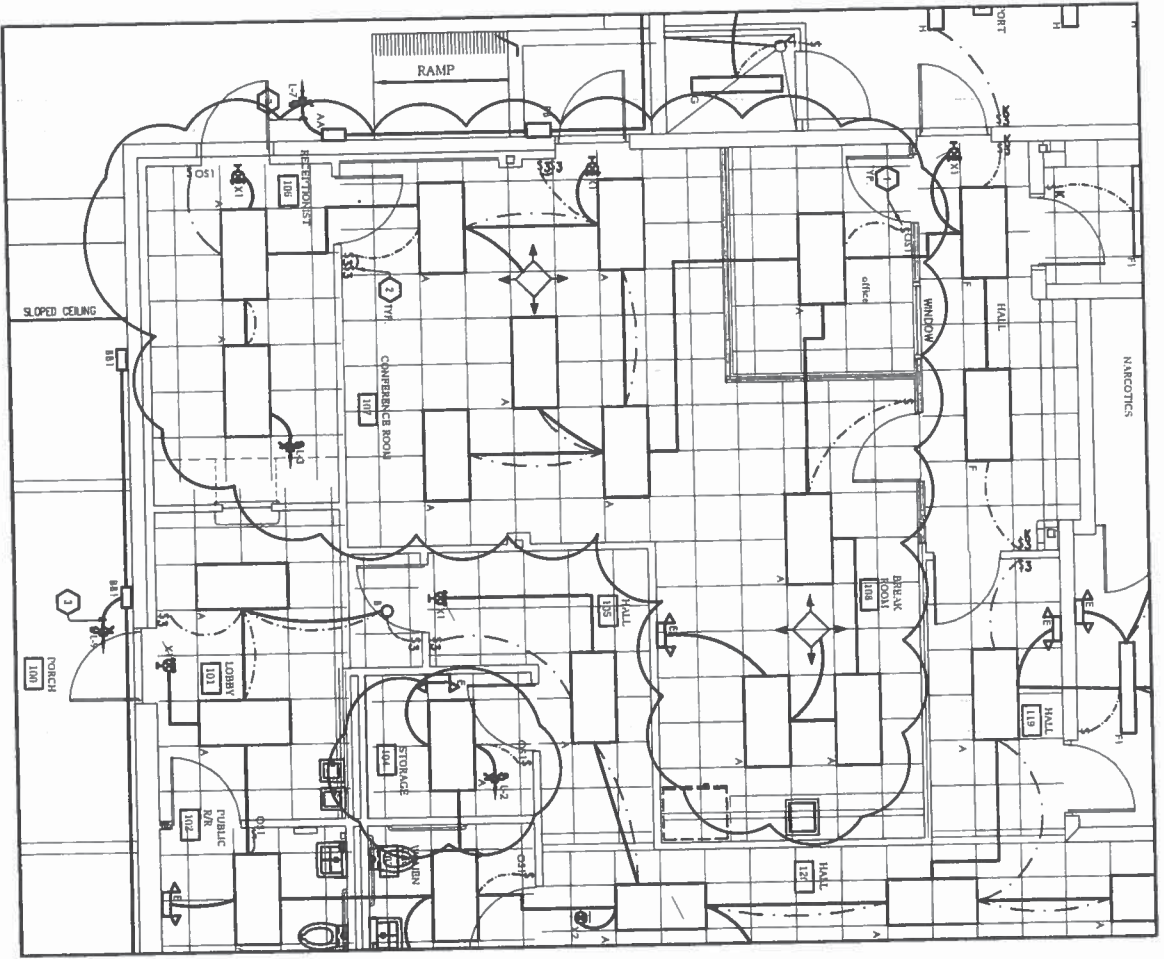
THIS PLAN OR PORTION THEREOF IS HEREBY CERTIFIED TO BE CORRECT AND TO COMPLY WITH ALL CITY, STATE AND FEDERAL REQUIREMENTS AND REGULATIONS AND TO BE IN ACCORDANCE WITH THE PROVISIONS OF THE ENGINEERING PROFESSIONAL ACT.



NORTH

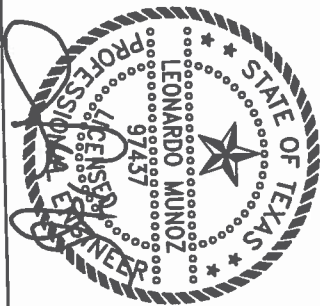
ELECTRICAL LIGHTING PLAN

SCALE: 1/8" = 1'-0"



TRINITY

MEP ENGINEERING
 3520 Westchase Parkway, Suite 411, Houston, TX 77056
 281.472.0500 | 281.472.0501
 www.trinitymep.com | Copyright 2011
 Texas Registered Engineering Firm - F10382
 Project number: 11201



REVISION
 04/5/13

CONSTABLE'S OFFICE BUILDING
 HIDALGO COUNTY PRECINCT No. 1

1900 JOE STEPHENS
 WESLACO, TEXAS

Alc6cer Garcia Associates, Inc.

1333 E. Jasmine Ave
 McAllen, Texas 78501
 Office: 956.618.2007
 Fax: 956.618.2008
 Web: WWW.AGADC.COM



ARCHITECT:
 GENOVE A. GARCIA
 DATE: 08-24-11

PROJECT #: 11201
 ISSUED: 12/2/2012
 DRAWN BY: TRINITY CAD
 CHECKED BY: LLI
 FILE NAME:
 SHEET: 11201-EL-101

E1.1

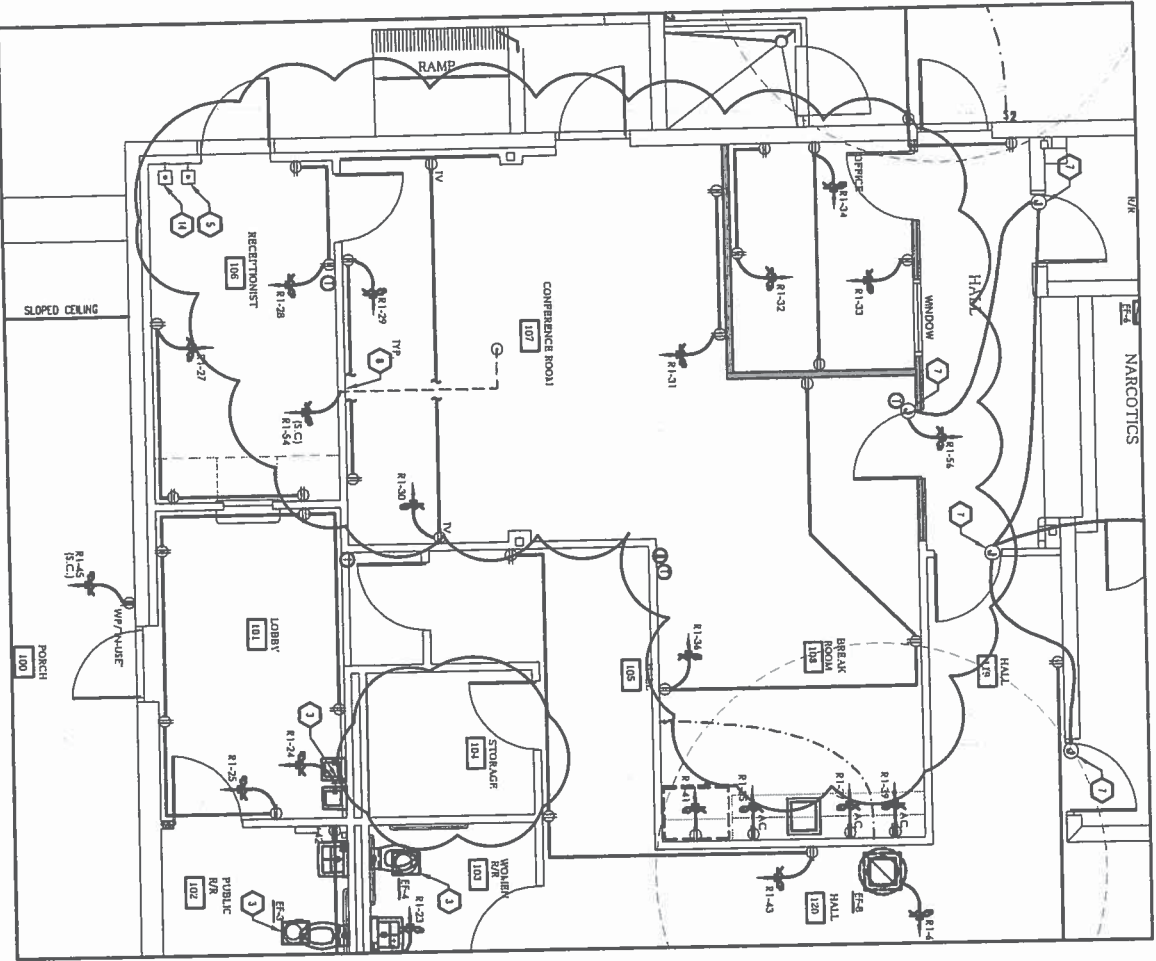
THIS SET OF PLANS
 IS TO BE USED IN CONNECTION WITH
 THE CONTRACT DOCUMENTS AND
 SPECIFICATIONS FOR THE PROJECT
 IDENTIFIED ABOVE. ANY
 CHANGES TO THE CONTRACT
 DOCUMENTS OR SPECIFICATIONS
 SHALL BE MADE BY ADDENDUM,
 OR BY AGREEMENT OF THE
 ARCHITECT AND THE CONTRACTOR.



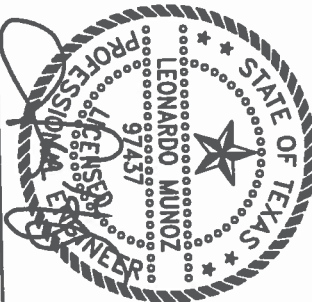
NORTH

SCALE: 1/8" = 1'-0"

ELECTRICAL POWER PLAN



TRINITY
MEP ENGINEERING
3535 Meritland Dr, Ste A, 17808, 1775886
936.872.0000 | 936.872.0011
Texas Registered Engineering Firm - F10022
Project number: 11201



REVISION
04/5/13

CONSTABLE'S OFFICE BUILDING
HIDALGO COUNTY PRECINCT No. 1

1900 JOE STEPHENS
WESLACO, TEXAS

Aldócer García Associates, Inc.

1333 E. Jasmine Ave.
McAllen, Texas 78501
Office: 956.618.2007
Fax: 956.618.2008
Web: WWW.AGADC.COM



E2.1

PROJECT #	11201
ISSUED	12/9/2012
DRAWN BY	TRINITY CAD
CHECKED BY	LM
FILE NAME	
SHEET	10 of 10
DESIGNED BY	
DATE	04-24-11
DESIGNER	GEORGE A. GARCIA

THIS SET OF PLANS
PREPARED BY TRINITY
MEP ENGINEERING
FOR THE ARCHITECT
AND CONTRACTOR
FOR THE PROJECT
SHOWN HEREON
AND THE CONTRACTOR
SHALL BE RESPONSIBLE
FOR THE PROTECTION
AND MAINTENANCE
OF THE SAME.



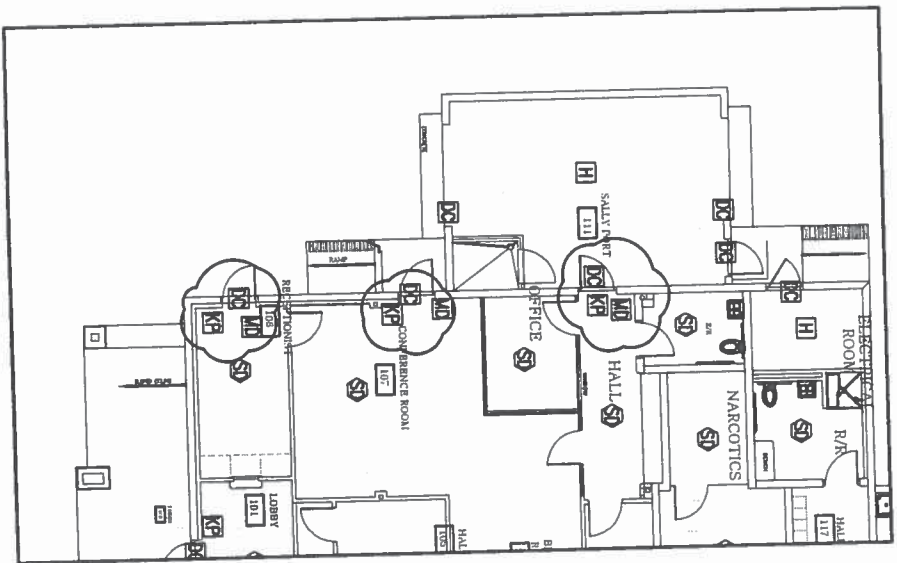
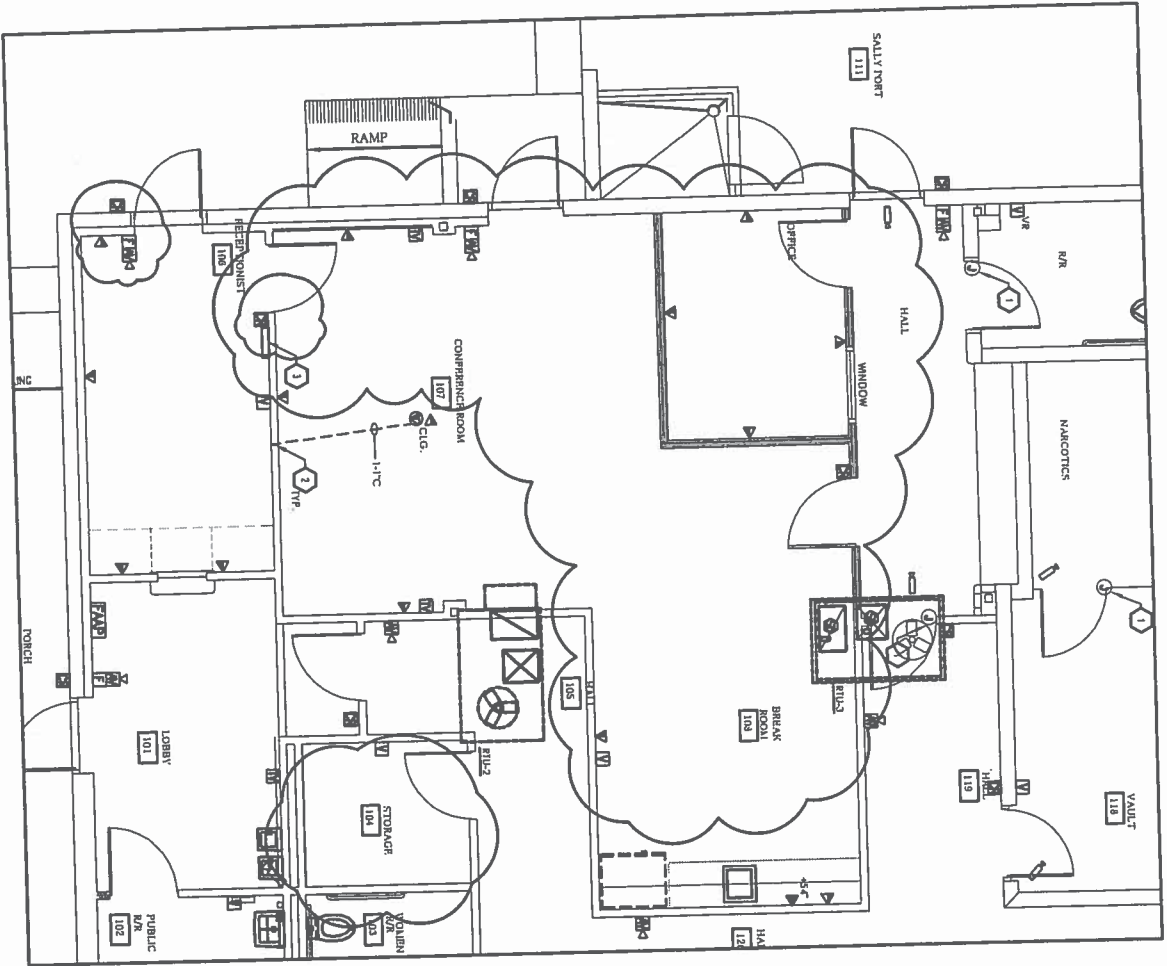
NORTH

SCALE: 1/8" = 1'-0"

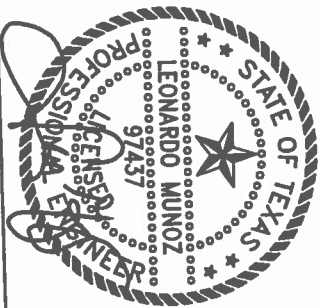
ELECTRICAL SPECIAL SYSTEM TRINITY

M.E.P. ENGINEERING

3533 Jaramore Ave. | Suite 111 | Houston, TX 77056
 Phone: 281-486-5147
 Fax: 281-486-5147
 www.alehenn.com | Copyright 2011
 Texas Registered Engineering Firm - F10082
 Project number: 11201



REVISION
04/5/13



CONSTABLE'S OFFICE BUILDING
 HIDALGO COUNTY PRECINCT No. 1

1900 JOE STEPHENS
 WESLACO, TEXAS

Aldócer García Associates, Inc.

1333 E Jaramore Ave.
 McAllen, Texas 78501
 Office 956 618 2007
 Fax 956 618 2008
 Web: WWW.AGADC.COM



E.3.1

PROJECT: A 11201
 ISSUED: 12/9/2012
 DRAWN BY: TRINITY CAD
 CHECKED BY: LJA
 FILE NAME:
 SHEET: 44 of 44 (100%)

DATE: 08-24-11
 CHECKED BY: LJA
 PROJECT: A 11201
 ISSUED: 12/9/2012
 DRAWN BY: TRINITY CAD
 CHECKED BY: LJA
 FILE NAME:
 SHEET: 44 of 44 (100%)