

COPY

Dear Purchasing Committee,

Wanted to thank you for the opportunity to bid on this project.

We are a small veteran owned company out of the state of Illinois

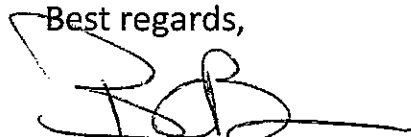
We are one of only two companies in the U.S. that has been making the Mobile Morgue Trailer for more than five years.

Our company and EMS Innovations.

We have worked hard to establish a great reputation in the industry, and have sold to units to over thirty different agencies nationally over the past 6+ years.

Please call if you have any questions.

Best regards,



Robert D. Harty, CEO

Request for Sealed Quote
for
Hidalgo County Health & Human Services
PURCHASE OF ONE (1) NEW MORGUE TRAILER

To: Sandra Montalvo, Buyer II
Hidalgo County Purchasing Department
2802 S. Bus. Hwy. 281
Edinburg, Texas 78539

In accordance with the Specifications, and subject to all laws and regulations of the United States and state and local laws, the undersigned bidder proposes and commits to furnish all labor, equipment, material, software and services as set forth in the documents hereinbefore mentioned. The undersigned participant further agrees, upon acceptance of its RFSQ, to execute a contract and/or Purchase Order issued by Hidalgo County for performing and completing the work described in the Specifications within the time stated and for the prices proposed in the documents attached hereto and made a part hereof.

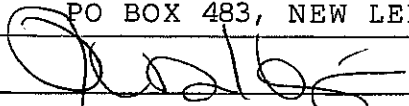
Participant acknowledges receipt of all of the pages of the documents referenced in the Invitation to Bid Checklist presented in connection with this procurement. Participant understands that Hidalgo County reserves the right to reject any or all RFSQ and further reserves the right to design the evaluation criteria to be used in selecting the lowest and best bid.

Participant agrees that this RFSQ shall be good and may not be withdrawn for a period of ninety (90) calendar days after the scheduled closing time for receiving RFSQs, as contained in the Specifications.

Respectfully submitted,

Bidder: HAZMAT MEDICAL ASSOCIATES, LTD

Address: PO BOX 483, NEW LENOX, IL..60451

By: 

Printed Name: ROBERT D. HARTY

Title: CEO

EXHIBIT "B"

QUOTE FORM

Hidalgo County Health & Human Services

Purchase of One (1) New Morgue Trailer

RFSQ NO.: 2013-120-05-09-SMA

NIGP COMMODITY CODE NO: 073-08

MOBILE MORGUE TRAILER		
QTY	Description	TOTAL PRICE
1	Mobile Morgue Trailer, New 2013 model year or newer or equal as specified in Exhibit A-Specification/Requirements	37,499.00

This is a one-time purchase of a refrigerated morgue trailer that includes generator, refrigeration unit, cadaver rack system, and warranties per the required specifications herein. (Refer to Exhibit "A" Specifications). Any and all additional fees should be included in QUOTE price.

BIDDER'S INFORMATION:

I/We the undersigned hereby certify that I/We am/are a duly authorized official of the company and have the authority to sign on behalf of the company and assure that all statements made in the bid are true. I/We agree to furnish and deliver the specified items/services at the prices stated herein, and have read, understand, and agree to the terms and conditions contained herein and on all of the attachments.

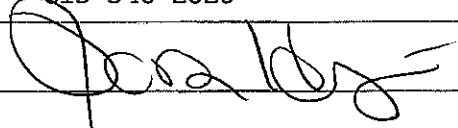
BIDDER/COMPANY NAME: HAZMAT MEDICAL ASSOCIATES, LTD

ADDRESS: PO BOX 483

CITY/STATE/ZIP CODE: NEW LENOX, ILLINOIS 60451

PHONE & FAX NO.'S: PH: 815-469-0008 FX: 815-469-0047

CELLULAR PHONE: 815-546-2020

AUTHORIZED SIGNATURE: 

PRINTED NAME: ROBERT D. HARTY

TITLE: CEO

EMAIL: bharty@hazmatmedical.com

**Hazmat Medical Associates – 2013 Mobile Morgue Trailer
Standard Features (8'.6" x 8' x 16' Model) with 220 refrig. unit.**

Frame

Fully Undercoated Steel Frame
1" Steel Tubing 16" on center, Walls and Ceiling
Spring Axles
EZ Lube Hubs
Electric Brakes- Tandems
Gel Cell Battery Breakaway Kit- Tandems
2-5/16" Coupler
Safety Chains & Hooks
2000# Zinc Plates Manual Jack
24" O/C Floor Cross members
16" OC 1" STEEL Roof Cross members
16" O/C 1" STEEL Wall Supports
ATP Interior Wheel boxes
Flat Floor Design
60" Tongue

Interior

Advantech Sub Floor

Skid Resistant, Washable Flooring

8 - 12 Volt LED Lights (4 each side – ceiling mounted)
2 – 4' Florescent lights (Center Ceiling Mounted)

Kemlite Ceiling Panels (washable)
Kemlite Wall Panels (washable)

**4" Thick Spray Foam Insulation R-28 Factor: All Walls, Floor and Ceiling,
no exceptions**

1 – Interior Receptacle with GFI

1 – AMP Panel with Circuit Breakers

Note: An additional safety feature designed to keep operators safe in case of accidental electrocution.

2 – 4' Florescent Light with Defusers

1 – Wall Switch for Fluorescent Light

1 – Dome Light

1- Skid Resistant Ramp Door

Exterior

1.5" Upper Rub Rail Trim

1.5" Lower Rub Rail Trim

.050 Aluminum Exterior

No Rivet / Screwless Exterior

Note: The smoother surface allows for better graphics and a better overall look to the trailer.

Color Matched Front Verticals

One-Piece Aluminum Roof

Gray Mod Wheels

7-Way Plug

24" High ATP Stone guard

DOT Approved Clearance Lights

(1) Set of DOT Approved Brake Lights

ST 235-80R/16 Bias Ply Tires

Miscellaneous

16 ft 18" Additional Height /Ft

-Actual finished inside height is 90"

1 Upgrade to Rear Ramp Door – with non-skid surface

-Ramp door is 36" wide x 84"

Note: 36" wide door opening allows for less cold air to escape when opened allowing for less work for the refrigeration unit and generator, and the remains to be kept at a more consistent temperature. Consistent body temperatures keep organs viable for donors.

-Actual door opening height from floor to inside header (84")

-Includes spring assist

1 - Spare Tire to Match

1- In-Floor Spare Tire Compartment

Note: In-floor tire compartments allow for maximum space inside the trailer.

1 - 2 Pair Wheel Chocks

1 – Pair of Drop Down Stabilizer Jacks

2 – 12 Volt Quartz Lights on Rear Header

1 – 12 Volt Wall Switch for Quartz Lights

1 – Inside GFI Receptacle

Inclusions

1 – Refrigeration Unit, Front Wall Mounted, Climate-Controlled, 8,250 BTU Copeland Condensing Unit -230v, with Larkin Evaporator Unit

NOTE: Warranty must be – 2 years parts and service and 5 year Replacement on compressor

1 – Diamond Plated Aluminum Refrigeration Unit Cover

1 – Electric Start 8000 Watt Generator 110/220

1 – Diamond Plated Aluminum Locking Generator Cover per OSHA Standards
Note: Unenclosed generators are a safety hazard per OSHA. All user manuals include warnings of electrocution if generator is run when wet.

20 – Stainless Steel Body Trays – Type 304- 18G, #4 finish

Note: Medical grade stainless steel repels blood borne pathogens and is therefore recommended by the mortuary industry unlike aluminum and plastic.

**5 – Wall Mounted Fold-down Racking Systems, 400 lbs- Capacity Each Tray
Each set of racks can hold up to 2,000 lbs.**

Note: Racks must be fixed permanently to the wall. Each rack folds down for use and up for additional space for storage when not in use. Each of the steel body trays is custom made to fit perfectly into the racks to prevent movement during transport and then easily come out at their destination for body relocation.

2 – 50' Heavy Duty Shoreline

1 – 6' Heavy Duty Cord for Generator

WARRANTIES:

5 YEAR – STRUCTURAL WARRANTY

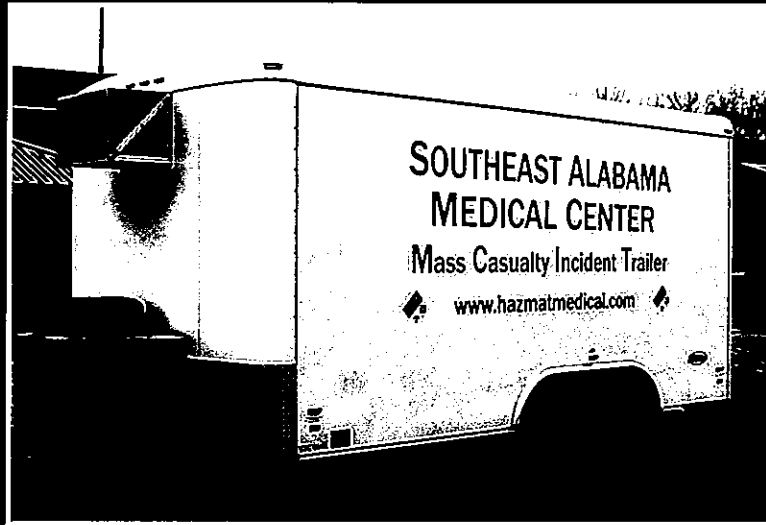
2 YEAR – PARTS AND SERVICE – REFRIG. UNIT AND GENERATOR

5 YEAR – REPLACEMENT ON REFRIGERATOR COMPRESSOR UNIT

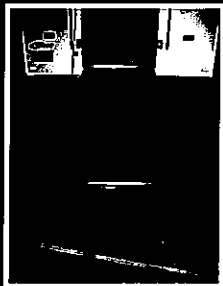


MOBILE MORGUE TRAILER (MMT)

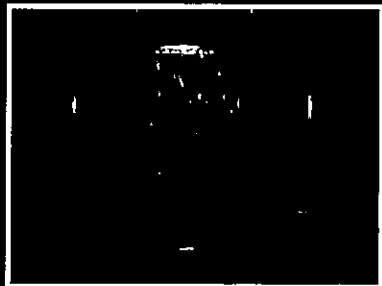
HAZMAT MEDICAL INTRODUCES THE NATION'S LEADING



"HIGHEST QUALITY" MOBILE MORGUE TRAILER!



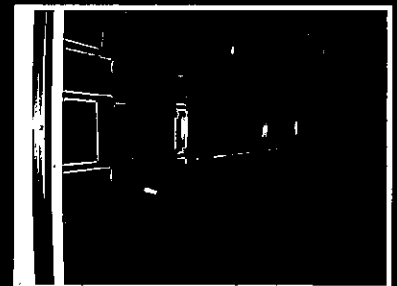
Ramp Door



Fold-Up Racks / Exit Door



Front Wall / Refrig. Unit



Racks Down with Tray

BUILT "TOUGH" BY CERTIFIED ISO - MEDICAL TRAILER MANUFACTURER

INCLUDES:

- ELECTRIC GENERATOR + SHORE LINE CONNECTION
- 20-STAINLESS STEEL BODY TRAYS
- FRONT WALL MOUNTED REFRIG (BETTER CLEARANCE)
- 8' X 8' X 16' TRAILER - DUAL AXLE
- 20 FATALITY CAPACITY
- FOLD DOWN RACKS
- 2 - 50' SHORELINES



WWW.HAZMATMEDICAL.COM
1-800-462-4002

HAZMAT MEDICAL IS A PARAMEDIC / FIREFIGHTER,
VIETNAM ERA VETERAN OWNED BUSINESS

SEE COMPARISON CHART ON REVERSE SIDE ➔

