

COUNTY OF HIDALGO
HEALTH DEPT
PHARR CLINIC
1304 S 25TH AVE
EDINBURG TX 78542 - 7205

Page 1 of 2
Account Number 956 787-1531 073 5
Billing Date Apr 9, 2013

Web Site att.com



Monthly Statement

INVOICE RECEIVED BY:
Jeannette Palacios DATE *4/19/13*
GOODS/SERVICES RECEIVED BY:
Palacios DATE *4/9-5/8/13*
3 -1100-441-00-340-003 -0- *531*
PYMT AMOUNTS *428.81* PO# *688425*
APPROVED BY: *[Signature]*

Bill-At-A-Glance

Previous Bill	858.12
Payment - Thank You!	858.12CR
Adjustments	.00
Balance	.00
Current Charges	428.81

Total Amount Due **\$428.81**

Amount Due in Full By May 2, 2013

Detail of Payments and Adjustments

Item No.	Date	Description	Adjustments	Payments
1.	3-18	Payment		429.06
2.	4-05	Payment		429.06
Totals				858.12

Plans and Services

Monthly Service (Apr 9 thru May 8) *(2)*

Item No.	Description	Amount
Charges for 956 787-1531		
3.	Monthly Charges	261.56
4.	Basic Local Service - Business	22.36
Total Charges for 956 787-1531		283.92
Charges for 956 702-4389		
5.	Monthly Charges	1.30
6.	Basic Local Service - Business	20.85
Total Charges for 956 702-4389		22.15
Charges for 956 781-1176		
7.	Monthly Charges	1.30
8.	Basic Local Service - Business	20.85
Total Charges for 956 781-1176		22.15
Charges for 956 783-6310		
9.	Monthly Charges	1.30
10.	Basic Local Service - Business	20.85
Total Charges for 956 783-6310		22.15
Charges for 956 787-8031		
11.	Monthly Charges	4.11
12.	Basic Local Service - Business	22.36
Total Charges for 956 787-8031		26.47
Total Monthly Service		376.84

Billing Summary

Billing Questions? Visit att.com/billing Page

Plans and Services	Page	Amount
1 800 559-7928	1	428.81
Payment Arrangements:		
1 800 924-1743		
Service Changes:		
1 800 321-2000		
Repair Services:		
1 800 286-8313		
Total Current Charges		428.81

RECEIVED
Hidalgo County Health
& Human Services Department
APR 19 2013
1304 S. 25th Ave.
Edinburg, Texas 78542

*Received By County Auditor
5/7/2013*

News You Can Use Summary

- PREVENT DISCONNECT
 - LONG DIST. PROVIDERS
- See "News You Can Use" for additional information

Additions and Changes to Service

This section of your bill reflects charges and credits resulting from account activity.

Item No.	Description	Quantity	Monthly Rate	Amount Billed
Activity on Apr 1, 2013 (Monthly Charges are Prorated from Apr 1, 2013 through Apr 8, 2013)				
13.	Federal Universal Service Fee	2		.02CR
14.	Federal Universal Service Fee	1		.01CR
15.	Federal Universal Service Fee	1		.01CR

Local Services provided by AT&T Arkansas, AT&T Kansas, AT&T Missouri, AT&T Oklahoma, or AT&T Texas based upon the service address location.

GO GREEN - Enroll in paperless billing.

Printed on Recyclable Paper



COUNTY OF HIDALGO
 HEALTH DEPT
 PHARR CLINIC
 1304 S 25TH AVE
 EDINBURG TX 78542 - 7205

Page 2 of 2
 Account Number 956 787-1531 073 .5
 Billing Date Apr 9, 2013

INVOICE RECEIVED BY: _____
 DATE: _____
 GOODS/SERVICES RECEIVED BY: _____
 DATE: _____
 1100-447-00-340

Plans and Services

Additions and Changes to Service - Continued

Item No.	Description	Quantity	Monthly Rate	Amount Billed
1.	Federal Universal Service Fee	1		.01CR
Total Additions and Changes to Service				.05CR

Surcharges and Other Fees

2.	Federal Subscriber Line Charge			27.45
3.	911 Fee			2.80
4.	State Cost-Recovery Fee			2.07
5.	Federal Universal Service Fee			4.75
6.	Municipal right-of-way Fee			14.95
Total Surcharges and Other Fees				52.02

Taxes

7.	Federal			.00
8.	State and Local			.00
Total Taxes				.00

Total Plans and Services 428.81

Amount Subject to Sales Tax: 2.07

News You Can Use

PREVENT DISCONNECT

Thank you for being a valued customer. Please be aware that all charges must be paid each month to keep your account current and prevent collection activities. We are required to inform you that certain charges such as your telephone line, and fees and surcharges **MUST** be paid in order to prevent interruption of basic local service. These charges are already included in the Total Amount Due and are \$426.01. Also, neglecting payment for other charges, such as long distance, voice mail, InLine®, wireless, and Internet may result in those services being interrupted.

LONG DIST. PROVIDERS

Our records indicate that you have selected AT&T Corp. or a company that resells their services as your primary local toll carrier and AT&T Corp. or a company that resells their services as your primary long distance carrier. Please contact us if this does not agree with your records.

Terms and Conditions

CARRIER QUESTIONS

You may contact the Public Utility Commission of Texas, Office of Customer Protection, P.O. Box 13326, Austin, TX 78711-3326, 1-512-936-7120 or toll-free in Texas at 1-888-782-8477 if you believe the local exchange provider or the interexchange carrier on your bill are not correct or if there are unauthorized charges on your bill. Hearing and speech impaired customers with text telephones (TTY) may call 1-512-936-7136. When corresponding by mail, include your complaint and copies of the phone bills. Please contact AT&T Texas to switch your service back to the carrier of your choice.

For a complete listing of Terms and Conditions, please refer to:

- The inside of the AT&T White Pages directory, or
- Visit us on the web at att.com/terms

Handwritten note: 428.81

Handwritten note: Received by County Health Dept 2/11/2013



HIDALGO CO HEALTH DEPT
MCALLEN CLINIC
1304 S 25TH AVE
EDINBURG TX 78542 - 7205

Page 1 of 2
Account Number 956 682-6155 728 4
Billing Date Apr 7, 2013

Web Site att.com



Monthly Statement

INVOICE RECEIVED BY: Seaneth Delacruz DATE 4/15/13
GOODS/SERVICES RECEIVED BY: Delacruz DATE 4/17-5/6/13
3-1100-441-00-340-003-0-531
PYMT AMOUNTS 259.53 PO# 688425
APPROVED BY: J.C. 4/18/13

Bill-At-A-Glance

Previous Bill	520.62
Payment - Thank You!	520.62CR
Adjustments	.00
Balance	.00
Current Charges	259.53
Total Amount Due	\$259.53
Amount Due in Full By	May 1, 2013

Detail of Payments and Adjustments

Item No.	Date	Description	Adjustments	Payments
1.	3-16	Payment		260.31
2.	4-05	Payment		260.31
Totals				520.62

Plans and Services

Item No.	Description	Amount
Monthly Service - Apr 7 thru May 6		
Charges for 956 682-6155		
3.	Monthly Charges	1.56
4.	Basic Local Service - Business	22.36
Total Charges for 956 682-6155		23.92
Charges for 956 618-5979		
5.	Monthly Charges	1.30
6.	Basic Local Service - Business	20.85
Total Charges for 956 618-5979		22.15
Charges for 956 630-9422		
7.	Monthly Charges	1.30
8.	Basic Local Service - Business	20.85
Total Charges for 956 630-9422		22.15
Charges for 956 631-9094		
9.	Monthly Charges	1.30
10.	Basic Local Service - Business	20.85
Total Charges for 956 631-9094		22.15
Charges for 956 682-6156		
11.	Monthly Charges	1.30
12.	Basic Local Service - Business	22.36
Total Charges for 956 682-6156		23.66
Charges for 956 682-6157		
13.	Monthly Charges	4.11
14.	Basic Local Service - Business	22.36
Total Charges for 956 682-6157		26.47
Charges for 956 682-6173		
15.	Monthly Charges	1.30
16.	Basic Local Service - Business	20.85
Total Charges for 956 682-6173		22.15
Charges for 956 682-6174		
17.	Monthly Charges	1.30

Billing Summary

Billing Questions? Visit att.com/billing	Page
Plans and Services	1 259.53
1 800 770-2260	
Payment Arrangements:	
1 800 924-1743	
Service Changes:	
1 800 321-2000	
Repair Services:	
1 800 286-8313	
Total Current Charges	259.53

RECEIVED
Hidalgo County Health
& Human Services Department
APR 15 2013
1304 S. 25th Ave.
Edinburg, Texas 78542

News You Can Use Summary

- PREVENT DISCONNECT
 - LONG DIST. PROVIDERS
- See "News You Can Use" for additional information

Local Services provided by AT&T Arkansas, AT&T Kansas, AT&T Missouri, AT&T Oklahoma, or AT&T Texas based upon the service address location.

GO GREEN - Enroll in paperless billing.

Printed on Recyclable Paper

Return bottom portion with your check in the enclosed envelope.



HIDALGO CO HEALTH DEPT
 MCALLEN CLINIC
 1304 S 25TH AVE
 EDINBURG TX 78542 - 7205

Page 2 of 2
 Account Number 956 682-6155 728 4
 Billing Date Apr 7, 2013

Plans and Services

Monthly Service - Apr 7 thru May 6 - Continued

1. Basic Local Service - Business	20.85
Total Charges for 956 682-6174	22.15
Total Monthly Service	184.80

Additions and Changes to Service

This section of your bill reflects charges and credits resulting from account activity.

Item No.	Description	Quantity	Monthly Rate	Amount Billed
Activity on Apr 1, 2013 (Monthly Charges are Prorated from Apr 1, 2013 through Apr 6, 2013)				
2.	Federal Universal Service Fee	3		.02CR
3.	Federal Universal Service Fee	1		.01CR
4.	Federal Universal Service Fee	1		.01CR
5.	Federal Universal Service Fee	1		.01CR
6.	Federal Universal Service Fee	1		.01CR
7.	Federal Universal Service Fee	1		.01CR
Total Additions and Changes to Service				.07CR

Surcharges and Other Fees

8. Federal Subscriber Line Charge	43.92
9. 911 Fee	4.48
10. Federal Universal Service Fee	7.60
11. Municipal right-of-way Fee	18.80
Total Surcharges and Other Fees	74.80

Taxes

12. Federal	.00
13. State and Local	.00
Total Taxes	.00

Total Plans and Services 259.53

News You Can Use

PREVENT DISCONNECT

Thank you for being a valued customer. Please be aware that all charges must be paid each month to keep your account current and prevent collection activities. We are required to inform you that certain charges such as your telephone line, and fees and surcharges **MUST** be paid in order to prevent interruption of basic local service. These charges are already included in the Total Amount Due and are \$255.05. Also, neglecting payment for other charges, such as long distance, voice mail, InLine®, wireless, and Internet may result in those services being interrupted.

LONG DIST. PROVIDERS

Our records indicate that you have selected AT&T Corp. or a company that resells their services as your primary local toll carrier and AT&T Corp. or a company that resells their services as your primary long distance carrier. Please contact us if this does not agree with your records.

Terms and Conditions

CARRIER QUESTIONS

You may contact the Public Utility Commission of Texas, Office of Customer Protection, P.O. Box 13326, Austin, TX 78711-3326, 1-512-936-7120 or toll-free in Texas at 1-888-782-8477 if you believe the local exchange provider or the interexchange carrier on your bill are not correct or if there are unauthorized charges on your bill. Hearing and speech impaired customers with text telephones (TTY) may call 1-512-936-7136. When corresponding by mail, include your complaint and copies of the phone bills. Please contact AT&T Texas to switch your service back to the carrier of your choice.

For a complete listing of Terms and Conditions, please refer to:
 - The inside of the AT&T White Pages directory, or
 - Visit us on the web at att.com/terms



HIDALGO CO HEALTH DEPT
MCALLEN CLINIC
1304 S 25TH AVE
EDINBURG TX 78542 - 7205

Page 1 of 2
Account Number 956 682-6155 728 4
Billing Date May 7, 2013
Web Site att.com



at&t

Monthly Statement

Bill-At-A-Glance

Previous Bill	259.53
Payment	.00
Adjustments	.00
Past Due - Please Pay Immediately	259.53
Current Charges	259.60

Total Amount Due \$519.13

Current Charges Due in Full by May 30, 2013

Billing Summary

Billing Questions? Visit att.com/billing Page

Plans and Services	1	259.60
1 800 770-2260		
Payment Arrangements:		
1 800 924-1743		
Service Changes:		
1 800 321-2000		
Repair Services:		
1 800 286-8313		
Total Current Charges		259.60

RECEIVED

Hidalgo County Health
& Human Services Department

MAY 17 2013

1304 S. 25th Ave.
Edinburg, Texas 78542

Plans and Services

Monthly Service - May 7 thru Jun 6

Charges for 956 682-6155

1. Monthly Charges	1.56
2. Basic Local Service - Business	22.36
Total Charges for 956 682-6155	23.92

Charges for 956 618-5979

3. Monthly Charges	1.30
4. Basic Local Service - Business	20.85
Total Charges for 956 618-5979	22.15

Charges for 956 630-9422

5. Monthly Charges	1.30
6. Basic Local Service - Business	20.85
Total Charges for 956 630-9422	22.15

Charges for 956 631-9094

7. Monthly Charges	1.30
8. Basic Local Service - Business	20.85
Total Charges for 956 631-9094	22.15

Charges for 956 682-6156

9. Monthly Charges	1.30
10. Basic Local Service - Business	22.36
Total Charges for 956 682-6156	23.66

Charges for 956 682-6157

11. Monthly Charges	4.11
12. Basic Local Service - Business	22.36
Total Charges for 956 682-6157	26.47

Charges for 956 682-6173

13. Monthly Charges	1.30
14. Basic Local Service - Business	20.85
Total Charges for 956 682-6173	22.15

Charges for 956 682-6174

15. Monthly Charges	1.30
16. Basic Local Service - Business	20.85
Total Charges for 956 682-6174	22.15

Total Monthly Service 184.80

Surcharges and Other Fees

17. Federal Subscriber Line Charge	43.92
18. 911 Fee	4.48
19. Federal Universal Service Fee	7.60
20. Municipal right-of-way Fee	18.80
Total Surcharges and Other Fees	74.80

News You Can Use Summary

- PREVENT DISCONNECT
 - LONG DIST. PROVIDERS
 - IMPORTANT NOTICE
 - NOTICE OF SETTLEMENT
- See "News You Can Use" for additional information

Local Services provided by AT&T Arkansas, AT&T Kansas, AT&T Missouri, AT&T Oklahoma, or AT&T Texas based upon the service address location.

GO GREEN - Enroll in paperless billing.



Printed on Recyclable Paper

Return bottom portion with your check in the enclosed envelope.



HIDALGO CO HEALTH DEPT
 MCALLEN CLINIC
 1304 S 25TH AVE
 EDINBURG TX 78542 - 7205

Page 2 of 2
 Account Number 956 682-6155 728 4
 Billing Date May 7, 2013

Plans and Services

Taxes	
1. Federal	.00
2. State and Local	.00
Total Taxes	.00
Total Plans and Services	259.60

News You Can Use

PREVENT DISCONNECT

Thank you for being a valued customer. Please be aware that all charges must be paid each month to keep your account current and prevent collection activities. We are required to inform you that certain charges such as your telephone line, and fees and surcharges **MUST** be paid in order to prevent interruption of basic local service. These charges are already included in the Total Amount Due and are \$510.17. Also, neglecting payment for other charges, such as long distance, voice mail, InLine®, wireless, and Internet may result in those services being interrupted.

LONG DIST. PROVIDERS

Our records indicate that you have selected AT&T Corp. or a company that resells their services as your primary local toll carrier and AT&T Corp. or a company that resells their services as your primary long distance carrier. Please contact us if this does not agree with your records.

IMPORTANT NOTICE

INFORMATIONAL BULLETIN REGARDING THIRD-PARTY BILLING

AT&T allows third-party billing for traditional telecommunications providers (such as long-distance, operator services and directory assistance), and AT&T's own affiliates and marketing allies. AT&T takes immediate action to help customers who contact us and report that they may have been billed for unauthorized third-party charges. To dispute a charge, we encourage customers to first deal directly with the third party that originated the charge, whose name and toll-free telephone number are printed on the same bill page as the charge in question. Often, the problem can be resolved with a single telephone call. All customers who call us to report cramming complaints will be issued credits and will not be required to pay AT&T for the disputed charges. (Credits generally appear on customers' bills within one or two months.)

NOTICE OF SETTLEMENT

If your postal mailed bill envelope contains a yellow Class Action Settlement Notice, or if your e-bill contains an insert entitled "Third-Party Billing Class Action - Notice & Forms", that means that AT&T's records indicate that in the past you were charged for Third Party Charges that are the subject of a Class Action Settlement. You should read the Notice carefully to find out about obtaining a settlement payment if you did not authorize the charges. If you have any questions about the Settlement, go to www.ATTthirdpartybillingsettlement.com, email info@ATTthirdpartybillingsettlement.com, or call 1.866.242.0603.

Terms and Conditions

CARRIER QUESTIONS

You may contact the Public Utility Commission of Texas, Office of Customer Protection, P.O. Box 13326, Austin, TX 78711-3326, 1-512-936-7120 or toll-free in Texas at 1-888-782-8477 if you believe the local exchange provider or the interexchange carrier on your bill are not correct or if there are unauthorized charges on your bill. Hearing and speech impaired customers with text telephones (TTY) may call 1-512-936-7136. When corresponding by mail, include your complaint and copies of the phone bills. Please contact AT&T Texas to switch your service back to the carrier of your choice.

For a complete listing of Terms and Conditions, please refer to:

- The inside of the AT&T White Pages directory, or
- Visit us on the web at att.com/terms



HIDALGO COUNTY
PULMONARY CLINIC
1304 S 25TH AVE
EDINBURG TX 78542 - 7205

Page 1 of 2
Account Number 956 387-0118 710 9
Billing Date Apr 15, 2013

Web Site att.com



at&t

Monthly Statement

INVOICE RECEIVED BY:
Jeanette Palacios DATE 4/24/13
GOODS/SERVICES RECEIVED BY:
Palacios DATE 4/15-5/14/13
3 -1100-441-00-340-602-0-531
PYMT AMOUNTS 152.80 PO# 488425
APPROVED BY: MC 5/8/13

Bill-At-A-Glance

Previous Bill	152.92
Payment Received 4-13 Thank you!	152.92CR
Adjustments	.00
Balance	.00
Current Charges	152.80
Total Amount Due	\$152.80
Amount Due in Full By	May 9, 2013

Plans and Services

Monthly Service - Apr 15 thru May 14

Charges for 956 387-0118

1. Monthly Charges	67.30
--------------------	-------

Charges for 956 387-0120

2. Monthly Charges	67.30
--------------------	-------

Total Monthly Service 134.60

Additions and Changes to Service

This section of your bill reflects charges and credits resulting from account activity.

Item	Monthly Rate	Amount Billed
Activity on Apr 1, 2013		
(Monthly Charges are Prorated from Apr 1, 2013 through Apr 14, 2013)		
3. Federal Universal Service Fee	2	.04CR

Billing Summary

Billing Questions? Visit att.com/billing Page

Plans and Services	1	152.80
1 800 770-2260		
Payment Arrangements:		
1 800 924-1743		
Service Changes:		
1 800 321-2000		
Repair Services:		
1 800 286-8313		
Total Current Charges		152.80

Surcharges and Other Fees

4. Federal Subscriber Line Charge	10.98
5. 911 Fee	1.12
6. Federal Universal Service Fee	1.90
7. Municipal right-of-way Fee	4.24
Total Surcharges and Other Fees	18.24

Taxes

8. Federal	.00
9. State and Local	.00
Total Taxes	.00

Total Plans and Services 152.80

RECEIVED
Hidalgo County Health
Human Services Department
APR 24 2013
1304 S. 25th Ave.
Edinburg, Texas 78542

News You Can Use Summary

- PREVENT DISCONNECT
 - LONG DIST. PROVIDERS
- See "News You Can Use" for additional information

News You Can Use

PREVENT DISCONNECT

Thank you for being a valued customer. Please be aware that all charges must be paid each month to keep your account current and prevent collection activities. We are required to inform you that certain charges such as your telephone line, and fees and surcharges MUST be paid in order to prevent interruption of basic local service. These charges are already included in the Total Amount Due and are \$151.68. Also, neglecting payment for other charges, such as long distance, voice mail, InLine®, wireless, and Internet may result in those services being interrupted.

Local Services provided by AT&T Arkansas, AT&T Kansas, AT&T Missouri, AT&T Oklahoma, or AT&T Texas based upon the service address location.

GO GREEN - Enroll in paperless billing. Printed on Recyclable Paper

Return bottom portion with your check in the enclosed envelope.



HIDALGO COUNTY
 PULMONARY CLINIC
 1304 S 25TH AVE
 EDINBURG TX 78542 - 7205

Page 2 of 2
 Account Number 956 387-0118 710 9
 Billing Date Apr 15, 2013

News You Can Use

LONG DIST. PROVIDERS

Our records indicate that you have selected MCI or a company that resells their services as your primary local toll carrier and MCI or a company that resells their services as your primary long distance carrier. Please contact us if this does not agree with your records.

Terms and Conditions

CARRIER QUESTIONS

You may contact the Public Utility Commission of Texas, Office of Customer Protection, P.O. Box 13326, Austin, TX 78711-3326, 1-512-936-7120 or toll-free in Texas at 1-888-782-8477 if you believe the local exchange provider or the interexchange carrier on your bill are not correct or if there are unauthorized charges on your bill. Hearing and speech impaired customers with text telephones (TTY) may call 1-512-936-7136. When corresponding by mail, include your complaint and copies of the phone bills. Please contact AT&T Texas to switch your service back to the carrier of your choice.

For a complete listing of Terms and Conditions, please refer to:

- The inside of the AT&T White Pages directory, or
- Visit us on the web at att.com/terms



HIDALGO COUNTY
PULMONARY CLINIC
1304 S 25TH AVE
EDINBURG TX 78542 - 7205

Page 1 of 2
Account Number 956 387-0118 710 9
Billing Date May 15, 2013
Web Site att.com



Monthly Statement

Bill-At-A-Glance

Previous Bill	152.80
Payment	.00
Adjustments	.00
Past Due - Please Pay Immediately	152.80
Current Charges	152.84

Total Amount Due \$305.64

Current Charges Due in Full by Jun 7, 2013

Billing Summary

Billing Questions? Visit att.com/billing Page

Plans and Services	1	152.84
1 800 770-2260		
Payment Arrangements:		
1 800 924-1743		
Service Changes:		
1 800 321-2000		
Repair Services:		
1 800 286-8313		
Total Current Charges		152.84

RECEIVED
Hidalgo County Health
& Human Services Department
MAY 24 2013
1304 S. 25th Ave.
Edinburg, Texas 78542

Plans and Services

Monthly Service - May 15 thru Jun 14

Charges for 956 387-0118

1. Monthly Charges 67.30

Charges for 956 387-0120

2. Monthly Charges 67.30

Total Monthly Service 134.60

Surcharges and Other Fees

3. Federal Subscriber Line Charge 10.98

4. 911 Fee 1.12

5. Federal Universal Service Fee 1.90

6. Municipal right-of-way Fee 4.24

Total Surcharges and Other Fees 18.24

Taxes

7. Federal .00

8. State and Local .00

Total Taxes .00

Total Plans and Services 152.84

News You Can Use

PREVENT DISCONNECT

Thank you for being a valued customer. Please be aware that all charges must be paid each month to keep your account current and prevent collection activities. We are required to inform you that certain charges such as your telephone line, and fees and surcharges MUST be paid in order to prevent interruption of basic local service. These charges are already included in the Total Amount Due and are \$303.40. Also, neglecting payment for other charges, such as long distance, voice mail, InLine®, wireless, and Internet may result in those services being interrupted.

LONG DIST. PROVIDERS

Our records indicate that you have selected MCI or a company that resells their services as your primary local toll carrier and MCI or a company that resells their services as your primary long distance carrier. Please contact us if this does not agree with your records.

News You Can Use Summary

- PREVENT DISCONNECT
- LONG DIST. PROVIDERS
- IMPORTANT NOTICE
- NOTICE OF SETTLEMENT

See "News You Can Use" for additional information

Return bottom portion with your check in the enclosed envelope.

Local Services provided by AT&T Arkansas, AT&T Kansas, AT&T Missouri, AT&T Oklahoma, or AT&T Texas based upon the service address location.

GO GREEN - Enroll in paperless billing.

Printed on Recyclable Paper



HIDALGO COUNTY
 PULMONARY CLINIC
 1304 S 25TH AVE
 EDINBURG TX 78542 - 7205

Page 2 of 2
 Account Number 956 387-0118 710 9
 Billing Date May 15, 2013

News You Can Use

IMPORTANT NOTICE

INFORMATIONAL BULLETIN REGARDING THIRD-PARTY BILLING

AT&T allows third-party billing for traditional telecommunications providers (such as long-distance, operator services and directory assistance), and AT&T's own affiliates and marketing allies. AT&T takes immediate action to help customers who contact us and report that they may have been billed for unauthorized third-party charges. To dispute a charge, we encourage customers to first deal directly with the third party that originated the charge, whose name and toll-free telephone number are printed on the same bill page as the charge in question. Often, the problem can be resolved with a single telephone call. All customers who call us to report cramming complaints will be issued credits and will not be required to pay AT&T for the disputed charges. (Credits generally appear on customers' bills within one or two months.)

NOTICE OF SETTLEMENT

If your postal mailed bill envelope contains a yellow Class Action Settlement Notice, or if your e-bill contains an insert entitled "Third-Party Billing Class Action - Notice & Forms", that means that AT&T's records indicate that in the past you were charged for Third Party Charges that are the subject of a Class Action Settlement. You should read the Notice carefully to find out about obtaining a settlement payment if you did not authorize the charges. If you have any questions about the Settlement, go to www.ATTthirdpartybillingsettlement.com, email info@ATTthirdpartybillingsettlement.com, or call 1.866.242.0603.

Terms and Conditions

CARRIER QUESTIONS

You may contact the Public Utility Commission of Texas, Office of Customer Protection, P.O. Box 13326, Austin, TX 78711-3326, 1-512-936-7120 or toll-free in Texas at 1-888-782-8477 if you believe the local exchange provider or the interexchange carrier on your bill are not correct or if there are unauthorized charges on your bill. Hearing and speech impaired customers with text telephones (TTY) may call 1-512-936-7136. When corresponding by mail, include your complaint and copies of the phone bills. Please contact AT&T Texas to switch your service back to the carrier of your choice.

For a complete listing of Terms and Conditions, please refer to:

- The inside of the AT&T White Pages directory, or
- Visit us on the web at att.com/terms



HIDALGO CNTY HLTH DEPT
MISSION CLINIC
1304 S 25TH AVE
EDINBURG TX 78542 - 7205

Page 1 of 2
Account Number 956 585-2461 751 2
Billing Date Apr 17, 2013

Web Site att.com



at&t

Monthly Statement

INVOICE RECEIVED BY:	
Jeanette Palacios	DATE 4/26/13
GOODS/SERVICES RECEIVED BY:	
Palacios	DATE 4/17-5/16/13
3-1100-441-00-340-003 -0-531	
PYMT AMOUNTS 177.85	PO# 688425
APPROVED BY: [Signature] 5/8/13	

Bill-At-A-Glance

Previous Bill	178.21
Payment Received 4-13 Thank you!	178.21CR
Adjustments	.00
Balance	.00
Current Charges	177.85
Total Amount Due	\$177.85
Amount Due in Full By	May 10, 2013

Plans and Services

Monthly Service - Apr 17 thru May 16

Charges for 956 585-2461

1. Monthly Charges	4.37
2. Basic Local Service - Business	20.85
Total Charges for 956 585-2461	25.22

Charges for 956 519-2871

3. Monthly Charges	1.30
4. Basic Local Service - Business	20.85
Total Charges for 956 519-2871	22.15

Charges for 956 584-7144

5. Monthly Charges	1.30
6. Basic Local Service - Business	20.85
Total Charges for 956 584-7144	22.15

Charges for 956 585-2742

7. Monthly Charges	1.30
8. Basic Local Service - Business	20.85
Total Charges for 956 585-2742	22.15

Charges for 956 585-6731

9. Monthly Charges	1.30
10. Basic Local Service - Business	20.85
Total Charges for 956 585-6731	22.15

Charges for 956 585-7380

11. Monthly Charges	1.30
12. Basic Local Service - Business	20.85
Total Charges for 956 585-7380	22.15

Total Monthly Service

135.97

Additions and Changes to Service

This section of your bill reflects charges and credits resulting from account activity.

Item No.	Description	Quantity	Monthly Rate	Amount Billed
Activity on Apr 1, 2013 (Monthly Charges are Prorated from Apr 1, 2013 through Apr 16, 2013)				
13.	Federal Universal Service Fee	1		.02CR
14.	Federal Universal Service Fee	1		.02CR
15.	Federal Universal Service Fee	1		.02CR
16.	Federal Universal Service Fee	1		.02CR
17.	Federal Universal Service Fee	1		.02CR
18.	Federal Universal Service Fee	1		.02CR
Total Additions and Changes to Service				.12CR

Billing Summary

Billing Questions? Visit att.com/billing Page

Plans and Services	1	177.85
1 800 770-2260		
Payment Arrangements:		
1 800 924-1743		
Service Changes:		
1 800 321-2000		
Repair Services:		
1 800 286-8313		
Total Current Charges		177.85

RECEIVED
Hidalgo County Health
& Human Services Department
APR 26 2013
1304 S. 25th Ave.
Edinburg, Texas 78542

News You Can Use Summary

- PREVENT DISCONNECT
 - LONG DIST. PROVIDERS
- See "News You Can Use" for additional information

Return bottom portion with your check in the enclosed envelope.

Local Services provided by AT&T Arkansas, AT&T Kansas, AT&T Missouri, AT&T Oklahoma, or AT&T Texas based upon the service address location.

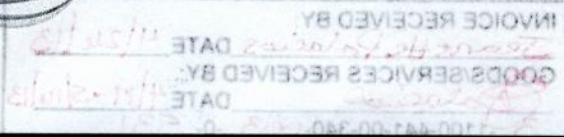
GO GREEN - Enroll in paperless billing.

Printed on Recyclable Paper



HIDALGO CNTY HLTH DEPT
MISSION CLINIC
1304 S 25TH AVE
EDINBURG TX 78542 - 7205

Page 2 of 2
Account Number 956 585-2461 751 2
Billing Date Apr 17, 2013



Plans and Services

Surcharges and Other Fees

1. Federal Subscriber Line Charge	32.94
2. 911 Fee	3.36
3. Federal Universal Service Fee	5.70
Total Surcharges and Other Fees	42.00

Taxes

4. Federal	.00
5. State and Local	.00
Total Taxes	.00

Total Plans and Services 177.85

News You Can Use

PREVENT DISCONNECT

Thank you for being a valued customer. Please be aware that all charges must be paid each month to keep your account current and prevent collection activities. We are required to inform you that certain charges such as your telephone line, and fees and surcharges MUST be paid in order to prevent interruption of basic local service. These charges are already included in the Total Amount Due and are \$174.49. Also, neglecting payment for other charges, such as long distance, voice mail, InLine®, wireless, and Internet may result in those services being interrupted.

LONG DIST. PROVIDERS

Our records indicate that you have selected AT&T Corp. or a company that resells their services as your primary local toll carrier and AT&T Corp. or a company that resells their services as your primary long distance carrier. Please contact us if this does not agree with your records.

Terms and Conditions

CARRIER QUESTIONS

You may contact the Public Utility Commission of Texas, Office of Customer Protection, P.O. Box 13326, Austin, TX 78711-3326, 1-512-936-7120 or toll-free in Texas at 1-888-782-8477 if you believe the local exchange provider or the interexchange carrier on your bill are not correct or if there are unauthorized charges on your bill. Hearing and speech impaired customers with text telephones (TTY) may call 1-512-936-7136. When corresponding by mail, include your complaint and copies of the phone bills. Please contact AT&T Texas to switch your service back to the carrier of your choice.

For a complete listing of Terms and Conditions, please refer to:

- The inside of the AT&T White Pages directory, or
- Visit us on the web at att.com/terms



HDLGO CTY HLTH DEPT
1304 S 25TH AVE
EDINBURG TX 78542 - 7205

Page 1 of 2
Account Number 956 383-0111 942 9
Billing Date Apr 19, 2013

Web Site att.com



INVOICE RECEIVED BY: Jeanette Palacios DATE 4/29/13
GOODS/SERVICES RECEIVED BY: Palacios DATE 4/19-5/18/13
3 -1100-441-00-340-003 -0-531
PYMT AMOUNTS 102.25 PO# 688425
APPROVED BY: [Signature] 5/18/13

Monthly Statement

Bill-At-A-Glance

Previous Bill	202.01
Payment Received 3-26	101.08CR
Adjustments	.00
Past Due - Please Pay Immediately	100.93
Current Charges	102.25
Total Amount Due	\$203.18
Current Charges Due in Full by	May 13, 2013

Plans and Services

Monthly Service - Apr 19 thru May 18

Charges for 956 383-0111

1. Monthly Charges	1.30
2. Basic Local Service - Business	22.36
Total Charges for 956 383-0111	23.66

Charges for 956 383-0112

3. Monthly Charges	1.30
4. Basic Local Service - Business	22.36
Total Charges for 956 383-0112	23.66

Charges for 956 383-7351

5. Monthly Charges	1.30
6. Basic Local Service - Business	20.85
Total Charges for 956 383-7351	22.15
Total Monthly Service	69.47

Billing Summary

Billing Questions? Visit att.com/billing Page

Plans and Services	1	102.25
1 800 770-2260		
Payment Arrangements:		
1 800 924-1743		
Service Changes:		
1 800 321-2000		
Repair Services:		
1 800 286-8313		
Total Current Charges		102.25

Additions and Changes to Service

This section of your bill reflects charges and credits resulting from account activity.

Item No.	Description	Quantity	Monthly Rate	Amount Billed
Activity on Apr 1, 2013 (Monthly Charges are Prorated from Apr 1, 2013 through Apr 18, 2013)				
7.	Federal Universal Service Fee	2		.05CR
8.	Federal Universal Service Fee	1		.02CR
Activity on Apr 23, 2013				
Charges for 956 383-0111				
One-Time Charges				
9.	Charges for Changing your Long Distance Service	1		1.64
10.	Federal Universal Service Fee Long Distance	1		.25
11.	Charges for Changing your Local Toll Service	1		1.61
Total Charges for 956 383-0111				3.50
Total Additions and Changes to Service				3.43

RECEIVED
Hidalgo County Health
& Human Services Department
APR 29 2013
1304 S. 25th Ave.
Edinburg, Texas 78542

News You Can Use Summary

- PREVENT DISCONNECT
 - LD PROVIDER CHANGE
- See "News You Can Use" for additional information

Directory Assistance

411				
12.	1	Call(s) billed at \$1.99 each		1.99

Local Services provided by AT&T Arkansas, AT&T Kansas, AT&T Missouri, AT&T Oklahoma, or AT&T Texas based upon the service address location.

GO GREEN - Enroll in paperless billing.

Printed on Recyclable Paper

Return bottom portion with your check in the enclosed envelope.



at&t

HDLGO CTY HLTH DEPT
1304 S 25TH AVE
EDINBURG TX 78542 - 7205

Page 2 of 2
Account Number 956 383-0111 942 ,9
Billing Date Apr 19, 2013

INVOICE RECEIVED BY
DATE
GOODS/SERVICES RECEIVED BY
DATE
1100-441-00-340-7-02-0-0

Plans and Services

Local Toll

Charges for 956 383-0111

Directory Assistance Calls

Dialed	411:	1	555:	0
Operator Handled	411:	0	555:	0

Surcharges and Other Fees

1. Federal Subscriber Line Charge	16.47
2. 911 Fee	1.68
3. Federal Universal Service Fee	2.85
4. Municipal right-of-way Fee	6.36
Total Surcharges and Other Fees	27.36

Taxes

5. Federal	.00
6. State and Local	.00
Total Taxes	.00

Total Plans and Services 102.25

News You Can Use

PREVENT DISCONNECT

Thank you for being a valued customer. Please be aware that all charges must be paid each month to keep your account current and prevent collection activities. We are required to inform you that certain charges such as your telephone line, and fees and surcharges **MUST** be paid in order to prevent interruption of basic local service. These charges are already included in the Total Amount Due and are \$199.82. Also, neglecting payment for other charges, such as long distance, voice mail, InLine®, wireless, and Internet may result in those services being interrupted.

LD PROVIDER CHANGE

Our records indicate that you have changed to MCI or a company that resells their services as your primary local toll carrier and MCI or a company that resells their services as your primary long distance carrier. Please contact us if this does not agree with your records.

Terms and Conditions

CARRIER QUESTIONS

You may contact the Public Utility Commission of Texas, Office of Customer Protection, P.O. Box 13326, Austin, TX 78711-3326, 1-512-936-7120 or toll-free in Texas at 1-888-782-8477 if you believe the local exchange provider or the interexchange carrier on your bill are not correct or if there are unauthorized charges on your bill. Hearing and speech impaired customers with text telephones (TTY) may call 1-512-936-7138. When corresponding by mail, include your complaint and copies of the phone bills. Please contact AT&T Texas to switch your service back to the carrier of your choice.

For a complete listing of Terms and Conditions, please refer to:

- The inside of the AT&T White Pages directory, or
- Visit us on the web at att.com/terms



