

# AIA<sup>®</sup> Document G714<sup>™</sup> – 2007

## Construction Change Directive

<b>PROJECT:</b> <i>(Name and address)</i> Hidalgo County Remodel Old Admin Bldg 100 E Cano Edinburg, Texas 78539	<b>DIRECTIVE NUMBER:</b> 002	<b>OWNER</b> <input checked="" type="checkbox"/>
<b>TO CONTRACTOR:</b> <i>(Name and address)</i> D Wilson Construction P.O. Box 3455 McAllen, Texas 78502	<b>DATE:</b> February 17, 2014	<b>ARCHITECT</b> <input checked="" type="checkbox"/>
	<b>CONTRACT FOR:</b> General Construction	<b>CONSULTANT</b> <input checked="" type="checkbox"/>
	<b>CONTRACT DATED:</b> October 23, 2012	<b>CONTRACTOR</b> <input checked="" type="checkbox"/>
	<b>ARCHITECT'S PROJECT NUMBER:</b>	<b>FIELD</b> <input type="checkbox"/>
		<b>OTHER</b> <input type="checkbox"/>

You are hereby directed to make the following change(s) in this Contract:  
*(Describe briefly any proposed changes or list any attached information in the alternative.)*

- ITEM 1: Changes to be per architects drawings titled Change 1. Change 2. Change 3. Change 4.  
ITEM 2: Add insulation above ceiling at 2nd Floor South Tower

SEE SUMMARY AND ATTACHMENTS:

### PROPOSED ADJUSTMENTS

1. The proposed basis of adjustment to the Contract Sum or Guaranteed Maximum Price:

- Lump Sum of \$73,651.00  
 Unit Price of \$ per  
 As provided in Section 7.3.3 of AIA Document A201<sup>™</sup>-2007  
 As follows:  
 As provided in 7.3.3.1 of AIA Document A201 - 2007 General Conditions of the Contract for Construction.



2. The Contract Time is proposed to be determined . The proposed adjustment, if any, is To Be Determined ( N/A ) days.

When signed by the Owner and Architect and received by the Contractor, this document becomes effective IMMEDIATELY as a Construction Change Directive (CCD), and the Contractor shall proceed with the change(s) described above.

Contractor signature indicates agreement with the proposed adjustments in Contract Sum and Contract Time set forth in this CCD.

Alcoer Garcia Associates, Inc.  
 ARCHITECT *(Firm name)*  
 1333 E Jasmine  
 McAllen, Texas 78501  
 ADDRESS

County of Hidalgo  
 OWNER *(Firm name)*  
 2802 S Business Hwy 281  
 Edinburg, Texas 78539  
 ADDRESS

D. Wilson Construction Company  
 CONTRACTOR *(Firm name)*  
 P.O. Box 3455  
 McAllen, Texas 78502  
 ADDRESS

*George A Garcia*  
 BY *(Signature)*  
 George A Garcia, Architect  
*(Typed name)*  
 2-17-14  
 DATE

BY *(Signature)*  
 Ramon Garcia, County Judge  
*(Typed name)*  
 DATE

*[Signature]*  
 BY *(Signature)*  
 Bill Wilson  
*(Typed name)*  
 2/17/14  
 DATE

JOB: Hidalgo County Admin Bldg Renovations

Addendum:  
Alternates: None  
Contract docs:  
Liquidated damages:  
Sub list required  
Square Feet:

PRINTED: 10:26:01 AM

		Base Bid
01-010	Extended General Conditions	44,373
	SUBTOTAL:	<u>44,373</u>
<b>02-000</b>	<b>SITework</b>	
	Not To Demolish 2 of the Vaults	(9,000)
	Demolish the C/P Concrete Under Escalator	<u>5,900</u>
	SUBTOTAL:	<u>(3,100)</u>
<b>03-000</b>	<b>CONCRETE</b>	
	Back Fill Pit Underneath Escalator	1,062
	SUBTOTAL:	<u>1,062</u>
<b>04-000</b>	<b>MASONRY</b>	
	SUBTOTAL:	<u>—</u>
<b>05-000</b>	<b>STRUCTURAL STEEL</b>	
	SUBTOTAL:	<u>—</u>
<b>06-000</b>	<b>Millwork</b>	
06-400	Delete 2' of Base Cabinet and Countertop @ Rec 147	(204)
06-400	Delete All Millwork @ Breakroom 163	(890)
06-400	Delete Lavatory Counters @ Mens RR 152 & Womans RR 154	(810)
06-400	Add Millwork @ Lounge 108	1,850
	SUBTOTAL:	<u>(54)</u>
<b>07-000</b>	<b>MOISTURE PROTECTION</b>	
	SUBTOTAL:	<u>—</u>
<b>08-000</b>	<b>DOORS &amp; WINDOWS</b>	
08-100	The quantity of doors removed as per submittal have been added back as per new layout.	—
08-700	Hardware Proposal Has Been Submitted/ Waiting on Response	—
	SUBTOTAL:	<u>—</u>
<b>09-000</b>	<b>FINISHES</b>	
09-100	Additional Interior Partitions	1,900
09-300	Additional Ceramic Tile Floor/Base and Wall Tile As Per Change #1	5,650
09-300	Additional Ceramic Tile Floor/Base and Wall Tile As Per Change #2	2,300
09-300	Additional Ceramic Tile Floor/Base and Wall Tile As Per Change #3	2,750
09-900	Additional Painting of Additional Interior Partitions	<u>3,060</u>
	SUBTOTAL:	<u>15,660</u>

JOB: Hidalgo County Admin Bldg Renovations

Addendum:  
Alternates: None  
Contract docs:  
Liquidated damages:  
Sub list required  
Square Feet:

PRINTED: 10:26:01 AM

		Base Bid
10-000	<b>SPECIALTIES: LABOR INCLUDED ON EACH LINE ITEM</b>	
10-700	Delete Toilet Partitions in Mens RR 152 & Womans 154	(1,385)
	SUBTOTAL	(1,385)
11-000	<b>Equipment</b>	
	Not Used	-
	SUBTOTAL	-
15-000	<b>MEP</b>	
	Plumbing Contractor	1,000
	Sawcut and Remove Concrete for Different Plumbing Layout	1,753
	HVAC Contractor	-
	Electric Contractor	6,790
	SUBTOTAL	9,543
	PROJECT SUBTOTAL	66,099
	D. Wilson Construction Company Fee	5.00% 3,304
	Bond & Insurance Fee	2.50% 1,652
	PROJECT TOTAL:	71,055



Architect Cards Associates, Inc.  
1203 Eastland Ave.  
Dallas, Texas 75201  
Phone: (972) 351-1200  
Fax: (972) 351-1208  
www.wbh.com

1ST AND 2ND FLOORS REMODEL  
FORMER ADMINISTRATION BUILDING  
CITY OF EDINBURG, TEXAS  
HIDALGO COUNTY, TEXAS

THE USE OF THESE DRAWINGS IS RESTRICTED TO THE PROJECT AND SPECIFICATIONS WHICH THEY WERE PREPARED FOR. ANY OTHER USE WITHOUT THE WRITTEN PERMISSION OF THE ARCHITECT IS PROHIBITED. THE OWNER IS RESPONSIBLE.



PROJECT: 1  
DATE: 12-14-10  
OWNER: CITY OF EDINBURG  
ARCHITECT: ACA  
SCALE: AS SHOWN  
SHEET: 1

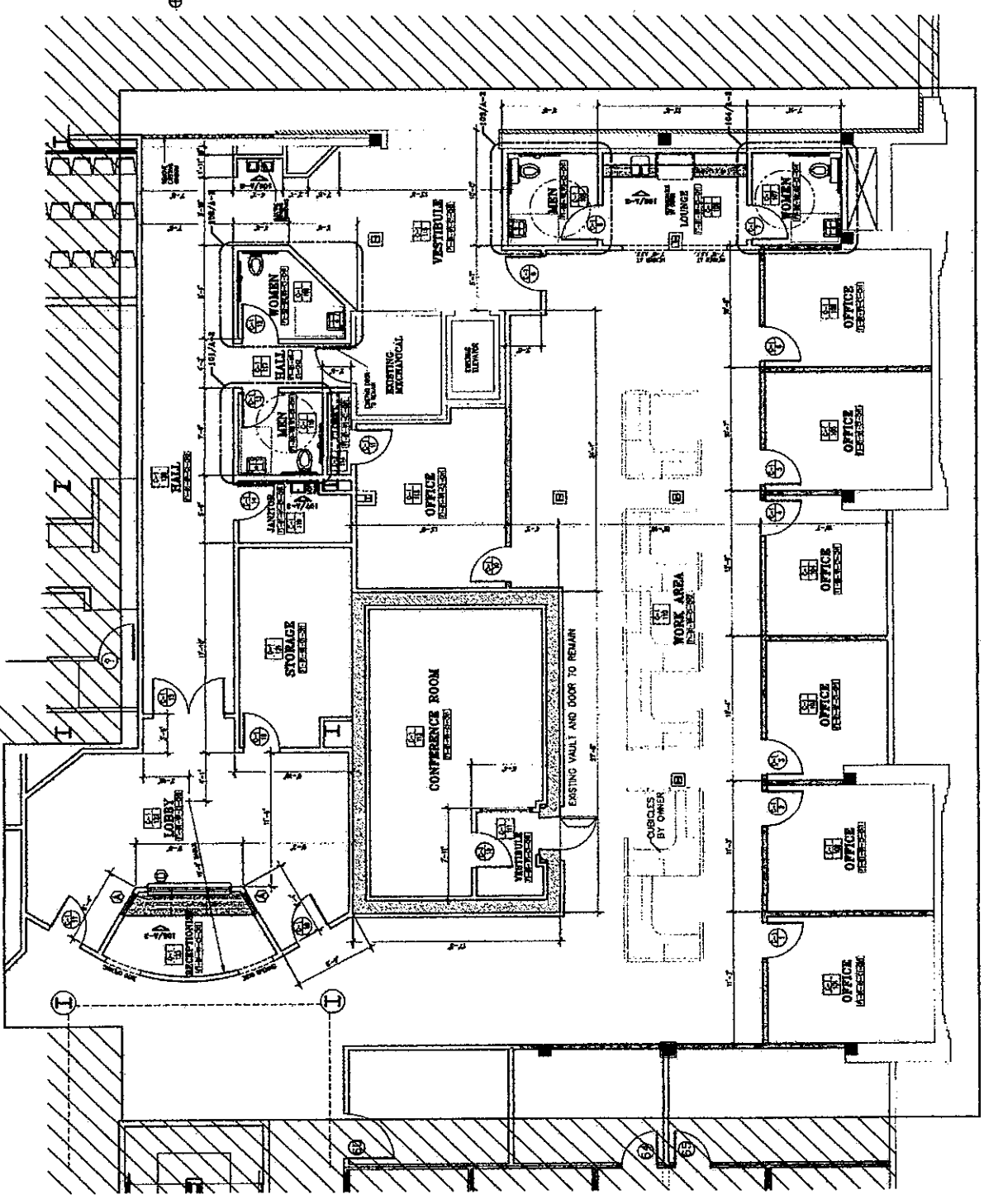
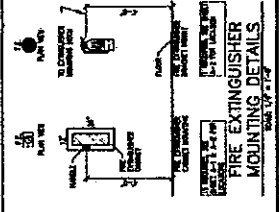
C-1  
A-1  
DRAWING NO. 1

ROOM FINISH SCHEDULE

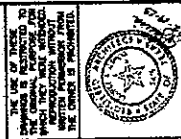
- FLOOR:  
1. CONCRETE FLOOR T&E
- BASE:  
1. 1/2" GYP BOARD  
2. 1/2" GYP BOARD  
3. 1/2" GYP BOARD
- WALLS:  
1. 5/8" GYP BOARD  
2. 5/8" GYP BOARD  
3. 5/8" GYP BOARD  
4. 5/8" GYP BOARD  
5. 5/8" GYP BOARD  
6. 5/8" GYP BOARD  
7. 5/8" GYP BOARD  
8. 5/8" GYP BOARD  
9. 5/8" GYP BOARD  
10. 5/8" GYP BOARD  
11. 5/8" GYP BOARD  
12. 5/8" GYP BOARD  
13. 5/8" GYP BOARD  
14. 5/8" GYP BOARD  
15. 5/8" GYP BOARD  
16. 5/8" GYP BOARD  
17. 5/8" GYP BOARD  
18. 5/8" GYP BOARD  
19. 5/8" GYP BOARD  
20. 5/8" GYP BOARD  
21. 5/8" GYP BOARD  
22. 5/8" GYP BOARD  
23. 5/8" GYP BOARD  
24. 5/8" GYP BOARD  
25. 5/8" GYP BOARD  
26. 5/8" GYP BOARD  
27. 5/8" GYP BOARD  
28. 5/8" GYP BOARD  
29. 5/8" GYP BOARD  
30. 5/8" GYP BOARD  
31. 5/8" GYP BOARD  
32. 5/8" GYP BOARD  
33. 5/8" GYP BOARD  
34. 5/8" GYP BOARD  
35. 5/8" GYP BOARD  
36. 5/8" GYP BOARD  
37. 5/8" GYP BOARD  
38. 5/8" GYP BOARD  
39. 5/8" GYP BOARD  
40. 5/8" GYP BOARD  
41. 5/8" GYP BOARD  
42. 5/8" GYP BOARD  
43. 5/8" GYP BOARD  
44. 5/8" GYP BOARD  
45. 5/8" GYP BOARD  
46. 5/8" GYP BOARD  
47. 5/8" GYP BOARD  
48. 5/8" GYP BOARD  
49. 5/8" GYP BOARD  
50. 5/8" GYP BOARD  
51. 5/8" GYP BOARD  
52. 5/8" GYP BOARD  
53. 5/8" GYP BOARD  
54. 5/8" GYP BOARD  
55. 5/8" GYP BOARD  
56. 5/8" GYP BOARD  
57. 5/8" GYP BOARD  
58. 5/8" GYP BOARD  
59. 5/8" GYP BOARD  
60. 5/8" GYP BOARD  
61. 5/8" GYP BOARD  
62. 5/8" GYP BOARD  
63. 5/8" GYP BOARD  
64. 5/8" GYP BOARD  
65. 5/8" GYP BOARD  
66. 5/8" GYP BOARD  
67. 5/8" GYP BOARD  
68. 5/8" GYP BOARD  
69. 5/8" GYP BOARD  
70. 5/8" GYP BOARD  
71. 5/8" GYP BOARD  
72. 5/8" GYP BOARD  
73. 5/8" GYP BOARD  
74. 5/8" GYP BOARD  
75. 5/8" GYP BOARD  
76. 5/8" GYP BOARD  
77. 5/8" GYP BOARD  
78. 5/8" GYP BOARD  
79. 5/8" GYP BOARD  
80. 5/8" GYP BOARD  
81. 5/8" GYP BOARD  
82. 5/8" GYP BOARD  
83. 5/8" GYP BOARD  
84. 5/8" GYP BOARD  
85. 5/8" GYP BOARD  
86. 5/8" GYP BOARD  
87. 5/8" GYP BOARD  
88. 5/8" GYP BOARD  
89. 5/8" GYP BOARD  
90. 5/8" GYP BOARD  
91. 5/8" GYP BOARD  
92. 5/8" GYP BOARD  
93. 5/8" GYP BOARD  
94. 5/8" GYP BOARD  
95. 5/8" GYP BOARD  
96. 5/8" GYP BOARD  
97. 5/8" GYP BOARD  
98. 5/8" GYP BOARD  
99. 5/8" GYP BOARD  
100. 5/8" GYP BOARD

- CEILING:  
1. 5/8" GYP BOARD  
2. 5/8" GYP BOARD  
3. 5/8" GYP BOARD  
4. 5/8" GYP BOARD  
5. 5/8" GYP BOARD  
6. 5/8" GYP BOARD  
7. 5/8" GYP BOARD  
8. 5/8" GYP BOARD  
9. 5/8" GYP BOARD  
10. 5/8" GYP BOARD  
11. 5/8" GYP BOARD  
12. 5/8" GYP BOARD  
13. 5/8" GYP BOARD  
14. 5/8" GYP BOARD  
15. 5/8" GYP BOARD  
16. 5/8" GYP BOARD  
17. 5/8" GYP BOARD  
18. 5/8" GYP BOARD  
19. 5/8" GYP BOARD  
20. 5/8" GYP BOARD  
21. 5/8" GYP BOARD  
22. 5/8" GYP BOARD  
23. 5/8" GYP BOARD  
24. 5/8" GYP BOARD  
25. 5/8" GYP BOARD  
26. 5/8" GYP BOARD  
27. 5/8" GYP BOARD  
28. 5/8" GYP BOARD  
29. 5/8" GYP BOARD  
30. 5/8" GYP BOARD  
31. 5/8" GYP BOARD  
32. 5/8" GYP BOARD  
33. 5/8" GYP BOARD  
34. 5/8" GYP BOARD  
35. 5/8" GYP BOARD  
36. 5/8" GYP BOARD  
37. 5/8" GYP BOARD  
38. 5/8" GYP BOARD  
39. 5/8" GYP BOARD  
40. 5/8" GYP BOARD  
41. 5/8" GYP BOARD  
42. 5/8" GYP BOARD  
43. 5/8" GYP BOARD  
44. 5/8" GYP BOARD  
45. 5/8" GYP BOARD  
46. 5/8" GYP BOARD  
47. 5/8" GYP BOARD  
48. 5/8" GYP BOARD  
49. 5/8" GYP BOARD  
50. 5/8" GYP BOARD  
51. 5/8" GYP BOARD  
52. 5/8" GYP BOARD  
53. 5/8" GYP BOARD  
54. 5/8" GYP BOARD  
55. 5/8" GYP BOARD  
56. 5/8" GYP BOARD  
57. 5/8" GYP BOARD  
58. 5/8" GYP BOARD  
59. 5/8" GYP BOARD  
60. 5/8" GYP BOARD  
61. 5/8" GYP BOARD  
62. 5/8" GYP BOARD  
63. 5/8" GYP BOARD  
64. 5/8" GYP BOARD  
65. 5/8" GYP BOARD  
66. 5/8" GYP BOARD  
67. 5/8" GYP BOARD  
68. 5/8" GYP BOARD  
69. 5/8" GYP BOARD  
70. 5/8" GYP BOARD  
71. 5/8" GYP BOARD  
72. 5/8" GYP BOARD  
73. 5/8" GYP BOARD  
74. 5/8" GYP BOARD  
75. 5/8" GYP BOARD  
76. 5/8" GYP BOARD  
77. 5/8" GYP BOARD  
78. 5/8" GYP BOARD  
79. 5/8" GYP BOARD  
80. 5/8" GYP BOARD  
81. 5/8" GYP BOARD  
82. 5/8" GYP BOARD  
83. 5/8" GYP BOARD  
84. 5/8" GYP BOARD  
85. 5/8" GYP BOARD  
86. 5/8" GYP BOARD  
87. 5/8" GYP BOARD  
88. 5/8" GYP BOARD  
89. 5/8" GYP BOARD  
90. 5/8" GYP BOARD  
91. 5/8" GYP BOARD  
92. 5/8" GYP BOARD  
93. 5/8" GYP BOARD  
94. 5/8" GYP BOARD  
95. 5/8" GYP BOARD  
96. 5/8" GYP BOARD  
97. 5/8" GYP BOARD  
98. 5/8" GYP BOARD  
99. 5/8" GYP BOARD  
100. 5/8" GYP BOARD

- ROOM NUMBERING  
C-1 ROOM NUMBER  
101 ROOM NUMBER
- DOOR NUMBERING  
C-1 DOOR NUMBER  
101 DOOR NUMBER



FIRST FLOOR PLAN  
SCALE: 1/8" = 1'-0"



PROJECT #	10000
DATE	12/15/10
DESIGNED BY	J.M.
CHECKED BY	J.M.
DATE	12/15/10
SCALE	AS SHOWN

**C-2**  
**A-1**  
CHANGE NO. 2

**ROOM FINISH SCHEDULE**  
FLOOR: TERRAZZO FLOOR TILE

**BASE:**  
1. 1/2" TYP. OVER LINE  
2. 1/2" TYP. OVER TILE

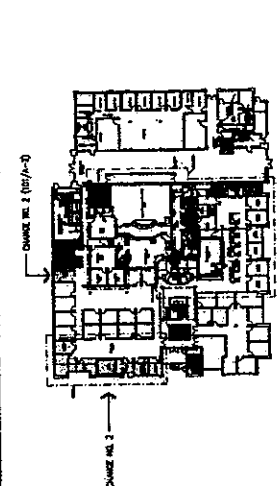
**WALLS:**  
1. 5/8" GYP. BOARD  
2. 1/2" GYP. BOARD  
3. 1/2" GYP. BOARD  
4. 1/2" GYP. BOARD  
5. 1/2" GYP. BOARD  
6. 1/2" GYP. BOARD  
7. 1/2" GYP. BOARD  
8. 1/2" GYP. BOARD  
9. 1/2" GYP. BOARD  
10. 1/2" GYP. BOARD  
11. 1/2" GYP. BOARD  
12. 1/2" GYP. BOARD  
13. 1/2" GYP. BOARD  
14. 1/2" GYP. BOARD  
15. 1/2" GYP. BOARD  
16. 1/2" GYP. BOARD  
17. 1/2" GYP. BOARD  
18. 1/2" GYP. BOARD  
19. 1/2" GYP. BOARD  
20. 1/2" GYP. BOARD  
21. 1/2" GYP. BOARD  
22. 1/2" GYP. BOARD  
23. 1/2" GYP. BOARD  
24. 1/2" GYP. BOARD  
25. 1/2" GYP. BOARD  
26. 1/2" GYP. BOARD  
27. 1/2" GYP. BOARD  
28. 1/2" GYP. BOARD  
29. 1/2" GYP. BOARD  
30. 1/2" GYP. BOARD  
31. 1/2" GYP. BOARD  
32. 1/2" GYP. BOARD  
33. 1/2" GYP. BOARD  
34. 1/2" GYP. BOARD  
35. 1/2" GYP. BOARD  
36. 1/2" GYP. BOARD  
37. 1/2" GYP. BOARD  
38. 1/2" GYP. BOARD  
39. 1/2" GYP. BOARD  
40. 1/2" GYP. BOARD  
41. 1/2" GYP. BOARD  
42. 1/2" GYP. BOARD  
43. 1/2" GYP. BOARD  
44. 1/2" GYP. BOARD  
45. 1/2" GYP. BOARD  
46. 1/2" GYP. BOARD  
47. 1/2" GYP. BOARD  
48. 1/2" GYP. BOARD  
49. 1/2" GYP. BOARD  
50. 1/2" GYP. BOARD  
51. 1/2" GYP. BOARD  
52. 1/2" GYP. BOARD  
53. 1/2" GYP. BOARD  
54. 1/2" GYP. BOARD  
55. 1/2" GYP. BOARD  
56. 1/2" GYP. BOARD  
57. 1/2" GYP. BOARD  
58. 1/2" GYP. BOARD  
59. 1/2" GYP. BOARD  
60. 1/2" GYP. BOARD  
61. 1/2" GYP. BOARD  
62. 1/2" GYP. BOARD  
63. 1/2" GYP. BOARD  
64. 1/2" GYP. BOARD  
65. 1/2" GYP. BOARD  
66. 1/2" GYP. BOARD  
67. 1/2" GYP. BOARD  
68. 1/2" GYP. BOARD  
69. 1/2" GYP. BOARD  
70. 1/2" GYP. BOARD  
71. 1/2" GYP. BOARD  
72. 1/2" GYP. BOARD  
73. 1/2" GYP. BOARD  
74. 1/2" GYP. BOARD  
75. 1/2" GYP. BOARD  
76. 1/2" GYP. BOARD  
77. 1/2" GYP. BOARD  
78. 1/2" GYP. BOARD  
79. 1/2" GYP. BOARD  
80. 1/2" GYP. BOARD  
81. 1/2" GYP. BOARD  
82. 1/2" GYP. BOARD  
83. 1/2" GYP. BOARD  
84. 1/2" GYP. BOARD  
85. 1/2" GYP. BOARD  
86. 1/2" GYP. BOARD  
87. 1/2" GYP. BOARD  
88. 1/2" GYP. BOARD  
89. 1/2" GYP. BOARD  
90. 1/2" GYP. BOARD  
91. 1/2" GYP. BOARD  
92. 1/2" GYP. BOARD  
93. 1/2" GYP. BOARD  
94. 1/2" GYP. BOARD  
95. 1/2" GYP. BOARD  
96. 1/2" GYP. BOARD  
97. 1/2" GYP. BOARD  
98. 1/2" GYP. BOARD  
99. 1/2" GYP. BOARD  
100. 1/2" GYP. BOARD

**WALL LEGEND:**

1. 5/8" GYP. BOARD  
2. 1/2" GYP. BOARD  
3. 1/2" GYP. BOARD  
4. 1/2" GYP. BOARD  
5. 1/2" GYP. BOARD  
6. 1/2" GYP. BOARD  
7. 1/2" GYP. BOARD  
8. 1/2" GYP. BOARD  
9. 1/2" GYP. BOARD  
10. 1/2" GYP. BOARD  
11. 1/2" GYP. BOARD  
12. 1/2" GYP. BOARD  
13. 1/2" GYP. BOARD  
14. 1/2" GYP. BOARD  
15. 1/2" GYP. BOARD  
16. 1/2" GYP. BOARD  
17. 1/2" GYP. BOARD  
18. 1/2" GYP. BOARD  
19. 1/2" GYP. BOARD  
20. 1/2" GYP. BOARD  
21. 1/2" GYP. BOARD  
22. 1/2" GYP. BOARD  
23. 1/2" GYP. BOARD  
24. 1/2" GYP. BOARD  
25. 1/2" GYP. BOARD  
26. 1/2" GYP. BOARD  
27. 1/2" GYP. BOARD  
28. 1/2" GYP. BOARD  
29. 1/2" GYP. BOARD  
30. 1/2" GYP. BOARD  
31. 1/2" GYP. BOARD  
32. 1/2" GYP. BOARD  
33. 1/2" GYP. BOARD  
34. 1/2" GYP. BOARD  
35. 1/2" GYP. BOARD  
36. 1/2" GYP. BOARD  
37. 1/2" GYP. BOARD  
38. 1/2" GYP. BOARD  
39. 1/2" GYP. BOARD  
40. 1/2" GYP. BOARD  
41. 1/2" GYP. BOARD  
42. 1/2" GYP. BOARD  
43. 1/2" GYP. BOARD  
44. 1/2" GYP. BOARD  
45. 1/2" GYP. BOARD  
46. 1/2" GYP. BOARD  
47. 1/2" GYP. BOARD  
48. 1/2" GYP. BOARD  
49. 1/2" GYP. BOARD  
50. 1/2" GYP. BOARD  
51. 1/2" GYP. BOARD  
52. 1/2" GYP. BOARD  
53. 1/2" GYP. BOARD  
54. 1/2" GYP. BOARD  
55. 1/2" GYP. BOARD  
56. 1/2" GYP. BOARD  
57. 1/2" GYP. BOARD  
58. 1/2" GYP. BOARD  
59. 1/2" GYP. BOARD  
60. 1/2" GYP. BOARD  
61. 1/2" GYP. BOARD  
62. 1/2" GYP. BOARD  
63. 1/2" GYP. BOARD  
64. 1/2" GYP. BOARD  
65. 1/2" GYP. BOARD  
66. 1/2" GYP. BOARD  
67. 1/2" GYP. BOARD  
68. 1/2" GYP. BOARD  
69. 1/2" GYP. BOARD  
70. 1/2" GYP. BOARD  
71. 1/2" GYP. BOARD  
72. 1/2" GYP. BOARD  
73. 1/2" GYP. BOARD  
74. 1/2" GYP. BOARD  
75. 1/2" GYP. BOARD  
76. 1/2" GYP. BOARD  
77. 1/2" GYP. BOARD  
78. 1/2" GYP. BOARD  
79. 1/2" GYP. BOARD  
80. 1/2" GYP. BOARD  
81. 1/2" GYP. BOARD  
82. 1/2" GYP. BOARD  
83. 1/2" GYP. BOARD  
84. 1/2" GYP. BOARD  
85. 1/2" GYP. BOARD  
86. 1/2" GYP. BOARD  
87. 1/2" GYP. BOARD  
88. 1/2" GYP. BOARD  
89. 1/2" GYP. BOARD  
90. 1/2" GYP. BOARD  
91. 1/2" GYP. BOARD  
92. 1/2" GYP. BOARD  
93. 1/2" GYP. BOARD  
94. 1/2" GYP. BOARD  
95. 1/2" GYP. BOARD  
96. 1/2" GYP. BOARD  
97. 1/2" GYP. BOARD  
98. 1/2" GYP. BOARD  
99. 1/2" GYP. BOARD  
100. 1/2" GYP. BOARD

**ROOM NUMBERING:**

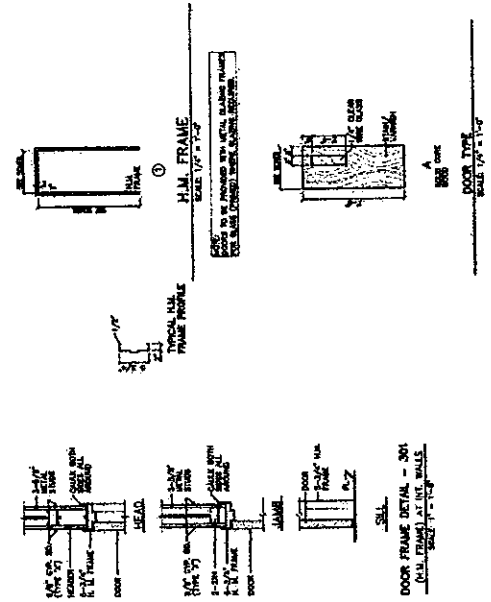
1. 100  
2. 101  
3. 102  
4. 103  
5. 104  
6. 105  
7. 106  
8. 107  
9. 108  
10. 109  
11. 110  
12. 111  
13. 112  
14. 113  
15. 114  
16. 115  
17. 116  
18. 117  
19. 118  
20. 119  
21. 120  
22. 121  
23. 122  
24. 123  
25. 124  
26. 125  
27. 126  
28. 127  
29. 128  
30. 129  
31. 130  
32. 131  
33. 132  
34. 133  
35. 134  
36. 135  
37. 136  
38. 137  
39. 138  
40. 139  
41. 140  
42. 141  
43. 142  
44. 143  
45. 144  
46. 145  
47. 146  
48. 147  
49. 148  
50. 149  
51. 150  
52. 151  
53. 152  
54. 153  
55. 154  
56. 155  
57. 156  
58. 157  
59. 158  
60. 159  
61. 160  
62. 161  
63. 162  
64. 163  
65. 164  
66. 165  
67. 166  
68. 167  
69. 168  
70. 169  
71. 170  
72. 171  
73. 172  
74. 173  
75. 174  
76. 175  
77. 176  
78. 177  
79. 178  
80. 179  
81. 180  
82. 181  
83. 182  
84. 183  
85. 184  
86. 185  
87. 186  
88. 187  
89. 188  
90. 189  
91. 190  
92. 191  
93. 192  
94. 193  
95. 194  
96. 195  
97. 196  
98. 197  
99. 198  
100. 199  
101. 200



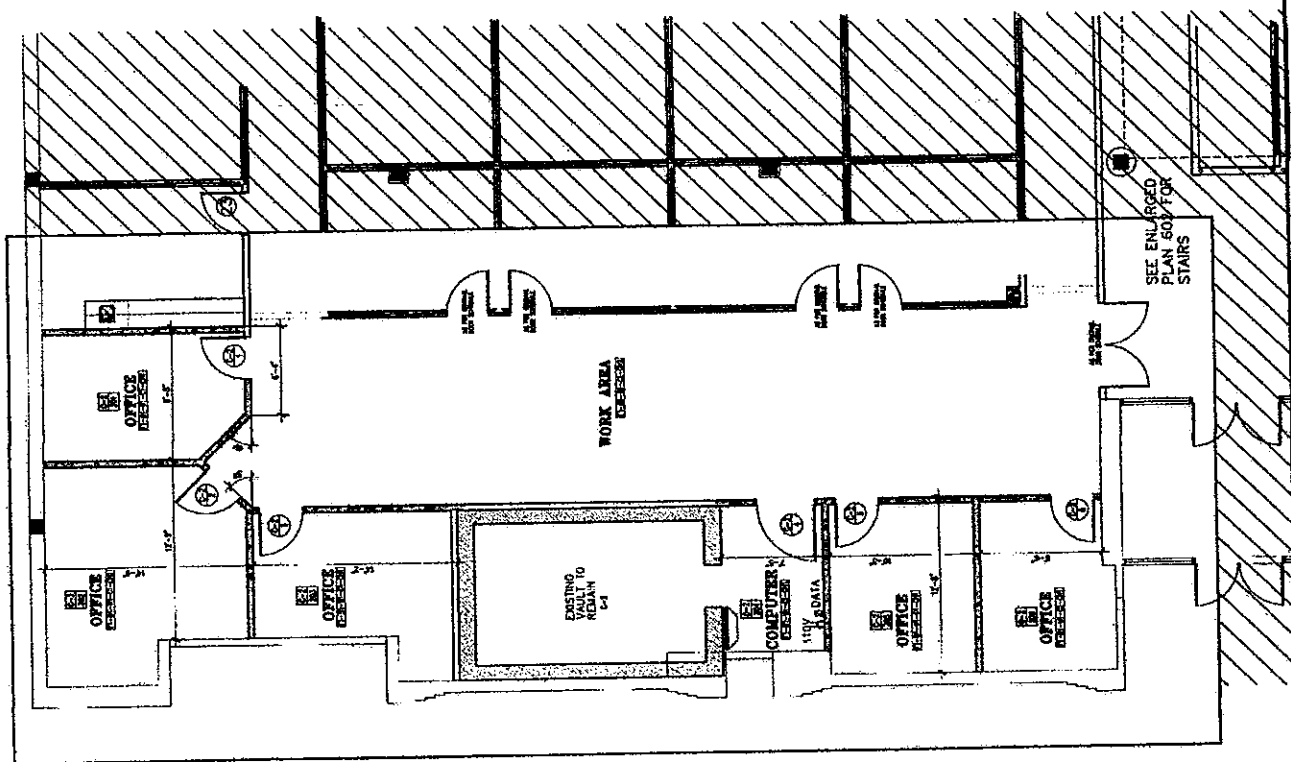
**REVISIONS LOCATIONS PLAN**

**1ST FLOOR DOOR SCHEDULE**

NO.	TYPE	SIZE	LOCATION	REMARKS
1	SWING	3'-0" x 7'-0"	OFFICE 101	
2	SLIDING	3'-0" x 7'-0"	OFFICE 102	
3	SWING	3'-0" x 7'-0"	OFFICE 103	
4	SWING	3'-0" x 7'-0"	OFFICE 104	
5	SWING	3'-0" x 7'-0"	OFFICE 105	
6	SWING	3'-0" x 7'-0"	OFFICE 106	
7	SWING	3'-0" x 7'-0"	OFFICE 107	
8	SWING	3'-0" x 7'-0"	OFFICE 108	
9	SWING	3'-0" x 7'-0"	OFFICE 109	
10	SWING	3'-0" x 7'-0"	OFFICE 110	
11	SWING	3'-0" x 7'-0"	OFFICE 111	
12	SWING	3'-0" x 7'-0"	OFFICE 112	
13	SWING	3'-0" x 7'-0"	OFFICE 113	
14	SWING	3'-0" x 7'-0"	OFFICE 114	
15	SWING	3'-0" x 7'-0"	OFFICE 115	
16	SWING	3'-0" x 7'-0"	OFFICE 116	
17	SWING	3'-0" x 7'-0"	OFFICE 117	
18	SWING	3'-0" x 7'-0"	OFFICE 118	
19	SWING	3'-0" x 7'-0"	OFFICE 119	
20	SWING	3'-0" x 7'-0"	OFFICE 120	
21	SWING	3'-0" x 7'-0"	OFFICE 121	
22	SWING	3'-0" x 7'-0"	OFFICE 122	
23	SWING	3'-0" x 7'-0"	OFFICE 123	
24	SWING	3'-0" x 7'-0"	OFFICE 124	
25	SWING	3'-0" x 7'-0"	OFFICE 125	
26	SWING	3'-0" x 7'-0"	OFFICE 126	
27	SWING	3'-0" x 7'-0"	OFFICE 127	
28	SWING	3'-0" x 7'-0"	OFFICE 128	
29	SWING	3'-0" x 7'-0"	OFFICE 129	
30	SWING	3'-0" x 7'-0"	OFFICE 130	
31	SWING	3'-0" x 7'-0"	OFFICE 131	
32	SWING	3'-0" x 7'-0"	OFFICE 132	
33	SWING	3'-0" x 7'-0"	OFFICE 133	
34	SWING	3'-0" x 7'-0"	OFFICE 134	
35	SWING	3'-0" x 7'-0"	OFFICE 135	
36	SWING	3'-0" x 7'-0"	OFFICE 136	
37	SWING	3'-0" x 7'-0"	OFFICE 137	
38	SWING	3'-0" x 7'-0"	OFFICE 138	
39	SWING	3'-0" x 7'-0"	OFFICE 139	
40	SWING	3'-0" x 7'-0"	OFFICE 140	
41	SWING	3'-0" x 7'-0"	OFFICE 141	
42	SWING	3'-0" x 7'-0"	OFFICE 142	
43	SWING	3'-0" x 7'-0"	OFFICE 143	
44	SWING	3'-0" x 7'-0"	OFFICE 144	
45	SWING	3'-0" x 7'-0"	OFFICE 145	
46	SWING	3'-0" x 7'-0"	OFFICE 146	
47	SWING	3'-0" x 7'-0"	OFFICE 147	
48	SWING	3'-0" x 7'-0"	OFFICE 148	
49	SWING	3'-0" x 7'-0"	OFFICE 149	
50	SWING	3'-0" x 7'-0"	OFFICE 150	
51	SWING	3'-0" x 7'-0"	OFFICE 151	
52	SWING	3'-0" x 7'-0"	OFFICE 152	
53	SWING	3'-0" x 7'-0"	OFFICE 153	
54	SWING	3'-0" x 7'-0"	OFFICE 154	
55	SWING	3'-0" x 7'-0"	OFFICE 155	
56	SWING	3'-0" x 7'-0"	OFFICE 156	
57	SWING	3'-0" x 7'-0"	OFFICE 157	
58	SWING	3'-0" x 7'-0"	OFFICE 158	
59	SWING	3'-0" x 7'-0"	OFFICE 159	
60	SWING	3'-0" x 7'-0"	OFFICE 160	
61	SWING	3'-0" x 7'-0"	OFFICE 161	
62	SWING	3'-0" x 7'-0"	OFFICE 162	
63	SWING	3'-0" x 7'-0"	OFFICE 163	
64	SWING	3'-0" x 7'-0"	OFFICE 164	
65	SWING	3'-0" x 7'-0"	OFFICE 165	
66	SWING	3'-0" x 7'-0"	OFFICE 166	
67	SWING	3'-0" x 7'-0"	OFFICE 167	
68	SWING	3'-0" x 7'-0"	OFFICE 168	
69	SWING	3'-0" x 7'-0"	OFFICE 169	
70	SWING	3'-0" x 7'-0"	OFFICE 170	
71	SWING	3'-0" x 7'-0"	OFFICE 171	
72	SWING	3'-0" x 7'-0"	OFFICE 172	
73	SWING	3'-0" x 7'-0"	OFFICE 173	
74	SWING	3'-0" x 7'-0"	OFFICE 174	
75	SWING	3'-0" x 7'-0"	OFFICE 175	
76	SWING	3'-0" x 7'-0"	OFFICE 176	
77	SWING	3'-0" x 7'-0"	OFFICE 177	
78	SWING	3'-0" x 7'-0"	OFFICE 178	
79	SWING	3'-0" x 7'-0"	OFFICE 179	
80	SWING	3'-0" x 7'-0"	OFFICE 180	
81	SWING	3'-0" x 7'-0"	OFFICE 181	
82	SWING	3'-0" x 7'-0"	OFFICE 182	
83	SWING	3'-0" x 7'-0"	OFFICE 183	
84	SWING	3'-0" x 7'-0"	OFFICE 184	
85	SWING	3'-0" x 7'-0"	OFFICE 185	
86	SWING	3'-0" x 7'-0"	OFFICE 186	
87	SWING	3'-0" x 7'-0"	OFFICE 187	
88	SWING	3'-0" x 7'-0"	OFFICE 188	
89	SWING	3'-0" x 7'-0"	OFFICE 189	
90	SWING	3'-0" x 7'-0"	OFFICE 190	
91	SWING	3'-0" x 7'-0"	OFFICE 191	
92	SWING	3'-0" x 7'-0"	OFFICE 192	
93	SWING	3'-0" x 7'-0"	OFFICE 193	
94	SWING	3'-0" x 7'-0"	OFFICE 194	
95	SWING	3'-0" x 7'-0"	OFFICE 195	
96	SWING	3'-0" x 7'-0"	OFFICE 196	
97	SWING	3'-0" x 7'-0"	OFFICE 197	
98	SWING	3'-0" x 7'-0"	OFFICE 198	
99	SWING	3'-0" x 7'-0"	OFFICE 199	
100	SWING	3'-0" x 7'-0"	OFFICE 200	



**FIRST FLOOR CHANGE-2 PLAN**  
SCALE: 1/8" = 1'-0"





AGCA  
 1233 E. Lamar Ave.  
 Houston, Texas 77002  
 Phone: 281.488.2200  
 Fax: 281.488.2208  
 Web: www.agca.com

Design Consulting  
 Ackerly-Gardner Associates, Inc.

1ST AND 2ND FLOORS REMODEL  
 FORMER ADMINISTRATION BUILDING  
 HIDALGO COUNTY, TEXAS  
 CITY OF EDINBURG, TEXAS

THE USE OF THIS DRAWING IS RESTRICTED TO THE PROJECT AND SITE SPECIFICALLY IDENTIFIED HEREON. ANY OTHER USE WITHOUT THE WRITTEN PERMISSION OF THE ARCHITECT IS PROHIBITED. THE OWNER IS RESPONSIBLE.



PROJECT #  
 DESIGNER  
 DRAWN BY: C.C.  
 CHECKED BY:  
 DATE: 11/14/07  
 SHEET

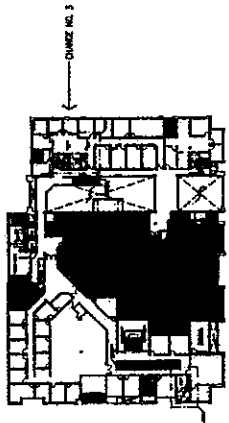
C-3  
 A-1  
 CHANGE NO. 3

ROOM FINISH SCHEDULE  
 FLOORS  
 F1 - CORONAL FLOOR TILE  
 BASE:  
 B1 - 1" VENEER CORONAL  
 WALLS:  
 W1 - TYPICAL  
 W2 - TYPICAL  
 W3 - TYPICAL  
 W4 - TYPICAL  
 W5 - TYPICAL  
 W6 - TYPICAL  
 W7 - TYPICAL  
 W8 - TYPICAL  
 W9 - TYPICAL  
 W10 - TYPICAL  
 W11 - TYPICAL  
 W12 - TYPICAL  
 W13 - TYPICAL  
 W14 - TYPICAL  
 W15 - TYPICAL  
 W16 - TYPICAL  
 W17 - TYPICAL  
 W18 - TYPICAL  
 W19 - TYPICAL  
 W20 - TYPICAL  
 W21 - TYPICAL  
 W22 - TYPICAL  
 W23 - TYPICAL  
 W24 - TYPICAL  
 W25 - TYPICAL  
 W26 - TYPICAL  
 W27 - TYPICAL  
 W28 - TYPICAL  
 W29 - TYPICAL  
 W30 - TYPICAL  
 W31 - TYPICAL  
 W32 - TYPICAL  
 W33 - TYPICAL  
 W34 - TYPICAL  
 W35 - TYPICAL  
 W36 - TYPICAL  
 W37 - TYPICAL  
 W38 - TYPICAL  
 W39 - TYPICAL  
 W40 - TYPICAL  
 W41 - TYPICAL  
 W42 - TYPICAL  
 W43 - TYPICAL  
 W44 - TYPICAL  
 W45 - TYPICAL  
 W46 - TYPICAL  
 W47 - TYPICAL  
 W48 - TYPICAL  
 W49 - TYPICAL  
 W50 - TYPICAL  
 W51 - TYPICAL  
 W52 - TYPICAL  
 W53 - TYPICAL  
 W54 - TYPICAL  
 W55 - TYPICAL  
 W56 - TYPICAL  
 W57 - TYPICAL  
 W58 - TYPICAL  
 W59 - TYPICAL  
 W60 - TYPICAL  
 W61 - TYPICAL  
 W62 - TYPICAL  
 W63 - TYPICAL  
 W64 - TYPICAL  
 W65 - TYPICAL  
 W66 - TYPICAL  
 W67 - TYPICAL  
 W68 - TYPICAL  
 W69 - TYPICAL  
 W70 - TYPICAL  
 W71 - TYPICAL  
 W72 - TYPICAL  
 W73 - TYPICAL  
 W74 - TYPICAL  
 W75 - TYPICAL  
 W76 - TYPICAL  
 W77 - TYPICAL  
 W78 - TYPICAL  
 W79 - TYPICAL  
 W80 - TYPICAL  
 W81 - TYPICAL  
 W82 - TYPICAL  
 W83 - TYPICAL  
 W84 - TYPICAL  
 W85 - TYPICAL  
 W86 - TYPICAL  
 W87 - TYPICAL  
 W88 - TYPICAL  
 W89 - TYPICAL  
 W90 - TYPICAL  
 W91 - TYPICAL  
 W92 - TYPICAL  
 W93 - TYPICAL  
 W94 - TYPICAL  
 W95 - TYPICAL  
 W96 - TYPICAL  
 W97 - TYPICAL  
 W98 - TYPICAL  
 W99 - TYPICAL  
 W100 - TYPICAL

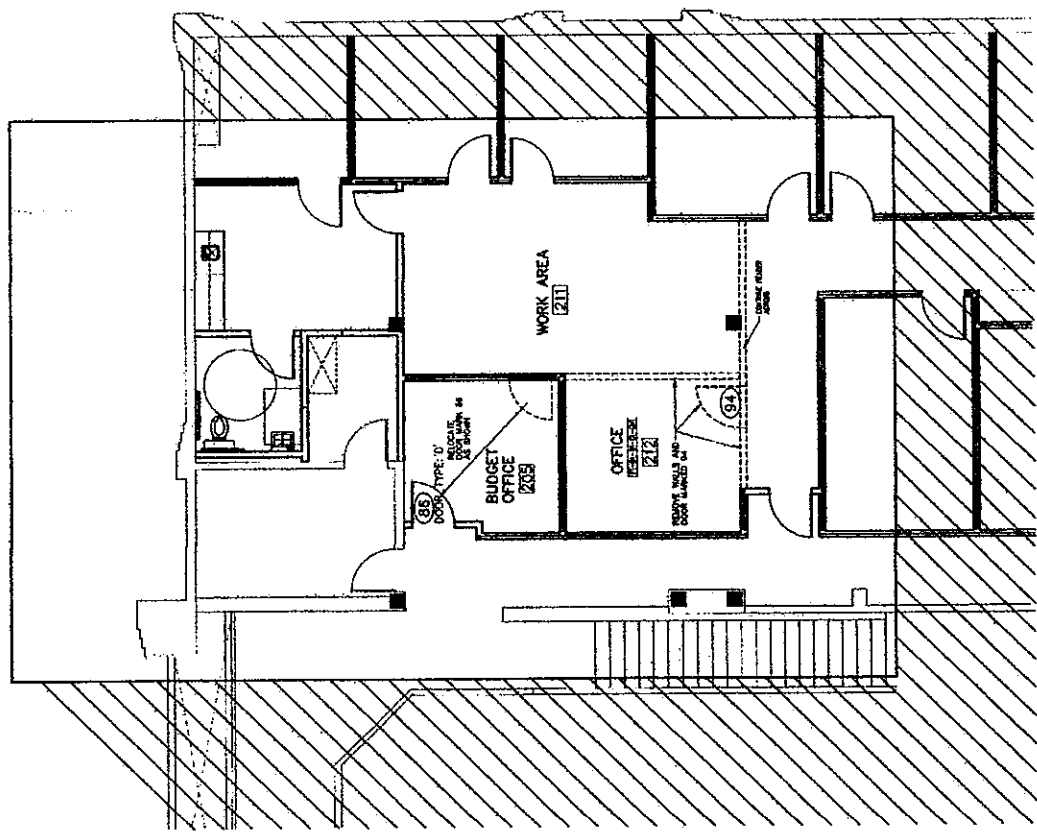
CEILING:  
 C1 - TYPICAL  
 C2 - TYPICAL  
 C3 - TYPICAL  
 C4 - TYPICAL  
 C5 - TYPICAL  
 C6 - TYPICAL  
 C7 - TYPICAL  
 C8 - TYPICAL  
 C9 - TYPICAL  
 C10 - TYPICAL  
 C11 - TYPICAL  
 C12 - TYPICAL  
 C13 - TYPICAL  
 C14 - TYPICAL  
 C15 - TYPICAL  
 C16 - TYPICAL  
 C17 - TYPICAL  
 C18 - TYPICAL  
 C19 - TYPICAL  
 C20 - TYPICAL  
 C21 - TYPICAL  
 C22 - TYPICAL  
 C23 - TYPICAL  
 C24 - TYPICAL  
 C25 - TYPICAL  
 C26 - TYPICAL  
 C27 - TYPICAL  
 C28 - TYPICAL  
 C29 - TYPICAL  
 C30 - TYPICAL  
 C31 - TYPICAL  
 C32 - TYPICAL  
 C33 - TYPICAL  
 C34 - TYPICAL  
 C35 - TYPICAL  
 C36 - TYPICAL  
 C37 - TYPICAL  
 C38 - TYPICAL  
 C39 - TYPICAL  
 C40 - TYPICAL  
 C41 - TYPICAL  
 C42 - TYPICAL  
 C43 - TYPICAL  
 C44 - TYPICAL  
 C45 - TYPICAL  
 C46 - TYPICAL  
 C47 - TYPICAL  
 C48 - TYPICAL  
 C49 - TYPICAL  
 C50 - TYPICAL  
 C51 - TYPICAL  
 C52 - TYPICAL  
 C53 - TYPICAL  
 C54 - TYPICAL  
 C55 - TYPICAL  
 C56 - TYPICAL  
 C57 - TYPICAL  
 C58 - TYPICAL  
 C59 - TYPICAL  
 C60 - TYPICAL  
 C61 - TYPICAL  
 C62 - TYPICAL  
 C63 - TYPICAL  
 C64 - TYPICAL  
 C65 - TYPICAL  
 C66 - TYPICAL  
 C67 - TYPICAL  
 C68 - TYPICAL  
 C69 - TYPICAL  
 C70 - TYPICAL  
 C71 - TYPICAL  
 C72 - TYPICAL  
 C73 - TYPICAL  
 C74 - TYPICAL  
 C75 - TYPICAL  
 C76 - TYPICAL  
 C77 - TYPICAL  
 C78 - TYPICAL  
 C79 - TYPICAL  
 C80 - TYPICAL  
 C81 - TYPICAL  
 C82 - TYPICAL  
 C83 - TYPICAL  
 C84 - TYPICAL  
 C85 - TYPICAL  
 C86 - TYPICAL  
 C87 - TYPICAL  
 C88 - TYPICAL  
 C89 - TYPICAL  
 C90 - TYPICAL  
 C91 - TYPICAL  
 C92 - TYPICAL  
 C93 - TYPICAL  
 C94 - TYPICAL  
 C95 - TYPICAL  
 C96 - TYPICAL  
 C97 - TYPICAL  
 C98 - TYPICAL  
 C99 - TYPICAL  
 C100 - TYPICAL

CEILING HEIGHT:  
 CH1 - TYPICAL  
 CH2 - TYPICAL  
 CH3 - TYPICAL  
 CH4 - TYPICAL  
 CH5 - TYPICAL  
 CH6 - TYPICAL  
 CH7 - TYPICAL  
 CH8 - TYPICAL  
 CH9 - TYPICAL  
 CH10 - TYPICAL  
 CH11 - TYPICAL  
 CH12 - TYPICAL  
 CH13 - TYPICAL  
 CH14 - TYPICAL  
 CH15 - TYPICAL  
 CH16 - TYPICAL  
 CH17 - TYPICAL  
 CH18 - TYPICAL  
 CH19 - TYPICAL  
 CH20 - TYPICAL  
 CH21 - TYPICAL  
 CH22 - TYPICAL  
 CH23 - TYPICAL  
 CH24 - TYPICAL  
 CH25 - TYPICAL  
 CH26 - TYPICAL  
 CH27 - TYPICAL  
 CH28 - TYPICAL  
 CH29 - TYPICAL  
 CH30 - TYPICAL  
 CH31 - TYPICAL  
 CH32 - TYPICAL  
 CH33 - TYPICAL  
 CH34 - TYPICAL  
 CH35 - TYPICAL  
 CH36 - TYPICAL  
 CH37 - TYPICAL  
 CH38 - TYPICAL  
 CH39 - TYPICAL  
 CH40 - TYPICAL  
 CH41 - TYPICAL  
 CH42 - TYPICAL  
 CH43 - TYPICAL  
 CH44 - TYPICAL  
 CH45 - TYPICAL  
 CH46 - TYPICAL  
 CH47 - TYPICAL  
 CH48 - TYPICAL  
 CH49 - TYPICAL  
 CH50 - TYPICAL  
 CH51 - TYPICAL  
 CH52 - TYPICAL  
 CH53 - TYPICAL  
 CH54 - TYPICAL  
 CH55 - TYPICAL  
 CH56 - TYPICAL  
 CH57 - TYPICAL  
 CH58 - TYPICAL  
 CH59 - TYPICAL  
 CH60 - TYPICAL  
 CH61 - TYPICAL  
 CH62 - TYPICAL  
 CH63 - TYPICAL  
 CH64 - TYPICAL  
 CH65 - TYPICAL  
 CH66 - TYPICAL  
 CH67 - TYPICAL  
 CH68 - TYPICAL  
 CH69 - TYPICAL  
 CH70 - TYPICAL  
 CH71 - TYPICAL  
 CH72 - TYPICAL  
 CH73 - TYPICAL  
 CH74 - TYPICAL  
 CH75 - TYPICAL  
 CH76 - TYPICAL  
 CH77 - TYPICAL  
 CH78 - TYPICAL  
 CH79 - TYPICAL  
 CH80 - TYPICAL  
 CH81 - TYPICAL  
 CH82 - TYPICAL  
 CH83 - TYPICAL  
 CH84 - TYPICAL  
 CH85 - TYPICAL  
 CH86 - TYPICAL  
 CH87 - TYPICAL  
 CH88 - TYPICAL  
 CH89 - TYPICAL  
 CH90 - TYPICAL  
 CH91 - TYPICAL  
 CH92 - TYPICAL  
 CH93 - TYPICAL  
 CH94 - TYPICAL  
 CH95 - TYPICAL  
 CH96 - TYPICAL  
 CH97 - TYPICAL  
 CH98 - TYPICAL  
 CH99 - TYPICAL  
 CH100 - TYPICAL

WALL LEGEND:  
 INTERIOR WALLS: 5/8" THICK, TYPE X, TOPGAL BOARD BOTH FACES OF 1/2" MIN. METAL STUDS @ 16" O.C. WITH WALL JOINT TO 4" ABOVE CEILING. BRASS STAPLS TO STRUCTURE. PROVIDE SOUND BATT INSULATION (TYPICAL).  
 INTERIOR WALLS: 1/2" THICK, TYPE X, TOPGAL BOARD BOTH FACES OF 1/2" MIN. METAL STUDS @ 16" O.C. WITH WALL JOINT TO 4" ABOVE CEILING. BRASS STAPLS TO STRUCTURE. PROVIDE SOUND BATT INSULATION (TYPICAL).  
 EXISTING WALLS TO REMAIN



REVISIONS LOCATIONS PLAN



SECOND FLOOR PLAN  
 SCALE: 1/4" = 1'-0"

**ROOM FINISH SCHEDULE**

FLOOR	FINISH
1st	CONCRETE FLOOR SLAB
2nd	4" W.C. CONCRETE SLAB
2nd	CONCRETE SLAB

**BASES:**  
 1. 4" W.C. CONCRETE SLAB  
 2. CONCRETE SLAB

**WALLS:**  
 1. TYPE I PLASTER OVER STUDS  
 2. TYPE II PLASTER OVER STUDS  
 3. TYPE III PLASTER OVER STUDS  
 4. TYPE IV PLASTER OVER STUDS  
 5. TYPE V PLASTER OVER STUDS  
 6. TYPE VI PLASTER OVER STUDS  
 7. TYPE VII PLASTER OVER STUDS  
 8. TYPE VIII PLASTER OVER STUDS  
 9. TYPE IX PLASTER OVER STUDS  
 10. TYPE X PLASTER OVER STUDS  
 11. TYPE XI PLASTER OVER STUDS  
 12. TYPE XII PLASTER OVER STUDS  
 13. TYPE XIII PLASTER OVER STUDS  
 14. TYPE XIV PLASTER OVER STUDS  
 15. TYPE XV PLASTER OVER STUDS  
 16. TYPE XVI PLASTER OVER STUDS  
 17. TYPE XVII PLASTER OVER STUDS  
 18. TYPE XVIII PLASTER OVER STUDS  
 19. TYPE XIX PLASTER OVER STUDS  
 20. TYPE XX PLASTER OVER STUDS  
 21. TYPE XXI PLASTER OVER STUDS  
 22. TYPE XXII PLASTER OVER STUDS  
 23. TYPE XXIII PLASTER OVER STUDS  
 24. TYPE XXIV PLASTER OVER STUDS  
 25. TYPE XXV PLASTER OVER STUDS  
 26. TYPE XXVI PLASTER OVER STUDS  
 27. TYPE XXVII PLASTER OVER STUDS  
 28. TYPE XXVIII PLASTER OVER STUDS  
 29. TYPE XXIX PLASTER OVER STUDS  
 30. TYPE XXX PLASTER OVER STUDS

**CEILING:**  
 1. TYPE I PLASTER OVER STUDS  
 2. TYPE II PLASTER OVER STUDS  
 3. TYPE III PLASTER OVER STUDS  
 4. TYPE IV PLASTER OVER STUDS  
 5. TYPE V PLASTER OVER STUDS  
 6. TYPE VI PLASTER OVER STUDS  
 7. TYPE VII PLASTER OVER STUDS  
 8. TYPE VIII PLASTER OVER STUDS  
 9. TYPE IX PLASTER OVER STUDS  
 10. TYPE X PLASTER OVER STUDS  
 11. TYPE XI PLASTER OVER STUDS  
 12. TYPE XII PLASTER OVER STUDS  
 13. TYPE XIII PLASTER OVER STUDS  
 14. TYPE XIV PLASTER OVER STUDS  
 15. TYPE XV PLASTER OVER STUDS  
 16. TYPE XVI PLASTER OVER STUDS  
 17. TYPE XVII PLASTER OVER STUDS  
 18. TYPE XVIII PLASTER OVER STUDS  
 19. TYPE XIX PLASTER OVER STUDS  
 20. TYPE XX PLASTER OVER STUDS  
 21. TYPE XXI PLASTER OVER STUDS  
 22. TYPE XXII PLASTER OVER STUDS  
 23. TYPE XXIII PLASTER OVER STUDS  
 24. TYPE XXIV PLASTER OVER STUDS  
 25. TYPE XXV PLASTER OVER STUDS  
 26. TYPE XXVI PLASTER OVER STUDS  
 27. TYPE XXVII PLASTER OVER STUDS  
 28. TYPE XXVIII PLASTER OVER STUDS  
 29. TYPE XXIX PLASTER OVER STUDS  
 30. TYPE XXX PLASTER OVER STUDS

**CEILING HEIGHT:**  
 1. 8'-0" TO 8'-6"  
 2. 8'-6" TO 9'-0"  
 3. 9'-0" TO 9'-6"  
 4. 9'-6" TO 10'-0"  
 5. 10'-0" TO 10'-6"  
 6. 10'-6" TO 11'-0"  
 7. 11'-0" TO 11'-6"  
 8. 11'-6" TO 12'-0"  
 9. 12'-0" TO 12'-6"  
 10. 12'-6" TO 13'-0"  
 11. 13'-0" TO 13'-6"  
 12. 13'-6" TO 14'-0"  
 13. 14'-0" TO 14'-6"  
 14. 14'-6" TO 15'-0"  
 15. 15'-0" TO 15'-6"  
 16. 15'-6" TO 16'-0"  
 17. 16'-0" TO 16'-6"  
 18. 16'-6" TO 17'-0"  
 19. 17'-0" TO 17'-6"  
 20. 17'-6" TO 18'-0"  
 21. 18'-0" TO 18'-6"  
 22. 18'-6" TO 19'-0"  
 23. 19'-0" TO 19'-6"  
 24. 19'-6" TO 20'-0"  
 25. 20'-0" TO 20'-6"  
 26. 20'-6" TO 21'-0"  
 27. 21'-0" TO 21'-6"  
 28. 21'-6" TO 22'-0"  
 29. 22'-0" TO 22'-6"  
 30. 22'-6" TO 23'-0"

**WALL LEGEND:**

1. EXTERIOR WALLS TO REMAIN

2. EXTERIOR WALLS TO BE DEMOLISHED

3. EXTERIOR WALLS TO BE RECONSTRUCTED

4. EXTERIOR WALLS TO BE RECONSTRUCTED WITH INSULATION

5. EXTERIOR WALLS TO BE RECONSTRUCTED WITH INSULATION AND FINISH

6. EXTERIOR WALLS TO BE RECONSTRUCTED WITH INSULATION AND FINISH AND WINDOW

7. EXTERIOR WALLS TO BE RECONSTRUCTED WITH INSULATION AND FINISH AND WINDOW AND DOOR

8. EXTERIOR WALLS TO BE RECONSTRUCTED WITH INSULATION AND FINISH AND WINDOW AND DOOR AND PORCH

9. EXTERIOR WALLS TO BE RECONSTRUCTED WITH INSULATION AND FINISH AND WINDOW AND DOOR AND PORCH AND PATIO

10. EXTERIOR WALLS TO BE RECONSTRUCTED WITH INSULATION AND FINISH AND WINDOW AND DOOR AND PORCH AND PATIO AND FENCE

11. EXTERIOR WALLS TO BE RECONSTRUCTED WITH INSULATION AND FINISH AND WINDOW AND DOOR AND PORCH AND PATIO AND FENCE AND DRIVEWAY

12. EXTERIOR WALLS TO BE RECONSTRUCTED WITH INSULATION AND FINISH AND WINDOW AND DOOR AND PORCH AND PATIO AND FENCE AND DRIVEWAY AND GARAGE

13. EXTERIOR WALLS TO BE RECONSTRUCTED WITH INSULATION AND FINISH AND WINDOW AND DOOR AND PORCH AND PATIO AND FENCE AND DRIVEWAY AND GARAGE AND PORCH

14. EXTERIOR WALLS TO BE RECONSTRUCTED WITH INSULATION AND FINISH AND WINDOW AND DOOR AND PORCH AND PATIO AND FENCE AND DRIVEWAY AND GARAGE AND PORCH AND PATIO

15. EXTERIOR WALLS TO BE RECONSTRUCTED WITH INSULATION AND FINISH AND WINDOW AND DOOR AND PORCH AND PATIO AND FENCE AND DRIVEWAY AND GARAGE AND PORCH AND PATIO AND PATIO

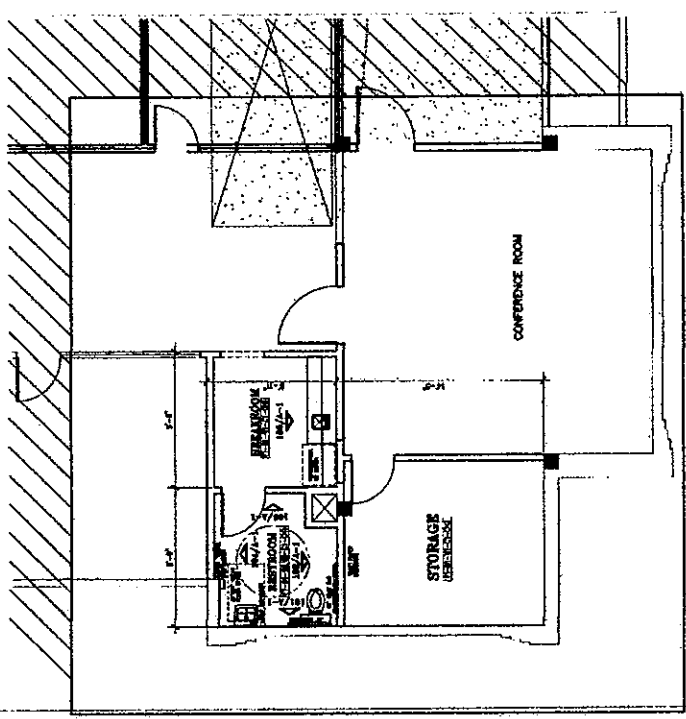
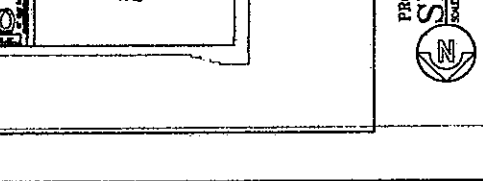
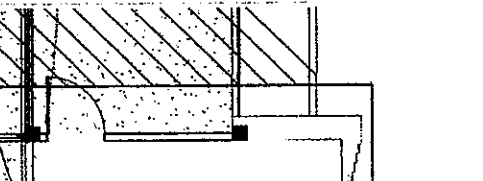
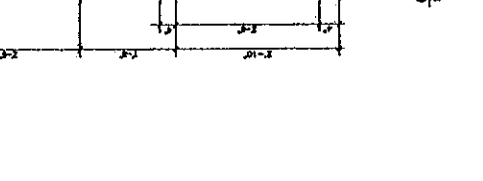
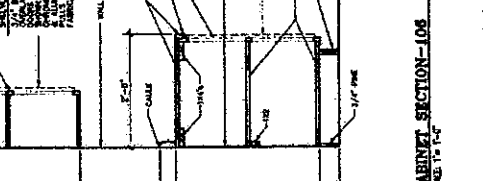
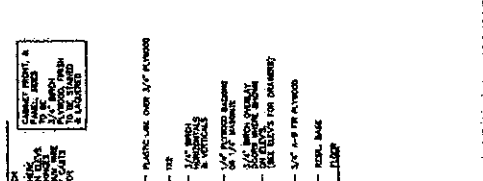
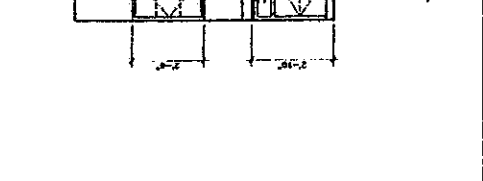
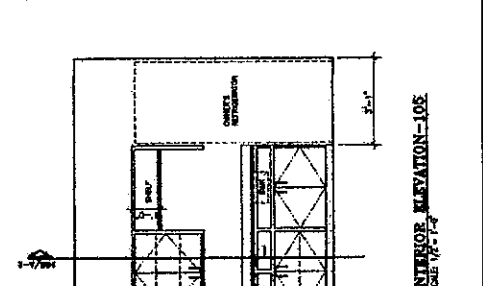
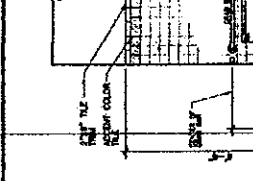
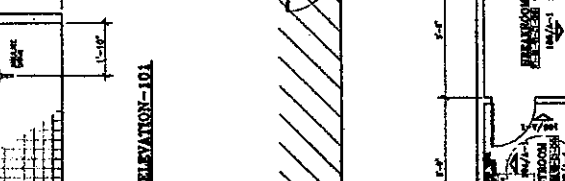
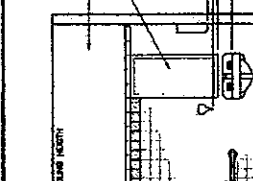
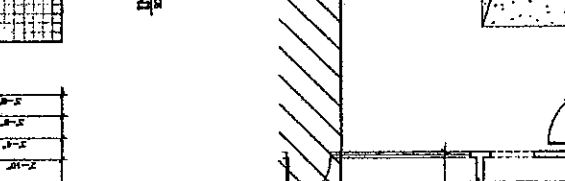
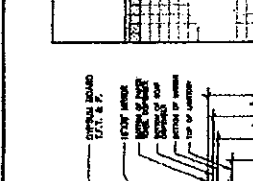
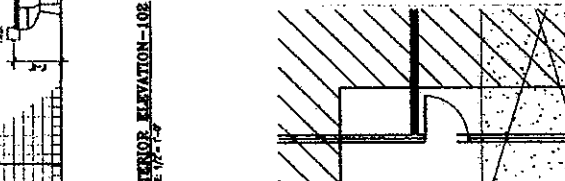
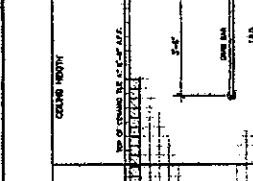
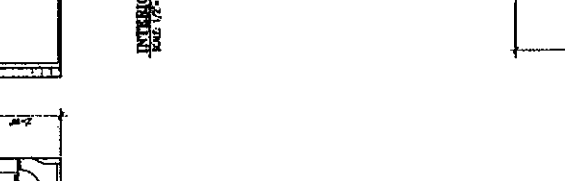
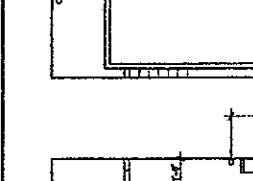
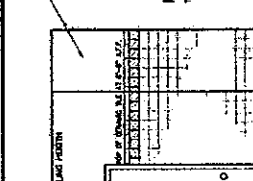
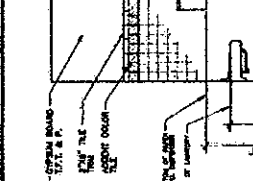
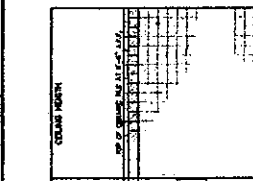
16. EXTERIOR WALLS TO BE RECONSTRUCTED WITH INSULATION AND FINISH AND WINDOW AND DOOR AND PORCH AND PATIO AND FENCE AND DRIVEWAY AND GARAGE AND PORCH AND PATIO AND PATIO AND PATIO

17. EXTERIOR WALLS TO BE RECONSTRUCTED WITH INSULATION AND FINISH AND WINDOW AND DOOR AND PORCH AND PATIO AND FENCE AND DRIVEWAY AND GARAGE AND PORCH AND PATIO AND PATIO AND PATIO AND PATIO

18. EXTERIOR WALLS TO BE RECONSTRUCTED WITH INSULATION AND FINISH AND WINDOW AND DOOR AND PORCH AND PATIO AND FENCE AND DRIVEWAY AND GARAGE AND PORCH AND PATIO AND PATIO AND PATIO AND PATIO AND PATIO

19. EXTERIOR WALLS TO BE RECONSTRUCTED WITH INSULATION AND FINISH AND WINDOW AND DOOR AND PORCH AND PATIO AND FENCE AND DRIVEWAY AND GARAGE AND PORCH AND PATIO AND PATIO AND PATIO AND PATIO AND PATIO AND PATIO

20. EXTERIOR WALLS TO BE RECONSTRUCTED WITH INSULATION AND FINISH AND WINDOW AND DOOR AND PORCH AND PATIO AND FENCE AND DRIVEWAY AND GARAGE AND PORCH AND PATIO AND PATIO AND PATIO AND PATIO AND PATIO AND PATIO AND PATIO



**D. Wilson Construction Company**

P.O. Box 3455  
McAllen, TX 78502-3455  
Ph : (956) 686-9573

**Change Request**

To: George A. Garcia  
Alcocer Garcia Associates, Inc  
1333 E. Jasmine Ave.  
McAllen, TX 78501  
Ph: (956)618-2007 Fax: (956)618-2008

Number: 5  
Date: 2/12/14  
Job: 12-561 Remodel Administration Bldg  
Phone:

Description: Additional Insulation at ceiling space, 2nd flr.

We are pleased to offer the following specifications and pricing to make the following changes:  
Cost to supply and install R-19 insulation batts w/ vapor barrier laid in on top of new acoustic ceiling on 2nd flr area south of Atrium.

The total amount to provide this work is ..... \$2,596.00

The schedule will be None..

If you have any questions, please contact me at .

Submitted by: Manuel M. Ornelas, D. Wilson C

Approved by: \_\_\_\_\_  
Date: \_\_\_\_\_

Cc: (D. Wilson Construction Co.), Alex Palacios (Progigy CM LLG), Stan.ramos@co.hidalgo.tx.us

HC Reno to Former Admin Bldg

Addendum: CR #5

Alternates:

DATE:

Tuesday

Completion

Days

Months

February 11, 2014 06:00 PM

#

Square Feet:

Math Check

SUBTOTAL:

06-00 CARPENTRY

- 06-050 Rough Carpentry -Hang Chain Curtain
- 06-410 Custom Cabinets

SUBTOTAL:

07-00 MOISTURE PROTECTION

- 07-115 Shower Stall Water Proofing
- 07-160 Dampproofing Above Grade
- 07-210 Building Insulation
- 07-270 Firesopping and Firesafing
- 07-402 Prefinished Metal Roofing
- 07-525 Mod. Bit. Mem. Roofing
- 07-620 Gutters/ Downspouts
- 07-831 Roof Hatches and Heat/Smoke Vents
- 07-900 Building Sealants

SUBTOTAL:

08-00 DOORS & WINDOWS

- 08-100 Hollow Metal Doors and Frames
- 08-213 Plastic Laminate Faced Doors
- 08-710 Finish Hardware
- 88-100 Frame/Door/Hdwr Labor
- 08-305 Access Doors
- 08-332 Overhead Rolling Doors
- 08-750 Glass & glazing
- 08-950 Insulated Translucent Skylights

SUBTOTAL:

**HC Reno to Admin Bldg**

**Addendum: CR #5**

**DATE:** Tuesday

**Alternates:**

**Completion**

**# Days Months Square Feet: Math Check**  
 February 11, 2014 10:30 AM

**12-000 Furnishings**

12-300	Educational Casework			
12-348	Laboratory Casework			
12-504	Horizontal Blinds			
	<b>SUBTOTAL</b>			

**15-000 MEP**

15-100	Plumbing Contractor			
15-300	Fire Sprinkler System			
15-300	FM 200			
15-500	HVAC Contractor			
16-100	Electric Contractor/ Fire Alarm			
	<b>SUBTOTAL</b>			

**PROJECT SUBTOTAL** 2,350

D. Wilson Construction Company fee 7.00% 165  
 2,515

91-871 1 Builder's Risk Policy (Hughston quote) 0.009% 0  
 91-874 Liability insurance 0.620% 16

**INSURANCE SUBTOTAL** 16

**PROJECT SUBTOTAL** 2,531 math is correct  
 65

**PROJECT TOTAL:** 2,596 math is correct  
 65

ERICO  
BUILDING SYSTEMS, LLC  
3714 W. Mile 17 ½  
Edinburg, Texas 78541

February 11, 2014

**PROPOSAL/CHANGE ORDER #4**

PROJECT: Hidalgo County Administration 1st & 2nd floor renovations (Edinburg, Texas)

Please find my proposed bid in the amount TWO THOUSAND THREE HUNDRED FIFTY DOLLARS & NO/100 (\$2,350.00) for the insulation work needed for this project.

**INSULATION:**

Provide and Install 5,500 square feet of R-19 batt insulation above suspended acoustical ceiling at area where old insulation existed.

Insulation materials:	\$1,800.00	
Insulation labor:	\$550.00	
	<b>TOTAL:</b>	<b>\$2,350.00</b>

Should you have any questions concerning this proposal, please feel free to give me a call @ 789-0794. Thank you.

Eric R. Garcia  
ERICO BUILDING SYSTEMS, LLC