

BEGIN PROJECT  
STA. 64+00.00

END PROJECT  
STA. 151+63.00

BRIDGE LOCATION

90% COMPLETE  
PLANS

PRELIMINARY-FOR REVIEW ONLY

These documents are for Design Review and not intended for Construction, Bidding or Permit Purposes. They were prepared by, or under the supervision of:

Ramiro Gutierrez 65948  
Print Name PE# Date

HIDALGO COUNTY PRECINCT No.2  
TOWER ROAD  
VICINITY MAP

| REVISIONS | DATE | BY |
|-----------|------|----|
|           |      |    |

**R. Gutierrez** Professional Engineers & Land Surveyors  
Engineering Corporation  
130 E PARK AVENUE • PHARR, TEXAS 78577  
(TEL) 956 782-2557 • (FAX) 956 782-2558  
FIRM No. 486

| PROJECT NUMBER | COUNTY      | HIGHWAY NO. |
|----------------|-------------|-------------|
|                |             | TOWER RD    |
| DRAWN BY:      | CHECKED BY: | SHEET No.   |
| DESIGNED BY:   | CHECKED BY: |             |

**6 CURVE DATA**

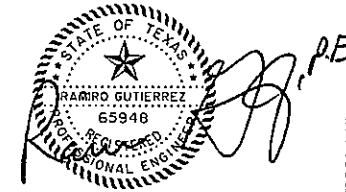
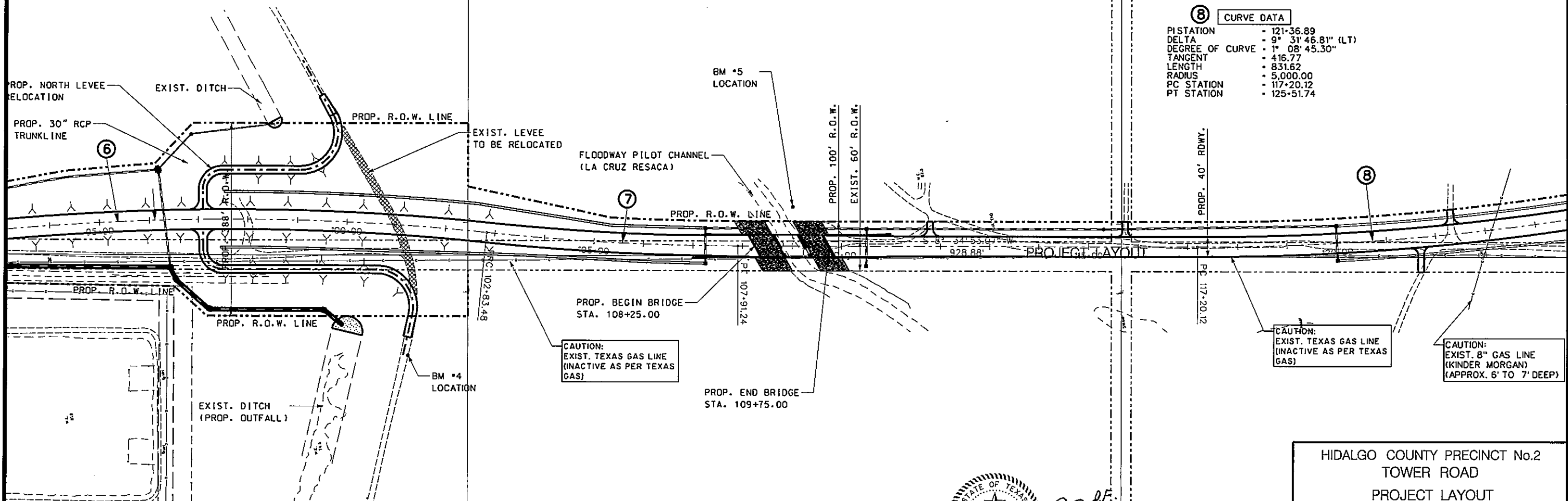
PISTATION - 96+93.91  
 DELTA - 13° 34' 33.23" (RT)  
 DEGREE OF CURVE - 1° 08' 45.30"  
 TANGENT - 595.15  
 LENGTH - 1,184.72  
 RADIUS - 5,000.00  
 PC STATION - 90+98.76  
 PT STATION - 102+83.48

**7 CURVE DATA**

PISTATION - 105+37.58  
 DELTA - 5° 49' 06.21" (LT)  
 DEGREE OF CURVE - 1° 08' 45.30"  
 TANGENT - 254.09  
 LENGTH - 507.75  
 RADIUS - 5,000.00  
 PC STATION - 102+83.48  
 PT STATION - 107+91.24

**8 CURVE DATA**

PISTATION - 121+36.89  
 DELTA - 9° 31' 46.81" (LT)  
 DEGREE OF CURVE - 1° 08' 45.30"  
 TANGENT - 416.77  
 LENGTH - 831.62  
 RADIUS - 5,000.00  
 PC STATION - 117+20.12  
 PT STATION - 125+51.74



THE SEAL APPEARING ON THIS DOCUMENT WAS AUTHORIZED BY RAMIRO GUTIERREZ, P.E. 65948 DATE: 3-18-13 ALTERATION OF A SEALED DOCUMENT WITHOUT PROPER NOTIFICATION TO THE RESPONSIBLE ENGINEER IS AN OFFENSE UNDER THE TEXAS ENGINEERING PRACTICE LAW.

|   |             |             |
|---|-------------|-------------|
| HIDALGO COUNTY PRECINCT No.2<br>TOWER ROAD<br>PROJECT LAYOUT  |             |             |
| REVISIONS   | DATE:       | BY:         |
|   |             |             |
|   |             |             |
| Professional Engineers & Land Surveyors<br>130 E. PARK AVENUE • PHARR, TEXAS 78577<br>(TEL) 956 782-2557 • (FAX) 956 782-2558<br>FIRM No. 486 |             |             |
| PROJECT NUMBER  | COUNTY      | HIGHWAY NO. |
|   |             | TOWER ROAD  |
| DRAWN BY:   | CHECKED BY: | SHEET No.   |
| DESIGNED BY:  | CHECKED BY: |             |

MATCHLINE STA. 97+00.00

MATCHLINE STA. 109+00.00

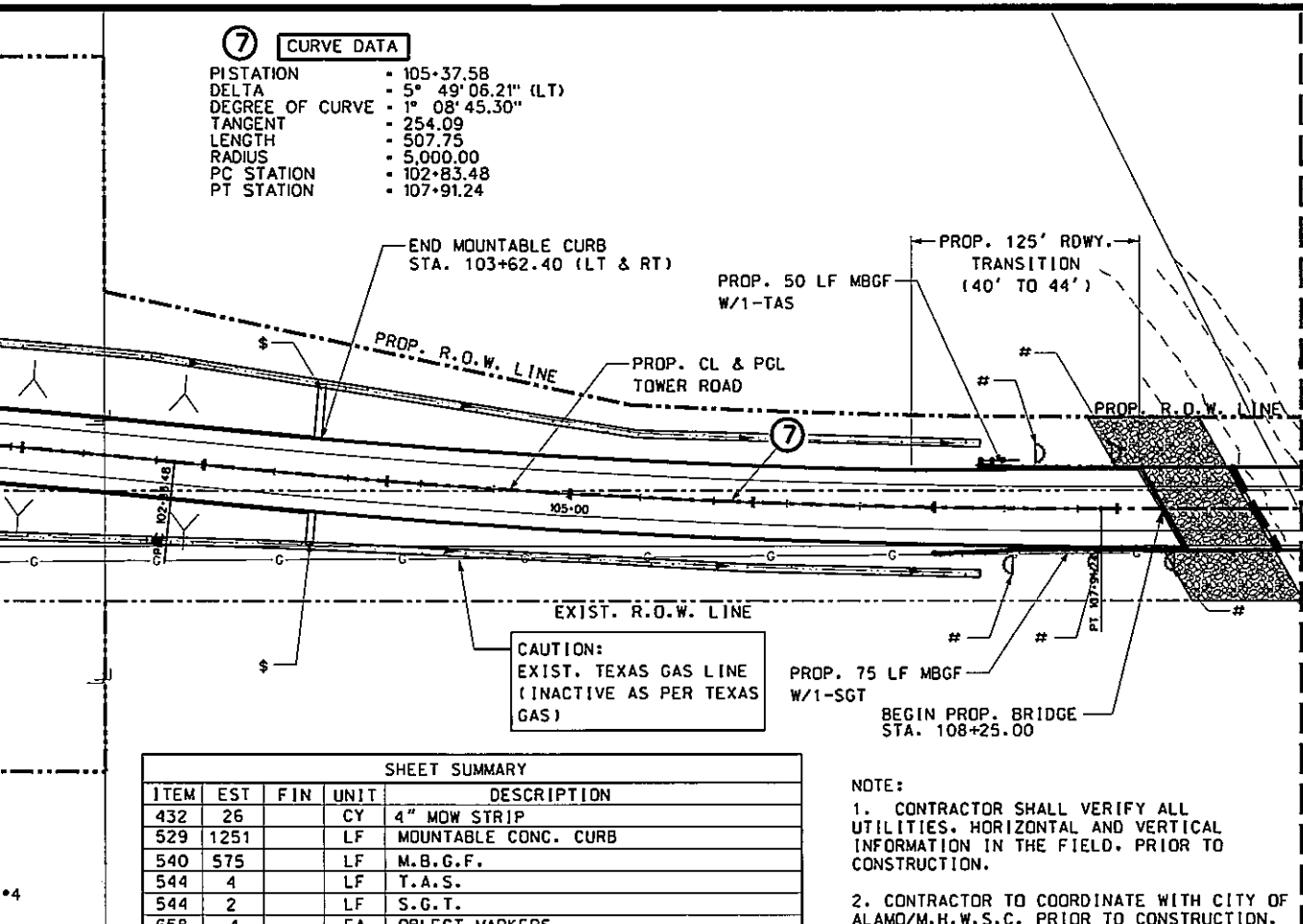
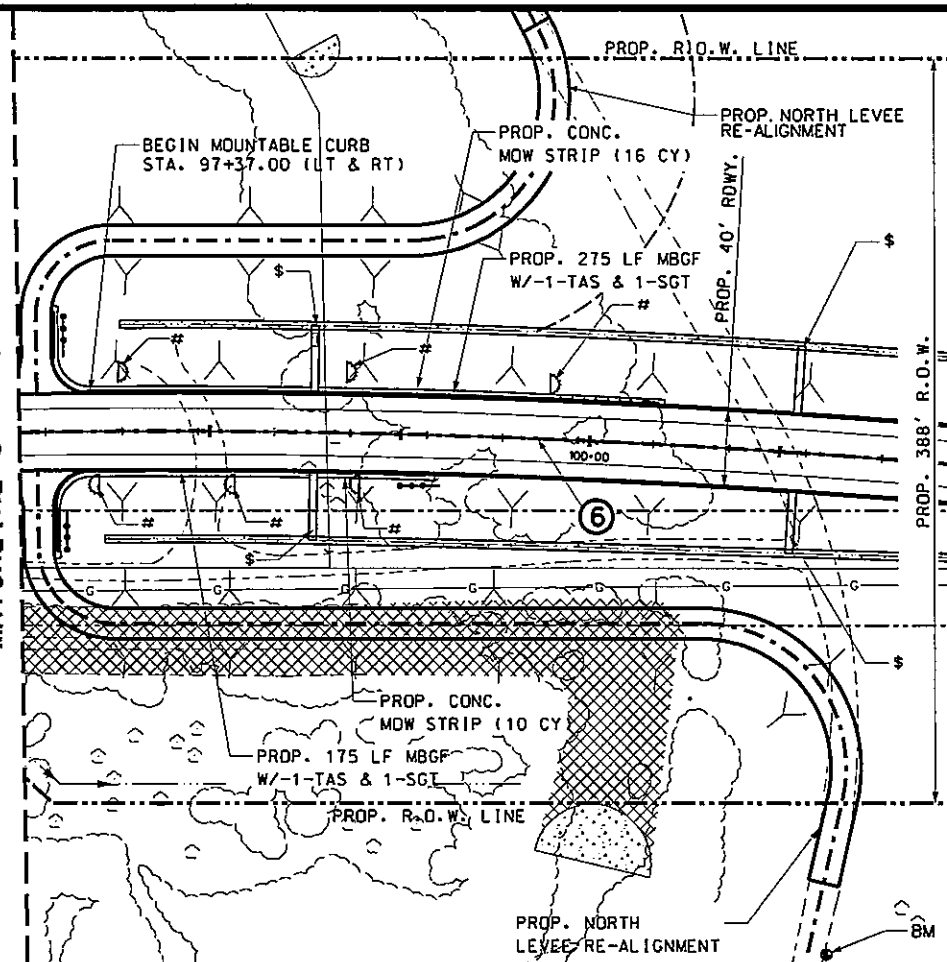
**⑦ CURVE DATA**

|                 |                      |
|-----------------|----------------------|
| PISTATION       | • 105+37.58          |
| DELTA           | • 5° 49' 06.21" (LT) |
| DEGREE OF CURVE | • 1° 08' 45.30"      |
| TANGENT         | • 254.09             |
| LENGTH          | • 507.75             |
| RADIUS          | • 5,000.00           |
| PC STATION      | • 102+83.48          |
| PT STATION      | • 107+91.24          |

SCALE  
HORZ. 1" = 100'  
VERT. 1" = 10'

**LEGEND**

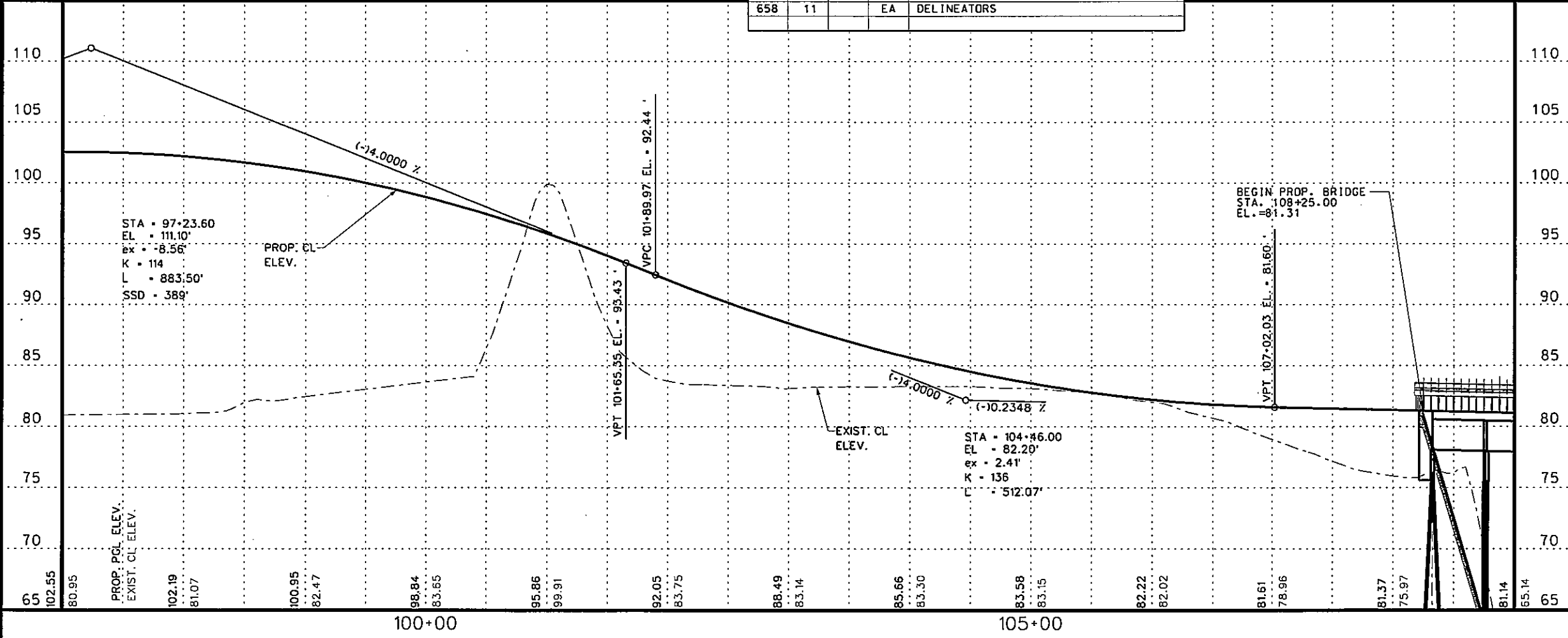
- PROP. CONCRETE DRIVEWAY
- PROP. ASPHALT DRIVEWAY
- TRAFFIC DIRECTION
- DRIVEWAY ID NUMBER (SEE DRIVEWAY TABLE)
- MAIL BOX
- EXIST. 18" PIPE
- EXIST. FENCE
- GRATED INLET
- WATER METER
- GAS METER
- SANITARY SEWER MANHOLE
- CLEAN OUT
- SIGN
- FIRE HYDRANT
- DOWN GUY
- VALVE MARKER
- PALM TREE
- TREE-2
- TREE-3
- BENCH MARK
- IRON ROD
- POWER POLE
- DELINEATORS
- OBJECT MARKERS
- PROP. DELINEATORS
- PROP. SHOULDER DRAINS (SEE U&D SHEETS)
- EXIST. DITCH TO BE FILLED



**SHEET SUMMARY**

| ITEM | EST  | FIN | UNIT | DESCRIPTION          |
|------|------|-----|------|----------------------|
| 432  | 26   |     | CY   | 4" MOW STRIP         |
| 529  | 1251 |     | LF   | MOUNTABLE CONC. CURB |
| 540  | 575  |     | LF   | M.B.G.F.             |
| 544  | 4    |     | LF   | T.A.S.               |
| 544  | 2    |     | LF   | S.G.T.               |
| 658  | 4    |     | EA   | OBJECT MARKERS       |
| 658  | 11   |     | EA   | DELINEATORS          |

**NOTE:**  
1. CONTRACTOR SHALL VERIFY ALL UTILITIES, HORIZONTAL AND VERTICAL INFORMATION IN THE FIELD, PRIOR TO CONSTRUCTION.  
2. CONTRACTOR TO COORDINATE WITH CITY OF ALAMO/M.H.W.S.C. PRIOR TO CONSTRUCTION.



THE SEAL APPEARING ON THIS DOCUMENT WAS AUTHORIZED BY RAMIRO GUTIERREZ, P.E. 65948  
DATE: 3-18-13  
ALTERATION OF A SEALED DOCUMENT WITHOUT PROPER NOTIFICATION TO THE RESPONSIBLE ENGINEER IS AN OFFENSE UNDER THE TEXAS ENGINEERING PRACTICE LAW.

SHEET 4 OF 8  
HIDALGO COUNTY PRECINCT No.2  
TOWER ROAD  
PLAN & PROFILE

|   |      |    |
|---|------|----|
| REVISIONS   | DATE | BY |
|   |      |    |
|   |      |    |
| PROJECT NUMBER: _____ COUNTY: _____ HIGHWAY NO.: _____<br>DRAWN BY: _____ CHECKED BY: _____ SHEET No.: 48<br>DESIGNED BY: _____ CHECKED BY: _____ |      |    |

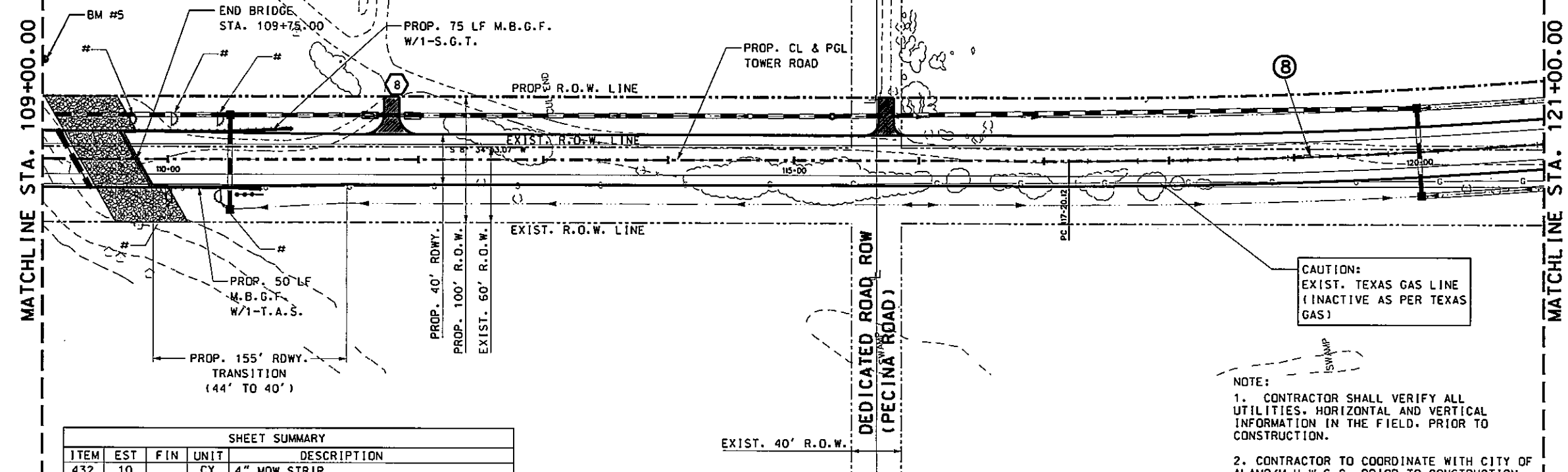
SCALE  
 HORZ. 1" = 100'  
 VERT. 1" = 10'

**⑧ CURVE DATA**

|                 |                    |
|-----------------|--------------------|
| PISTATION       | 121+36.89          |
| DELTA           | 9° 31' 46.81" (LT) |
| DEGREE OF CURVE | 1° 08' 45.30"      |
| TANGENT         | 416.77             |
| LENGTH          | 831.62             |
| RADIUS          | 5,000.00           |
| PC STATION      | 117+20.12          |
| PT STATION      | 125+51.74          |

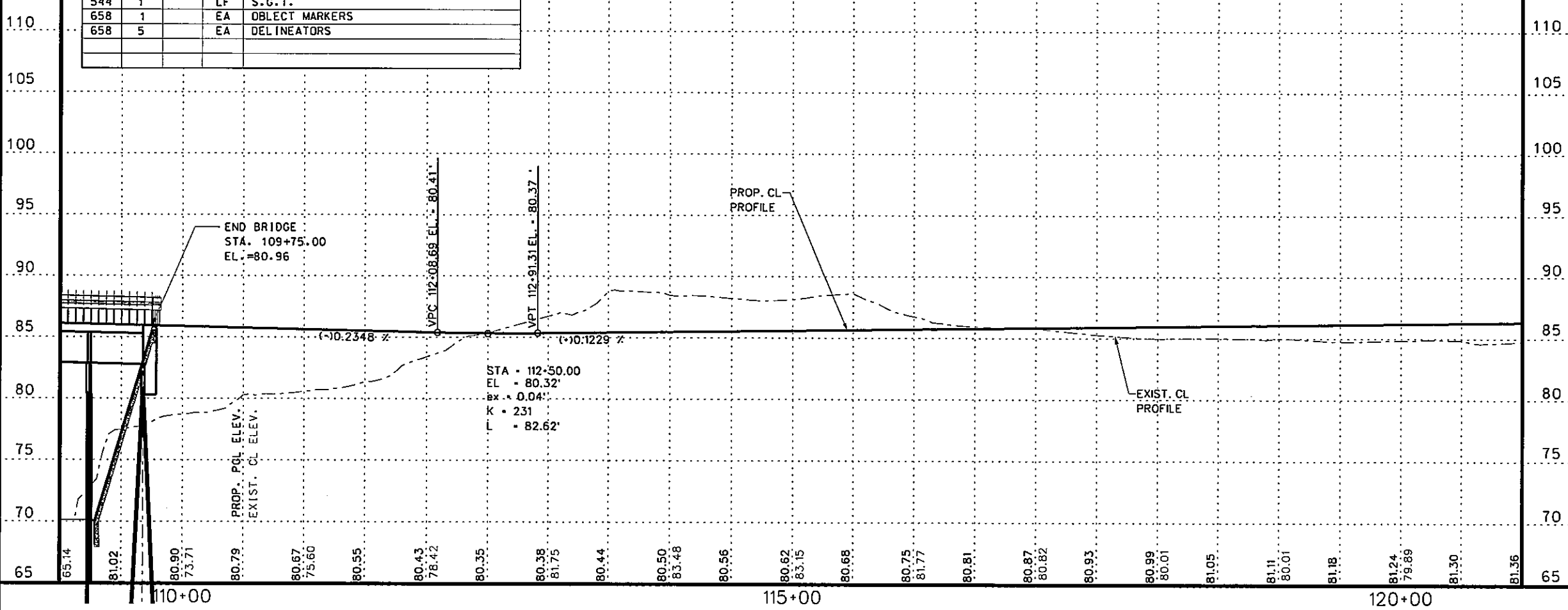
**LEGEND**

- PROP. CONCRETE DRIVEWAY
- PROP. ASPHALT DRIVEWAY
- TRAFFIC DIRECTION
- DRIVEWAY ID. NUMBER (SEE DRIVEWAY TABLE)
- MAIL BOX
- EXIST. 18" PIPE
- EXIST. FENCE
- GRATED INLET
- WATER METER
- GAS METER
- SANITARY SEWER MANHOLE
- CLEAN OUT
- SIGN
- FIRE HYDRANT
- DOWN GUY
- VALVE MARKER
- PALM TREE
- TREE-2
- TREE-3
- BENCH MARK
- IRON ROD
- POWER POLE
- DELINEATORS
- OBJECT MARKERS
- PROP. DELINEATORS
- PROP. SHOULDER DRAINS (SEE U&O SHEETS)



**SHEET SUMMARY**

| ITEM | EST | FIN | UNIT | DESCRIPTION    |
|------|-----|-----|------|----------------|
| 432  | 10  |     | CY   | 4" MOW STRIP   |
| 540  | 125 |     | LF   | M.B.G.F.       |
| 544  | 1   |     | LF   | T.A.S.         |
| 544  | 1   |     | LF   | S.G.T.         |
| 658  | 1   |     | EA   | OBJECT MARKERS |
| 658  | 5   |     | EA   | DELINEATORS    |



THE SEAL APPEARING ON THIS DOCUMENT WAS AUTHORIZED BY RAMIRO GUTIERREZ, P.E. 65948  
 DATE: 3-18-13  
 ALTERATION OF A SEALED DOCUMENT WITHOUT PROPER NOTIFICATION TO THE RESPONSIBLE ENGINEER IS AN OFFENSE UNDER THE TEXAS ENGINEERING PRACTICE LAW.

SHEET 5 OF 8

HIDALGO COUNTY PRECINCT No.2  
 TOWER ROAD  
 PLAN & PROFILE

| REVISIONS | DATE | BY |
|-----------|------|----|
|           |      |    |

**R. Gutierrez Engineering Corporation**  
 Professional Engineers & Land Surveyors  
 130 E PARK AVENUE • PHARR, TEXAS 78577  
 (TEL) 956 782-2557 • (FAX) 956 782-2558  
 FIRM No. 486

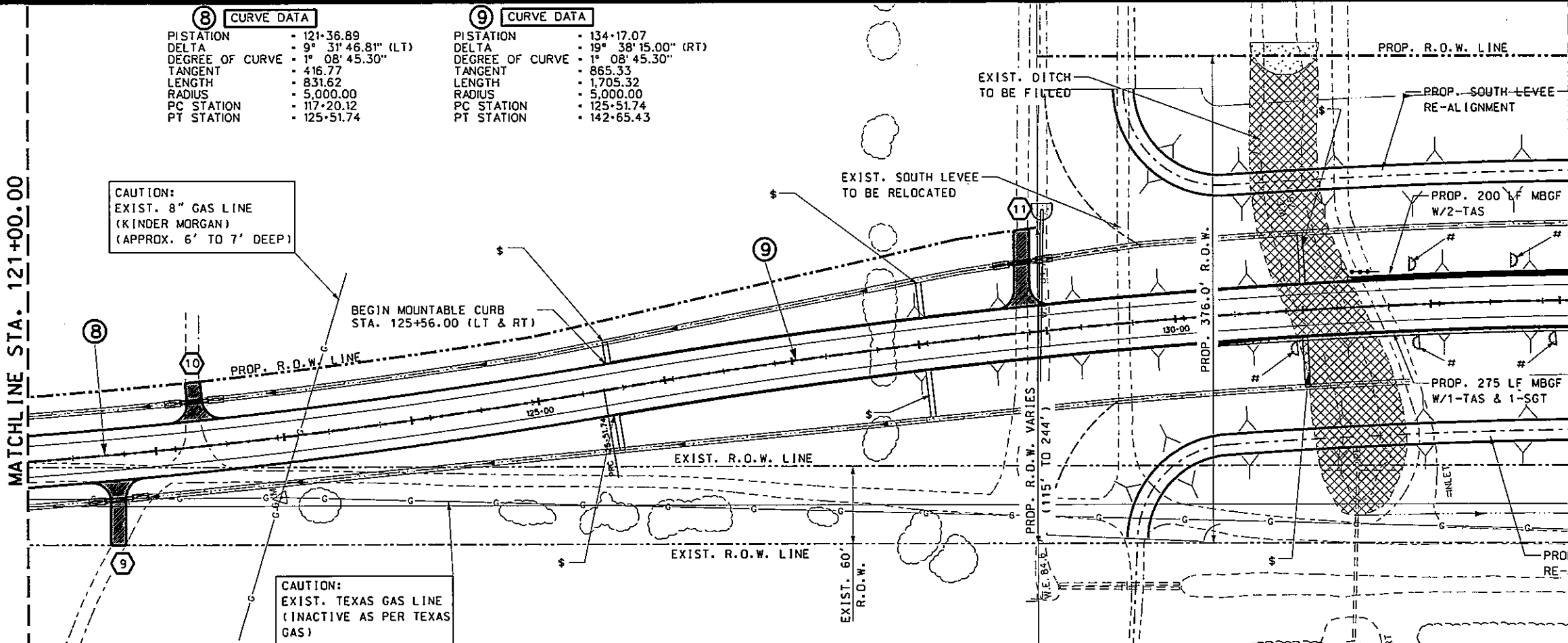
| PROJECT NUMBER | COUNTY | HIGHWAY NO. |
|----------------|--------|-------------|
|                |        | TOWER RD    |

| DRAWN BY: | CHECKED BY: | SHEET No. |
|-----------|-------------|-----------|
|           |             | 49        |

| ⑧ CURVE DATA    |                    | ⑨ CURVE DATA    |                     |
|-----------------|--------------------|-----------------|---------------------|
| PISTATION       | 121+36.89          | PISTATION       | 134+17.07           |
| DELTA           | 9° 31' 46.81" (LT) | DELTA           | 19° 38' 15.00" (RT) |
| DEGREE OF CURVE | 1° 08' 45.30"      | DEGREE OF CURVE | 1° 08' 45.30"       |
| TANGENT         | 416.77             | TANGENT         | 865.33              |
| LENGTH          | 831.62             | LENGTH          | 1,705.32            |
| RADIUS          | 5,000.00           | RADIUS          | 5,000.00            |
| PC STATION      | 117+20.12          | PC STATION      | 125+51.74           |
| PT STATION      | 125+51.74          | PT STATION      | 142+65.43           |

MATCHLINE STA. 121+00.00

MATCHLINE STA. 133+00.00



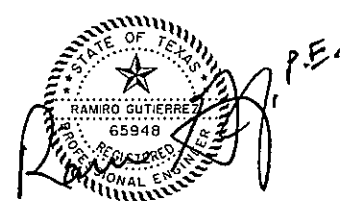
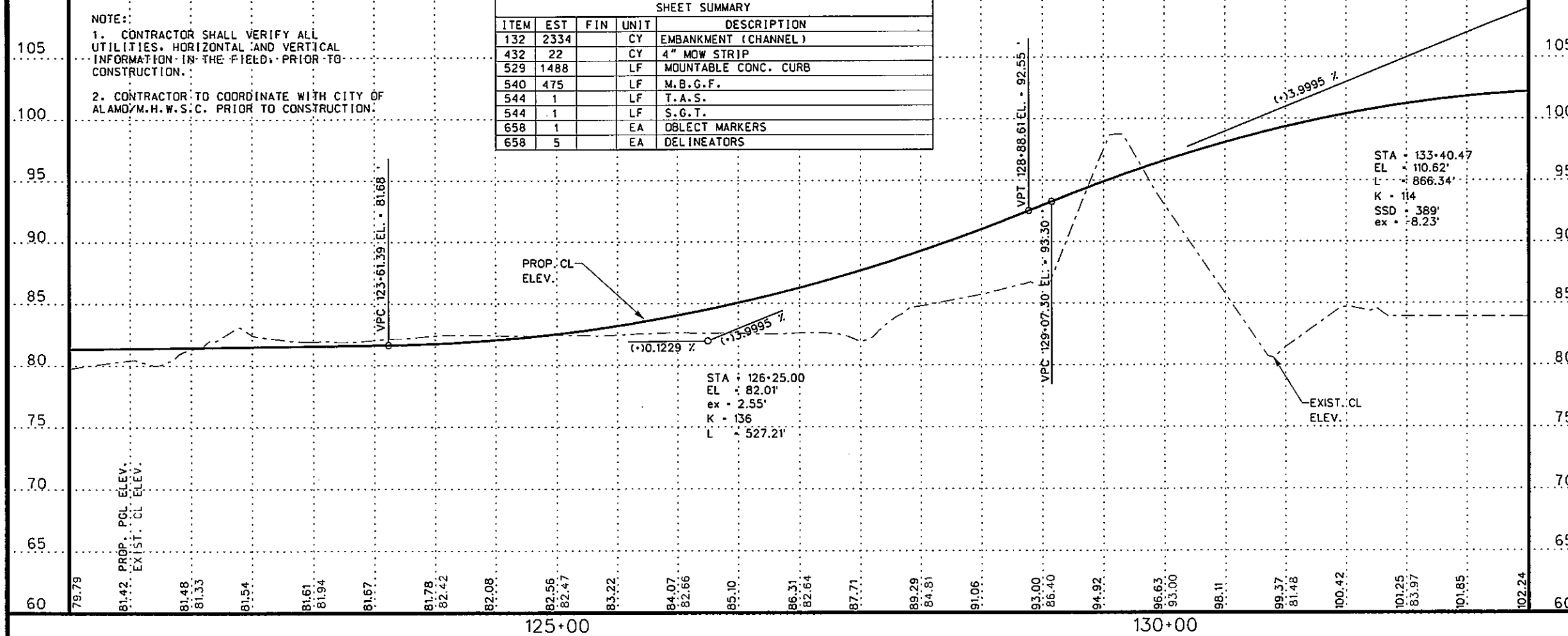
SCALE  
HORZ. 1" = 100'  
VERT. 1" = 10'

**LEGEND**

- PROP. CONCRETE DRIVEWAY
- PROP. ASPHALT DRIVEWAY
- TRAFFIC DIRECTION
- DRIVEWAY ID NUMBER (SEE DRIVEWAY TABLE)
- MAIL BOX
- EXIST. 18' PIPE
- EXIST. FENCE
- GRATED INLET
- WATER METER
- GAS METER
- SANITARY SEWER MANHOLE
- CLEAN OUT
- SIGN
- FIRE HYDRANT
- DOWN GUY
- VALVE MARKER
- PALM TREE
- TREE-2
- TREE-3
- BENCH MARK
- IRON ROD
- POWER POLE
- DELINEATORS
- OBJECT MARKERS
- PROP. DELINEATORS
- PROP. SHOULDER DRAINS (SEE U&D SHEETS)
- EXIST. DITCH TO BE FILLED

**NOTE:**  
1. CONTRACTOR SHALL VERIFY ALL UTILITIES, HORIZONTAL AND VERTICAL INFORMATION IN THE FIELD, PRIOR TO CONSTRUCTION.  
2. CONTRACTOR TO COORDINATE WITH CITY OF ALAMO/H.W.S.C. PRIOR TO CONSTRUCTION.

| SHEET SUMMARY |      |     |      |                      |
|---------------|------|-----|------|----------------------|
| ITEM          | EST  | FIN | UNIT | DESCRIPTION          |
| 132           | 2334 |     | CY   | EMBANKMENT (CHANNEL) |
| 432           | 22   |     | CY   | 4" MOW STRIP         |
| 529           | 1488 |     | LF   | MOUNTABLE CONC. CURB |
| 540           | 475  |     | LF   | M.B.G.F.             |
| 544           | 1    |     | LF   | T.A.S.               |
| 544           | 1    |     | LF   | S.G.T.               |
| 658           | 1    |     | EA   | OBLECT MARKERS       |
| 658           | 5    |     | EA   | DEL INEATORS         |



THE SEAL APPEARING ON THIS DOCUMENT WAS AUTHORIZED BY RAMIRO GUTIERREZ, P.E. 65948  
DATE: 3-18-13  
ALTERATION OF A SEALED DOCUMENT WITHOUT PROPER NOTIFICATION TO THE RESPONSIBLE ENGINEER IS AN OFFENSE UNDER THE TEXAS ENGINEERING PRACTICE LAW.

SHEET 6 OF 8

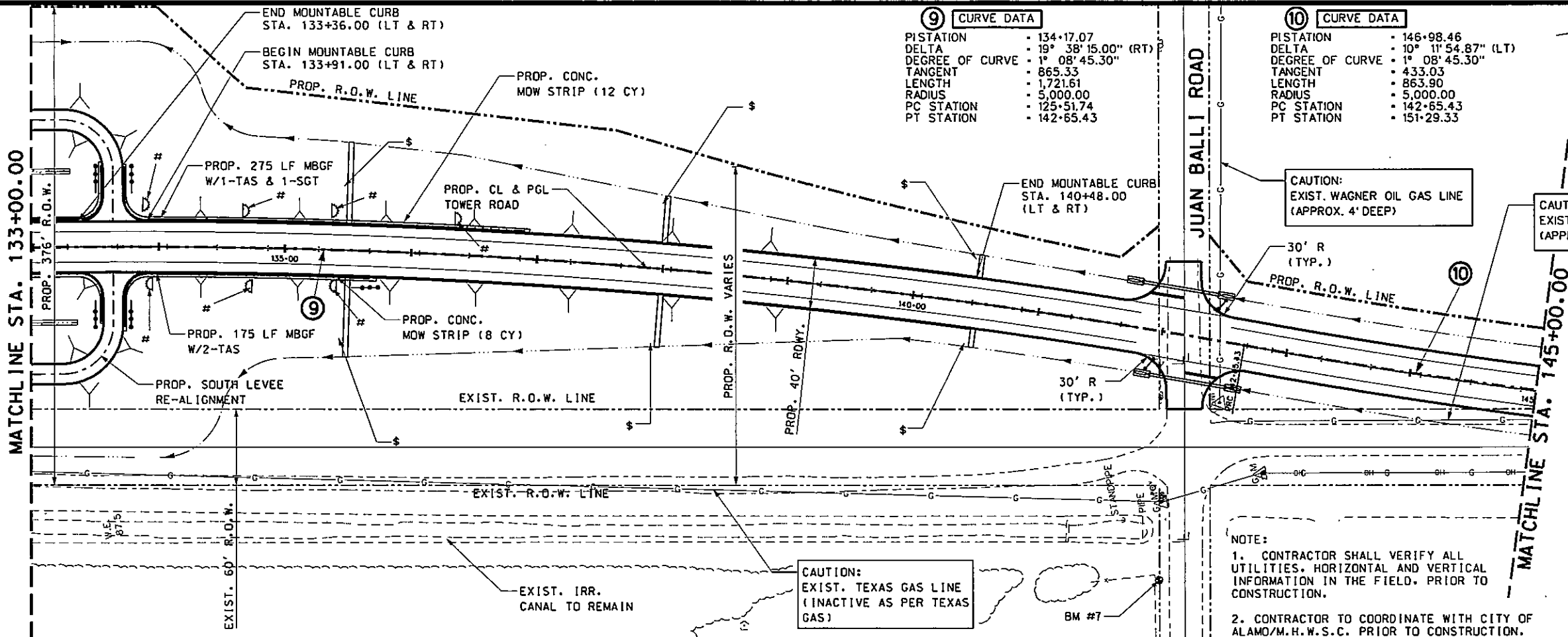
HIDALGO COUNTY PRECINCT No.2  
TOWER ROAD  
PLAN & PROFILE

| REVISIONS | DATE | BY |
|-----------|------|----|
|           |      |    |

**R. Gutierrez Engineering Corporation** Professional Engineers & Land Surveyors  
130 E. PARK AVENUE • PHARR, TEXAS 78577  
(TEL) 936 782-2557 • (FAX) 936 782-2538  
FIRM No. 486

| PROJECT NUMBER | COUNTY | HIGHWAY NO. |
|----------------|--------|-------------|
|                |        |             |

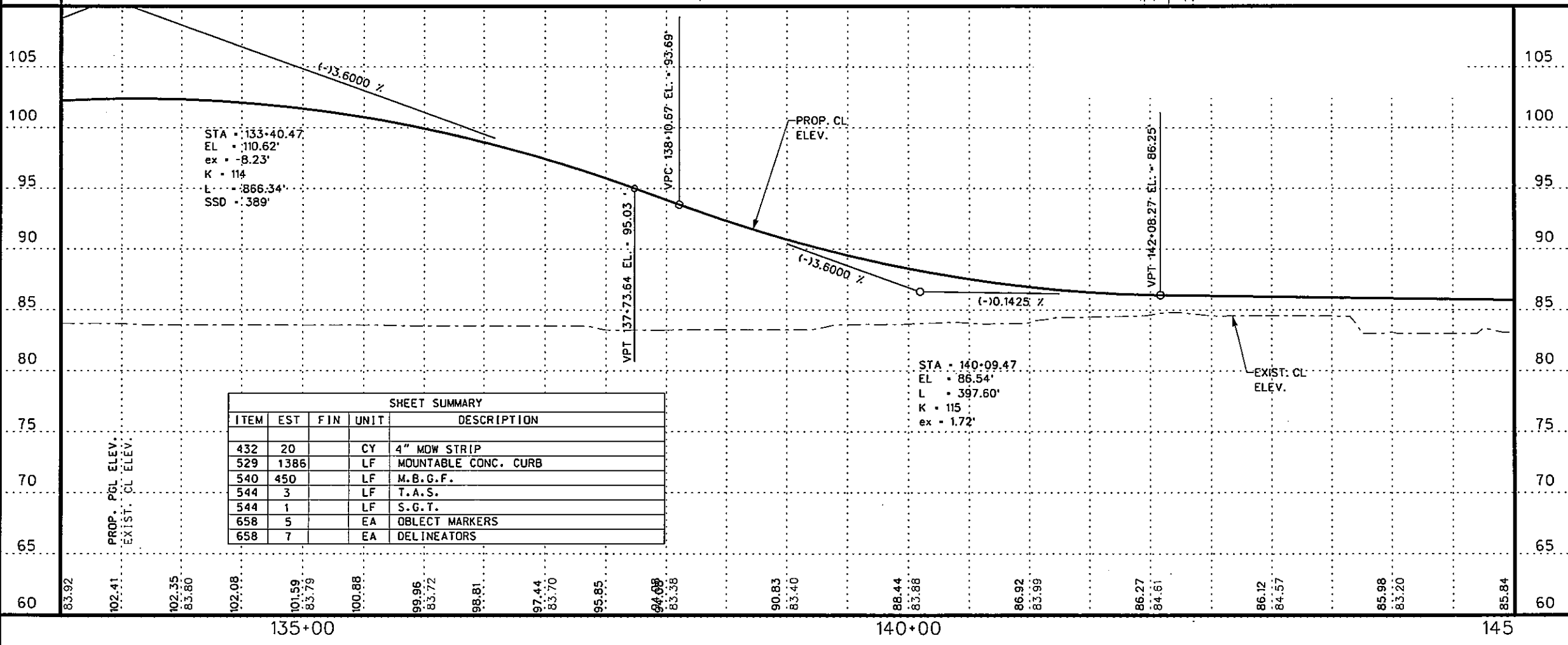
| DRAWN BY: | CHECKED BY: | SHEET No. |
|-----------|-------------|-----------|
|           |             | 50        |



SCALE  
HORZ. 1" = 100'  
VERT. 1" = 10'

**LEGEND**

- PROP. CONCRETE DRIVEWAY
- PROP. ASPHALT DRIVEWAY
- TRAFFIC DIRECTION
- DRIVEWAY ID NUMBER (SEE DRIVEWAY TABLE)
- MAIL BOX
- EXIST. 18" PIPE
- EXIST. FENCE
- GRATED INLET
- WATER METER
- GAS METER
- SANITARY SEWER MANHOLE
- CLEAN OUT
- SIGN
- FIRE HYDRANT
- DOWN GUY
- VALVE MARKER
- PALM TREE
- TREE-2
- TREE-3
- BENCH MARK
- IRON ROD
- POWER POLE
- DELINEATORS
- OBJECT MARKERS
- PROP. DELINEATORS
- PROP. SHOULDER DRAINS (SEE U&D SHEETS)



**SHEET SUMMARY**

| ITEM | EST  | FIN | UNIT | DESCRIPTION          |
|------|------|-----|------|----------------------|
| 432  | 20   |     | CY   | 4" MOW STRIP         |
| 529  | 1386 |     | LF   | MOUNTABLE CONC. CURB |
| 540  | 450  |     | LF   | M.B.G.F.             |
| 544  | 3    |     | LF   | T.A.S.               |
| 544  | 1    |     | LF   | S.G.T.               |
| 658  | 5    |     | EA   | OBJECT MARKERS       |
| 658  | 7    |     | EA   | DELINEATORS          |



THE SEAL APPEARING ON THIS DOCUMENT WAS AUTHORIZED BY RAMIRO GUTIERREZ, P.E. 65948  
DATE: 3-18-13  
ALTERATION OF A SEALED DOCUMENT WITHOUT PROPER NOTIFICATION TO THE RESPONSIBLE ENGINEER IS AN OFFENSE UNDER THE TEXAS ENGINEERING PRACTICE LAW.

SHEET 7 OF 8  
HIDALGO COUNTY PRECINCT No.2  
TOWER ROAD  
PLAN & PROFILE

| REVISIONS | DATE | BY |
|-----------|------|----|
|           |      |    |

**R. Gutierrez Professional Engineers & Land Surveyors**  
Engineering Corporation  
130 E. PARK AVENUE • PHARR, TEXAS 78677  
(TEL) 956 782-2557 • (FAX) 956 782-2558  
FIRM No. 486

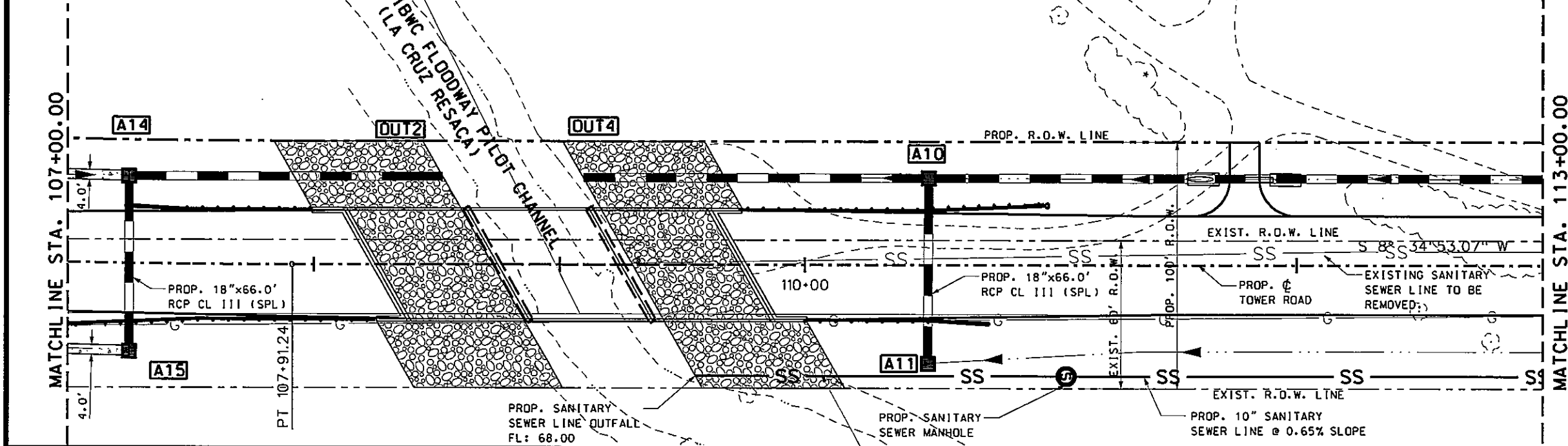
| PROJECT NUMBER | COUNTY | HIGHWAY NO. |
|----------------|--------|-------------|
|                |        | TOWER RD    |

| DRAWN BY: | CHECKED BY: | SHEET No. |
|-----------|-------------|-----------|
|           |             | 51        |

| SHEET SUMMARY |     |     |      |                                |
|---------------|-----|-----|------|--------------------------------|
| ITEM          | EST | FIN | UNIT | DESCRIPTION                    |
| 400           | -   |     | CY   | STRUCTURE EXCAVATION*          |
| 402           | 498 |     | LF   | TRENCH EXCAVATION PROTECTION   |
| 432           | 8   |     | CY   | CONC. RIPRAP (4")              |
| 464           | 132 |     | LF   | RCP SEWER (CL III) (18") (SPL) |
| 464           | 360 |     | LF   | RCP SEWER (CL III) (24") (SPL) |
| 464           | 110 |     | LF   | RCP SEWER (CL III) (30") (SPL) |
| 465           | 4   |     | EA   | INLET TY "C"                   |

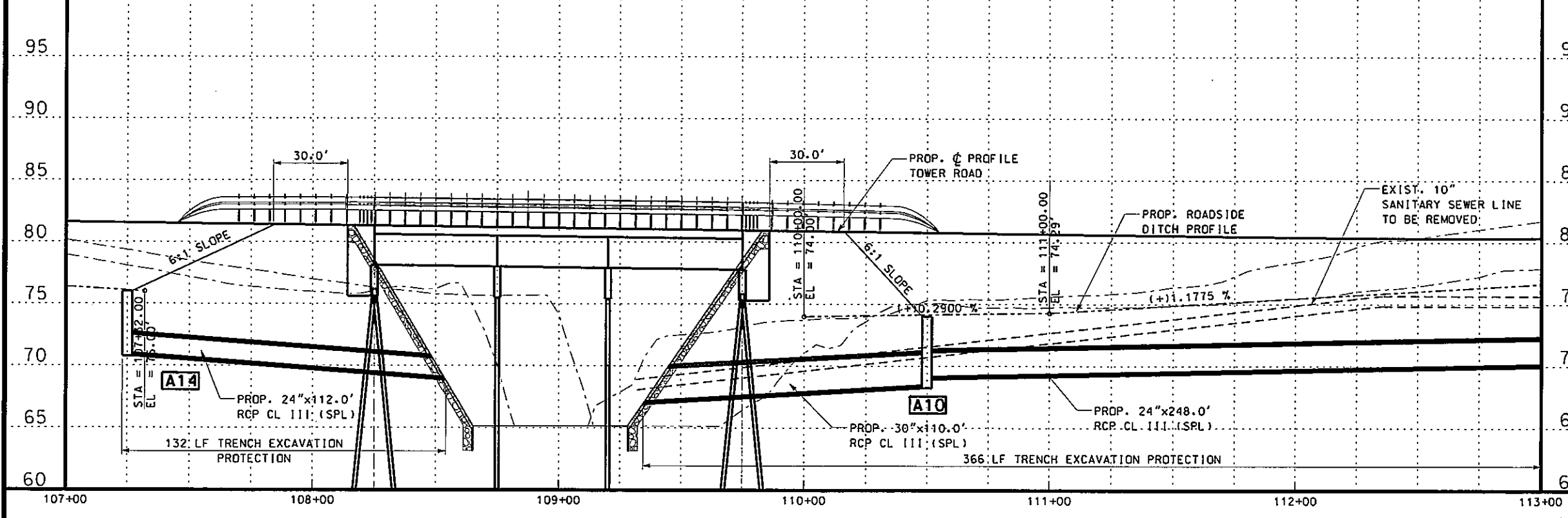
\* FOR CONTRACTORS INFORMATION ONLY (NON-PAY)

SCALE  
 HORZ. 1" = 50'  
 VERT. 1" = 10'



| STR. I.D. | DESCRIPTION        | STA./OFFSET               | TOP OF STR. ELEV. | PROP. FL. OF STR. | PROP. FL. OF PIPE (NORTH) | PROP. FL. OF PIPE (SOUTH) | PROP. FL. OF PIPE (EAST) | PROP. FL. OF PIPE (WEST) |
|-----------|--------------------|---------------------------|-------------------|-------------------|---------------------------|---------------------------|--------------------------|--------------------------|
| A10       | PROP. TY "C" INLET | STA. 110+50.00, 35.50' LT | 74.00             | 68.46             | 68.46                     | 69.00                     | -                        | 69.00                    |
| A11       | PROP. TY "C" INLET | STA. 110+50.00, 34.80' RT | 74.00             | 69.20             | -                         | -                         | 69.20                    | -                        |
| A14       | PROP. TY "C" INLET | STA. 107+25.00, 35.70' LT | 76.00             | 70.80             | -                         | 70.80                     | -                        | -                        |
| A15       | PROP. TY "C" INLET | STA. 107+25.00, 35.50' RT | 76.00             | 70.95             | -                         | -                         | 70.95                    | -                        |
| OUT2      | PROP. OUTFALL      | STA. 108+51.00, 36.0' LT  | -                 | 68.93             | -                         | -                         | -                        | -                        |
| OUT4      | PROP. OUTFALL      | STA. 109+10.00, 35.00' LT | -                 | 67.12             | -                         | -                         | -                        | -                        |

NOTE:  
 1. CONTRACTOR SHALL VERIFY ALL UTILITIES, HORIZONTAL AND VERTICAL INFORMATION IN THE FIELD, PRIOR TO CONSTRUCTION.  
 2. CONTRACTOR TO COORDINATE WITH CITY OF ALAMO/M.H.W.S.C. PRIOR TO CONSTRUCTION.



| LEGEND |                        |
|--------|------------------------|
| —      | EXIST. 18" PIPE        |
| □      | WATER METER            |
| □      | GAS METER              |
| ○      | SANITARY SEWER MANHOLE |
| ○      | CLEAN OUT SIGN         |
| ○      | FIRE HYDRANT           |
| ○      | DOWN GUY               |
| ○      | VALVE MARKER           |
| ✱      | PALM TREE              |
| ○      | TREE-2                 |
| ○      | TREE-3                 |
| ○      | POWER POLE             |
| —      | PROP. STORM PIPE       |
| —      | SAN. SEWER LINE        |
| —      | WATER LINE             |
| —      | ELEC. LINE             |
| —      | OVERHEAD POWERLINE     |
| —      | UNDERGROUND TEL.       |
| —      | GAS LINE               |

STATE OF TEXAS  
 RAMIRO GUTIERREZ  
 65948  
 REGISTERED PROFESSIONAL ENGINEER

THE SEAL APPEARING ON THIS DOCUMENT WAS AUTHORIZED BY RAMIRO GUTIERREZ, P.E. 65948  
 DATE: 3-18-13

ALTERATION OF A SEALED DOCUMENT WITHOUT PROPER NOTIFICATION TO THE RESPONSIBLE ENGINEER IS AN OFFENSE UNDER THE TEXAS ENGINEERING PRACTICE LAW

HIDALGO COUNTY PRECINCT No.2  
 TOWER ROAD  
 UTILITY & DRAINAGE

| REVISIONS | DATE | BY |
|-----------|------|----|
|           |      |    |

R. Gutierrez  
 Engineering Corporation

Professional Engineers & Land Surveyors  
 130 E. PARK AVENUE • PHARR, TEXAS 78577  
 (TEL) 936 782-2557 • (FAX) 936 782-2558  
 FIRM No. 486

|                |             |             |
|----------------|-------------|-------------|
| PROJECT NUMBER | COUNTY      | HIGHWAY NO. |
| DRAWN BY:      | CHECKED BY: | TOWER RD    |
| DESIGNED BY:   | CHECKED BY: | SHEET No.   |
|                |             | 73          |

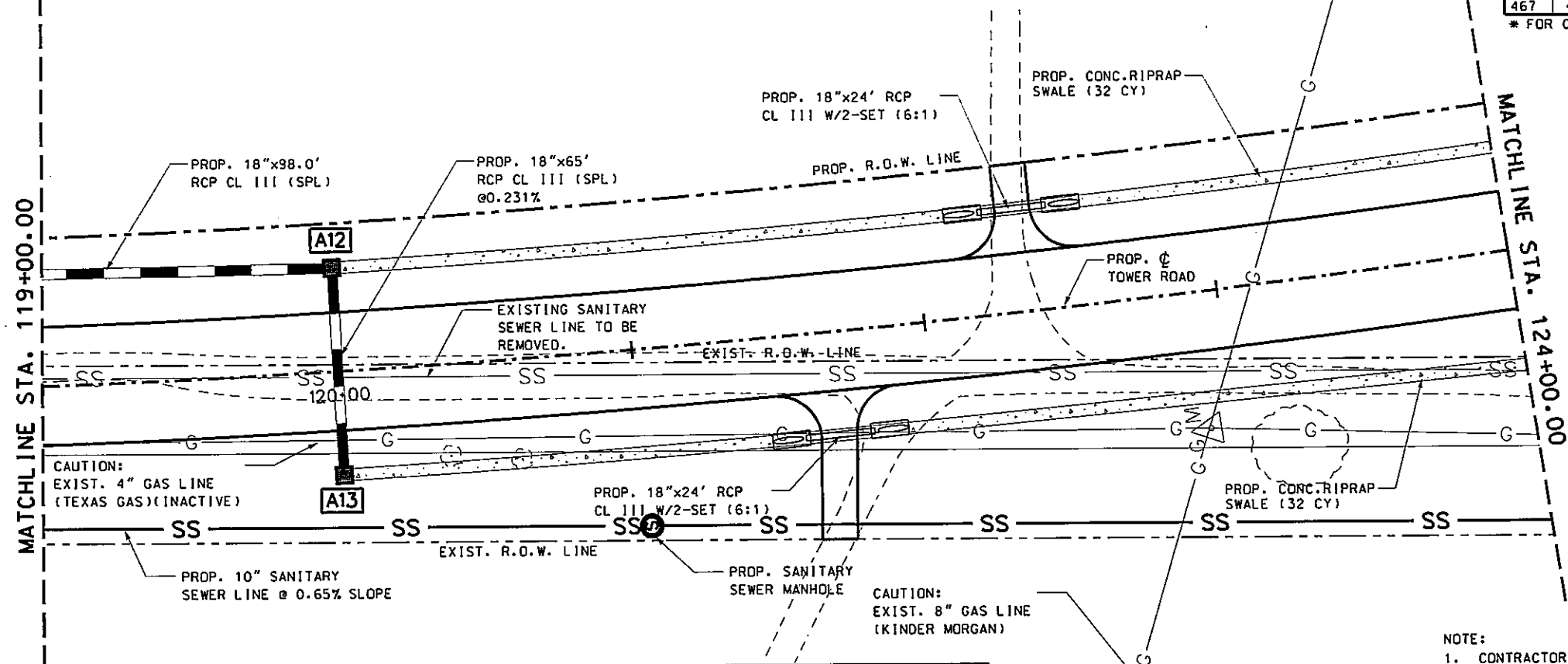


SCALE  
 HORZ. 1" = 50'  
 VERT. 1" = 10'

| SHEET SUMMARY |     |     |      |                                |
|---------------|-----|-----|------|--------------------------------|
| ITEM          | EST | FIN | UNIT | DESCRIPTION                    |
| 400           | 170 |     | CY   | STRUCTURE EXCAVATION*          |
| 402           | 175 |     | LF   | TRENCH EXCAVATION PROTECTION   |
| 432           | 64  |     | CY   | CONC. RIPRAP (4") (SWALE)      |
| 464           | 211 |     | LF   | RCP SEWER (CL III) (18") (SPL) |
| 465           | 2   |     | EA   | INLET TY "C"                   |
| 467           | 4   |     | EA   | SAFETY END TREATMENT (6:1)     |

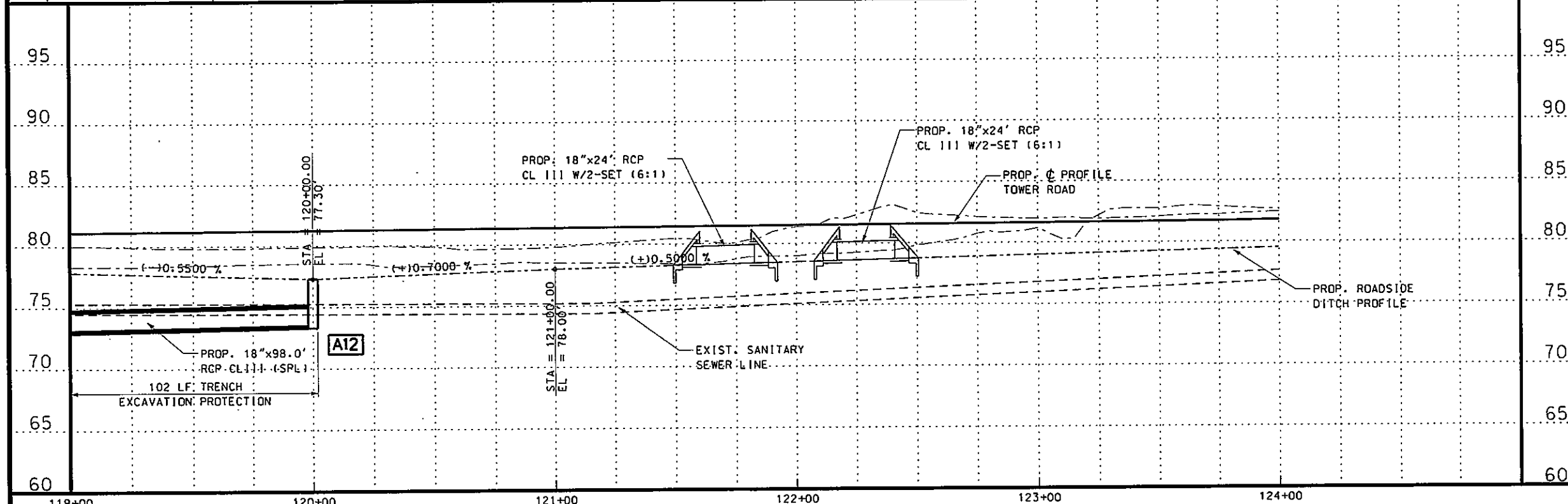
\* FOR CONTRACTORS INFORMATION ONLY (NON-PAY)

| LEGEND |                        |
|--------|------------------------|
|        | EXIST. 18" PIPE        |
|        | WATER METER            |
|        | GAS METER              |
|        | SANITARY SEWER MANHOLE |
|        | CLEAN OUT              |
|        | SIGN                   |
|        | FIRE HYDRANT           |
|        | DOWN GUY               |
|        | VALVE MARKER           |
|        | PALM TREE              |
|        | TREE-2                 |
|        | TREE-3                 |
|        | POWER POLE             |
|        | PROP. STORM PIPE       |
|        | SAN. SEWER LINE        |
|        | WATER LINE             |
|        | ELEC. LINE             |
|        | OVERHEAD POWERLINE     |
|        | UNDERGROUND TEL. LINE  |
|        | GAS LINE               |



NOTE:  
 1. CONTRACTOR SHALL VERIFY ALL UTILITIES, HORIZONTAL AND VERTICAL INFORMATION IN THE FIELD, PRIOR TO CONSTRUCTION.  
 2. CONTRACTOR TO COORDINATE WITH CITY OF ALAMO/M.H.W.S.C. PRIOR TO CONSTRUCTION.

| STR. I.D. | DESCRIPTION        | STA./OFFSET               | TOP OF STR. ELEV. | PROP. FL. OF STR. | PROP. FL. OF PIPE (NORTH) | PROP. FL. OF PIPE (SOUTH) | PROP. FL. OF PIPE (EAST) | PROP. FL. OF PIPE (WEST) |
|-----------|--------------------|---------------------------|-------------------|-------------------|---------------------------|---------------------------|--------------------------|--------------------------|
| A12       | PROP. TY "C" INLET | STA. 120+00.00, 35.00' LT | 77.30             | 73.50             | 73.50                     | -                         | -                        | 73.50                    |
| A13       | PROP. TY "C" INLET | STA. 120+00.00, 35.00' RT | 77.30             | 73.65             | -                         | -                         | -                        | 73.65                    |



THE SEAL APPEARING ON THIS DOCUMENT WAS AUTHORIZED BY RAMIRO GUTIERREZ, P.E. 65948  
 DATE: 3-18-13  
 ALTERATION OF A SEALED DOCUMENT WITHOUT PROPER NOTIFICATION TO THE RESPONSIBLE ENGINEER IS AN OFFENSE UNDER THE TEXAS ENGINEERING PRACTICE LAW

HIDALGO COUNTY PRECINCT No.2  
 TOWER ROAD  
 UTILITY & DRAINAGE

| REVISIONS | DATE | BY |
|-----------|------|----|
|           |      |    |

**R. Gutierrez** Professional Engineers & Land Surveyors  
 Engineering Corporation  
 130 E. PARK AVENUE • PHARR, TEXAS 78577  
 (TEL) 956 782-2557 • (FAX) 956 782-2558  
 FIRM No. 486

| PROJECT NUMBER | COUNTY      | HIGHWAY NO. |
|----------------|-------------|-------------|
|                |             | TOWER RD    |
| DRAWN BY:      | CHECKED BY: | SHEET No.   |
| DESIGNED BY:   | CHECKED BY: | 75          |

